

**BALDOR® • RELIANCE** 

**Product Information Packet**

**CXT3252TS**

**25HP,3520RPM,3PH,60HZ,284TSC,1048M,TEFC**

| Part Detail |    |             |              |             |        |               |            |
|-------------|----|-------------|--------------|-------------|--------|---------------|------------|
| Revision:   | B  | Status:     | PRD/A        | Change #:   |        | Proprietary:  | No         |
| Type:       | AC | Elec. Spec: | 10WGZ273     | CD Diagram: | CD0180 | Mfg Plant:    |            |
| Mech. Spec: |    | Layout:     | 10LY-001-183 | Poles:      | 02     | Created Date: | 12-02-2020 |
| Base:       |    | Eff. Date:  | 06-15-2021   | Leads:      | 9#10   |               |            |

| Specs                           |                         |                                |                           |
|---------------------------------|-------------------------|--------------------------------|---------------------------|
| Catalog Number:                 | CXT3252TS               | Electrically Isolated Bearing: | Not Electrically Isolated |
| Enclosure:                      | TEFC                    | Feedback Device:               | NO FEEDBACK               |
| Frame:                          | 284TSC                  | Heater Indicator:              | No Heater                 |
| Frame Material:                 | Iron                    | Insulation Class:              | F                         |
| Output @ Frequency:             | 25.000 HP @ 60 HZ       | Inverter Code:                 | Inverter Duty             |
| Synchronous Speed @ Frequency:  | 3600 RPM @ 60 HZ        | IP Rating:                     | NONE                      |
| Voltage @ Frequency:            | 230.0 V @ 60 HZ         | KVA Code:                      | F                         |
|                                 | 460.0 V @ 60 HZ         | Lifting Lugs:                  | Standard Lifting Lugs     |
| XP Class and Group:             | CLI GP A,B,C,D          | Locked Bearing Indicator:      | Locked Bearing            |
| XP Division:                    | Division II             | Motor Lead Termination:        | Flying Leads              |
| Agency Approvals:               | CCSA US                 | Motor Type:                    | 1048M                     |
|                                 | CSA EEV                 | Mounting Arrangement:          | F1                        |
|                                 | NEMA PREMIUM            | Power Factor:                  | 90                        |
|                                 | UR                      | Product Family:                | General Purpose           |
| Auxillary Box:                  | No Auxillary Box        | Pulley Face Code:              | C-Face                    |
| Auxillary Box Lead Termination: | None                    | Rodent Screen:                 | None                      |
| Base Indicator:                 | Rigid                   | Shaft Ground Indicator:        | No Shaft Grounding        |
| Bearing Grease Type:            | Polyrex EM (-20F +300F) | Shaft Rotation:                | Reversible                |

|                                     |                    |                                    |                     |
|-------------------------------------|--------------------|------------------------------------|---------------------|
| <b>Blower:</b>                      | None               | <b>Speed Code:</b>                 | Single Speed        |
| <b>Constant Torque Speed Range:</b> | 6                  | <b>Motor Standards:</b>            | NEMA                |
| <b>Current @ Voltage:</b>           | 56.000 A @ 230.0 V | <b>Starting Method:</b>            | Direct on line      |
|                                     | 62.000 A @ 208.0 V | <b>Thermal Device - Bearing:</b>   | None                |
|                                     | 28.000 A @ 460.0 V | <b>Thermal Device - Winding:</b>   | None                |
| <b>Design Code:</b>                 | B                  | <b>Vibration Sensor Indicator:</b> | No Vibration Sensor |
| <b>Drip Cover:</b>                  | No Drip Cover      | <b>Winding Thermal 1:</b>          | None                |
| <b>Duty Rating:</b>                 | CONT               | <b>Winding Thermal 2:</b>          | None                |
|                                     |                    | <b>XP Temp Code:</b>               | T3                  |

|                          |                               |  |            |           |                       |                |             |              |           |    |  |
|--------------------------|-------------------------------|--|------------|-----------|-----------------------|----------------|-------------|--------------|-----------|----|--|
| <b>Nameplate NP4163L</b> |                               |  |            |           |                       |                |             |              |           |    |  |
| <b>CAT.NO.</b>           | CXT3252TS                     |  |            |           |                       |                | <b>I.P.</b> | 54           |           |    |  |
| <b>SPEC.</b>             | 10-0000-1848                  |  |            |           |                       |                | <b>ENCL</b> | TEFC         |           |    |  |
| <b>FRAME</b>             | 284TSC                        |  |            |           | <b>H.P.</b>           | 25             |             |              |           |    |  |
| <b>VOLTS</b>             | 230/460                       |  |            |           | <b>P.F.</b>           | 90             |             |              |           |    |  |
| <b>F.L. AMPS</b>         | 56/28                         |  |            |           | <b>RATING</b>         | 40C AMB-CONT   |             |              |           |    |  |
| <b>R.P.M.</b>            | 3520                          |  |            |           | <b>USABLE AT 208V</b> | 62             |             |              |           |    |  |
| <b>HZ.</b>               | 60                            |  |            |           | <b>PH.</b>            | 3              |             | <b>CLASS</b> | F         |    |  |
| <b>SER.F.</b>            | 1.15                          |  |            |           | <b>DES.</b>           | B              |             | <b>SL HZ</b> | 1.3       |    |  |
| <b>NEMA NOM. EFF.</b>    | 91.7                          |  |            |           | <b>Wk2</b>            | 2.07           |             |              |           |    |  |
| <b>DE</b>                | 6311                          |  |            |           | <b>ODE</b>            | 6309           |             |              |           |    |  |
| <b>MAG. CUR.</b>         | 14/7                          |  |            |           | <b>TO</b>             | 90             |             |              |           |    |  |
| <b>INV TYPE</b>          | PWM                           |  | <b>CHP</b> | 60        |                       | <b>T. CODE</b> | T3          |              |           |    |  |
| <b>CT</b>                | 6                             |  | <b>TO</b>  | 60        |                       | <b>VT</b>      | 6           |              | <b>TO</b> | 60 |  |
| <b>CC</b>                | 010A                          |  |            | <b>SN</b> |                       |                |             |              |           |    |  |
|                          | USABLE AT 50 HZ 20HP 190/380V |  |            |           |                       |                |             |              |           |    |  |
|                          | 56/28A                        |  |            |           |                       |                |             |              |           |    |  |

| Parts List  |  |          |
|-------------|--|----------|
| Part Number | Description                              | Quantity |
| SA388856    | SA 10-0000-1848                          | 1.000 EA |
| RA379220    | RA 10-0000-1848                          | 1.000 EA |
| LB1115N     | LABEL,LIFTING DEVICE (ON ROLLS)          | 1.000 EA |
| LB1119N     | WARNING LABEL                            | 1.000 EA |
| LC0181      | CONNECTION LABEL                         | 1.000 EA |
| LB1449      | DIV-2/NEC WARNING LABEL                  | 1.000 EA |
| NP4163L     | SS CP INV DIV-2 UL CSA-C US EEV PREM, DI | 1.000 EA |
| 85XU0407S04 | 4X1/4 U DRIVE PIN STAINLESS              | 2.000 EA |
| MN416A01    | TAG-INSTAL-MAINT no wire (2100/bx) 4/22  | 1.000 EA |
| 10FH4000    | 310 FAN HOUSING STAMPED                  | 1.000 EA |
| 51XF2520A08 | SCREW, HEX SER SLT HD, ZN 1/4-20 X .50 L | 4.000 EA |
| 37FN3002C03 | EXFN, PLASTIC, 6.00 OD, 1.690 ID         | 1.000 EA |
| HW2500A25   | WOODRUFF KEY USA #1008 #BLOW CARBON STEE | 1.000 EA |
| 51XB1214A20 | 12-14X1.25 HXWSSLD SERTYB                | 1.000 EA |
| MJ1000A02   | GREASE, MOBIL POLYREX EM - 124047        | 0.130 LB |
| 10EP1106A81 | FREP TEFC W/"O" DRAIN W/O RET RING HLS   | 1.000 EA |
| 10XN3816K32 | BOLT, 3/8-16X2 HH YZ(5)                  | 4.000 EA |
| HW1001A38   | LOCKWASHER 3/8, ZINC PLT .688 OD, .382 I | 4.000 EA |
| HW4600B67   | V-RING SLINGER 1.770 X 2.170 X .28 VITON | 1.000 EA |
| HW5100A11   | W3917-042 WVY WSHR (WB)                  | 1.000 EA |
| HA4017A11   | 1/8 X 2.75 GREASE EXT (F/S)              | 1.000 EA |
| HA4051A00   | PLASTIC CAP FOR GREASE FITTING           | 1.000 EA |
| HW4500A21   | 1618BALEMITE FITTING 825 UNIVERSAL       | 1.000 EA |
| HW4500A17   | 317400 ALEMITE GREASE RELIEF             | 1.000 EA |

| Parts List (continued) |  |          |
|------------------------|--|----------|
| Part Number            | Description                              | Quantity |
| HA4066A01              | PUSH IN T-DRAIN FITTING (BLACK)          | 1.000 EA |
| 10EP1305A149           | PU ENDPLATE, MACH                        | 1.000 EA |
| HW1001A38              | LOCKWASHER 3/8, ZINC PLT .688 OD, .382 I | 4.000 EA |
| 10XN3816K28            | 3/8-16 X 1.75 HEX HD CAP SCREW, GRADE 5  | 4.000 EA |
| HW4600B40              | V-RING SLINGER 2.000 X 2.680 X .28 VITON | 1.000 EA |
| 10XN3118K40            | 5/16-18 X 2.50" HEX HD, GRADE 5          | 4.000 EA |
| HW1001A31              | LOCKWASHER 5/16, ZINC PLT.591 OD, .319 I | 4.000 EA |
| HA4051A00              | PLASTIC CAP FOR GREASE FITTING           | 1.000 EA |
| HW4500A03              | GREASE FITTING, .125 NPT 1610(ALEMITE) 8 | 1.000 EA |
| HW4500A17              | 317400 ALEMITE GREASE RELIEF             | 1.000 EA |
| HA4066A01              | PUSH IN T-DRAIN FITTING (BLACK)          | 1.000 EA |
| 10CB3000               | CONDUIT BOX, MACH W/2.00 LEAD HOLE       | 1.000 EA |
| 09GS1000SP             | GASKET-CONDUIT BOX, 1/16 THICK LEXIDE    | 1.000 EA |
| 10XN3118K12            | 5/16-18 X .75 GRADE 5, ZINC PLATED       | 4.000 EA |
| HW1001A31              | LOCKWASHER 5/16, ZINC PLT.591 OD, .319 I | 4.000 EA |
| WD1000B25              | GND LUG, BURNDY L125HP OR T&B L125HP-BB  | 1.000 EA |
| 19XW3118G08            | .31-18X.50,HEX WSHR HD,TAPTITE 2,GREEN   | 1.000 EA |
| 10CB3500SP             | CONDUIT BOX LID, CAST                    | 1.000 EA |
| 10GS1000SP             | GASKET, CONDUIT BOX LID                  | 1.000 EA |
| 51XW2520A12            | .25-20 X .75, TAPTITE II, HEX WSHR SLTD  | 4.000 EA |
| MG1025L14              | WILKOFAS, 776.14, GRUNDFOS BLACK         | 0.125 GA |
| 10PA1000               | PACKAGING GROUP COMBINED PRINT PK1023A06 | 1.000 EA |
| HW2501G17              | KEY, 3/8 SQ X 1.875                      | 1.000 EA |

**AC Induction Motor Performance Data**

Record # 56867

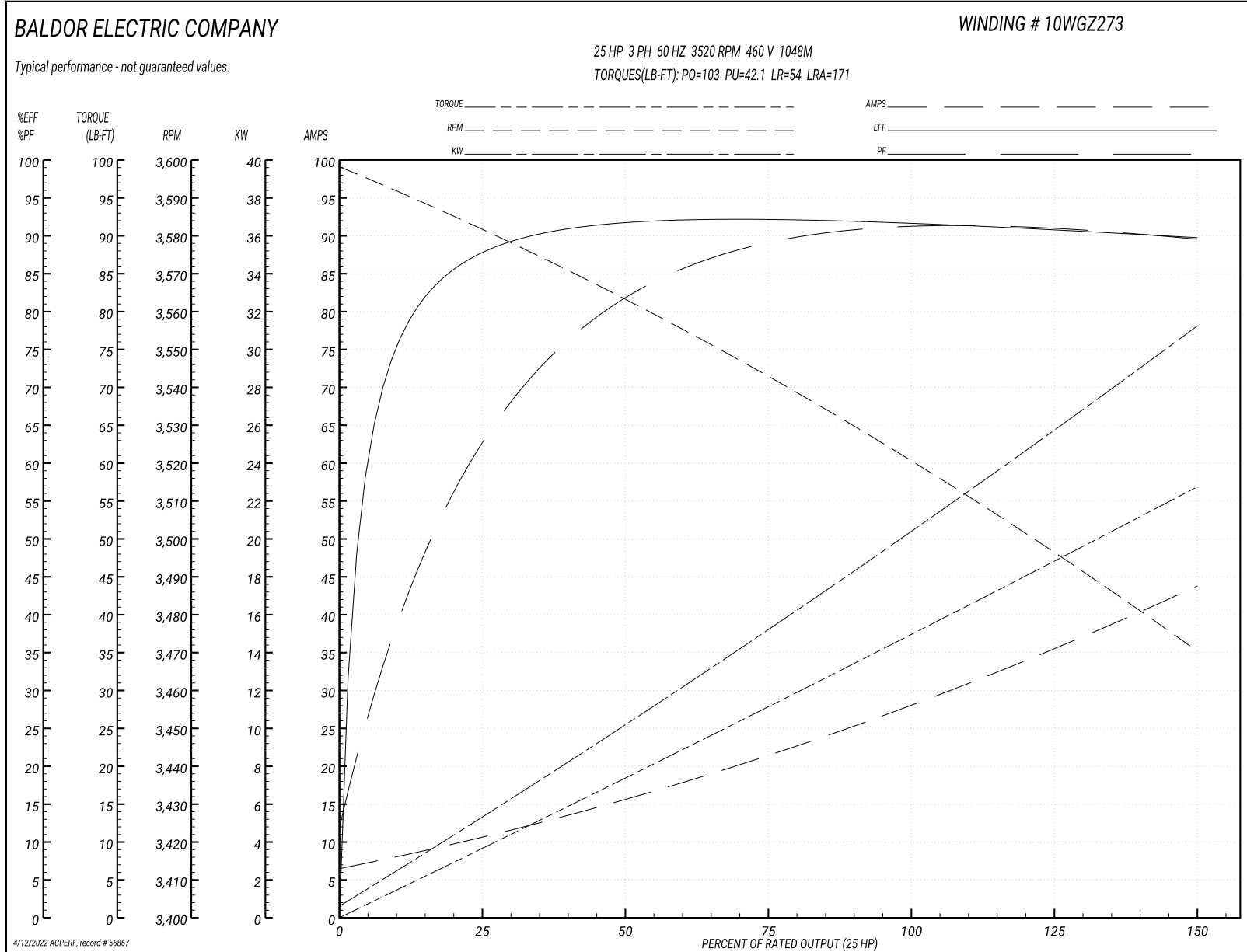
Typical performance - not guaranteed values

| <b>Winding: 10WGZ273-R003</b> |              | <b>Type: 1048M</b>               |   | <b>Enclosure: TEFC</b> |  |
|-------------------------------|--------------|----------------------------------|---|------------------------|--|
| <b>Nameplate Data</b>         |              |                                  | <b>460 V, 60 Hz:<br/>Single Voltage Motor</b> |                        |  |
| <b>Rated Output (HP)</b>      | 25           | <b>Full Load Torque</b>          | 37.3 LB-FT                                    |                        |  |
| <b>Volts</b>                  | 230/460      | <b>Start Configuration</b>       | direct on line                                |                        |  |
| <b>Full Load Amps</b>         | 56/28        | <b>Breakdown Torque</b>          | 103 LB-FT                                     |                        |  |
| <b>R.P.M.</b>                 | 3520         | <b>Pull-up Torque</b>            | 42.1 LB-FT                                    |                        |  |
| <b>Hz</b>                     | 60 Phase     | <b>Locked-rotor Torque</b>       | 54 LB-FT                                      |                        |  |
| <b>NEMA Design Code</b>       | B            | <b>Starting Current</b>          | 171 A   |                        |  |
| <b>Service Factor (S.F.)</b>  | 1            | <b>No-load Current</b>           | 6.99 A  |                        |  |
| <b>NEMA Nom. Eff.</b>         | 91.7         | <b>Line-line Res. @ 25°C</b>     | 0.29072 Ω                                     |                        |  |
| <b>Rating - Duty</b>          | 40C AMB-CONT | <b>Temp. Rise @ Rated Load</b>   | 57°C  |                        |  |
|                               |              | <b>Locked-rotor Power Factor</b> | 23.3  |                        |  |
|                               |              | <b>Rotor inertia</b>             | 2.06 LB-FT <sup>2</sup>                       |                        |  |

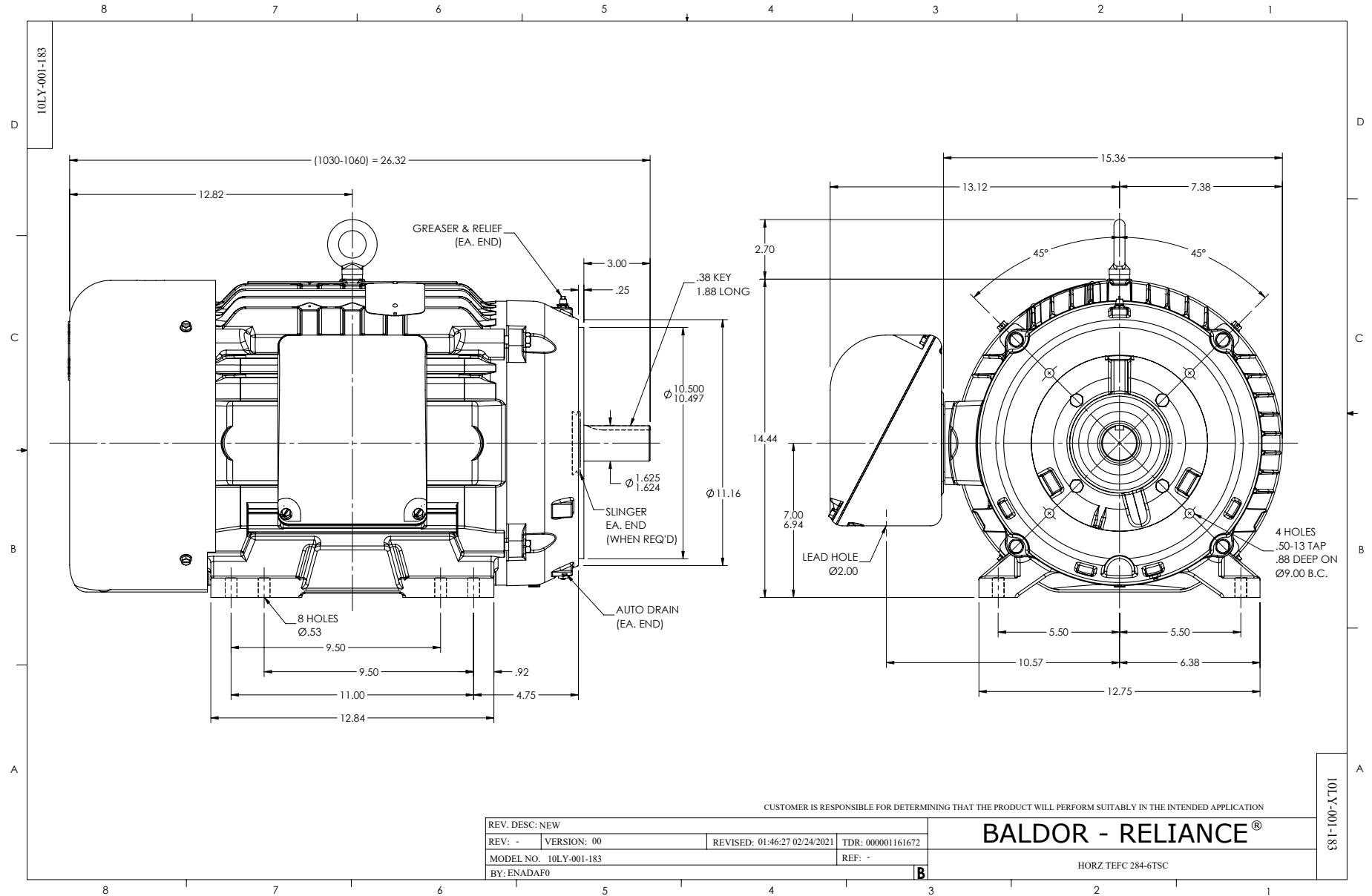
**Load Characteristics 460 V, 60 Hz, 25 HP**

| <b>% of Rated Load</b> | <b>25</b> | <b>50</b> | <b>75</b> | <b>100</b> | <b>125</b> | <b>150</b> |
|------------------------|-----------|-----------|-----------|------------|------------|------------|
| <b>Power Factor</b>    | 69        | 83        | 89        | 90         | 90         | 90         |
| <b>Efficiency</b>      | 87.8      | 91.6      | 92.2      | 91.8       | 90.9       | 89.7       |
| <b>Speed</b>           | 3580.1    | 3563.2    | 3542.7    | 3521.3     | 3497       | 3469.9     |
| <b>Line amperes</b>    | 10.1      | 15.4      | 21.7      | 28.3       | 35.7       | 43.5       |

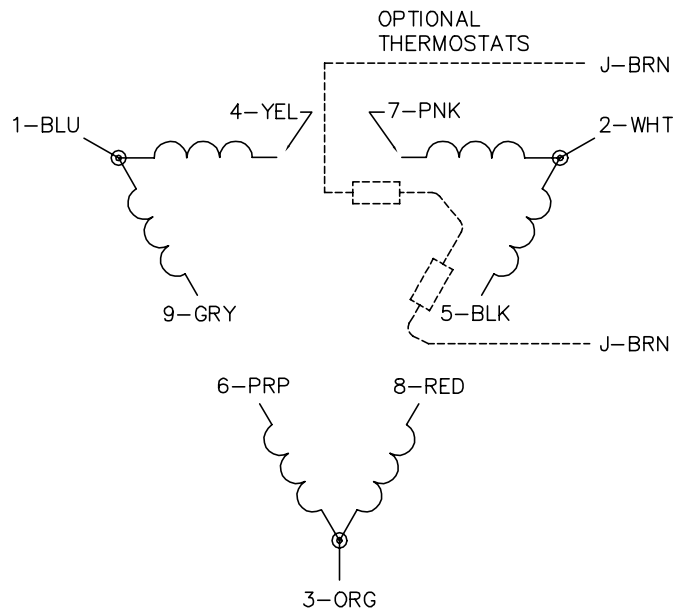
Performance Graph at 460V, 60Hz, 25.0HP Typical performance - Not guaranteed values



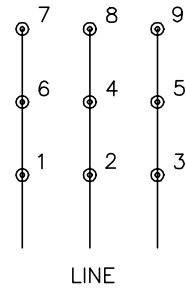




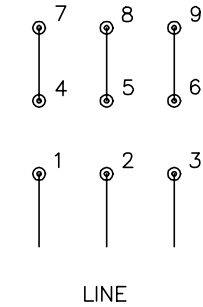
CD0180



LOW VOLTAGE  
(2D)



HIGH VOLTAGE  
(1D)



NOTES:

1. INTERCHANGE ANY TWO LINE LEADS TO REVERSE ROTATION.
2. OPTIONAL THERMOSTATS ARE PROVIDED WHEN SPECIFIED.
3. ACTUAL NUMBER OF INTERNAL PARALLEL CIRCUITS MAY BE A MULTIPLE OF THOSE SHOWN ABOVE.
4. LEAD COLORS ARE OPTIONAL. LEADS MUST ALWAYS BE NUMBERED AS SHOWN.

CD0180

|                                   |                              |                   |
|-----------------------------------|------------------------------|-------------------|
| REV. DESC: ADD CLASS CONN00000007 |                              |                   |
| REV. LTR: D                       | VERSION: 01                  | TDR: 000001099922 |
| FILE: \AAA\00005\148              | REVISED: 10:25:29 02/19/2019 | BY: ENBRIRO       |
| MTL: -                            | © □                          |                   |

**BALDOR - RELIANCE®**

3PH, DV, 9 LEADS, DELTA CONNECTION

SH 1 of 1

Marketing maintained PDF of MN416:

<http://www.baldor.com/support/Literature/Load.ashx/MN416?ManNumber=MN416>