

BALDOR® • RELIANCE 

Product Information Packet

DRX14124T

1HP,3450//2875RPM,3PH,60HZ,143T,XPFC,F1

Part Detail							
Revision:	A	Status:	PRD/A	Change #:		Proprietary:	No
Type:	AC	Elec. Spec:	35WGS921	CD Diagram:	CD0005	Mfg Plant:	
Mech. Spec:		Layout:	35LYX081	Poles:	02	Created Date:	06-20-2019
Base:		Eff. Date:	06-15-2020	Leads:	9#18		

Specs			
Catalog Number:	DRX14124T	Duty Rating:	CONT
Enclosure:	XPFC	Electrically Isolated Bearing:	Not Electrically Isolated
Frame:	143T	Feedback Device:	NO FEEDBACK
Frame Material:	Steel	Heater Indicator:	No Heater
Output @ Frequency:	.750 HP @ 50 HZ	Insulation Class:	F
	1.000 HP @ 60 HZ	Inverter Code:	Inverter Duty
Synchronous Speed @ Frequency:	3600 RPM @ 60 HZ	IP Rating:	NONE
Voltage @ Frequency:	230.0 V @ 60 HZ	KVA Code:	L
	190.0 V @ 50 HZ	Lifting Lugs:	No Lifting Lugs
	380.0 V @ 50 HZ	Locked Bearing Indicator:	Locked Bearing
	460.0 V @ 60 HZ	Motor Lead Termination:	Flying Leads
XP Class and Group:	CLI GP C,D	Motor Type:	3516M
XP Division:	Division I	Mounting Arrangement:	F1
Agency Approvals:	UR	Power Factor:	82
	CSA EEV	Product Family:	General Purpose
	CSA	Pulley Face Code:	Standard
Auxillary Box:	No Auxillary Box	Rodent Screen:	None
Auxillary Box Lead Termination:	None	RoHS Status:	ROHS NON-COMPLIANT

Base Indicator:	Rigid	Shaft Ground Indicator:	No Shaft Grounding
Bearing Grease Type:	Polyrex EM (-20F +300F)	Shaft Rotation:	Reversible
Blower:	None	Speed Code:	Single Speed
Constant Torque Speed Range:	6	Motor Standards:	NEMA
Current @ Voltage:	2.800 A @ 230.0 V	Starting Method:	Direct on line
	2.600 A @ 190.0 V	Thermal Device - Bearing:	None
	1.400 A @ 460.0 V	Thermal Device - Winding:	Normally Closed Thermostat
	1.300 A @ 380.0 V	Vibration Sensor Indicator:	No Vibration Sensor
Design Code:	B	Winding Thermal 1:	None
Drip Cover:	No Drip Cover	Winding Thermal 2:	None
		XP Temp Code:	T3C

Nameplate NP1401XPSLEV										
NO.						CC	010A			
S/N						TEMP CODE	T3C			
SPEC.	35-0000-0192					INV.TYPE	PWM			
CAT.NO.	DRX14124T					C HP FR	60	C HP TO	90	
HP	1//.75					CT HZ FROM	6	CT HZ TO	60	
VOLTS	230/460//190/380					VT HZ FROM	6	VT HZ TO	60	
AMPS	2.8/1.4//2.6/1.3					MAG CUR	1.4/.7			
RPM	3450//2875					MX RPM	5400			
HZ	60//50	PH	3	CL	F	NOM.EFF.	84			
SER.F.	1.00	DES	B	SL HZ	2	WK2	0.036			
FRAME	143T	RATING	40C AMB-CONT							
	55C AMB @ 1.0SF									
	1.15 SF SINEWAVE					NEMA MG-1 PT 5,IP55				

Parts List		
Part Number	Description	Quantity
SA371136	SA 35-0000-0192	1.000 EA
RA360816	RA 35-0000-0192	1.000 EA
LB1119N	WARNING LABEL	1.000 EA
LC0145B01	CONNECTION LABEL	1.000 EA
NP1401XPSLEV	SS XP INV UL CSA-EEV CC CL-I GP-C&D	1.000 EA
85XU0407S04	4X1/4 U DRIVE PIN STAINLESS	2.000 EA
85XU0407S04	4X1/4 U DRIVE PIN STAINLESS	4.000 EA
MN416A01	TAG-INSTAL-MAINT no wire (2100/bx) 4/22	1.000 EA
LB1359F	ALUM XP CAUTION LABEL	1.000 EA
35FH4005A01SP	IEC FH NO GREASER W/PRIMED	1.000 EA
51XW1032A06	10-32 X .38, TAPTITE II, HEX WSHR SLTD S	3.000 EA
34FN3002B01	EXTERNAL FAN, PLASTIC, .637/.639 HUB W/	1.000 EA
51XB0818A12	8-18X3/4 HXWSSLD SERTYB	1.000 EA
MJ1000A02	GREASE, MOBIL POLYREX EM - 124047	0.050 LB
HA3104A06	THRUBOLT 5/16-18 X 8.50 OHIO ROD	4.000 EA
XY3118A12	5/16-18 HEX NUT DIRECTIONAL SERRATION	4.000 EA
35EP1715A08	FREP XPFC 203 BRG GROUP "C" W/DRAIN	1.000 EA
HW5100A03	WAVY WASHER (W1543-017)	1.000 EA
HW4506A02	BREATHER/DRAIN-EXP PROOF-.125-27 NPTF AI	1.000 EA
HW3022E05	.125 DIA X .500 ROLLED SPRING PIN	1.000 EA
35EP3701B05	PUEP X-PROOF - 205 BRG GROUP C&E	1.000 EA
HA2009A86	SLINGER FOR GROUP E MTRS - 205 BRG.	1.000 EA
80XN0632J06	SET SCREW, 6-32 X 3/8", HEX SOCKET, AS	1.000 EA
HW4506A02	BREATHER/DRAIN-EXP PROOF-.125-27 NPTF AI	1.000 EA

Parts List (continued)		
Part Number	Description	Quantity
HW3022E05	.125 DIA X .500 ROLLED SPRING PIN	1.000 EA
35CB1005A01	CONDUIT BOX,MACH - GROUP "C" MTRS	1.000 EA
RM1020A41	O-RING, -150 BUNA-N, .103 CS X 2.862 ID	1.000 EA
11XW1032G06	10-32 X .38, TAPTITE II, HEX WSHR SLTD U	1.000 EA
HW3001B01	BRASS CUP WASHER, FOR #10 SCREW	1.000 EA
35CB1501A01	CONDUIT BOX LID, MACH. - GROUP "C" MTRS	1.000 EA
MG1500Y02	WILKOPON PRIMER YELLOW	0.022 GA
MG1025G29	WILKOFASST, 789.229, DARK CHARCOAL GRAY	0.022 GA
36PA1000	PKG GRP, PRINT PK1016A06	1.000 EA
HW2501D13	KEY, 3/16 SQ X 1.375	1.000 EA
HA7000A01	KEY RETAINER 7/8" DIA SHAFT	1.000 EA

AC Induction Motor Performance Data

Record # 76574

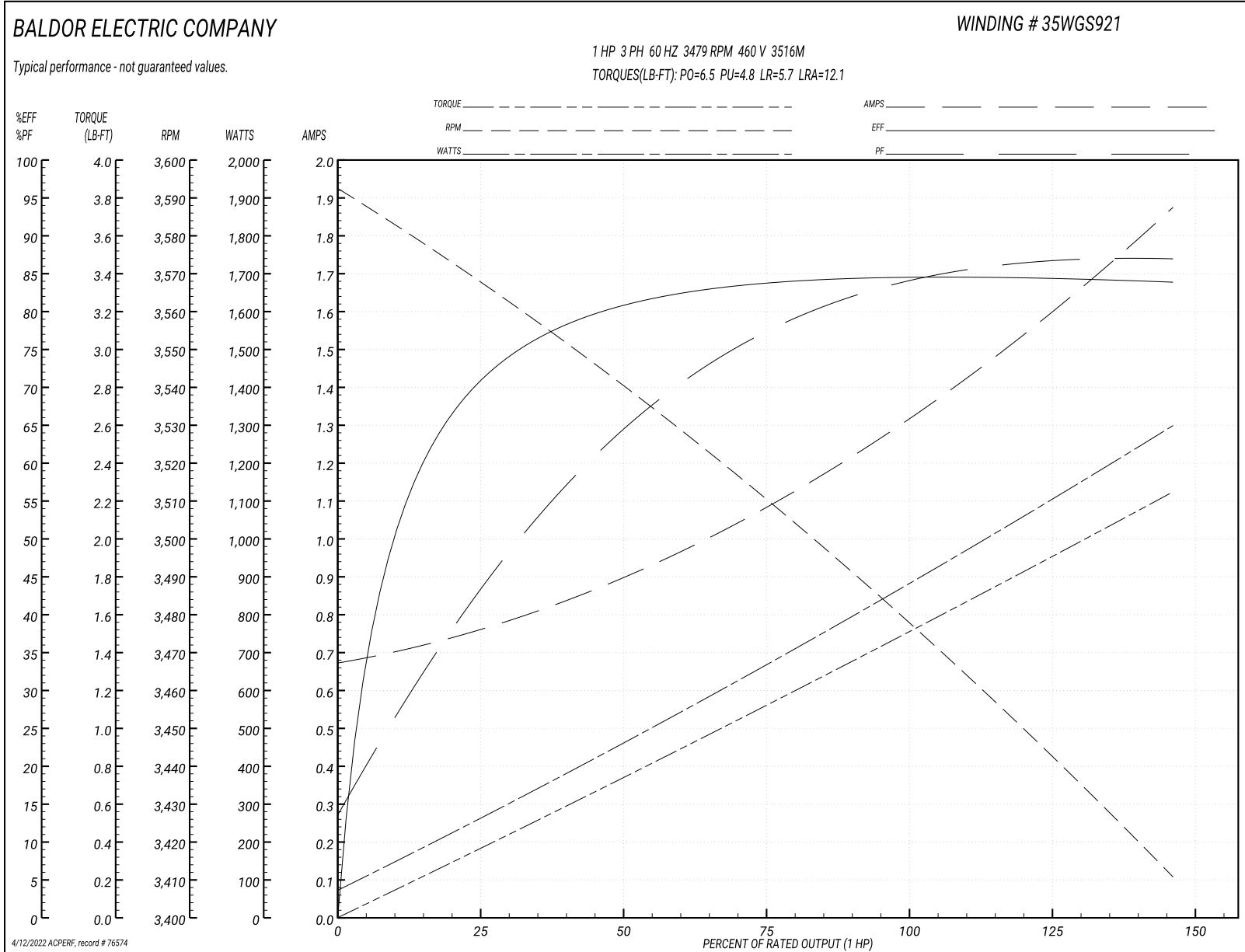
Typical performance - not guaranteed values

Winding: 35WGS921-R013		Type: 3516M		Enclosure: XPFC	
Nameplate Data			460 V, 60 Hz: High Voltage Connection		
Rated Output (HP)		1	Full Load Torque		1.5 LB-FT
Volts	230/460//190/380		Start Configuration		direct on line
Full Load Amps	2.8/1.4//2.6/1.3		Breakdown Torque		6.5 LB-FT
R.P.M.	3450//2875		Pull-up Torque		4.8 LB-FT
Hz	60//50	Phase	3	Locked-rotor Torque	5.7 LB-FT
NEMA Design Code		B KVA Code	L	Starting Current	12.1 A
Service Factor (S.F.)			1	No-load Current	0.68 A
NEMA Nom. Eff.	84	Power Factor	82	Line-line Res. @ 25°C	15.2 Ω
Rating - Duty	40C	AMB-CONT		Temp. Rise @ Rated Load	33°C
				Locked-rotor Power Factor	56.1
				Rotor inertia	0.0443 LB-FT ²

Load Characteristics 460 V, 60 Hz, 1 HP

% of Rated Load	25	50	75	100	125	150
Power Factor	45	65	77	83	87	87
Efficiency	70.3	80.5	83.9	84.6	84.6	83.7
Speed	3567	3539	3510	3479	3446	3410
Line amperes	0.75	0.9	1.09	1.33	1.56	1.88

Performance Graph at 460V, 60Hz, 1.0HP Typical performance - Not guaranteed values



AC Induction Motor Performance Data

Record # 76575

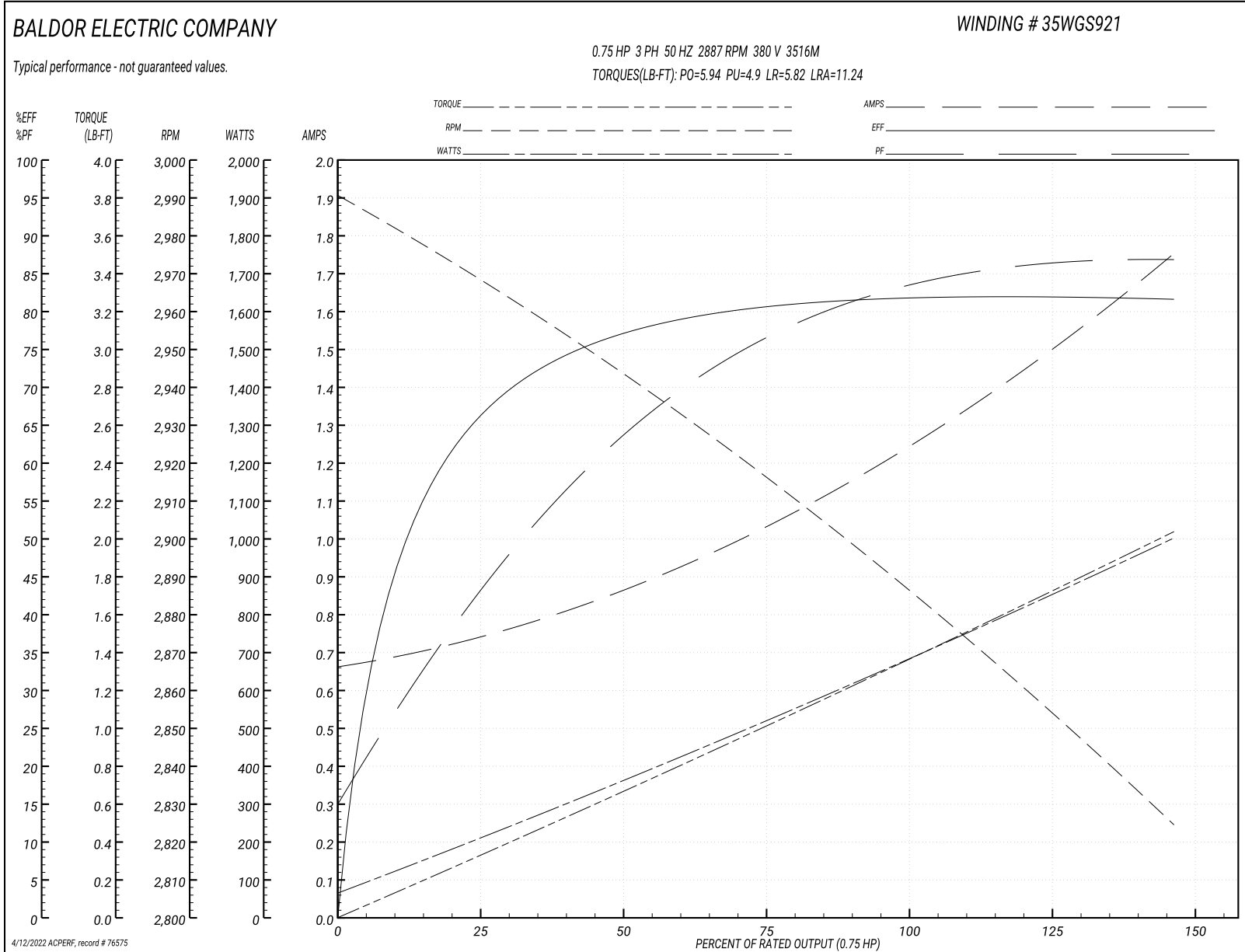
Typical performance - not guaranteed values

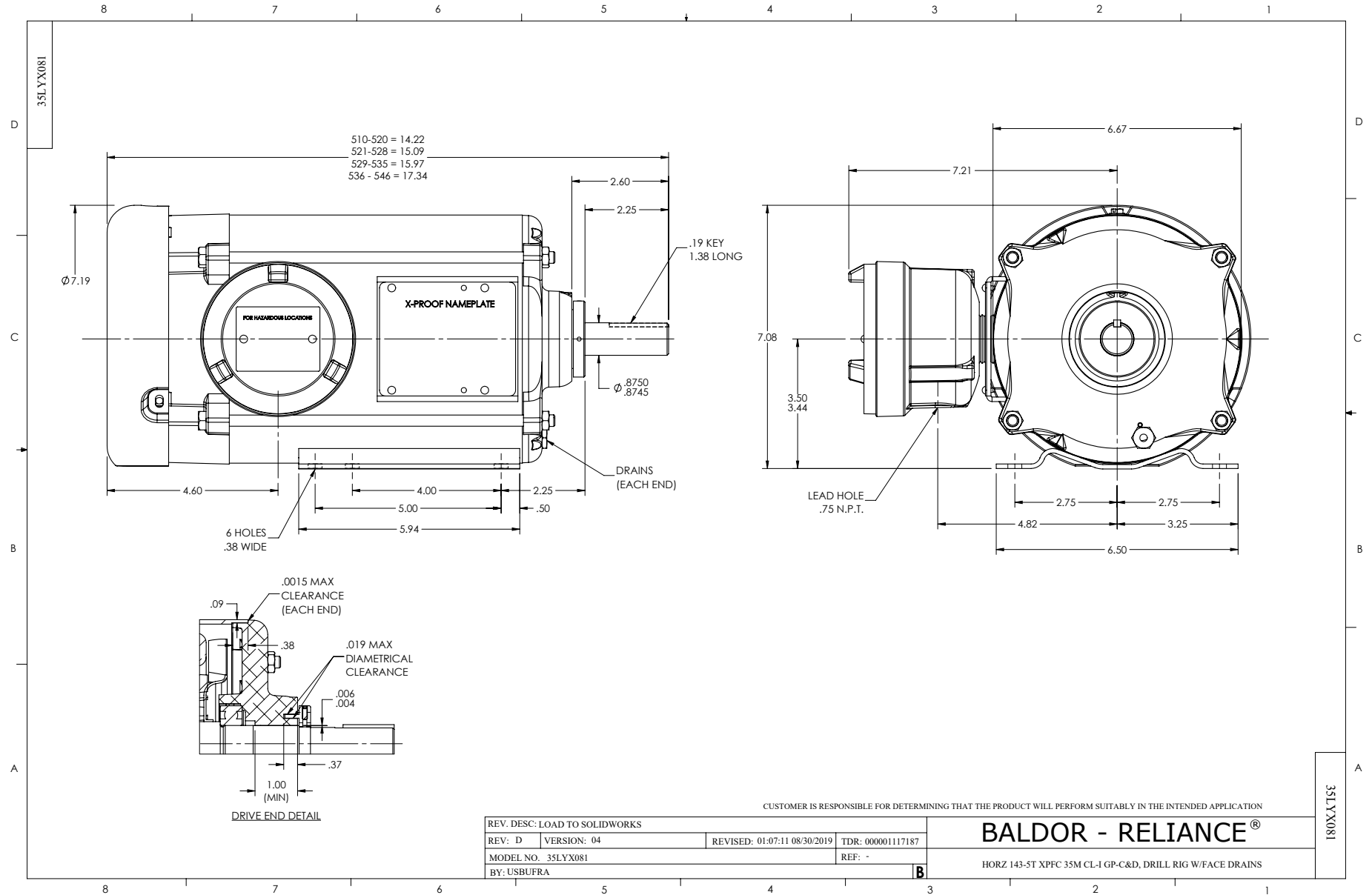
Winding: 35WGS921-R013		Type: 3516M		Enclosure: XPFC	
Nameplate Data			380 V, 50 Hz: High Voltage Connection		
Rated Output (HP)		1	Full Load Torque		1.36 LB-FT
Volts	230/460//190/380		Start Configuration		direct on line
Full Load Amps	2.8/1.4//2.6/1.3		Breakdown Torque		5.94 LB-FT
R.P.M.	3450//2875		Pull-up Torque		4.9 LB-FT
Hz	60//50 Phase	3	Locked-rotor Torque		5.82 LB-FT
NEMA Design Code	B KVA Code	L	Starting Current		11.24 A
Service Factor (S.F.)		1	No-load Current		0.669 A
NEMA Nom. Eff.	84 Power Factor	82	Line-line Res. @ 25°C		15.2 Ω
Rating - Duty	40C AMB-CONT		Temp. Rise @ Rated Load		30°C
			Locked-rotor Power Factor		62.7
			Rotor inertia		0.0443 LB-FT ²

Load Characteristics 380 V, 50 Hz, 0.75 HP

% of Rated Load	25	50	75	100	125	150
Power Factor	45	65	76	82	87	87
Efficiency	65.3	76.9	80.7	82.1	82.1	81.4
Speed	2968	2942	2916	2887	2857	2824
Line amperes	0.731	0.867	1.04	1.26	1.46	1.76

Performance Graph at 380V, 50Hz, 0.75HP Typical performance - Not guaranteed values

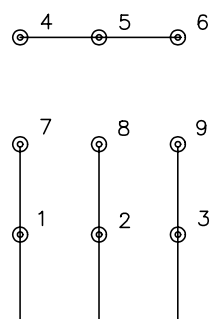




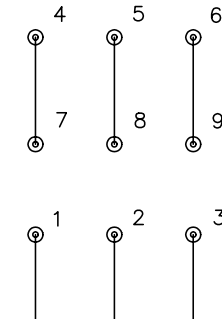
CD0005



LOW VOLTAGE
(2Y)



HIGH VOLTAGE
(1Y)



NOTES:

1. INTERCHANGE ANY TWO LINE LEADS TO REVERSE ROTATION.
2. OPTIONAL THERMOSTATS ARE PROVIDED WHEN SPECIFIED.
3. ACTUAL NUMBER OF INTERNAL PARALLEL CIRCUITS MAY BE A MULTIPLE OF THOSE SHOWN ABOVE.
4. LEAD COLORS ARE OPTIONAL. LEADS MUST ALWAYS BE NUMBERED AS SHOWN.

REV. DESC: REVISE TO SHOW OPTIONAL COLORS			
REV. LTR: E	BY: JLP	REVISED: 01/19/99 10:15	TDR: 0171435
90000		FILE: AAA00005140	MDL: -
		MTL: -	

BALDOR ELECTRIC Co.

3PH, DV, 9 LEADS

CD0005

Marketing maintained PDF of MN416:

<http://www.baldor.com/support/Literature/Load.ashx/MN416?ManNumber=MN416>