

**BALDOR® • RELIANCE** 

**Product Information Packet**

**DRX14224T**

**2HP,3490//2890RPM,3PH,60HZ,145T,XPFC,F1**

Part Detail							
Revision:	A	Status:	PRD/A	Change #:		Proprietary:	No
Type:	AC	Elec. Spec:	35WGM774	CD Diagram:	CD0005	Mfg Plant:	
Mech. Spec:		Layout:	35LYX081	Poles:	02	Created Date:	06-20-2019
Base:		Eff. Date:	06-15-2020	Leads:	9#18		

Specs			
Catalog Number:	DRX14224T	Duty Rating:	CONT
Enclosure:	XPFC	Electrically Isolated Bearing:	Not Electrically Isolated
Frame:	145T	Feedback Device:	NO FEEDBACK
Frame Material:	Steel	Heater Indicator:	No Heater
Output @ Frequency:	1.500 HP @ 50 HZ	Insulation Class:	F
	2.000 HP @ 60 HZ	Inverter Code:	Inverter Duty
Synchronous Speed @ Frequency:	3600 RPM @ 60 HZ	IP Rating:	NONE
Voltage @ Frequency:	230.0 V @ 60 HZ	KVA Code:	M
	190.0 V @ 50 HZ	Lifting Lugs:	No Lifting Lugs
	380.0 V @ 50 HZ	Locked Bearing Indicator:	Locked Bearing
	460.0 V @ 60 HZ	Motor Lead Termination:	Flying Leads
XP Class and Group:	CLI GP C,D	Motor Type:	3526M
XP Division:	Division I	Mounting Arrangement:	F1
Agency Approvals:	UR	Power Factor:	88
	CSA EEV	Product Family:	General Purpose
	CSA	Pulley Face Code:	Standard
Auxillary Box:	No Auxillary Box	Rodent Screen:	None
Auxillary Box Lead Termination:	None	RoHS Status:	ROHS NON-COMPLIANT

<b>Base Indicator:</b>	Rigid	<b>Shaft Ground Indicator:</b>	No Shaft Grounding
<b>Bearing Grease Type:</b>	Polyrex EM (-20F +300F)	<b>Shaft Rotation:</b>	Reversible
<b>Blower:</b>	None	<b>Speed Code:</b>	Single Speed
<b>Constant Torque Speed Range:</b>	6	<b>Motor Standards:</b>	NEMA
<b>Current @ Voltage:</b>	5.000 A @ 230.0 V	<b>Starting Method:</b>	Direct on line
	4.600 A @ 190.0 V	<b>Thermal Device - Bearing:</b>	None
	2.500 A @ 460.0 V	<b>Thermal Device - Winding:</b>	Normally Closed Thermostat
	2.300 A @ 380.0 V	<b>Vibration Sensor Indicator:</b>	No Vibration Sensor
<b>Design Code:</b>	B	<b>Winding Thermal 1:</b>	None
<b>Drip Cover:</b>	No Drip Cover	<b>Winding Thermal 2:</b>	None
		<b>XP Temp Code:</b>	T3C

Nameplate NP1401XPSLEV											
NO.						CC	010A				
S/N						TEMP CODE	T3C				
SPEC.	35-0000-0191					INV.TYPE	PWM				
CAT.NO.	DRX14224T					C HP FR	60		C HP TO	90	
HP	2//1.5					CT HZ FROM	6		CT HZ TO	60	
VOLTS	230/460//190/380					VT HZ FROM	6		VT HZ TO	60	
AMPS	5/2.5//4.6/2.3					MAG CUR	1.8/.9				
RPM	3490//2890					MX RPM	5400				
HZ	60//50		PH	3		CL	F		NOM.EFF.	85.5	
SER.F.	1.00		DES	B		SL HZ	1.8		WK2	0.07	
FRAME	145T		RATING	40C AMB-CONT							
	55C AMB @ 1.0SF										
	1.15 SF SINEWAVE					NEMA MG-1 PT 5,IP55					

Parts List		
Part Number	Description	Quantity
SA371023	SA 35-0000-0191	1.000 EA
RA360688	RA 35-0000-0191	1.000 EA
LB1119N	WARNING LABEL	1.000 EA
LC0145B01	CONNECTION LABEL	1.000 EA
NP1401XPSLEV	SS XP INV UL CSA-EEV CC CL-I GP-C&D	1.000 EA
85XU0407S04	4X1/4 U DRIVE PIN STAINLESS	2.000 EA
85XU0407S04	4X1/4 U DRIVE PIN STAINLESS	4.000 EA
MN416A01	TAG-INSTAL-MAINT no wire (2100/bx) 4/22	1.000 EA
LB1359F	ALUM XP CAUTION LABEL	1.000 EA
35FH4005A01SP	IEC FH NO GREASER W/PRIMED	1.000 EA
51XW1032A06	10-32 X .38, TAPTITE II, HEX WSHR SLTD S	3.000 EA
34FN3002B01	EXTERNAL FAN, PLASTIC, .637/.639 HUB W/	1.000 EA
51XB0818A12	8-18X3/4 HXWSSLD SERTYB	1.000 EA
MJ1000A02	GREASE, MOBIL POLYREX EM - 124047	0.050 LB
HA3104A08	THRUBOLT-5/16-18X9.375 X X	4.000 EA
XY3118A12	5/16-18 HEX NUT DIRECTIONAL SERRATION	4.000 EA
35EP1715A08	FREP XPFC 203 BRG GROUP "C" W/DRAIN	1.000 EA
HW5100A03	WAVY WASHER (W1543-017)	1.000 EA
HW4506A02	BREATHER/DRAIN-EXP PROOF-.125-27 NPTF AI	1.000 EA
HW3022E05	.125 DIA X .500 ROLLED SPRING PIN	1.000 EA
35EP3701B05	PUEP X-PROOF - 205 BRG GROUP C&E	1.000 EA
HA2009A86	SLINGER FOR GROUP E MTRS - 205 BRG.	1.000 EA
80XN0632J06	SET SCREW, 6-32 X 3/8", HEX SOCKET, AS	1.000 EA
HW4506A02	BREATHER/DRAIN-EXP PROOF-.125-27 NPTF AI	1.000 EA

<b>Parts List (continued)</b>		
<b>Part Number</b>	<b>Description</b>	<b>Quantity</b>
HW3022E05	.125 DIA X .500 ROLLED SPRING PIN	1.000 EA
35CB1005A01	CONDUIT BOX,MACH - GROUP "C" MTRS	1.000 EA
RM1020A41	O-RING, -150 BUNA-N, .103 CS X 2.862 ID	1.000 EA
11XW1032G06	10-32 X .38, TAPTITE II, HEX WSHR SLTD U	1.000 EA
HW3001B01	BRASS CUP WASHER, FOR #10 SCREW	1.000 EA
35CB1501A01	CONDUIT BOX LID, MACH. - GROUP "C" MTRS	1.000 EA
MG1500Y02	WILKOPON PRIMER YELLOW	0.022 GA
MG1025G29	WILKOFASST, 789.229, DARK CHARCOAL GRAY	0.022 GA
36PA1000	PKG GRP, PRINT PK1016A06	1.000 EA
HW2501D13	KEY, 3/16 SQ X 1.375	1.000 EA
HA7000A01	KEY RETAINER 7/8" DIA SHAFT	1.000 EA

**AC Induction Motor Performance Data**

Record # 76613

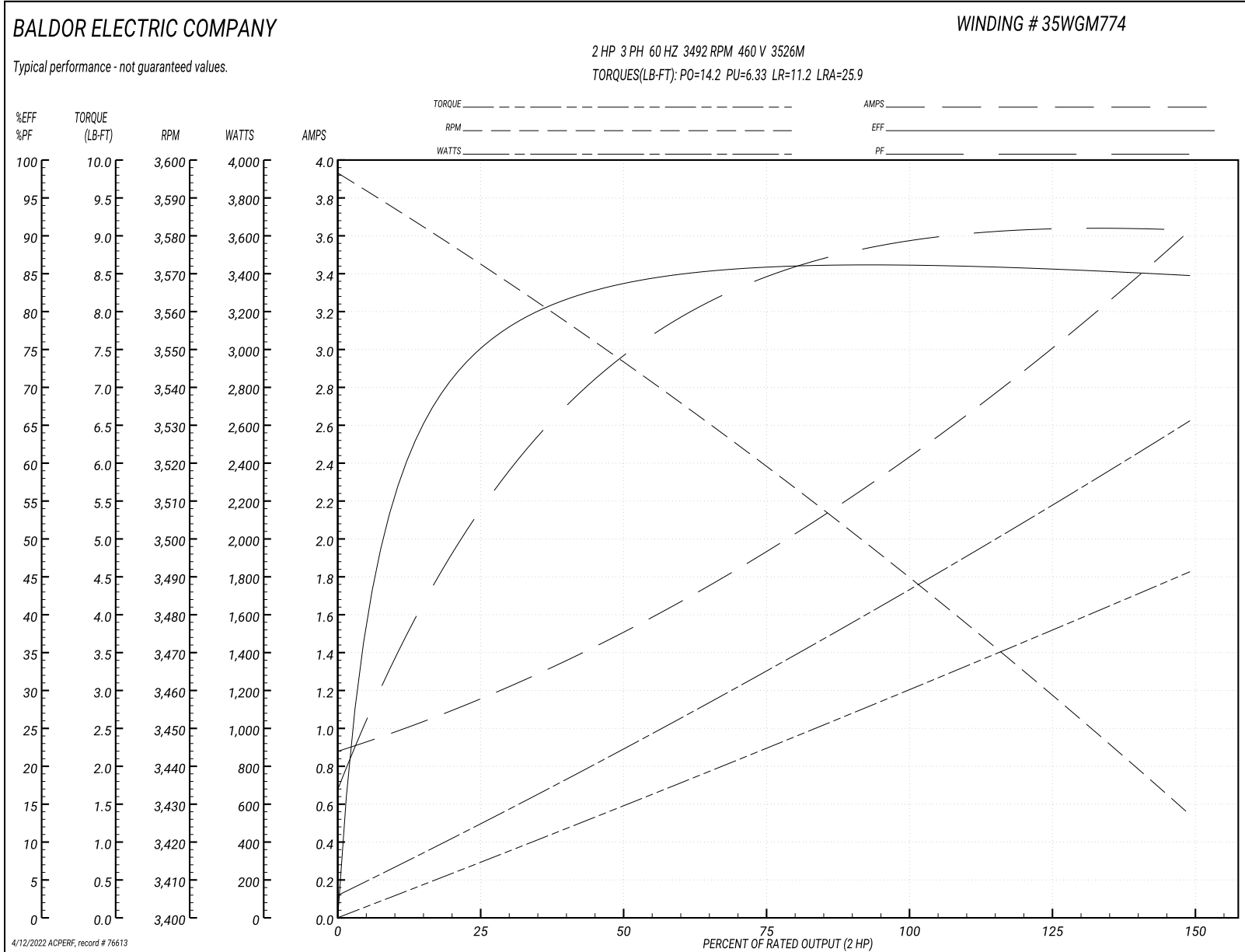
Typical performance - not guaranteed values

<b>Winding: 35WGM774-R025</b>		<b>Type: 3526M</b>		<b>Enclosure: TEFC</b>	
<b>Nameplate Data</b>			<b>460 V, 60 Hz: High Voltage Connection</b>		
<b>Rated Output (HP)</b>	2	<b>Full Load Torque</b>	2.98 LB-FT		
<b>Volts</b>	230/460//190/380	<b>Start Configuration</b>	direct on line		
<b>Full Load Amps</b>	5/2.5//4.6/2.3	<b>Breakdown Torque</b>	14.2 LB-FT		
<b>R.P.M.</b>	3490//2890	<b>Pull-up Torque</b>	6.33 LB-FT		
<b>Hz</b>	60//50 <b>Phase</b>	3	<b>Locked-rotor Torque</b>	11.2 LB-FT	
<b>NEMA Design Code</b>	<b>B KVA Code</b>	M	<b>Starting Current</b>	25.9 A	
<b>Service Factor (S.F.)</b>		1	<b>No-load Current</b>	0.912 A	
<b>NEMA Nom. Eff.</b>	85.5 <b>Power Factor</b>	88	<b>Line-line Res. @ 25°C</b>	6.88 Ω	
<b>Rating - Duty</b>	40C AMB-CONT		<b>Temp. Rise @ Rated Load</b>	44°C	
			<b>Locked-rotor Power Factor</b>	49.9	
			<b>Rotor inertia</b>	0.0719 LB-FT <sup>2</sup>	

**Load Characteristics 460 V, 60 Hz, 2 HP**

<b>% of Rated Load</b>	<b>25</b>	<b>50</b>	<b>75</b>	<b>100</b>	<b>125</b>	<b>150</b>
<b>Power Factor</b>	55	75	84	88	90	91
<b>Efficiency</b>	73.4	83.6	85.7	86.3	85.7	84.6
<b>Speed</b>	3572	3547	3520	3492	3461	3426
<b>Line amperes</b>	1.1	1.47	1.93	2.44	3	3.61

Performance Graph at 460V, 60Hz, 2.0HP Typical performance - Not guaranteed values





**AC Induction Motor Performance Data**

Record # 76614

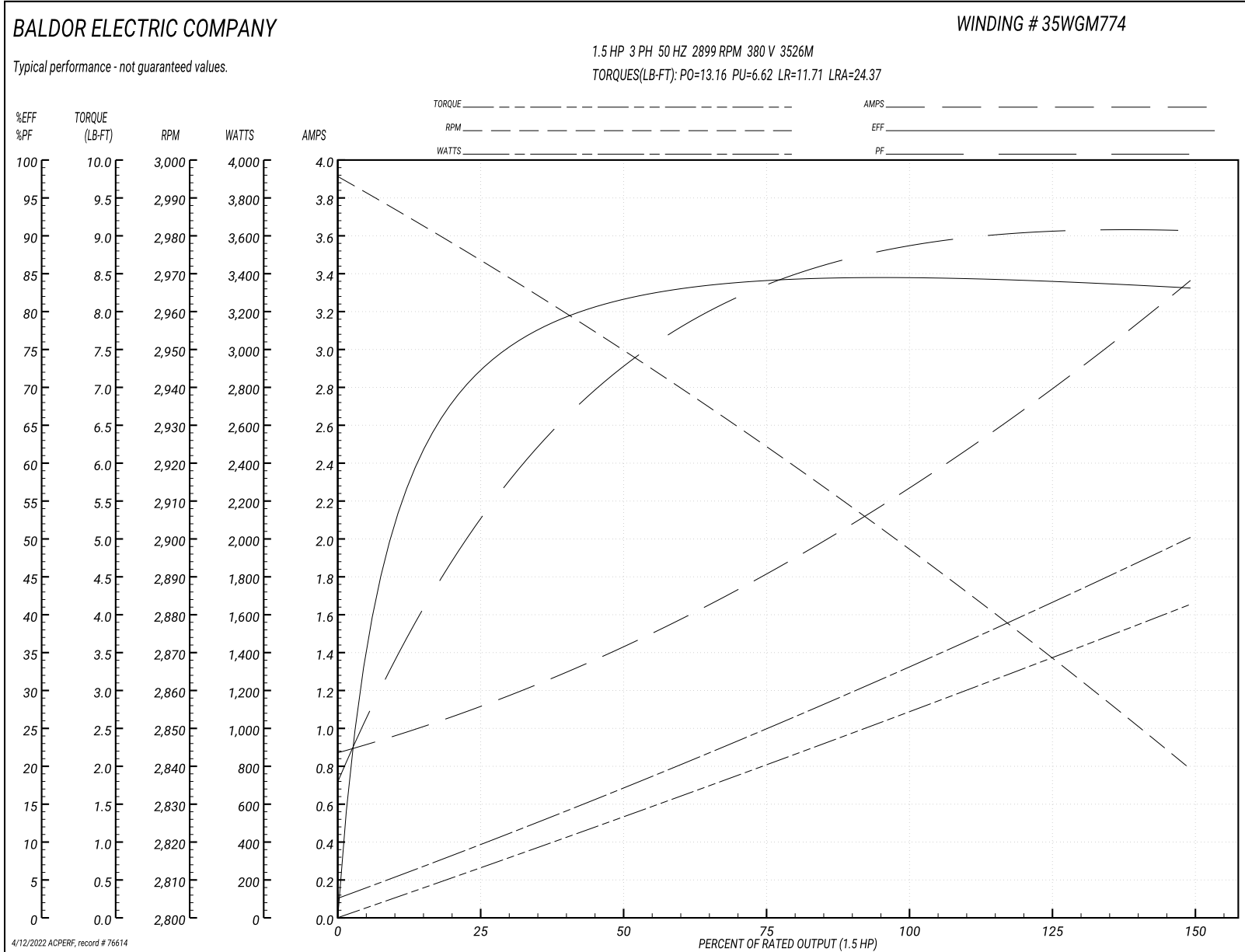
Typical performance - not guaranteed values

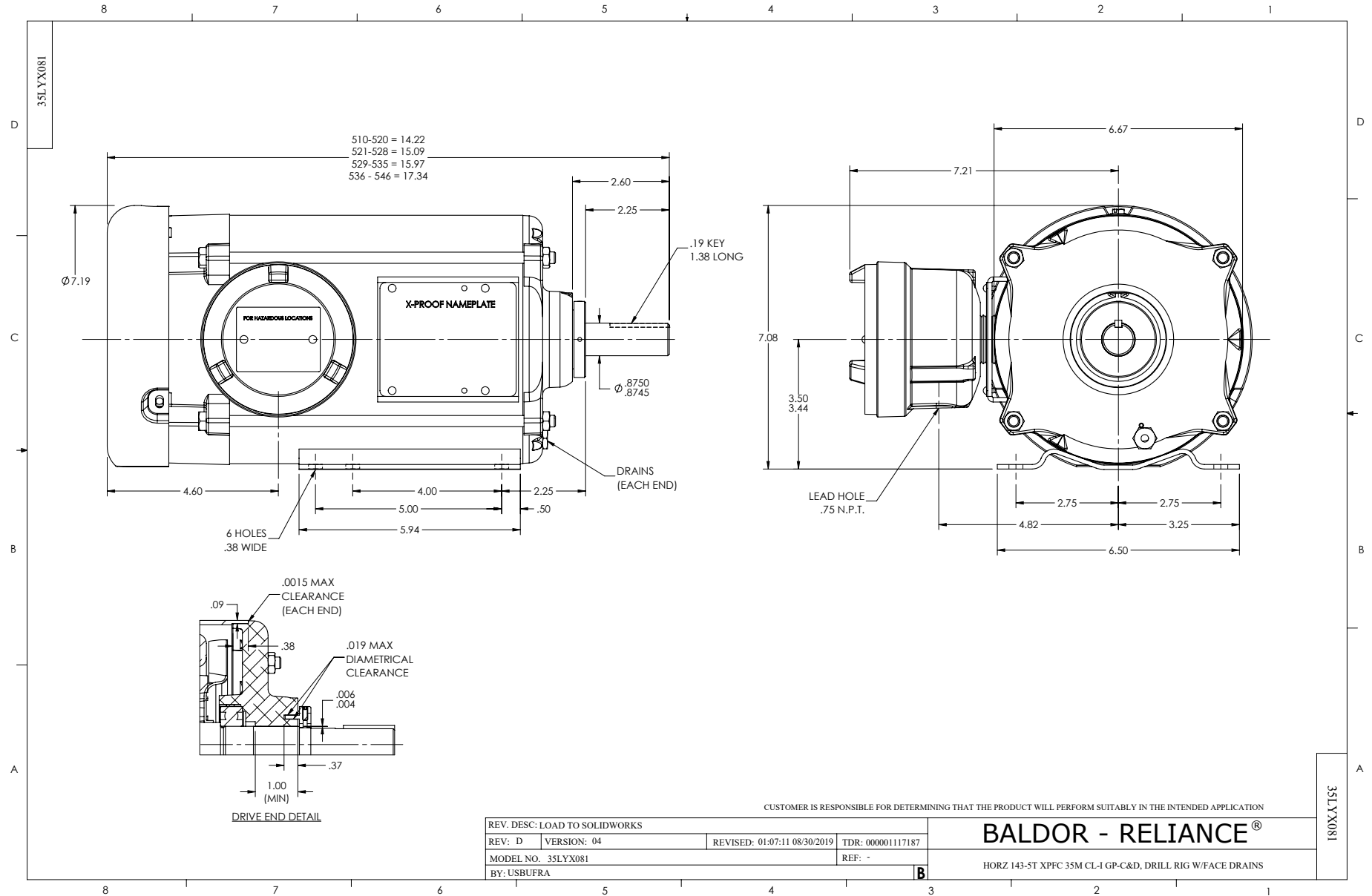
<b>Winding: 35WGM774-R025</b>		<b>Type: 3526M</b>		<b>Enclosure: TEFC</b>	
<b>Nameplate Data</b>			<b>380 V, 50 Hz: High Voltage Connection</b>		
<b>Rated Output (HP)</b>	2	<b>Full Load Torque</b>	2.69 LB-FT		
<b>Volts</b>	230/460//190/380	<b>Start Configuration</b>	direct on line		
<b>Full Load Amps</b>	5/2.5//4.6/2.3	<b>Breakdown Torque</b>	13.16 LB-FT		
<b>R.P.M.</b>	3490//2890	<b>Pull-up Torque</b>	6.62 LB-FT		
<b>Hz</b>	60//50 <b>Phase</b>	3	<b>Locked-rotor Torque</b>	11.71 LB-FT	
<b>NEMA Design Code</b>	<b>B KVA Code</b>	M	<b>Starting Current</b>	24.37 A	
<b>Service Factor (S.F.)</b>		1	<b>No-load Current</b>	0.898 A	
<b>NEMA Nom. Eff.</b>	85.5 <b>Power Factor</b>	88	<b>Line-line Res. @ 25°C</b>	6.88 Ω	
<b>Rating - Duty</b>	40C AMB-CONT		<b>Temp. Rise @ Rated Load</b>	39°C	
			<b>Locked-rotor Power Factor</b>	56.4	
			<b>Rotor inertia</b>	0.0719 LB-FT <sup>2</sup>	

**Load Characteristics 380 V, 50 Hz, 1.5 HP**

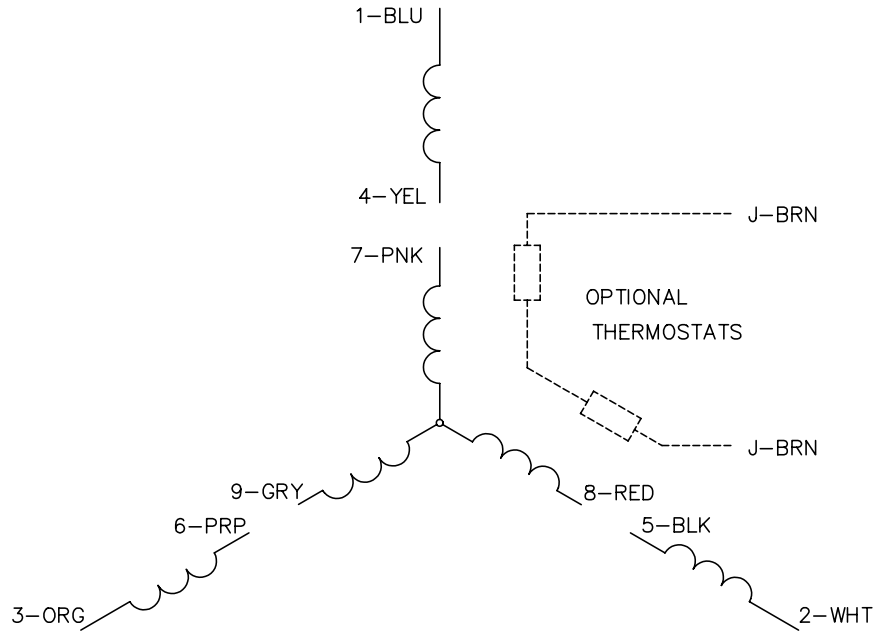
<b>% of Rated Load</b>	<b>25</b>	<b>50</b>	<b>75</b>	<b>100</b>	<b>125</b>	<b>150</b>
<b>Power Factor</b>	53	74	83	87	90	91
<b>Efficiency</b>	70.4	81.5	84	84.5	84.2	83
<b>Speed</b>	2973	2950	2925	2899	2871	2838
<b>Line amperes</b>	1.07	1.4	1.81	2.28	2.78	3.35

Performance Graph at 380V, 50Hz, 1.5HP Typical performance - Not guaranteed values

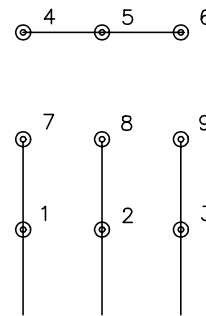




CD0005

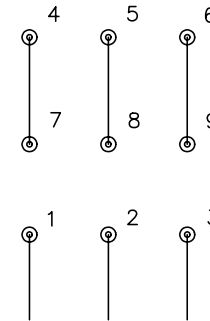


LOW VOLTAGE  
(2Y)



LINE

HIGH VOLTAGE  
(1Y)



LINE

NOTES:

1. INTERCHANGE ANY TWO LINE LEADS TO REVERSE ROTATION.
2. OPTIONAL THERMOSTATS ARE PROVIDED WHEN SPECIFIED.
3. ACTUAL NUMBER OF INTERNAL PARALLEL CIRCUITS MAY BE A MULTIPLE OF THOSE SHOWN ABOVE.
4. LEAD COLORS ARE OPTIONAL. LEADS MUST ALWAYS BE NUMBERED AS SHOWN.

REV. DESC: REVISE TO SHOW OPTIONAL COLORS

REV. LTR: E BY: JLP

REVISED: 01/19/99 10:15

TDR: 0171435

90000

FILE: AAA00005140

MDL: -

MTL: -

**BALDOR ELECTRIC Co.**

3PH, DV, 9 LEADS

CD0005

Marketing maintained PDF of MN416:

<http://www.baldor.com/support/Literature/Load.ashx/MN416?ManNumber=MN416>