

BALDOR® • RELIANCE 

Product Information Packet

DRX14244T

2HP,1755//1450RPM,3PH,60HZ,145T,XPFC,F1

Part Detail							
Revision:	B	Status:	PRD/A	Change #:		Proprietary:	No
Type:	AC	Elec. Spec:	35WGN909	CD Diagram:	CD0005	Mfg Plant:	
Mech. Spec:		Layout:	35LYX081	Poles:	04	Created Date:	03-21-2019
Base:		Eff. Date:	10-01-2020	Leads:	9#18		

Specs			
Catalog Number:	DRX14244T	Electrically Isolated Bearing:	Not Electrically Isolated
Enclosure:	XPFC	Feedback Device:	NO FEEDBACK
Frame:	145T	Heater Indicator:	No Heater
Frame Material:	Steel	Insulation Class:	F
Output @ Frequency:	2.000 HP @ 60 HZ	Inverter Code:	Inverter Duty
	1.500 HP @ 60 HZ	IP Rating:	NONE
Synchronous Speed @ Frequency:	1800 RPM @ 60 HZ	KVA Code:	L
Voltage @ Frequency:	460.0 V @ 60 HZ	Lifting Lugs:	No Lifting Lugs
	230.0 V @ 60 HZ	Locked Bearing Indicator:	Locked Bearing
XP Class and Group:	CLI GP C,D	Motor Lead Termination:	Flying Leads
XP Division:	Division I	Motor Type:	3528M
Agency Approvals:	CSA	Mounting Arrangement:	F1
	CSA EEV	Power Factor:	74
	UR	Product Family:	General Purpose
Auxillary Box:	No Auxillary Box	Pulley Face Code:	Standard
Auxillary Box Lead Termination:	None	Rodent Screen:	None
Base Indicator:	Rigid	RoHS Status:	ROHS NON-COMPLIANT
Bearing Grease Type:	Polyrex EM (-20F +300F)	Shaft Ground Indicator:	No Shaft Grounding

Blower:	None	Shaft Rotation:	Reversible
Constant Torque Speed Range:	6	Speed Code:	Single Speed
Current @ Voltage:	5.800 A @ 230.0 V	Motor Standards:	NEMA
	5.400 A @ 190.0 V	Starting Method:	Direct on line
	2.900 A @ 460.0 V	Thermal Device - Bearing:	None
	2.700 A @ 380.0 V	Thermal Device - Winding:	Normally Closed Thermostat
Design Code:	B	Vibration Sensor Indicator:	No Vibration Sensor
Drip Cover:	No Drip Cover	Winding Thermal 1:	None
Duty Rating:	CONT	Winding Thermal 2:	None
		XP Temp Code:	T3C

Nameplate NP1401XPSLEV											
NO.						CC	010A				
S/N						TEMP CODE	T3C				
SPEC.	35-0000-0077					INV.TYPE	PWM				
CAT.NO.	DRX14244T					C HP FR	60		C HP TO	90	
HP	2/1.5					CT HZ FROM	6		CT HZ TO	60	
VOLTS	230/460//190/380					VT HZ FROM	6		VT HZ TO	60	
AMPS	5.8/2.9//5.4/2.7					MAG CUR	3.6/1.8				
RPM	1755//1450					MX RPM	2700				
HZ	60		PH	3		CL	F		NOM.EFF.	86.5	
SER.F.	1.00		DES	B		SL HZ	1.5		WK2	0.17	
FRAME	145T		RATING	40C AMB-CONT							
	55C AMB @ 1.0 SF										
	1.15 SF SINEWAVE					NEMA MG-1 PT 5,IP55					

Parts List		
Part Number	Description	Quantity
SA367604	SA 35-0000-0077	1.000 EA
RA357074	RA 35-0000-0077	1.000 EA
LB1119N	WARNING LABEL	1.000 EA
LC0145B01	CONNECTION LABEL	1.000 EA
NP1401XPSLEV	SS XP INV UL CSA-EEV CC CL-I GP-C&D	1.000 EA
85XU0407S04	4X1/4 U DRIVE PIN STAINLESS	2.000 EA
85XU0407S04	4X1/4 U DRIVE PIN STAINLESS	4.000 EA
MN416A01	TAG-INSTAL-MAINT no wire (2100/bx) 4/22	1.000 EA
LB1359F	ALUM XP CAUTION LABEL	1.000 EA
35FH4005A01SP	IEC FH NO GREASER W/PRIMED	1.000 EA
51XW1032A06	10-32 X .38, TAPTITE II, HEX WSHR SLTD S	3.000 EA
35FN3002A05SP	EXFN, PLASTIC, 6.376 OD, .638 ID	1.000 EA
MJ1000A02	GREASE, MOBIL POLYREX EM - 124047	0.050 LB
HA3104A08	THRUBOLT-5/16-18X9.375 X X	4.000 EA
XY3118A12	5/16-18 HEX NUT DIRECTIONAL SERRATION	4.000 EA
35EP1715A08	FREP XPFC 203 BRG GROUP "C" W/DRAIN	1.000 EA
HW5100A03	WAVY WASHER (W1543-017)	1.000 EA
HW4506A02	BREATHER/DRAIN-EXP PROOF-.125-27 NPTF AI	1.000 EA
HW3022E05	.125 DIA X .500 ROLLED SPRING PIN	1.000 EA
35EP3701B05	PUEP X-PROOF - 205 BRG GROUP C&E	1.000 EA
HA2009A86	SLINGER FOR GROUP E MTRS - 205 BRG.	1.000 EA
80XN0632J06	SET SCREW, 6-32 X 3/8", HEX SOCKET, AS	1.000 EA
HW4506A02	BREATHER/DRAIN-EXP PROOF-.125-27 NPTF AI	1.000 EA
HW3022E05	.125 DIA X .500 ROLLED SPRING PIN	1.000 EA

Parts List (continued)		
Part Number	Description	Quantity
35CB1005A01	CONDUIT BOX,MACH - GROUP "C" MTRS	1.000 EA
RM1020A41	O-RING, -150 BUNA-N, .103 CS X 2.862 ID	1.000 EA
11XW1032G06	10-32 X .38, TAPTITE II, HEX WSHR SLTD U	1.000 EA
HW3001B01	BRASS CUP WASHER, FOR #10 SCREW	1.000 EA
35CB1501A01	CONDUIT BOX LID, MACH. - GROUP "C" MTRS	1.000 EA
MG1500Y02	WILKOPON PRIMER YELLOW	0.001 GA
MG1025G29	WILKOFAS, 789.229, DARK CHARCOAL GRAY	0.022 GA
36PA1000	PKG GRP, PRINT PK1016A06	1.000 EA
HW2501D13	KEY, 3/16 SQ X 1.375	1.000 EA
HA7000A01	KEY RETAINER 7/8" DIA SHAFT	1.000 EA

AC Induction Motor Performance Data

Record # 74913

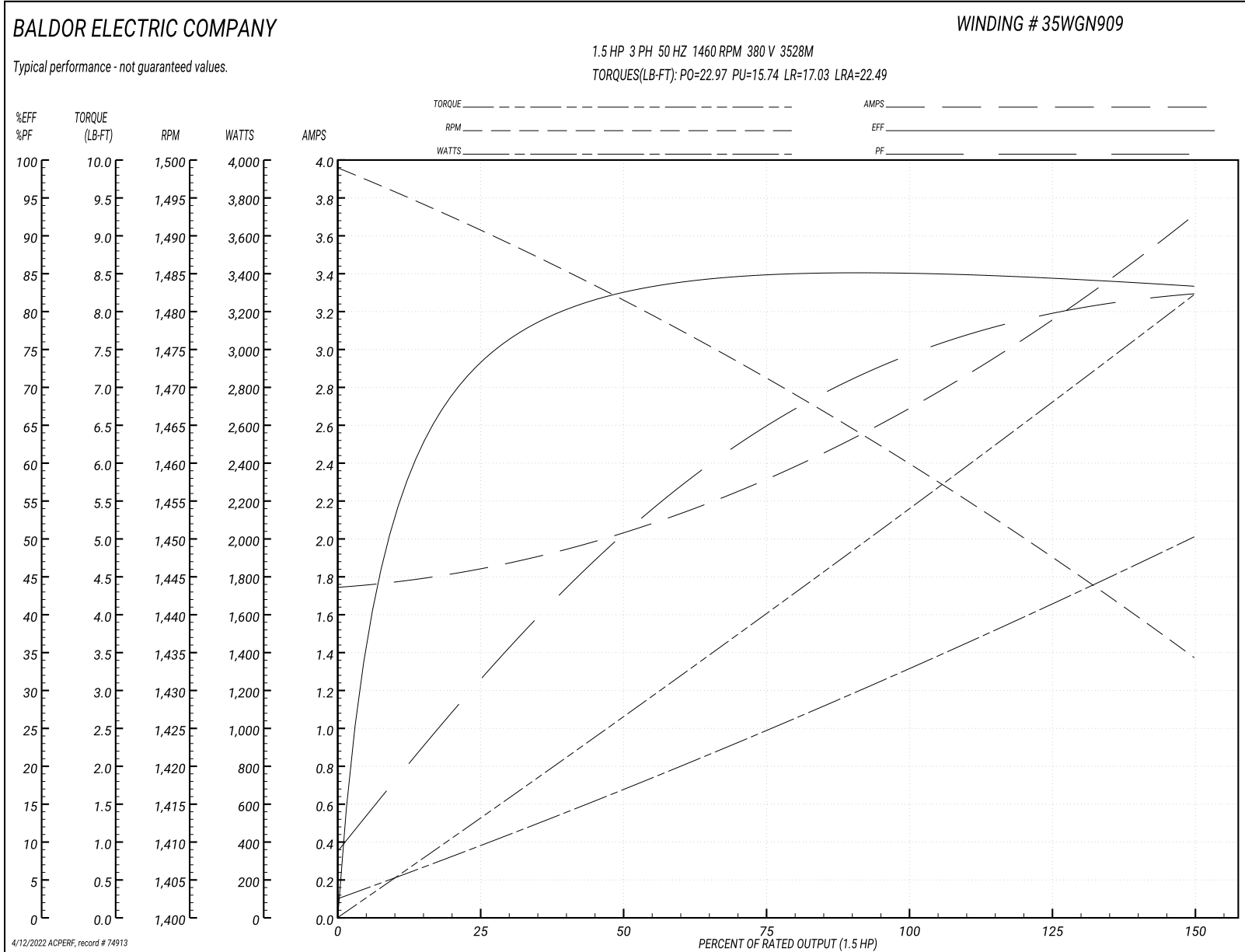
Typical performance - not guaranteed values

Winding: 35WGN909-R011		Type: 3528M		Enclosure: XPFC	
Nameplate Data			380 V, 50 Hz: High Voltage Connection		
Rated Output (HP)		2	Full Load Torque		5.4 LB-FT
Volts		230/460//190/380	Start Configuration		direct on line
Full Load Amps		5.8/2.9//5.4/2.7	Breakdown Torque		22.97 LB-FT
R.P.M.		1755//1450	Pull-up Torque		15.74 LB-FT
Hz	60 Phase		Locked-rotor Torque		17.03 LB-FT
NEMA Design Code	B KVA Code	L	Starting Current		22.49 A
Service Factor (S.F.)		1	No-load Current		1.76 A
NEMA Nom. Eff.	86.5 Power Factor	74	Line-line Res. @ 25°C		8.02 Ω
Rating - Duty		40C AMB-CONT	Temp. Rise @ Rated Load		59°C
S.F. Amps			Temp. Rise @ S.F. Load		70°C
			Locked-rotor Power Factor		57.8
			Rotor inertia		0.165 LB-FT ²

Load Characteristics 380 V, 50 Hz, 1.5 HP

% of Rated Load	25	50	75	100	125	150
Power Factor	32	52	65	73	80	83
Efficiency	72.8	82.2	84.8	85.2	84.5	83.2
Speed	1491	1481	1471	1460	1448	1434
Line amperes	1.83	2.01	2.32	2.72	3.16	3.7

Performance Graph at 380V, 50Hz, 1.5HP Typical performance - Not guaranteed values



AC Induction Motor Performance Data

Record # 74914

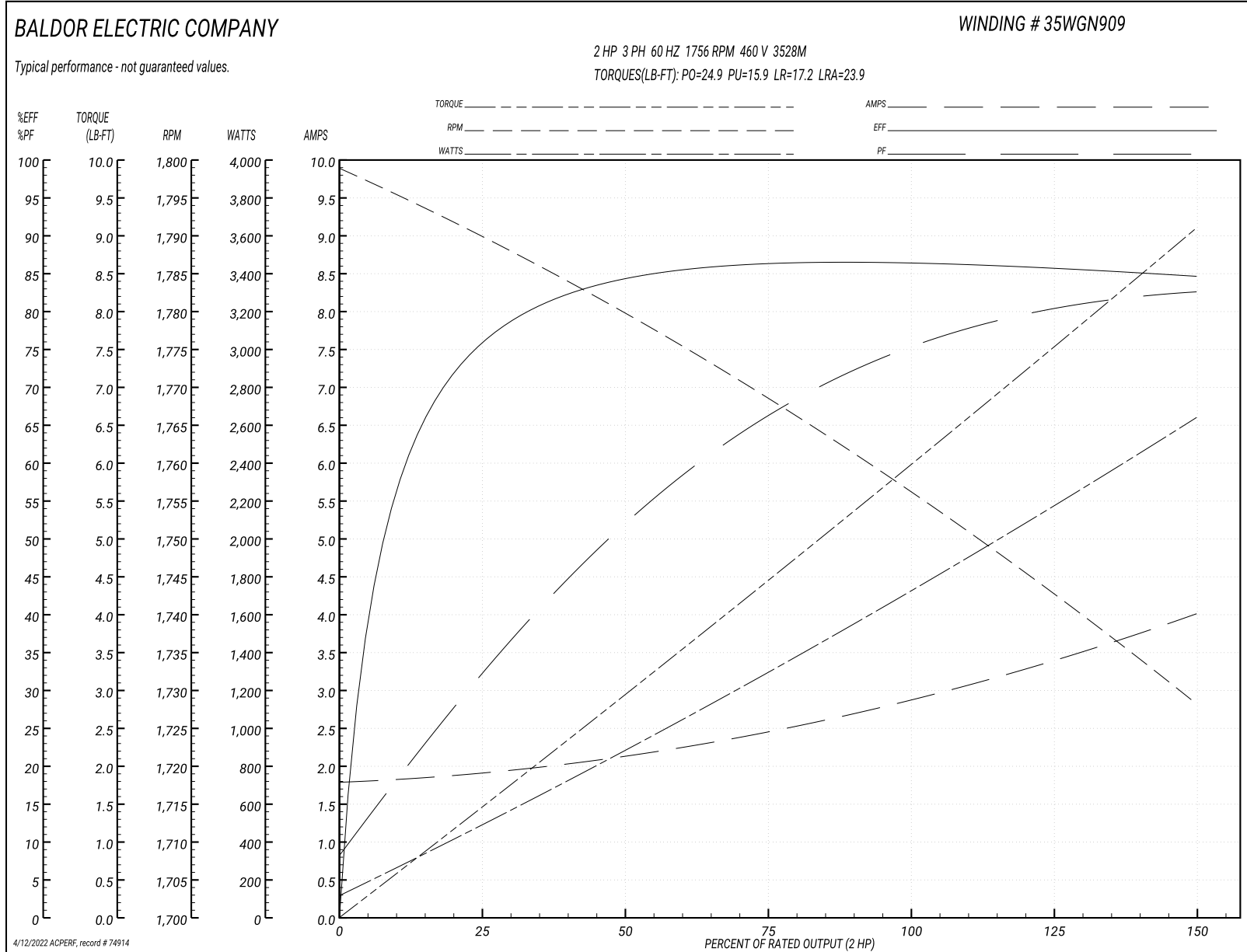
Typical performance - not guaranteed values

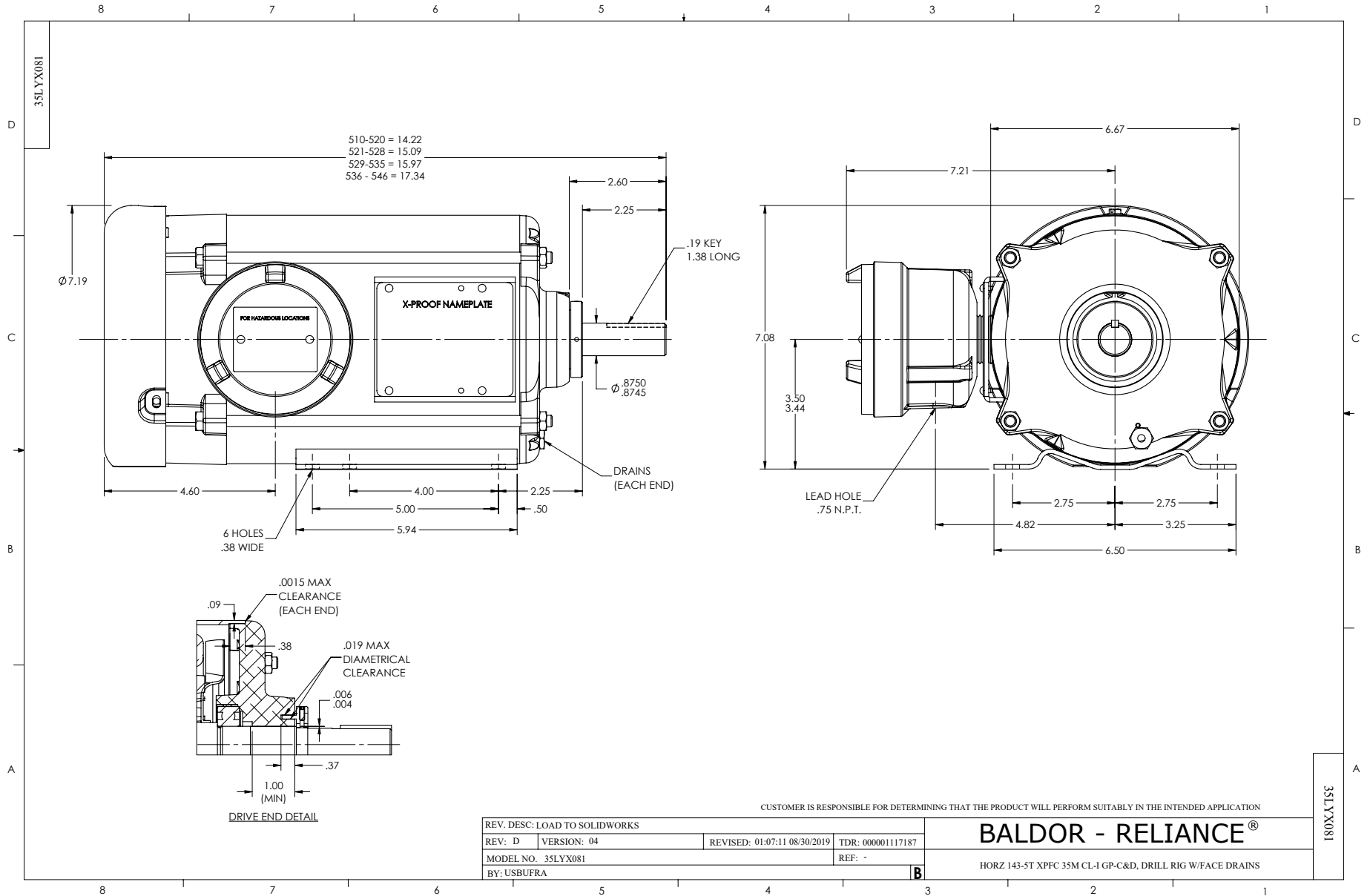
Winding: 35WGN909-R011		Type: 3528M	Enclosure: XPFC	
Nameplate Data			460 V, 60 Hz: High Voltage Connection	
Rated Output (HP)	2	Full Load Torque	5.99 LB-FT	
Volts	230/460//190/380	Start Configuration	direct on line	
Full Load Amps	5.8/2.9//5.4/2.7	Breakdown Torque	24.9 LB-FT	
R.P.M.	1755//1450	Pull-up Torque	15.9 LB-FT	
Hz	60 Phase	Locked-rotor Torque	17.2 LB-FT	
NEMA Design Code	B KVA Code	Starting Current	23.9 A	
Service Factor (S.F.)	1	No-load Current	1.81 A	
NEMA Nom. Eff.	86.5 Power Factor	Line-line Res. @ 25°C	8.02 Ω	
Rating - Duty	40C AMB-CONT	Temp. Rise @ Rated Load	65°C	
S.F. Amps		Temp. Rise @ S.F. Load	77°C	
		Locked-rotor Power Factor	52.4	
		Rotor inertia	0.165 LB-FT ²	

Load Characteristics 460 V, 60 Hz, 2 HP

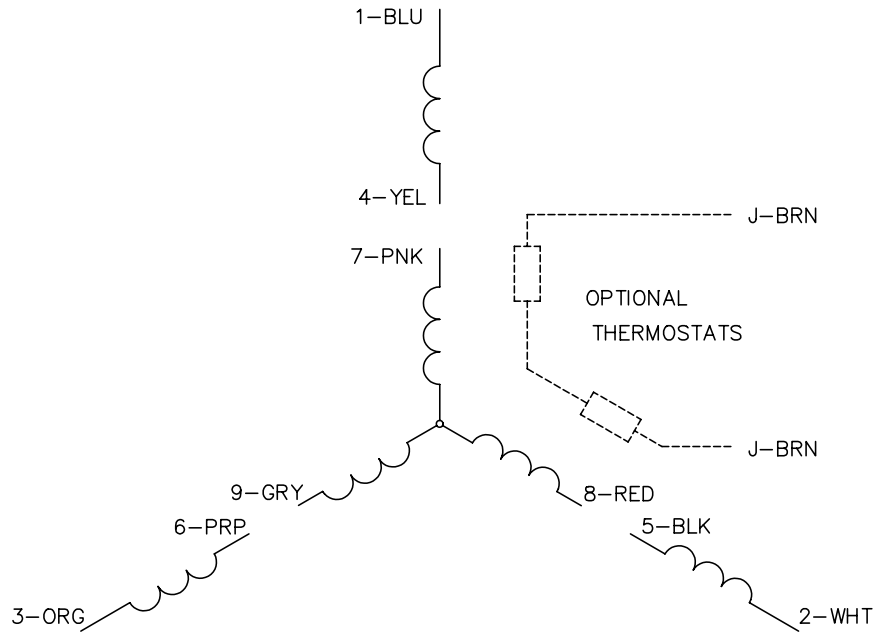
% of Rated Load	25	50	75	100	125	150
Power Factor	33	53	66	74	80	83
Efficiency	75.5	84	86.3	86.5	85.8	84.5
Speed	1790	1779	1769	1756	1743	1728
Line amperes	1.89	2.11	2.46	2.91	3.4	4

Performance Graph at 460V, 60Hz, 2.0HP Typical performance - Not guaranteed values

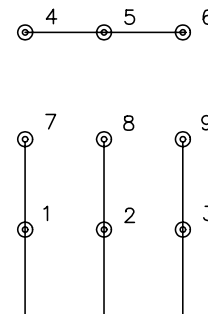




CD0005

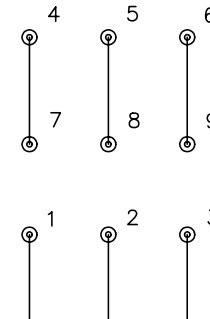


LOW VOLTAGE
(2Y)



LINE

HIGH VOLTAGE
(1Y)



LINE

NOTES:

1. INTERCHANGE ANY TWO LINE LEADS TO REVERSE ROTATION.
2. OPTIONAL THERMOSTATS ARE PROVIDED WHEN SPECIFIED.
3. ACTUAL NUMBER OF INTERNAL PARALLEL CIRCUITS MAY BE A MULTIPLE OF THOSE SHOWN ABOVE.
4. LEAD COLORS ARE OPTIONAL. LEADS MUST ALWAYS BE NUMBERED AS SHOWN.

REV. DESC: REVISE TO SHOW OPTIONAL COLORS			
REV. LTR: E	BY: JLP	REVISED: 01/19/99 10:15	TDR: 0171435
900000		FILE: AAA00005140	MDL: -
		MTL: -	

BALDOR ELECTRIC Co.

3PH, DV, 9 LEADS

CD0005

Marketing maintained PDF of MN416:

<http://www.baldor.com/support/Literature/Load.ashx/MN416?ManNumber=MN416>