

BALDOR • RELIANCE

Customer information packet

DRX36644T-5

60HP, 1780RPM, 3PH, 60HZ, 364T, TEFC, F1

Class - CLI GP C,D

Division - Division I

Specifications

| | |
|-------------------------------|---------------------------------|
| Enclosure | TEFC |
| Frame | 364T |
| Frame Material | Iron |
| Frequency | 60.00 Hz |
| Motor Letter Type | Three Phase |
| Output @ Frequency | 60.000 HP @ 60 HZ |
| Phase | 3 |
| Synchronous Speed @ Frequency | 1800 RPM @ 60 HZ |
| Voltage @ Frequency | 575.0 V @ 60 HZ |
| XP Class and Group | CLI GP C,D |
| XP Division | Division I |
| Agency Approvals | CCSA US CSA CSA EEV UL |
| Ambient Temperature | 40 °C |
| Auxillary Box | No Auxillary Box |
| Base Indicator | Rigid |
| Bearing Grease Type | Polyrex EM (-20F +300F) |
| Constant Torque Speed Range | 6-60 |
| Current @ Voltage | 54.700 A @ 575.0 V |
| Design Code | B |
| Drip Cover | No Drip Cover |
| Duty Rating | CONT |
| Efficiency @ 100% Load | 95.0 % |
| Feedback Device | NO FEEDBACK |
| Heater Indicator | No Heater |
| High Voltage Full Load Amps | 54.7 a |
| Insulation Class | F |
| Inverter Code | Inverter Ready |
| IP Rating | IP55 |
| KVA Code | G |

Part detail


| | |
|--------------|------------|
| Revision | A |
| Type | AC |
| Mech. spec. | |
| Base | |
| Status | PRD/A |
| Elec. spec. | A36WG4040 |
| Layout | 611742-772 |
| Eff. date | 02-10-2021 |
| CD Diagram | 416820-036 |
| Poles | 04 |
| Leads | 3#4 |
| Proprietary | False |
| Created date | 07-11-2019 |

| Lifting Lugs | Standard Lifting Lugs |
|-------------------------------|----------------------------|
| Max Speed | 3600 rpm |
| Motor Lead Quantity/Wire Size | 3 @ 4 AWG |
| Motor Standards | NEMA |
| Motor Type | A3670M |
| Mounting Arrangement | F1 |
| Number of Poles | 4 |
| Overall Length | 33.48 IN |
| Power Factor | 87 |
| Product Family | General Industrial |
| Pulley End Bearing Type | Ball |
| Pulley Face Code | Standard |
| Service Factor | 1.00 |
| Shaft Diameter | 2.374 IN |
| Shaft Ground Indicator | No Shaft Grounding |
| Shaft Rotation | Reversible |
| Shaft Slinger Indicator | Shaft Slinger |
| Speed | 1780 rpm |
| Speed Code | Single Speed |
| Starting Method | Direct on line |
| Thermal Device - Bearing | None |
| Thermal Device - Winding | Normally Closed Thermostat |
| XP Temp Code | T3C |

Nameplate

| | |
|------------------|--|
| NP2496L | |
| MOBIL POLYREX EM | |
| | |

000692000FX



000613006PC

CLASS I GROUP C D X **NO.****CLASS II GROUP** X X X**OPERATING TEMP CODE** T3C

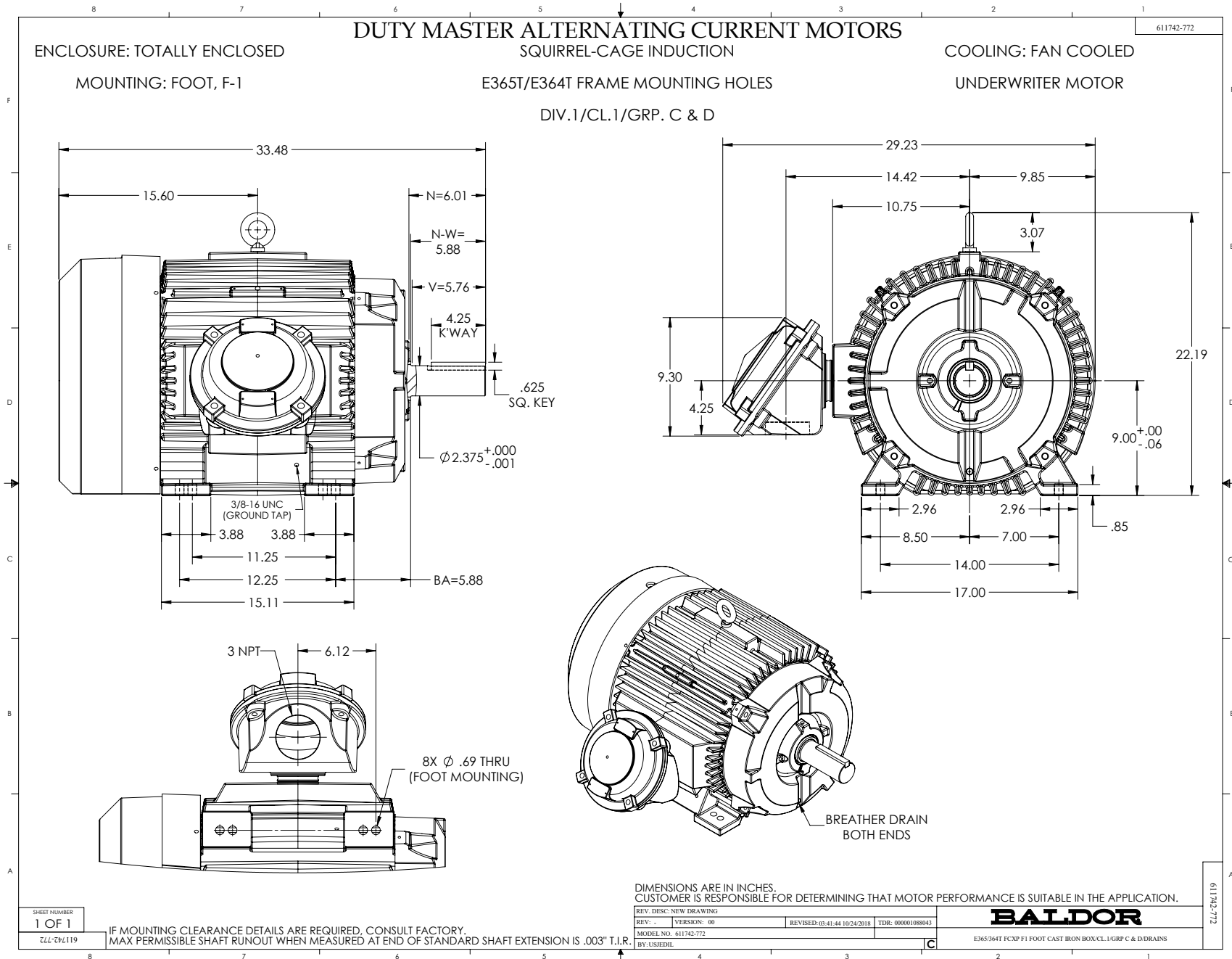
NP3140L

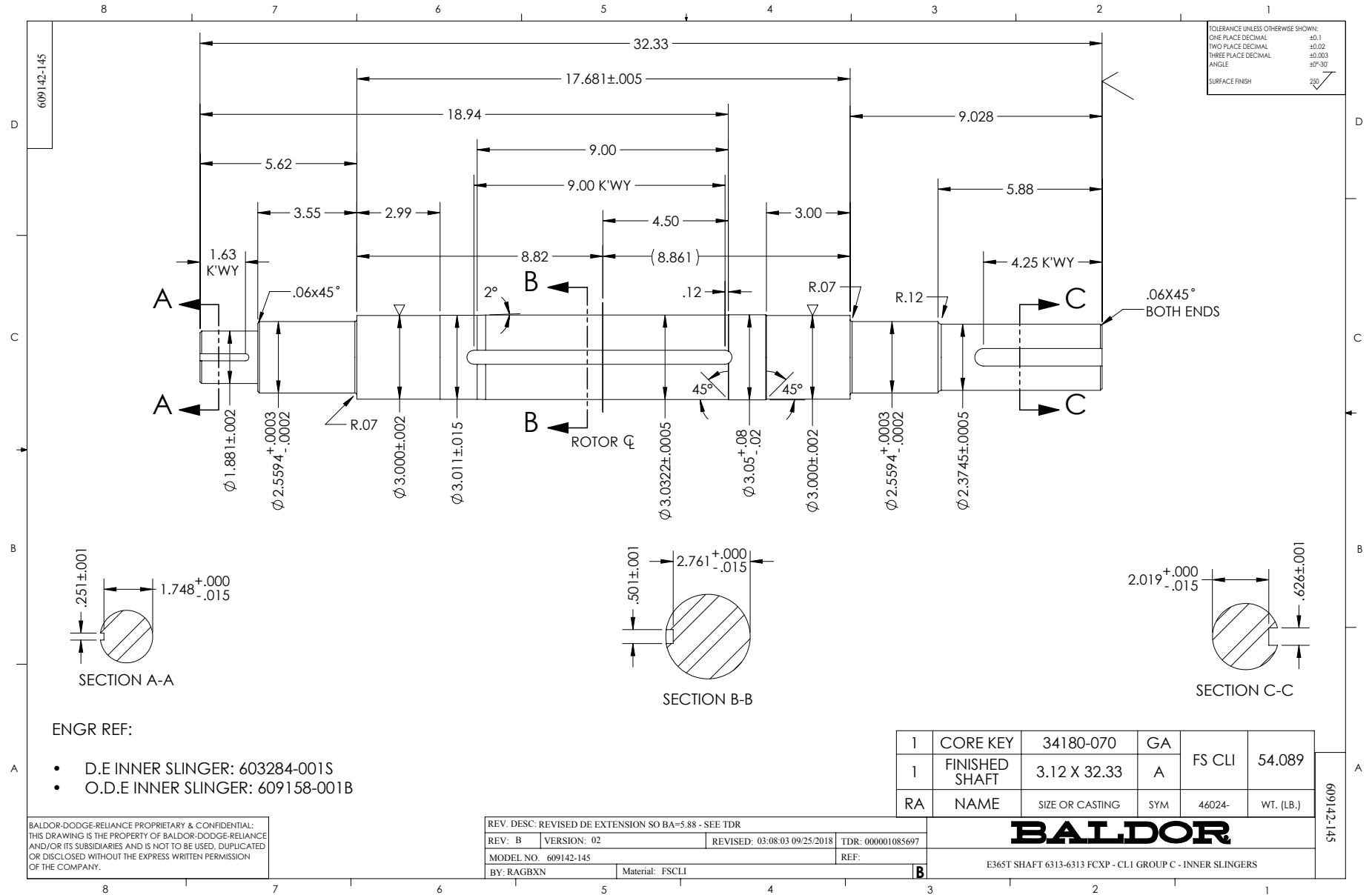
| | | | | | | | | | |
|--------------------------|-----------------------------|----------------|-------------|---------------------|-------|---------------------|------|-------------|------|
| SPEC NO. | A36-0062-4040 | CAT.NO. | DRX36644T-5 | | | FRAME | 364T | | |
| HP | 60 | VOLTS | 575 | PHASE | 3 | DESIGN | B | TYPE | P |
| RPM | 1780 | AMPS | 54.7 | HZ | 60 | AMB | 40 | SF | 1.00 |
| DRIVE END BEARING | 65BC03J30X | DUTY | CONT | INSUL.CLASS | F | | | | |
| OPP D.E. BEARING | 65BC03J30X | ENCL | TEFC | CODE | G | | | | |
| SF | 1.15 | WK2 | 14.02 | MAG CUR | 17.5 | RPM MAX | 3600 | | |
| CT HZ | 6-60 | VT HZ | 0-60 | CHP HZ | 60-90 | NEMA-NOM-EFF | 95 | | |
| | SUIT FOR 55C AMB AT 1.00 SF | | | | IP55 | | | | |
| SER.NO. | | | | MOTOR WEIGHT | | | | | |

Parts list

| Part number | Description | Quantity |
|--------------|--|----------|
| SA371728 | SA A36-0062-4040 | 1.000 ea |
| RA361431 | RA A36-0062-4040 | 1.000 ea |
| 421948051 | LABEL, MYLAR | 1.000 ea |
| NP2496L | MOTOR LUBE NAMEPLATE | 1.000 ea |
| 000692000JF | CAUTION LABEL TO PREVENT IGNITION | 1.000 ea |
| 000692000VD | LABEL WARNING | 1.000 ea |
| 000692000FX | UL LISTED LOGO LABEL 2.53 X 0.75 X .018 | 1.000 ea |
| 000613006PC | N/P U/L (REL QTY 500) | 1.000 ea |
| NP3140L | INVERTER DUTY, SS, CC, CSA-C US, CSA EEV | 1.000 ea |
| 609158001B | SLGR - 360 | 1.000 ea |
| 603284001S | SLGR - 360 | 1.000 ea |
| 087793060EN | BRKT STD ALT DWG E360 FCXP/POCKET FOR | 1.000 ea |
| 415072001B | CLAMP | 1.000 ea |
| 078559001A | +FANCV - 360 | 1.000 ea |
| 034180012DA | KEY 1X4X1/4X1-1/2 L | 1.000 ea |
| 702676001C | FAN 360 | 1.000 ea |
| 004824015A | GREASE POLYREX EM | 0.540 lb |
| 032018008AK | HHCS 1/4-20X1 PLATED | 4.000 ea |
| 032018018CK | HHCS 3/8-16X2-1/4 PLTD. | 2.000 ea |
| 415096002A | CPLG 1/8 HEX TYPE | 1.000 ea |
| 415045002E | SLGR | 1.000 ea |
| 410700004F | WSHR | 1.000 ea |
| 034017016AB | LCKW 1/2" PLATED | 4.000 ea |
| 035000001G | GREASE RELIEF FITTING, ALEMITE 317400 | 1.000 ea |
| 034017012AB | LCKW 1/4 STD. PLATED 034017012AF | 4.000 ea |
| 032130020DB | HSHCS 1/2-13X2-1/2 PLTD. | 4.000 ea |
| 034017014AB | LCKW 3/8 STD. PLATED | 2.000 ea |
| 034530056AC | P/NIP 1/8X7L GALV-365 | 1.000 ea |
| 402558000DDA | BRDRN | 1.000 ea |
| 034600001AA | BUSH 1/4TO1/8 BLACK | 1.000 ea |
| 034600001AA | BUSH 1/4TO1/8 BLACK | 1.000 ea |

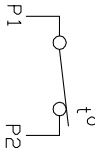
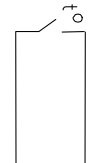
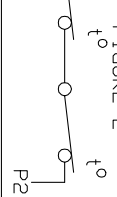
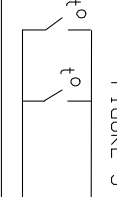
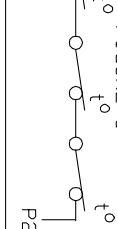
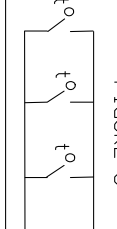
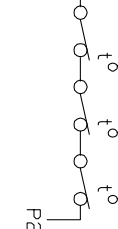
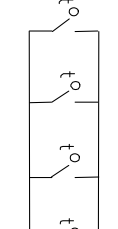
| | | |
|--------------|---|----------|
| 087793060EN | BRKT STD ALT DWG E360 FCXP/POCKET FOR | 1.000 ea |
| 032018018CK | HHCS 3/8-16X2-1/4 PLTD. | 2.000 ea |
| 415045002E | SLGR | 1.000 ea |
| 034017016AB | LCKW 1/2" PLATED | 4.000 ea |
| 034017014AB | LCKW 3/8 STD. PLATED | 2.000 ea |
| 402558000DDA | BRDRN | 1.000 ea |
| 034530020AB | P/NIP 1/8X2-1/2 PLTED | 1.000 ea |
| 415096002A | CPLG 1/8 HEX TYPE | 1.000 ea |
| 032130020DB | HSHCS 1/2-13X2-1/2 PLTD. | 4.000 ea |
| 035000001G | GREASE RELIEF FITTING, ALEMITE 317400 | 1.000 ea |
| 073646000E | C/B 320 WA073646000 KB | 1.000 ea |
| 064069000A | C/BC320/360 X 064069000B | 1.000 ea |
| 418150003A | GREASE FITTING CAP | 1.000 ea |
| 032018014DK | HHCS 1/2-13X1-3/4 PLTD | 4.000 ea |
| 063916001DE | +P/NIP 3X2-5/8 DIMPL-360 | 1.000 ea |
| 034017016AB | LCKW 1/2" PLATED | 4.000 ea |
| 035000001A | ALFTG 1/8" 1610-BL | 1.000 ea |
| 415000103A | T/LUG #14AWG-#4AWG W/HOLE FOR .250 BOLT | 1.000 ea |
| 406099000A | PLUG - FAN COVER 320-440 | 1.000 ea |
| 032018004AM | HHCS 1/4-20X1/2PLTD GREN | 1.000 ea |
| 034036012AB | CKW EXTERNAL TOOTH 1/4" | 1.000 ea |
| 035000001A | ALFTG 1/8" 1610-BL | 1.000 ea |
| 418150003A | GREASE FITTING CAP | 1.000 ea |
| MG1025G29 | WILKOFAS, 789.229, DARK CHARCOAL GRAY | 0.250 ga |
| 033775004EA | DRSCR #6-1/4 304 S.S. | 8.000 ea |
| 034180034HA | KEY 5/8X5/8X4-1/4 L | 1.000 ea |
| 14PA1000 | PACKAGING 314 GROUP COMBINED PRINT | 1.000 ea |
| HW1000A32 | 5/16 FL WASHER WIDE,ID=.344,OD=1.125 | 3.000 ea |
| 032509020C | CARRIAGE BOLT - 360 | 3.000 ea |





CONNECTION DIAGRAM ACCESSORIES

| | |
|---------------------------|-----------------------|
| MOTOR WINDING THERMOSTATS | |
| CONTACTS _____ @ _____ °C | |
| FIGURE NUMBER _____ | |
| CONTACT RATING | |
| VOLTS | CONTINUOUS AMPERES |
| 110-120 | 3.0 |
| 220-240 | 1.5 |
| 440-480 | 0.75 |
| 550-600 | 0.60 |
| | INRUSH AMPERES |
| | 30 |
| | 15 |
| | 7.5 |
| | 6.0 |

| NORMALLY CLOSED | THERMOSTATS | NORMALLY OPEN |
|--|-------------|--|
|  <p>FIGURE 1</p> | |  <p>FIGURE 4</p> |
|  <p>FIGURE 2</p> | |  <p>FIGURE 5</p> |
|  <p>FIGURE 3</p> | |  <p>FIGURE 6</p> |
|  <p>FIGURE 7</p> | |  <p>FIGURE 8</p> |

CUSTOMER _____

CUSTOMER
ORDER NO. _____

S.O. NO. _____

418174-006

418174-006

| | | |
|--------------------------|------------------------------|-------------------|
| REV. DESC: LOADED TO BUS | | |
| REV. LTR: A | VERSION: 01 | TDR: 000000570390 |
| FILE: \RAG\00013\849 | REVISED: 10:16:21 12/07/2010 | BY: RAGDRF |
| MTL: - | | |

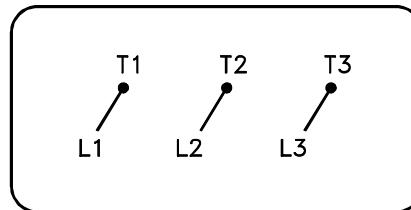
BALDOR

A-C MOTOR CONNECTION ACCESSORIES

SH 1 of 1

416820-036

A-C MOTOR
CONNECTION DIAGRAM
STANDARD 3 LEAD CONNECTED



(N.P. 1575-BA)

| | | |
|--------------------------------------|--------------------------------|-------------------|
| REV. DESC: LOADED TO BUS, C/R 335225 | | |
| REV. LTR: - | VERSION: 00 | TDR: 000000538207 |
| FILE: \MGA\00000\682 | REVISED: 11: 54: 06 04/30/2010 | |
| MTL: - | BY: RAGRA | |

BALDOR

CONN DIAG - STANDARD 3 LEAD
SH 1 of 1

416820-036