

Product Information Packet

April 30, 2019

Data shown is for the current revision model #. Ensure your nameplate model # matches.

Model Number:	5KS215CWL305
Catalog Number:	E514
Instruction Manual:	GEI-M1049
Connection Diagram:	GEM2034E-FIG9
Outline Drawing:	358B6502AA

Accessory Connection Diagrams			
Bearing Thermocouple:	None	Heater:	None
RTD:	None	Thermistor:	None
Thermostat:	3027JE-2A	Winding Thermocouple:	None
Bearing RTD:	None		

Table of Contents	
Specification	01
Performance Characteristics	02
Outline Drawing	03
Connection Drawing(s)	04



Marks:

MODEL NUMBER:	5KS215CWL305	Estimated Weight:	243 Lbs
Outline Drawing:	358B6502AA	Time Rating:	CONT
Connection Diagram:	GEM2034E-FIG9	Enclosure:	TEFC
Instruction Book:	GEI-M1049	Encl Construction:	XP
Design Code:	NA	Ambient Max(°C):	40
Type:	KS	Alt Ambient Max(°C):	55
Frame:	215T	Insulation Class:	F
Phases:	3	NEMA Design:	B
Poles:	6	Nominal Efficiency:	89.5 %
Output Power:	5HP 3.7KW	Guaranteed Efficiency:	87.5 %
RPM:	1172	3/4 Load Efficiency:	89.5 %
Voltage:	230/460	KVA Code:	J
Hertz:	60	Max KVAR:	2.6
Amps - FL:	12.8/6.4	Power Factor:	81.0%
Service Factor:	1.15	Bearing - DE:	6308-ZZ
Alt Service Factor:	1.0	Bearing - ODE:	6308-ZZ

Enclosure is Totally Enclosed Fan-Cooled

Stamped Nameplate Notes:**Additional Information:**

THERMOSTAT FOR: TRIP 145+/-5 DEG C
 THERMOSTAT LEADS: 3 NC TO TERMINATE IN MAIN CB
 ROTATION: CW/ CCW
 CLASS /GAS GROUP:CL I GR C and D, CLASS II GR F and G
 CBOX SIZE:88 CU INCH
 INVERTER DUTY PER NEMA MG1 PART 31
 INVERTER RATED PWM 10:1 VARIABLE TORQUE, 5:1 CONSTANT TORQUE, 1.0 SF
 UL CERTIFICATION SUITABLE FOR INSTALLATION IN –
 - THE UNITED STATES, NIGERIA AND KUWAIT

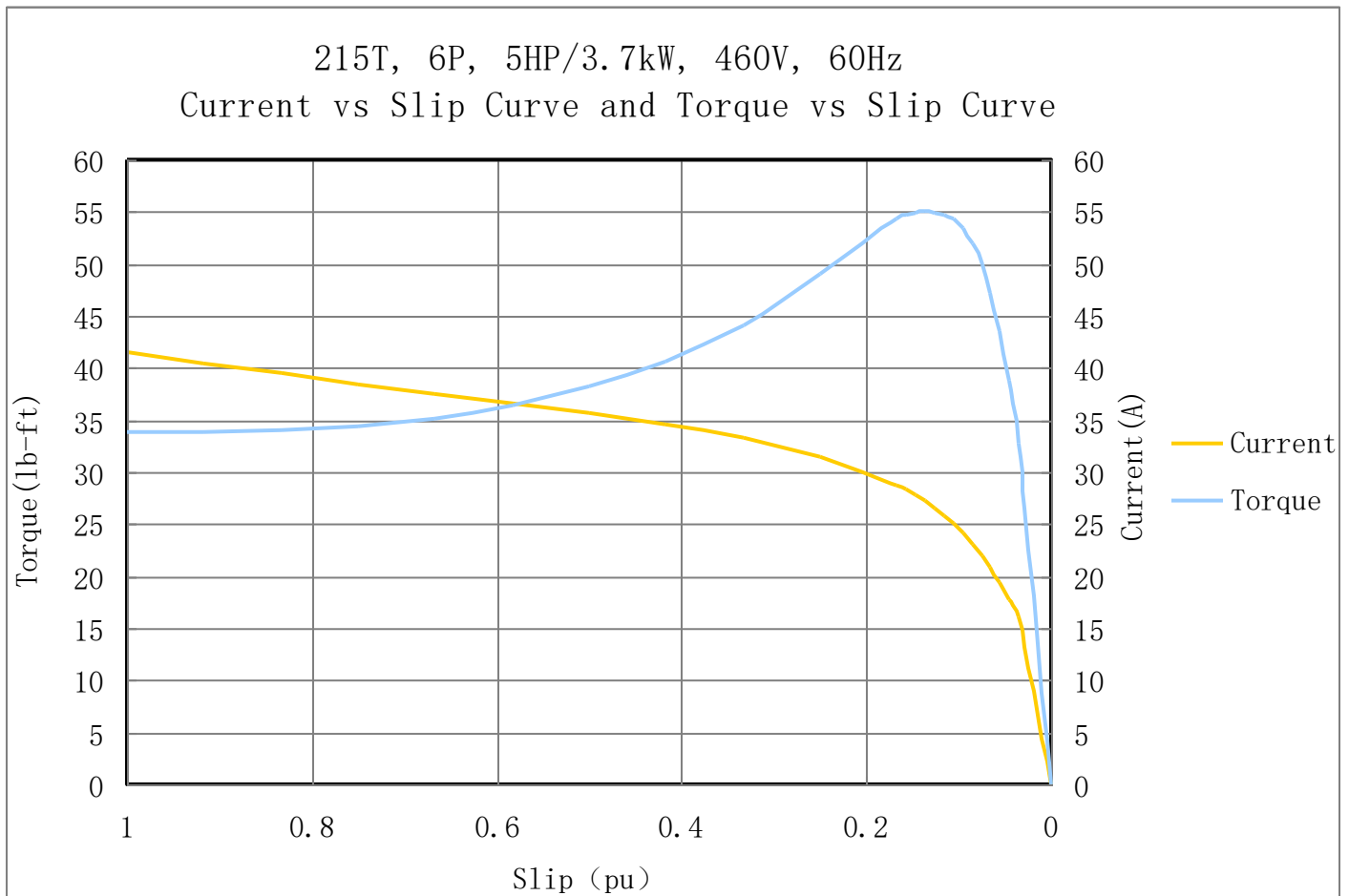
Performance Characteristic:

LOAD %	125.0	115.0	100.0	75.0	50.0	25.0	0.0
% EFF	88.28	88.50	89.50	89.00	87.34	82.10	0
% PF	82.0	81.0	81.0	72.5	60.6	39.0	13.1
AMPS(460V)	7.9	7.3	6.4	5.0	3.8	2.9	1.6

TORQUE(FL) LB-FT 22.14 TORQUE(LR)%FL 153.0 TORQUE(BD)%FL 248.0
 AMPS(LR 460V) 41.5 PF AT START 0.34%

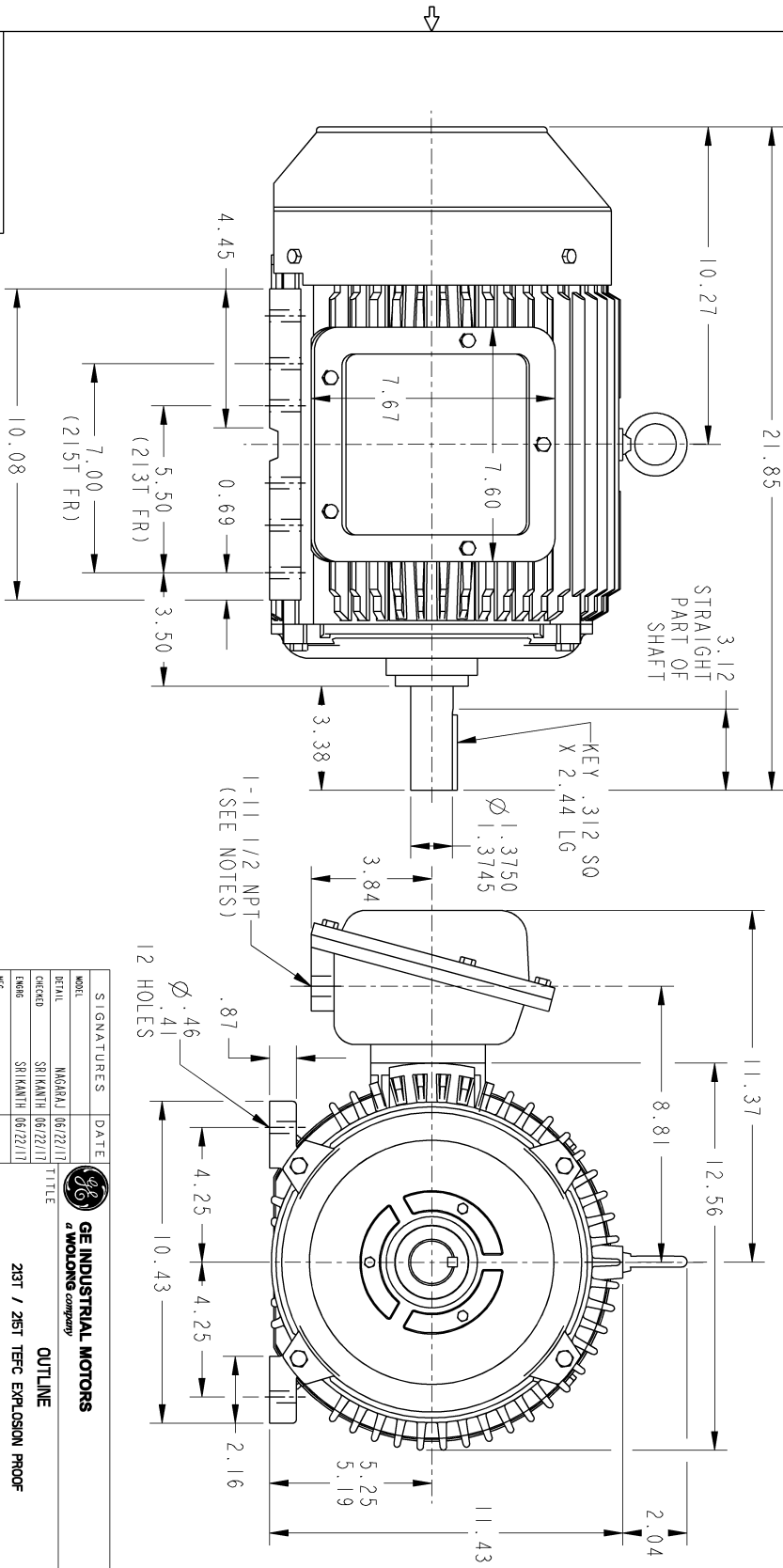
Other Useful Information for Application:

Rotor Inertia: Lb-Ft ² (Kg-m ²):	0.83(0.035)
Max load inertia: Lb-Ft ² (Kg-m ²):	71(2.99)
Load Type:	Square Torque/Speed Characteristic
Voltage:	100%
Number of starts per hour:	2 Cold or 1 Hot
Acceleration Time with maximum inertia (sec):	6.8
Safe stall time (sec): Cold/Hot	100/45

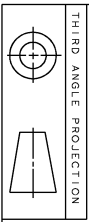


Marks:

- NOTES:
1. CONDUIT BOX IS SUITABLE FOR UP, DOWN OR EITHER SIDE ENTRY.
 2. FL ASSEMBLY AS SHOWN.
 3. ALL DIMENSIONS ARE IN INCHES.



SIZE DRAWING NO.		REV		SHEET	
B		1		1	
358B6502AA 003					
PROPRIETARY INFORMATION					
<small>© Copyright 2018 Wolog Electric America LLC. AM008.115 AFFILIATES. All rights reserved. This document and the information it contains is the property of the Wolog Electric America LLC and/or its affiliates. It has been provided solely for internal use. Copying, reproduction, selling, importing, copying, distribution, or transmission in any form or by any means, electronic or mechanical, including photocopying, recording, or by any information storage and retrieval system, is strictly prohibited except as expressly authorized in writing by the Wolog Electric America LLC.</small>					
REV.	DESCRIPTION	DATE	APPROVED		
1	ISAAC #17-0780	10/24/17	SRI KANTH		
2	ISSAC #18-0869	01/04/19	PRASHANTH		
3	ISAAC #19-0358	04/22/19	SAHID		

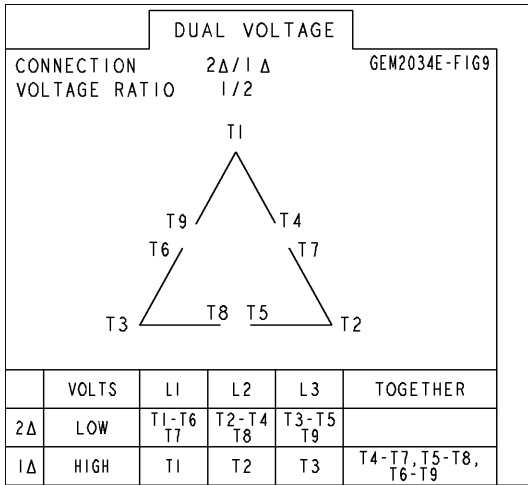


THIRD ANGLE PROJECTION

SIGNATURES	DATE	GE INDUSTRIAL MOTORS <small>a Wolog company</small>	
MODEL	MAGARAJ 06/22/17	OUTLINE 21ST / 21ST TERC EXPLOSION PROOF 88 CU. IN. C/BOX 358B6502AA REV	
DRAWN	SRI KANTH 06/22/17		
CHECKED	SRI KANTH 06/22/17		
ENG	SRI KANTH 06/22/17		
QUALITY	SRI KANTH 06/22/17	SIZE DRAWING	REV
ISSUED	B	SCALE: NTS	REF. No.:
SOLID MODEL: MODEL MAKE		SHEET 1 OF 1	

Marks:

Connection Diagram
GEM2034E-FIG9



Thermostat Connection
3027JE-2A

