

# Product Information Packet

April 30, 2019

Data shown is for the current revision model #. Ensure your nameplate model # matches.

<b>Model Number:</b>	<b>5KS213CWL205</b>
<b>Catalog Number:</b>	<b>E516</b>
<b>Instruction Manual:</b>	GEI-M1049
<b>Connection Diagram:</b>	GEM2034E-FIG9
<b>Outline Drawing:</b>	358B6502AA

Accessory Connection Diagrams			
<b>Bearing Thermocouple:</b>	None	<b>Heater:</b>	None
<b>RTD:</b>	None	<b>Thermistor:</b>	None
<b>Thermostat:</b>	3027JE-2A	<b>Winding Thermocouple:</b>	None
<b>Bearing RTD:</b>	None		

Table of Contents	
Specification	01
Performance Characteristics	02
Outline Drawing	03
Connection Drawing(s)	04

**Marks:**

<b>MODEL NUMBER:</b>	<b>5KS213CWL205</b>	<b>Estimated Weight:</b>	271 Lbs
<b>Outline Drawing:</b>	358B6502AA	<b>Time Rating:</b>	CONT
<b>Connection Diagram:</b>	GEM2034E-FIG9	<b>Enclosure:</b>	TEFC
<b>Instruction Book:</b>	GEI-M1049	<b>Encl Construction:</b>	XP
<b>Design Code:</b>	NA	<b>Ambient Max(°C):</b>	40
<b>Type:</b>	KS	<b>Alt Ambient Max(°C):</b>	55
<b>Frame:</b>	213T	<b>Insulation Class:</b>	F
<b>Phases:</b>	3	<b>NEMA Design:</b>	B
<b>Poles:</b>	4	<b>Nominal Efficiency:</b>	91.7 %
<b>Output Power:</b>	7.5HP 5.5KW	<b>Guaranteed Efficiency:</b>	90.2 %
<b>RPM:</b>	1770	<b>3/4 Load Efficiency:</b>	91.5 %
<b>Voltage:</b>	230/460	<b>KVA Code:</b>	H
<b>Hertz:</b>	60	<b>Max KVAR:</b>	3
<b>Amps - FL:</b>	18.8/9.4	<b>Power Factor:</b>	80.0%
<b>Service Factor:</b>	1.15	<b>Bearing - DE:</b>	6308-ZZ
<b>Alt Service Factor:</b>	1.0	<b>Bearing - ODE:</b>	6308-ZZ

**Enclosure is Totally Enclosed Fan-Cooled**

---

**Stamped Nameplate Notes:****Additional Information:**

THERMOSTAT FOR: TRIP 145+/-5 DEG C  
 THERMOSTAT LEADS: 3 NC TO TERMINATE IN MAIN CB  
 ROTATION: CW/ CCW  
 CLASS /GAS GROUP: CL I GR C and D, CLASS II GR F and G  
 CBOX SIZE: 88 CU INCH  
 INVERTER DUTY PER NEMA MG1 PART 31  
 INVERTER RATED PWM 10:1 VARIABLE TORQUE, 5:1 CONSTANT TORQUE, 1.0 SF  
 UL CERTIFICATION SUITABLE FOR INSTALLATION IN –  
 - THE UNITED STATES, NIGERIA AND KUWAIT

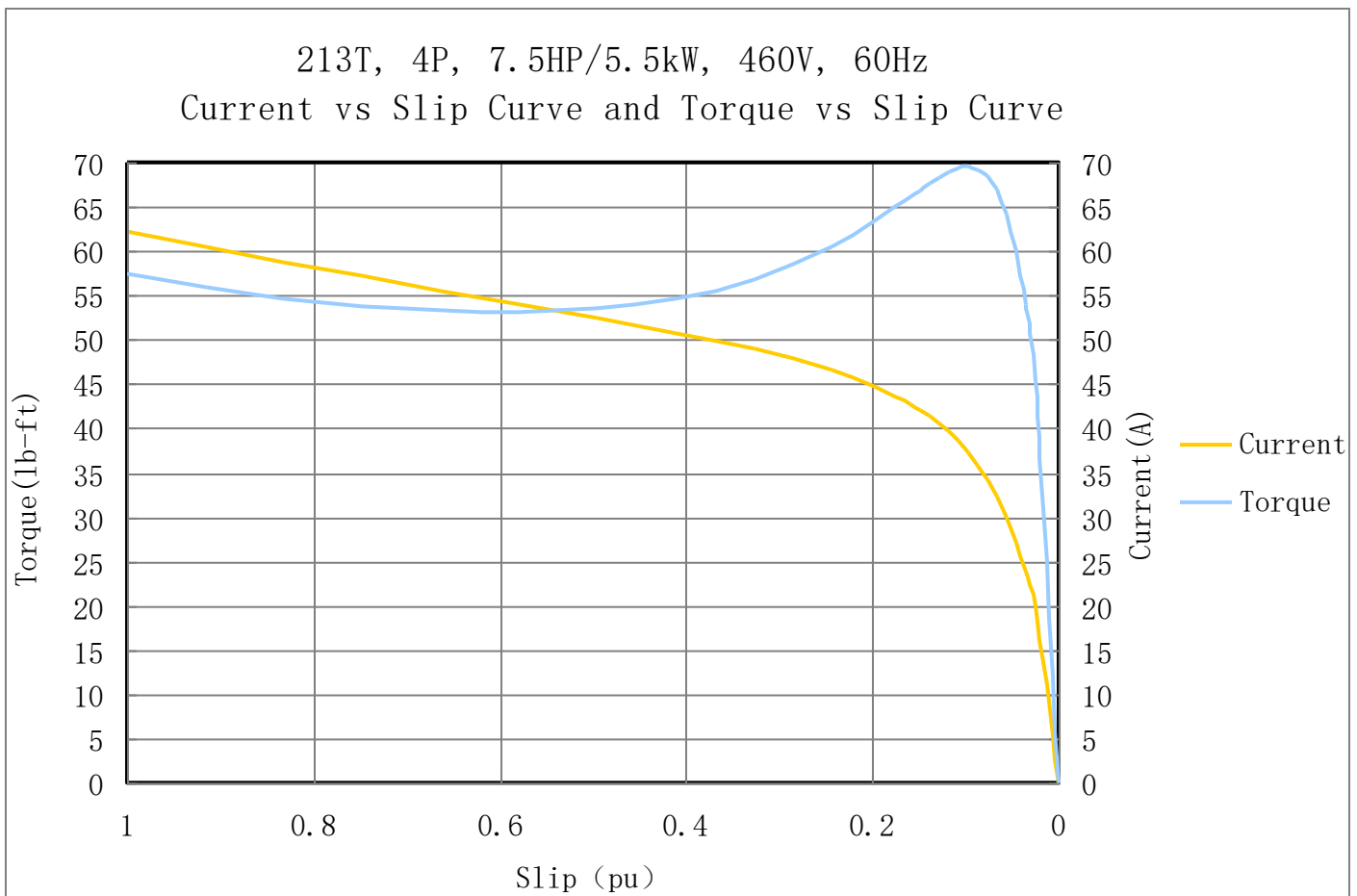
**Performance Characteristic:**

LOAD %	125.0	115.0	100.0	75.0	50.0	25.0	0.0
% EFF	91.39	91.71	91.70	91.00	92.27	89.71	0.00
% PF	88.6	88.2	86.1	83.5	74.6	52.4	17.3
AMPS(460V)	10.7	9.8	8.9	6.7	5.0	3.6	1.6

TORQUE(FL) LB-FT            22.06    TORQUE(LR)%FL            260.0    TORQUE(BD)%FL    314.9  
 AMPS(LR 460V)            62.2    PF AT START            0.38%

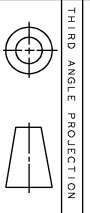
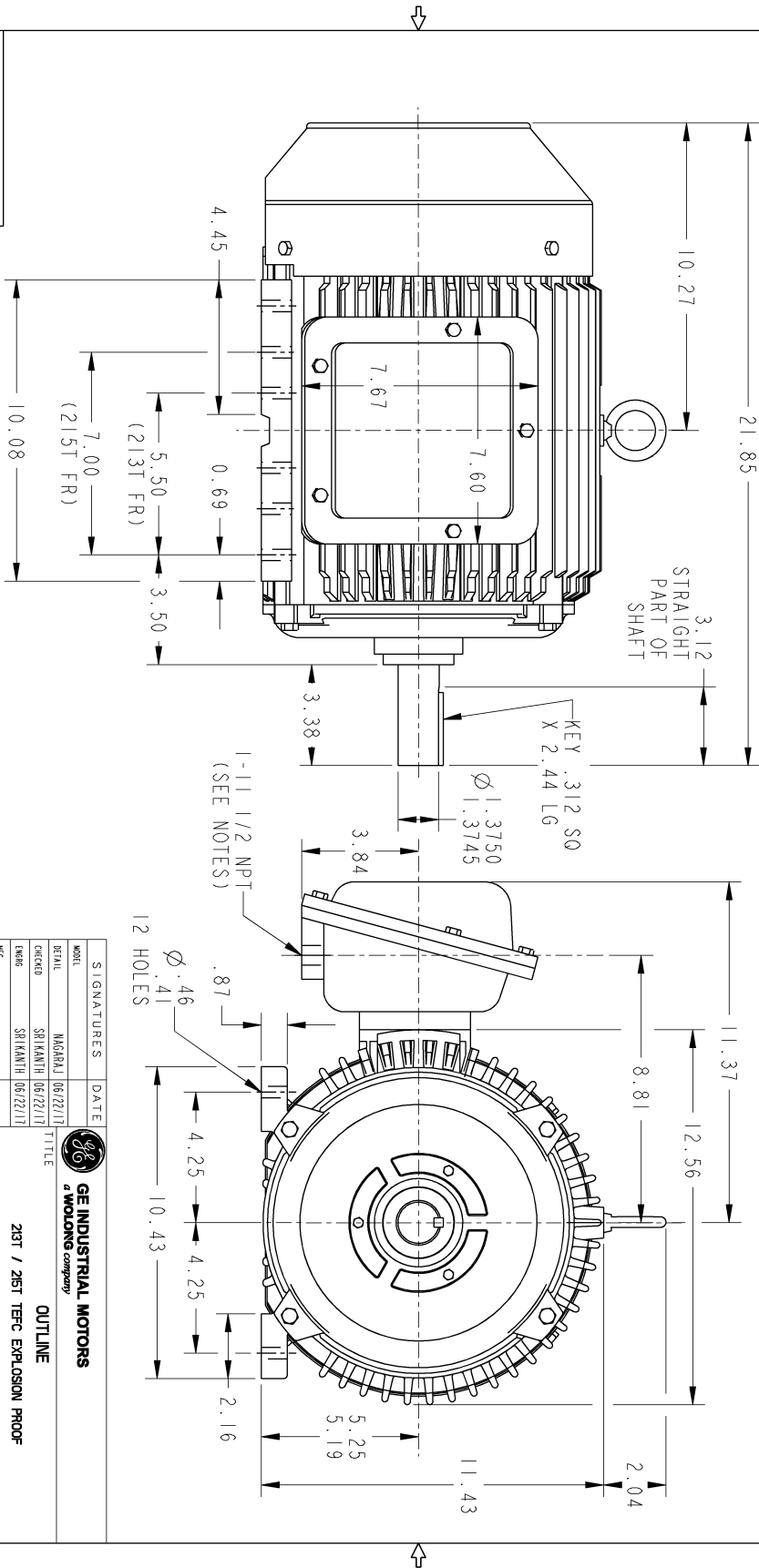
**Other Useful Information for Application:**

Rotor Inertia: Lb-Ft <sup>2</sup> (Kg-m <sup>2</sup> ):	1.42(0.06)
Max load inertia: Lb-Ft <sup>2</sup> (Kg-m <sup>2</sup> ):	104(4.38)
Load Type:	Square Torque/Speed Characteristic
Voltage:	100%
Number of starts per hour:	2 Cold or 1 Hot
Acceleration Time with maximum inertia (sec):	5.9
Safe stall time (sec): Cold/Hot	65/25



Marks:

- NOTES:
1. CONDUIT BOX IS SUITABLE FOR UP, DOWN OR EITHER SIDE ENTRY.
  2. FL ASSEMBLY AS SHOWN.
  3. ALL DIMENSIONS ARE IN INCHES.



PROPRIETARY INFORMATION  
 B SIZE DRAWING NO.

358B6502AA 003 REV SHEET

© COPYRIGHT 2018 Wabong Electric America LLC AND/OR ITS AFFILIATES. All rights reserved. This document and the information it contains is the property of the Wabong Electric America LLC and/or its affiliates. It has been provided solely for internal use only. Reproduction, selling, importing, copying, distribution, or transmission in any form or by any means, electronic or mechanical, including photocopying, recording, or by any information storage and retrieval system, is strictly prohibited except as expressly authorized in writing by the Wabong Electric America LLC.

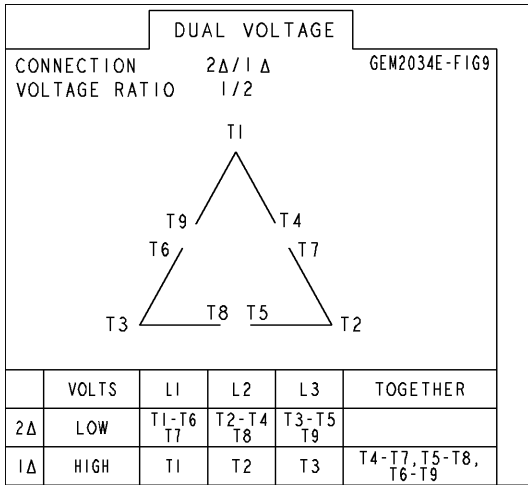
REVOLUTIONS		DATE	APPROVED
REV.	DESCRIPTION		
1	ISAAC #17-0780	10/24/17	SRI KANTH
2	ISSAC #18-0869	01/04/19	PRASHANTH
3	ISAAC #19-0358	04/22/19	SAHID

SIGNATURES	DATE	
MODEL		
DETAIL		
CHECKED		
ENGR		
QUALITY		
ISSUED		
SOLID MODEL		

**GE INDUSTRIAL MOTORS**  
*a Wabong company*  
**OUTLINE**  
 213T / 215T TFFC EXPLOSION PROOF  
 88 CU. IN. C/BOX  
**358B6502AA** REV  
 SCALE: NTS REF. No.: SHEET 1 OF 1

**Marks:**

**Connection Diagram**  
**GEM2034E-FIG9**



**Thermostat Connection**  
**3027JE-2A**

