

# Product Information Packet

April 30, 2019

Data shown is for the current revision model #. Ensure your nameplate model # matches.

<b>Model Number:</b>	<b>5KS215CWL205</b>
<b>Catalog Number:</b>	<b>E519</b>
<b>Instruction Manual:</b>	GEI-M1049
<b>Connection Diagram:</b>	GEM2034E-FIG9
<b>Outline Drawing:</b>	358B6502AA

Accessory Connection Diagrams			
<b>Bearing Thermocouple:</b>	None	<b>Heater:</b>	None
<b>RTD:</b>	None	<b>Thermistor:</b>	None
<b>Thermostat:</b>	3027JE-2A	<b>Winding Thermocouple:</b>	None
<b>Bearing RTD:</b>	None		

Table of Contents	
Specification	01
Performance Characteristics	02
Outline Drawing	03
Connection Drawing(s)	04

Marks:

<b>MODEL NUMBER:</b>	<b>5KS215CWL205</b>	<b>Estimated Weight:</b>	273 Lbs
<b>Outline Drawing:</b>	358B6502AA	<b>Time Rating:</b>	CONT
<b>Connection Diagram:</b>	GEM2034E-FIG9	<b>Enclosure:</b>	TEFC
<b>Instruction Book:</b>	GEI-M1049	<b>Encl Construction:</b>	XP
<b>Design Code:</b>	NA	<b>Ambient Max(°C):</b>	40
<b>Type:</b>	KS	<b>Alt Ambient Max(°C):</b>	55
<b>Frame:</b>	215T	<b>Insulation Class:</b>	F
<b>Phases:</b>	3	<b>NEMA Design:</b>	B
<b>Poles:</b>	4	<b>Nominal Efficiency:</b>	91.7 %
<b>Output Power:</b>	10HP 7.4KW	<b>Guaranteed Efficiency:</b>	90.2 %
<b>RPM:</b>	1770	<b>3/4 Load Efficiency:</b>	92.0 %
<b>Voltage:</b>	230/460	<b>KVA Code:</b>	H
<b>Hertz:</b>	60	<b>Max KVAR:</b>	3.8
<b>Amps - FL:</b>	24.4/12.2	<b>Power Factor:</b>	84.0%
<b>Service Factor:</b>	1.15	<b>Bearing - DE:</b>	6308-ZZ
<b>Alt Service Factor:</b>	1.0	<b>Bearing - ODE:</b>	6308-ZZ

Enclosure is Totally Enclosed Fan-Cooled

---

Stamped Nameplate Notes:Additional Information:

THERMOSTAT FOR: TRIP 145+/-5 DEG C  
 THERMOSTAT LEADS: 3 NC TO TERMINATE IN MAIN CB  
 ROTATION: CW/ CCW  
 CLASS /GAS GROUP: CL I GR C and D, CLASS II GR F and G  
 CBOX SIZE: 88 CU INCH  
 INVERTER DUTY PER NEMA MG1 PART 31  
 INVERTER RATED PWM 10:1 VARIABLE TORQUE, 5:1 CONSTANT TORQUE, 1.0 SF  
 UL CERTIFICATION SUITABLE FOR INSTALLATION IN –  
 - THE UNITED STATES, NIGERIA AND KUWAIT

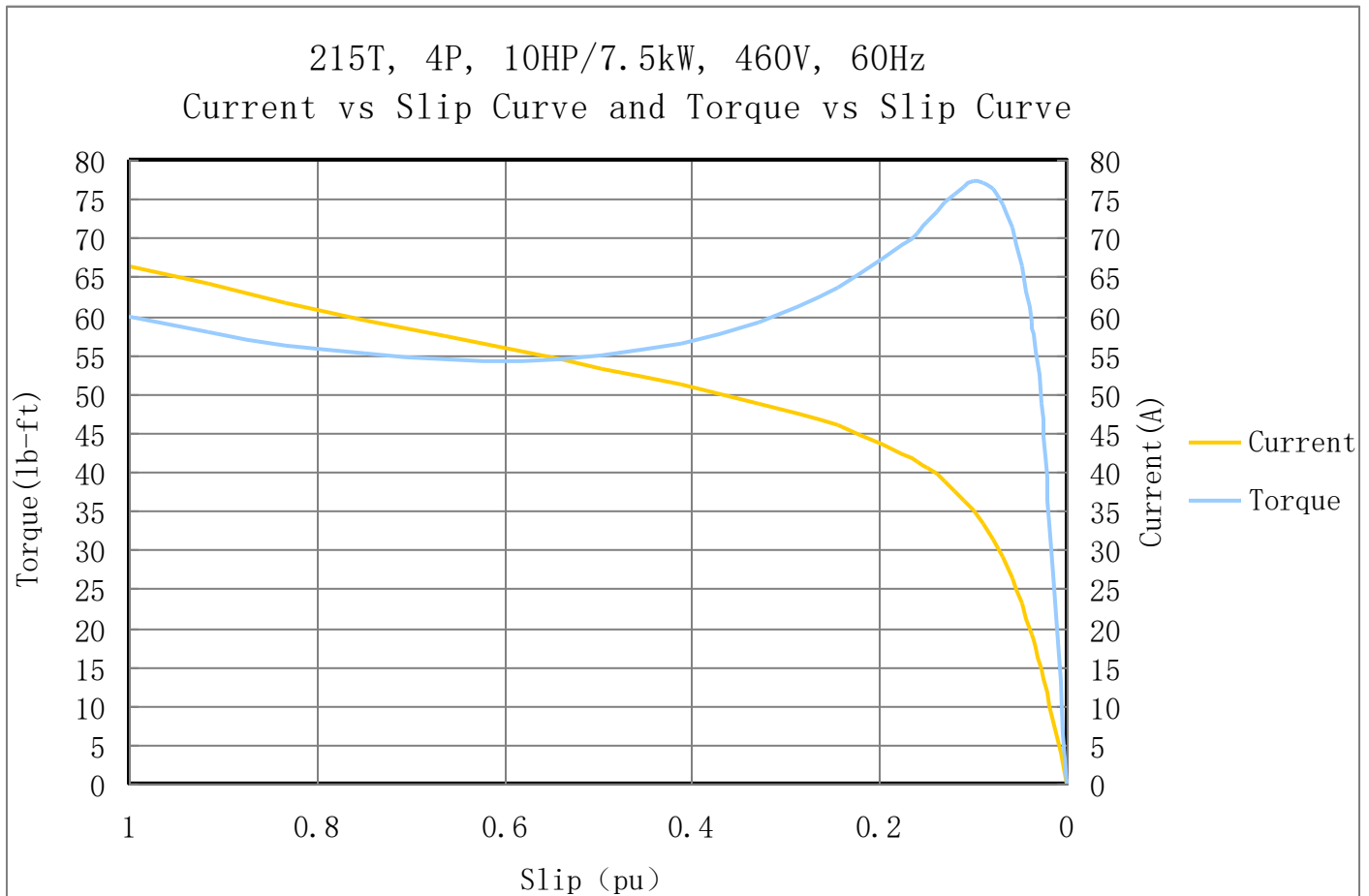
**Performance Characteristic:**

LOAD %	125.0	115.0	100.0	75.0	50.0	25.0	0.0
% EFF	90.42	90.72	91.7	92.0	90.64	87.08	0
% PF	86.6	86.4	84.0	82.6	74.6	53.5	18.4
AMPS(460V)	15.1	13.8	12.2	9.4	6.9	5.0	2.2

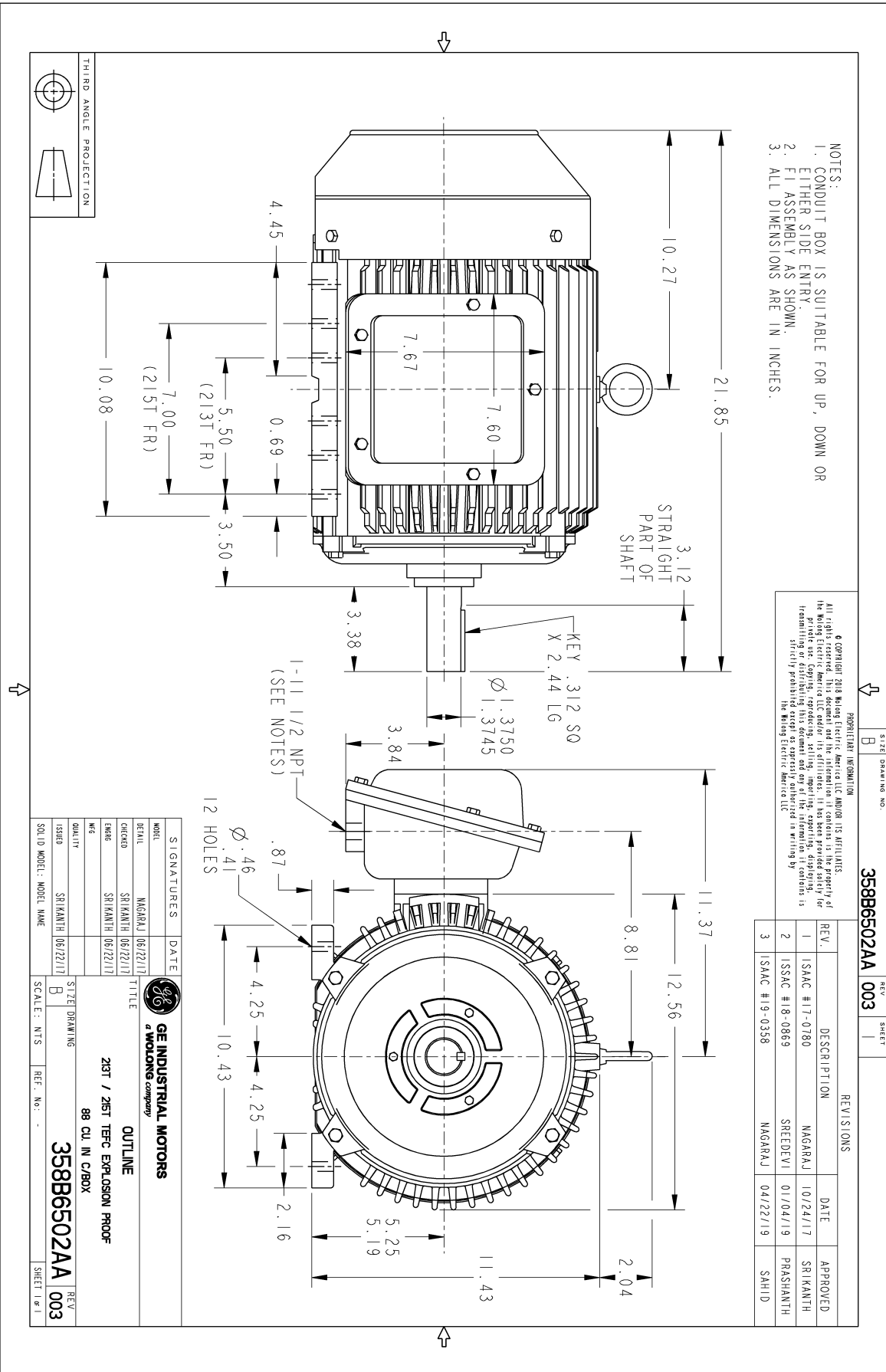
TORQUE(FL) LB-FT 29.82 TORQUE(LR)%FL 201.0 TORQUE(BD)%FL 259.0  
 AMPS(LR 460V) 66.4 PF AT START 0.39%

**Other Useful Information for Application:**

Rotor Inertia: Lb-Ft <sup>2</sup> (Kg-m <sup>2</sup> ):	1.73(0.073)
Max load inertia: Lb-Ft <sup>2</sup> (Kg-m <sup>2</sup> ):	51(2.15)
Load Type:	Square Torque/Speed Characteristic
Voltage:	100%
Number of starts per hour:	2 Cold or 1 Hot
Acceleration Time with maximum inertia (sec):	4.2
Safe stall time (sec): Cold/Hot	60/20

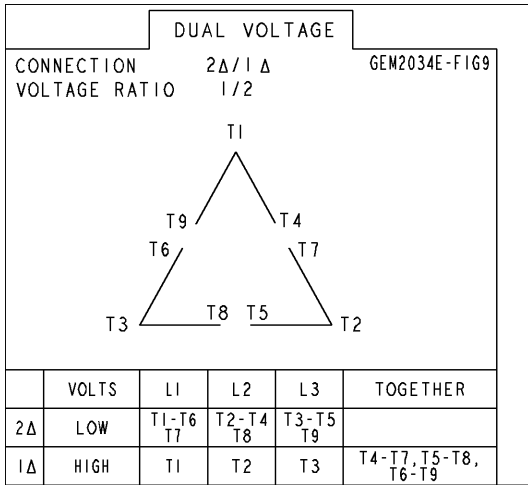


Marks:



**Marks:**

**Connection Diagram**  
**GEM2034E-FIG9**



**Thermostat Connection**  
**3027JE-2A**

