

Product Information Packet

April 30, 2019

Data shown is for the current revision model #. Ensure your nameplate model # matches.

Model Number:	5KS284CWL115
Catalog Number:	E527
Instruction Manual:	GEI-M1049
Connection Diagram:	GEM2034E-FIG9
Outline Drawing:	358B6504AB

Accessory Connection Diagrams			
Bearing Thermocouple:	None	Heater:	None
RTD:	None	Thermistor:	None
Thermostat:	3027JE-2A	Winding Thermocouple:	None
Bearing RTD:	None		

Table of Contents	
Specification	01
Performance Characteristics	02
Outline Drawing	03
Connection Drawing(s)	04

Marks:

MODEL NUMBER:	5KS284CWL115	Estimated Weight:	539 Lbs
Outline Drawing:	358B6504AB	Time Rating:	CONT
Connection Diagram:	GEM2034E-FIG9	Enclosure:	TEFC
Instruction Book:	GEI-M1049	Encl Construction:	XP
Design Code:	NA	Ambient Max(°C):	40
Type:	KS	Alt Ambient Max(°C):	55
Frame:	284TS	Insulation Class:	F
Phases:	3	NEMA Design:	B
Poles:	2	Nominal Efficiency:	91.7 %
Output Power:	25HP 18.5KW	Guaranteed Efficiency:	90.2 %
RPM:	3555	3/4 Load Efficiency:	91.9 %
Voltage:	230/460	KVA Code:	G
Hertz:	60	Max KVAR:	6.2
Amps - FL:	57.3/28.6	Power Factor:	88.4%
Service Factor:	1.15	Bearing - DE:	6310-C3
Alt Service Factor:	1.0	Bearing - ODE:	6310-C3

Enclosure is Totally Enclosed Fan-Cooled

Stamped Nameplate Notes:Additional Information:

THERMOSTAT FOR: TRIP 145+/-5 DEG C
 THERMOSTAT LEADS: 3 NC TO TERMINATE IN MAIN CB
 ROTATION:CCW VIEWED FROM ODE
 CLASS /GAS GROUP:CL I GR C and D, CLASS II GR F and G
 CBOX SIZE:291 CU INCH
 INVERTER DUTY PER NEMA MG1 PART 31
 INVERTER RATED PWM 10:1 VARIABLE TORQUE, 5:1 CONSTANT TORQUE, 1.0 SF
 UL CERTIFICATION SUITABLE FOR INSTALLATION IN –
 - THE UNITED STATES, NIGERIA AND KUWAIT

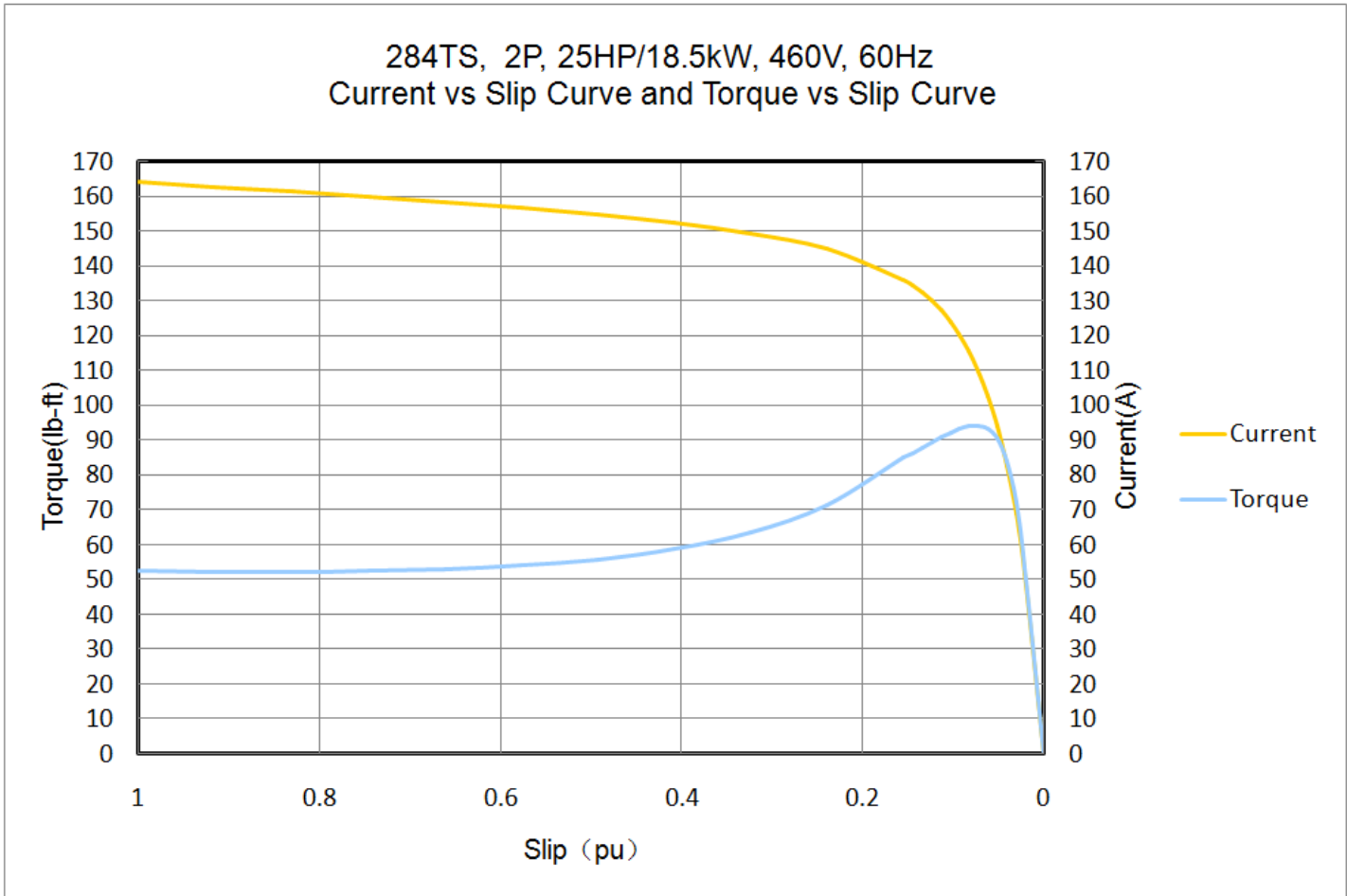
Performance Characteristic:

LOAD %	125.0	115.0	100.0	75.0	50.0	25.0	0.0
% EFF	91.63	91.87	91.70	91.90	92.37	90.70	0.00
% PF	92.1	92.2	88.4	87.0	85.7	68.6	25.0
AMPS(460V)	34.38	31.52	28.60	20.79	14.64	9.36	3.55

TORQUE(FL) LB-FT 36.9 TORQUE(LR)%FL 143.0 TORQUE(BD)%FL 255.0
 AMPS(LR 460V) 164.3 PF AT START 0.28%

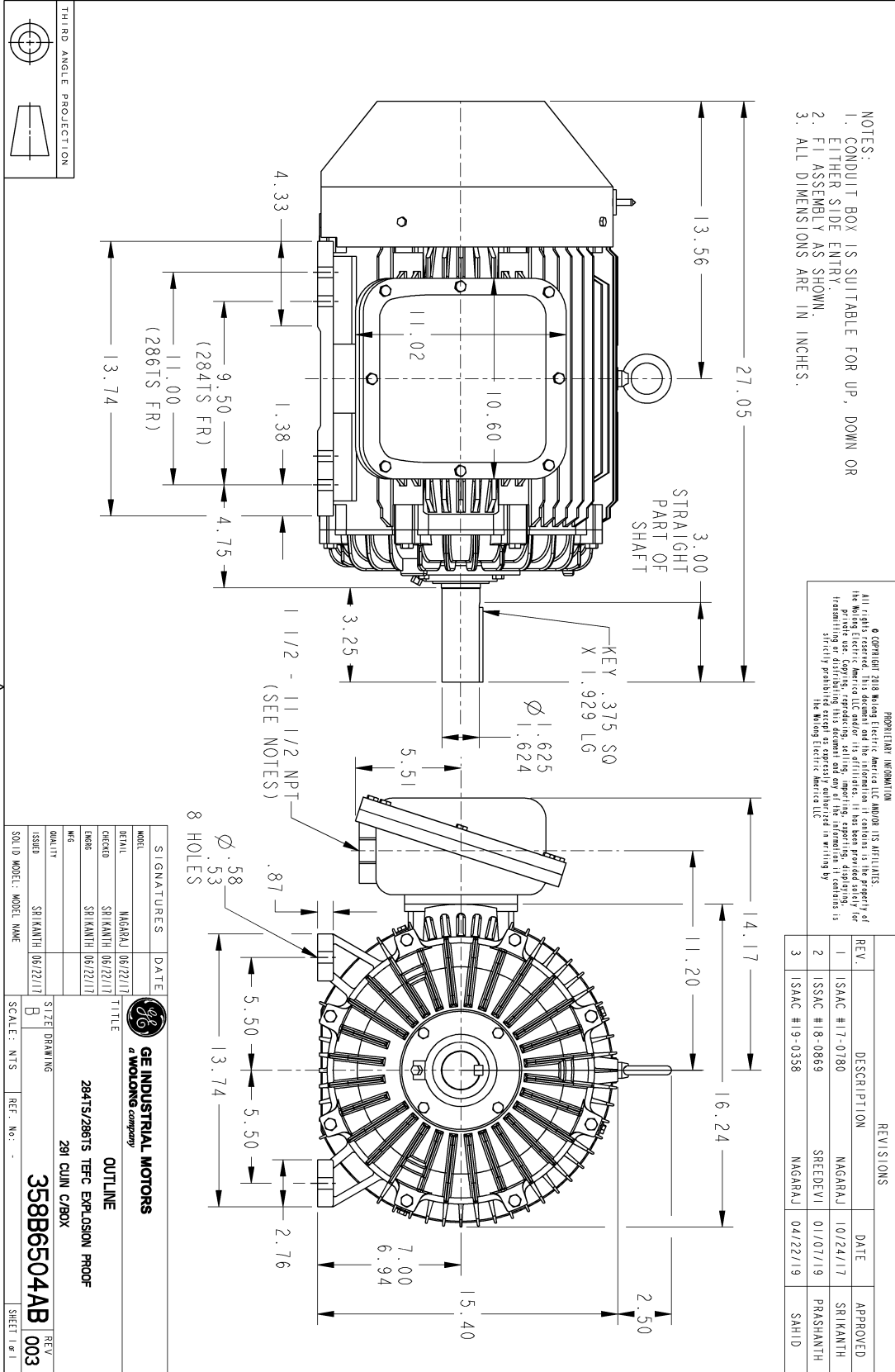
Other Useful Information for Application:

Rotor Inertia: Lb-Ft ² (Kg-m ²):	1.95(0.082)
Max load inertia: Lb-Ft ² (Kg-m ²):	26(1.1)
Load Type:	Square Torque/Speed Characteristic
Voltage:	100%
Number of starts per hour:	2 Cold or 1 Hot
Acceleration Time with maximum inertia (sec):	4.5
Safe stall time (sec): Cold/Hot	75/35



Marks:

- NOTES:
1. CONDUIT BOX IS SUITABLE FOR UP, DOWN OR EITHER SIDE ENTRY.
 2. FI ASSEMBLY AS SHOWN.
 3. ALL DIMENSIONS ARE IN INCHES.



PROPRIETARY INFORMATION

© COPYRIGHT 2018 Waring Electric America LLC AND/OR ITS AFFILIATES. All rights reserved. This document and the information it contains is the property of Waring Electric America LLC and/or its affiliates. It has been provided solely for the personal use, copying, reproducing, selling, importing, exporting, distribution, transmission, or otherwise making available to the public. Any other use, in whole or in part, is strictly prohibited except as expressly authorized in writing by the Waring Electric America LLC.

REV.	DESCRIPTION	DATE	APPROVED
1	ISAAC #17-0780	10/24/17	SRIKANTH
2	ISSAC #18-0869	01/07/19	PRASHANTH
3	ISAAC #19-0358	04/22/19	SAHID

SIGNATURES	DATE
MODEL	06/22/17
DESIGN	06/22/17
CHECKED	06/22/17
ENG	06/22/17
QUALITY	06/22/17
ISSUED	06/22/17
SOLID MODEL	

GE INDUSTRIAL MOTORS
a WOLONG company

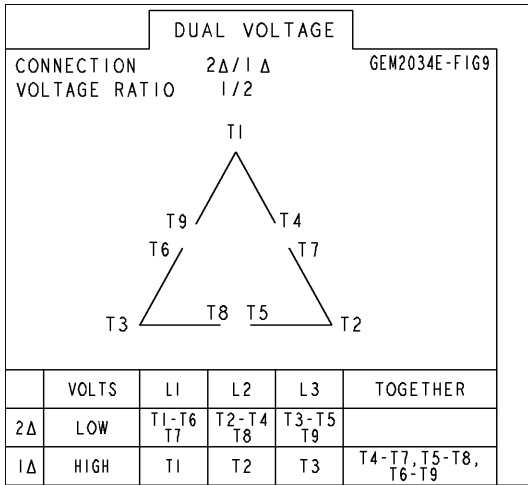
TITLE
284TS/286TS TFFC EXPLOSION PROOF
291 CUIN C/BOX

358B6504AB 003

SCALE: NTS REF. NO. SHEET 1 OF 1

Marks:

Connection Diagram
GEM2034E-FIG9



Thermostat Connection
3027JE-2A

