

# Product Information Packet

December 22, 2017

Data shown is for the current revision model #. Ensure your nameplate model # matches.

<b>Model Number:</b>	<b>5KS286CWL205</b>
<b>Catalog Number:</b>	<b>E531</b>
<b>Instruction Manual:</b>	GEI-M1049
<b>Connection Diagram:</b>	GEM2034E-FIG9
<b>Outline Drawing:</b>	358B6504AA

Accessory Connection Diagrams			
<b>Bearing Thermocouple:</b>	None	<b>Heater:</b>	None
<b>RTD:</b>	None	<b>Thermistor:</b>	None
<b>Thermostat:</b>	3027JE-2A	<b>Winding Thermocouple:</b>	None
<b>Bearing RTD:</b>	None		

Table of Contents	
Specification	01
Performance Characteristics	02
Outline Drawing	03
Connection Drawing(s)	04

**Marks:**

<b>MODEL NUMBER:</b>	<b>5KS286CWL205</b>	<b>Estimated Weight:</b>	585 Lbs
<b>Outline Drawing:</b>	358B6504AA	<b>Time Rating:</b>	CONT
<b>Connection Diagram:</b>	GEM2034E-FIG9	<b>Enclosure:</b>	TEFC
<b>Instruction Book:</b>	GEI-M1049	<b>Encl Construction:</b>	XP
<b>Design Code:</b>	NA	<b>Ambient Max(°C):</b>	40
<b>Type:</b>	KS	<b>Alt Ambient Max(°C):</b>	55
<b>Frame:</b>	286T	<b>Insulation Class:</b>	F
<b>Phases:</b>	3	<b>NEMA Design:</b>	B
<b>Poles:</b>	4	<b>Nominal Efficiency:</b>	93.6 %
<b>Output Power:</b>	30HP 22kW	<b>Guaranteed Efficiency:</b>	92.4 %
<b>RPM:</b>	1774	<b>3/4 Load Efficiency:</b>	93.9 %
<b>Voltage:</b>	230/460	<b>KVA Code:</b>	G
<b>Hertz:</b>	60	<b>Max KVAR:</b>	8
<b>Amps - FL:</b>	67.6/33.8	<b>Power Factor:</b>	87.4%
<b>Service Factor:</b>	1.15	<b>Bearing - DE:</b>	6310-C3
<b>Alt Service Factor:</b>	1.0	<b>Bearing - ODE:</b>	6310-C3

**Enclosure is Totally Enclosed Fan-Cooled**

---

**Stamped Nameplate Notes:****Additional Information:**

THERMOSTAT FOR: TRIP 145+/-5 DEG C  
 THERMOSTAT LEADS: 3 NC TO TERMINATE IN MAIN CB  
 ROTATION:CCW VIEWED FROM ODE  
 CLASS /GAS GROUP:CL I GR C and D, CLASS II GR F and G  
 CBOX SIZE:291 CU INCH  
 INVERTER DUTY PER NEMA MG1 PART 31  
 INVERTER RATED PWM 10:1 VARIABLE TORQUE, 5:1 CONSTANT TORQUE, 1.0 SF  
 UL CERTIFICATION SUITABLE FOR INSTALLATION IN –  
 - THE UNITED STATES, NIGERIA AND KUWAIT



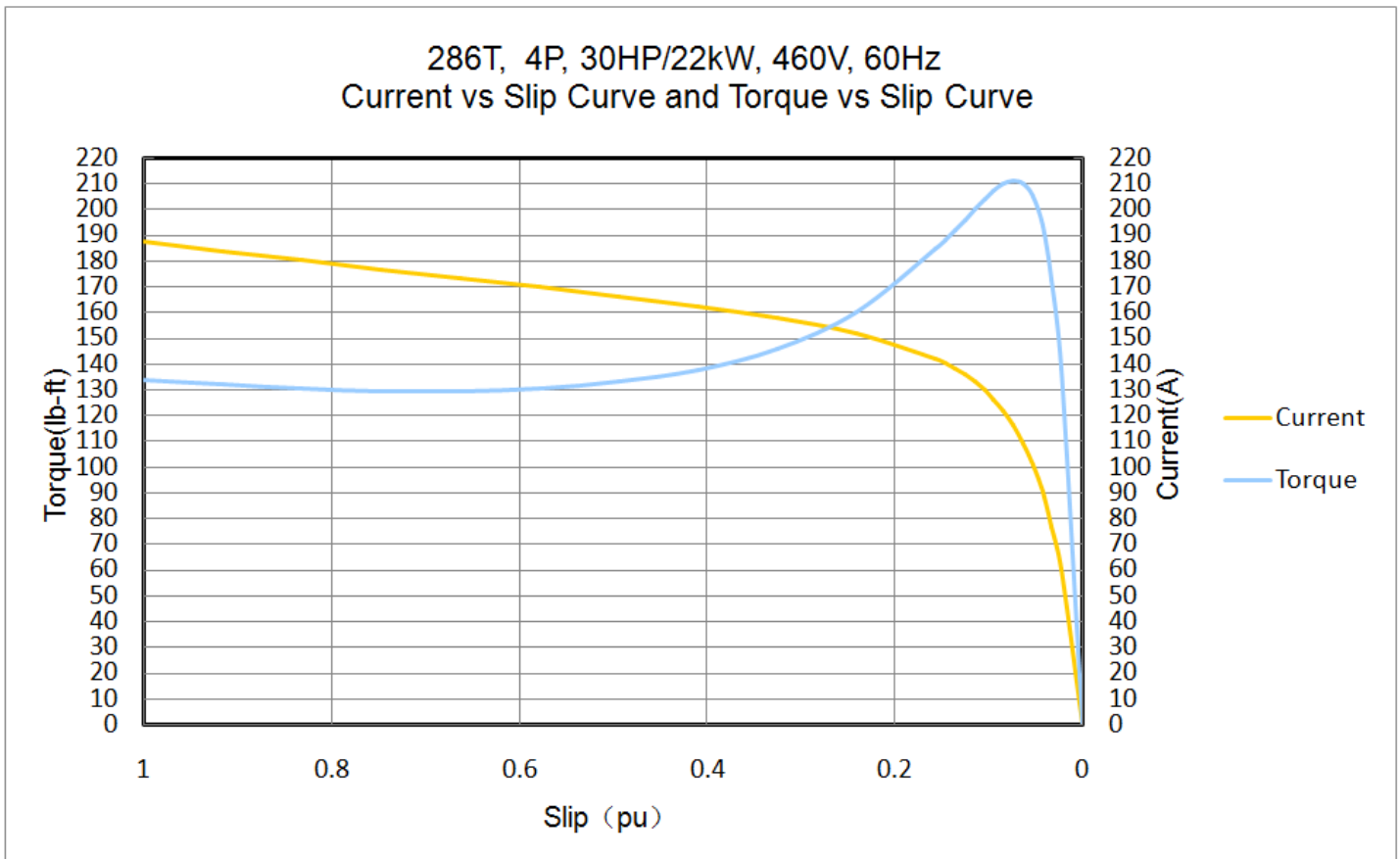
**Performance Characteristic:**

LOAD %	125.0	115.0	100.0	75.0	50.0	25.0	0.0
% EFF	93.21	93.51	93.60	93.70	94.28	92.74	0.00
% PF	90.2	90.4	87.4	85.2	83.7	65.7	23.3
AMPS(460V)	41.05	37.59	33.80	24.77	17.50	11.35	4.42

TORQUE(FL) LB-FT      87.53    TORQUE(LR)%FL      153.0    TORQUE(BD)%FL      241.0  
 AMPS(LR 460V)      187.3    PF AT START      0.32%

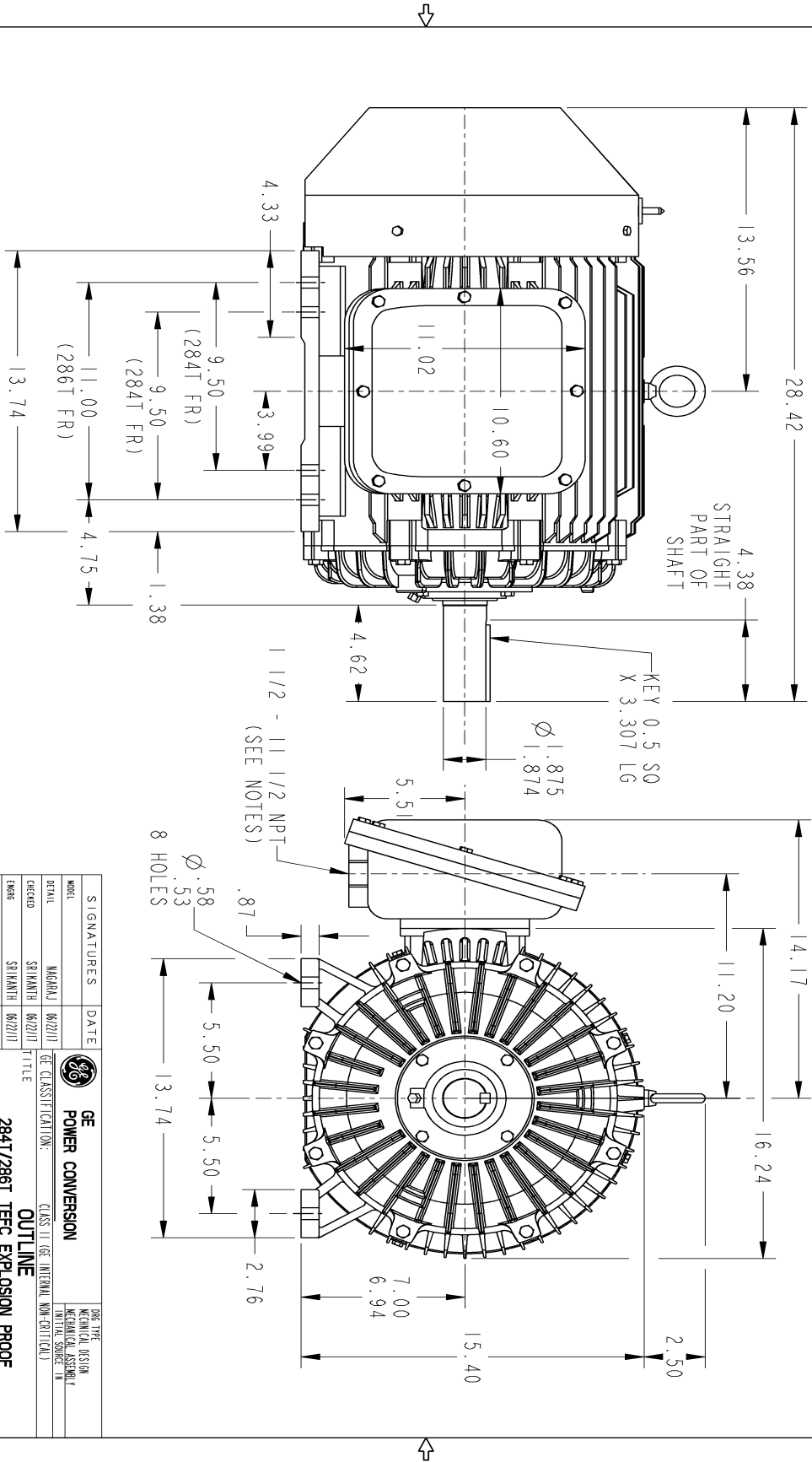
**Other Useful Information for Application:**

Rotor Inertia: Lb-Ft <sup>2</sup> (Kg-m <sup>2</sup> ):	9.49(0.4)
Max load inertia: Lb-Ft <sup>2</sup> (Kg-m <sup>2</sup> ):	144(6.1)
Load Type:	Square Torque/Speed Characteristic
Voltage:	100%
Number of starts per hour:	2 Cold or 1 Hot
Acceleration Time with maximum inertia (sec):	5.3
Safe stall time (sec): Cold/Hot	70/30



Marks:

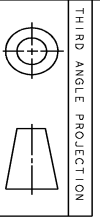
- NOTES:
1. CONDUIT BOX IS SUITABLE FOR UP, DOWN OR EITHER SIDE ENTRY.
  2. FL ASSEMBLY AS SHOWN.
  3. ALL DIMENSIONS ARE IN INCHES.



© COPYRIGHT 2016 GENERAL ELECTRIC COMPANY AND/OR ITS AFFILIATES. All rights reserved. This document and the information it contains is the property of General Electric Company and/or its affiliates. It has been provided solely for the use of the recipient and is not to be distributed, copied, or otherwise used for any purpose other than that for which it was intended. The information in this document is strictly prohibited except as expressly authorized in writing by the General Electric Company and/or its affiliates.

SIZE DRAWING NO. **358B6504AA 001**

REV.	DESCRIPTION	DATE	APPROVED
1	ISAAC #17-0780	10/24/17	SRIKANTH



SOLID MODEL: MODEL NAME

SIGNATURES	DATE	DESIGN
MAGARAJ	06/22/17	MECHANICAL DESIGN
SRIKANTH	06/22/17	MECHANICAL ASSEMBLY
SRIKANTH	06/22/17	MECHANICAL CHECKER
SRIKANTH	06/22/17	MECHANICAL DESIGN

GE POWER CONVERSION

CLASS. II. (GE INTERNAL NON-CRITICAL)

DETAIL TITLE: **284T/286T TERC EXPLOSION PROOF**

ENG: SRIKANTH

ISSUED: SRIKANTH

SCALE: NTS REF. No.:

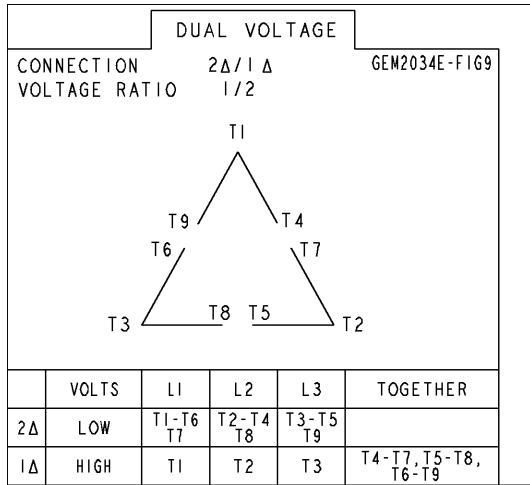
358B6504AA 001

NO. LICENSE REQUIRED

SHEET 1 of 1

Marks:

**Connection Diagram**  
**GEM2034E-FIG9**



**Thermostat Connection**  
**3027JE-2A**

