

# Product Information Packet

April 30, 2019

Data shown is for the current revision model #. Ensure your nameplate model # matches.

<b>Model Number:</b>	<b>5KS365CWL205</b>
<b>Catalog Number:</b>	<b>E543</b>
<b>Instruction Manual:</b>	GEI-M1049
<b>Connection Diagram:</b>	GEM2034E-FIG9
<b>Outline Drawing:</b>	358B6506AB

Accessory Connection Diagrams			
<b>Bearing Thermocouple:</b>	None	<b>Heater:</b>	None
<b>RTD:</b>	None	<b>Thermistor:</b>	None
<b>Thermostat:</b>	3027JE-2A	<b>Winding Thermocouple:</b>	None
<b>Bearing RTD:</b>	None		

Table of Contents	
Specification	01
Performance Characteristics	02
Outline Drawing	03
Connection Drawing(s)	04

Marks:

<b>MODEL NUMBER:</b>	<b>5KS365CWL205</b>	<b>Estimated Weight:</b>	1089 Lbs
<b>Outline Drawing:</b>	358B6506AB	<b>Time Rating:</b>	CONT
<b>Connection Diagram:</b>	GEM2034E-FIG9	<b>Enclosure:</b>	TEFC
<b>Instruction Book:</b>	GEI-M1049	<b>Encl Construction:</b>	XP
<b>Design Code:</b>	NA	<b>Ambient Max(°C):</b>	40
<b>Type:</b>	KS	<b>Alt Ambient Max(°C):</b>	55
<b>Frame:</b>	365T	<b>Insulation Class:</b>	F
<b>Phases:</b>	3	<b>NEMA Design:</b>	B
<b>Poles:</b>	4	<b>Nominal Efficiency:</b>	95.4 %
<b>Output Power:</b>	75HP 55.5KW	<b>Guaranteed Efficiency:</b>	94.5 %
<b>RPM:</b>	1785	<b>3/4 Load Efficiency:</b>	95.3 %
<b>Voltage:</b>	230/460	<b>KVA Code:</b>	G
<b>Hertz:</b>	60	<b>Max KVAR:</b>	23.8
<b>Amps - FL:</b>	171.6/85.8	<b>Power Factor:</b>	84.3%
<b>Service Factor:</b>	1.15	<b>Bearing - DE:</b>	6313-C3
<b>Alt Service Factor:</b>	1.0	<b>Bearing - ODE:</b>	6313-C3

Enclosure is Totally Enclosed Fan-Cooled

---

Stamped Nameplate Notes:Additional Information:

THERMOSTAT FOR: TRIP 145+/-5 DEG C  
 THERMOSTAT LEADS: 3 NC TO TERMINATE IN MAIN CB  
 ROTATION:CCW VIEWED FROM ODE  
 CLASS /GAS GROUP:CL I GR C and D, CLASS II GR F and G  
 CBOX SIZE:481 CU INCH  
 INVERTER DUTY PER NEMA MG1 PART 31  
 INVERTER RATED PWM 10:1 VARIABLE TORQUE, 5:1 CONSTANT TORQUE, 1.0 SF  
 UL CERTIFICATION SUITABLE FOR INSTALLATION IN –  
 - THE UNITED STATES, NIGERIA AND KUWAIT

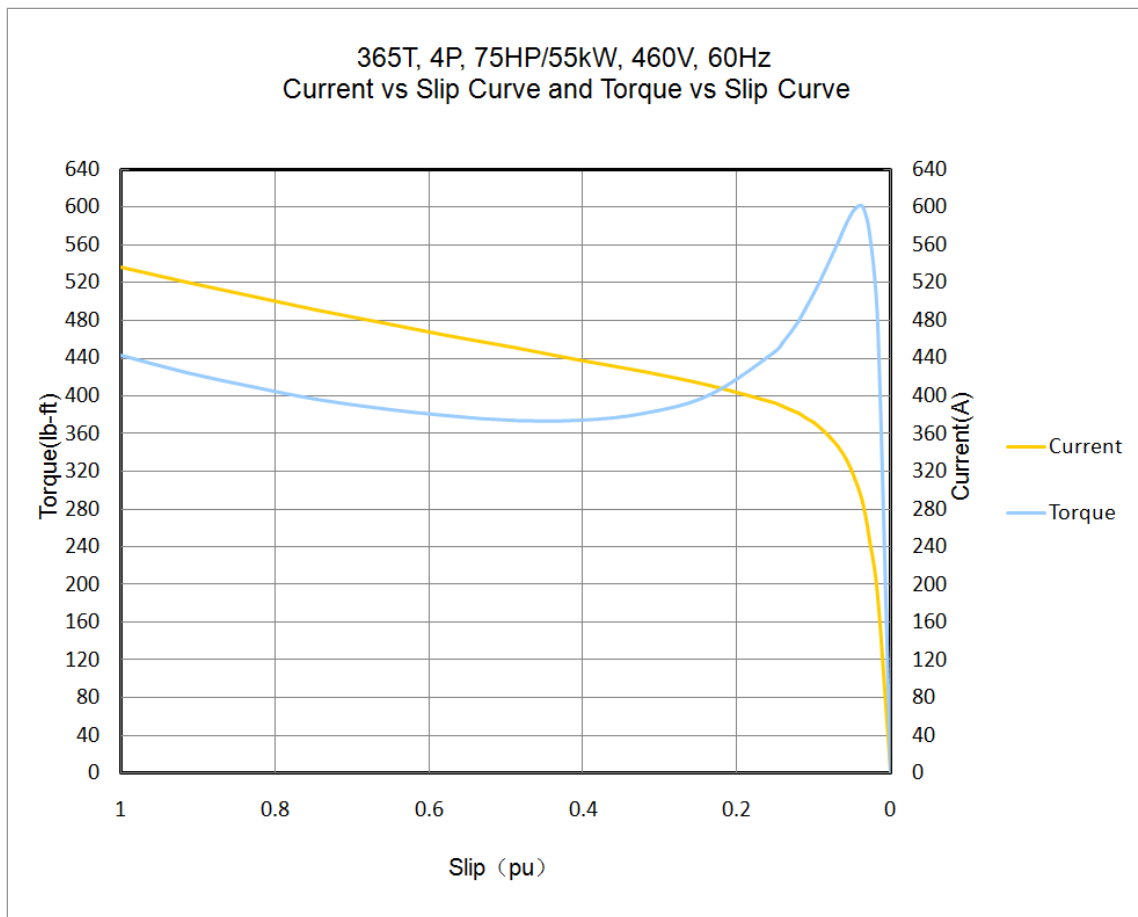
**Performance Characteristic:**

LOAD %	125.0	115.0	100.0	75.0	50.0	25.0	0.0
% EFF	95.48	95.57	95.40	95.30	95.18	93.06	0.00
% PF	89.3	89.3	84.3	82.1	81.1	61.8	21.4
AMPS(460V)	101.15	93.01	85.80	62.18	44.69	29.97	12.13

TORQUE(FL) LB-FT      216.83    TORQUE(LR)%FL      204.0    TORQUE(BD)%FL      276.8  
 AMPS(LR 460V)      536.2    PF AT START      0.31%

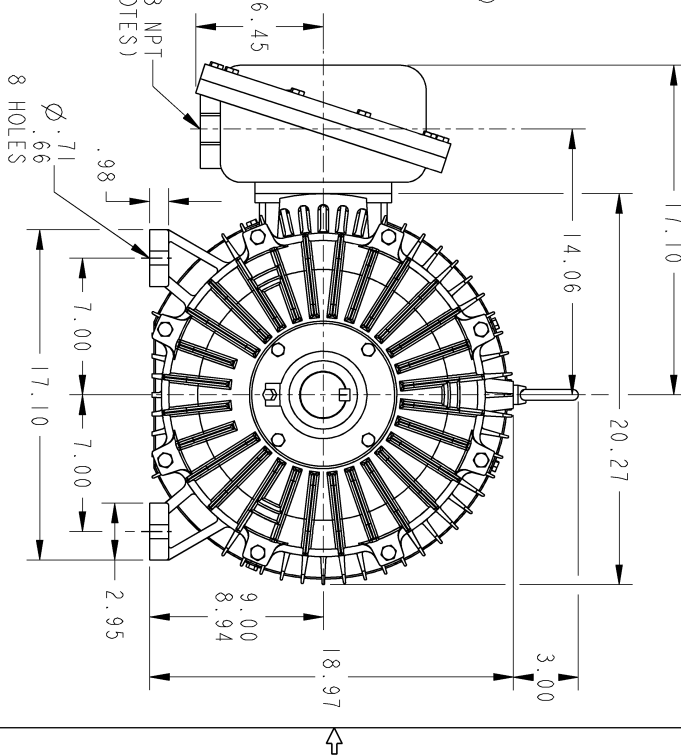
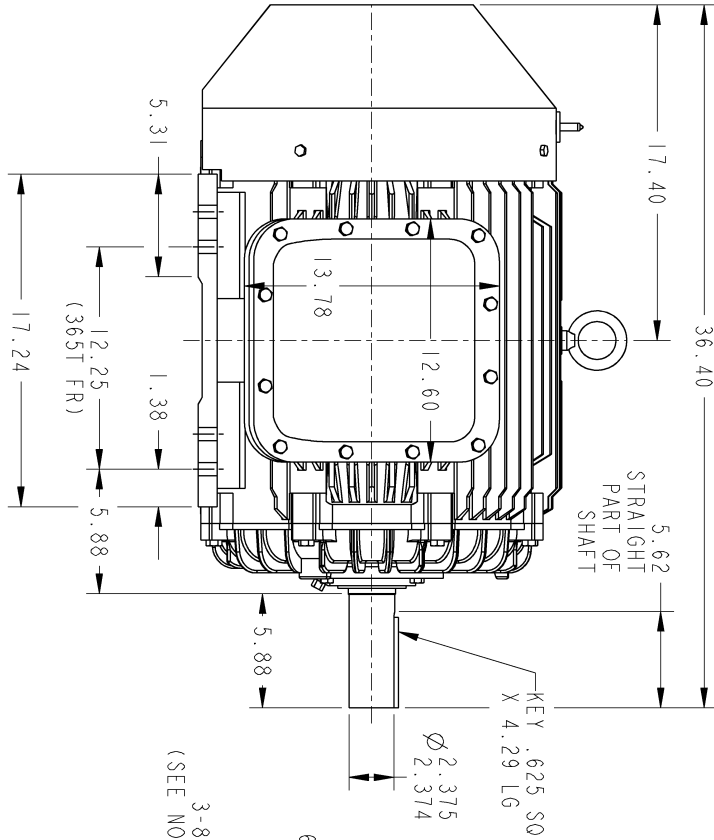
**Other Useful Information for Application:**

Rotor Inertia: Lb-Ft <sup>2</sup> (Kg-m <sup>2</sup> ):	26.1(1.1)
Max load inertia: Lb-Ft <sup>2</sup> (Kg-m <sup>2</sup> ):	338(14.2)
Load Type:	Square Torque/Speed Characteristic
Voltage:	100%
Number of starts per hour:	2 Cold or 1 Hot
Acceleration Time with maximum inertia (sec):	4.7
Safe stall time (sec): Cold/Hot	60/30



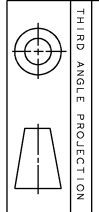
Marks:

- NOTES:
1. CONDUIT BOX IS SUITABLE FOR UP, DOWN OR EITHER SIDE ENTRY.
  2. F1 ASSEMBLY AS SHOWN.
  3. ALL DIMENSIONS ARE IN INCHES.



PROPRIETARY INFORMATION  
 All rights reserved. This document and the information it contains is the property of the Wabong Electric America LLC and/or its affiliates. It has been provided solely for the use of the recipient for the specific project identified in the drawing. No other use, copying, reproducing, selling, importing, exporting, distribution, or transmission of this information is permitted without the written consent of the Wabong Electric America LLC.

REV.	DESCRIPTION	DATE	APPROVED
1	ISAAC #17-0780	10/24/17	SRIKANTH
2	ISSAC #18-0869	SPEEDDEV1 01/07/19	PRASHANTH
3	ISAAC #19-0358	MAGARAJ 04/22/19	SAHID



SIGNATURES	DATE
MODEL: MAGARAJ 06/22/17	
DESIGN: SRIKANTH 06/22/17	
ENGINEER: SRIKANTH 06/22/17	
ISSUED: SRIKANTH 06/22/17	
QUALITY: SRIKANTH 06/22/17	
ISSUED: SRIKANTH 06/22/17	
SOLID MODEL: MODEL NAME	

**GE INDUSTRIAL MOTORS**  
*a Wabong company*

TITLE: **OUTLINE**

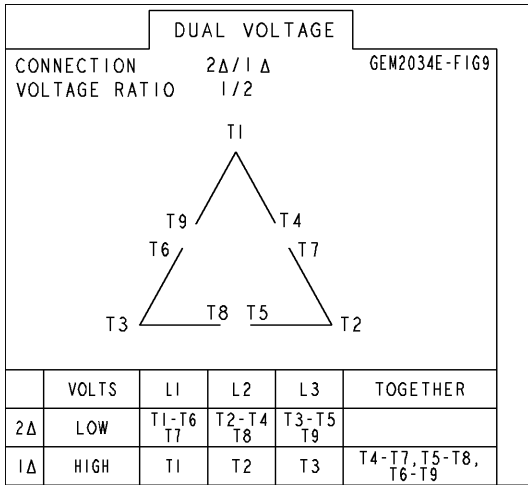
365T TEFC EXPLOSION PROOF  
 481 CU IN C/BOX

358B6506AB 003

SCALE: NTS REF. NO. SHEET 1 OF 1

**Marks:**

**Connection Diagram**  
**GEM2034E-FIG9**



**Thermostat Connection**  
**3027JE-2A**

