

PRODUCT INFORMATION PACKET

Model No: 404TTGS6588

Catalog No: E574

Explosion Proof Motor, 60 HP, 3 Ph, 60 Hz, 230/460 V, 1200 RPM, 404T Frame, EPFC



Regal and are trademarks of Regal Rexnord Corporation or one of its affiliated companies.
©2022 Regal Rexnord Corporation, All Rights Reserved. MC017097E

Nameplate Specifications

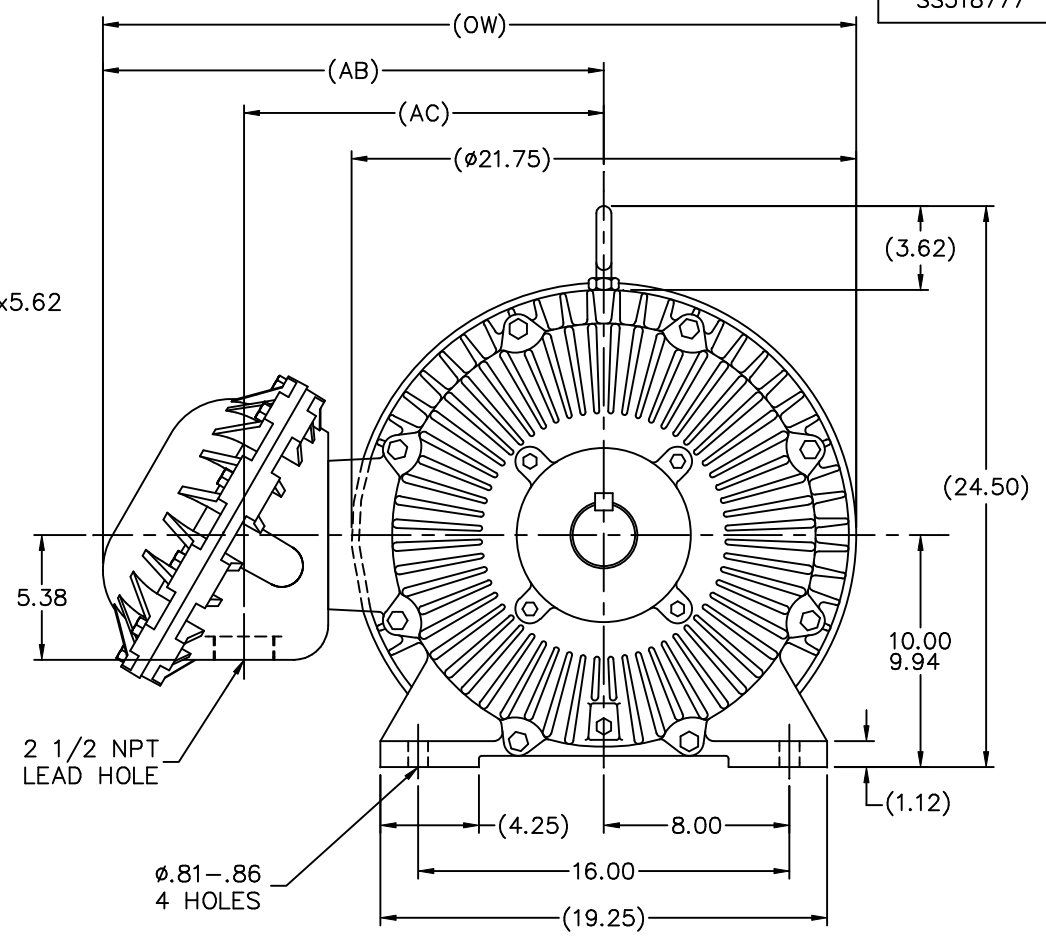
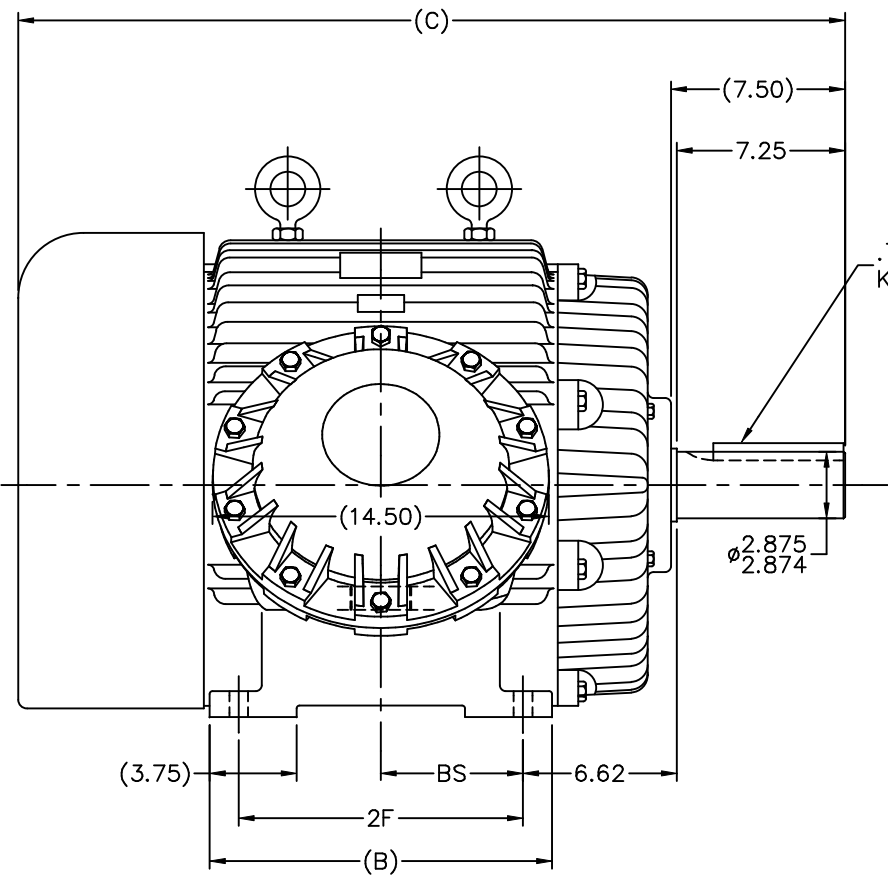
| | | | |
|------------------------|---|----------------------------|-----------------------------------|
| Output HP | 60 Hp | Output KW | 45.0 kW |
| Frequency | 60 Hz | Voltage | 230/460 V |
| Current | 144.0/72.0 A | Speed | 1185 rpm |
| Service Factor | 1 | Phase | 3 |
| Efficiency | 94.5 % | Power Factor | 83 |
| Duty | Continuous | Insulation Class | F |
| Design Code | B | KVA Code | G |
| Frame | 404T | Enclosure | Explosion Proof Fan cooled |
| Thermal Protection | Thermostat | Ambient Temperature | 50 °C |
| Drive End Bearing Size | 6316 | Opp Drive End Bearing Size | 6313 |
| UL | UL Listed And CSA Certified | CSA | Y |
| CE | N | IP Code | 54 |
| Hazardous Location | DIV 1 EXP PROOF CL I GR CD CL II GR FG T3C | Number of Speeds | 1 |

Technical Specifications

| | | | |
|-----------------------|-------------------------------------|-----------------------|-------------------------|
| Electrical Type | Squirrel Cage Inverter Rated | Starting Method | Line Or Inverter |
| Poles | 6 | Rotation | Reversible |
| Resistance Main | .111 Ohms | Mounting | Rigid Base |
| Motor Orientation | Horizontal | Drive End Bearing | Ball |
| Opp Drive End Bearing | Ball | Frame Material | Cast Iron |
| Shaft Type | T | Overall Length | 35.62 in |
| Frame Length | 15.25 in | Shaft Diameter | 2.875 in |
| Shaft Extension | 7.5 in | Assembly/Box Mounting | F1 ONLY |
| Inverter Load | CONSTANT 10:1/VARIABLE 10:1 | | |
| Connection Drawing | A-EE7308AD | Outline Drawing | B-SS518777-1525 |

This is an uncontrolled document once printed or downloaded and is subject to change without notice. Date Created:11/10/2022

SS518777



.75x.75x5.62
KEY

ø2.875
2.874

5.38

2 1/2 NPT
LEAD HOLE

ø.81-.86
4 HOLES

- NOTES:
 1. BOX CAN BE ROTATED IN 90° STEPS
 2. BOX CAN BE MOUNTED ON OPPOSITE SIDE BY REMOVING BRACKETS AND TURNING FRAME 180°
 3. NAMEPLATES TO BE READ FROM CONDUIT BOX SIDE OF MOTOR

| DASH | FRAME | B | C | 2F | AB | AC | BS | OW |
|------|-------|-------|-------|-------|-------|-------|------|-------|
| 1525 | 404T | 14.75 | 35.62 | 12.25 | 21.50 | 15.50 | 6.12 | 32.38 |
| 1675 | 405T | 16.25 | 37.12 | 13.75 | 22.50 | 16.50 | 6.88 | 33.38 |

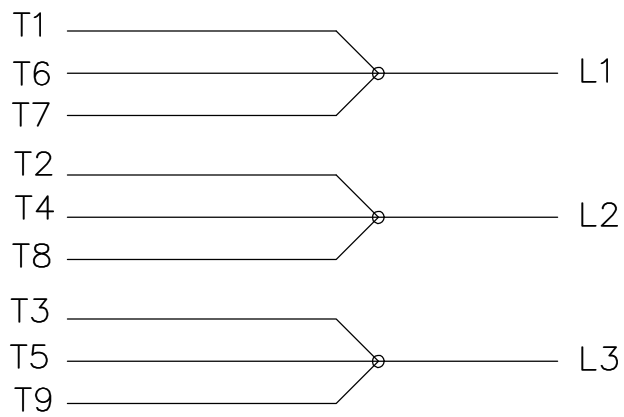
| | | TOLERANCES UNLESS SPECIFIED | | MARATHON ELECTRIC | | DRAWN DRS 12-17-2001 | |
|--|--|-----------------------------|----------------|---------------------------|-------------------|----------------------|--------------------------|
| | | DEC. | INCHES | | | CHK | JHL 013-19-2002 |
| | | .X | ±.1 | | | APPD | JES 03-20-2002 |
| | | .XX | ±.03 | TITLE OUTLINE | | SCALE 3-16 | |
| 2 REDRAWN IN AUTOCAD | | TAT 06-29-2004 | ML .XXX ±.005 | 400T FR. - EXP.PR. - STD. | | REF | |
| 1 NEW DRAWING | | CN 34593 | DRS 03-20-2002 | .XXX ±.0005 | | MATL | |
| NO. REVISION | | BY & DATE | CHK ANG ±730° | FINISH | | PREV | |
| THIS DRAWING IN DESIGN AND DETAIL IS OUR PROPERTY AND MUST NOT BE USED EXCEPT IN CONNECTION WITH OUR WORK ALL RIGHTS OF DESIGN AND INVENTION ARE RESERVED THIS IS AN ELECTRONICALLY GENERATED DOCUMENT - DO NOT SCALE THIS PRINT | | | | RFP | CAD FILE ss518777 | SIZE | DRAWING NO. PAGE OF REV. |
| | | | | DIST WA | | B | SS518777 2 |

ERROR: syntaxerror
OFFENDING COMMAND: --nostringval--

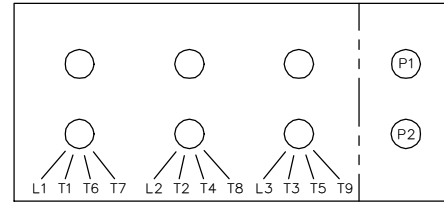
STACK:

-dictionary-
-dictionary-
/Pscript_WinNT_Compat
-dictionary-

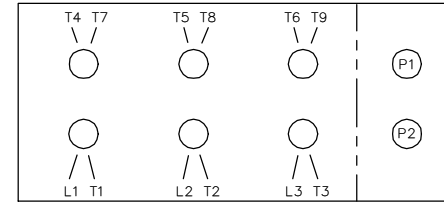
LOW VOLTAGE



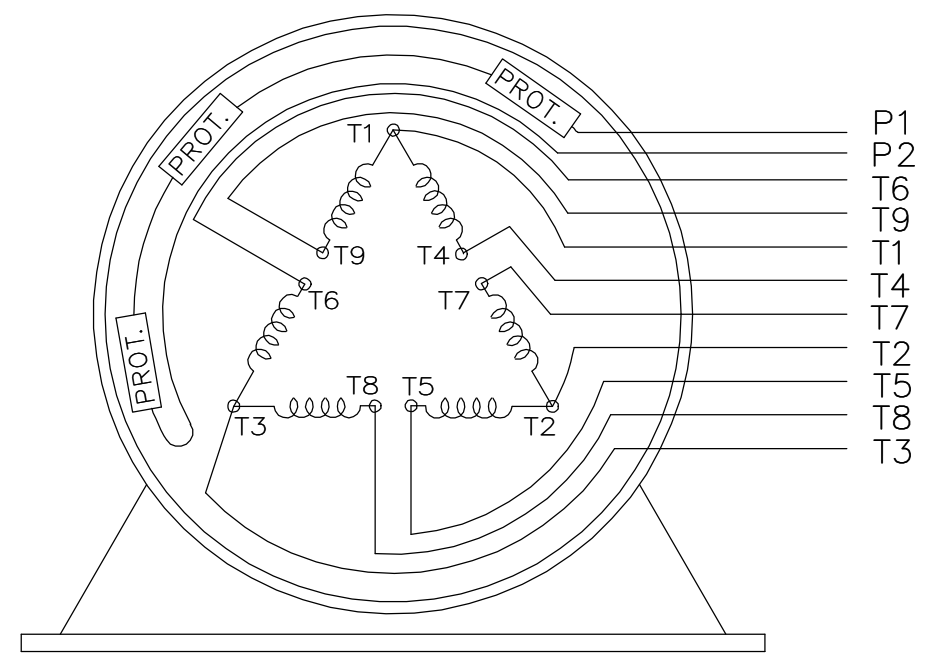
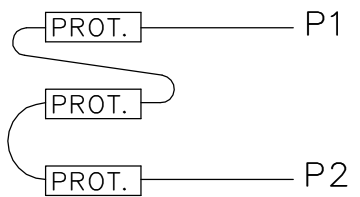
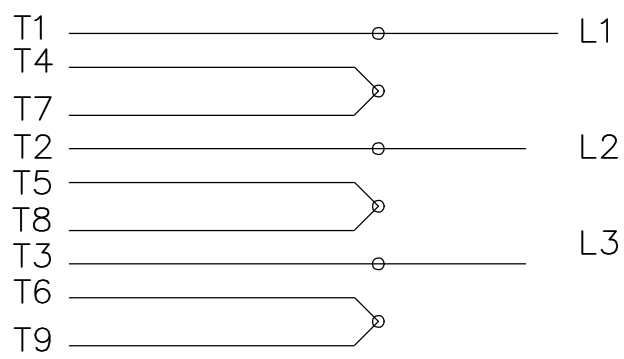
LOW VOLTAGE



HIGH VOLTAGE



HIGH VOLTAGE



VIEW OF TERMINAL END

WHEN MORE THAN ONE PROT. IS USED; PROT. ARE CONNECTED IN SERIES

| | | | | | | | | | |
|--|--|--------------------------|--------------------------------------|--|------------------|---------------------------|----------------------|---|--|
| DRAWING REVISION L | | REVISION BY JP | REV DATE/© DATE 06-21-2019 | TOLERANCES (EXCEPT AS NOTED): | | DRAWN BY MJD | | Regal Beloit America, Inc. | |
| ECO ECO-0168744 | | APPROVED BY MH | DATE 06-21-2019 | DEC. .X | INCH ±0.1 | mm [±3] | ANGLE ±7° 30" | | |
| ECO DESCRIPTION UPDATED TO CURRENT STANDARDS | | | | REMOVE BURRS & BREAK SHARP EDGES: .003/.015 [.08/.38] X 45° | | APPROVED BY GK | | DESCRIPTION CONN DIAGRAM-EXTERNAL | |
| COPYRIGHT (PER REVISION DATE) REGAL BELOIT AMERICA, INC. ALL RIGHTS RESERVED. PROPRIETARY AND CONFIDENTIAL INFORMATION - THIS DOCUMENT IS THE PROPERTY OF REGAL BELOIT AMERICA, INC. ("OWNER") AND CONTAINS OWNER'S PROPRIETARY INFORMATION. ANY PERSON, CORPORATION OR OTHER FIRM RECEIVING IT IS DEEMED, BY RECEIVING IT, TO AGREE THAT IT, AND/OR ANY PART OF IT, SHALL NOT BE DISCLOSED TO ANY PERSON, CORPORATION OR OTHER ENTITY, DUPLICATED, AND/OR USED, EXCEPT AS EXPRESSLY APPROVED IN WRITING IN ADVANCE BY OWNER. THIS DOCUMENT SHALL BE RETURNED TO OWNER UPON REQUEST. IT MAY BE SUBJECT TO CERTAIN RESTRICTIONS UNDER APPLICABLE EXPORT CONTROL LAWS AND REGULATIONS. | | | | CORNER FILLETS: R.02 [.5] | | DATE 01-07-1998 | | MATERIAL | |
| | | | | MACHINED SURFACES: 200/ 5.1 | | REFERENCE | | PROCESS/FINISH | |
| | | | | mm DIMENSIONS IN [BRACKETS] ARE FOR REFERENCE ONLY | | THIRD ANGLE PROJECTION | | DRAWING NUMBER EE7308AD | |
| | | | | | | | | SHEET 1 OF 1 | |

Data Sheet

Date: 6/20/2017

Customer: _____

Attention: _____

Submitted by: FAREEDA DUDEKULA



404TTGS6588

Submittal

Data @ 460 V

Motor Load Data

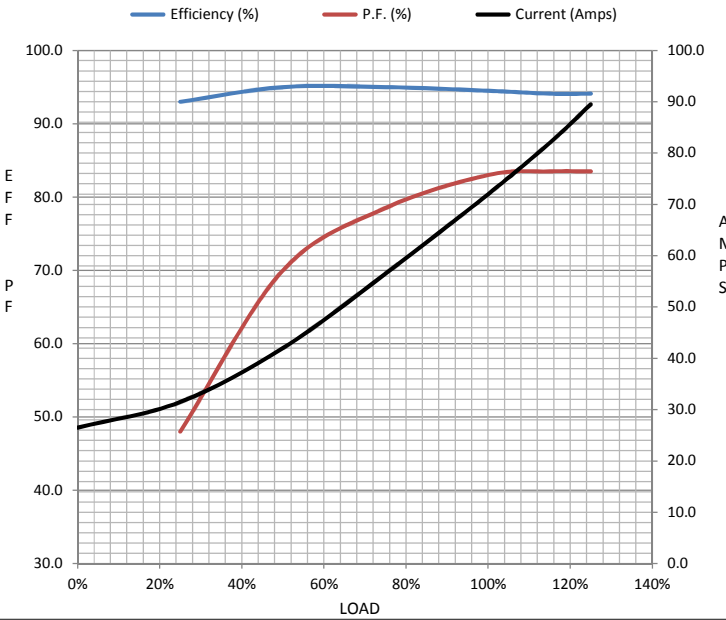
| Load | 0% | 25% | 50% | 75% | 100% | 115% | 125% | LR |
|----------------|------|------|------|------|------|-------|------|------|
| Current (Amps) | 26.5 | 31.5 | 42.0 | 56.5 | 72.0 | 82.0 | 89.5 | 435 |
| Torque (ft-lb) | 0.00 | 65.5 | 132 | 199 | 266 | 306 | 333 | 535 |
| RPM | 1200 | 1196 | 1194 | 1188 | 1185 | 1,182 | 1180 | 0 |
| Efficiency (%) | | 93.0 | 95.0 | 95.0 | 94.5 | 94.1 | 94.1 | |
| P.F. (%) | 4.5 | 48.0 | 70.0 | 78.5 | 83.0 | 83.5 | 83.5 | 36.0 |

Motor Speed Data

| | LR | Pull-Up | BD | Rated | Idle |
|----------------|-----|---------|------|-------|------|
| Speed (RPM) | 0 | 600 | 1050 | 1185 | 1200 |
| Current (Amps) | 435 | 390 | 240 | 72.0 | 26.5 |
| Torque (ft-lb) | 535 | 475 | 650 | 266 | 0.00 |

Information Block

| | | | | |
|-----------------------------|-------------------------|--------|--------|--------|
| HP | 60.0 | | | |
| Sync. RPM | 1200 | | | |
| Frame | 404 | | | |
| Enclosure | TEFC | | | |
| Construction | TFS | | | |
| Voltage | 230/460 V | | | |
| Frequency | 60 Hz | | | |
| Design | B | | | |
| LR Code letter | G | | | |
| Service Factor | 1.15 | | | |
| Temp Rise @ FL | 60 °C | | | |
| Duty | CONT | | | |
| Ambient | 40 °C | | | |
| Elevation | 1,000 feet | | | |
| Rotor/Shaft wk ² | 33.5 Lb-Ft ² | | | |
| Ref Wdg | T404640 NONE | | | |
| Sound Pressure @ 1M | 68 dBA | | | |
| VFD Rating | CONSTANT 10:1 | | | |
| Outline Dwg | B-SS518777-1525 | | | |
| Conn. Diag | A-EE7308AD | | | |
| Additional Specifications: | | | | |
| 0 | | | | |
| 0 | | | | |
| EQUIV CKT (OHMS / PHASE) | | | | |
| R1 | R2 | X1 | X2 | Xm |
| 0.0710 | 0.0430 | 0.3940 | 0.5270 | 9.5450 |



Speed - Torque Curve

