

**BALDOR<sup>®</sup> • RELIANCE** 

**Product Information Packet**

**ECP3667T**

**1.5HP, 1170RPM, 3PH, 60HZ, 182T, 0630M, TEFC, F**

| Part Detail |        |             |            |             |        |               |            |
|-------------|--------|-------------|------------|-------------|--------|---------------|------------|
| Revision:   | U      | Status:     | PRD/A      | Change #:   |        | Proprietary:  | No         |
| Type:       | AC     | Elec. Spec: | 06WGW969   | CD Diagram: | CD0005 | Mfg Plant:    |            |
| Mech. Spec: | 06H483 | Layout:     | 06LYH483   | Poles:      | 06     | Created Date: | 12-02-2010 |
| Base:       | RG     | Eff. Date:  | 04-22-2021 | Leads:      | 9#16   |               |            |

| Specs                           |                  |                                |                              |
|---------------------------------|------------------|--------------------------------|------------------------------|
| Catalog Number:                 | ECP3667T         | Front Shaft Indicator:         | None                         |
| Enclosure:                      | TEFC             | Heater Indicator:              | No Heater                    |
| Frame:                          | 182T             | Insulation Class:              | F                            |
| Frame Material:                 | Iron             | Inverter Code:                 | Inverter Ready               |
| Output @ Frequency:             | 1.500 HP @ 60 HZ | KVA Code:                      | K                            |
| Synchronous Speed @ Frequency:  | 1200 RPM @ 60 HZ | Lifting Lugs:                  | Standard Lifting Lugs        |
| Voltage @ Frequency:            | 208.0 V @ 60 HZ  | Locked Bearing Indicator:      | No Locked Bearing            |
|                                 | 460.0 V @ 60 HZ  | Motor Lead Quantity/Wire Size: | 9 @ 16 AWG                   |
|                                 | 230.0 V @ 60 HZ  | Motor Lead Exit:               | Ko Box                       |
| XP Class and Group:             | CLI GP A,B,C,D   | Motor Lead Termination:        | Flying Leads                 |
| XP Division:                    | Division II      | Motor Type:                    | 0630M                        |
| Agency Approvals:               | CSA EEV          | Mounting Arrangement:          | F1                           |
|                                 | UR               | Power Factor:                  | 65                           |
|                                 | CSA              | Product Family:                | Chemical Processing (Not DC) |
|                                 | CCSA US          | Pulley End Bearing Type:       | Ball                         |
| Auxillary Box:                  | No Auxillary Box | Pulley Face Code:              | Standard                     |
| Auxillary Box Lead Termination: | None             | Pulley Shaft Indicator:        | Standard                     |
| Base Indicator:                 | Rigid            | Rodent Screen:                 | None                         |

|                                       |                           |                                    |                     |
|---------------------------------------|---------------------------|------------------------------------|---------------------|
| <b>Bearing Grease Type:</b>           | Polyrex EM (-20F +300F)   | <b>Shaft Extension Location:</b>   | Pulley End          |
| <b>Blower:</b>                        | None                      | <b>Shaft Ground Indicator:</b>     | No Shaft Grounding  |
| <b>Constant Torque Speed Range:</b>   | 1.5                       | <b>Shaft Rotation:</b>             | Reversible          |
| <b>Current @ Voltage:</b>             | 5.200 A @ 208.0 V         | <b>Shaft Slinger Indicator:</b>    | Shaft Slinger       |
|                                       | 5.000 A @ 230.0 V         | <b>Speed Code:</b>                 | Single Speed        |
|                                       | 2.500 A @ 460.0 V         | <b>Motor Standards:</b>            | NEMA                |
| <b>Design Code:</b>                   | B                         | <b>Starting Method:</b>            | Direct on line      |
| <b>Drip Cover:</b>                    | No Drip Cover             | <b>Thermal Device - Bearing:</b>   | None                |
| <b>Duty Rating:</b>                   | CONT                      | <b>Thermal Device - Winding:</b>   | None                |
| <b>Electrically Isolated Bearing:</b> | Not Electrically Isolated | <b>Vibration Sensor Indicator:</b> | No Vibration Sensor |
| <b>Enclosure Modification:</b>        | Severe Duty Features      | <b>Winding Thermal 1:</b>          | None                |
| <b>Feedback Device:</b>               | NO FEEDBACK               | <b>Winding Thermal 2:</b>          | None                |
| <b>Front Face Code:</b>               | Standard                  | <b>XP Temp Code:</b>               | T3C                 |

|                          |              |    |  |             |           |            |            |    |  |  |
|--------------------------|--------------|----|--|-------------|-----------|------------|------------|----|--|--|
| <b>Nameplate NP3257E</b> |              |    |  |             |           |            |            |    |  |  |
| <b>CAT.NO.</b>           | ECP3667T     |    |  |             |           |            |            |    |  |  |
| <b>SPEC.</b>             | 06H483W969G1 |    |  |             |           |            |            |    |  |  |
| <b>HP</b>                | 1.5          | TE |  |             |           |            |            |    |  |  |
| <b>VOLTS</b>             | 208-230/460  |    |  |             |           |            |            |    |  |  |
| <b>AMP</b>               | 5.2-5/2.5    |    |  |             |           |            |            |    |  |  |
| <b>RPM</b>               | 1170         |    |  |             |           |            |            |    |  |  |
| <b>FRAME</b>             | 182T         |    |  |             |           |            | <b>HZ</b>  | 60 |  |  |
| <b>SER.F.</b>            | 1.15         |    |  | <b>CODE</b> | K         |            | <b>DES</b> | B  |  |  |
| <b>RATING</b>            | 40C AMB-CONT |    |  |             |           |            |            |    |  |  |
| <b>SN</b>                |              |    |  |             |           |            |            |    |  |  |
| <b>DE</b>                | 6206         |    |  |             |           | <b>ODE</b> | 6206       |    |  |  |
| <b>NEMA-NOM-EFF</b>      | 87.5         |    |  |             | <b>PF</b> | 65         |            |    |  |  |
| <b>G.MIN.EFF</b>         | 87.5         |    |  |             | <b>CC</b> | 010A       |            |    |  |  |
| <b>T. CODE</b>           | T3C          |    |  |             | <b>T=</b> | 160        |            |    |  |  |
|                          |              |    |  |             |           |            | <b>PH</b>  | 3  |  |  |
|                          |              |    |  |             |           |            | <b>CL</b>  | F  |  |  |

| Nameplate NP3260E |                         |
|-------------------|-------------------------|
| SPEC.             | 06H483W969G1            |
| D.E. BRG.         | 30BC02XP30X             |
| O.D.E. BRG.       | 30BC02XP30X             |
| GREASE            | POLYREX EM              |
| RPM MAX           | 1800                    |
|                   | MAX. KVAR N/A           |
| BLANK             |                         |
| INV. TYPE         | PWM                     |
| T=                | 160                     |
| C HP FR           | 60                      |
| CT HZ FROM        | 1.5                     |
| VT HZ FROM        | 0-                      |
| HTR-VOLTS         |                         |
| HTR-WATTS         |                         |
| C HP TO           | 90                      |
| CT HZ TO          | 60                      |
| VT HZ TO          | 60                      |
| HTR-AMPS          |                         |
|                   | MAX. SPACE HEATER TEMP. |

| Parts List    |  |          |
|---------------|--|----------|
| Part Number   | Description                              | Quantity |
| SA213042      | SA 06H483W969G1                          | 1.000 EA |
| RA200269      | RA 06H483W969G1                          | 1.000 EA |
| 36FN3000C01SP | EXFN, PLASTIC, 5.25 OD, .912 ID          | 1.000 EA |
| HW3201A05     | 3/8-16 EYEBOLT                           | 1.000 EA |
| 06CB1000A02G  | CONDUIT BOX, MACH GRAY                   | 1.000 EA |
| RM1016        | LEAD SEPARATOR GASKET - 305/306 C.P.MOTO | 1.000 EA |
| 51XF2520A16   | SCREW,HEX SER SLT HD,ZN 1/4-20X1.00LG TD | 2.000 EA |
| 11XW1032G06   | 10-32 X .38, TAPTITE II, HEX WSHR SLTD U | 1.000 EA |
| HW3001B02     | BRASS CUP WASHER W/GROUND SYMBOL TAB,    | 1.000 EA |
| 10XN2520S06   | 1/4 20X3/8 HX HD CAP S.S.                | 2.000 EA |
| WD1000B16     | T&B CX70TN OR L70P TERMINAL LUG          | 1.000 EA |
| 36FE1100B72G  | FREP ASSEMBLY FOR ROUTING PURPOSES       | 1.000 EA |
| HW4500A17     | 317400 ALEMITE GREASE RELIEF             | 1.000 EA |
| HW4500A01     | 1641B(ALEMITE)400 UNIV, GREASE FITT      | 1.000 EA |
| HA4051A00     | PLASTIC CAP FOR GREASE FITTING           | 1.000 EA |
| HA4054        | SHORT T-DRAIN FITTING, .125" N.P.T.      | 1.000 EA |
| HA4054        | SHORT T-DRAIN FITTING, .125" N.P.T.      | 1.000 EA |
| HW5100A06     | W2420-025 WVY WSHR (WB)                  | 1.000 EA |
| 36PE1100A29G  | PUEP ASSEMBLY FOR ROUTING PURPOSES       | 1.000 EA |
| HW4500A01     | 1641B(ALEMITE)400 UNIV, GREASE FITT      | 1.000 EA |
| HA4051A00     | PLASTIC CAP FOR GREASE FITTING           | 1.000 EA |
| HW4500A17     | 317400 ALEMITE GREASE RELIEF             | 1.000 EA |
| HA4054        | SHORT T-DRAIN FITTING, .125" N.P.T.      | 1.000 EA |
| HA3101A34     | THRUBOLT- 1/4-20 X 10.375                | 4.000 EA |

| Parts List (continued) |  |          |
|------------------------|--|----------|
| Part Number            | Description                              | Quantity |
| XY2520A12              | 1/4-20 HEX NUT, DIRECTIONAL SERRATIONS   | 4.000 EA |
| 06FH1004A01G           | FAN HOUSING MACH, W/GRAY EPOXY           | 1.000 EA |
| WD4100A02              | DP-1000 HEYCO PLUG OR 62MP1000 MICRO PL  | 1.000 EA |
| 10XN2520A24            | 1/4-20X 1 1/2 HEX HD X                   | 3.000 EA |
| 06CB1502G              | LIPPED CONDUIT BOX LID CAST, GRAY EPOXY  | 1.000 EA |
| 06GS1003               | GASKET, KOBX LID, 1/8" THICK BLACK NEOPR | 1.000 EA |
| 10XN2520A12            | 1/4-20 X 3/4 HEX HEAD CAP                | 2.000 EA |
| HW1001A25              | LOCKWASHER 1/4, ZINC PLT .493 OD, .255 I | 2.000 EA |
| HA1005A22              | SLINGER, OD 2.00, ID 1.14, 206 BRG, GM   | 1.000 EA |
| HW4600B36SP            | V-RING SLINGER 1.188 X 1.690 X .24 VITON | 1.000 EA |
| HW2501E16              | KEY, 1/4 SQ X 1.750                      | 1.000 EA |
| HA7000A02              | KEY RETAINER RING, 1 1/8 DIA, 1 3/8 DIA  | 1.000 EA |
| MJ5001A27              | 32220KN GRAY SEALER *MIN BUY 4 QTS=1GAL  | 0.001 QT |
| 85XU0407S04            | 4X1/4 U DRIVE PIN STAINLESS              | 2.000 EA |
| LB1115N                | LABEL,LIFTING DEVICE (ON ROLLS)          | 1.000 EA |
| LB1002N                | LABEL,MARINE DUTY (ON ROLLS)             | 1.000 EA |
| MJ1000A02              | GREASE, MOBIL POLYREX EM - 124047        | 0.050 LB |
| MG1025N19              | WILKOFASST, 778.50, RELIANCE BLUE-GREEN  | 0.028 GA |
| LB1449                 | DIV-2/NEC WARNING LABEL                  | 1.000 EA |
| LC0005E01              | CONN.DIA./WARNING LABEL (LC0005/LB1119N) | 1.000 EA |
| NP3257E                | SS CP SUPER-E DIV-2 UL CSA-C US EEV PREM | 1.000 EA |
| NP3260E                | SS CP SUPER-E AUX DATA INFORMATION       | 1.000 EA |
| 85XU0407S04            | 4X1/4 U DRIVE PIN STAINLESS              | 2.000 EA |
| 36PA1001               | PKG GRP, PRINT PK1017A06                 | 1.000 EA |

|          |   |          |
|----------|---|----------|
| MN416A01 | TAG-INSTAL-MAINT no wire (2100/bx) 4/22 | 1.000 EA |
| HA4054   | SHORT T-DRAIN FITTING, .125" N.P.T.     | 1.000 EA |



**AC Induction Motor Performance Data**

Record # 47055

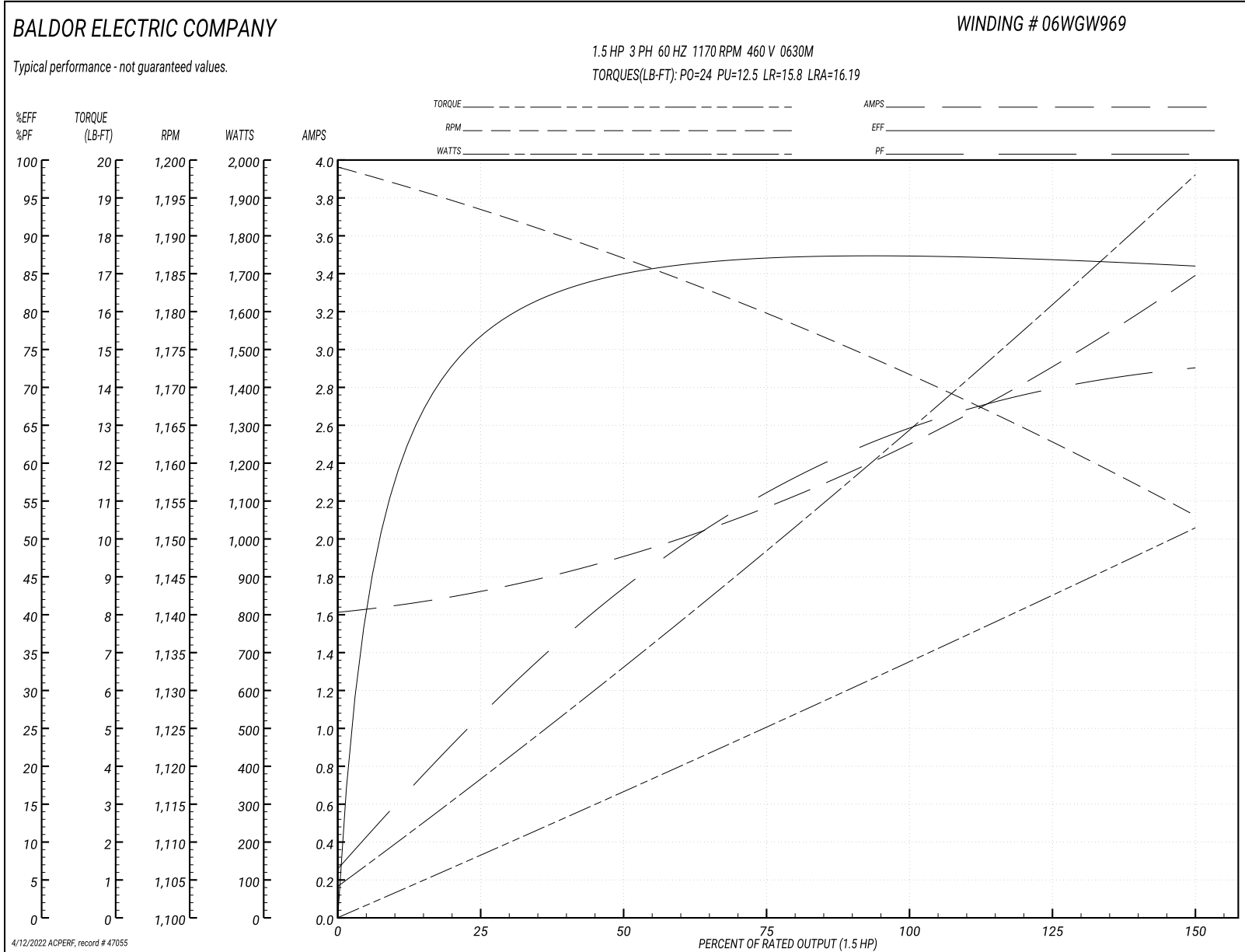
Typical performance - not guaranteed values

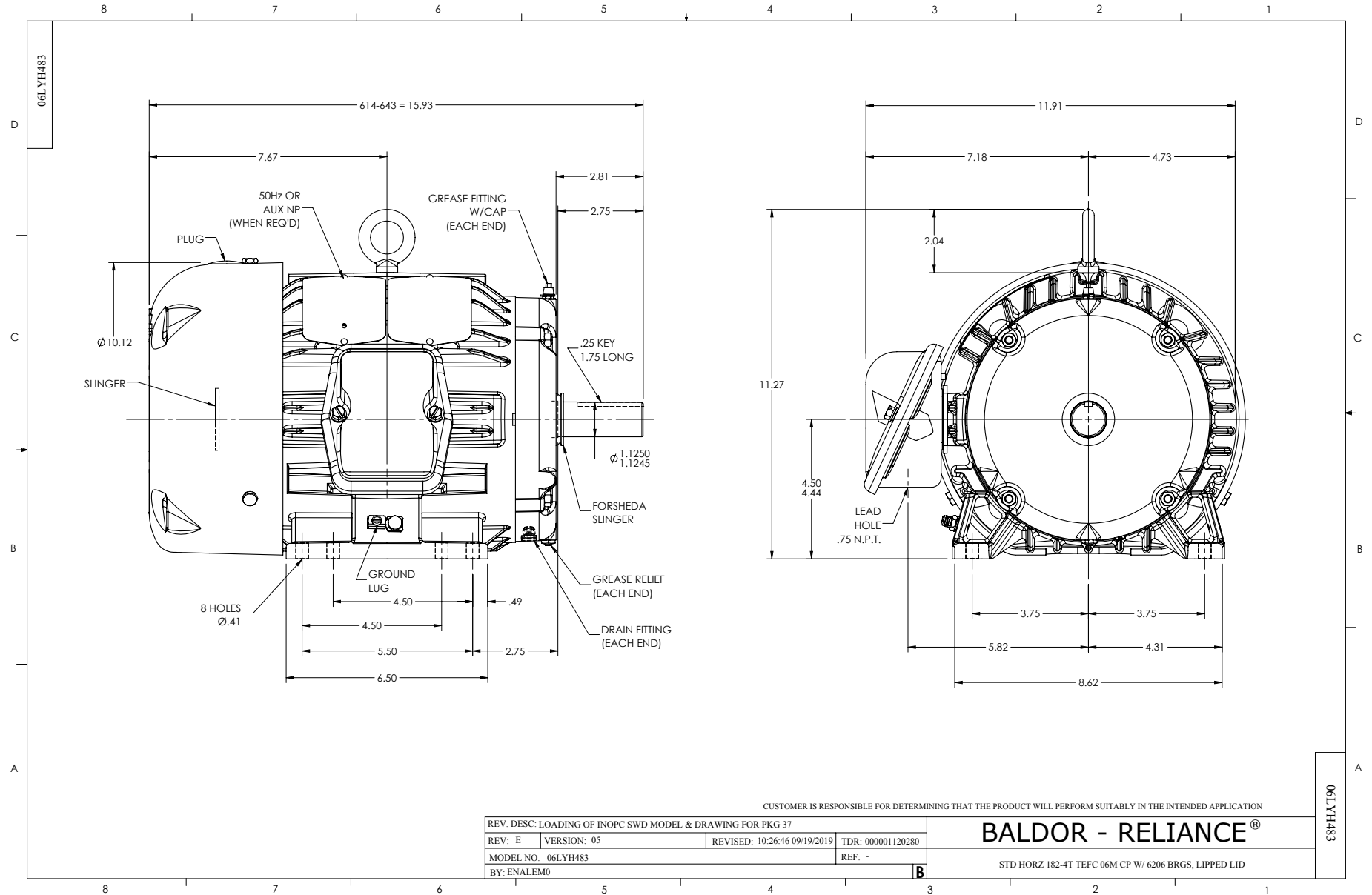
| <b>Winding: 06WGW969-R015</b> |                          | <b>Type: 0630M</b>             |  | <b>Enclosure: TEFC</b> |  |  |
|-------------------------------|--------------------------|--------------------------------|--|------------------------|--|--|
| <b>Nameplate Data</b>         |                          |                                | <b>460 V, 60 Hz:<br/>High Voltage Connection</b> |                        |  |  |
| <b>Rated Output (HP)</b>      | 1.5                      | <b>Full Load Torque</b>        | 6.77 LB-FT                                       |                        |  |  |
| <b>Volts</b>                  | 208-230/460              | <b>Start Configuration</b>     | direct on line                                   |                        |  |  |
| <b>Full Load Amps</b>         | 5.2-5/2.5                | <b>Breakdown Torque</b>        | 24 LB-FT   |                        |  |  |
| <b>R.P.M.</b>                 | 1170                     | <b>Pull-up Torque</b>          | 12.5 LB-FT                                       |                        |  |  |
| <b>Hz</b>                     | 60 <b>Phase</b>          | 3                              | <b>Locked-rotor Torque</b>                       | 15.8 LB-FT             |  |  |
| <b>NEMA Design Code</b>       | <b>B KVA Code</b>        | K                              | <b>Starting Current</b>                          | 16.19 A                |  |  |
| <b>Service Factor (S.F.)</b>  | 1.15                     | <b>No-load Current</b>         | 1.63 A   |                        |  |  |
| <b>NEMA Nom. Eff.</b>         | 87.5 <b>Power Factor</b> | 65                             | <b>Line-line Res. @ 25°C</b>                     | 7.34 Ω                 |  |  |
| <b>Rating - Duty</b>          | 40C AMB-CONT             | <b>Temp. Rise @ Rated Load</b> | 26°C   |                        |  |  |
| <b>S.F. Amps</b>              |                          | <b>Temp. Rise @ S.F. Load</b>  | 32°C   |                        |  |  |

**Load Characteristics 460 V, 60 Hz, 1.5 HP**

| <b>% of Rated Load</b> | <b>25</b> | <b>50</b> | <b>75</b> | <b>100</b> | <b>125</b> | <b>150</b> | <b>S.F.</b> |
|------------------------|-----------|-----------|-----------|------------|------------|------------|-------------|
| <b>Power Factor</b>    | 27        | 44        | 56        | 65         | 69         | 73         | 67          |
| <b>Efficiency</b>      | 76.9      | 85        | 87.1      | 87.6       | 87         | 86         | 87.2        |
| <b>Speed</b>           | 1193.7    | 1186.9    | 1179.4    | 1171.7     | 1163.1     | 1152.9     | 1167        |
| <b>Line amperes</b>    | 1.7       | 1.9       | 2.18      | 2.51       | 2.92       | 3.38       | 2.76        |

Performance Graph at 460V, 60Hz, 1.5HP Typical performance - Not guaranteed values

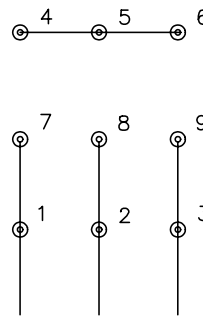




CD0005

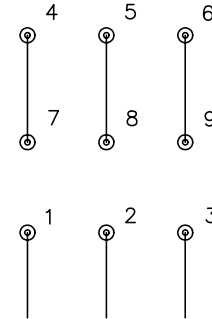


LOW VOLTAGE  
(2Y)



LINE

HIGH VOLTAGE  
(1Y)



LINE

NOTES:

1. INTERCHANGE ANY TWO LINE LEADS TO REVERSE ROTATION.
2. OPTIONAL THERMOSTATS ARE PROVIDED WHEN SPECIFIED.
3. ACTUAL NUMBER OF INTERNAL PARALLEL CIRCUITS MAY BE A MULTIPLE OF THOSE SHOWN ABOVE.
4. LEAD COLORS ARE OPTIONAL. LEADS MUST ALWAYS BE NUMBERED AS SHOWN.

|   |         |                         |              |
|---|---------|-------------------------|--------------|
| REV. DESC: REVISE TO SHOW OPTIONAL COLORS |         |                         |              |
| REV. LTR: E                               | BY: JLP | REVISED: 01/19/99 10:15 | TDR: 0171435 |
| 900000                                    |         | FILE: AAA00005140       | MDL: -       |
|   |         | MTL: -                  |              |

**BALDOR ELECTRIC Co.**

3PH, DV, 9 LEADS

CD0005