

BALDOR • RELIANCE

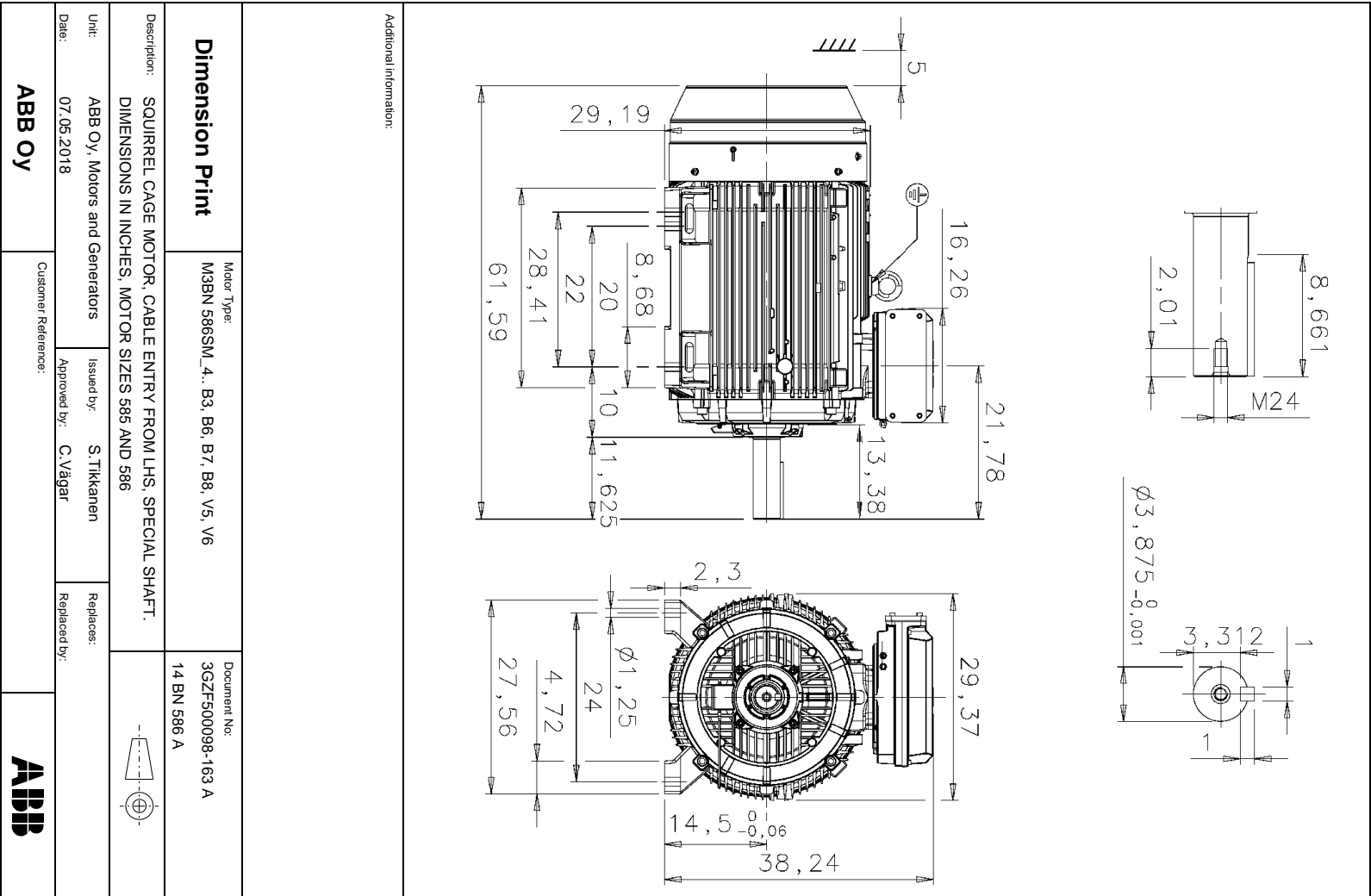
Product Information Packet

ECR583008-PP

M3BN 587MLB 8P B3 300HP

Specs			
Frame:	58		
Output @ Frequency:	300.00 KW @ 60 HZ		
Synchronous Speed @ Frequency:	900 RPM @ 60 HZ		
Voltage @ Frequency:	460 V @ 60 HZ		
	575 V @ 60 HZ		
Duty Rating:	S1		
Insulation Class:	F		
IP Rating:	IP55		
Speed Code:	Single Speed		
Motor Standards:	NEMA		

Starting Method:	Full Voltage		
-------------------------	--------------	--	--



<h2 style="margin: 0;">Connection Diagram</h2>		Document No: 3GZF321100-1 E
Description: 3-PHASE SQUIRREL-CAGE MOTOR		
Unit: Motors Date: 21.09.2005	Issued by: M Prusi Approved by: Jari Raittila	Replaces: Replaced by:
Customer Reference: ABB Oy		

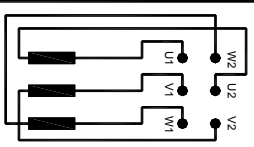
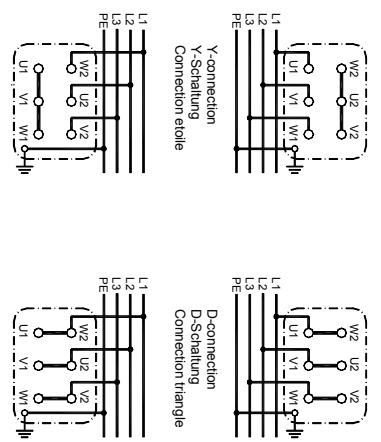

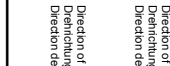
<p style="text-align: center;">Diagram of connection Anschluss-Schema Schema de branchement</p> 	<p style="text-align: center;">Connection of terminals Anschluss des Motors Branchement des bornes</p> 	<p style="text-align: center;">Direction of rotation with phase sequence shown in picture Drehrichtung nach Schaltbild Direction de rotation avec branchement ci-dessus</p>  <p style="text-align: center;">Direction of rotation with reversed phase sequence Drehrichtung mit umgekehrter Phasenfolge Direction de rotation avec sequence de phase reversee</p> 		
<table border="1" style="width: 100%; border-collapse: collapse;"> <tr> <td style="width: 50%;"> Motor No Machine Nr No du moteur ABB Oy, Motors </td> <td style="width: 50%;"> 3GZF321100-1 E </td> </tr> </table>			Motor No Machine Nr No du moteur ABB Oy, Motors	3GZF321100-1 E
Motor No Machine Nr No du moteur ABB Oy, Motors	3GZF321100-1 E			

ABB Oy		Classifying code or document type	
Motors & Generators		PERFORMANCE DATA OF MOTOR	
Department/Author MLA000/TISA	Date of Issue 12.3.2018	Lang. En	Rev. date TMAA-ASUG9J-TISA24
Customer ref.		Saving Ident TMAA-ASUG9J-TISA24	Our ref. TMAA-ASUG9J-TISA24
		Rev./Changed by A	Pages 1/3

Driven Motor:


Motor type code	M3BN 586 SMC 8G			
Motor product code	3GBN984230-ADG (+209)			
Motor type	Squirrel cage Motor			
Mounting designation	IM 1001			
Protected by enclosure	TEFC			
Method of cooling	TEFC			
Insulation	Class F (Shock Resistant)			
Service factor	SF1.15 TEMP RISE CLASS F			
Standards	NEMA			
Ambient temperature, max.	40 °C			
Altitude, max.	3280 ft.a.s.l.			
Duty type	Continuous			
Temp. rise	Class B			
Connection of stator winding	Delta			
Rated output	300 HP			
Voltage	460 V			
Frequency	60 Hz			
Speed	893 r/min			
Current	379 Amps			
Locked rotor Amps	780 %			
Locked rotor torque	160 %			
Breakdown torque	280 %			
No load current	170 Amps			
Rated torque	1765 lb-ft			
Load characteristics				
	Load %	Current Amps	Efficiency %	Power Factor
	100	379	95,0	0,78
	75	304	94,9	0,73
	50	240	94,2	0,62

Typical calculated values to NEMA. -

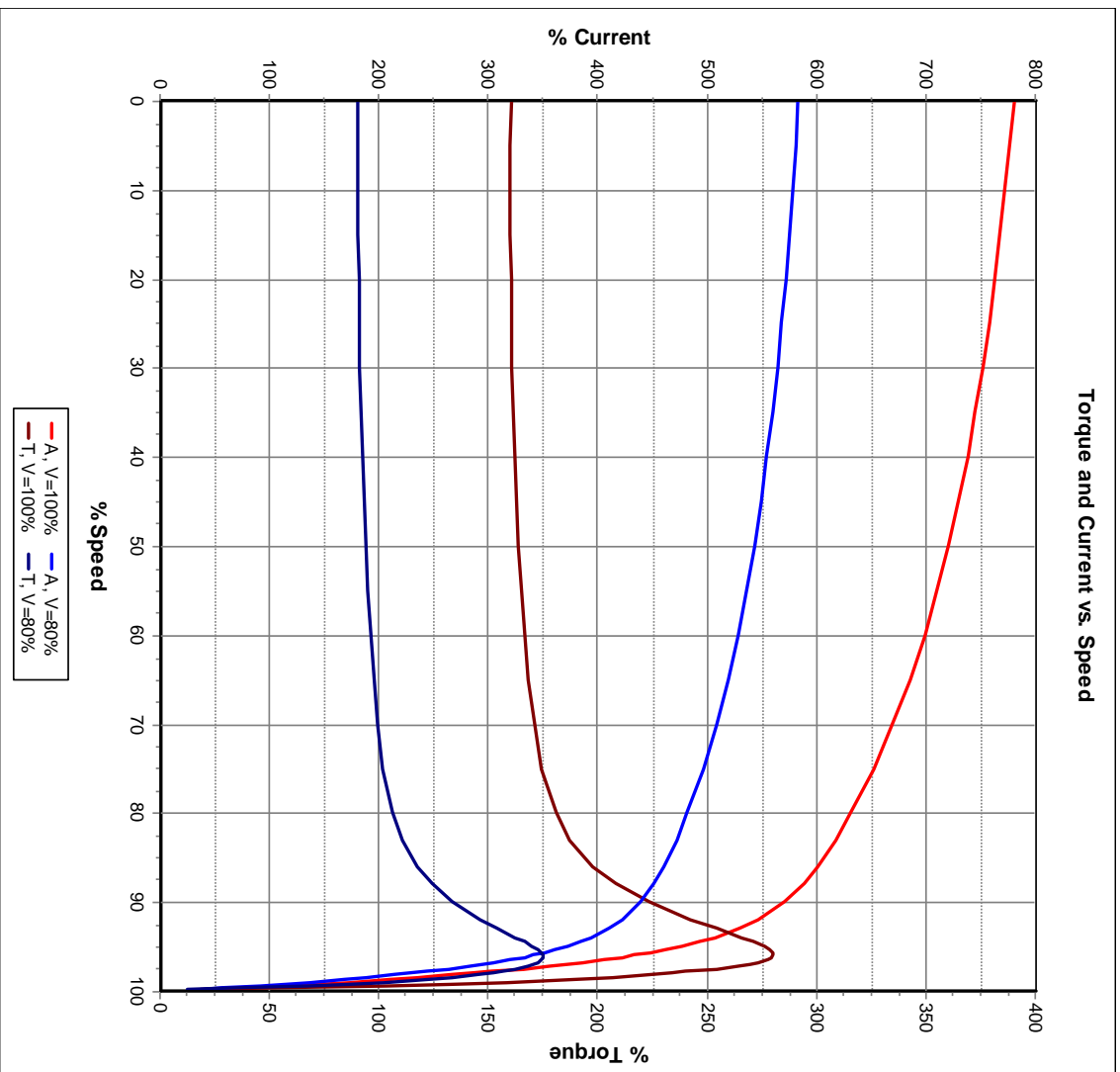
Motors & Generators Visiting Address
Strömbergin puistitie 5 A
VAASA
FINLAND

ABB Oy
Postal Address
P.O.Box 633
FI-65101 VAASA
FINLAND

Telephone +358 10 222 000
Telefax +358 10 224 7372

ABB Oy		Classifying code or document type		PERFORMANCE DATA OF MOTOR			
Motors & Generators							
Department/Author	MLA000/TISA	Date of Issue	12.3.2018	Lang.	En	Our ref.	TMAA-ASUG9J-TISA24
Customer ref.				Rev. date		Rev./Changed by	TMAA-ASUG9J-TISA24 A
				Saving Ident			Pages
							2/3

Motor type code: M3BN 586 SMC 8G			
Rated output	300 HP	Power Factor	0,79
Voltage	460 V	Rated torque	1765 lb-ft
Frequency	60 Hz	Locked rotor Amps	780 %
Speed	893 r/min	Locked rotor torque	160 %
Current	379 Amps	Breakdown torque	280 %




Motors & Generators Visiting Address
 Strömbergin puistitie 5 A
 VAASA
 FINLAND

ABB Oy
 Postal Address
 P.O. Box 633
 FI-65101 VAASA
 FINLAND

Telephone
 +358 10 222 000

Telefax
 +358 10 224 7372

ABB Oy Motors & Generators		Classifying code or document type		PERFORMANCE DATA OF MOTOR			
Department/Author MLA000/TISA	Date of Issue 12.3.2018	Lang. EN	Rev. date	Our ref. TMAA-ASUG9J-TISA24	Rev./Changed by A	Pages 3/3	
Customer ref.			Saving Ident TMAA-ASUG9J-TISA24				

PWM
Switch. freq. 3KHz
FWP 460VD 60Hz
VSD-Duty Temp. rise class F

Drive1	
Rated power	75 HP
Rated voltage	118 V
Nominal frequency	15.4 Hz
Type of connection	Delta
Rated torque	1752 lb-ft
Speed	225 rpm
Current	373 Amps

Drive2	
Rated power	300 HP
Rated voltage	460 V
Nominal frequency	60.5 Hz
Type of connection	Delta
Rated torque	1752 lb-ft
Speed	900 rpm
Current	402 Amps

Constant torque 225 – 900rpm

Motors & Generators Visiting Address
Strömbergin puistitie 5 A
VAASA
FINLAND

ABB Oy
Postal Address
P.O.Box 633
FI-65101 VAASA
FINLAND

Telephone +358 10 222 000
Telefax +358 10 224 7372