

BALDOR® • RELIANCE

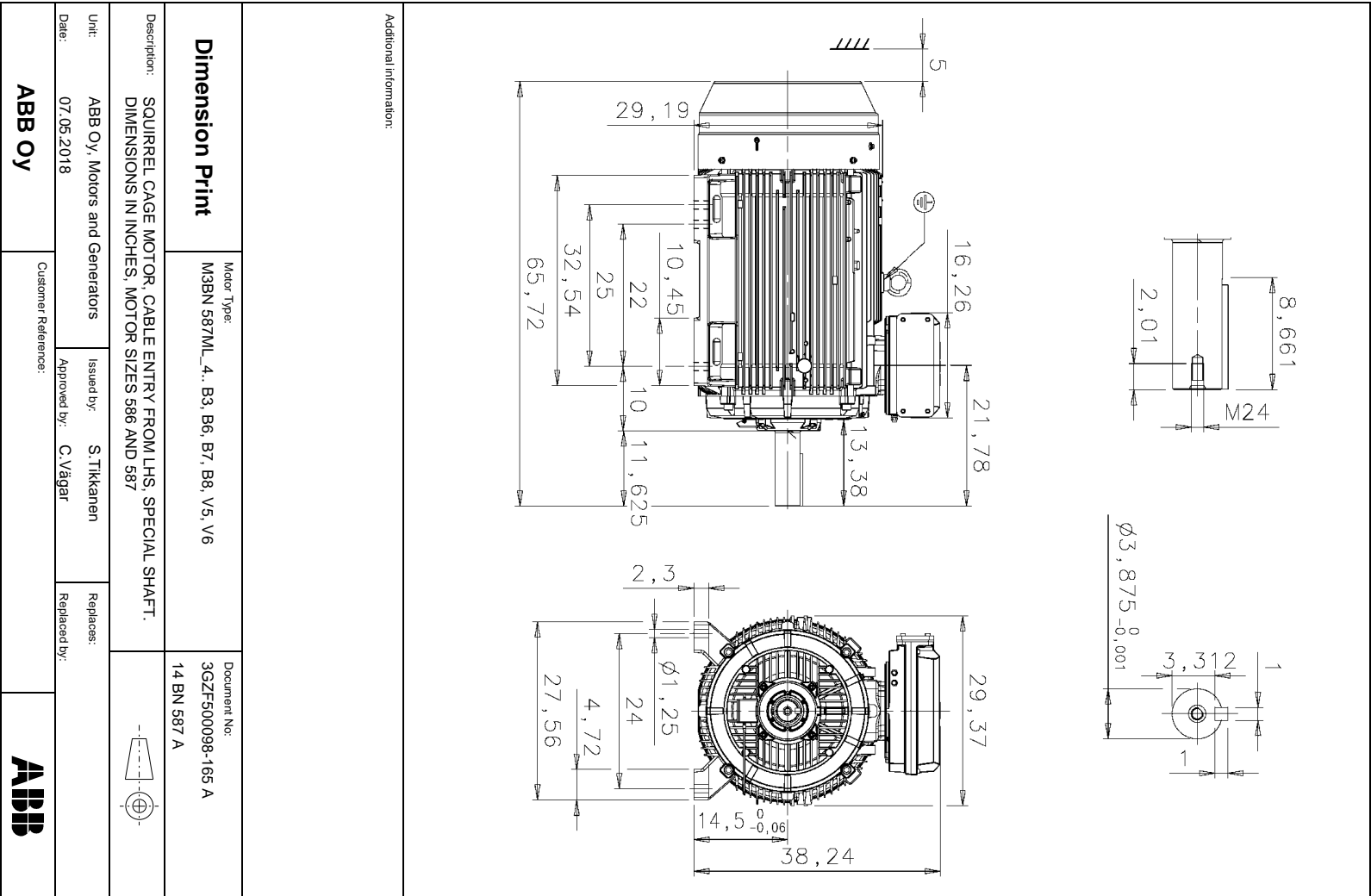
Product Information Packet

ECR583508-PP

M3BN 587MLB 8P B3 350HP

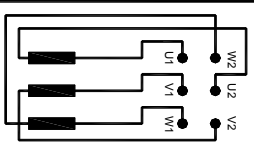
Specs			
Frame:	58		
Output @ Frequency:	350.00 KW @ 60 HZ		
Synchronous Speed @ Frequency:	900 RPM @ 60 HZ		
Voltage @ Frequency:	460 V @ 60 HZ		
	575 V @ 60 HZ		
Duty Rating:	S1		
Insulation Class:	F		
IP Rating:	IP55		
Speed Code:	Single Speed		
Motor Standards:	NEMA		

Starting Method:	Full Voltage		
-------------------------	--------------	--	--



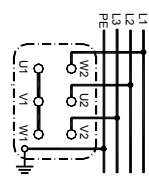
<h2 style="margin: 0;">Connection Diagram</h2>		Document No: 3GZF321100-1 E
Description: 3-PHASE SQUIRREL-CAGE MOTOR		
Unit: Motors Date: 21.09.2005	Issued by: M Prusi Approved by: Jari Raittila	Replaces: Replaced by:
Customer Reference: ABB Oy		

Diagram of connection
 Anschluss-Schema
 Schema de branchement

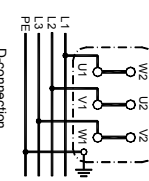


Connection of terminals
 Branchement des bornes


Y-connection
 Y-Schaltung
 Connection étoile




D-connection
 D-Schaltung
 Connection triangle




Direction of rotation with phase sequence shown in picture
 Drehrichtung nach Schaltbild
 Direction de rotation avec branchement ci-dessus



Direction of rotation with reversed phase sequence
 Drehrichtung mit umgekehrter Phasenfolge
 Direction de rotation avec séquence de phase inversée



Motor No Machine Nr No du moteur ABB Oy, Motors	3GZF321100-1 E
---	----------------

		Classifying code or document type	
ABB Oy		PERFORMANCE DATA OF MOTOR	
Motors & Generators			
Department/Author MLA000/TISA	Date of Issue 12.3.2018	Lang. En	Rev. date TMAA-ASUG9J-TISA25
Customer ref.		Saving Ident TMAA-ASUG9J-TISA25	Rev./Changed by A
			Pages 1/3

Driven Motor:

Motor type code	M3BN 587 MLB 8G			
Motor product code	3GBN984420-ADG (+209)			
Motor type	Squirrel cage Motor			
Mounting designation	IM 1001			
Protected by enclosure	TEFC			
Method of cooling	TEFC			
Insulation	Class F (Shock Resistant)			
Service factor	SF1.15 TEMP RISE CLASS F			
Standards	NEMA			
Ambient temperature, max.	40 °C			
Altitude, max.	3280 ft.a.s.l.			
Duty type	Continuous			
Temp. rise	Class B			
Connection of stator winding	Delta			
Rated output	350 HP			
Voltage	460 V			
Frequency	60 Hz			
Speed	894 r/min			
Current	436 Amps			
Locked rotor Amps	780 %			
Locked rotor torque	180 %			
Breakdown torque	300 %			
No load current	204 Amps			
Rated torque	2056 lb-ft			
Load characteristics				
	Load %	Current Amps	Efficiency %	Power Factor
	100	436	95,2	0,79
	75	354	95,1	0,73
	50	281	94,2	0,62

Typical calculated values to NEMA. -

Motors & Generators Visiting Address
Strömbergin puistitie 5 A
VAASA
FINLAND

ABB Oy
Postal Address
P.O.Box 633
FI-65101 VAASA
FINLAND

Telephone +358 10 222 000
Telefax +358 10 224 7372

Classifying code or document type
PERFORMANCE DATA OF MOTOR



ABB Oy
Motors & Generators

Department/Author
 ML/A000/TISA

Date of Issue
 12.3.2018

Lang
 EN

Rev. date

Our ref.
 TMAA-ASUG9J-TISA25

Rev./Changed by
 A

Pages
 2/3

Customer ref.

Saving Ident
 TMAA-ASUG9J-TISA25

Motor type code: M3BN 587 MLB 8G

Rated output 350 HP
 Voltage 460 V
 Frequency 60 Hz
 Speed 894 r/min
 Current 436 Amps

Power Factor 0,79
 Rated torque 2056 lb-ft
 Locked rotor Amps 780 %
 Locked rotor torque 180 %
 Breakdown torque 300 %

Torque and Current vs. Speed

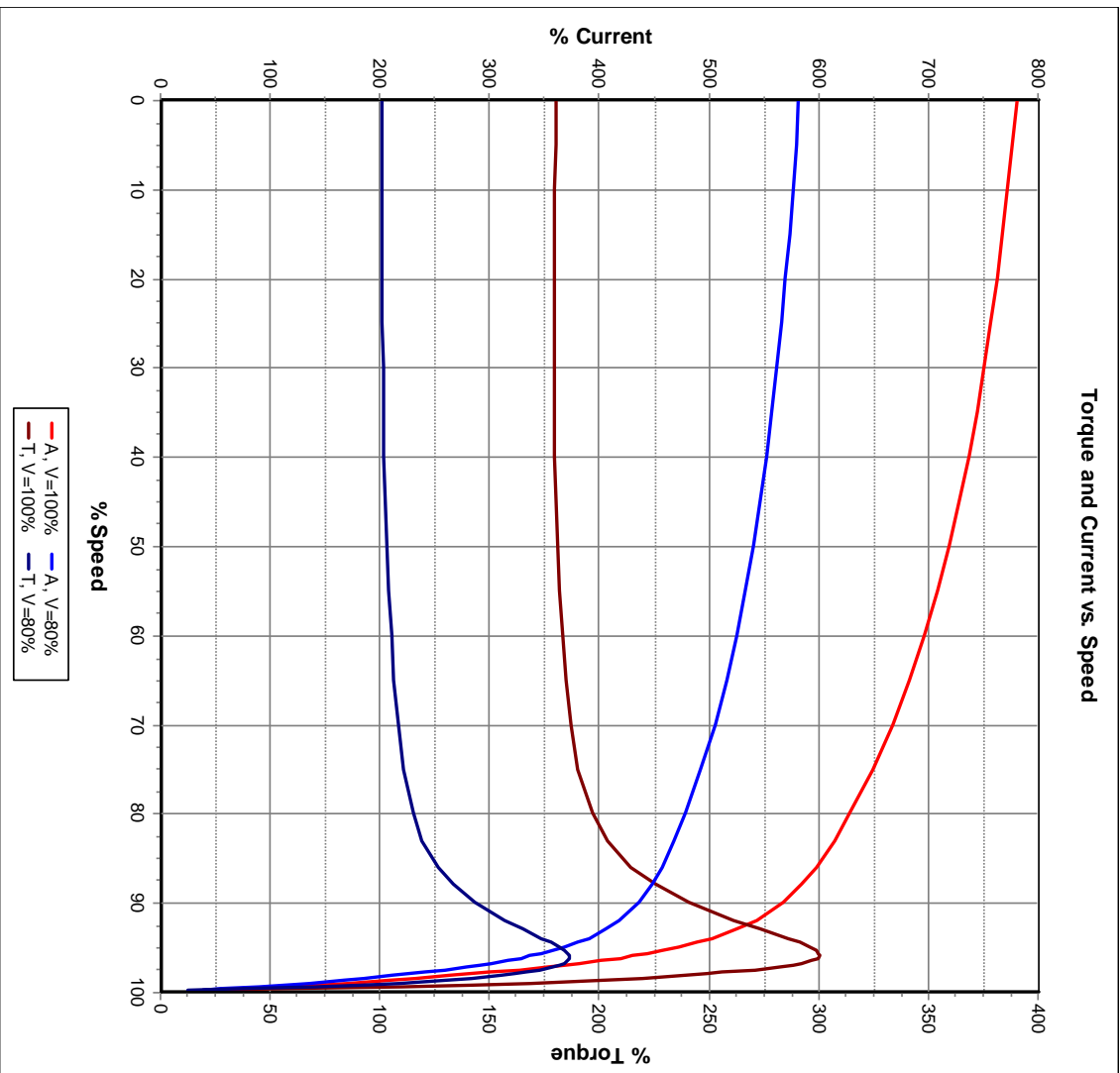



ABB Oy

Motors & Generators
 Visiting Address
 Strömbergin puistitie 5 A
 VAASA
 FINLAND

Postal Address
 P.O. Box 633
 FI-65101 VAASA
 FINLAND

Telephone
 +358 10 222 000

Telefax
 +358 10 224 7372

ABB Oy Motors & Generators		Classifying code or document type		PERFORMANCE DATA OF MOTOR		
Department/Author MLA000/TISA	Date of Issue 12.3.2018	Lang. EN	Rev. date TMAA-ASUG9J-TISA25			
Customer ref.			Saving Ident TMAA-ASUG9J-TISA25	Rev./Changed by A	Pages 3/3	

PWM
Switch. freq. 3KHz
FWP 460VD 60Hz
VSD-Duty Temp. rise class F

Drive1	
Rated power	87,5 HP
Rated voltage	118 V
Nominal frequency	15,4 Hz
Type of connection	Delta
Rated torque	2042 lb-ft
Speed	225 rpm
Current	438 Amps

Drive2	
Rated power	350 HP
Rated voltage	460 V
Nominal frequency	60,5 Hz
Type of connection	Delta
Rated torque	2042 lb-ft
Speed	900 rpm
Current	468 Amps

Constant torque 225 – 900rpm

Motors & Generators Visiting Address
Strömbergin puistitie 5 A
VAASA
FINLAND

ABB Oy
Postal Address
P.O.Box 633
FI-65101 VAASA
FINLAND

Telephone +358 10 222 000
Telefax +358 10 224 7372