

BALDOR • RELIANCE

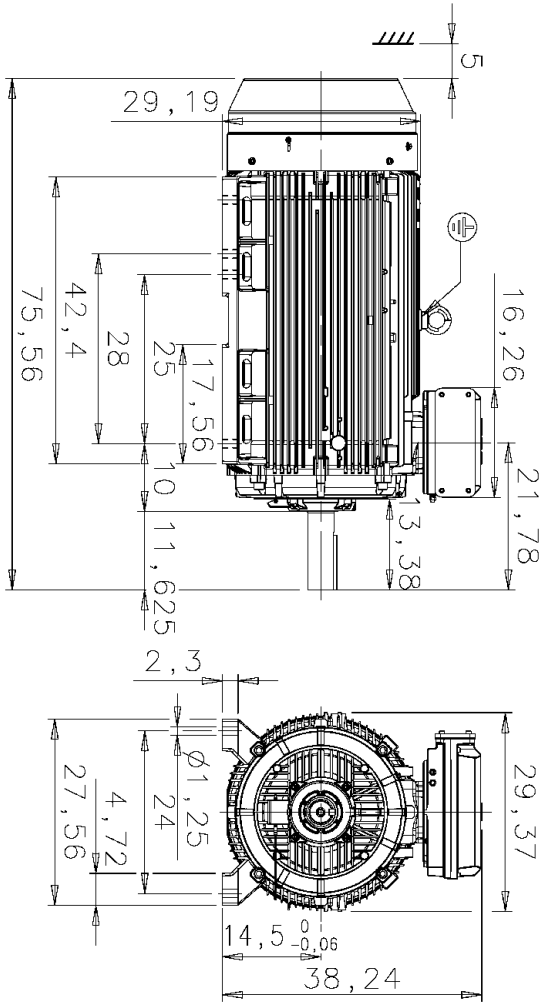
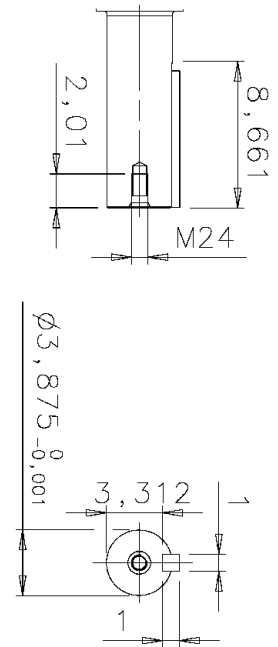
Product Information Packet

ECR584508-PP

M3BN 588LKB 8P B3 450HP

Specs			
Frame:	58		
Output @ Frequency:	450.00 KW @ 60 HZ		
Synchronous Speed @ Frequency:	900 RPM @ 60 HZ		
Voltage @ Frequency:	460 V @ 60 HZ		
	575 V @ 60 HZ		
Duty Rating:	S1		
Insulation Class:	F		
IP Rating:	IP55		
Speed Code:	Single Speed		
Motor Standards:	NEMA		

Starting Method:	Full Voltage		
-------------------------	--------------	--	--



Additional information:

Dimension Print		Motor Type:	M3BN 588LK_4.. B3, B6, B7, B8, V5, V6	Document No:	3GZF500098-167 A
Description:		SQUIRREL CAGE MOTOR, CABLE ENTRY FROM LHS, SPECIAL SHAFT. DIMENSIONS IN INCHES, MOTOR SIZES 587 AND 588			
Unit:	ABB Oy, Motors and Generators	Issued by:	S. Tikkanen	Replaces:	14 BN 588 A
Date:	07.05.2018	Approved by:	C. Väggar	Replaced by:	
Customer Reference:		ABB Oy			



<h2 style="margin: 0;">Connection Diagram</h2>		Document No: 3GZF321100-1 E
Description: 3-PHASE SQUIRREL-CAGE MOTOR		
Unit: Motors Date: 21.09.2005	Issued by: M Prusi Approved by: Jari Raittila	Replaces: Replaced by:
Customer Reference: ABB Oy		


Diagram of connection
Anschluss-Schema
Schema de branchement

Connection of terminals
Anschluss des Motors
Branchement des bornes

Direction of rotation with phase sequence shown in picture
Drehrichtung nach Schaltbild
Direction de rotation avec branchement ci-dessus

Direction of rotation with reversed phase sequence
Drehrichtung mit umgekehrter Phasenfolge
Direction de rotation avec séquence de phase inversée

Motor No Machine Nr No du moteur ABB Oy, Motors	3GZF321100-1 E
---	-----------------------

ABB Oy Motors & Generators		Classifying code or document type		PERFORMANCE DATA OF MOTOR		
Department/Author MLA000/TISA	Date of Issue 16.3.2018	Lang. En	Rev. date TMAA-ASUG9J-TISA27			
Customer ref.			Saving Ident TMAA-ASUG9J-TISA27	Rev./Changed by A	Pages 1/3	

Driven Motor:

Motor type code	M3BN 588 LKB 8G			
Motor product code	3GBN984820-ADG			
Motor type	Squirrel cage Motor			
Mounting designation	IM1001			
Protected by enclosure	TEFC			
Method of cooling	TEFC			
Insulation	Class F (Shock Resistant)			
Service factor	SF1.15 TEMP RISE CLASS F			
Standards	NEMA			
Ambient temperature, max.	40 °C			
Altitude, max.	3280 ft.a.s.l.			
Duty type	Continuous			
Temp. rise	Class B			
Connection of stator winding	Delta			
Rated output	450 HP			
Voltage	460 V			
Frequency	60 Hz			
Speed	894 r/min			
Current	559 Amps			
Locked rotor Amps	780 %	Code J		
Locked rotor torque	150 %			
Breakdown torque	300 %			
No load current	263 Amps			
Rated torque	2648 lb-ft			
Load characteristics	Load %	Current Amps	Efficiency %	Power Factor
	100	555	95.0	0.79
	75	456	94.9	0.73
	50	367	94.1	0.61

Typical calculated values to NEMA. -

Motors & Generators Visiting Address
Strömbergin puistitie 5 A
VAASA
FINLAND

ABB Oy
Postal Address
P.O.Box 633
FI-65101 VAASA
FINLAND

Telephone
+358 10 222 000

Telefax
+358 10 224 7372

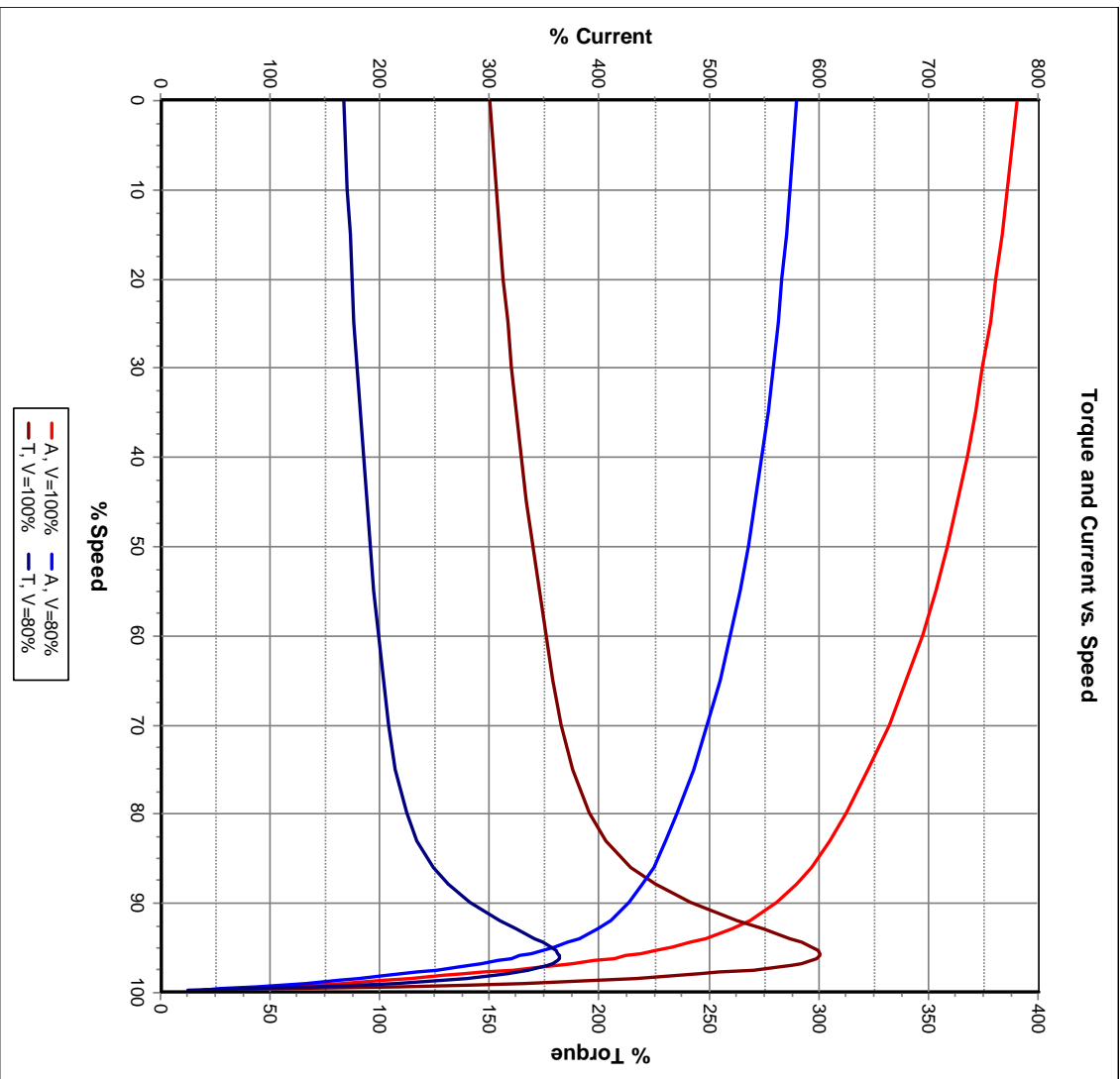
Classifying code or document type
PERFORMANCE DATA OF MOTOR



ABB Oy
Motors & Generators

Department/Author MLA000/TISA	Date of Issue 16.3.2018	Lang. En	Rev. date TMAA-ASUG9J-TISA27	Our ref. TMAA-ASUG9J-TISA27
Customer ref.			Saving Ident TMAA-ASUG9J-TISA27	Rev./Changed by A
				Pages 2/3

Motor type code: M3BN 588 LKB 8G	
Rated output	450 HP
Voltage	460 V
Frequency	60 Hz
Speed	894 r/min
Current	559 Amps
Power Factor	0.79
Rated torque	2648 lb-ft
Locked rotor Amps	780 %
Locked rotor torque	150 %
Breakdown torque	300 %




Motors & Generators
 Visiting Address
 Strömbergin puistitie 5 A
 VAASA
 FINLAND

ABB Oy
 Postal Address
 P.O. Box 633
 FI-65101 VAASA
 FINLAND

Telephone
 +358 10 222 000

Telefax
 +358 10 224 7372

We reserve all rights in this document and in the information contained therein. Reproduction, use or disclosure to third parties without express authority is strictly forbidden.
 ©Copyright 2013 ABB

ABB Oy Motors & Generators		Classifying code or document type		PERFORMANCE DATA OF MOTOR		
Department/Author MLA000/TISA	Date of Issue 16.3.2018	Lang. EN	Rev. date TMAA-ASUG9J-TISA27			
Customer ref.			Saving Ident TMAA-ASUG9J-TISA27	Rev./Changed by A	Pages 3/3	

PWM
Switch. freq. 3KHz
FWP 460VD 60Hz
VSD-Duty Temp. rise class F

Drive1	
Rated power	112.5 HP
Rated voltage	118 V
Nominal frequency	15.4 Hz
Type of connection	Delta
Rated torque	2629 lb-ft
Speed	225 rpm
Current	563 Amps

Drive2	
Rated power	450 HP
Rated voltage	460 V
Nominal frequency	60.5 Hz
Type of connection	Delta
Rated torque	2629 lb-ft
Speed	900 rpm
Current	600 Amps

Constant torque 225 – 900rpm

Motors & Generators Visiting Address
Strömbergin puistitie 5 A
VAASA
FINLAND

ABB Oy
Postal Address
P.O.Box 633
FI-65101 VAASA
FINLAND

Telephone +358 10 222 000
Telefax +358 10 224 7372