

BALDOR • RELIANCE

Customer information packet

ECR9506TR

50HP, 1180RPM, 3PH, 60HZ, 365T, A3668M, TEFC, F

Class - None

Division - Not Applicable

Specifications

| | |
|-------------------------------|---|
| Enclosure | TEFC |
| Frame | 365T |
| Frame Material | Iron |
| Frequency | 60.00 Hz |
| Motor Letter Type | Three Phase |
| Output @ Frequency | 50.000 HP @ 60 HZ |
| Phase | 3 |
| Synchronous Speed @ Frequency | 1200 RPM @ 60 HZ |
| Voltage @ Frequency | 230.0 V @ 60 HZ 460.0 V @ 60 HZ |
| XP Class and Group | None |
| XP Division | Not Applicable |
| Agency Approvals | CCSAUSEEV NEMA PREMIUM NEMA_PREMIUM UR |
| Ambient Temperature | 40 °C |
| Auxillary Box | No Auxillary Box |
| Base Indicator | Rigid |
| Bearing Grease Type | Mobil SHC 220 (Athens Only) |
| Constant Torque Speed Range | 6-60 |
| Current @ Voltage | 61.900 A @ 460.0 V 124.000 A @ 230.0 V |
| Design Code | A |
| Drip Cover | No Drip Cover |
| Duty Rating | CONT |
| Efficiency @ 100% Load | 94.1 % |
| Feedback Device | NO FEEDBACK |
| Heater Indicator | No Heater |
| High Voltage Full Load Amps | 61.9 a |
| Insulation Class | F |
| Inverter Code | Inverter Ready |

Part detail

| | |
|--------------|------------|
| Revision | M |
| Type | AC |
| Mech. spec. | |
| Base | |
| Status | PRD/A |
| Elec. spec. | A36WG3910 |
| Layout | 617428-034 |
| Eff. date | 11-01-2021 |
| CD Diagram | 416820-002 |
| Poles | 06 |
| Leads | 9#4 |
| Proprietary | False |
| Created date | 02-02-2015 |

| | |
|--------------------------------------|--------------------|
| KVA Code | G |
| Lifting Lugs | No Lifting Lugs |
| Max Speed | 2700 rpm |
| Motor Lead Quantity/Wire Size | 9 @ 4 AWG |
| Motor Standards | NEMA |
| Motor Type | A3668M |
| Mounting Arrangement | F1 |
| Number of Poles | 6 |
| Overall Length | 33.49 IN |
| Power Factor | 80 |
| Product Family | Crusher / Chipper |
| Pulley End Bearing Type | Roller |
| Pulley Face Code | Standard |
| Service Factor | 1.25 |
| Shaft Diameter | 2.374 IN |
| Shaft Ground Indicator | No Shaft Grounding |
| Shaft Rotation | Reversible |
| Shaft Slinger Indicator | No Slinger |
| Speed | 1180 rpm |
| Speed Code | Single Speed |
| Starting Method | Direct on line |
| Thermal Device - Bearing | None |
| Thermal Device - Winding | None |

Nameplate

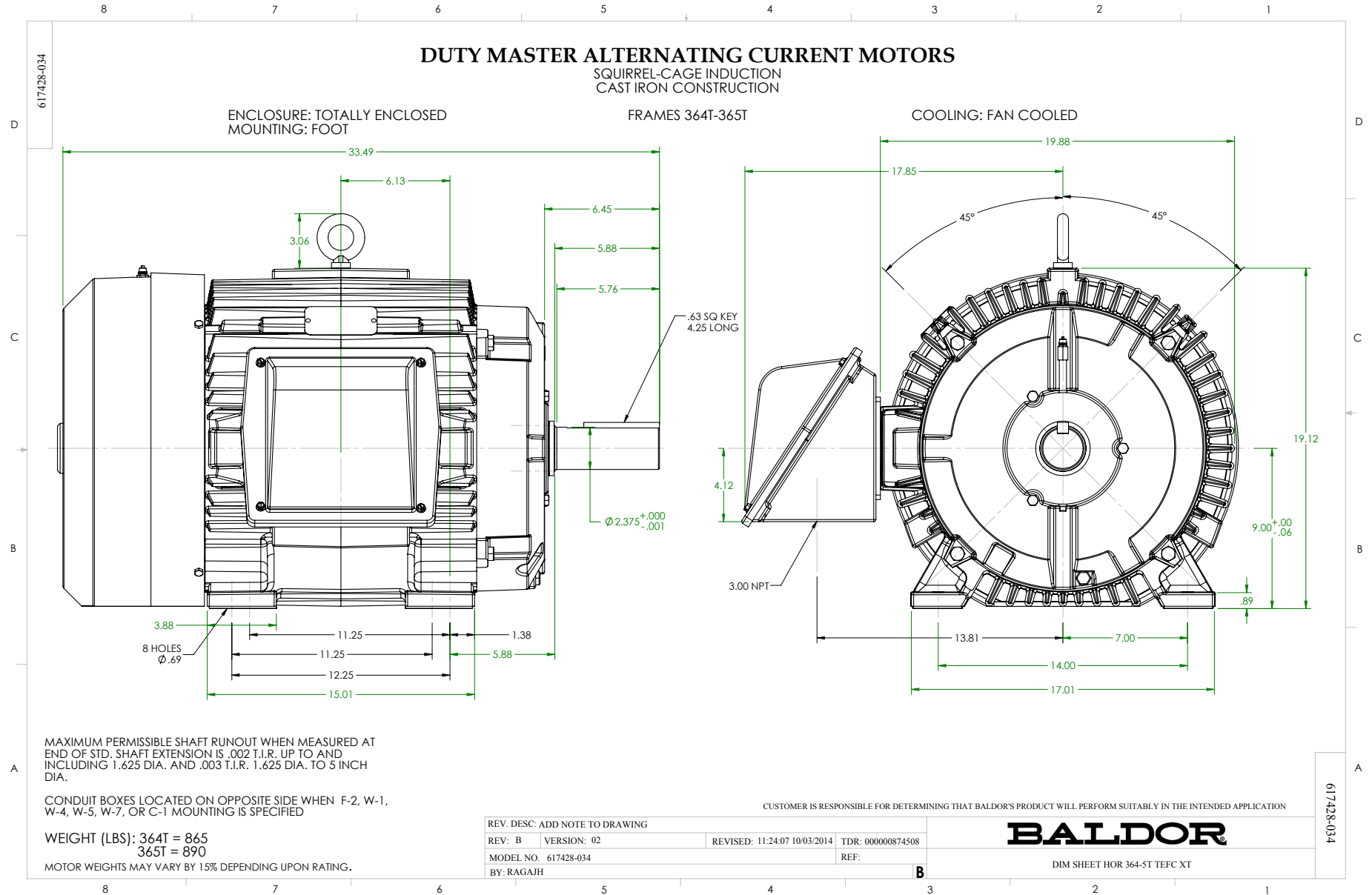
NP3980LUA

| | | | | | | | | | | | | | |
|------------------|----------------------------|-------------------|---------------|----------------------|-------------|-----------------------|-------------|------------|------------|------------|----------------------|-----------|-------|
| CAT # | ECR9506TR | | SER | | | CC | 010A | | | | | | |
| SPEC | P36G3501 | | RATING | 40C AMB-CONT | | | | | | | | | |
| HZ | VOLTS | | AMPS | | RPM | HP | CODE | SF | DES | PF | NEMA NOM. EFF | | |
| 60 | 230/460 | | 124/61.9 | | 1180 | 50 | G | 1.25 | A | 80 % | 94.1 % | | |
| | - | | | | | | | | | % | | % | |
| PH | 3 | CL | F | MAX CORR KVAR | 15.4 | USABLE AT 208V | | 136 | A | | | | |
| BRG | DE | NU313 | ODE | 6313 | ENCL | TEFC | FR | 365T | | 55 | | | |
| GREASE | MOBIL SHC 220 | | | | | MTR WT | 923 | LBS | | | | | |
| USABLE AT | 50HZ 40HP 190/380V 120/60A | | | | | SF1.0 | | | | | | | |
| INV READY | 1.0 SF VPWM | CT | 10-60 | HZ | 6:1 | VT | 0-60 | HZ | 1000:1 | CHP | 60-90 | HZ | 1.5:1 |
| MAX RPM | 2700 | SFA 152/76 | | | | | | | | | | | |

Parts list

| Part number | Description | Quantity |
|-------------|---|----------|
| SA293587 | SA P36G3501 | 1.000 ea |
| RA279680 | RA P36G3501 | 1.000 ea |
| NP3980LUA | SS CRUSHER UR CSA-C-US-EEV NEMA PREM CC | 1.000 ea |
| 000692000VD | LABEL WARNING | 1.000 ea |
| 032018008AK | HHCS 1/4-20X1 PLATED | 4.000 ea |
| 032018012DK | HHCS 1/2-13X1-1/2 PLTD. 032018012DR | 4.000 ea |
| 032018024CK | HHCS 3/8-16X3 PLTD. | 3.000 ea |
| 034180012DA | KEY 1X4X1/4X1-1/2 L | 1.000 ea |
| 034530052AB | P/NIP 1/8X6-1/2 Zinc | 1.000 ea |
| 078550001M | FAN KB 60/30 (30) 360 | 1.000 ea |
| 078559034A | +F/C A 078559001A - 360 | 1.000 ea |
| 085922073B | BRKT 360 085922072WCC KB | 1.000 ea |
| 415045002E | SLGR | 1.000 ea |
| 415072001B | CLAMP | 1.000 ea |
| 415096002A | CPLG 1/8 HEX TYPE | 1.000 ea |
| 412118006A | DRAIN | 1.000 ea |
| 032018012DK | HHCS 1/2-13X1-1/2 PLTD. 032018012DR | 4.000 ea |
| 032018024CK | HHCS 3/8-16X3 PLTD. | 3.000 ea |
| 034530020AB | P/NIP 1/8X2-1/2 PLTED | 1.000 ea |
| 085922073B | BRKT 360 085922072WCC KB | 1.000 ea |
| 415045002E | SLGR | 1.000 ea |
| 415096002A | CPLG 1/8 HEX TYPE | 1.000 ea |
| 412118006A | DRAIN | 1.000 ea |
| 032018010CK | HHCS 3/8-16X1-1/4 PLTD. 032018010CR | 4.000 ea |
| 033512008LB | HHTTS 1/4-20X1 PLATED | 4.000 ea |
| 034000014AB | WSH ID.406 OD.812 TH.065 | 4.000 ea |
| 035000001A | ALFTG 1/8" 1610-BL | 1.000 ea |
| 035000001A | ALFTG 1/8" 1610-BL | 1.000 ea |
| 065776000C | GASKET,MAIN CBOX, 320-400 | 1.000 ea |
| 067053000B | GASK 320-400 | 1.000 ea |
| 076708000BB | CONDUIT BOX-360 | 1.000 ea |

| | | |
|-------------|--|----------|
| 076709000A | C/B Cover - 360 | 1.000 ea |
| 406099000A | PLUG - FAN COVER 320-440 | 1.000 ea |
| 415000115H | T/LUG #2AWG-4/0AWG | 1.000 ea |
| 418150003A | GREASE FITTING CAP | 1.000 ea |
| 418150003A | GREASE FITTING CAP | 1.000 ea |
| 033775004EA | DRSCR #6-1/4 304 S.S. | 4.000 ea |
| 034180034HA | KEY 5/8X5/8X4-1/4 L | 1.000 ea |
| MG1025G96 | WILKOFASG SG, 779.7048, MOUSE GRAY #7048 | 0.250 ga |
| 421948032 | LABEL, MYLAR | 1.000 ea |
| 004824015AP | GREASE MOBILITH SHC 220 | 0.540 lb |
| 000692000RT | N/P | 1.000 ea |
| 047174001Z | EXT SNAP RING | 1.000 ea |
| 000613006PU | N/P (RELEASE QTY 10,000) UL CSA LABEL | 1.000 ea |
| 034001016AB | WSHR .562ID 1.375OD .109 | 1.000 ea |
| 034001014AB | FLAT WASHER 3/8"PLATED | 1.000 ea |
| 415070001A | RUBBER MOUNT 3X3X1 THICK | 1.000 ea |
| 032018024CK | HHCS 3/8-16X3 PLTD. | 1.000 ea |
| 032509020C | CARRIAGE BOLT - 360 | 3.000 ea |
| 604797011R | 320 FR. ROLLER BEARING MOTOR SHAFT | 1.000 ea |
| HW1000A32 | 5/16 FL WASHER WIDE, ID=.344, OD=1.125 | 3.000 ea |
| 034530032BB | P/NIP 1/4X4" SCHED 40 | 1.000 ea |
| 034631002AB | BUSH 1/4 TO 1/8 PLTD. | 1.000 ea |
| 035000001G | GREASE RELIEF FITTING, ALEMITE 317400 | 1.000 ea |
| 034631002AB | BUSH 1/4 TO 1/8 PLTD. | 1.000 ea |
| 034530020BB | P/NIP 1/4X2-1/2 PLATED | 1.000 ea |
| 035000001G | GREASE RELIEF FITTING, ALEMITE 317400 | 1.000 ea |
| 14PA1000 | PACKAGING 314 GROUP COMBINED PRINT | 1.000 ea |
| 032018005DL | 1/2-13 X 5/8 SILICON BRONZE HHCS | 1.000 ea |



416820-002

A-C MOTOR
 CONNECTION DIAGRAM
 STANDARD 9 LEAD DELTA-CONNECTED



(N.P. 1575-B)

416820-002

| | | |
|---|------------------------------|-------------------|
| REV. DESC: FONT CHANGE FOR PDF SEARCHABLE | | |
| REV. LTR: A | VERSION: 01 | TDR: 000001009382 |
| FILE: \MGA\00000\661 | REVISED: 02:46:19 02/13/2020 | BY: MGHMTT |
| MTL: - | | © □ |

BALDOR - RELIANCE®

CONN DIAG - STANDARD 9 LEAD, DELTA-CONNECTED

SH 1 of 1