

BALDOR® • RELIANCE 

Product Information Packet

EHF2531T

25HP, 1775RPM, 3PH, 60HZ, 284T, 4050M, OPSB, F2

Part Detail							
Revision:	A	Status:	PRD/A	Change #:		Proprietary:	No
Type:	AC	Elec. Spec:	40WGX806	CD Diagram:	CD0005	Mfg Plant:	
Mech. Spec:	40J100	Layout:	40LYJ100	Poles:	04	Created Date:	02-10-2021
Base:	RG	Eff. Date:	01-31-2022	Leads:	9#10		

Specs			
Catalog Number:	EHFM2531T	Inverter Code:	Inverter Ready
Enclosure:	OPSB	KVA Code:	G
Frame:	284T	Lifting Lugs:	Standard Lifting Lugs
Frame Material:	Steel	Locked Bearing Indicator:	No Locked Bearing
Output @ Frequency:	25.000 HP @ 60 HZ	Motor Lead Quantity/Wire Size:	9 @ 10 AWG
Synchronous Speed @ Frequency:	1800 RPM @ 60 HZ	Motor Lead Exit:	Ko Box
Voltage @ Frequency:	230.0 V @ 60 HZ	Motor Lead Termination:	Flying Leads
	460.0 V @ 60 HZ	Motor Type:	4050M
Agency Approvals:	CSA	Mounting Arrangement:	F2
	UR	Power Factor:	82
Auxillary Box:	No Auxillary Box	Product Family:	General Purpose
Auxillary Box Lead Termination:	None	Pulley End Bearing Type:	Ball
Base Indicator:	Rigid	Pulley Face Code:	Standard
Bearing Grease Type:	Polyrex EM (-20F +300F)	Pulley Shaft Indicator:	Standard
Blower:	None	Rodent Screen:	None
Current @ Voltage:	30.000 A @ 460.0 V	Shaft Extension Location:	Pulley End
	60.000 A @ 230.0 V	Shaft Ground Indicator:	No Shaft Grounding
	64.000 A @ 208.0 V	Shaft Rotation:	Reversible

Design Code:	A	Shaft Slinger Indicator:	No Slinger
Drip Cover:	No Drip Cover	Speed Code:	Single Speed
Duty Rating:	CONT	Motor Standards:	NEMA
Electrically Isolated Bearing:	Not Electrically Isolated	Starting Method:	Direct on line
Feedback Device:	NO FEEDBACK	Thermal Device - Bearing:	None
Front Face Code:	Standard	Thermal Device - Winding:	None
Front Shaft Indicator:	None	Vibration Sensor Indicator:	No Vibration Sensor
Heater Indicator:	No Heater	Winding Thermal 1:	None
Insulation Class:	F	Winding Thermal 2:	None

Nameplate NP2094E06B03										
CAT.NO.	EHFM2531T									
SPEC.	40J100X806G1									
HP	25									
VOLTS	230/460									
AMPS	60/30									
RPM	1775									
FRAME	284T			HZ 60			PH 3			
SER.F.	1.15		CODE	G		DES	A		CL	F
NEMA-NOM-EFF	93.6		PF	82						
RATING	40C AMB-CONT									
CC	010A			USABLE AT 208V			64			
DE	6311			ODE	6309					
AUTO				MANUAL			NONE			
ENCL	OPSB			SN						
BLANK										

Parts List		
Part Number	Description	Quantity
SA390486	SA 40J100X806G1	1.000 EA
RA380937	RA 40J100X806G1	1.000 EA
HA6361A01	LIFTING LUG FOR 37, 39 & 40 FRAME ZINC	2.000 EA
40CB4000A01	CONDUIT BOX 40, STAMPED	1.000 EA
51XF2520A08	SCREW, HEX SER SLT HD, ZN 1/4-20 X .50 L	2.000 EA
WD1000B16	T&B CX70TN OR L70P TERMINAL LUG	1.000 EA
40EP3200A02	STD FREP OPEN 309 BRG	1.000 EA
HW5100A11	W3917-042 WVY WSHR (WB)	1.000 EA
40EP3200B31	PUEP OPEN 311 BRG W/SH GND MTG	1.000 EA
84XN0540J08	5-40 X 1/2" SHCS, BLACK OXIDE	2.000 EA
XY3816A12	3/8-16 FINISHED NUT	8.000 EA
39CB4500A01	CONDUIT BOX LID 39, STAMPED, W/ PRIMER	1.000 EA
51XF2520A08	SCREW, HEX SER SLT HD, ZN 1/4-20 X .50 L	2.000 EA
HW2501H28	KEY, 1/2 SQ X 3.250	1.000 EA
HW4500A20	1/8NPT SL PIPE PLUG	2.000 EA
40AD2002A01	LEXAN BAFFLE 40 FR OPEN	1.000 EA
MJ1000A02	GREASE, MOBIL POLYREX EM - 124047	0.050 LB
HW4500A20	1/8NPT SL PIPE PLUG	2.000 EA
40AD2002A01	LEXAN BAFFLE 40 FR OPEN	1.000 EA
HA3154A04	THRUBOLT STUD 3/8-16 X 18.750	4.000 EA
MG1000G27	MED CHARCOAL METALLIC GREY 400-0096	0.070 GA
MN416A01	TAG-INSTAL-MAINT no wire (2100/bx) 4/22	1.000 EA
LC0005	CONN.DIA.,TY M,9-LD,DUAL VOLT,REVERSING	1.000 EA
NP2094E06B03	NP LABEL W/BARCODE (PREM EFF HVAC MTR)	1.000 EA

Parts List (continued)		
Part Number	Description	Quantity
40PA1000	PACKAGING GROUP	1.000 EA

AC Induction Motor Performance Data

Record # 86783

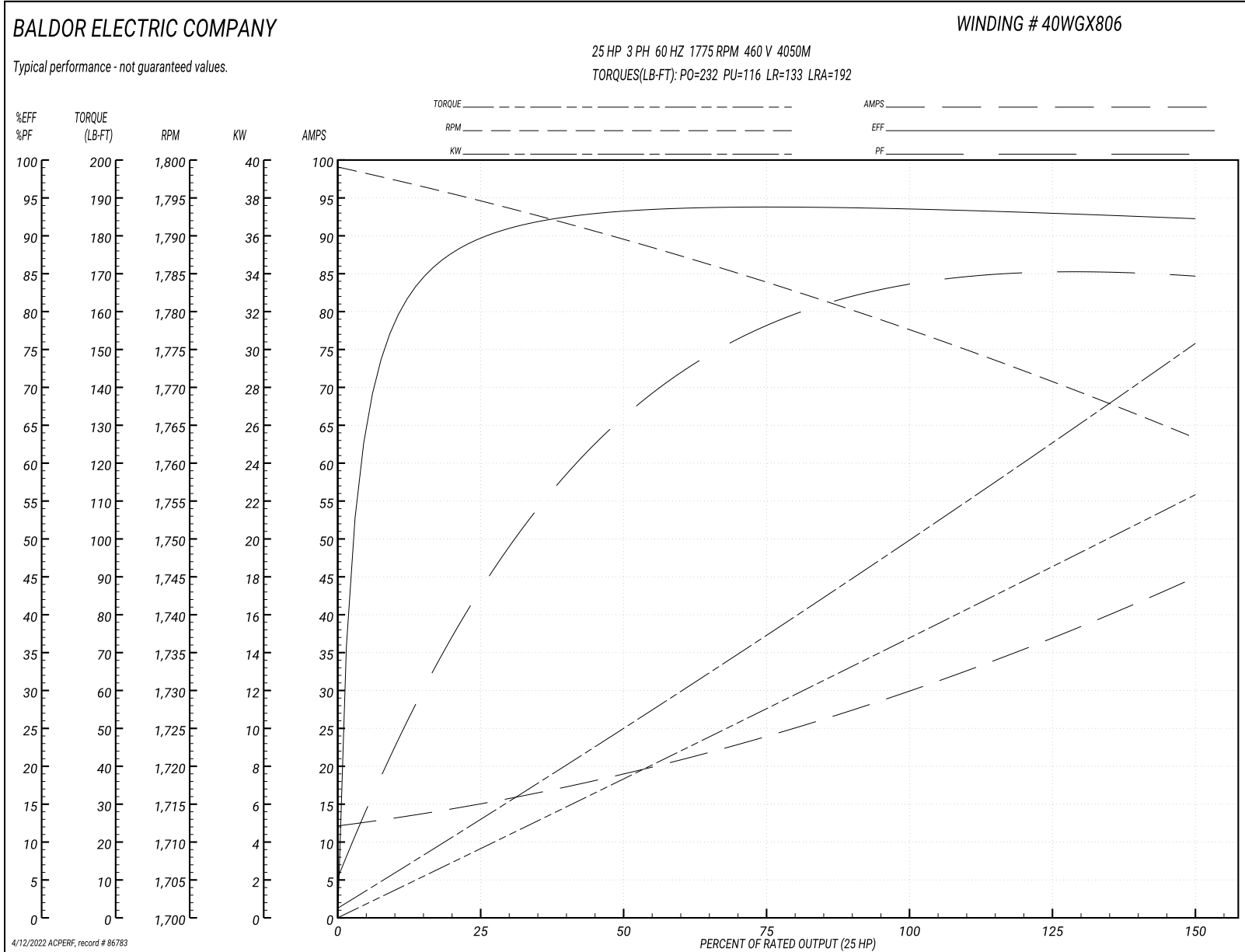
Typical performance - not guaranteed values

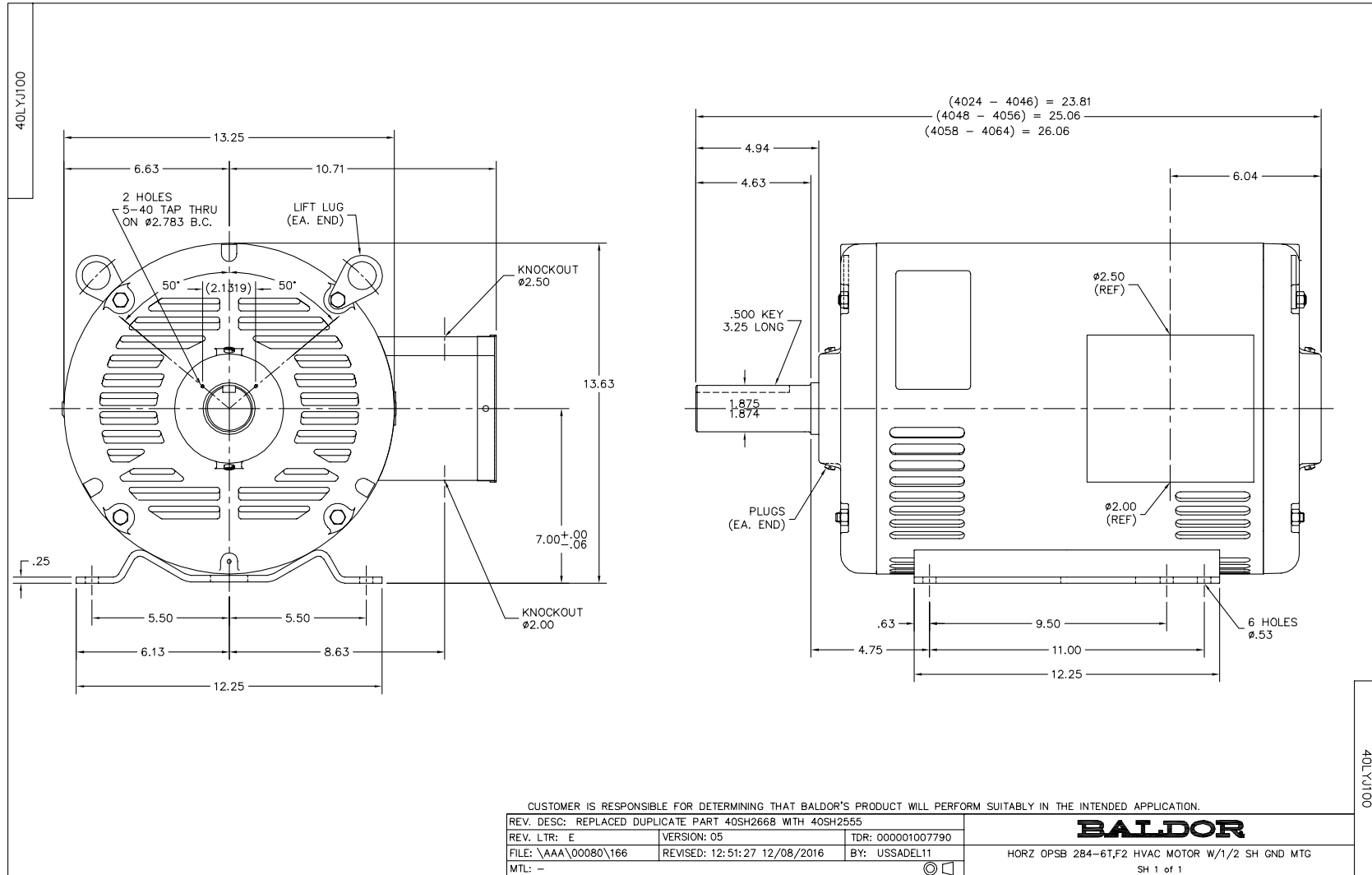
Winding: 40WGx806-R001		Type: 4050M		Enclosure: OPSB			
Nameplate Data			460 V, 60 Hz: High Voltage Connection				
Rated Output (HP)	25	Full Load Torque	73.81 LB-FT				
Volts	230/460	Start Configuration	direct on line				
Full Load Amps	60/30	Breakdown Torque	232 LB-FT				
R.P.M.	1775	Pull-up Torque	116 LB-FT				
Hz	60 Phase	3	Locked-rotor Torque	133 LB-FT			
NEMA Design Code	A	KVA Code	G	Starting Current	192 A		
Service Factor (S.F.)	1.15		No-load Current	12.6 A			
NEMA Nom. Eff.	93.6	Power Factor	82	Line-line Res. @ 25°C	0.35407 Ω		
Rating - Duty	40C AMB-CONT		Temp. Rise @ Rated Load	28°C			
S.F. Amps			Temp. Rise @ S.F. Load	34°C			
			Locked-rotor Power Factor	35			

Load Characteristics 460 V, 60 Hz, 25 HP

% of Rated Load	25	50	75	100	125	150	S.F.
Power Factor	45	67	78	82	85	85	84
Efficiency	89.4	93.1	93.8	93.6	93	92.1	93.2
Speed	1794.8	1789.5	1783.7	1777.6	1771	1763.2	1774
Line amperes	14.5	18.6	24.1	30.3	37.2	44.6	34.4

Performance Graph at 460V, 60Hz, 25.0HP Typical performance - Not guaranteed values

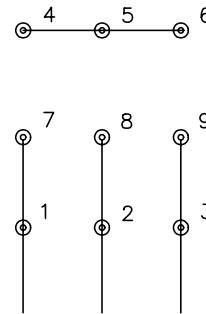




CD0005



LOW VOLTAGE
(2Y)



LINE

HIGH VOLTAGE
(1Y)



LINE

NOTES:

1. INTERCHANGE ANY TWO LINE LEADS TO REVERSE ROTATION.
2. OPTIONAL THERMOSTATS ARE PROVIDED WHEN SPECIFIED.
3. ACTUAL NUMBER OF INTERNAL PARALLEL CIRCUITS MAY BE A MULTIPLE OF THOSE SHOWN ABOVE.
4. LEAD COLORS ARE OPTIONAL. LEADS MUST ALWAYS BE NUMBERED AS SHOWN.

REV. DESC: REVISE TO SHOW OPTIONAL COLORS			
REV. LTR: E	BY: JLP	REVISED: 01/19/99 10:15	TDR: 0171435
900000		FILE: AAA00005140	MDL: -
		MTL: -	

BALDOR ELECTRIC Co.

3PH, DV, 9 LEADS

CD0005

Marketing maintained PDF of MN416:

<http://www.baldor.com/support/Literature/Load.ashx/MN416?ManNumber=MN416>