

**BALDOR® • RELIANCE** 

**Product Information Packet**

**EJMM2511T**

**10HP, 1180RPM, 3PH, 60HZ, 256JM, 3954M, OPSB, F**

| Part Detail |    |             |            |             |        |               |            |
|-------------|----|-------------|------------|-------------|--------|---------------|------------|
| Revision:   | B  | Status:     | PRD/A      | Change #:   |        | Proprietary:  | No         |
| Type:       | AC | Elec. Spec: | 39GW950    | CD Diagram: | CD0180 | Mfg Plant:    |            |
| Mech. Spec: |    | Layout:     | 39LYK062   | Poles:      | 06     | Created Date: | 02-10-2021 |
| Base:       |    | Eff. Date:  | 05-27-2021 | Leads:      | 9#12   |               |            |

| Specs                           |                         |                                |                       |
|---------------------------------|-------------------------|--------------------------------|-----------------------|
| Catalog Number:                 | EJMM2511T               | Heater Indicator:              | No Heater             |
| Enclosure:                      | OPSB                    | Insulation Class:              | F                     |
| Frame:                          | 256JM                   | Inverter Code:                 | Inverter Ready        |
| Frame Material:                 | Steel                   | KVA Code:                      | J                     |
| Output @ Frequency:             | 10.000 HP @ 60 HZ       | Lifting Lugs:                  | Standard Lifting Lugs |
| Synchronous Speed @ Frequency:  | 1200 RPM @ 60 HZ        | Locked Bearing Indicator:      | Locked Bearing        |
| Voltage @ Frequency:            | 460.0 V @ 60 HZ         | Motor Lead Quantity/Wire Size: | 9 @ 12 AWG            |
|                                 | 230.0 V @ 60 HZ         | Motor Lead Exit:               | Ko Box                |
| XP Class and Group:             | None                    | Motor Lead Termination:        | Flying Leads          |
| XP Division:                    | Not Applicable          | Motor Type:                    | 3954M                 |
| Agency Approvals:               | UR                      | Mounting Arrangement:          | F1                    |
|                                 | CSA EEV                 | Power Factor:                  | 71                    |
|                                 | CSA                     | Product Family:                | General Purpose       |
| Auxillary Box:                  | No Auxillary Box        | Pulley End Bearing Type:       | Ball                  |
| Auxillary Box Lead Termination: | None                    | Pulley Face Code:              | C-Face                |
| Base Indicator:                 | Rigid                   | Pulley Shaft Indicator:        | Tapped & Key          |
| Bearing Grease Type:            | Polyrex EM (-20F +300F) | Rodent Screen:                 | Included              |
| Blower:                         | None                    | Shaft Extension Location:      | Pulley End            |

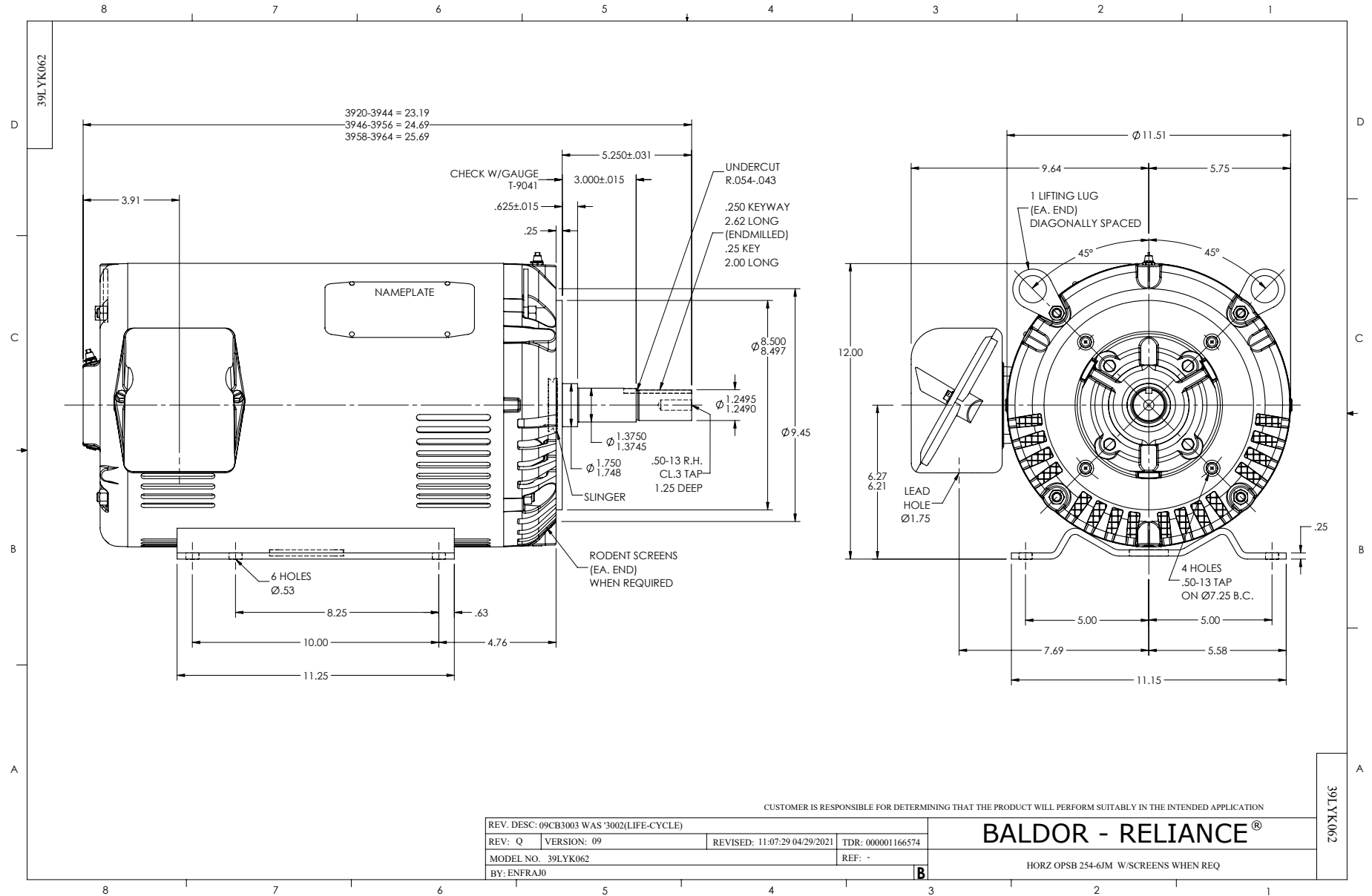
|                                       |                           |                                    |                     |
|---------------------------------------|---------------------------|------------------------------------|---------------------|
| <b>Current @ Voltage:</b>             | 14.300 A @ 460.0 V        | <b>Shaft Ground Indicator:</b>     | No Shaft Grounding  |
|                                       | 28.600 A @ 230.0 V        | <b>Shaft Rotation:</b>             | Reversible          |
|                                       | 30.000 A @ 208.0 V        | <b>Shaft Slinger Indicator:</b>    | Shaft Slinger       |
| <b>Design Code:</b>                   | A                         | <b>Speed Code:</b>                 | Single Speed        |
| <b>Drip Cover:</b>                    | No Drip Cover             | <b>Motor Standards:</b>            | NEMA                |
| <b>Duty Rating:</b>                   | CONT                      | <b>Starting Method:</b>            | Direct on line      |
| <b>Electrically Isolated Bearing:</b> | Not Electrically Isolated | <b>Thermal Device - Bearing:</b>   | None                |
| <b>Feedback Device:</b>               | NO FEEDBACK               | <b>Thermal Device - Winding:</b>   | None                |
| <b>Front Face Code:</b>               | Standard                  | <b>Vibration Sensor Indicator:</b> | No Vibration Sensor |
| <b>Front Shaft Indicator:</b>         | None                      | <b>Winding Thermal 1:</b>          | None                |
|                                       |                           | <b>Winding Thermal 2:</b>          | None                |

|                            |                               |  |             |             |                       |    |  |              |           |   |
|----------------------------|-------------------------------|--|-------------|-------------|-----------------------|----|--|--------------|-----------|---|
| <b>Nameplate NP1259LUA</b> |                               |  |             |             |                       |    |  |              |           |   |
| <b>CAT.NO.</b>             | EJMM2511T                     |  |             |             |                       |    |  |              |           |   |
| <b>SPEC.</b>               | 39-0000-0371                  |  |             |             |                       |    |  |              |           |   |
| <b>HP</b>                  | 10                            |  |             |             |                       |    |  |              |           |   |
| <b>VOLTS</b>               | 230/460                       |  |             |             |                       |    |  |              |           |   |
| <b>AMPS</b>                | 28.6/14.3                     |  |             |             |                       |    |  |              |           |   |
| <b>R.P.M.</b>              | 1180                          |  |             |             |                       |    |  |              |           |   |
| <b>FRAME</b>               | 256JM                         |  |             |             | <b>HZ</b>             | 60 |  |              | <b>PH</b> | 3 |
| <b>SER.F.</b>              | 1.15                          |  | <b>CODE</b> | J           | <b>DES</b>            | A  |  | <b>CLASS</b> | F         |   |
| <b>NEMA NOM. EFF.</b>      | 91.7                          |  |             | <b>P.F.</b> | 71                    |    |  |              |           |   |
| <b>RATING</b>              | 40C AMB-CONT                  |  |             |             |                       |    |  |              |           |   |
| <b>CC</b>                  | 010A                          |  |             |             | <b>USABLE AT 208V</b> |    |  | 30           |           |   |
| <b>DE</b>                  | 6309                          |  |             | <b>ODE</b>  | 6208                  |    |  |              |           |   |
| <b>ENCL</b>                | OPSB                          |  | <b>SN</b>   |             |                       |    |  |              |           |   |
| <b>USABLE AT</b>           | 50HZ 10HP 190/380V 33.4/16.7A |  |             |             |                       |    |  |              |           |   |
|                            |                               |  |             |             |                       |    |  |              | SF1.0     |   |

| Parts List    |  |          |
|---------------|--|----------|
| Part Number   | Description                              | Quantity |
| SA391047      | SA 39-0000-0371                          | 1.000 EA |
| RA381516      | RA 39-0000-0371                          | 1.000 EA |
| LB1115N       | LABEL,LIFTING DEVICE (ON ROLLS)          | 1.000 EA |
| LB1119N       | WARNING LABEL                            | 1.000 EA |
| LC0181        | CONNECTION LABEL                         | 1.000 EA |
| NP1259LUA     | ALUM SUPER-E UL CSA-EEV CC NEMA PREMIUM  | 1.000 EA |
| 85XU0407S04   | 4X1/4 U DRIVE PIN STAINLESS              | 2.000 EA |
| MN416A01      | TAG-INSTAL-MAINT no wire (2100/bx) 4/22  | 1.000 EA |
| HA6361A01     | LIFTING LUG FOR 37, 39 & 40 FRAME ZINC   | 2.000 EA |
| MJ1000A02     | GREASE, MOBIL POLYREX EM - 124047        | 0.080 LB |
| HA3154A10     | THRUBOLT STUD 3/8-16 X 18.250"           | 4.000 EA |
| XY3816A12     | 3/8-16 FINISHED NUT                      | 8.000 EA |
| 39EP3200A01SP | FR/PU ENDPLATE, MACH                     | 1.000 EA |
| HW5100A08     | W3118-035 WVY WSHR (WB)                  | 1.000 EA |
| HA4051A00     | PLASTIC CAP FOR GREASE FITTING           | 1.000 EA |
| HW4500A03     | GREASE FITTING, .125 NPT 1610(ALEMITE) 8 | 1.000 EA |
| HW4500A20     | 1/8NPT SL PIPE PLUG                      | 1.000 EA |
| 51XW1032A06   | 10-32 X .38, TAPTITE II, HEX WSHR SLTD S | 4.000 EA |
| 09CB3003      | CB W/1.75" DIA LD HL - 37, 39, 307 & 309 | 1.000 EA |
| 39EP3400A24   | PUEP, MACH - 309 BRG                     | 1.000 EA |
| HW4600B67     | V-RING SLINGER 1.770 X 2.170 X .28 VITON | 1.000 EA |
| 10XN2520K28   | 1/4-20 X 1.75" HX HD SCRWGRADE 5, ZINC P | 4.000 EA |
| HW1001A25     | LOCKWASHER 1/4, ZINC PLT .493 OD, .255 I | 4.000 EA |
| HA4051A00     | PLASTIC CAP FOR GREASE FITTING           | 1.000 EA |

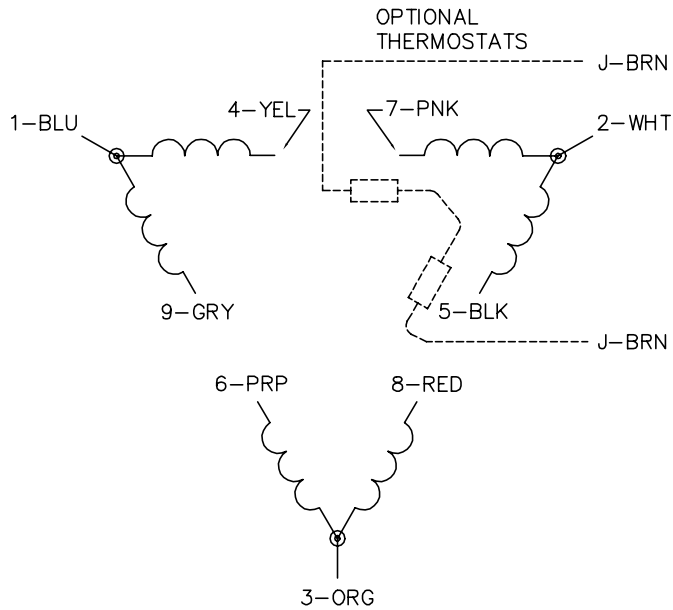
| <b>Parts List (continued)</b> |  |                 |
|-------------------------------|--|-----------------|
| <b>Part Number</b>            | <b>Description</b>                       | <b>Quantity</b> |
| HW4500A03                     | GREASE FITTING, .125 NPT 1610(ALEMITE) 8 | 1.000 EA        |
| HW4500A20                     | 1/8NPT SL PIPE PLUG                      | 1.000 EA        |
| 51XW1032A06                   | 10-32 X .38, TAPTITE II, HEX WSHR SLTD S | 4.000 EA        |
| WD1000B16                     | T&B CX70TN OR L70P TERMINAL LUG          | 1.000 EA        |
| 59XW2520G07                   | .25-20X.44,HEX SER WSHR,TAPTITE 2,GREEN  | 1.000 EA        |
| HA6016                        | ADAPTER, CAST CONDUIT BOX                | 1.000 EA        |
| 09CB3501SP                    | CONDUIT BOX LID FOR 09CB3001 & 09CB3002  | 1.000 EA        |
| 51XW2520A12                   | .25-20 X .75, TAPTITE II, HEX WSHR SLTD  | 2.000 EA        |
| 51XW2520A12                   | .25-20 X .75, TAPTITE II, HEX WSHR SLTD  | 2.000 EA        |
| HA1101A03                     | RODENT SCREEN, 39 FACE MTD.E.P.          | 1.000 EA        |
| 39AD2002A01                   | BAFFLE PLATE 39 OPEN, SLOTTED BAND MTRS  | 1.000 EA        |
| 39AD2002A01                   | BAFFLE PLATE 39 OPEN, SLOTTED BAND MTRS  | 1.000 EA        |
| HA1101A01                     | RODENT SCREEN, 39 MTR                    | 1.000 EA        |
| MG1000Y03                     | MUNSELL 2.53Y 6.70/ 4.60, GLOSS 20,      | 0.070 GA        |
| 39PA1000                      | PACKAGING GROUP 39 PRINT                 | 1.000 EA        |
| HW2501E18                     | KEY, 1/4 SQ X 2.000                      | 1.000 EA        |

No performance data has been  
assigned to this product.

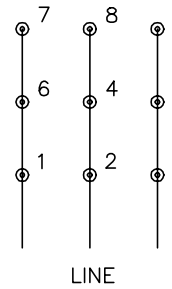




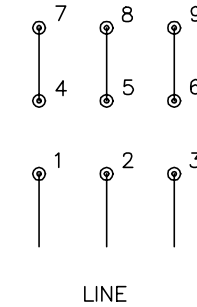
CD0180



LOW VOLTAGE  
(2D)



HIGH VOLTAGE  
(1D)



NOTES:

1. INTERCHANGE ANY TWO LINE LEADS TO REVERSE ROTATION.
2. OPTIONAL THERMOSTATS ARE PROVIDED WHEN SPECIFIED.
3. ACTUAL NUMBER OF INTERNAL PARALLEL CIRCUITS MAY BE A MULTIPLE OF THOSE SHOWN ABOVE.
4. LEAD COLORS ARE OPTIONAL. LEADS MUST ALWAYS BE NUMBERED AS SHOWN.

CD0180

|                                   |                              |                   |
|-----------------------------------|------------------------------|-------------------|
| REV. DESC: ADD CLASS CONN00000007 |                              |                   |
| REV. LTR: D                       | VERSION: 01                  | TDR: 000001099922 |
| FILE: \AAA\00005\148              | REVISED: 10:25:29 02/19/2019 | BY: ENBRIRO       |
| MTL: -                            | © □                          |                   |

**BALDOR - RELIANCE®**

3PH, DV, 9 LEADS, DELTA CONNECTION

SH 1 of 1

Marketing maintained PDF of MN416:

<http://www.baldor.com/support/Literature/Load.ashx/MN416?ManNumber=MN416>