

**BALDOR® • RELIANCE** 

**Product Information Packet**

**EJMM3157T-G**

**2HP,1750RPM,3PH,60HZ,145JM,3526M,OPSB,F1**

| Part Detail |        |             |            |             |        |               |            |
|-------------|--------|-------------|------------|-------------|--------|---------------|------------|
| Revision:   | T      | Status:     | PRD/A      | Change #:   |        | Proprietary:  | No         |
| Type:       | AC     | Elec. Spec: | 35WGM496   | CD Diagram: | CD0005 | Mfg Plant:    |            |
| Mech. Spec: | 35Z929 | Layout:     | 35LYZ929   | Poles:      | 04     | Created Date: | 12-06-2011 |
| Base:       | RG     | Eff. Date:  | 07-15-2020 | Leads:      | 9#18   |               |            |

| Specs                           |                         |                                |                 |
|---------------------------------|-------------------------|--------------------------------|-----------------|
| Catalog Number:                 | EJMM3157T-G             | Insulation Class:              | H               |
| Enclosure:                      | OPSB                    | Inverter Code:                 | Inverter Ready  |
| Frame:                          | 145JM                   | KVA Code:                      | K               |
| Frame Material:                 | Steel                   | Lifting Lugs:                  | No Lifting Lugs |
| Output @ Frequency:             | 2.000 HP @ 60 HZ        | Locked Bearing Indicator:      | Locked Bearing  |
| Synchronous Speed @ Frequency:  | 1800 RPM @ 60 HZ        | Motor Lead Quantity/Wire Size: | 9 @ 18 AWG      |
| Voltage @ Frequency:            | 460.0 V @ 60 HZ         | Motor Lead Exit:               | Ko Box          |
|                                 | 230.0 V @ 60 HZ         | Motor Lead Termination:        | Flying Leads    |
| XP Class and Group:             | None                    | Motor Type:                    | 3526M           |
| XP Division:                    | Not Applicable          | Mounting Arrangement:          | F1              |
| Agency Approvals:               | UR                      | Power Factor:                  | 76              |
|                                 | CSA EEV                 | Product Family:                | General Purpose |
|                                 | CSA                     | Pulley End Bearing Type:       | Ball            |
| Auxillary Box:                  | No Auxillary Box        | Pulley Face Code:              | C-Face          |
| Auxillary Box Lead Termination: | None                    | Pulley Shaft Indicator:        | Tapped & Key    |
| Base Indicator:                 | Rigid                   | Rodent Screen:                 | Included        |
| Bearing Grease Type:            | Polyrex EM (-20F +300F) | RoHS Status:                   | ROHS COMPLIANT  |
| Blower:                         | None                    | Shaft Extension Location:      | Pulley End      |

|                                       |                           |                                    |                     |
|---------------------------------------|---------------------------|------------------------------------|---------------------|
| <b>Current @ Voltage:</b>             | 2.900 A @ 460.0 V         | <b>Shaft Ground Indicator:</b>     | Shaft Grounding     |
|                                       | 5.800 A @ 208.0 V         | <b>Shaft Rotation:</b>             | Reversible          |
|                                       | 5.800 A @ 230.0 V         | <b>Shaft Slinger Indicator:</b>    | Shaft Slinger       |
| <b>Design Code:</b>                   | B                         | <b>Speed Code:</b>                 | Single Speed        |
| <b>Drip Cover:</b>                    | No Drip Cover             | <b>Motor Standards:</b>            | NEMA                |
| <b>Duty Rating:</b>                   | CONT                      | <b>Starting Method:</b>            | Direct on line      |
| <b>Electrically Isolated Bearing:</b> | Not Electrically Isolated | <b>Thermal Device - Bearing:</b>   | None                |
| <b>Feedback Device:</b>               | NO FEEDBACK               | <b>Thermal Device - Winding:</b>   | None                |
| <b>Front Face Code:</b>               | Standard                  | <b>Vibration Sensor Indicator:</b> | No Vibration Sensor |
| <b>Front Shaft Indicator:</b>         | None                      | <b>Winding Thermal 1:</b>          | None                |
| <b>Heater Indicator:</b>              | No Heater                 | <b>Winding Thermal 2:</b>          | None                |

|                                  |                            |  |             |      |  |                       |     |  |              |   |
|----------------------------------|----------------------------|--|-------------|------|--|-----------------------|-----|--|--------------|---|
| <b>Nameplate NP3553LUA</b>       |                            |  |             |      |  |                       |     |  |              |   |
| <b>CAT.NO.</b>                   | EJMM3157T-G                |  |             |      |  |                       |     |  |              |   |
| <b>SPEC.</b>                     | 35Z929M496G1               |  |             |      |  |                       |     |  |              |   |
| <b>HP</b>                        | 2                          |  |             |      |  |                       |     |  |              |   |
| <b>VOLTS</b>                     | 230/460                    |  |             |      |  |                       |     |  |              |   |
| <b>AMPS</b>                      | 5.8/2.9                    |  |             |      |  |                       |     |  |              |   |
| <b>RPM</b>                       | 1750                       |  |             |      |  |                       |     |  |              |   |
| <b>FRAME</b>                     | 145JM                      |  | <b>HZ</b>   | 60   |  | <b>PH</b>             | 3   |  |              |   |
| <b>SF</b>                        | 1.15                       |  | <b>CODE</b> | K    |  | <b>DES</b>            | B   |  | <b>CLASS</b> | H |
| <b>NEMA NOM. EFF</b>             | 86.5                       |  | <b>PF</b>   | 76   |  |                       |     |  |              |   |
| <b>RATING</b>                    | 40C AMB-CONT               |  |             |      |  |                       |     |  |              |   |
| <b>CC</b>                        | 010A                       |  |             |      |  | <b>USABLE AT 208V</b> | 5.8 |  |              |   |
| <b>DE</b>                        | 6206                       |  | <b>ODE</b>  | 6203 |  |                       |     |  |              |   |
| <b>ENCL</b>                      | OPSB                       |  | <b>SN</b>   |      |  |                       |     |  |              |   |
| <b>VPWM INVERTER READY</b>       |                            |  |             |      |  |                       |     |  |              |   |
| <b>CT30-60(2:1) VT3-60(20:1)</b> |                            |  |             |      |  |                       |     |  |              |   |
| <b>USABLE AT</b>                 | 50HZ 2HP 190/380V 5.8/2.9A |  |             |      |  |                       |     |  | <b>SF1.0</b> |   |

| Parts List  |  |          |
|-------------|--|----------|
| Part Number | Description                              | Quantity |
| SA235513    | SA 35Z929M496G1                          | 1.000 EA |
| RA222476    | RA 35Z929M496G1                          | 1.000 EA |
| NS2512A01   | INSULATOR, CONDUIT BOX X                 | 1.000 EA |
| 35CB3009    | 35 CB W/1.09 DIA. LEAD HOLE @ 6:         | 1.000 EA |
| 51XB1016A07 | 10-16 X 7/16 HXWSSLD SERTYB              | 2.000 EA |
| 11XW1032G06 | 10-32 X .38, TAPTITE II, HEX WSHR SLTD U | 1.000 EA |
| 18XN1032A06 | 10-32X3/8 FLAT HD SLTD                   | 1.000 EA |
| 35EP3209A00 | MASTER ODE,203 BRG,GRSR                  | 1.000 EA |
| HW4500A01   | 1641B(ALEMITE)400 UNIV, GREASE FITT      | 1.000 EA |
| HA1100A03   | SCREEN, RODENT                           | 1.000 EA |
| 51XT1032A04 | 10-32X1/4 HX WA SL SR TYT (F/S)          | 4.000 EA |
| HW1000A10   | #10 FLAT WASHER (SAE)                    | 4.000 EA |
| HW5100A03   | WAVY WASHER (W1543-017)                  | 1.000 EA |
| 35EP3401A03 | PU ENDPLATE -OPEN W/SCREENS & GREASER W/ | 1.000 EA |
| HW4500A01   | 1641B(ALEMITE)400 UNIV, GREASE FITT      | 1.000 EA |
| HA1102A08   | RODENT SCREEN 35 OPEN FACE MTD           | 1.000 EA |
| 51XT1032A04 | 10-32X1/4 HX WA SL SR TYT (F/S)          | 4.000 EA |
| 51XN1032A20 | 10-32 X 1 1/4 HX WS SL SR                | 2.000 EA |
| 35CB4521    | 35 LIPPED CB LID (GALV & PHOSPH)         | 1.000 EA |
| 51XW0832A07 | 8-32 X .44, TAPTITE II, HEX WSHR SLTD SE | 4.000 EA |
| HA1005A02   | SLINGER, OD 2.00, ID 1.14, 206 BRG,      | 1.000 EA |
| HW2501D13   | KEY, 3/16 SQ X 1.375                     | 1.000 EA |
| HA7000A01   | KEY RETAINER 7/8" DIA SHAFT              | 1.000 EA |
| 85XU0407S04 | 4X1/4 U DRIVE PIN STAINLESS              | 2.000 EA |

| <b>Parts List (continued)</b> |  |                 |
|-------------------------------|--|-----------------|
| <b>Part Number</b>            | <b>Description</b>                       | <b>Quantity</b> |
| LB1459                        | AEGIS SGR LABEL "AEGISLBL-100"           | 1.000 EA        |
| HW1000A10                     | #10 FLAT WASHER (SAE)                    | 4.000 EA        |
| MJ1000A02                     | GREASE, MOBIL POLYREX EM - 124047        | 0.050 LB        |
| MG1000Y03                     | MUNSELL 2.53Y 6.70/ 4.60, GLOSS 20,      | 0.017 GA        |
| HA3100A15                     | THRUBOLT 10-32 X 8.375                   | 4.000 EA        |
| 35AD2005A01                   | BAFFLE PLATE,MOD 35-SLTD BAND MTRS TDR   | 1.000 EA        |
| LC0005E01                     | CONN.DIA./WARNING LABEL (LC0005/LB1119N) | 1.000 EA        |
| NP3553LUA                     | ALUM SUPER-E VPWM INVERTER READY UL      | 1.000 EA        |
| 36PA1000                      | PKG GRP, PRINT PK1016A06                 | 1.000 EA        |
| MN416A01                      | TAG-INSTAL-MAINT no wire (2100/bx) 4/22  | 1.000 EA        |
| FE-0000001                    | ZRTG FE ASSEMBLY                         | 1.000 EA        |

**AC Induction Motor Performance Data**

Record # 35595

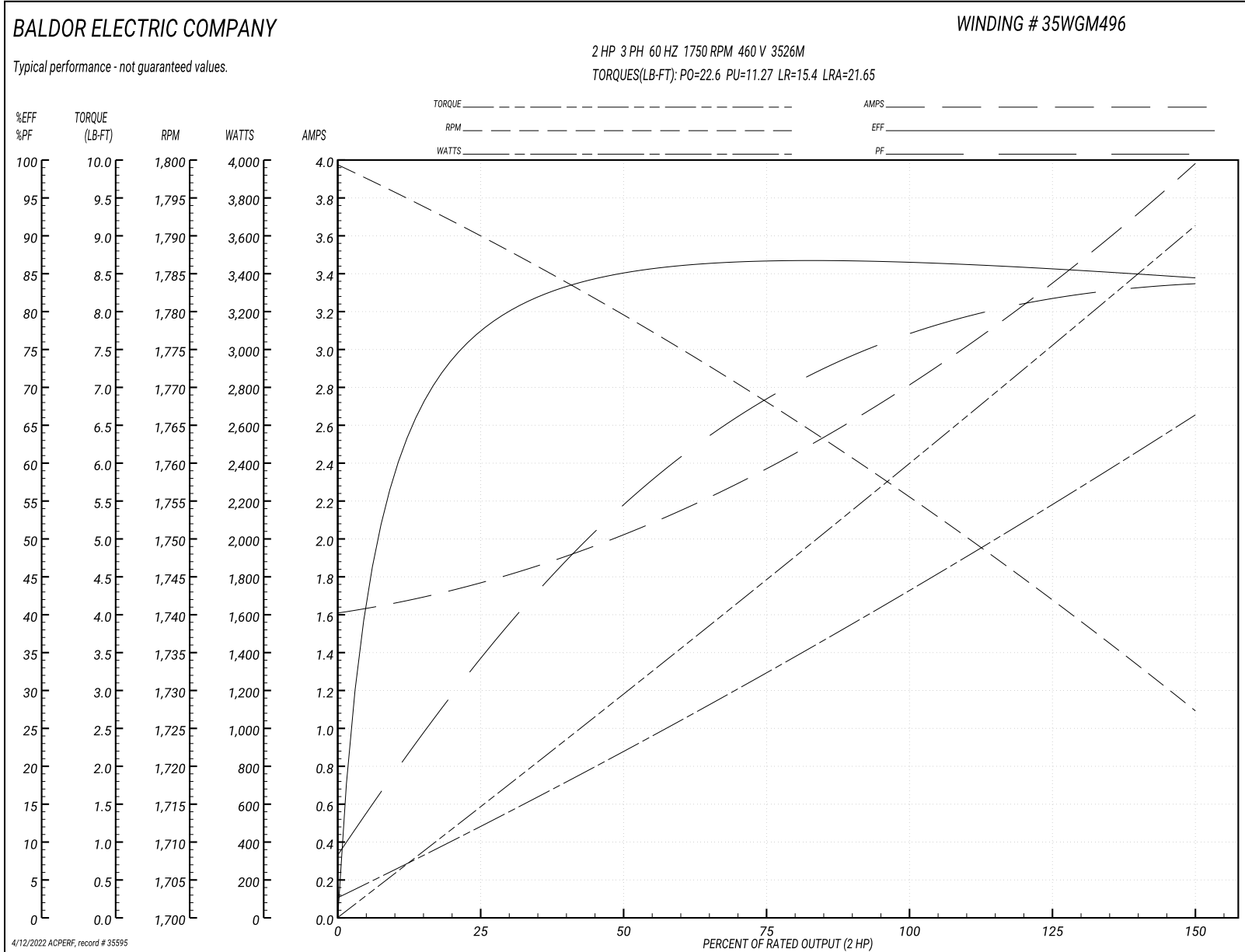
Typical performance - not guaranteed values

| <b>Winding: 35WGM496-R002</b> |                   | <b>Type: 3526M</b>         |  | <b>Enclosure: OPSB</b>       |        |
|-------------------------------|-------------------|----------------------------|--|------------------------------|--------|
| <b>Nameplate Data</b>         |                   |                            | <b>460 V, 60 Hz:<br/>High Voltage Connection</b> |                              |        |
| <b>Rated Output (HP)</b>      | 2                 | <b>Full Load Torque</b>    | 6.02 LB-FT                                       |                              |        |
| <b>Volts</b>                  | 230/460           | <b>Start Configuration</b> | direct on line                                   |                              |        |
| <b>Full Load Amps</b>         | 5.8/2.9           | <b>Breakdown Torque</b>    | 22.6 LB-FT                                       |                              |        |
| <b>R.P.M.</b>                 | 1750              | <b>Pull-up Torque</b>      | 11.27 LB-FT                                      |                              |        |
| <b>Hz</b>                     | 60 <b>Phase</b>   | 3                          | <b>Locked-rotor Torque</b>                       | 15.4 LB-FT                   |        |
| <b>NEMA Design Code</b>       | <b>B KVA Code</b> | K                          | <b>Starting Current</b>                          | 21.65 A                      |        |
| <b>Service Factor (S.F.)</b>  | 1.15              | <b>No-load Current</b>     | 1.63 A   |                              |        |
| <b>NEMA Nom. Eff.</b>         | 86.5              | <b>Power Factor</b>        | 76   | <b>Line-line Res. @ 25°C</b> | 8.22 Ω |
| <b>Rating - Duty</b>          | 40C AMB-CONT      |                            | <b>Temp. Rise @ Rated Load</b>                   | 38°C                         |        |
| <b>S.F. Amps</b>              |                   |                            | <b>Temp. Rise @ S.F. Load</b>                    | 46°C                         |        |
|                               |                   |                            | <b>Locked-rotor Power Factor</b>                 | 52.4                         |        |
|                               |                   |                            | <b>Rotor inertia</b>                             | 0.154 LB-FT <sup>2</sup>     |        |

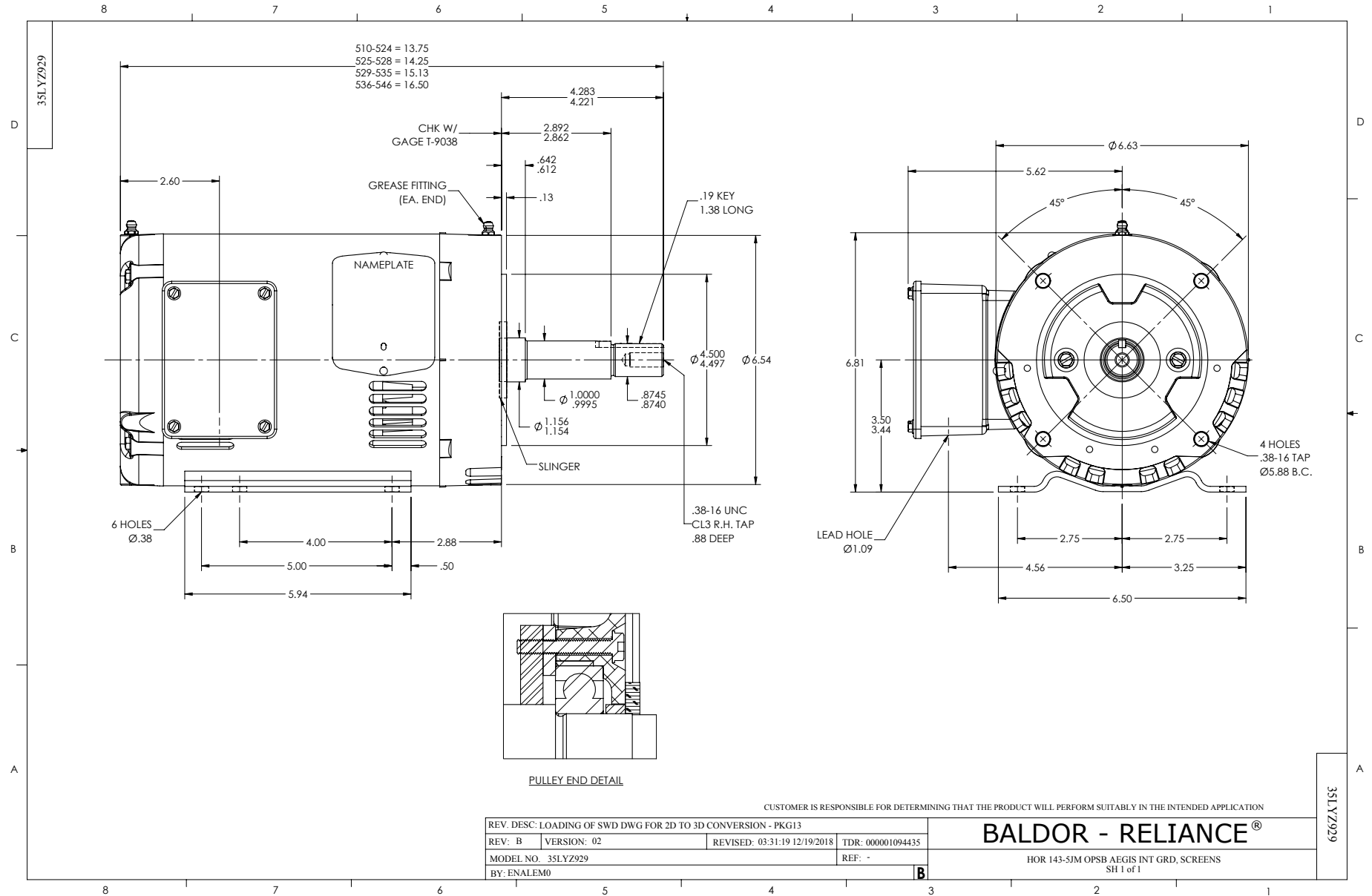
**Load Characteristics 460 V, 60 Hz, 2 HP**

| <b>% of Rated Load</b> | <b>25</b> | <b>50</b> | <b>75</b> | <b>100</b> | <b>125</b> | <b>150</b> | <b>S.F.</b> |
|------------------------|-----------|-----------|-----------|------------|------------|------------|-------------|
| <b>Power Factor</b>    | 35        | 56        | 69        | 76         | 81         | 84         | 78          |
| <b>Efficiency</b>      | 77        | 84.7      | 86.8      | 86.6       | 85.8       | 84.3       | 86.2        |
| <b>Speed</b>           | 1789      | 1779      | 1768      | 1756       | 1742       | 1727       | 1749        |
| <b>Line amperes</b>    | 1.75      | 2.01      | 2.37      | 2.85       | 3.37       | 3.96       | 3.19        |

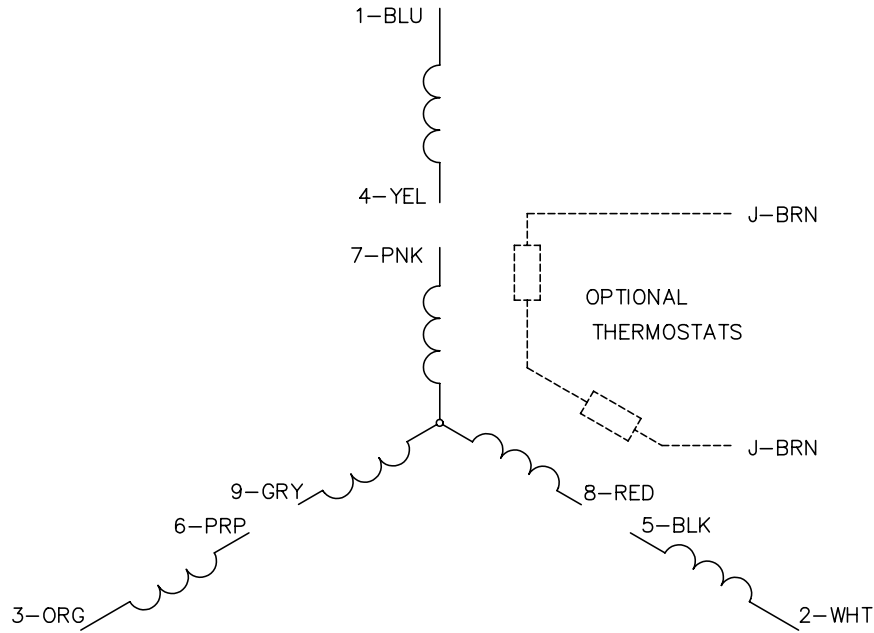
Performance Graph at 460V, 60Hz, 2.0HP Typical performance - Not guaranteed values



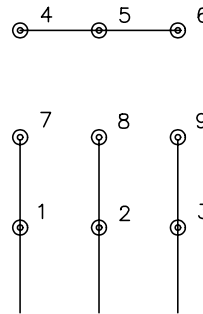




CD0005

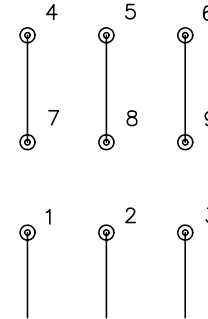


LOW VOLTAGE  
(2Y)



LINE

HIGH VOLTAGE  
(1Y)



LINE

NOTES:

1. INTERCHANGE ANY TWO LINE LEADS TO REVERSE ROTATION.
2. OPTIONAL THERMOSTATS ARE PROVIDED WHEN SPECIFIED.
3. ACTUAL NUMBER OF INTERNAL PARALLEL CIRCUITS MAY BE A MULTIPLE OF THOSE SHOWN ABOVE.
4. LEAD COLORS ARE OPTIONAL. LEADS MUST ALWAYS BE NUMBERED AS SHOWN.

REV. DESC: REVISE TO SHOW OPTIONAL COLORS

REV. LTR: E BY: JLP

REVISED: 01/19/99 10:15

TDR: 0171435

900003

FILE: AAA00005140

MDL: -

MTL: -

**BALDOR ELECTRIC Co.**

3PH, DV, 9 LEADS

CD0005