

BALDOR® • RELIANCE 

Product Information Packet

EJPM2542T

50HP,3550RPM,3PH,60HZ,324JP,4248M,OPSB,F

| Part Detail | | | | | | | |
|-------------|----|-------------|--------------|-------------|--------|---------------|------------|
| Revision: | - | Status: | PRD/A | Change #: | | Proprietary: | No |
| Type: | AC | Elec. Spec: | 42WGW284 | CD Diagram: | CD0180 | Mfg Plant: | |
| Mech. Spec: | | Layout: | 42LY-000-047 | Poles: | 02 | Created Date: | 01-15-2021 |
| Base: | | Eff. Date: | 02-01-2021 | Leads: | 9#6 | | |

| Specs | | | |
|---------------------------------|-------------------------|--------------------------------|-----------------------|
| Catalog Number: | EJPM2542T | Inverter Code: | Inverter Ready |
| Enclosure: | OPSB | IP Rating: | NONE |
| Frame: | 324JP | KVA Code: | H |
| Frame Material: | Steel | Lifting Lugs: | Standard Lifting Lugs |
| Output @ Frequency: | 50.000 HP @ 60 HZ | Locked Bearing Indicator: | Locked Bearing |
| Synchronous Speed @ Frequency: | 3600 RPM @ 60 HZ | Motor Lead Quantity/Wire Size: | 9 @ 6 AWG |
| Voltage @ Frequency: | 230.0 V @ 60 HZ | Motor Lead Exit: | Ko Box |
| | 460.0 V @ 60 HZ | Motor Lead Termination: | Flying Leads |
| Agency Approvals: | UR | Motor Type: | 4248M |
| | CSA EEV | Mounting Arrangement: | F1 |
| | CSA | Power Factor: | 87 |
| Auxillary Box: | No Auxillary Box | Product Family: | General Purpose |
| Auxillary Box Lead Termination: | None | Pulley End Bearing Type: | Ball |
| Base Indicator: | Rigid | Pulley Face Code: | C-Face |
| Bearing Grease Type: | Polyrex EM (-20F +300F) | Pulley Shaft Indicator: | Tapped & Key |
| Blower: | None | Rodent Screen: | Included |
| Current @ Voltage: | 116.000 A @ 230.0 V | Shaft Extension Location: | Pulley End |
| | 58.000 A @ 460.0 V | Shaft Ground Indicator: | No Shaft Grounding |

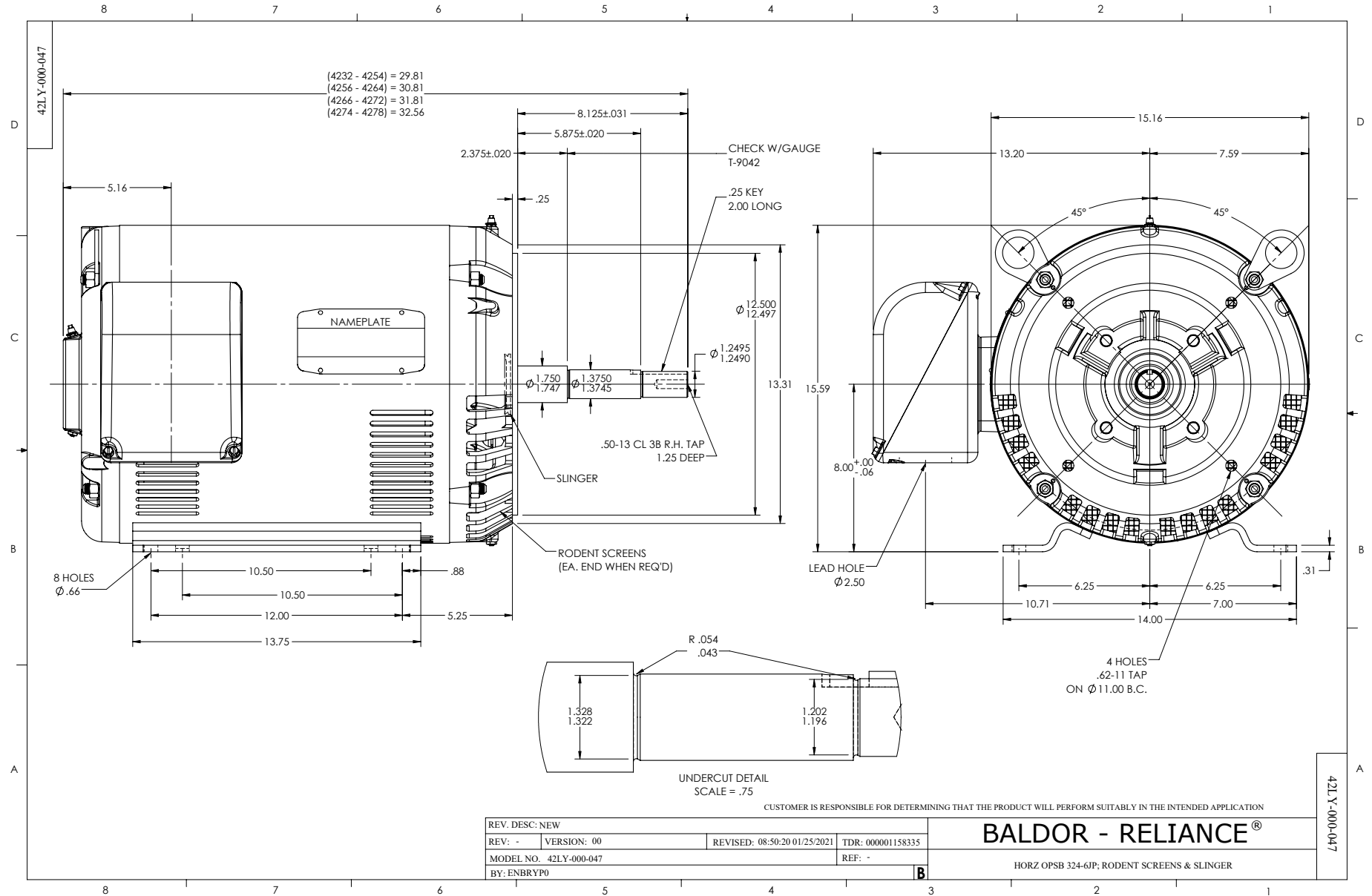
| | | | |
|---------------------------------------|---------------------------|------------------------------------|---------------------|
| Design Code: | A | Shaft Rotation: | Reversible |
| Drip Cover: | No Drip Cover | Shaft Slinger Indicator: | Shaft Slinger |
| Duty Rating: | CONT | Speed Code: | Single Speed |
| Electrically Isolated Bearing: | Not Electrically Isolated | Motor Standards: | NEMA |
| Feedback Device: | NO FEEDBACK | Starting Method: | Direct on line |
| Front Face Code: | Standard | Thermal Device - Bearing: | None |
| Front Shaft Indicator: | None | Thermal Device - Winding: | None |
| Heater Indicator: | No Heater | Vibration Sensor Indicator: | No Vibration Sensor |
| Insulation Class: | F | Winding Thermal 1: | None |
| | | Winding Thermal 2: | None |

| Nameplate NP2138LUA | | | | | | | | | | | |
|---------------------|----------------------------|----|----|-----------|------------|-------|---------|-----------|------|--------|------|
| CAT.NO. | EJPM2542T | | | P/N | | | | ENCLOSURE | OPSB | | |
| SPEC. | 42-0000-0106 | | CC | 010A | | FRAME | 324JP | | S/N | | |
| HP | 50 | | | CLASS | F | | HZ | 60 | | | |
| RPM | 3550 | | | PH | 3 | | DES | A | | | |
| VOLT | 230/460 | | | KVA-CODE | H | | ODE BRG | 6311 | | DE BRG | 6312 |
| AMP | 116/58 | | | USABLE AT | 208V | | | | | | |
| RATING | 40C AMB-CONT | | | GREASE | POLYREX EM | | | | | | |
| NEMA-NOM-EFF | 93 | PF | 87 | SER.F. | 1.15 | | | | | | |
| HTR-VOLTS | 50HZ 50HP 190/380V 138/69A | | | S.F. | | 1.0 | | | | | |
| HTR-AMPS | | | | | | | | | | | |

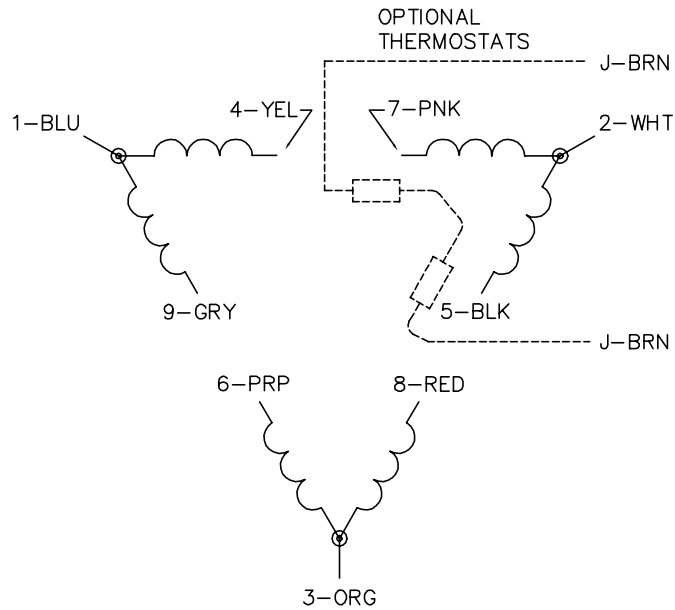
| Parts List | | |
|-------------|---|----------|
| Part Number | Description | Quantity |
| SA389876 | SA 42-0000-0106 | 1.000 EA |
| RA380281 | RA 42-0000-0106 | 1.000 EA |
| LB1115N | LABEL,LIFTING DEVICE (ON ROLLS) | 1.000 EA |
| LB1119N | WARNING LABEL | 1.000 EA |
| LC0181 | CONNECTION LABEL | 1.000 EA |
| NP2138LUA | ALUM SUPER-E UL CSA-EEV PREM CC (300SER) | 1.000 EA |
| 85XU0407S04 | 4X1/4 U DRIVE PIN STAINLESS | 4.000 EA |
| MN416A01 | TAG-INSTAL-MAINT no wire (2100/bx) 4/22 | 1.000 EA |
| HA6360 | LIFTING LUG FOR 42 FRAME MOTORS. | 2.000 EA |
| MJ1000A02 | GREASE, MOBIL POLYREX EM - 124047 | 0.030 LB |
| HA3151A02 | THRUBOLT STUD 1/2-13 X 19.25 | 4.000 EA |
| HW1001A50 | LOCKWASHER 1/2, ZINC PLT.,.879 OD, .509 I | 8.000 EA |
| XY5013A12 | NUT,1/2-13,HEX,STEEL,ZINCPLATED | 8.000 EA |
| 42EP3200A01 | FR ENDPLATE, MACH | 1.000 EA |
| HW5100A13 | W4627-047 WVY WSHER | 1.000 EA |
| HA4051A00 | PLASTIC CAP FOR GREASE FITTING | 1.000 EA |
| HW4500A03 | GREASE FITTING, .125 NPT 1610(ALEMITE) 8 | 1.000 EA |
| HW4500A17 | 317400 ALEMITE GREASE RELIEF | 1.000 EA |
| HW4500A17 | 317400 ALEMITE GREASE RELIEF | 1.000 EA |
| 51XW1032A06 | 10-32 X .38, TAPTITE II, HEX WSHR SLTD S | 4.000 EA |
| 42EP1300A44 | PU ENDPLATE, MACH | 1.000 EA |
| HW4600B41 | V-RING SLINGER 2.125 X 2.880 X 0.280 | 1.000 EA |
| 10XN3118K40 | 5/16-18 X 2.50" HEX HD, GRADE 5 | 4.000 EA |
| HW1001A31 | LOCKWASHER 5/16, ZINC PLT.591 OD, .319 I | 4.000 EA |

| Parts List (continued) | | |
|------------------------|--|----------|
| Part Number | Description | Quantity |
| HA4051A00 | PLASTIC CAP FOR GREASE FITTING | 1.000 EA |
| HW4500A03 | GREASE FITTING, .125 NPT 1610(ALEMITE) 8 | 1.000 EA |
| 51XW1032A06 | 10-32 X .38, TAPTITE II, HEX WSHR SLTD S | 4.000 EA |
| 10CB3001A31 | KOBX, MACH W/2.50 LD HL,.38-16 GND | 1.000 EA |
| 19XW3118A12 | .31-18 X .75 HEX WASHER HEAD TAPTITE II | 4.000 EA |
| HW1001A31 | LOCKWASHER 5/16, ZINC PLT.591 OD, .319 I | 4.000 EA |
| WD1000B19 | TERMINAL BURNDY L250HP | 1.000 EA |
| 10XN3816K12 | 3/8-16 X 3/4 HEX HD CAP GRADE 5 | 1.000 EA |
| HW1001A38 | LOCKWASHER 3/8, ZINC PLT .688 OD, .382 I | 1.000 EA |
| HA6017 | CAST ADAPTER, 40,42 KOBX | 1.000 EA |
| 19XW3118A12 | .31-18 X .75 HEX WASHER HEAD TAPTITE II | 2.000 EA |
| HW1001A31 | LOCKWASHER 5/16, ZINC PLT.591 OD, .319 I | 2.000 EA |
| 10CB3500SP | CONDUIT BOX LID, CAST | 1.000 EA |
| 51XW2520A12 | .25-20 X .75, TAPTITE II, HEX WSHR SLTD | 4.000 EA |
| HA1165A01 | RODENT SCREEN FOR 42 PU. C-FACE EP (INSI | 1.000 EA |
| 42AD2001C01 | BAFFLE PLATE 42 OPEN, SLOTTED BAND MTRS | 1.000 EA |
| HA1108A01 | RODENT SCREEN | 1.000 EA |
| 42AD2001C01 | BAFFLE PLATE 42 OPEN, SLOTTED BAND MTRS | 1.000 EA |
| MG1000Y03 | MUNSELL 2.53Y 6.70/ 4.60, GLOSS 20, | 0.125 GA |
| 42PA1000 | PACKAGING GROUP PRINT PK1024A07 | 1.000 EA |
| HW2501E18 | KEY, 1/4 SQ X 2.000 | 1.000 EA |

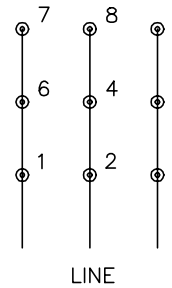
No performance data has been
assigned to this product.



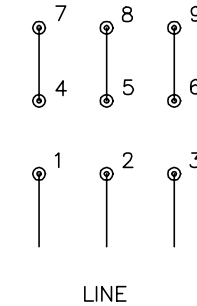
CD0180



LOW VOLTAGE
(2D)



HIGH VOLTAGE
(1D)



NOTES:

1. INTERCHANGE ANY TWO LINE LEADS TO REVERSE ROTATION.
2. OPTIONAL THERMOSTATS ARE PROVIDED WHEN SPECIFIED.
3. ACTUAL NUMBER OF INTERNAL PARALLEL CIRCUITS MAY BE A MULTIPLE OF THOSE SHOWN ABOVE.
4. LEAD COLORS ARE OPTIONAL. LEADS MUST ALWAYS BE NUMBERED AS SHOWN.

CD0180

| | | |
|-----------------------------------|------------------------------|-------------------|
| REV. DESC: ADD CLASS CONN00000007 | | |
| REV. LTR: D | VERSION: 01 | TDR: 000001099922 |
| FILE: \AAA\00005\148 | REVISED: 10:25:29 02/19/2019 | BY: ENBRIRO |
| MTL: - | © □ | |

BALDOR - RELIANCE®

3PH, DV, 9 LEADS, DELTA CONNECTION

SH 1 of 1

Marketing maintained PDF of MN416:

<http://www.baldor.com/support/Literature/Load.ashx/MN416?ManNumber=MN416>