

BALDOR® • RELIANCE 

Product Information Packet

EM2535T-8G

30HP,1775RPM,3PH,60HZ,286T,4060M,OPSB,N

| Part Detail | | | | | | | |
|-------------|--------|-------------|------------|-------------|--------|---------------|------------|
| Revision: | B | Status: | PRD/A | Change #: | | Proprietary: | No |
| Type: | AC | Elec. Spec: | 40WGx451 | CD Diagram: | CD0695 | Mfg Plant: | |
| Mech. Spec: | 40E246 | Layout: | 40LYE246 | Poles: | 04 | Created Date: | 07-07-2021 |
| Base: | RG | Eff. Date: | 04-07-2022 | Leads: | 6#6 | | |

| Specs | | | |
|---------------------------------|-------------------------|--------------------------------|-----------------------|
| Catalog Number: | EM2535T-8G | Inverter Code: | Inverter Ready |
| Enclosure: | OPSB | KVA Code: | H |
| Frame: | 286T | Lifting Lugs: | Standard Lifting Lugs |
| Frame Material: | Steel | Locked Bearing Indicator: | No Locked Bearing |
| Output @ Frequency: | 30.000 HP @ 60 HZ | Motor Lead Quantity/Wire Size: | 3 @ 6 AWG |
| Synchronous Speed @ Frequency: | 1800 RPM @ 60 HZ | Motor Lead Exit: | Ko Box |
| Voltage @ Frequency: | 200.0 V @ 60 HZ | Motor Lead Termination: | Flying Leads |
| Agency Approvals: | CSA | Motor Type: | 4060M |
| | CSA EEV | Mounting Arrangement: | F1 |
| | UR | Power Factor: | 82 |
| Auxillary Box: | No Auxillary Box | Product Family: | General Purpose |
| Auxillary Box Lead Termination: | None | Pulley End Bearing Type: | Ball |
| Base Indicator: | Rigid | Pulley Face Code: | Standard |
| Bearing Grease Type: | Polyrex EM (-20F +300F) | Pulley Shaft Indicator: | Standard |
| Blower: | None | Rodent Screen: | None |
| Current @ Voltage: | 83.000 A @ 200.0 V | Shaft Extension Location: | Pulley End |
| | 83.000 A @ 208.0 V | Shaft Ground Indicator: | Shaft Grounding |
| Design Code: | A | Shaft Rotation: | Reversible |

| | | | |
|---------------------------------------|---------------------------|------------------------------------|---------------------|
| Drip Cover: | No Drip Cover | Shaft Slinger Indicator: | No Slinger |
| Duty Rating: | CONT | Speed Code: | Single Speed |
| Electrically Isolated Bearing: | Not Electrically Isolated | Motor Standards: | NEMA |
| Feedback Device: | NO FEEDBACK | Starting Method: | Direct on line |
| Front Face Code: | Standard | Thermal Device - Bearing: | None |
| Front Shaft Indicator: | None | Thermal Device - Winding: | None |
| Heater Indicator: | No Heater | Vibration Sensor Indicator: | No Vibration Sensor |
| Insulation Class: | H | Winding Thermal 1: | None |
| | | Winding Thermal 2: | None |

| Nameplate NP3554L | | | | | | | | | | | |
|-------------------|--------------|--|----------|----------------|------|-------------------------|---------|------------|---------|--------|------|
| CAT.NO. | EM2535T-8G | | | P/N | | | | ENCL | OPSB | | |
| SPEC. | 40E246X451G1 | | CC | 010A | | FRAME | 286T | | SER.NO. | | |
| HP | 30 | | CLASS | H | | HZ | 60 | | | | |
| RPM | 1775 | | PH | 3 | | DES | A | | | | |
| VOLTS | 200 | | | CODE | H | | ODE BRG | 6309 | | DE BRG | 6311 |
| AMPS | 83 | | | USABLE AT 208V | 83 | | | | | | |
| RATING | 40C AMB-CONT | | | NEMA-NOM-EFF | 94.1 | | GREASE | POLYREX EM | | | |
| PF | 82 | | SER.F. | 1.15 | | VPWM INVERTER READY | | | | | |
| HTR-VOLTS | | | HTR-AMPS | | | MAX. SPACE HEATER TEMP. | | | | | |

| Parts List | | |
|-------------|--|----------|
| Part Number | Description | Quantity |
| SA395204 | SA 40E246X451G1 | 1.000 EA |
| RA385932 | RA 40E246X451G1 | 1.000 EA |
| HA6361A01 | LIFTING LUG FOR 37, 39 & 40 FRAME ZINC | 2.000 EA |
| HA6017 | CAST ADAPTER, 40,42 KOBX | 1.000 EA |
| 19XW3118A12 | .31-18 X .75 HEX WASHER HEAD TAPTITE II | 2.000 EA |
| HW1001A31 | LOCKWASHER 5/16, ZINC PLT.591 OD, .319 I | 2.000 EA |
| 10CB3000SP | KOBX, CAST W/2.00 LEAD HOLE | 1.000 EA |
| 19XW3118A12 | .31-18 X .75 HEX WASHER HEAD TAPTITE II | 4.000 EA |
| WD1000B25 | GND LUG, BURNDY L125HP OR T&B L125HP-BB | 1.000 EA |
| 19XW3118G08 | .31-18X.50,HEX WSHR HD,TAPTITE 2,GREEN | 1.000 EA |
| 40EP3200A02 | STD FREP OPEN 309 BRG | 1.000 EA |
| HW5100A11 | W3917-042 WVY WSHR (WB) | 1.000 EA |
| 40EP3200B01 | STD PUEP OPEN 311 LOCKED BRG W/AIR DEFLE | 1.000 EA |
| 10XN3118K40 | 5/16-18 X 2.25" HEX HD, GRADE 5 | 4.000 EA |
| HW1001A31 | LOCKWASHER 5/16, ZINC PLT.591 OD, .319 I | 4.000 EA |
| XY3816A12 | 3/8-16 FINISHED NUT | 8.000 EA |
| 10CB3500SP | CONDUIT BOX LID, CAST | 1.000 EA |
| 51XW2520A12 | .25-20 X .75, TAPTITE II, HEX WSHR SLTD | 4.000 EA |
| HW2501H28 | KEY, 1/2 SQ X 3.250 | 1.000 EA |
| LB1115N | LABEL,LIFTING DEVICE (ON ROLLS) | 1.000 EA |
| HW4500A03 | GREASE FITTING, .125 NPT 1610(ALEMITE) 8 | 1.000 EA |
| HW4500A20 | 1/8NPT SL PIPE PLUG | 1.000 EA |
| HA4051A00 | PLASTIC CAP FOR GREASE FITTING | 1.000 EA |
| MJ1000A02 | GREASE, MOBIL POLYREX EM - 124047 | 0.050 LB |

| Parts List (continued) | | |
|-------------------------------|--|-----------------|
| Part Number | Description | Quantity |
| HW4500A03 | GREASE FITTING, .125 NPT 1610(ALEMITE) 8 | 1.000 EA |
| HW4500A20 | 1/8NPT SL PIPE PLUG | 1.000 EA |
| HA4051A00 | PLASTIC CAP FOR GREASE FITTING | 1.000 EA |
| MG1000Y03 | MUNSELL 2.53Y 6.70/ 4.60, GLOSS 20, | 0.070 GA |
| 85XU0407S04 | 4X1/4 U DRIVE PIN STAINLESS | 4.000 EA |
| 40AD2002A01 | LEXAN BAFFLE 40 FR OPEN | 1.000 EA |
| HA3154A06 | THRUBOLT STUD 3/8-16 X 19.500 | 4.000 EA |
| 40AD2002A01 | LEXAN BAFFLE 40 FR OPEN | 1.000 EA |
| LB1119N | WARNING LABEL | 1.000 EA |
| LC0006 | CONNECTION LABEL | 1.000 EA |
| NP3554L | SS SUPER-E UL CSA-EEV PREM CC | 1.000 EA |
| 40PA1000 | PACKAGING GROUP | 1.000 EA |
| MN416A01 | TAG-INSTAL-MAINT no wire (2100/bx) 4/22 | 1.000 EA |
| LB1350 | BAR CODE LABEL FOR YORK | 1.000 EA |

AC Induction Motor Performance Data

Record # 89138

Typical performance - not guaranteed values

| Winding: 40WGX451-R002 | | Type: 4060M | | Enclosure: OPSB | |
|-------------------------------|--------------------------|----------------------------------|---|------------------------|--|
| Nameplate Data | | | 200 V, 60 Hz: Single Voltage Motor | | |
| Rated Output (HP) | 30 | Full Load Torque | 88.7 LB-FT | | |
| Volts | 200 | Start Configuration | direct on line | | |
| Full Load Amps | 83 | Breakdown Torque | 281 LB-FT | | |
| R.P.M. | 1775 | Pull-up Torque | 131 LB-FT | | |
| Hz | 60 Phase | 3 | Locked-rotor Torque | 162 LB-FT | |
| NEMA Design Code | A KVA Code | H | Starting Current | 581 A | |
| Service Factor (S.F.) | 1.15 | No-load Current | 35.3 A | | |
| NEMA Nom. Eff. | 94.1 Power Factor | 82 | Line-line Res. @ 25°C | 0.0382 Ω | |
| Rating - Duty | 40C AMB-CONT | Temp. Rise @ Rated Load | 29°C | | |
| S.F. Amps | | Temp. Rise @ S.F. Load | 36°C | | |
| | | Locked-rotor Power Factor | 31.2768 | | |
| | | Rotor inertia | 4.77 lb-ft ² | | |

Load Characteristics 200 V, 60 Hz, 30 HP

| % of Rated Load | 25 | 50 | 75 | 100 | 125 | 150 | S.F. |
|------------------------|-----------|-----------|-----------|------------|------------|------------|-------------|
| Power Factor | 44 | 67 | 77 | 82 | 84 | 85 | 83 |
| Efficiency | 90.5 | 93.9 | 94.5 | 94.3 | 93.5 | 93.1 | 93.8 |
| Speed | 1794 | 1788 | 1783 | 1777 | 1770 | 1763 | 1773 |
| Line amperes | 40.6 | 51.6 | 66.7 | 83.4 | 102 | 122 | 94.6 |

Performance Graph at 200V, 60Hz, 30.0HP Typical performance - Not guaranteed values

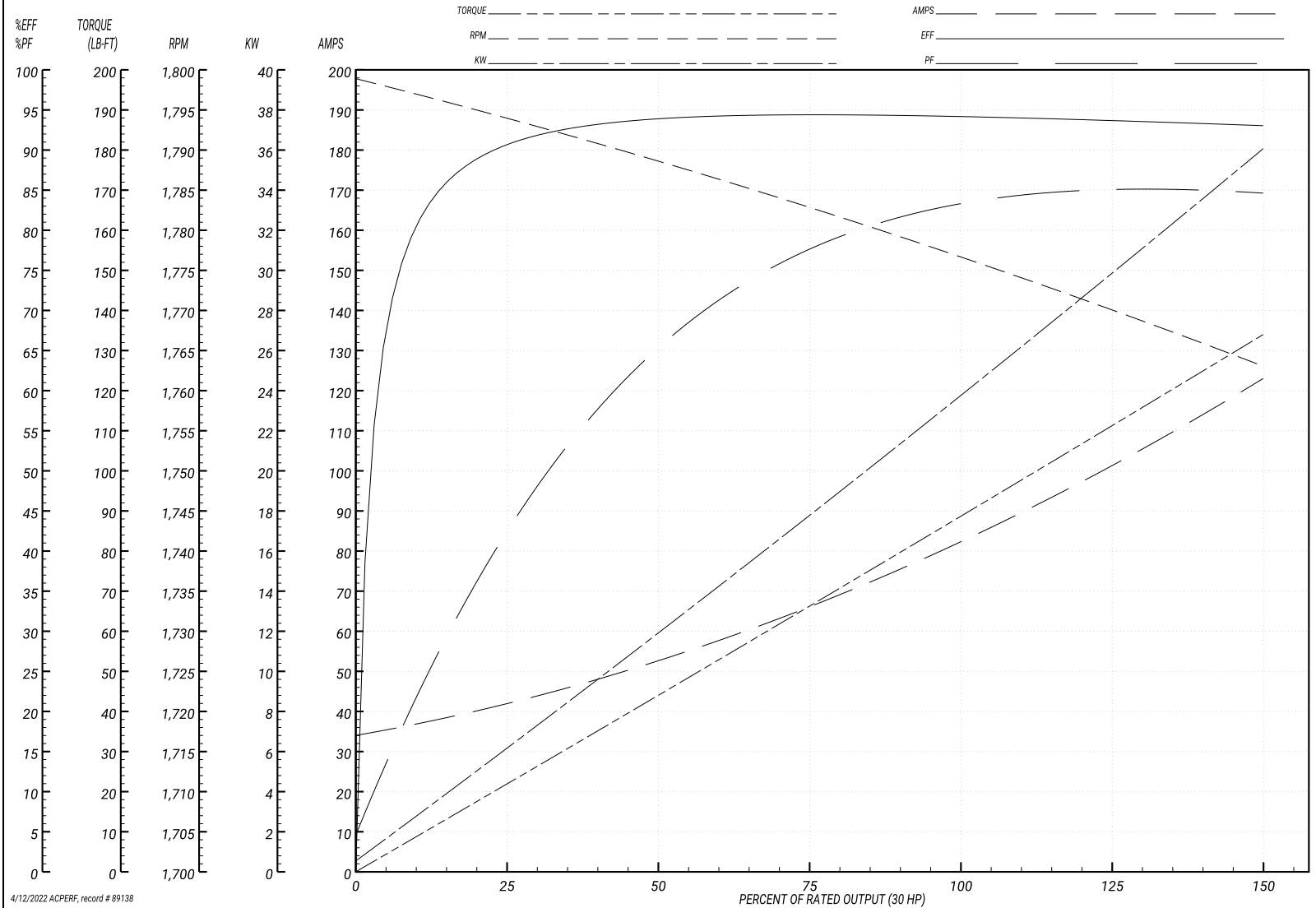
BALDOR ELECTRIC COMPANY

WINDING # 40WGX451

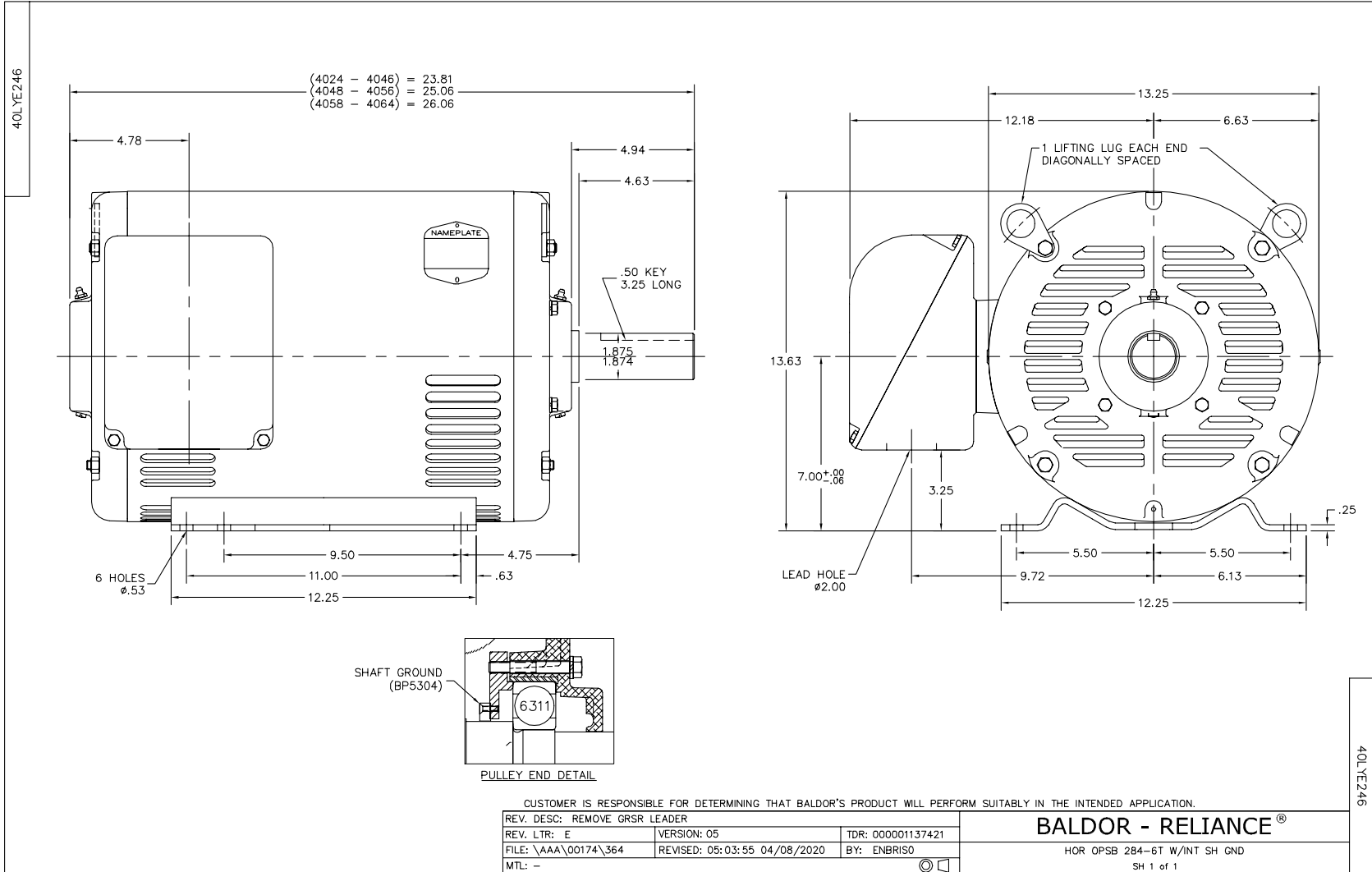
Typical performance - not guaranteed values.

30 HP 3 PH 60 HZ 1775 RPM 200 V 4060M

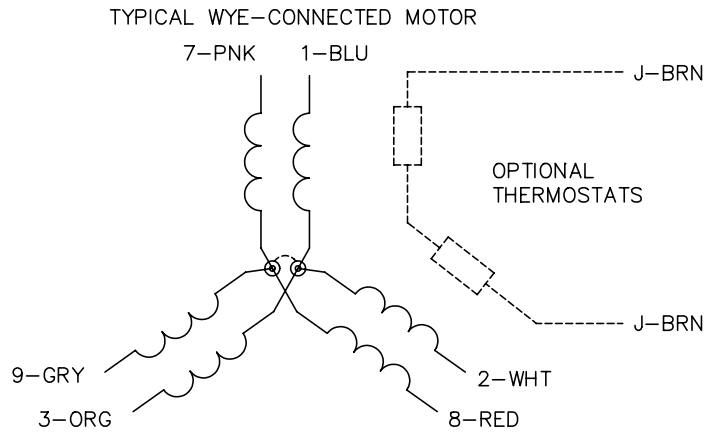
TORQUES(LB-FT): PO=281 PU=131 LR=162 LRA=581



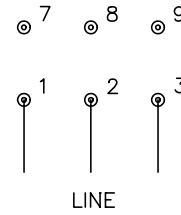
4/12/2022 ACPERF, record # 89138



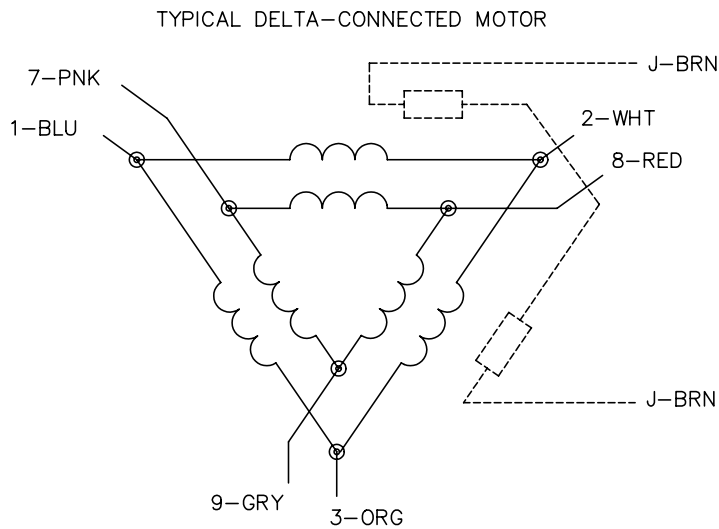
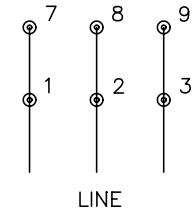
CD0695



START CONNECTION



RUN CONNECTION



NOTES:

1. MOTOR MAY BE WYE CONNECTED OR DELTA CONNECTED.
2. INTERCHANGE ANY TWO LINE LEADS TO REVERSE ROTATION.
3. OPTIONAL THERMOSTATS ARE PROVIDED WHEN SPECIFIED.
4. ACTUAL NUMBER OF INTERNAL PARALLEL CIRCUITS MAY VARY.
5. LEAD COLORS ARE OPTIONAL. LEADS MUST ALWAYS BE NUMBERED AS SHOWN.

REV. DESC: REVISE TO SHOW OPTIONAL COLORS

REV. LTR: C

BY: JLP

REVISED: 01/21/99 3:19

TDR: 0171435

9690D0

FILE: AAA00005151

MDL: -

MTL: -

BALDOR ELECTRIC Co.

3PH, SV, 6 LEADS, PART WINDING START

CD0695

Marketing maintained PDF of MN416:

<http://www.baldor.com/support/Literature/Load.ashx/MN416?ManNumber=MN416>