



---

# Customer information packet

## EM2544T-CI

50HP, 1185RPM, 3PH, 60HZ, 365T, 1466M, OPEN, F1

Class - None

Division - Not Applicable

## Specifications

Enclosure	DP
Frame	365T
Frame Material	Iron
Frequency	60.00 Hz
Motor Letter Type	Three Phase
Output @ Frequency	50.000 HP @ 60 HZ
Phase	3
Synchronous Speed @ Frequency	1200 RPM @ 60 HZ
Voltage @ Frequency	230.0 V @ 60 HZ 460.0 V @ 60 HZ
XP Class and Group	None
XP Division	Not Applicable
Agency Approvals	CSA EEV CCSA US
Ambient Temperature	40 °C
Auxillary Box	No Auxillary Box
Base Indicator	Rigid
Bearing Grease Type	Polyrex EM (-20F +300F)
Current @ Voltage	60.300 A @ 460.0 V 120.000 A @ 230.0 V
Design Code	B
Drip Cover	No Drip Cover
Duty Rating	CONT
Efficiency @ 100% Load	94.1 %
Feedback Device	NO FEEDBACK
Heater Indicator	No Heater
High Voltage Full Load Amps	60.3 a
Insulation Class	F
Inverter Code	Inverter Ready
KVA Code	G
Lifting Lugs	Standard Lifting Lugs
Motor Lead Quantity/Wire Size	3 @ 6 AWG

## Part detail

Revision	N
Type	AC
Mech. spec.	
Base	
Status	PRD/A
Elec. spec.	A36WG0753
Layout	617428-130
Eff. date	04-08-2021
CD Diagram	416820-002
Poles	06
Leads	3#6,6#8
Proprietary	False
Created date	10-19-2010

<b>Motor Standards</b>	NEMA
<b>Motor Type</b>	A36052M
<b>Mounting Arrangement</b>	F1
<b>Number of Poles</b>	6
<b>Overall Length</b>	29.70 IN
<b>Power Factor</b>	83
<b>Pulley End Bearing Type</b>	Ball
<b>Pulley Face Code</b>	Standard
<b>Service Factor</b>	1.15
<b>Shaft Diameter</b>	2.374 IN
<b>Shaft Ground Indicator</b>	No Shaft Grounding
<b>Shaft Rotation</b>	Reversible
<b>Shaft Slinger Indicator</b>	No Slinger
<b>Speed</b>	1185 rpm
<b>Speed Code</b>	Single Speed
<b>Starting Method</b>	Direct on line
<b>Thermal Device - Bearing</b>	None
<b>Thermal Device - Winding</b>	None

**Nameplate**

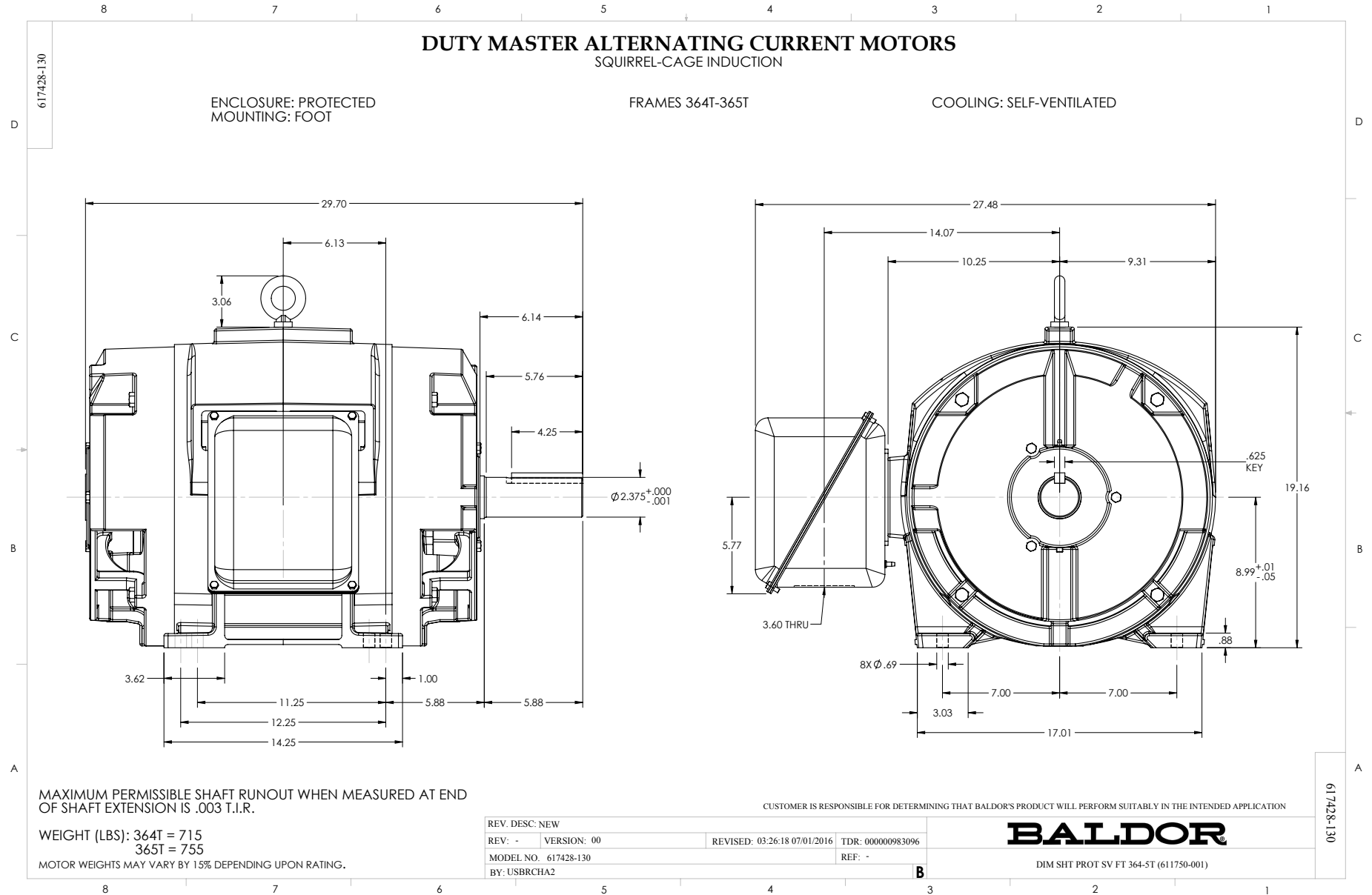
**NP2383L**

<b>CAT.NO.</b>	EM2544T-CI	<b>SPEC NO.</b>	P36G3403						
<b>HP</b>	50	<b>AMPS</b>	120/60.3		<b>VOLTS</b>	230/460	<b>DESIGN</b>	B	
<b>FRAME</b>	365T	<b>RPM</b>	1185	<b>HZ</b>	60	<b>AMB</b>	40	<b>SF</b>	1.15
<b>DRIVE END BEARING</b>	65BC03J30X	<b>PHASE</b>	3	<b>DUTY</b>	CONT	<b>INSUL.CLASS</b>	F		
<b>OPP D.E. BEARING</b>	65BC03J30X	<b>TYPE</b>	P	<b>ENCL</b>	DP	<b>CODE</b>	G		
<b>SER.NO.</b>		<b>POWER FACTOR</b>	83			<b>NEMA-NOM-EFFICIENCY</b>	94.1		
<b>NEMA NOM/CSA QUOTED EFF</b>		<b>MAX CORR KVAR</b>	15.0	<b>GUARANTEED EFFICIENCY</b>	93.6				
		<b>MOTOR WEIGHT</b>							

## Parts list

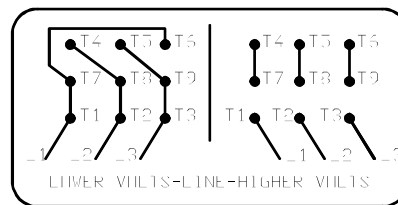
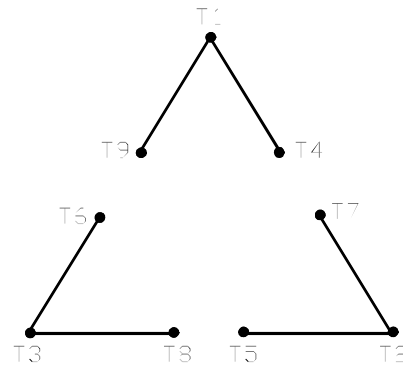
Part number	Description	Quantity
SA209370	SA P36G3403	1.000 ea
RA196632	RA P36G3403	1.000 ea
000613006PU	N/P (RELEASE QTY 10,000) UL CSA LABEL	1.000 ea
000692000VD	LABEL WARNING	1.000 ea
NP2383L	SUPER-E ,SS, CC, CSA-C US, CSA EEV	1.000 ea
421948032	LABEL, MYLAR	1.000 ea
004824015A	GREASE POLYREX EM	0.544 lb
032018024CK	HHCS 3/8-16X3 PLTD.	3.000 ea
032018028DK	HHCS 1/2-13X3-1/2 PLTD.	4.000 ea
032376004JB	RHMS 10-32X1/2PLTD-360	3.000 ea
034001009AB	WSHR #10 PLATED-360	3.000 ea
034017009AB	LCKW NO.10 PLATED-360	3.000 ea
035000001A	ALFTG 1/8" 1610-BL	1.000 ea
034690002AB	PPLG 1/4" PLTD.	1.000 ea
078556001A	BAFFL 360 SUB PAINT	1.000 ea
085920052A	BRKT 360 085920051WCC KB	1.000 ea
410700004F	WSHR	1.000 ea
032018024CK	HHCS 3/8-16X3 PLTD.	3.000 ea
032018028DK	HHCS 1/2-13X3-1/2 PLTD.	4.000 ea
032376004JB	RHMS 10-32X1/2PLTD-360	3.000 ea
034001009AB	WSHR #10 PLATED-360	3.000 ea
034017009AB	LCKW NO.10 PLATED-360	3.000 ea
035000001A	ALFTG 1/8" 1610-BL	1.000 ea
034690002AB	PPLG 1/4" PLTD.	1.000 ea
078556001A	BAFFL 360 SUB PAINT	1.000 ea
085920052A	BRKT 360 085920051WCC KB	1.000 ea
032018005AK	HHCS 1/4-20X5/8 PLATED	4.000 ea
032018008CK	HHCS 3/8-16X1L PLATED	2.000 ea
048897010DG	PLUG,ODE BRKT - 360	1.000 ea
077176000L	C/BOX, PAINTED 440	1.000 ea
077176001A	CBOXC, PAINTED 360-400	1.000 ea

415000115H	T/LUG #2AWG-4/0AWG	1.000 ea
MG1025Y17	WILKOFAST, 789.701, SUPER E PEARL GOLD	0.250 ga
033775004EA	DRSCR #6-1/4 304 S.S.	2.000 ea
034180034HA	KEY 5/8X5/8X4-1/4 L	1.000 ea
032018005DL	1/2-13 X 5/8 SILICON BRONZE HHCS	1.000 ea
14PA1000	PACKAGING 314 GROUP COMBINED PRINT	1.000 ea
043292000AJ	GASK 320-400	1.000 ea
402731001A	GASK 360-440	1.000 ea



416820-002

A-C MOTOR  
 CONNECTION DIAGRAM  
 STANDARD 9 LEAD DELTA-CONNECTED



(N.P. 1575-B)

416820-002

REV. DESC: FONT CHANGE FOR PDF SEARCHABLE		
REV. LTR: A	VERSION: 01	TDR: 000001009382
FILE: \MGA\00000\661	REVISED: 02:46:19 02/13/2020	BY: MGHMTT
MTL: -		© □

**BALDOR - RELIANCE®**

CONN DIAG - STANDARD 9 LEAD, DELTA-CONNECTED

SH 1 of 1