



---

# Customer information packet

## EM2551T-8

75HP, 1780RPM, 3PH, 60HZ, 365T, A36056M, DP, F1

Class - None

Division - Not Applicable

## Specifications

Enclosure	DP
Frame	365T
Frame Material	Iron
Frequency	60.00 Hz
Motor Letter Type	Three Phase
Output @ Frequency	75.000 HP @ 60 HZ
Phase	3
Synchronous Speed @ Frequency	1800 RPM @ 60 HZ
Voltage @ Frequency	200.0 V @ 60 HZ
XP Class and Group	None
XP Division	Not Applicable
Agency Approvals	CSA EEV CCSA US
Ambient Temperature	40 °C
Auxillary Box	No Auxillary Box
Base Indicator	Rigid
Bearing Grease Type	Polyrex EM (-20F +300F)
Current @ Voltage	198.950 A @ 200.0 V
Design Code	B
Drip Cover	No Drip Cover
Duty Rating	CONT
Efficiency @ 100% Load	95.0 %
Feedback Device	NO FEEDBACK
Heater Indicator	No Heater
High Voltage Full Load Amps	199.0 a
Insulation Class	F
Inverter Code	Inverter Ready
KVA Code	G
Lifting Lugs	No Lifting Lugs
Motor Lead Quantity/Wire Size	6 @ 2 AWG
Motor Standards	Other
Motor Type	A36056M

## Part detail

Revision	J
Type	AC
Mech. spec.	
Base	
Status	PRD/A
Elec. spec.	A36WG1039
Layout	611750-501
Eff. date	02-24-2017
CD Diagram	416820-015
Poles	04
Leads	6#2
Proprietary	False
Created date	09-23-2011

<b>Mounting Arrangement</b>	F1
<b>Number of Poles</b>	4
<b>Overall Length</b>	29.70 IN
<b>Power Factor</b>	86
<b>Product Family</b>	Other
<b>Pulley End Bearing Type</b>	Ball
<b>Pulley Face Code</b>	Standard
<b>Service Factor</b>	1.15
<b>Shaft Diameter</b>	2.374 IN
<b>Shaft Ground Indicator</b>	No Shaft Grounding
<b>Shaft Rotation</b>	Reversible
<b>Shaft Slinger Indicator</b>	Shaft Slinger
<b>Speed</b>	1780 rpm
<b>Speed Code</b>	Single Speed
<b>Starting Method</b>	Part Winding
<b>Thermal Device - Bearing</b>	None
<b>Thermal Device - Winding</b>	None

**Nameplate**

**NP2377L**

<b>CAT.NO.</b>	EM2551T-8	<b>SPEC NO.</b>	P36G3422
<b>HP</b>	75	<b>AMPS</b>	199
<b>FRAME</b>	365T	<b>RPM</b>	1780
<b>DRIVE END BEARING</b>	65BC03J30X	<b>PHASE</b>	3
<b>OPP D.E. BEARING</b>	65BC03J30X	<b>TYPE</b>	P
<b>SER.NO.</b>		<b>POWER FACTOR</b>	86
		<b>MAX CORR KVAR</b>	15
		<b>NEMA NOM/CSA QUOTED EFF</b>	
		<b>MOTOR WEIGHT</b>	783

---

**NP2496L**

---

MOBIL POLYREX EM

---

## Parts list

Part number	Description	Quantity
SA231159	SA P36G3422	1.000 ea
RA218176	RA P36G3422	1.000 ea
NP2377L	SS SUPER-E CC CSA-C US CSA-EEV (LASER)	1.000 ea
034180034HA	KEY 5/8X5/8X4-1/4 L	1.000 ea
415045002E	SLGR	1.000 ea
032376004JB	RHMS 10-32X1/2PLTD-360	3.000 ea
032376004JB	RHMS 10-32X1/2PLTD-360	3.000 ea
HW1000A32	5/16 FL WASHER WIDE,ID=.344,OD=1.125	3.000 ea
032509020C	CARRIAGE BOLT - 360	3.000 ea
421948058	LABEL, MYLAR	1.000 ea
035000001A	ALFTG 1/8" 1610-BL	1.000 ea
034690002AB	PPLG 1/4" PLTD.	1.000 ea
034017009AB	LCKW NO.10 PLATED-360	3.000 ea
034001009AB	WSHR #10 PLATED-360	3.000 ea
085920052A	BRKT 360 085920051WCC KB	1.000 ea
085920052A	BRKT 360 085920051WCC KB	1.000 ea
078556001A	BAFFL 360 SUB PAINT	1.000 ea
032018028DK	HHCS 1/2-13X3-1/2 PLTD.	4.000 ea
032018024CK	HHCS 3/8-16X3 PLTD.	3.000 ea
076708000BB	CONDUIT BOX-360	1.000 ea
065776000C	GASKET,MAIN CBOX, 320-400	1.000 ea
076709000A	C/B Cover - 360	1.000 ea
067053000B	GASK 320-400	1.000 ea
032018010CK	HHCS 3/8-16X1-1/4 PLTD. 032018010CR	4.000 ea
033512008LB	HHTTS 1/4-20X1 PLATED	4.000 ea
034000014AB	WSH ID.406 OD.812 TH.065	4.000 ea
415000115H	T/LUG #2AWG-4/0AWG	1.000 ea
078556001A	BAFFL 360 SUB PAINT	1.000 ea
032018028DK	HHCS 1/2-13X3-1/2 PLTD.	4.000 ea
048897010DG	PLUG,ODE BRKT - 360	1.000 ea
048977006J	GRFTG - 440	1.000 ea

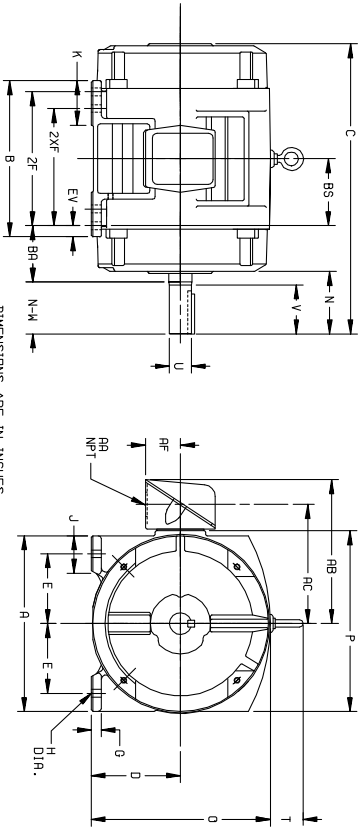
034017009AB	LCKW NO.10 PLATED-360	3.000 ea
032018024CK	HHCS 3/8-16X3 PLTD.	3.000 ea
034001009AB	WSHR #10 PLATED-360	3.000 ea
035000001A	ALFTG 1/8" 1610-BL	1.000 ea
034690002AB	PPLG 1/4" PLTD.	1.000 ea
410700004F	WSHR	1.000 ea
033775004EA	DRSCR #6-1/4 304 S.S.	2.000 ea
000613006PU	N/P (RELEASE QTY 10,000) UL CSA LABEL	1.000 ea
000692000VD	LABEL WARNING	1.000 ea
004824015A	GREASE POLYREX EM	0.540 lb
MG1025Y17	WILKOFAS, 789.701, SUPER E PEARL GOLD	0.250 ga
NP2496L	MOTOR LUBE NAMEPLATE	1.000 ea
14PA1000	PACKAGING 314 GROUP COMBINED PRINT	1.000 ea
032018005DL	1/2-13 X 5/8 SILICON BRONZE HHCS	1.000 ea

**Accessories**

<b>Part number</b>	<b>Description</b>	<b>Multiplier</b>
14-1401	C FACE KIT	A8
14EP1601A01SP	D-FLANGE KIT	



DUTY MASTER ALTERNATING CURRENT MOTORS  
 SQUIRREL-CAGE INDUCTION  
 CAST IRON CONSTRUCTION  
 ENCLOSURE: PROTECTED  
 MOUNTING: FOOT  
 COOLING: SELF-VENTILATED  
 FRAMES 250T THRU 440T



DIMENSIONS ARE IN INCHES

FRAME	A	D(2)	E	G	H	J	K	Q	P	T	AA	AB	AC	AF	BA	EV
254T-256T	12.50	6.25	5.00	.69	.56	2.25	3.50	12.61	12.69	2.44	1-1/4	10.25	8.25	2.50	4.25	.62
284T-286T	14.00	7.00	5.50	.75	.56	2.75	3.75	14.12	14.31	2.44	1-1/2	12.06	9.62	3.19	4.75	1.00
324T-326T	15.75	8.00	6.25	.89	.69	3.12	4.00	16.10	16.42	2.44	2	14.75	11.00	3.62	5.25	1.00
364T-366T	17.00	9.00	7.00	.88	.69	3.00	3.62	18.30	19.56	2.94	3	18.00	13.81	4.12	5.88	1.00
404T-406T	19.00	10.00	8.00	1.12	.81	3.25	4.75	20.56	21.81	2.94	3	19.00	14.81	4.12	6.62	1.12
444T-446T	21.00	11.00	9.00	1.12	.81	3.25	5.25	22.91	23.62	3.25	3	21.44	16.89	5.00	7.50	1.25

FRAME	C	RS	B	ZF	EV	N	N-V(6)	U(3)	V	SQ.	LGTH.	WEIGHT
SIZE					(4)							LBS. (3)
254T	22.44	5.00	11.25	---	8.25	4.25	4.00	1.625	3.75	3.75	2.75	2.65
284T	22.44	5.00	11.25	10.00	---	4.25	4.00	1.625	3.75	3.75	2.75	2.75
324T	23.56	5.50	13.00	---	9.50	4.88	4.62	1.875	4.38	5.00	3.25	3.40
364T	23.56	5.50	13.00	---	9.50	3.25	3.62	1.625	3.00	3.75	1.88	3.40
404T	24.94	5.50	13.00	11.00	---	4.62	4.62	1.875	4.38	5.00	3.25	3.70
444T	25.56	2.50	13.00	11.00	---	3.50	3.62	1.625	3.00	3.75	3.98	4.80
254T	52.62	4.00	14.00	---	10.50	2.50	2.52	1.52	3.50	5.00	2.00	7.20
284T	52.62	4.00	14.00	---	10.50	2.50	2.52	1.52	3.50	5.00	2.00	7.20
324T	52.62	4.00	14.00	12.00	---	4.00	3.75	1.975	3.50	5.00	3.70	5.80
364T	59.70	4.12	14.25	---	11.25	4.12	3.98	2.275	5.2	6.25	4.20	7.20
404T	59.70	4.12	14.25	---	11.25	4.12	3.98	2.275	5.2	6.25	4.20	7.20
444T	61.2	4.25	12.25	---	4.00	3.75	1.875	3.50	5.00	5.00	2.00	7.70
365T	27.58	6.12	14.25	12.25	---	4.00	3.75	1.875	3.50	5.00	2.00	7.70
404T	34.00	6.88	16.00	---	12.25	4.62	4.25	2.875	7.00	7.50	5.50	10.45
444T	34.00	6.88	16.00	---	12.25	4.62	4.25	2.875	7.00	7.50	5.50	10.45
405T	34.00	6.88	16.00	13.75	---	7.62	7.25	2.125	4.00	5.00	2.75	10.85
444T	39.56	8.25	19.00	---	14.50	8.94	8.50	3.375	8.25	8.75	6.88	17.25
444T	39.56	8.25	19.00	---	14.50	8.94	8.50	3.375	8.25	8.75	6.88	17.25
445T	39.56	8.25	19.00	16.50	---	8.94	8.50	3.375	8.25	8.75	6.88	17.75
445T	39.56	8.25	19.00	16.50	---	8.94	8.50	3.375	8.25	8.75	6.88	17.75

- (1) SPECIAL DIMENSIONS APPLYING TO THIS ORDER ON THIS LINE.
  - (2) 'DP' VARIES --- [ 360T - 320T +0.0, -0.3.
  - (3) 'U' VARIES +0.00, -.001
  - (4) ALL FRAMES HAVE EIGHT MOUNTING HOLES FOR DUAL MOUNTING.
  - (5) MOTOR WEIGHTS MAY VARY BY 15% DEPENDING UPON RATING.
  - (6) 'N-V' VARIES +0.0, -.25.
- CONDUIT BOX LOCATED ON OPPOSITE SIDE WHEN F-2-W-1, V-4-W-5-W-7, DR C-1 MOUNTING IS SPECIFIED.

IF MOUNTING CLEARANCE DETAILS ARE REQUIRED, CONSULT FACTORY.

MAXIMUM PERMISSIBLE SHAFT RUNOUT WHEN MEASURED AT END OF STD. SHAFT EXTENSION IS .002 T.I.R. UP TO AND INCLUDING 1.625 DIA. AND .003 T.I.R. ABOVE 1.625 TO 5 INCH DIA.

FRAME --- TYPE --- CERTIFIED FOR ---  
 ORDER --- ITEM --- HP --- RPM --- PH --- HZ --- VOLTS ---  
 SALES ORDER --- APPROVED BY --- DATE ---

105-051119

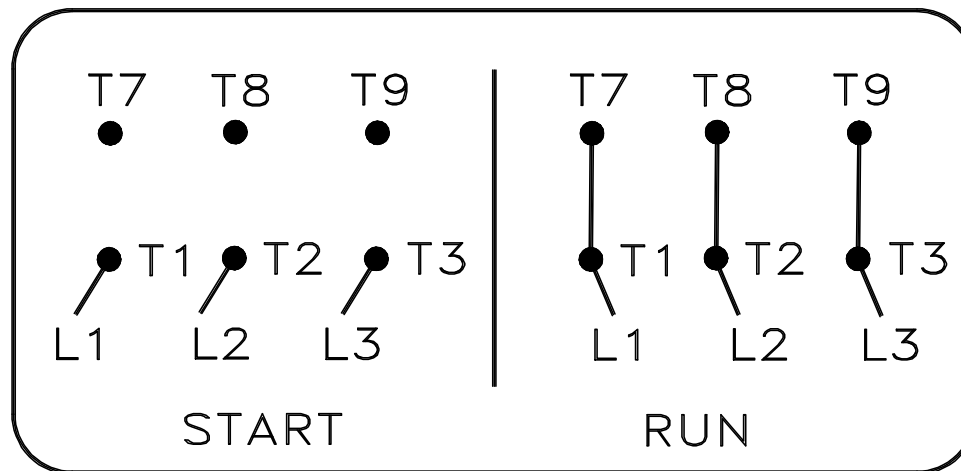
CUSTOMER IS RESPONSIBLE FOR DETERMINING THAT BALDOR'S PRODUCT WILL PERFORM SUITABLY IN THE INTENDED APPLICATION.

REV. DESC: LOADED TO BUS	VERSION: 01	TDR: 000000546464
FILE: \RAG\00009\279	REVISED: 03:18:49 06/22/2010	BY: RAGHZT
MTL: -		



416820-015

# A-C MOTOR CONNECTION DIAGRAM PART WINDING START



(N.P. 1767-1-A)

REV. DESC: -ADDED JUMPERS TO "RUN" CONNECTIONS		
REV. LTR: A	VERSION: 01	TDR: 00000558689
FILE: \MGA\00000\668	REVISED: 09:44:55 09/20/2010	
MTL: -	BY: MGH TLC	

**BALDOR**

CONN DIAG - PART WINDING START  
SH 1 of 1

416820-015