

**BALDOR • RELIANCE**

---

# Customer information packet

## EM2552T-4

75HP, 1185RPM, 3PH, 60HZ, 405T, ODP, FOOT,  
Class - None  
Division - Not Applicable

## Specifications

Enclosure	DP
Frame	405T
Frame Material	Iron
Frequency	60.00 Hz
Motor Letter Type	Three Phase
Output @ Frequency	75.000 HP @ 60 HZ
Phase	3
Synchronous Speed @ Frequency	1200 RPM @ 60 HZ
Voltage @ Frequency	460.0 V @ 60 HZ
XP Class and Group	None
XP Division	Not Applicable
Agency Approvals	CSA EEV CCSA US
Ambient Temperature	40 °C
Auxillary Box	No Auxillary Box
Base Indicator	Rigid
Bearing Grease Type	Polyrex EM (-20F +300F)
Current @ Voltage	86.900 A @ 460.0 V
Design Code	B
Drip Cover	No Drip Cover
Duty Rating	CONT
Efficiency @ 100% Load	95.0 %
Feedback Device	NO FEEDBACK
Heater Indicator	No Heater
High Voltage Full Load Amps	86.9 a
Insulation Class	F
Inverter Code	Inverter Ready
KVA Code	G
Lifting Lugs	No Lifting Lugs
Motor Lead Quantity/Wire Size	6 @ 6 AWG
Motor Standards	NEMA
Motor Type	A40064M

## Part detail

Revision	P
Type	AC
Mech. spec.	
Base	
Status	PRD/A
Elec. spec.	A40WG0466
Layout	611750-001
Eff. date	04-08-2021
CD Diagram	416820-008
Poles	06
Leads	6#6
Proprietary	False
Created date	10-19-2010

<b>Mounting Arrangement</b>	F1
<b>Number of Poles</b>	6
<b>Power Factor</b>	85
<b>Pulley End Bearing Type</b>	Ball
<b>Pulley Face Code</b>	Standard
<b>Service Factor</b>	1.15
<b>Shaft Diameter</b>	2.875 IN
<b>Shaft Ground Indicator</b>	No Shaft Grounding
<b>Shaft Rotation</b>	Reversible
<b>Shaft Slinger Indicator</b>	No Slinger
<b>Speed</b>	1185 rpm
<b>Speed Code</b>	Single Speed
<b>Starting Method</b>	Wye Start - Delta Run
<b>Thermal Device - Bearing</b>	None
<b>Thermal Device - Winding</b>	None

**Nameplate**

**NP2383L**

<b>CAT.NO.</b>	EM2552T-4	<b>SPEC NO.</b>	P40G302						
<b>HP</b>	75	<b>AMPS</b>	86.9	<b>VOLTS</b>	460	<b>DESIGN</b>	B		
<b>FRAME</b>	405T	<b>RPM</b>	1185	<b>HZ</b>	60	<b>AMB</b>	40	<b>SF</b>	1.15
<b>DRIVE END BEARING</b>	80BC03J30X	<b>PHASE</b>	3	<b>DUTY</b>	CONT	<b>INSUL.CLASS</b>	F		
<b>OPP D.E. BEARING</b>	80BC03J30X	<b>TYPE</b>	P	<b>ENCL</b>	DP	<b>CODE</b>	G		
<b>SER.NO.</b>		<b>POWER FACTOR</b>	85	<b>NEMA-NOM-EFFICIENCY</b>	95				
<b>NEMA NOM/CSA QUOTED EFF</b>		<b>MAX CORR KVAR</b>	15.0	<b>GUARANTEED EFFICIENCY</b>	94.5				
		<b>MOTOR WEIGHT</b>							

## Parts list

Part number	Description	Quantity
SA209231	SA P40G302	1.000 ea
RA196493	RA P40G302	1.000 ea
000613006PU	N/P (RELEASE QTY 10,000) UL CSA LABEL	1.000 ea
000692000VD	LABEL WARNING	1.000 ea
NP2383L	SUPER-E ,SS, CC, CSA-C US, CSA EEV	1.000 ea
421948044	LABEL, MYLAR	1.000 ea
004824015A	GREASE POLYREX EM	0.884 lb
032018005AK	HHCS 1/4-20X5/8 PLATED	4.000 ea
032018020DK	HHCS 1/2-13X2-1/2 PLTD. 963746	2.000 ea
032018026DK	HHCS 1/2-13X3-1/4L PLTD.	2.000 ea
032018030CK	HHCS 3/8-16X3-3/4 PLATED	3.000 ea
034000012AB	WSHR 1/4 STD. PLATED	4.000 ea
034017012AB	LCKW 1/4 STD. PLATED 034017012AF	4.000 ea
034600001AA	BUSH 1/4TO1/8 BLACK	1.000 ea
035000001G	GREASE RELIEF FITTING, ALEMITE 317400	1.000 ea
089407052A	BRKT 400 089407052WCB	1.000 ea
702609001A	BAFFL 400 SUB PAINT	1.000 ea
089407052A	BRKT 400 089407052WCB	1.000 ea
410700000DA	WAVY SPRING WASHER	1.000 ea
702609001A	BAFFL 400 SUB PAINT	1.000 ea
032018005AK	HHCS 1/4-20X5/8 PLATED	4.000 ea
032018020DK	HHCS 1/2-13X2-1/2 PLTD. 963746	2.000 ea
032018026DK	HHCS 1/2-13X3-1/4L PLTD.	2.000 ea
032018030CK	HHCS 3/8-16X3-3/4 PLATED	3.000 ea
034000012AB	WSHR 1/4 STD. PLATED	4.000 ea
034017012AB	LCKW 1/4 STD. PLATED 034017012AF	4.000 ea
034600001AA	BUSH 1/4TO1/8 BLACK	1.000 ea
035000001G	GREASE RELIEF FITTING, ALEMITE 317400	1.000 ea
032018004AK	HHCS 1/4-20X1/2 PLATED	4.000 ea
032018008CK	HHCS 3/8-16X1L PLATED	4.000 ea
035000001A	ALFTG 1/8" 1610-BL	1.000 ea

035000001A	ALFTG 1/8" 1610-BL	1.000 ea
048897010DH	BUSH - 400	1.000 ea
077176000L	C/BOX, PAINTED 440	1.000 ea
077176001A	CBOXC, PAINTED 360-400	1.000 ea
415000115H	T/LUG #2AWG-4/0AWG	1.000 ea
418150003A	GREASE FITTING CAP	1.000 ea
MG1025Y17	WILKOFAS, 789.701, SUPER E PEARL GOLD	0.250 ga
418150003A	GREASE FITTING CAP	1.000 ea
033775004EA	DRSCR #6-1/4 304 S.S.	4.000 ea
034180044JA	KEY 3/4X3/4X5-1/2 L	1.000 ea
032018005DL	1/2-13 X 5/8 SILICON BRONZE HHCS	1.000 ea
PK5004A02	WOOD BASE 40X32 STACK 2X4 RUNNER	1.000 ea

**Accessories**

<b>Part number</b>	<b>Description</b>	<b>Multiplier</b>
089407053B	C-FACE BRKT 400 089407053WCA	P1
089407054B	D-FLANGE BRKT 400 089407054WCA, D-FLG	

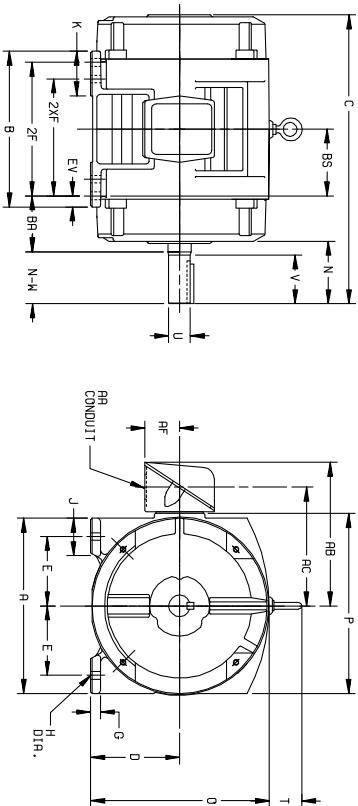
# DUTY MASTER ALTERNATING CURRENT MOTORS

SQUIREL-CAGE INDUCTION

ENCLOSURE: PROTECTED  
MOUNTING: FOOT

COOLING: SELF-VENTILATED

FRAMES 250T THRU 440T



DIMENSIONS ARE IN INCHES

FRAME	A	D(2)	E	C	H	J	K	O	P	T	STEEL TERMINAL BOX				BA	EV
											AA	AB	AC	AF		
254I-258T	12.30	6.25	5.00	.69	.58	2.25	3.50	12.61	12.69	2.44	1-1/4	10.19	8.19	2.50	4.25	.62
284I-288TS	14.00	7.00	5.50	.75	.56	2.75	3.75	14.12	14.31	2.44	1-1/2	12.19	9.44	3.19	4.75	1.00
324I-326TS	15.75	8.00	6.25	.88	.69	3.12	4.00	16.10	16.42	2.44	2	14.25	10.75	4.25	5.25	1.00
364I-365TS	17.00	9.00	7.00	.88	.69	3.00	3.62	18.30	19.56	2.94	3	18.06	14.00	5.38	5.88	1.00
404I-405TS	19.00	10.00	8.00	1.12	.81	3.25	4.75	20.56	21.81	2.94	3	19.06	15.00	4.38	6.62	1.12
444I-445TS	21.00	11.00	9.00	1.12	.81	3.25	5.25	22.91	23.62	3.25	3	22.62	17.38	5.50	7.50	1.25

FRAME	C	BS	B	2F	(4)	N	(N-W)(6)	(3)	SHAFT AND KEY	5/8	3/4	1/2	1/4	3/16	1/8	1/16	WGT
																	(LBS.)
254I	22.44	5.00	11.52	10.00	8.25	4.25	4.00	1.625	3.75	.375	.275	.275	.275	.275	.275	.275	292
284I	24.94	5.50	13.00	11.00	9.50	4.88	4.62	1.875	4.38	.500	.500	.500	.500	.500	.500	.500	340
324I	23.84	5.50	13.00	11.00	9.50	3.50	3.25	1.625	3.00	.375	.375	.375	.375	.375	.375	.375	340
364I	24.94	5.50	13.00	11.00	9.50	4.88	4.62	1.875	4.38	.500	.500	.500	.500	.500	.500	.500	370
404I	23.56	5.50	13.00	11.00	9.50	3.25	3.25	1.625	3.00	.375	.375	.375	.375	.375	.375	.375	465
444I	27.56	6.00	14.00	12.00	10.50	5.50	5.25	2.125	5.00	.500	.500	.500	.500	.500	.500	.500	505
326TS	27.56	6.00	14.00	12.00	10.50	5.25	2.125	2.125	5.00	.500	.500	.500	.500	.500	.500	.500	505
364TS	29.70	6.12	14.25	12.25	11.25	6.12	5.88	2.375	5.62	.625	.625	.625	.625	.625	.625	.625	715
365TS	27.58	6.12	14.25	12.25	11.25	6.12	5.88	2.375	5.62	.625	.625	.625	.625	.625	.625	.625	755
365TS	27.58	6.12	14.25	12.25	11.25	6.12	5.88	2.375	5.62	.625	.625	.625	.625	.625	.625	.625	750
404TS	31.00	6.88	16.00	14.00	12.25	7.62	7.25	2.875	7.00	.750	.750	.750	.750	.750	.750	.750	1025
405TS	31.00	6.88	16.00	14.00	12.25	7.62	7.25	2.875	7.00	.750	.750	.750	.750	.750	.750	.750	1065
444TS	39.56	8.25	19.00	17.00	14.50	8.25	8.50	3.375	8.25	.875	.875	.875	.875	.875	.875	.875	1715
445TS	39.56	8.25	19.00	17.00	14.50	8.25	8.50	3.375	8.25	.875	.875	.875	.875	.875	.875	.875	1755
445TS	35.81	8.25	19.00	16.50	14.50	5.19	4.75	2.375	4.50	.625	.625	.625	.625	.625	.625	.625	1750

(1)

- (1) SPECIAL DIMENSIONS APPLYING TO THIS ORDER ON THIS LINE. CONDUIT BOX LOCATED ON OPPOSITE SIDE WHEN F-2-W-1, W-4-W-5-W-7, OR C-1 MOUNTING IS SPECIFIED.
- (2) "D" VARIES [ 250T - 320T +.00, -.03, 360T - 440T +.00, -.06.
- (3) "U" VARIES +.000, -.001 IF MOUNTING CLEARANCE DETAILS ARE REQUIRED. CONSULT FACTORY.
- (4) ALL FRAMES HAVE EIGHT MOUNTING HOLES FOR DUAL MOUNTING. MAXIMUM PERMISSIBLE SHAFT RUNOUT WHEN MEASURED AT END OF STD. SHAFT EXTENSION IS .002 T.I.R. UP TO AND INCLUDING 1.625 DIA. AND .003 T.I.R. ABOVE 1.625 TO 5 INCH DIA.
- (5) MOTOR WEIGHTS MAY VARY BY 15% DEPENDING UPON RATING.

FRAME - "N-W" VARIES +.00, -.25 PER -  
 ORDER - ITEM - HP - CERTIFIED FOR - RPM - APPROVED BY - PH - HZ - VOLTS -  
 SALES ORDER - DATE

100-051119

CUSTOMER IS RESPONSIBLE FOR DETERMINING THAT BALDOR'S PRODUCT WILL PERFORM SUITABLY IN THE INTENDED APPLICATION.

REV. DESC: ASSIGNED TO BUSLOAD	VERSION: 01	TDR: 00000489455
FILE: \RAG\00008\297	REVISED: 15:03:33 02/02/2009	BY: RAG:JR
MTL: -		

**Baldor • Dodge • Reliance**

DIM SHT PROT SV FT 250-440T

SH 1 of 1

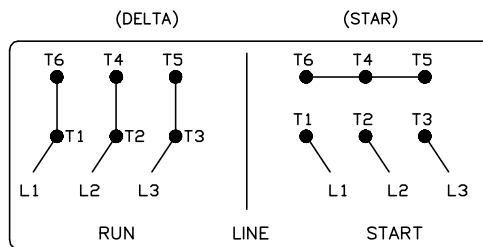
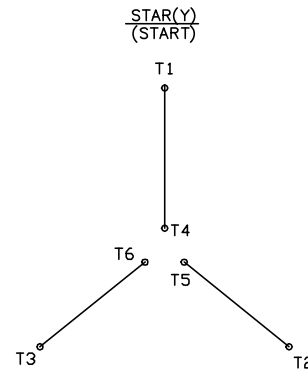
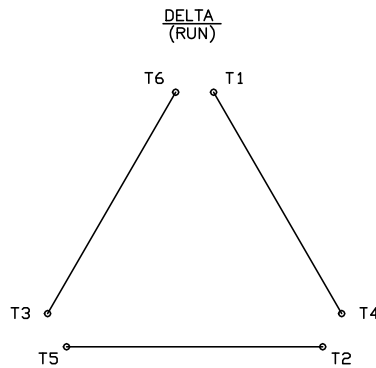


416820-008

# A-C MOTOR CONNECTION DIAGRAM

STANDARD 6 LEAD

Y START – DELTA RUN



< N. P. 1767-DC >

REV. DESC: ADDED T4 TO Y CONNECT DIAGRAM		
REV. LTR: D	VERSION: 04	TDR: 00000847713
FILE: \RAG\00001\808	REVISED: 10: 41: 26 04/08/2014	BY: RAGJSS1
MTL: -	© □	

**BALDOR**

CONNECT DIAGRAM STD 6 LEAD Y START DELTA RUN

SH 1 of 1

416820-008