

BALDOR • RELIANCE

Customer information packet

EM2554T-4CI

125HP, 3565RPM, 3PH, 60HZ, 404TS, ODP, FOOT,
Class - None
Division - Not Applicable

Specifications

Enclosure	DP
Frame	404TS
Frame Material	Iron
Frequency	60.00 Hz
Motor Letter Type	Three Phase
Output @ Frequency	125.000 HP @ 60 HZ
Phase	3
Synchronous Speed @ Frequency	3600 RPM @ 60 HZ
Voltage @ Frequency	460.0 V @ 60 HZ
XP Class and Group	None
XP Division	Not Applicable
Agency Approvals	CSA EEV CCSA US
Ambient Temperature	40 °C
Auxillary Box	No Auxillary Box
Base Indicator	Rigid
Bearing Grease Type	Polyrex EM (-20F +300F)
Current @ Voltage	143.000 A @ 460.0 V
Design Code	B
Drip Cover	No Drip Cover
Duty Rating	CONT
Efficiency @ 100% Load	95.0 %
Feedback Device	NO FEEDBACK
Heater Indicator	No Heater
High Voltage Full Load Amps	143.0 a
Insulation Class	F
Inverter Code	Inverter Ready
KVA Code	F
Lifting Lugs	No Lifting Lugs
Motor Lead Quantity/Wire Size	3 @ 2 AWG
Motor Standards	NEMA
Motor Type	A40048M

Part detail

Revision	H
Type	AC
Mech. spec.	
Base	
Status	PRD/A
Elec. spec.	A40WG0224
Layout	611750-501
Eff. date	02-05-2018
CD Diagram	416820-036
Poles	02
Leads	3#2
Proprietary	False
Created date	10-19-2010

Mounting Arrangement	F1
Number of Poles	2
Power Factor	86
Pulley End Bearing Type	Ball
Pulley Face Code	C-Face
Service Factor	1.15
Shaft Diameter	2.125 IN
Shaft Ground Indicator	No Shaft Grounding
Shaft Rotation	Reversible
Shaft Slinger Indicator	No Slinger
Speed	3565 rpm
Speed Code	Single Speed
Starting Method	Direct on line
Thermal Device - Bearing	None
Thermal Device - Winding	None

Nameplate

NP2383L

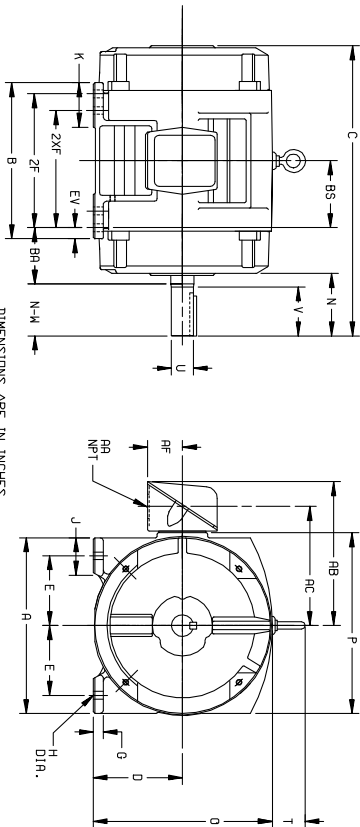
CAT.NO.	EM2554T-4CI	SPEC NO.	P40G295								
HP	125	AMPS	143	VOLTS	460	DESIGN	B				
FRAME	404TS	RPM	3565	HZ	60	AMB	40	SF	1.15		
DRIVE END BEARING	65BC03J30X	PHASE	3	DUTY	CONT	INSUL.CLASS	F				
OPP D.E. BEARING	65BC03J30X	TYPE	P	ENCL	DP	CODE	F				
SER.NO.		POWER FACTOR	86	NEMA-NOM-EFFICIENCY	95						
		MAX CORR KVAR	25.0	GUARANTEED EFFICIENCY	94.5						
NEMA NOM/CSA QUOTED EFF											
		MOTOR WEIGHT									

Parts list

Part number	Description	Quantity
SA209223	SA P40G295	1.000 ea
RA196485	RA P40G295	1.000 ea
000613006PU	N/P (RELEASE QTY 10,000) UL CSA LABEL	1.000 ea
000692000VD	LABEL WARNING	1.000 ea
NP2383L	SUPER-E ,SS, CC, CSA-C US, CSA EEV	1.000 ea
032018012AK	HHCS 1/4-20X1-1/2 PLTD.	4.000 ea
032018020DK	HHCS 1/2-13X2-1/2 PLTD. 963746	2.000 ea
032018026DK	HHCS 1/2-13X3-1/4L PLTD.	2.000 ea
032018028CK	HHCS 3/8-16X3-1/2 PLTD.	3.000 ea
034000012AB	WSHR 1/4 STD. PLATED	4.000 ea
034017012AB	LCKW 1/4 STD. PLATED 034017012AF	4.000 ea
034600001AA	BUSH 1/4TO1/8 BLACK	1.000 ea
035000001G	GREASE RELIEF FITTING, ALEMITE 317400	1.000 ea
089407082A	BRKT 400 089407081WCB	1.000 ea
405851012AF	SPACE	4.000 ea
410700004F	WSHR	1.000 ea
702609001A	BAFFL 400 SUB PAINT	1.000 ea
702609001A	BAFFL 400 SUB PAINT	1.000 ea
405851012AF	SPACE	4.000 ea
034600001AA	BUSH 1/4TO1/8 BLACK	1.000 ea
035000001G	GREASE RELIEF FITTING, ALEMITE 317400	1.000 ea
089407082A	BRKT 400 089407081WCB	1.000 ea
034000012AB	WSHR 1/4 STD. PLATED	4.000 ea
034017012AB	LCKW 1/4 STD. PLATED 034017012AF	4.000 ea
032018028CK	HHCS 3/8-16X3-1/2 PLTD.	3.000 ea
032018026DK	HHCS 1/2-13X3-1/4L PLTD.	2.000 ea
032018020DK	HHCS 1/2-13X2-1/2 PLTD. 963746	2.000 ea
032018012AK	HHCS 1/4-20X1-1/2 PLTD.	4.000 ea
004824015A	GREASE POLYREX EM	1.000 lb
032018010CK	HHCS 3/8-16X1-1/4 PLTD. 032018010CR	4.000 ea
033512008LB	HHTTS 1/4-20X1 PLATED	4.000 ea

035000001A	ALFTG 1/8" 1610-BL	1.000 ea
035000001A	ALFTG 1/8" 1610-BL	1.000 ea
048897010DG	PLUG,ODE BRKT - 360	1.000 ea
065776000V	GASKET, C/B 5.75 SQ	1.000 ea
067053000B	GASK 320-400	1.000 ea
076708000BB	CONDUIT BOX-360	1.000 ea
076709000A	C/B Cover - 360	1.000 ea
415000115H	T/LUG #2AWG-4/0AWG	1.000 ea
418150003A	GREASE FITTING CAP	1.000 ea
033775004EA	DRSCR #6-1/4 304 S.S.	2.000 ea
418150003A	GREASE FITTING CAP	1.000 ea
034180022GA	KEY 1/2X1/2X2-3/4 L	1.000 ea
PK5004A02	WOOD BASE 40X32 STACK 2X4 RUNNER	1.000 ea
MG1025N19	WILKO 778.50 BLUE GREEN - 55 GAL DRUMS	0.250 ga
004824003CBY	WILKO PAINT 060.02 - ACTIVATOR	0.063 ga
421948051	LABEL, MYLAR	1.000 ea
N424002603DBA	LEAD SET 2-1 AWG 6-DB 400 FR 60 IN	1.000 ea
032018005DL	1/2-13 X 5/8 SILICON BRONZE HHCS	1.000 ea

DUTY MASTER ALTERNATING CURRENT MOTORS
 SQUIRREL-CAGE INDUCTION
 CAST IRON CONSTRUCTION
 ENCLOSURE: PROTECTED
 MOUNTING: FOOT
 COOLING: SELF-VENTILATED
 FRAMES 250T THRU 440T



DIMENSIONS ARE IN INCHES

FRAME	A	D(2)	E	G	H	J	K	Q	P	T	AA	AB	AC	AF	BA	EV
254T-256T	12.50	6.25	5.00	.69	.56	2.25	3.50	12.61	12.69	2.44	1-1/4	10.25	8.25	2.50	4.25	.62
284T-286TS	14.00	7.00	5.50	.75	.56	2.75	3.75	14.12	14.31	2.44	1-1/2	12.06	9.62	3.19	4.75	1.00
324T-326TS	15.75	8.00	6.25	.89	.69	3.12	4.00	16.10	16.42	2.44	2	14.75	11.00	3.62	5.25	1.00
364T-366TS	17.00	9.00	7.00	.88	.69	3.00	3.62	18.30	19.56	2.94	2	18.00	13.81	4.12	5.88	1.00
404T-406TS	19.00	10.00	8.00	1.12	.81	3.25	4.75	20.56	21.81	2.94	3	19.00	14.81	3.12	6.62	1.12
444T-446TS	21.00	11.00	9.00	1.12	.81	3.25	5.25	22.91	23.62	3.25	3	21.44	16.69	5.00	7.50	1.25

FRAME	C	RS	B	ZF	2XF	N	(4)	N	N-V(6)	U(3)	V	SQ.	LGTH.	WEIGHT
SIZE														LBS. (3)
254T	22.44	5.00	11.25	---	8.25	4.25	---	4.00	1.625	3.75	3.75	2.75	2.75	2.65
256T	22.44	5.00	11.25	10.00	---	4.25	4.00	1.625	3.75	3.75	3.75	2.75	2.75	2.75
284T	24.94	5.50	13.00	---	9.50	4.88	---	4.00	1.875	4.38	5.00	3.25	3.40	3.40
286TS	23.56	5.50	13.00	---	9.50	3.25	3.62	1.625	3.00	3.75	1.88	3.40	3.40	3.40
324T	24.94	5.50	13.00	11.00	---	4.88	4.62	1.875	4.38	5.00	3.25	3.25	3.70	3.70
326TS	23.56	5.50	13.00	11.00	---	3.50	3.62	1.625	3.00	3.75	3.00	3.25	3.70	3.70
364T	27.58	6.12	14.25	---	10.50	5.25	---	3.25	1.562	3.50	5.00	3.00	4.80	4.80
366TS	26.26	6.12	14.00	---	10.50	4.00	---	3.25	1.975	3.50	5.00	3.70	5.80	5.80
404T	29.70	6.12	14.25	---	11.25	4.00	---	3.25	1.975	3.50	5.00	3.70	7.20	7.20
406TS	27.58	6.12	14.25	12.25	---	4.00	4.00	1.875	3.75	3.50	5.00	4.25	7.70	7.70
444T	27.58	6.12	14.25	12.25	---	4.00	4.00	1.875	3.75	3.50	5.00	4.25	7.70	7.70
446TS	27.58	6.12	14.25	12.25	---	4.00	4.00	1.875	3.75	3.50	5.00	4.25	7.70	7.70
484T	34.00	6.88	16.00	---	12.25	4.62	---	3.25	2.275	5.62	6.25	4.25	10.45	10.45
486TS	31.00	6.88	16.00	---	12.25	4.25	---	3.25	2.275	5.62	6.25	4.25	10.45	10.45
524T	34.00	6.88	16.00	13.75	---	4.62	4.25	2.125	4.00	7.50	5.50	5.50	10.65	10.65
526TS	31.00	6.88	16.00	13.75	---	4.25	4.25	2.125	4.00	7.50	5.50	5.50	10.65	10.65
564T	39.56	8.25	19.00	---	14.50	8.94	---	4.75	2.375	8.25	8.75	6.88	17.25	17.25
566TS	35.81	8.25	19.00	---	14.50	5.19	---	4.75	2.375	8.25	8.75	6.88	17.25	17.25
604T	39.56	8.25	19.00	16.50	---	8.94	---	4.75	2.375	8.25	8.75	6.88	17.25	17.25
606TS	35.81	8.25	19.00	16.50	---	5.19	---	4.75	2.375	8.25	8.75	6.88	17.25	17.25

- (1) SPECIAL DIMENSIONS APPLYING TO THIS ORDER ON THIS LINE.
- (2) 'D' VARIES - [290T - 320T +0.0, -0.3; 360T - 440T +0.0, -0.6.
- (3) 'U' VARIES +0.00, -0.01
- (4) ALL FRAMES HAVE EIGHT MOUNTING HOLES FOR DUAL MOUNTING.
- (5) MOTOR WEIGHTS MAY VARY BY 1% DEPENDING UPON RATING.
- (6) 'N-V' VARIES +0.0, -0.25.

CONDUIT BOX LOCATED ON OPPOSITE SIDE WHEN F-2-W-1, V-4-W-5-W-7, OR C-1 MOUNTING IS SPECIFIED.

IF MOUNTING CLEARANCE DETAILS ARE REQUIRED, CONSULT FACTORY.

MAXIMUM PERMISSIBLE SHAFT RUNOUT WHEN MEASURED AT END OF STD. SHAFT EXTENSION IS .002 T.I.R. UP TO AND INCLUDING 1.625 DIA. AND .003 T.I.R. ABOVE 1.625

TO 5 INCH DIA.

FRAME _____ TYPE _____ CERTIFIED FOR _____

ORDER _____ ITEM _____ HP _____ RPM _____ PH _____ HZ _____ VOLTS _____

SALES ORDER _____ APPROVED BY _____ DATE _____

105-051119

CUSTOMER IS RESPONSIBLE FOR DETERMINING THAT BALDOR'S PRODUCT WILL PERFORM SUITABLY IN THE INTENDED APPLICATION.

REV. DESC: LOADED TO BUS	VERSION: 01	TDR: 000000546464
REV. LTR: A	REVISED: 03:18:49 06/22/2010	BY: RAGHZT
FILE: \RAG\00009\279		
MTL: -		

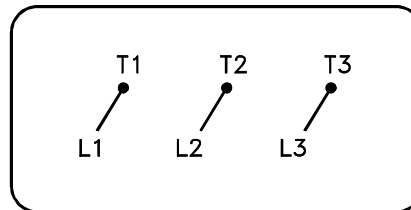


DIM SHT-250T-440T

SH 1 of 1

416820-036

A-C MOTOR
CONNECTION DIAGRAM
STANDARD 3 LEAD CONNECTED



(N.P. 1575-BA)

416820-036

REV. DESC: LOADED TO BUS, C/R 335225		
REV. LTR: -	VERSION: 00	TDR: 000000538207
FILE: \MGA\00000\682	REVISED: 11:54:06 04/30/2010	
MTL: -	BY: RAGRA	

BALDOR

CONN DIAG - STANDARD 3 LEAD
SH 1 of 1