

**BALDOR • RELIANCE**

---

# Customer information packet

## EM2555T-CI

100HP, 1785RPM, 3PH, 60HZ, 404T, ODP, FOOT,  
Class - None  
Division - Not Applicable

## Specifications

Enclosure	DP
Frame	404T
Frame Material	Iron
Frequency	60.00 Hz
Motor Letter Type	Three Phase
Output @ Frequency	100.000 HP @ 60 HZ
Phase	3
Synchronous Speed @ Frequency	1800 RPM @ 60 HZ
Voltage @ Frequency	230.0 V @ 60 HZ 460.0 V @ 60 HZ
XP Class and Group	None
XP Division	Not Applicable
Agency Approvals	CSA EEV CCSA US
Ambient Temperature	40 °C
Auxillary Box	No Auxillary Box
Base Indicator	Rigid
Bearing Grease Type	Polyrex EM (-20F +300F)
Current @ Voltage	230.000 A @ 230.0 V 115.000 A @ 460.0 V
Design Code	B
Drip Cover	No Drip Cover
Duty Rating	CONT
Efficiency @ 100% Load	95.4 %
Feedback Device	NO FEEDBACK
Heater Indicator	No Heater
High Voltage Full Load Amps	115.0 a
Insulation Class	F
Inverter Code	Inverter Ready
KVA Code	G
Lifting Lugs	Standard Lifting Lugs
Motor Lead Quantity/Wire Size	3 @ 2 AWG

## Part detail

Revision	M
Type	AC
Mech. spec.	
Base	
Status	PRD/A
Elec. spec.	A40WG0707
Layout	611750-501
Eff. date	10-19-2017
CD Diagram	416820-002
Poles	04
Leads	3#2,6#4
Proprietary	False
Created date	02-03-2011

<b>Motor Standards</b>	<b>NEMA</b>
<b>Motor Type</b>	A40052M
<b>Mounting Arrangement</b>	F1
<b>Number of Poles</b>	4
<b>Overall Length</b>	34.00 IN
<b>Power Factor</b>	85
<b>Pulley End Bearing Type</b>	Ball
<b>Pulley Face Code</b>	Standard
<b>Service Factor</b>	1.15
<b>Shaft Diameter</b>	2.875 IN
<b>Shaft Ground Indicator</b>	No Shaft Grounding
<b>Shaft Rotation</b>	Reversible
<b>Shaft Slinger Indicator</b>	No Slinger
<b>Speed</b>	1785 rpm
<b>Speed Code</b>	Single Speed
<b>Starting Method</b>	Direct on line
<b>Thermal Device - Bearing</b>	None
<b>Thermal Device - Winding</b>	None

**Nameplate**

**NP2383L**

<b>CAT.NO.</b>	EM2555T-CI	<b>SPEC NO.</b>	P40G297						
<b>HP</b>	100	<b>AMPS</b>	230/115	<b>VOLTS</b>	230/460	<b>DESIGN</b>	B		
<b>FRAME</b>	404T	<b>RPM</b>	1785	<b>HZ</b>	60	<b>AMB</b>	40	<b>SF</b>	1.15
<b>DRIVE END BEARING</b>	80BC03J30X	<b>PHASE</b>	3	<b>DUTY</b>	CONT	<b>INSUL.CLASS</b>	F		
<b>OPP D.E. BEARING</b>	80BC03J30X	<b>TYPE</b>	P	<b>ENCL</b>	DP	<b>CODE</b>	G		
<b>SER.NO.</b>		<b>POWER FACTOR</b>	85	<b>NEMA-NOM-EFFICIENCY</b>	95.4				
<b>NEMA NOM/CSA QUOTED EFF</b>		<b>MAX CORR KVAR</b>	20.0	<b>GUARANTEED EFFICIENCY</b>	95.0				
		<b>MOTOR WEIGHT</b>							

## Parts list

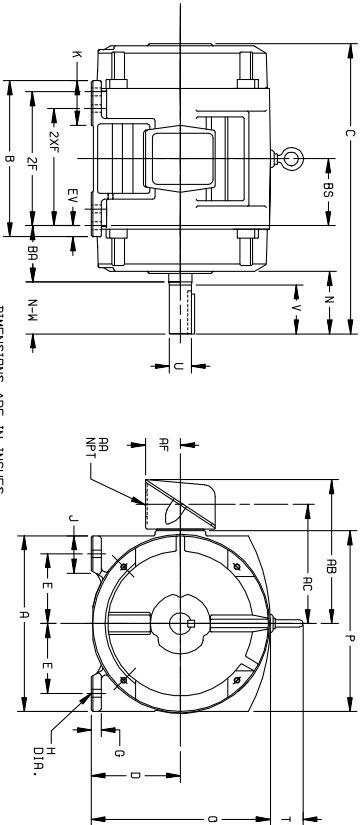
Part number	Description	Quantity
SA216611	SA P40G297	1.000 ea
RA203796	RA P40G297	1.000 ea
000613006PU	N/P (RELEASE QTY 10,000) UL CSA LABEL	1.000 ea
000692000VD	LABEL WARNING	1.000 ea
NP2383L	SUPER-E ,SS, CC, CSA-C US, CSA EEV	1.000 ea
421948032	LABEL, MYLAR	1.000 ea
004824015A	GREASE POLYREX EM	1.000 lb
032018010AK	HHCS 1/4-20X1-1/4L PLTD.	4.000 ea
032018020DK	HHCS 1/2-13X2-1/2 PLTD. 963746	2.000 ea
032018026DK	HHCS 1/2-13X3-1/4L PLTD.	2.000 ea
032018030CK	HHCS 3/8-16X3-3/4 PLATED	3.000 ea
034000012AB	WSHR 1/4 STD. PLATED	4.000 ea
034017012AB	LCKW 1/4 STD. PLATED 034017012AF	4.000 ea
034600001AA	BUSH 1/4TO1/8 BLACK	1.000 ea
035000001G	GREASE RELIEF FITTING, ALEMITE 317400	1.000 ea
089407052A	BRKT 400 089407052WCB	1.000 ea
089407052A	BRKT 400 089407052WCB	1.000 ea
405851012AD	SPACE	4.000 ea
410700000DA	WAVY SPRING WASHER	1.000 ea
702609001A	BAFFL 400 SUB PAINT	1.000 ea
032018010AK	HHCS 1/4-20X1-1/4L PLTD.	4.000 ea
032018020DK	HHCS 1/2-13X2-1/2 PLTD. 963746	2.000 ea
032018026DK	HHCS 1/2-13X3-1/4L PLTD.	2.000 ea
032018030CK	HHCS 3/8-16X3-3/4 PLATED	3.000 ea
034000012AB	WSHR 1/4 STD. PLATED	4.000 ea
034017012AB	LCKW 1/4 STD. PLATED 034017012AF	4.000 ea
034600001AA	BUSH 1/4TO1/8 BLACK	1.000 ea
035000001G	GREASE RELIEF FITTING, ALEMITE 317400	1.000 ea
405851012AD	SPACE	4.000 ea
702609001A	BAFFL 400 SUB PAINT	1.000 ea
032018010CK	HHCS 3/8-16X1-1/4 PLTD. 032018010CR	4.000 ea

033512008LB	HHTTS 1/4-20X1 PLATED	4.000 ea
035000001A	ALFTG 1/8" 1610-BL	1.000 ea
035000001A	ALFTG 1/8" 1610-BL	1.000 ea
048897010DH	BUSH - 400	1.000 ea
067053000B	GASK 320-400	1.000 ea
076708000BB	CONDUIT BOX-360	1.000 ea
076709000A	C/B Cover - 360	1.000 ea
065776000C	GASKET,MAIN CBOX, 320-400	1.000 ea
415000115H	T/LUG #2AWG-4/0AWG	1.000 ea
418150003A	GREASE FITTING CAP	1.000 ea
033775004EA	DRSCR #6-1/4 304 S.S.	2.000 ea
418150003A	GREASE FITTING CAP	1.000 ea
034180044JA	KEY 3/4X3/4X5-1/2 L	1.000 ea
MG1025N19	WILKO 778.50 BLUE GREEN - 55 GAL DRUMS	0.250 ga
004824003CBY	WILKO PAINT 060.02 - ACTIVATOR	0.031 ga
N424003609DBA	LEAD SET 2-1/4-1 AWG 6-DB 400 FR 60 IN	1.000 ea
604797045	STD. 400 FRAME SKID	1.000 ea
032018005DL	1/2-13 X 5/8 SILICON BRONZE HHCS	1.000 ea

# DUTY MASTER ALTERNATING CURRENT MOTORS

SQUIRREL-CAGE INDUCTION  
CAST IRON CONSTRUCTION

ENCLOSURE: PROTECTED  
MOUNTING: FOOT  
FRAMES 250T THRU 440T  
COOLING: SELF-VENTILATED



DIMENSIONS ARE IN INCHES

FRAME	A	D(2)	E	G	H	J	K	Q	P	T	AA	AB	AC	AF	BA	EV
254T-256T	12.50	6.25	5.00	.69	.56	2.25	3.50	12.61	12.69	2.44	1-1/4	10.25	8.25	2.50	4.25	.62
284T-286T	14.00	7.00	5.50	.75	.56	2.75	3.75	14.12	14.31	2.44	1-1/2	12.06	9.62	3.19	4.75	1.00
324T-326T	15.75	8.00	6.25	.89	.69	3.12	4.00	16.10	16.42	2.44	2	14.75	11.00	3.62	5.25	1.00
364T-366T	17.00	9.00	7.00	.88	.69	3.00	3.62	18.30	19.56	2.94	3	18.00	13.81	4.12	5.88	1.00
404T-406T	19.00	10.00	8.00	1.12	.81	3.25	4.75	20.56	21.81	2.94	3	19.00	14.81	3.12	6.62	1.12
444T-446T	21.00	11.00	9.00	1.12	.81	3.25	5.25	22.91	23.62	3.25	3	21.44	16.69	5.00	7.50	1.25

FRAME	C	RS	B	ZF	EV	N	N-V(6)	U(3)	V	SQ.	LGTH.	WEIGHT
SIZE					(4)							LBS. (3)
254T	22.44	5.00	11.25	---	8.25	4.25	4.00	1.625	3.75	3.75	2.75	2.65
284T	22.44	5.00	11.25	10.00	---	4.25	4.00	1.625	3.75	3.75	2.75	2.75
324T	24.94	5.50	13.00	---	9.50	4.88	4.62	1.875	4.38	5.00	3.25	3.40
364T	23.56	5.50	13.00	---	9.50	3.25	3.62	1.625	3.00	3.75	1.88	3.40
404T	24.94	5.50	13.00	11.00	---	4.62	4.62	1.875	4.38	5.00	3.25	3.70
444T	23.56	5.50	13.00	11.00	---	3.50	3.62	1.625	3.00	3.75	3.98	4.80
254T	52.62	4.00	14.00	---	10.50	4.25	3.25	1.562	3.50	5.00	2.00	7.20
284T	52.62	4.00	14.00	---	10.50	5.00	3.25	1.562	3.50	5.00	3.70	5.80
324T	52.62	4.00	14.00	12.00	---	4.00	3.25	1.562	3.50	5.00	2.00	7.20
364T	59.70	4.12	14.25	---	11.25	4.12	3.25	1.562	3.25	5.62	4.25	7.70
404T	59.70	4.12	14.25	12.25	---	4.12	3.25	1.562	3.25	5.62	4.25	7.70
444T	27.58	6.12	14.25	12.25	---	4.00	3.25	1.875	3.50	5.00	2.00	7.70
364T	27.58	6.12	14.25	12.25	---	4.00	3.25	1.875	3.50	5.00	2.00	7.70
404T	34.00	6.88	16.00	---	12.25	4.62	4.25	2.875	4.00	7.50	5.50	10.45
444T	34.00	6.88	16.00	---	12.25	4.62	4.25	2.875	4.00	7.50	5.50	10.45
405T	31.00	6.88	16.00	---	12.25	4.62	4.25	2.875	4.00	7.50	5.50	10.65
444T	39.56	8.25	19.00	---	14.50	8.94	8.50	3.375	8.25	8.75	6.88	17.25
444T	39.56	8.25	19.00	---	14.50	8.94	8.50	3.375	8.25	8.75	6.88	17.25
445T	39.56	8.25	19.00	16.50	---	8.94	8.50	3.375	8.25	8.75	6.88	17.75
445T	39.56	8.25	19.00	16.50	---	8.94	8.50	3.375	8.25	8.75	6.88	17.75

- (1) SPECIAL DIMENSIONS APPLYING TO THIS ORDER ON THIS LINE. CONDUIT BOX LOCATED ON OPPOSITE SIDE WHEN F-2-W-1, V-4-W-5-W-7, DR C-1 MOUNTING IS SPECIFIED.
- (2) 'D' VARIES --- [ 360T - 320T +0.0, -0.3.
- (3) 'U' VARIES +0.00, -0.01 IF MOUNTING CLEARANCE DETAILS ARE REQUIRED, CONSULT FACTORY.
- (4) ALL FRAMES HAVE EIGHT MOUNTING HOLES FOR DUAL MAXIMUM PERMISSIBLE SHAFT RUNOUT WHEN MEASURED AT END OF STD. SHAFT EXTENSION IS .002 T.I.R. UP TO AND INCLUDING 1.625 DIA. AND .003 T.I.R. ABOVE 1.625 TO 5 INCH DIA.
- (5) MOTOR WEIGHTS MAY VARY BY 15% DEPENDING UPON RATING.
- (6) 'N-V' VARIES +0.0, -0.25.

FRAME \_\_\_\_\_ TYPE \_\_\_\_\_ CERTIFIED FOR \_\_\_\_\_ RPM \_\_\_\_\_ PH \_\_\_\_\_ HZ \_\_\_\_\_ VOLTS \_\_\_\_\_  
 ORDER \_\_\_\_\_ ITEM \_\_\_\_\_ HP \_\_\_\_\_ APPROVED BY \_\_\_\_\_ DATE \_\_\_\_\_  
 SALES ORDER \_\_\_\_\_

105-051119

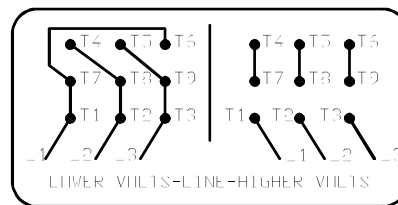
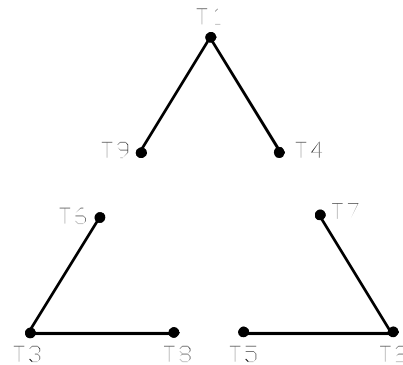
CUSTOMER IS RESPONSIBLE FOR DETERMINING THAT BALDOR'S PRODUCT WILL PERFORM SUITABLY IN THE INTENDED APPLICATION.

REV. DESC: LOADED TO BUS	VERSION: 01	TDR: 000000546464
FILE: \RAG\00009\279	REVISED: 03:18:49 06/22/2010	BY: RAGHZT
MTL: -		



416820-002

A-C MOTOR  
 CONNECTION DIAGRAM  
 STANDARD 9 LEAD DELTA-CONNECTED



(N.P. 1575-B)

416820-002

REV. DESC: FONT CHANGE FOR PDF SEARCHABLE		
REV. LTR: A	VERSION: 01	TDR: 000001009382
FILE: \MGA\00000\661	REVISED: 02:46:19 02/13/2020	BY: MGHMTT
MTL: -		© □

**BALDOR - RELIANCE®**

CONN DIAG - STANDARD 9 LEAD, DELTA-CONNECTED

SH 1 of 1