



Customer information packet

EM2583T-4

100HP, 1190RPM, 3PH, 60HZ, 444T, 1860M, OPEN

Class - None

Division - Not Applicable

Specifications

| | |
|-------------------------------|-------------------------|
| Enclosure | DP |
| Frame | 444T |
| Frame Material | Iron |
| Frequency | 60.00 Hz |
| Motor Letter Type | Three Phase |
| Output @ Frequency | 100.000 HP @ 60 HZ |
| Phase | 3 |
| Synchronous Speed @ Frequency | 1200 RPM @ 60 HZ |
| Voltage @ Frequency | 460.0 V @ 60 HZ |
| XP Class and Group | None |
| XP Division | Not Applicable |
| Agency Approvals | CSA EEV CCSA US |
| Ambient Temperature | 40 °C |
| Auxillary Box | No Auxillary Box |
| Base Indicator | Rigid |
| Bearing Grease Type | Polyrex EM (-20F +300F) |
| Current @ Voltage | 116.000 A @ 460.0 V |
| Design Code | B |
| Drip Cover | No Drip Cover |
| Duty Rating | CONT |
| Efficiency @ 100% Load | 95.0 % |
| Feedback Device | NO FEEDBACK |
| Heater Indicator | No Heater |
| High Voltage Full Load Amps | 116.0 a |
| Insulation Class | F |
| Inverter Code | Inverter Ready |
| KVA Code | F |
| Lifting Lugs | No Lifting Lugs |
| Motor Lead Quantity/Wire Size | 6 @ 4 AWG |
| Motor Standards | NEMA |
| Motor Type | A44056M |

Part detail

| | |
|--------------|------------|
| Revision | N |
| Type | AC |
| Mech. spec. | |
| Base | |
| Status | PRD/A |
| Elec. spec. | A44WG1481 |
| Layout | 611750-501 |
| Eff. date | 07-11-2019 |
| CD Diagram | 416820-008 |
| Poles | 06 |
| Leads | 6#4 |
| Proprietary | False |
| Created date | 10-19-2010 |

| | |
|---------------------------------|-----------------------|
| Mounting Arrangement | F1 |
| Number of Poles | 6 |
| Overall Length | 39.56 IN |
| Power Factor | 85 |
| Pulley End Bearing Type | Ball |
| Pulley Face Code | C-Face |
| Service Factor | 1.15 |
| Shaft Diameter | 3.375 IN |
| Shaft Ground Indicator | No Shaft Grounding |
| Shaft Rotation | Reversible |
| Shaft Slinger Indicator | No Slinger |
| Speed | 1185 rpm |
| Speed Code | Single Speed |
| Starting Method | Wye Start - Delta Run |
| Thermal Device - Bearing | None |
| Thermal Device - Winding | None |

Nameplate

NP2377L

| | | | | | | | | | |
|--------------------------|------------|--------------------------------|----------|------------------------------|------|--------------------|----|-----------|------|
| CAT.NO. | EM2583T-4 | SPEC NO. | P44G1771 | | | | | | |
| HP | 100 | AMPS | 116 | VOLTS | 460 | DESIGN | B | | |
| FRAME | 444T | RPM | 1185 | HZ | 60 | AMB | 40 | SF | 1.15 |
| DRIVE END BEARING | 90BC03J30X | PHASE | 3 | DUTY | CONT | INSUL.CLASS | F | | |
| OPP D.E. BEARING | 90BC03J30X | TYPE | P | ENCL | DP | CODE | F | | |
| SER.NO. | | POWER FACTOR | 85 | NEMA-NOM-EFFICIENCY | 95 | | | | |
| | | MAX CORR KVAR | 20.0 | GUARANTEED EFFICIENCY | 94.5 | | | | |
| | | NEMA NOM/CSA QUOTED EFF | | | | | | | |
| | | MOTOR WEIGHT | | | | | | | |

NP2496L

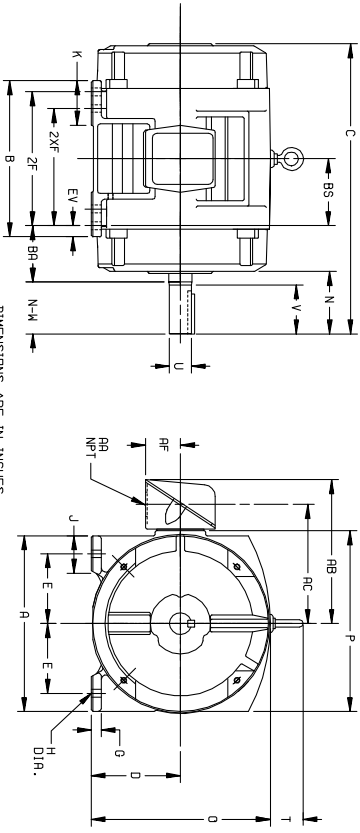
MOBIL POLYREX EM

Parts list

| Part number | Description | Quantity |
|-------------|--|----------|
| SA207463 | SA P44G1771 | 1.000 ea |
| RA194730 | RA P44G1771 | 1.000 ea |
| 000613006PU | N/P (RELEASE QTY 10,000) UL CSA LABEL | 1.000 ea |
| 000692000VD | LABEL WARNING | 1.000 ea |
| NP2377L | SS SUPER-E CC CSA-C US CSA-EEV (LASER) | 1.000 ea |
| 421948044 | LABEL, MYLAR | 1.000 ea |
| 004824015A | GREASE POLYREX EM | 1.156 lb |
| 032018028EK | HHCS 5/8-11X3-1/2L PLTD | 4.000 ea |
| 032018036DK | HHCS 1/2-13X4-1/2 PLTD. | 3.000 ea |
| 034000012AB | WSHR 1/4 STD. PLATED | 4.000 ea |
| 034017012AB | LCKW 1/4 STD. PLATED 034017012AF | 4.000 ea |
| 034600001AA | BUSH 1/4TO1/8 BLACK | 1.000 ea |
| 035000001G | GREASE RELIEF FITTING, ALEMITE 317400 | 1.000 ea |
| 089439051A | BRKT 440 089439051WCB | 1.000 ea |
| 089439051A | BRKT 440 089439051WCB | 1.000 ea |
| 405851012AF | SPACE | 4.000 ea |
| 410700004A | WSHR | 1.000 ea |
| 702611001A | BAFFL 440 SUB PAINT | 1.000 ea |
| 032018028EK | HHCS 5/8-11X3-1/2L PLTD | 4.000 ea |
| 032018036DK | HHCS 1/2-13X4-1/2 PLTD. | 3.000 ea |
| 034000012AB | WSHR 1/4 STD. PLATED | 4.000 ea |
| 034017012AB | LCKW 1/4 STD. PLATED 034017012AF | 4.000 ea |
| 034600001AA | BUSH 1/4TO1/8 BLACK | 1.000 ea |
| 035000001G | GREASE RELIEF FITTING, ALEMITE 317400 | 1.000 ea |
| 405851012AF | SPACE | 4.000 ea |
| 032018008BK | HHCS 5/16-18X1L PLATED | 4.000 ea |
| 032018008DK | HHCS 1/2-13X1 PLATED | 4.000 ea |
| 033512006LB | HHTTS 1/4-20X3/4 PLTD. | 1.000 ea |
| 035000001A | ALFTG 1/8" 1610-BL | 1.000 ea |
| 035000001A | ALFTG 1/8" 1610-BL | 1.000 ea |
| 048897010DJ | BUSH - 445 | 1.000 ea |

| | | |
|-------------|---|----------|
| 067053001C | GASK 440 | 1.000 ea |
| 076863000C | +CBCST BLKT - 440 | 1.000 ea |
| 076864000A | CBCST BLKT - 440 | 1.000 ea |
| 406056007A | GASKET, 440 | 1.000 ea |
| 415000103D | T/LUG #4AWG-1/0AWG W/HOLE FOR .250 BOLT | 1.000 ea |
| 418150003A | GREASE FITTING CAP | 1.000 ea |
| MG1025Y17 | WILKOFAST, 789.701, SUPER E PEARL GOLD | 0.250 ga |
| 418150003A | GREASE FITTING CAP | 1.000 ea |
| 033775004EA | DRSCR #6-1/4 304 S.S. | 2.000 ea |
| 415045002A | SLGR | 1.000 ea |
| 702611001A | BAFFL 440 SUB PAINT | 1.000 ea |
| 034180054KA | 7/8 SQ X 6.75 KEY | 1.000 ea |
| NP2496L | MOTOR LUBE NAMEPLATE | 1.000 ea |
| PK5004A09 | BASE 48 X 39-1/4 STACK 2 X 4 RUNNER | 1.000 ea |

DUTY MASTER ALTERNATING CURRENT MOTORS
 SQUIRREL-CAGE INDUCTION
 CAST IRON CONSTRUCTION
 ENCLOSURE: PROTECTED
 MOUNTING: FOOT
 COOLING: SELF-VENTILATED
 FRAMES 250T THRU 440T



DIMENSIONS ARE IN INCHES

| FRAME | A | D(2) | E | G | H | J | K | Q | P | T | AA | AB | AC | AF | BA | EV |
|-----------|-------|-------|------|------|-----|------|------|-------|-------|------|-------|-------|-------|------|------|------|
| 254T-256T | 12.50 | 6.25 | 5.00 | .69 | .56 | 2.25 | 3.50 | 12.61 | 12.69 | 2.44 | 1-1/4 | 10.25 | 8.25 | 2.50 | 4.25 | .62 |
| 284T-286T | 14.00 | 7.00 | 5.50 | .75 | .56 | 2.75 | 3.75 | 14.12 | 14.31 | 2.44 | 1-1/2 | 12.06 | 9.62 | 3.19 | 4.75 | 1.00 |
| 324T-326T | 15.75 | 8.00 | 6.25 | .89 | .69 | 3.12 | 4.00 | 16.10 | 16.42 | 2.44 | 2 | 14.75 | 11.00 | 3.62 | 5.25 | 1.00 |
| 364T-366T | 17.00 | 9.00 | 7.00 | .88 | .69 | 3.00 | 3.62 | 18.30 | 19.56 | 2.94 | 3 | 18.00 | 13.81 | 4.12 | 5.88 | 1.00 |
| 404T-406T | 19.00 | 10.00 | 8.00 | 1.12 | .81 | 3.25 | 4.75 | 20.56 | 21.81 | 2.94 | 3 | 19.00 | 14.81 | 3.12 | 6.62 | 1.12 |
| 444T-446T | 21.00 | 11.00 | 9.00 | 1.12 | .81 | 3.25 | 5.25 | 22.91 | 23.62 | 3.25 | 3 | 21.44 | 16.69 | 5.00 | 7.50 | 1.25 |

| FRAME | C | RS | B | ZF | EV | N | N-V(6) | U(3) | V | SQ. | LGTH. | WEIGHT |
|-------|-------|------|-------|-------|-------|------|--------|-------|------|------|-------|------------|
| SIZE | | | | | (4) | | | | | | | (LBS. (3)) |
| 254T | 22.44 | 5.00 | 11.25 | --- | 8.25 | 4.25 | 4.00 | 1.625 | 3.75 | 3.75 | 2.75 | 2.65 |
| 284T | 22.44 | 5.00 | 11.25 | 10.00 | --- | 4.25 | 4.00 | 1.625 | 3.75 | 3.75 | 2.75 | 2.75 |
| 324T | 24.94 | 5.50 | 13.00 | --- | 9.50 | 4.88 | 4.62 | 1.875 | 4.38 | 5.00 | 3.25 | 3.40 |
| 364T | 23.56 | 5.50 | 13.00 | --- | 9.50 | 3.50 | 3.25 | 1.625 | 3.00 | 3.75 | 1.88 | 3.40 |
| 404T | 24.94 | 5.50 | 13.00 | 11.00 | --- | 4.62 | 4.62 | 1.875 | 4.38 | 5.00 | 3.25 | 3.70 |
| 444T | 23.56 | 5.50 | 13.00 | 11.00 | --- | 3.50 | 3.25 | 1.625 | 3.00 | 3.75 | 1.98 | 3.40 |
| 254T | 52.62 | 4.00 | 14.00 | --- | 10.50 | 4.25 | 3.50 | 1.562 | 3.50 | 5.00 | 3.00 | 4.80 |
| 284T | 52.62 | 4.00 | 14.00 | --- | 10.50 | 4.25 | 3.50 | 1.562 | 3.50 | 5.00 | 3.00 | 4.80 |
| 324T | 52.62 | 4.00 | 14.00 | 12.00 | --- | 4.00 | 3.75 | 1.562 | 3.50 | 5.00 | 3.00 | 4.80 |
| 364T | 59.70 | 4.12 | 14.25 | --- | 11.25 | 4.12 | 3.75 | 1.875 | 3.50 | 5.25 | 4.25 | 5.20 |
| 404T | 59.70 | 4.12 | 14.25 | --- | 11.25 | 4.12 | 3.75 | 1.875 | 3.50 | 5.25 | 4.25 | 5.20 |
| 444T | 27.58 | 6.12 | 14.25 | 12.25 | --- | 4.00 | 3.75 | 1.875 | 3.50 | 5.00 | 4.00 | 7.70 |
| 364T | 27.58 | 6.12 | 14.25 | 12.25 | --- | 4.00 | 3.75 | 1.875 | 3.50 | 5.00 | 4.00 | 7.70 |
| 404T | 34.00 | 6.88 | 16.00 | --- | 12.25 | 4.62 | 4.25 | 2.275 | 5.25 | 5.00 | 4.25 | 7.70 |
| 444T | 34.00 | 6.88 | 16.00 | --- | 12.25 | 4.62 | 4.25 | 2.275 | 5.25 | 5.00 | 4.25 | 7.70 |
| 405T | 34.00 | 6.88 | 16.00 | 13.75 | --- | 7.62 | 7.25 | 2.875 | 7.00 | 7.50 | 5.50 | 10.65 |
| 444T | 39.56 | 8.25 | 19.00 | --- | 14.50 | 8.94 | 8.50 | 3.375 | 8.25 | 8.75 | 6.88 | 17.25 |
| 444T | 39.56 | 8.25 | 19.00 | --- | 14.50 | 8.94 | 8.50 | 3.375 | 8.25 | 8.75 | 6.88 | 17.25 |
| 445T | 39.56 | 8.25 | 19.00 | 16.50 | --- | 8.94 | 8.50 | 3.375 | 8.25 | 8.75 | 6.88 | 17.75 |
| 445T | 39.56 | 8.25 | 19.00 | 16.50 | --- | 8.94 | 8.50 | 3.375 | 8.25 | 8.75 | 6.88 | 17.75 |

- (1) SPECIAL DIMENSIONS APPLYING TO THIS ORDER ON THIS LINE.
 - (2) 'D' VARIES --- [360T - 320T +0.0, -0.3.
 - (3) 'U' VARIES +0.00, -0.01
 - (4) ALL FRAMES HAVE EIGHT MOUNTING HOLES FOR DUAL MOUNTING.
 - (5) MOTOR WEIGHTS MAY VARY BY 15% DEPENDING UPON RATING.
 - (6) 'N-V' VARIES +0.0, -0.25.
- CONDUIT BOX LOCATED ON OPPOSITE SIDE WHEN F-2-W-1, V-4-W-5-W-7, DR C-1 MOUNTING IS SPECIFIED.

IF MOUNTING CLEARANCE DETAILS ARE REQUIRED, CONSULT FACTORY.

MAXIMUM PERMISSIBLE SHAFT RUNOUT WHEN MEASURED AT END OF STD. SHAFT EXTENSION IS .002 T.I.R. UP TO AND INCLUDING 1.625 DIA. AND .003 T.I.R. ABOVE 1.625 TO 5 INCH DIA.

FRAME _____ TYPE _____ CERTIFIED FOR _____

ORDER _____ ITEM _____ HP _____ RPM _____ PH _____ HZ _____ VOLTS _____

SALES ORDER _____ APPROVED BY _____ DATE _____

105-051119

CUSTOMER IS RESPONSIBLE FOR DETERMINING THAT BALDOR'S PRODUCT WILL PERFORM SUITABLY IN THE INTENDED APPLICATION.

| | | |
|--------------------------|------------------------------|------------------|
| REV. DESC: LOADED TO BUS | VERSION: 01 | TDR: 00000546464 |
| FILE: \RAG\00009\279 | REVISED: 03:18:49 06/22/2010 | BY: RAGHZT |
| MTL: - | | |

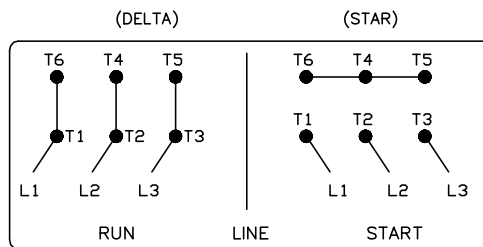
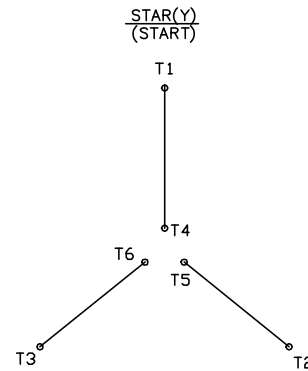
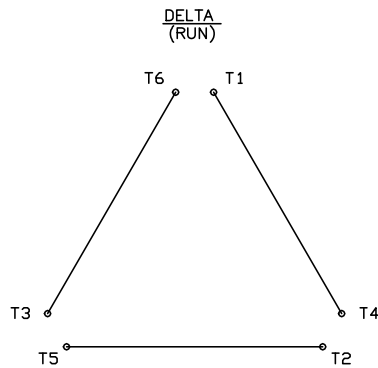


416820-008

A-C MOTOR CONNECTION DIAGRAM

STANDARD 6 LEAD

Y START - DELTA RUN



< N. P. 1767-DC >

| | | |
|--|--------------------------------|------------------|
| REV. DESC: ADDED T4 TO Y CONNECT DIAGRAM | | |
| REV. LTR: D | VERSION: 04 | TDR: 00000847713 |
| FILE: \RAG\00001\808 | REVISED: 10: 41: 26 04/08/2014 | BY: RAGJSS1 |
| MTL: - | © □ | |

BALDOR

CONNECT DIAGRAM STD 6 LEAD Y START DELTA RUN

SH 1 of 1

416820-008