

BALDOR® • RELIANCE 

Product Information Packet

EM3554T-BG

1.5HP, 1760RPM, 3PH, 60HZ, 145T, 3526M, TEFC, F

| Part Detail | | | | | | | |
|-------------|---------|-------------|------------|-------------|--------|---------------|------------|
| Revision: | N | Status: | PRD/A | Change #: | | Proprietary: | No |
| Type: | AC | Elec. Spec: | 35WGM493 | CD Diagram: | CD0005 | Mfg Plant: | |
| Mech. Spec: | 35E2208 | Layout: | 35LYE2208 | Poles: | 04 | Created Date: | 10-04-2013 |
| Base: | RG | Eff. Date: | 12-28-2021 | Leads: | 9#18 | | |

| Specs | | | |
|---------------------------------|-------------------------|--------------------------------|-----------------|
| Catalog Number: | EM3554T-BG | Heater Indicator: | No Heater |
| Enclosure: | TEFC | Insulation Class: | H |
| Frame: | 145T | Inverter Code: | Inverter Ready |
| Frame Material: | Steel | KVA Code: | L |
| Output @ Frequency: | 1.500 HP @ 60 HZ | Lifting Lugs: | No Lifting Lugs |
| Synchronous Speed @ Frequency: | 1800 RPM @ 60 HZ | Locked Bearing Indicator: | Locked Bearing |
| Voltage @ Frequency: | 460.0 V @ 60 HZ | Motor Lead Quantity/Wire Size: | 9 @ 18 AWG |
| | 230.0 V @ 60 HZ | Motor Lead Exit: | Ko Box |
| XP Class and Group: | None | Motor Lead Termination: | Flying Leads |
| XP Division: | Not Applicable | Motor Type: | 3526M |
| Agency Approvals: | UR | Mounting Arrangement: | F1 |
| | CSA EEV | Power Factor: | 73 |
| | CSA | Product Family: | General Purpose |
| Auxillary Box: | No Auxillary Box | Pulley End Bearing Type: | Ball |
| Auxillary Box Lead Termination: | None | Pulley Face Code: | Standard |
| Base Indicator: | Rigid | Pulley Shaft Indicator: | Standard |
| Bearing Grease Type: | Polyrex EM (-20F +300F) | Rodent Screen: | None |
| Blower: | None | Shaft Extension Location: | Pulley End |

| | | | |
|---------------------------------------|---------------------------|------------------------------------|---------------------|
| Current @ Voltage: | 2.200 A @ 460.0 V | Shaft Ground Indicator: | Shaft Grounding |
| | 4.400 A @ 230.0 V | Shaft Rotation: | Reversible |
| | 4.500 A @ 208.0 V | Shaft Slinger Indicator: | No Slinger |
| Design Code: | B | Speed Code: | Single Speed |
| Drip Cover: | No Drip Cover | Motor Standards: | NEMA |
| Duty Rating: | CONT | Starting Method: | Direct on line |
| Electrically Isolated Bearing: | Not Electrically Isolated | Thermal Device - Bearing: | None |
| Feedback Device: | NO FEEDBACK | Thermal Device - Winding: | None |
| Front Face Code: | Standard | Vibration Sensor Indicator: | No Vibration Sensor |
| Front Shaft Indicator: | None | Winding Thermal 1: | None |
| | | Winding Thermal 2: | None |

| Nameplate NP3441LUA | |
|----------------------------|----------------------------|
| CAT.NO. | EM3554T-BG |
| SPEC | 35E2208M493G1 |
| HP | 1.5 |
| VOLTS | 230/460 |
| AMPS | 4.4/2.2 |
| RPM | 1760 |
| FRAME | 145T |
| HZ | 60 |
| PH | 3 |
| SF | 1.15 |
| CODE | L |
| DES | B |
| CLASS | H |
| NEMA NOM. EFF | 86.5 |
| PF | 73 |
| RATING | 40C AMB-CONT |
| CC | 010A |
| ENCL | TEFC |
| SER | |
| DE | 6205 |
| ODE | 6203 |
| VPWM INVERTER READY | SFA 4.8/2.4 |
| CT6-60H(10:1)VT3-60H(20:1) | |
| | 50Hz 1.5HP 190/380V 5/2.5A |
| | SF1.0 |

| Parts List | | |
|---------------|--|----------|
| Part Number | Description | Quantity |
| SA270201 | SA 35E2208M493G1 | 1.000 EA |
| RA256840 | RA 35E2208M493G1 | 1.000 EA |
| 34FN3002B01 | EXTERNAL FAN, PLASTIC, .637/.639 HUB W/ | 1.000 EA |
| NS2512A01 | INSULATOR, CONDUIT BOX X | 1.000 EA |
| 35CB3009 | 35 CB W/1.09 DIA. LEAD HOLE @ 6: | 1.000 EA |
| 36GS1000SP | GASKET-CONDUIT BOX, .06 THICK #SV-330 LE | 1.000 EA |
| 51XB1016A07 | 10-16 X 7/16 HXWSSLD SERTYB | 2.000 EA |
| 11XW1032G06 | 10-32 X .38, TAPTITE II, HEX WSHR SLTD U | 1.000 EA |
| 35EP3122A00 | MASTER ODE,203 BRG,.683SH,#26 DRN,GRSR,F | 1.000 EA |
| HW4500A01 | 1641B(ALEMITE)400 UNIV, GREASE FITT | 1.000 EA |
| HW5100A03 | WAVY WASHER (W1543-017) | 1.000 EA |
| 35EP3123F05 | F00 W/LCK BRG | 1.000 EA |
| HW4500A01 | 1641B(ALEMITE)400 UNIV, GREASE FITT | 1.000 EA |
| 51XN1032A18 | 10-32 X 1 1/8 HX WS SL SR (ESKAY) | 2.000 EA |
| XY1032A02 | 10-32 HEX NUT DIRECTIONAL SERRATION | 4.000 EA |
| 51XB1214A16 | 12-14X1.00 HXWSSLD SERTYB | 1.000 EA |
| 35FH4005A84SP | IEC FH W/GRSR, NO DIMPLES PRIMED | 1.000 EA |
| 51XW1032A06 | 10-32 X .38, TAPTITE II, HEX WSHR SLTD S | 3.000 EA |
| 35CB4521GX | CONDUIT BOX LID KIT **ORDER INDIV PARTS | 1.000 EA |
| 51XW0832A07 | 8-32 X .44, TAPTITE II, HEX WSHR SLTD SE | 4.000 EA |
| HW2501D13 | KEY, 3/16 SQ X 1.375 | 1.000 EA |
| HA7000A01 | KEY RETAINER 7/8" DIA SHAFT | 1.000 EA |
| 85XU0407S04 | 4X1/4 U DRIVE PIN STAINLESS | 2.000 EA |
| LB1508 | LABEL "SHAFT GROUNDING BRUSH" 1.50 X .81 | 1.000 EA |

| Parts List (continued) | | |
|-------------------------------|--|-----------------|
| Part Number | Description | Quantity |
| MJ1000A02 | GREASE, MOBIL POLYREX EM - 124047 | 0.050 LB |
| MG1000Y03 | MUNSELL 2.53Y 6.70/ 4.60, GLOSS 20, | 0.017 GA |
| HA3100A18 | THRUBOLT 10-32 X 9.250 | 4.000 EA |
| LC0005E01 | CONN.DIA./WARNING LABEL (LC0005/LB1119N) | 1.000 EA |
| NP3441LUA | ALUM SUPER-E VPWM INV READY UL CSA-EEV C | 1.000 EA |
| 36PA1000 | PKG GRP, PRINT PK1016A06 | 1.000 EA |
| MN416A01 | TAG-INSTAL-MAINT no wire (2100/bx) 4/22 | 1.000 EA |
| FE-0000001 | ZRTG FE ASSEMBLY | 1.000 EA |
| PE-0000001 | ZRTG PE ASSEMBLY | 1.000 EA |

AC Induction Motor Performance Data

Record # 53325

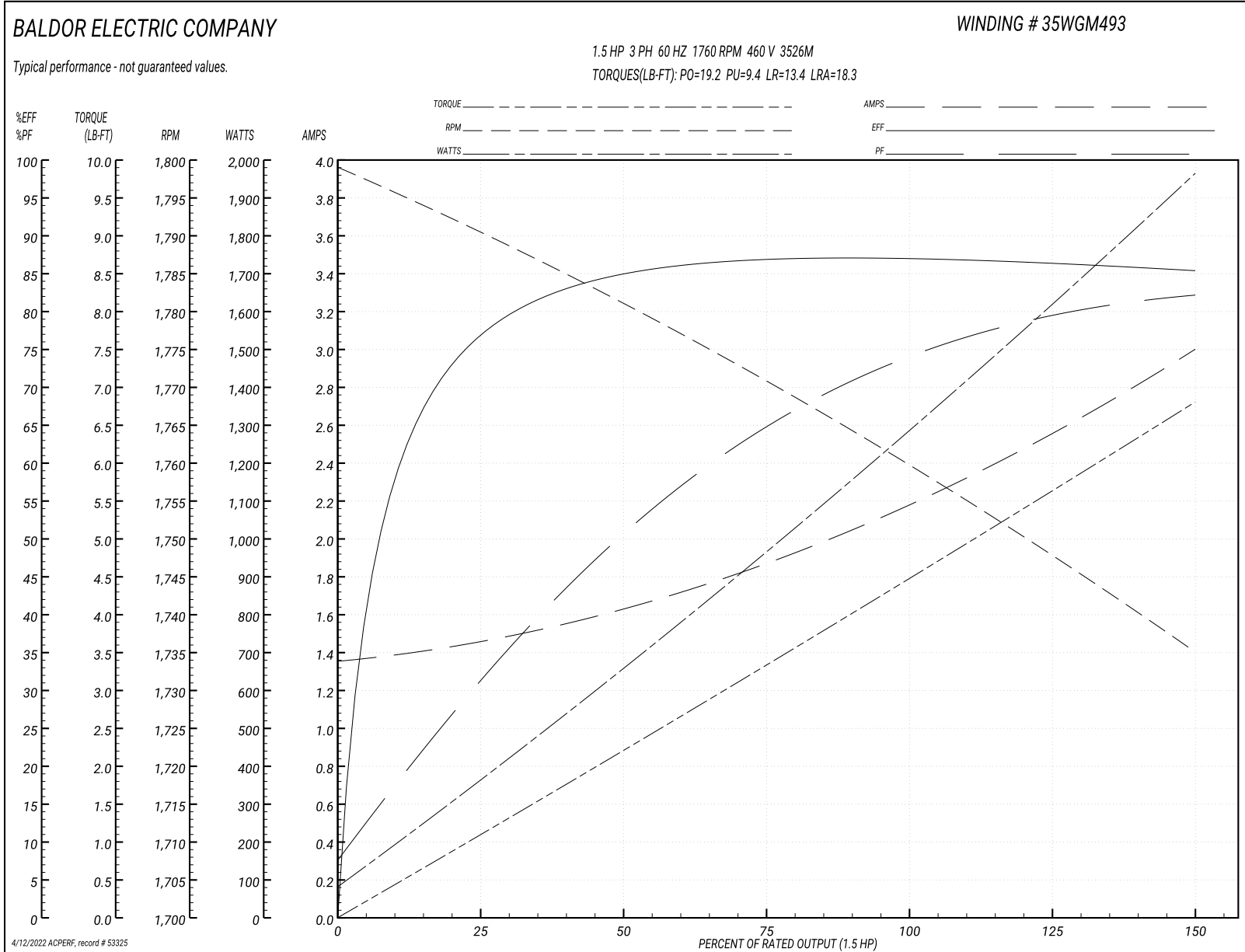
Typical performance - not guaranteed values

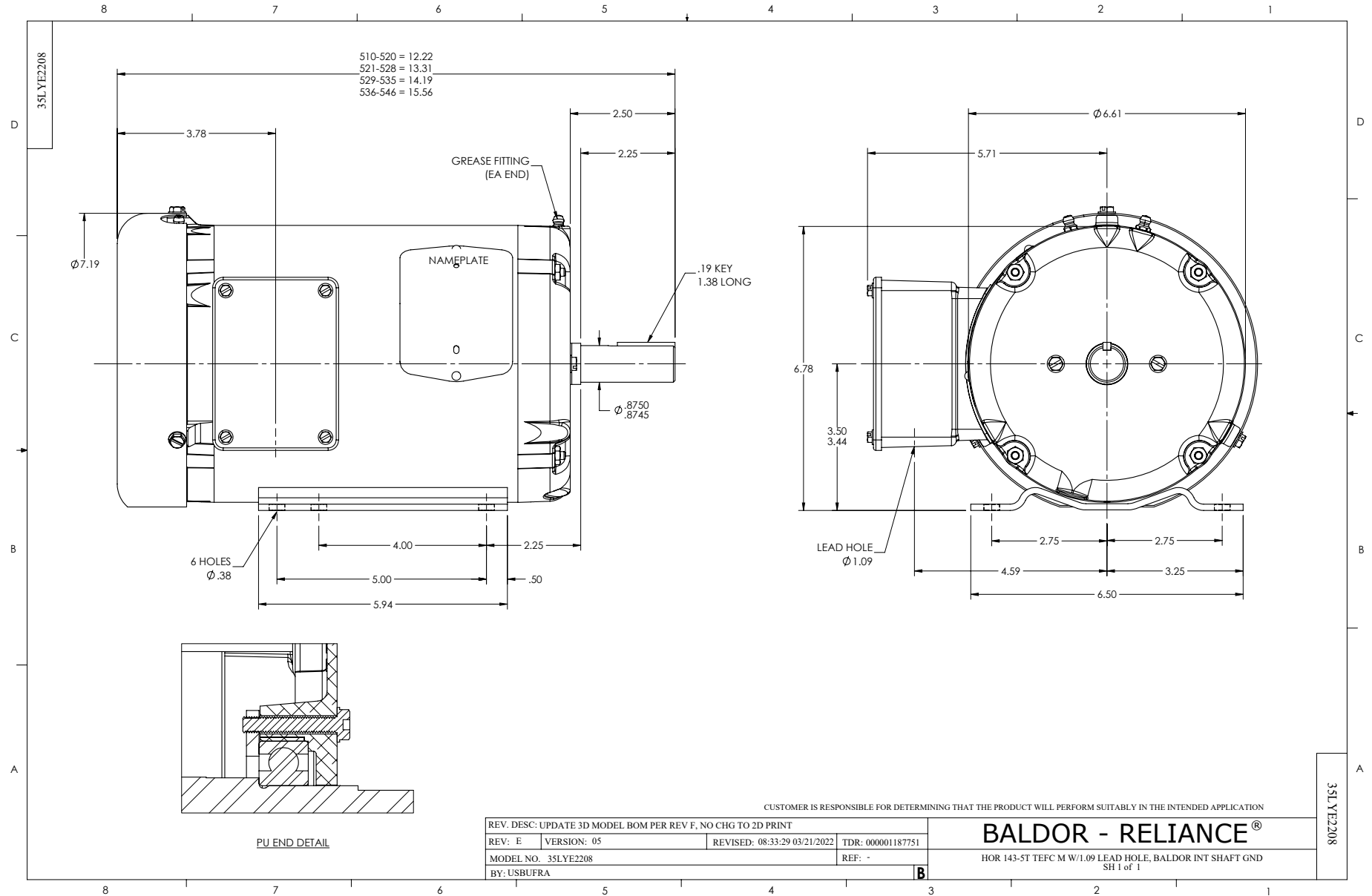
| Winding: 35WGM493-R079 | | Type: 3526M | | Enclosure: TEFC | |
|-------------------------------|-------------------|----------------------------|--|------------------------------|--------|
| Nameplate Data | | | 460 V, 60 Hz: High Voltage Connection | | |
| Rated Output (HP) | 1.5 | Full Load Torque | 4.47 LB-FT | | |
| Volts | 230/460 | Start Configuration | direct on line | | |
| Full Load Amps | 4.4/2.2 | Breakdown Torque | 19.2 LB-FT | | |
| R.P.M. | 1760 | Pull-up Torque | 9.4 LB-FT | | |
| Hz | 60 Phase | 3 | Locked-rotor Torque | 13.4 LB-FT | |
| NEMA Design Code | B KVA Code | L | Starting Current | 18.3 A | |
| Service Factor (S.F.) | 1.15 | No-load Current | 1.37 A | | |
| NEMA Nom. Eff. | 86.5 | Power Factor | 73 | Line-line Res. @ 25°C | 10.7 Ω |
| Rating - Duty | 40C AMB-CONT | | Temp. Rise @ Rated Load | 44°C | |
| S.F. Amps | | | Temp. Rise @ S.F. Load | 52°C | |
| | | | Locked-rotor Power Factor | 52 | |
| | | | Rotor inertia | 0.154 LB-FT ² | |

Load Characteristics 460 V, 60 Hz, 1.5 HP

| % of Rated Load | 25 | 50 | 75 | 100 | 125 | 150 | S.F. |
|------------------------|-----------|-----------|-----------|------------|------------|------------|-------------|
| Power Factor | 31 | 51 | 65 | 73 | 79 | 83 | 77 |
| Efficiency | 76.2 | 84.5 | 86.9 | 87.2 | 86.5 | 85.3 | 86.8 |
| Speed | 1791 | 1781 | 1771 | 1760 | 1748 | 1735 | 1753 |
| Line amperes | 1.44 | 1.61 | 1.86 | 2.19 | 2.58 | 2.98 | 2.42 |

Performance Graph at 460V, 60Hz, 1.5HP Typical performance - Not guaranteed values





CD0005

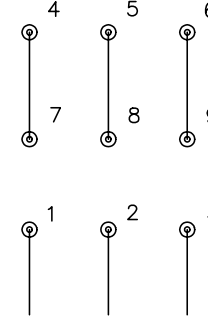


LOW VOLTAGE
(2Y)



LINE

HIGH VOLTAGE
(1Y)



LINE

NOTES:

1. INTERCHANGE ANY TWO LINE LEADS TO REVERSE ROTATION.
2. OPTIONAL THERMOSTATS ARE PROVIDED WHEN SPECIFIED.
3. ACTUAL NUMBER OF INTERNAL PARALLEL CIRCUITS MAY BE A MULTIPLE OF THOSE SHOWN ABOVE.
4. LEAD COLORS ARE OPTIONAL. LEADS MUST ALWAYS BE NUMBERED AS SHOWN.

| | | | |
|---|---------|-------------------------|--------------|
| REV. DESC: REVISE TO SHOW OPTIONAL COLORS | | | |
| REV. LTR: E | BY: JLP | REVISED: 01/19/99 10:15 | TDR: 0171435 |
| 900000 | | FILE: AAA00005140 | MDL: - |
| | | MTL: - | |

BALDOR ELECTRIC Co.

3PH, DV, 9 LEADS

CD0005