

BALDOR® • RELIANCE 

Product Information Packet

EM3667T

1.5HP, 1170RPM, 3PH, 60HZ, 182T, 0630M, TEFC, F

| Part Detail | | | | | | | |
|-------------|--------|-------------|------------|-------------|--------|---------------|------------|
| Revision: | K | Status: | PRD/A | Change #: | | Proprietary: | No |
| Type: | AC | Elec. Spec: | 06WGW969 | CD Diagram: | CD0005 | Mfg Plant: | |
| Mech. Spec: | 06C101 | Layout: | 06LYC101 | Poles: | 06 | Created Date: | 12-02-2010 |
| Base: | RG | Eff. Date: | 02-21-2022 | Leads: | 9#16 | | |

| Specs | | | |
|---------------------------------|-------------------------|--------------------------------|-----------------------|
| Catalog Number: | EM3667T | Insulation Class: | F |
| Enclosure: | TEFC | Inverter Code: | Inverter Ready |
| Frame: | 182T | IP Rating: | NONE |
| Frame Material: | Iron | KVA Code: | K |
| Output @ Frequency: | 1.500 HP @ 60 HZ | Lifting Lugs: | Standard Lifting Lugs |
| Synchronous Speed @ Frequency: | 1200 RPM @ 60 HZ | Locked Bearing Indicator: | No Locked Bearing |
| Voltage @ Frequency: | 460.0 V @ 60 HZ | Motor Lead Quantity/Wire Size: | 9 @ 16 AWG |
| | 230.0 V @ 60 HZ | Motor Lead Exit: | Ko Box |
| XP Class and Group: | None | Motor Lead Termination: | Flying Leads |
| XP Division: | Not Applicable | Motor Type: | 0630M |
| Agency Approvals: | CSA | Mounting Arrangement: | F1 |
| | CSA EEV | Power Factor: | 65 |
| | UR | Product Family: | General Purpose |
| Auxillary Box: | No Auxillary Box | Pulley End Bearing Type: | Ball |
| Auxillary Box Lead Termination: | None | Pulley Face Code: | Standard |
| Base Indicator: | Rigid | Pulley Shaft Indicator: | Standard |
| Bearing Grease Type: | Polyrex EM (-20F +300F) | Rodent Screen: | None |
| Blower: | None | Shaft Extension Location: | Pulley End |

| | | | |
|---------------------------------------|---------------------------|------------------------------------|---------------------|
| Current @ Voltage: | 2.500 A @ 460.0 V | Shaft Ground Indicator: | No Shaft Grounding |
| | 5.000 A @ 230.0 V | Shaft Rotation: | Reversible |
| Design Code: | B | Shaft Slinger Indicator: | No Slinger |
| Drip Cover: | No Drip Cover | Speed Code: | Single Speed |
| Duty Rating: | CONT | Motor Standards: | NEMA |
| Electrically Isolated Bearing: | Not Electrically Isolated | Starting Method: | Direct on line |
| Feedback Device: | NO FEEDBACK | Thermal Device - Bearing: | None |
| Front Face Code: | Standard | Thermal Device - Winding: | None |
| Front Shaft Indicator: | None | Vibration Sensor Indicator: | No Vibration Sensor |
| Heater Indicator: | No Heater | Winding Thermal 1: | None |
| | | Winding Thermal 2: | None |

| | | | | | | | | | | |
|----------------------------------|------------------------------|--|-------------|------------|-----------------------|----|--|--------------|-----------|-------|
| Nameplate NP3441LUA | | | | | | | | | | |
| CAT.NO. | EM3667T | | | | | | | | | |
| SPEC | 06C101W969G2 | | | | | | | | | |
| HP | 1.5 | | | | | | | | | |
| VOLTS | 230/460 | | | | | | | | | |
| AMPS | 5/2.5 | | | | | | | | | |
| RPM | 1170 | | | | | | | | | |
| FRAME | 182T | | | | HZ | 60 | | | PH | 3 |
| SF | 1.15 | | CODE | K | DES | B | | CLASS | F | |
| NEMA NOM. EFF | 87.5 | | PF | 65 | | | | | | |
| RATING | 40C AMB-CONT | | | | | | | | | |
| CC | 010A | | | | USABLE AT 208V | | | | | 5.2 |
| ENCL | TEFC | | SER | | | | | | | |
| DE | 6206 | | | ODE | 6205 | | | | | |
| VPWM INVERTER READY | SFA 5.5/2.75 | | | | | | | | | |
| CT6-60H(10:1)VT3-60H(20:1 | 50HZ 1.5HP 190/380V 5.8/2.9A | | | | | | | | | |
| | | | | | | | | | | SF1.0 |

| Parts List | | |
|---------------|--|----------|
| Part Number | Description | Quantity |
| SA213050 | SA 06C101W969G2 | 1.000 EA |
| RA200276 | RA 06C101W969G2 | 1.000 EA |
| 36FN3000C01SP | EXFN, PLASTIC, 5.25 OD, .912 ID | 1.000 EA |
| HW3201A05 | 3/8-16 EYEBOLT | 1.000 EA |
| 06CB3000 | BALDOR CONDUIT BOX CAST | 1.000 EA |
| 06GS1000 | GASKET,CONDUIT BOX | 1.000 EA |
| 51XW2520A12 | SCREW, HEX SER SLT HD, ZN, 1/4-20 X .75 | 2.000 EA |
| 11XW1032G06 | 10-32 X .38, TAPTITE II, HEX WSHR SLTD U | 1.000 EA |
| HW3001B02 | BRASS CUP WASHER W/GROUND SYMBOL TAB, | 1.000 EA |
| 36FE1101B47 | FREP ASSEMBLY FOR ROUTING PURPOSES | 1.000 EA |
| HW4500A01 | 1641B(ALEMITE)400 UNIV, GREASE FITT | 1.000 EA |
| HW5100A05 | WVY WSHR F/205 & 304 BRGS | 1.000 EA |
| 36PE1100A01 | PUEP ASSEMBLY FOR ROUTING PURPOSES | 1.000 EA |
| HW4500A01 | 1641B(ALEMITE)400 UNIV, GREASE FITT | 1.000 EA |
| HA3101A34 | THRUBOLT- 1/4-20 X 10.375 | 4.000 EA |
| XY2520A12 | 1/4-20 HEX NUT, DIRECTIONAL SERRATIONS | 4.000 EA |
| 51XB1214A16 | 12-14X1.00 HXWSSLD SERTYB | 1.000 EA |
| 36FH4009A03SP | IEC FH , W/ PRIMER | 1.000 EA |
| 51XW1032A06 | 10-32 X .38, TAPTITE II, HEX WSHR SLTD S | 3.000 EA |
| 06CB3500 | BALDOR CONDUIT BOX LID | 1.000 EA |
| 06GS1001 | BALDOR CONDUIT BOX GASKET | 1.000 EA |
| 51XW2520A12 | .25-20 X .75, TAPTITE II, HEX WSHR SLTD | 2.000 EA |
| HW2501E16 | KEY, 1/4 SQ X 1.750 | 1.000 EA |
| HA7000A02 | KEY RETAINER RING, 1 1/8 DIA, 1 3/8 DIA | 1.000 EA |

| Parts List (continued) | | |
|-------------------------------|--|-----------------|
| Part Number | Description | Quantity |
| 85XU0407S04 | 4X1/4 U DRIVE PIN STAINLESS | 2.000 EA |
| LB1115N | LABEL,LIFTING DEVICE (ON ROLLS) | 1.000 EA |
| MJ1000A02 | GREASE, MOBIL POLYREX EM - 124047 | 0.050 LB |
| MG1000Y03 | MUNSELL 2.53Y 6.70/ 4.60, GLOSS 20, | 0.026 GA |
| LC0005E01 | CONN.DIA./WARNING LABEL (LC0005/LB1119N) | 1.000 EA |
| NP3441LUA | ALUM SUPER-E VPWM INV READY UL CSA-EEV C | 1.000 EA |
| 36PA1001 | PKG GRP, PRINT PK1017A06 | 1.000 EA |
| MN416A01 | TAG-INSTAL-MAINT no wire (2100/bx) 4/22 | 1.000 EA |

| Accessories | | |
|--------------------|--------------------|-------------------|
| Part Number | Description | Multiplier |
| 36-1749 | C FACE KIT | A8 |

AC Induction Motor Performance Data

Record # 31767

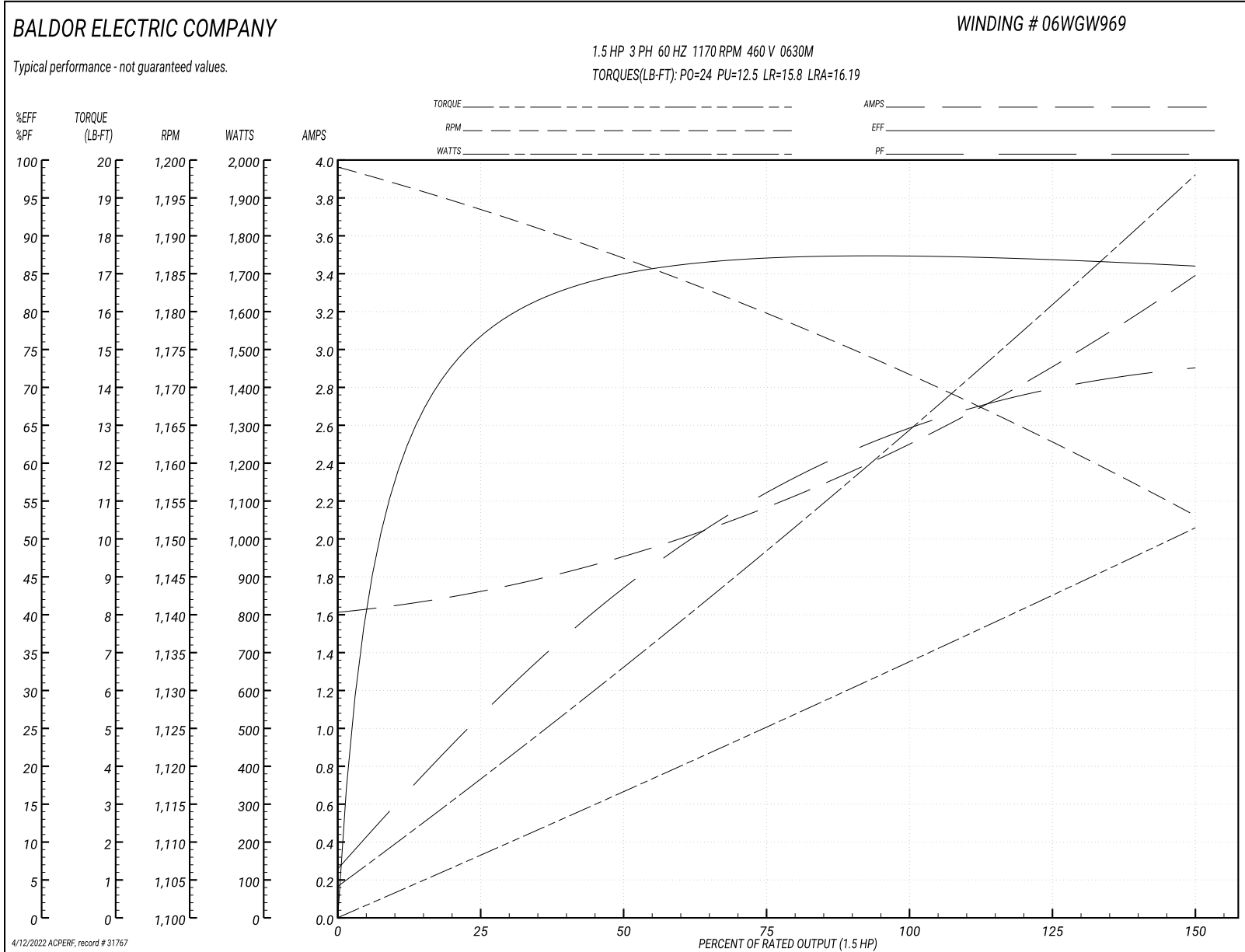
Typical performance - not guaranteed values

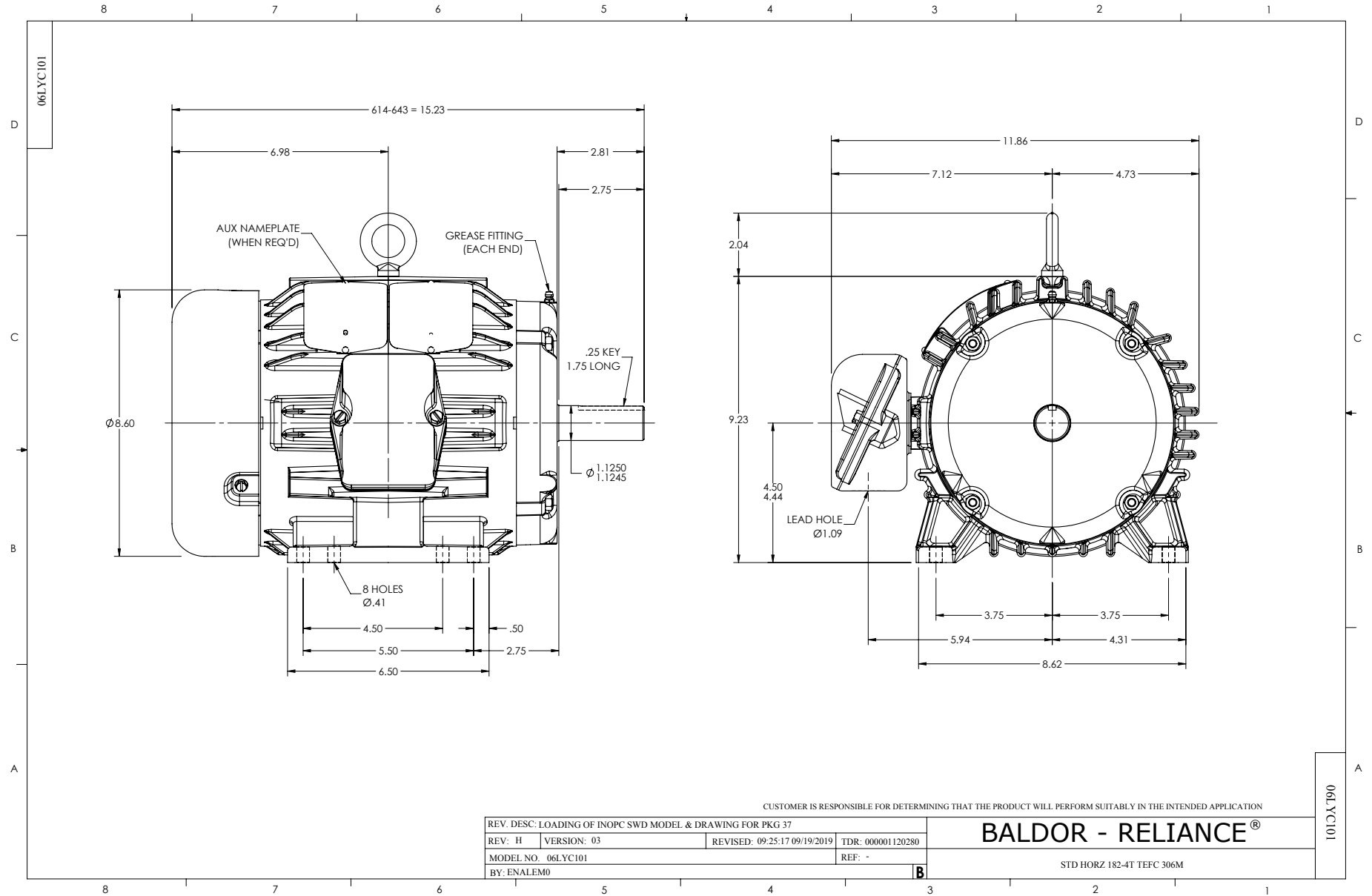
| Winding: 06WGW969-R001 | | Type: 0630M | | Enclosure: TEFC | | |
|-------------------------------|--------------------------|----------------------------|--|------------------------|--|--|
| Nameplate Data | | | 460 V, 60 Hz: High Voltage Connection | | | |
| Rated Output (HP) | 1.5 | Full Load Torque | 6.77 LB-FT | | | |
| Volts | 230/460 | Start Configuration | direct on line | | | |
| Full Load Amps | 5.0/2.5 | Breakdown Torque | 24 LB-FT | | | |
| R.P.M. | 1170 | Pull-up Torque | 12.5 LB-FT | | | |
| Hz | 60 Phase | 3 | Locked-rotor Torque | 15.8 LB-FT | | |
| NEMA Design Code | B KVA Code | K | Starting Current | 16.19 A | | |
| Service Factor (S.F.) | 1.15 | | No-load Current | 1.63 A | | |
| NEMA Nom. Eff. | 87.5 Power Factor | 65 | Line-line Res. @ 25°C | 7.34 Ω | | |
| Rating - Duty | 40C AMB-CONT | | Temp. Rise @ Rated Load | 26°C | | |
| S.F. Amps | | | Temp. Rise @ S.F. Load | 32°C | | |

Load Characteristics 460 V, 60 Hz, 1.5 HP

| % of Rated Load | 25 | 50 | 75 | 100 | 125 | 150 | S.F. |
|------------------------|-----------|-----------|-----------|------------|------------|------------|-------------|
| Power Factor | 27 | 44 | 56 | 65 | 69 | 73 | 67 |
| Efficiency | 76.9 | 85 | 87.1 | 87.6 | 87 | 86 | 87.2 |
| Speed | 1193.7 | 1186.9 | 1179.4 | 1171.7 | 1163.1 | 1152.9 | 1167 |
| Line amperes | 1.7 | 1.9 | 2.18 | 2.51 | 2.92 | 3.38 | 2.76 |

Performance Graph at 460V, 60Hz, 1.5HP Typical performance - Not guaranteed values





CUSTOMER IS RESPONSIBLE FOR DETERMINING THAT THE PRODUCT WILL PERFORM SUITABLY IN THE INTENDED APPLICATION

| | | | |
|--|-------------|------------------------------|-------------------|
| REV. DESC: LOADING OF INOPC SWD MODEL & DRAWING FOR PKG 37 | | | |
| REV: H | VERSION: 03 | REVISED: 09/25/17 09/19/2019 | TDR: 000001120280 |
| MODEL NO. 06LYC101 | | REF: - | |
| BY: ENALEM0 | | | |

BALDOR - RELIANCE®

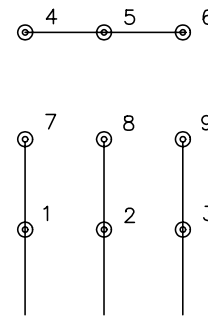
STD HORZ 182-4T TEFC 306M

06LYC101

CD0005

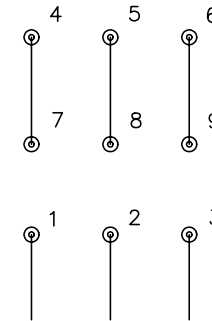


LOW VOLTAGE
(2Y)



LINE

HIGH VOLTAGE
(1Y)



LINE

NOTES:

1. INTERCHANGE ANY TWO LINE LEADS TO REVERSE ROTATION.
2. OPTIONAL THERMOSTATS ARE PROVIDED WHEN SPECIFIED.
3. ACTUAL NUMBER OF INTERNAL PARALLEL CIRCUITS MAY BE A MULTIPLE OF THOSE SHOWN ABOVE.
4. LEAD COLORS ARE OPTIONAL. LEADS MUST ALWAYS BE NUMBERED AS SHOWN.

REV. DESC: REVISE TO SHOW OPTIONAL COLORS

REV. LTR: E BY: JLP

REVISED: 01/19/99 10:15

TDR: 0171435

9000D

FILE: AAA00005140

MDL: -

MTL: -

BALDOR ELECTRIC Co.

3PH, DV, 9 LEADS

CD0005