

BALDOR® • RELIANCE 

Product Information Packet

EM3710T-9

7.5HP, 1765RPM, 3PH, 60HZ, 213T, 3744M, TEFC, F

Part Detail							
Revision:	H	Status:	PRD/A	Change #:		Proprietary:	No
Type:	AC	Elec. Spec:	37WGR648	CD Diagram:	CD0005	Mfg Plant:	
Mech. Spec:	37N527	Layout:	37LYN527	Poles:	04	Created Date:	10-28-2015
Base:	RG	Eff. Date:	11-01-2021	Leads:	9#14		

Specs			
Catalog Number:	EM3710T-9	Heater Indicator:	No Heater
Enclosure:	TEFC	Insulation Class:	F
Frame:	213T	Inverter Code:	Not Inverter
Frame Material:	Steel	KVA Code:	H
Output @ Frequency:	7.500 HP @ 60 HZ	Lifting Lugs:	Standard Lifting Lugs
Synchronous Speed @ Frequency:	1800 RPM @ 60 HZ	Locked Bearing Indicator:	No Locked Bearing
Voltage @ Frequency:	460.0 V @ 60 HZ	Motor Lead Quantity/Wire Size:	9 @ 14 AWG
	230.0 V @ 60 HZ	Motor Lead Exit:	Ko Box
XP Class and Group:	None	Motor Lead Termination:	Flying Leads
XP Division:	Not Applicable	Motor Type:	3744M
Agency Approvals:	UR	Mounting Arrangement:	F1
	CSA EEV	Power Factor:	76
	CSA	Product Family:	WP Below Decks Marine Duty
Auxillary Box:	No Auxillary Box	Pulley End Bearing Type:	Ball
Auxillary Box Lead Termination:	None	Pulley Face Code:	Standard
Base Indicator:	Rigid	Pulley Shaft Indicator:	Standard
Bearing Grease Type:	Polyrex EM (-20F +300F)	Rodent Screen:	None
Blower:	None	Shaft Extension Location:	Pulley End

Current @ Voltage:	10.100 A @ 460.0 V	Shaft Ground Indicator:	No Shaft Grounding
	20.200 A @ 230.0 V	Shaft Rotation:	Reversible
	21.500 A @ 208.0 V	Shaft Slinger Indicator:	Shaft Slinger
Design Code:	C	Speed Code:	Single Speed
Drip Cover:	No Drip Cover	Motor Standards:	NEMA
Duty Rating:	CONT	Starting Method:	Direct on line
Electrically Isolated Bearing:	Not Electrically Isolated	Thermal Device - Bearing:	None
Feedback Device:	NO FEEDBACK	Thermal Device - Winding:	None
Front Face Code:	Standard	Vibration Sensor Indicator:	No Vibration Sensor
Front Shaft Indicator:	None	Winding Thermal 1:	None
		Winding Thermal 2:	None

Nameplate NP1267L										
CAT.NO.	EM3710T-9									
SPEC.	37N527R648G1									
HP	7.5									
VOLTS	230/460									
AMP	20.2/10.1									
RPM	1765									
FRAME	213T				HZ	60			PH	3
SER.F.	1.15		CODE	H	DES	C		CL	F	
NEMA-NOM-EFF	91.7		PF	76						
RATING	40C AMB-CONT									
CC	010A				USABLE AT 208V			21.5		
DE	6307				ODE	6206				
ENCL	TEFC		SN							

Parts List		
Part Number	Description	Quantity
SA310036	SA 37N527R648G1	1.000 EA
RA297410	RA 37N527R648G1	1.000 EA
37FN3002C01	EXFN, PLASTIC, 6.00 OD, 1.155 ID	1.000 EA
HW3200A01	3/8-16X3/4 I-BLT WELDED F/S	1.000 EA
37CB3005A04	37 CB .75 NPT @ 6:00	1.000 EA
37GS1002	1/8" NEOPRENE GASKET, CONDUIT BOX	1.000 EA
51XW2520A12	.25-20 X .75, TAPTITE II, HEX WSHR SLTD	2.000 EA
11XW1032G06	10-32 X .38, TAPTITE II, HEX WSHR SLTD U	1.000 EA
37EP3101C12	FREP TEFC L&M W/GRSR,REL,SLINGER, DRAIN	1.000 EA
HW4500A17	317400 ALEMITE GREASE RELIEF	1.000 EA
HW4500A01	1641B(ALEMITE)400 UNIV, GREASE FITT	1.000 EA
HA4054	SHORT T-DRAIN FITTING, .125" N.P.T.	1.000 EA
HW5100A06	W2420-025 WVY WSHR (WB)	1.000 EA
37EP3100B12	PUEP 307 BRG W/GREASER,RELIEF,.125	1.000 EA
HW4500A17	317400 ALEMITE GREASE RELIEF	1.000 EA
HW4500A01	1641B(ALEMITE)400 UNIV, GREASE FITT	1.000 EA
HA4054	SHORT T-DRAIN FITTING, .125" N.P.T.	1.000 EA
XY3118A12	5/16-18 HEX NUT DIRECTIONAL SERRATION	4.000 EA
07FH4007SP	PRIMED	1.000 EA
51XW1032A06	10-32 X .38, TAPTITE II, HEX WSHR SLTD S	3.000 EA
37CB4516	LIPPED LID FOR 37 FRAME NEC KOBX	1.000 EA
37GS1008A01	37 GS FOR CB LID - BLACK NEOPRENE	1.000 EA
51XW0832A07	8-32 X .44, TAPTITE II, HEX WSHR SLTD SE	4.000 EA
HW4600B36SP	V-RING SLINGER 1.188 X 1.690 X .24 VITON	1.000 EA

Parts List (continued)		
Part Number	Description	Quantity
HW4600B31SP	V-RING SLINGER 1.438 X 1.758 X .24 VITON	1.000 EA
HW2501F21	KEY, 5/16 SQ X 2.375	1.000 EA
HA7000A02	KEY RETAINER RING, 1 1/8 DIA, 1 3/8 DIA	1.000 EA
MJ5001A27	32220KN GRAY SEALER *MIN BUY 4 QTS=1GAL	0.001 QT
85XU0407S04	4X1/4 U DRIVE PIN STAINLESS	2.000 EA
LB1115N	LABEL,LIFTING DEVICE (ON ROLLS)	1.000 EA
MJ1000A02	GREASE, MOBIL POLYREX EM - 124047	0.050 LB
51XB1214A16	12-14X1.00 HXWSSLD SERTYB	1.000 EA
MG1500Y02	WILKOPON PRIMER YELLOW	0.028 GA
MG1025N19	WILKOFASST, 778.50, RELIANCE BLUE-GREEN	0.028 GA
HA3104A17	5/16-18X13.250 T-BLT/OHIO	4.000 EA
LC0005E01	CONN.DIA./WARNING LABEL (LC0005/LB1119N)	1.000 EA
NP1267L	SS SUPER-E UL CSA-EEV CC PREM	1.000 EA
G0PA1000	PKG GRP, PRINT PK1026A06	1.000 EA
MN416A01	TAG-INSTAL-MAINT no wire (2100/bx) 4/22	1.000 EA

AC Induction Motor Performance Data

Record # 46685

Typical performance - not guaranteed values

Winding: 37WGR648-R001		Type: 3744M	Enclosure: TEFC		
Nameplate Data			460 V, 60 Hz: High Voltage Connection		
Rated Output (HP)	7.5	Full Load Torque	22.45 LB-FT		
Volts	230/460	Start Configuration	direct on line		
Full Load Amps	20.2-10.1	Breakdown Torque	61.2 LB-FT		
R.P.M.	1765	Pull-up Torque	49.9 LB-FT		
Hz	60 Phase	3	Locked-rotor Torque	62.06 LB-FT	
NEMA Design Code	C	KVA Code	H	Starting Current	61.95 A
Service Factor (S.F.)	1.15	No-load Current	4.69 A		
NEMA Nom. Eff.	91.7	Power Factor	76	Line-line Res. @ 25°C	1.15 Ω
Rating - Duty	40C	AMB-CONT	Temp. Rise @ Rated Load	62°C	
S.F. Amps			Temp. Rise @ S.F. Load	76°C	
			Locked-rotor Power Factor	40.2	
			Rotor inertia	1.08 LB-FT ²	

Load Characteristics 460 V, 60 Hz, 7.5 HP

% of Rated Load	25	50	75	100	125	150	S.F.
Power Factor	39	61	72	77	80	81	78
Efficiency	87.3	91.6	92.1	91.7	90.9	89.7	91.3
Speed	1792	1784	1775	1765	1753	1741	1759
Line amperes	5.22	6.43	8.07	9.97	12.2	14.53	11.4

Performance Graph at 460V, 60Hz, 7.5HP Typical performance - Not guaranteed values

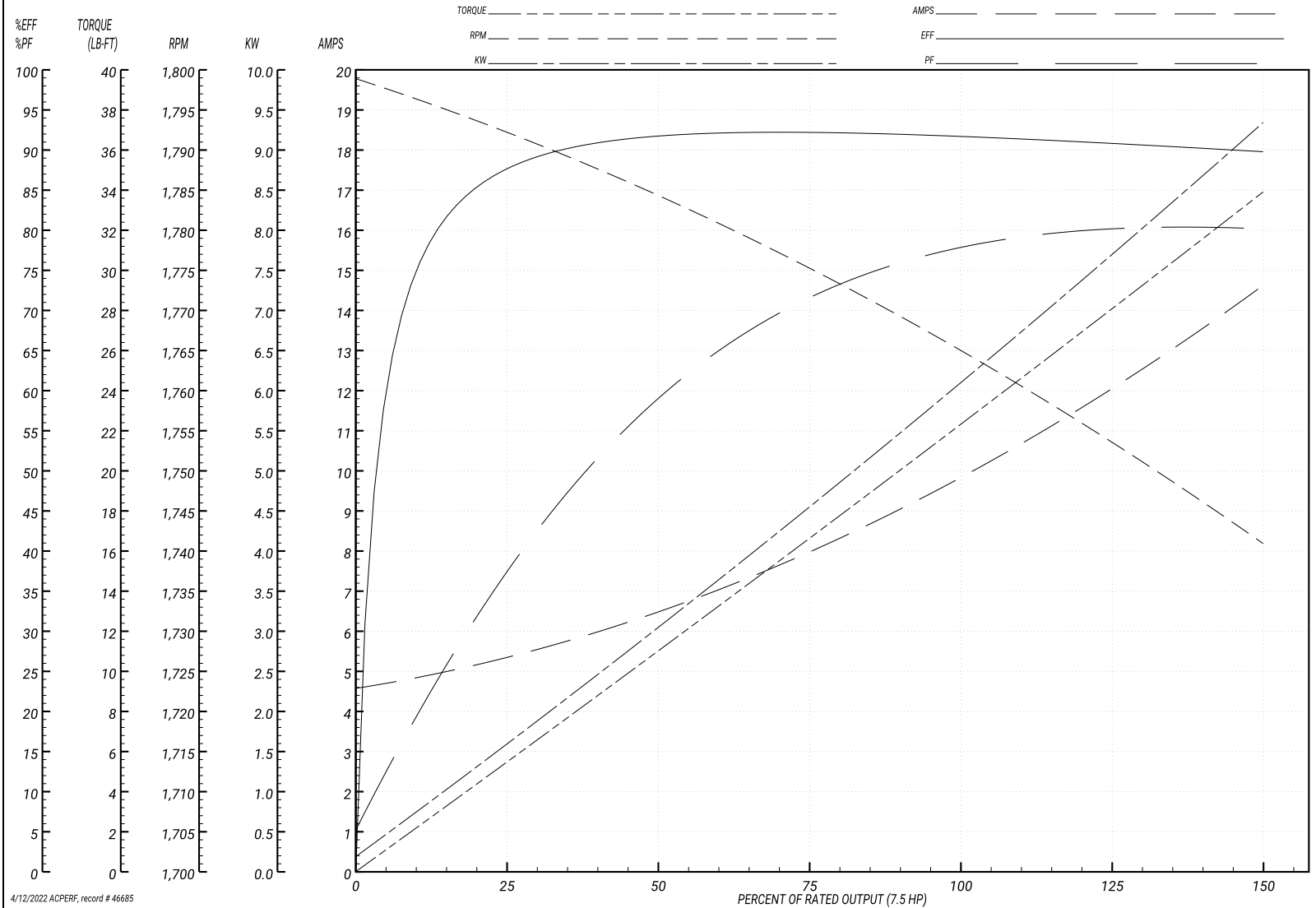
BALDOR ELECTRIC COMPANY

WINDING # 37WGR648

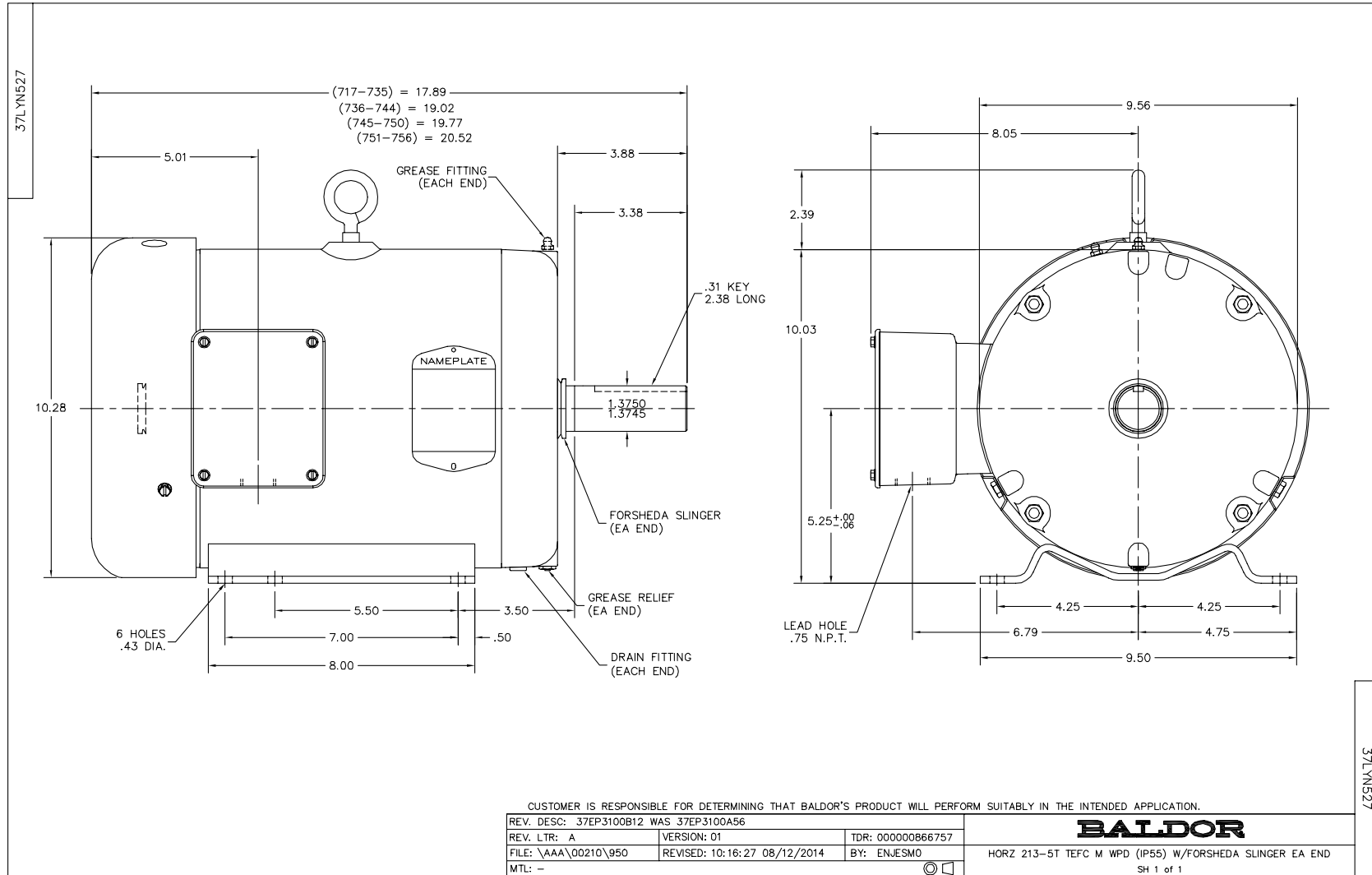
Typical performance - not guaranteed values.

7.5 HP 3 PH 60 HZ 1765 RPM 460 V 3744M

TORQUES(LB-FT): PO=61.2 PU=49.9 LR=62.06 LRA=61.95



4/12/2022 ACPERF, record # 46685



CD0005

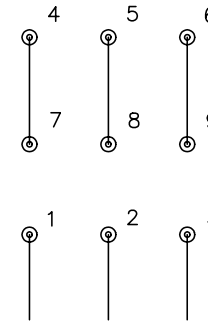


LOW VOLTAGE
(2Y)



LINE

HIGH VOLTAGE
(1Y)



LINE

NOTES:

1. INTERCHANGE ANY TWO LINE LEADS TO REVERSE ROTATION.
2. OPTIONAL THERMOSTATS ARE PROVIDED WHEN SPECIFIED.
3. ACTUAL NUMBER OF INTERNAL PARALLEL CIRCUITS MAY BE A MULTIPLE OF THOSE SHOWN ABOVE.
4. LEAD COLORS ARE OPTIONAL. LEADS MUST ALWAYS BE NUMBERED AS SHOWN.

REV. DESC: REVISE TO SHOW OPTIONAL COLORS			
REV. LTR: E	BY: JLP	REVISED: 01/19/99 10:15	TDR: 0171435
90000		FILE: AAA00005140	MDL: -
		MTL: -	

BALDOR ELECTRIC Co.

3PH, DV, 9 LEADS

CD0005