

SPECIFICATION TABLE OF 3-PHASE SQUIRREL CAGE INDUCTION MOTOR	CUSTOMER		USER	
	INQ. NO.		EQUIPMENT	
	JOB NO.		MACHINE	
	TOTAL SETS		ITEM NO.	

Item	Terms	Description				
1	Model	AEHH8N				
2	Code or Standard	Dimensions	Frame Assignment	Performance	Test	
		NEMA	TECO	NEMA	NEMA	
3	Rating	350 HP 2 Pole 460/(800) Volt 3 Phase 60 Hz (can be used in 50Hz 380V)				
4	Service Duty	Continuous Rating , Service Factor 1.15				
5	Starting Method	D.O.L(Direct On Line) or V.V.V.F(Variable Voltage Variable Frequency) or Y-Δ Starting				
6	Rotation	Facing The Drive End : CCW(Counter ClockWise)				
7	Drive Method	Direct Coupling				
		Amb. Temp. : -15 ~ 40 °C				
		Humidity : Less Than 90 %RH				
8	Environment	Altitude : Up to 3300 FT				
		IP55 : Totally Enclosed Indoor				
9	Enclosure & Protection	IP55 : Totally Enclosed Indoor				
10	Cooling	TEFC: Totally Enclosed Fan Cooled				
11	Mounting	IM1001 : HS, Foot				
12	Dimensions	Dr# 3105C578531	Frame No : 449TS(X)			
13	Frame & Bracket	Frame : Cast Iron	Bracket : Cast Iron			
14	Fan & Fan Cover	Fan :Alumium	Fan Cover :Steel plate			
15	Terminal Box	Cast Iron				
16	Lead Terminals	[(R38-16)X2]X6				
17	Lubricant	ESSO Polyrex EM Grease				
18	Painting	Color : NO.700 MUNSELL N1.0				
19	Stator Winding	Ins. Class F				
20	Rotor Conductor	Al-Die Cast	WK^2 : 57.40 Lb-ft^2			
21	Starting Performance	LRC 60Hz 2206Amp / 50Hz 2122Amp	LRT 60Hz 120% / 50Hz 110% FLT			
22	Operating Performance	Hz/V	60/460	50/380	Break Down Torque 60Hz 300% FLT 50Hz 270% FLT	
		%Load	100	100		
		Amp.	372	458		
		*LRC=Lock Rotor Current	Eff.%	95.8	95.5	Temp. Rise Limit. (Resistance) Stator 115 °C 60Hz At S.F. 1.15
		*LRT/FLT=Lock Rotor Torque/Full Load Torque	P.F.%	91.0	90.0	
		*FLT=Full Load Torque	R.P.M.	3579	2973	
23	Approximate Weight					
24	Note	1.Tolerances according to NEMA MG1-12 & IEC60034-1 2.Ratings Data : VT 20:1 、 CT 3:1 、 CHP 1:1				

APPD.	Wanghy	Oct. 6 2020		DWG NO.	31057R001-47172
CHKD.	Wanghy	Oct. 6 2020		REV.00	
DWN.	robo8898	Oct. 6 2020		1/1	

TECO Westinghouse

ISSUED 10/06/20	PERFORMANCE DATA 3-PHASE INDUCTION MOTOR	ENCLOSURE
TYPE AEHH8N		CATALOG#

NAMEPLATE INFORMATION

OUTPUT		POLE	FRAME SIZE	VOLTAGE	HZ	RATED AMBIENT	INS. CLASS	NEMA DESIGN	TIME RATING	SERVICE FACTOR
HP	KW									
350	261	2	449TS(X)	460	60	40	F	B	CONT.	1.15

TYPICAL PERFORMANCE

FULL LOAD RPM	EFFICIENCY				POWER FACTOR		
	FULL LOAD		3/4 LOAD	1/2 LOAD	F. L.	3/4 LOAD	1/2 LOAD
	NOM. %	MIN. %	%	%	%	%	%
3579	95.8	95.0	96.4	95.7	91.0	91.0	88.0

CURRENTS			NEMA KVA CODE LETTER
NO LOAD	FULL LOAD	LOCKED ROTOR	
68.5	372	2206	G

TORQUE				INERTIA			ACCEL TIME	
FULL LOAD lb-ft	LOCKED ROTOR %FLT	PULL UP %FLT	BREAK DOWN %FLT	ROTOR WR ² lb-ft ²	NEMA LOAD WK ² lb-ft ²	MAX ALLOWABLE WK ² lb-ft ²	NEMA LOAD WK ² Sec	MAX ALLOWABLE WK ² Sec
515	120	100	300	57.4	281	—	6	—

SAFE STALL TIME IN SECONDS		ALLOWABLE STARTS PER HOUR		SOUND PRESSURE LEVEL @ 3 FT dB(A)
COLD	HOT	COLD	HOT	
20	15	2	1	—

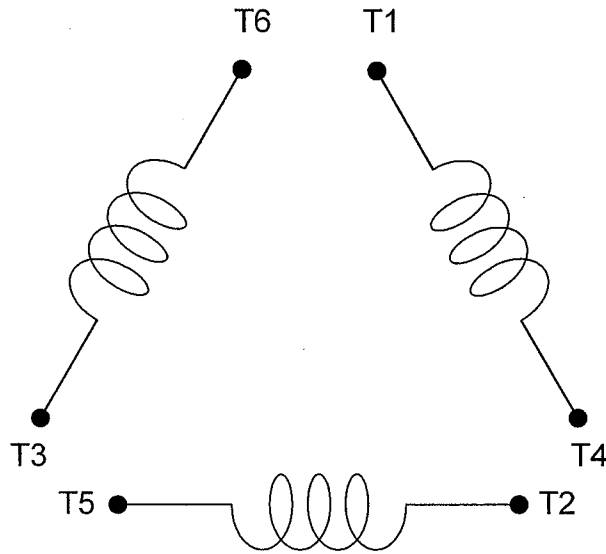
APPROVED:	Wanghy	DRAWING NO.	P.J. HUANG	REVISION 0
-----------	---------------	-------------	-------------------	-------------------

TECO**CONNECTION DIAGRAM**

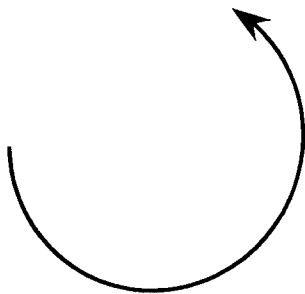
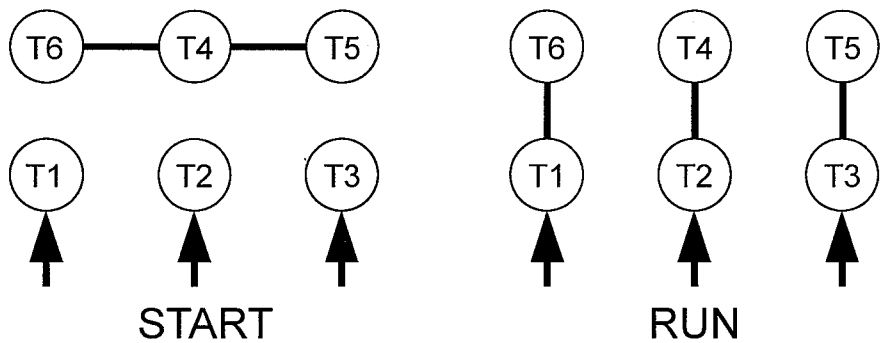
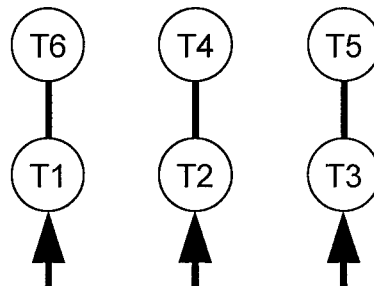
MODEL

DATE :
DEC.04.'02For Δ/Δ connection

DAC-1545-1

SCHEMATIC - Δ/Δ CONNECTION**ROTATION**

(VIEWED FROM DRIVE END)

**CONNECTION** $\Delta-\Delta$ START**ACROSS-THE-LINE**

承	認		
審	核	蔡	Dec.05.02
校	對	林	Dec.04.02
繪	製	林賢龍	DEC,04,'02

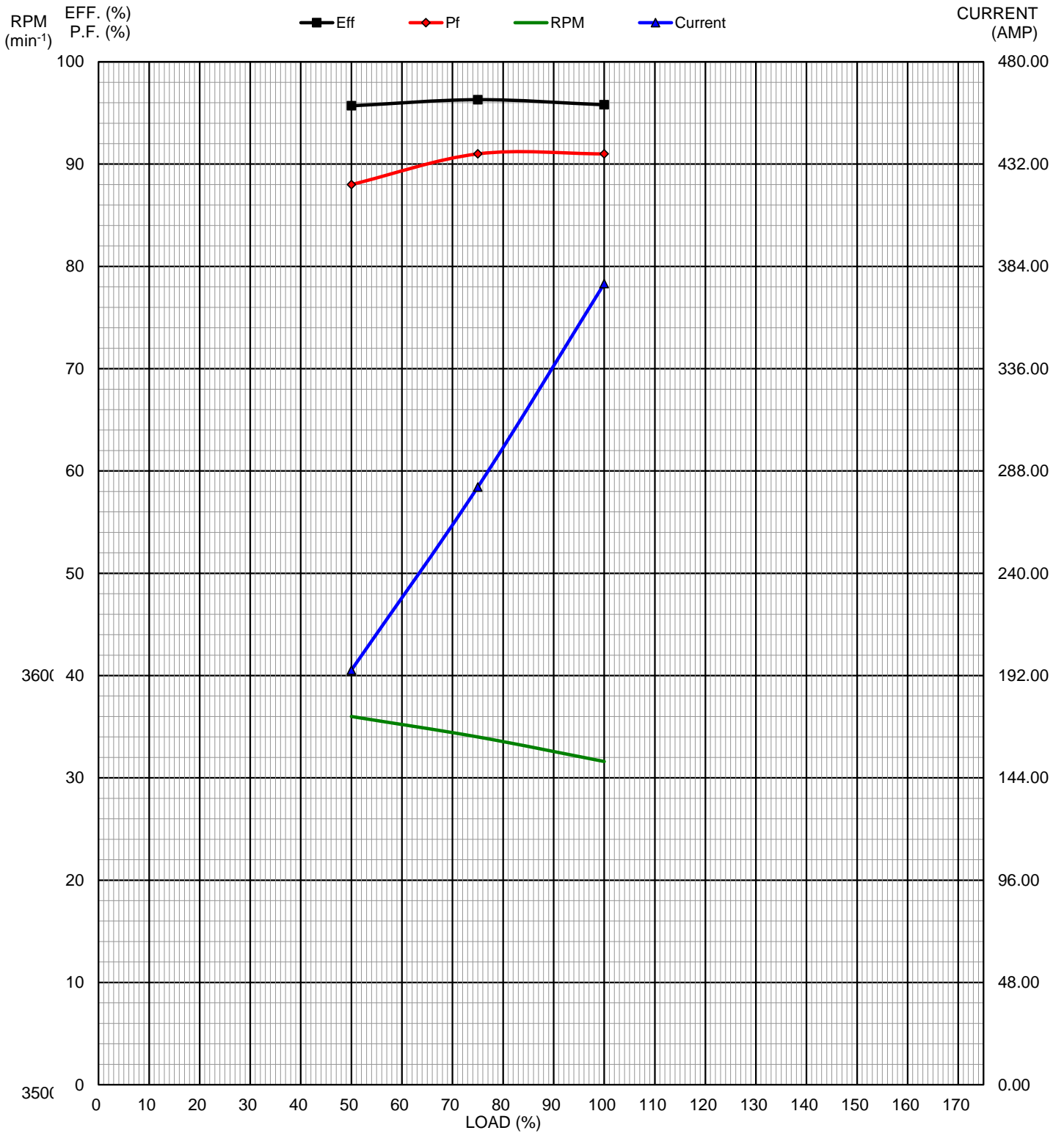
東元電機股份有限公司
TECO ELECTRIC & MACHINERY CO., LTD.
TAIWAN R.O.C.

圖 號：
DAC-1545-1

THREE PHASE INDUCTION MOTOR LOAD CHARACTERISTIC CURVE

NO. : TERAA19901012
 POLE : 2
 HZ : 60

TYPE : AEHH8N
 HP : 350
 VOLT. : 460



APPD.	Yang.Ben	20201006
CHKD.	Wang	20201006
DWN.	ROBOHUANG	20201006



DWG NO. Rev.00
 TERAA19901012
 E-P-C-S

T-N CURVE

NO.: TERA19901012

TYPE: AEHH8N

HZ: 60

POLE: 2

VOLT.: 460

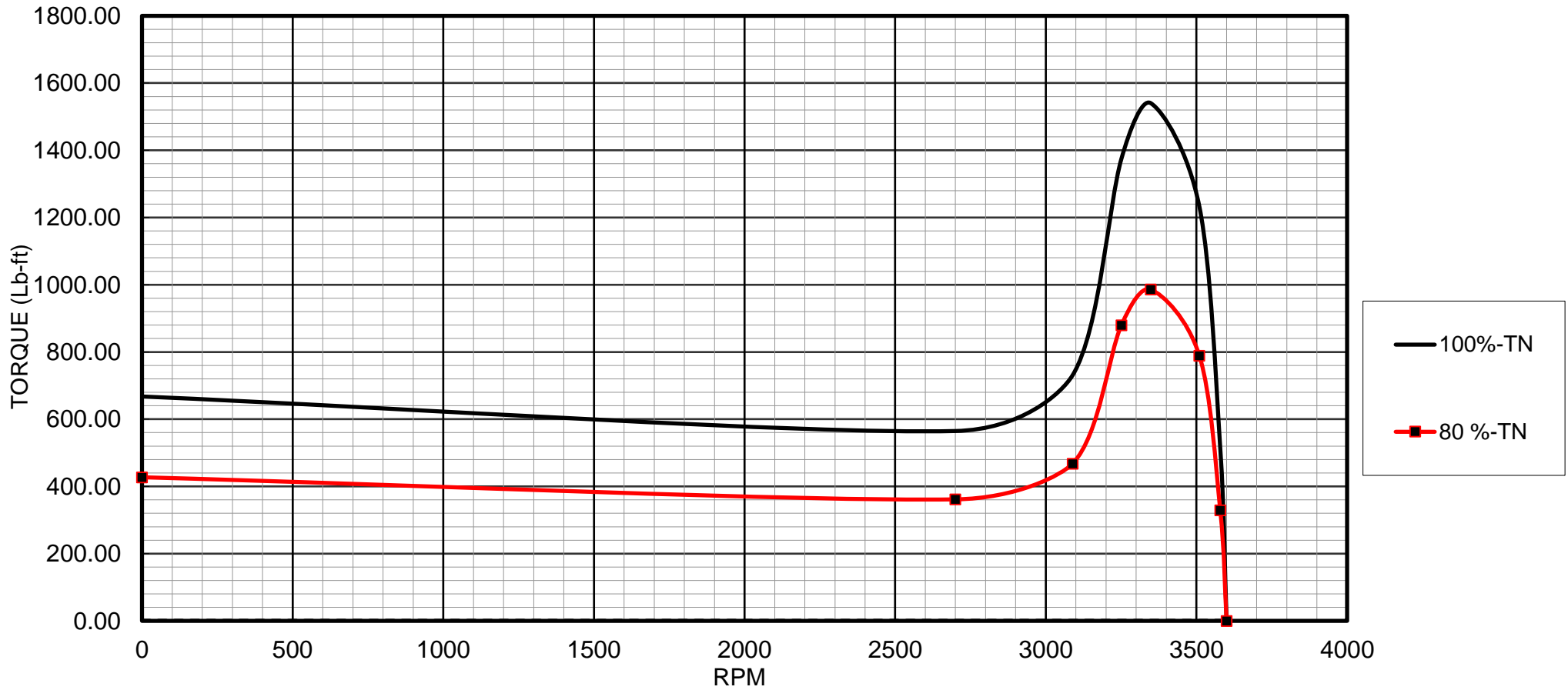
HP : 350

Ts : 667.5 Lb-ft

Tmin. : 564.8 Lb-ft

Tmax. : 1540.4 Lb-ft

Tf : 513.5 Lb-ft



APPD.	Wang	20201006
CHKD.	Wang	20201006
DWN.	ROBOHUANG	20201006

TECO   **Westinghouse**

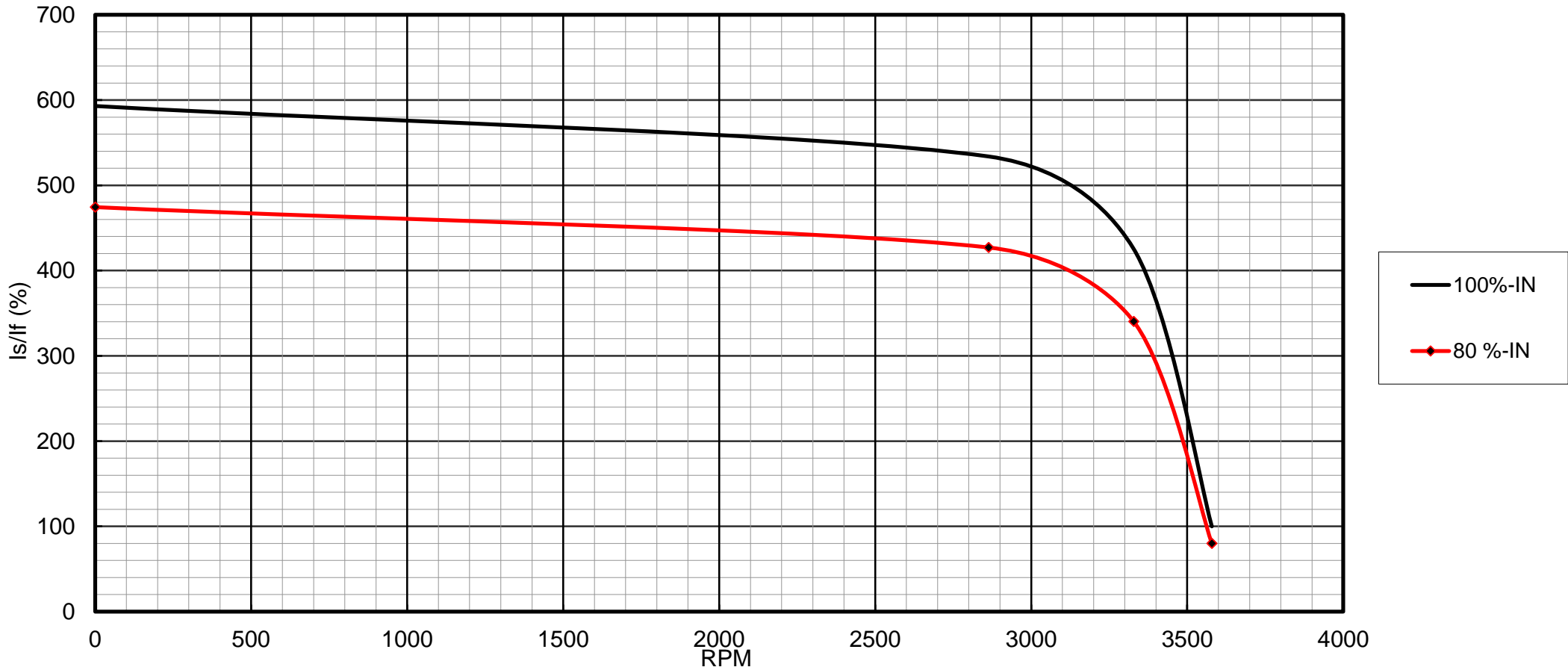
DWG NO. Rev.00
T-N

I-N CURVE

NO. : TERA19901012
 POLE : 2
 HZ : 60

TYPE : AEHH8N
 HP : 350
 VOLT. : 460

Full load current : 372 A
 Lock rotor current / Full load current : 593 %



APPD.	Wang	20201006
CHKD.	Wang	20201006
DWN.	ROBOHUANG	20201006

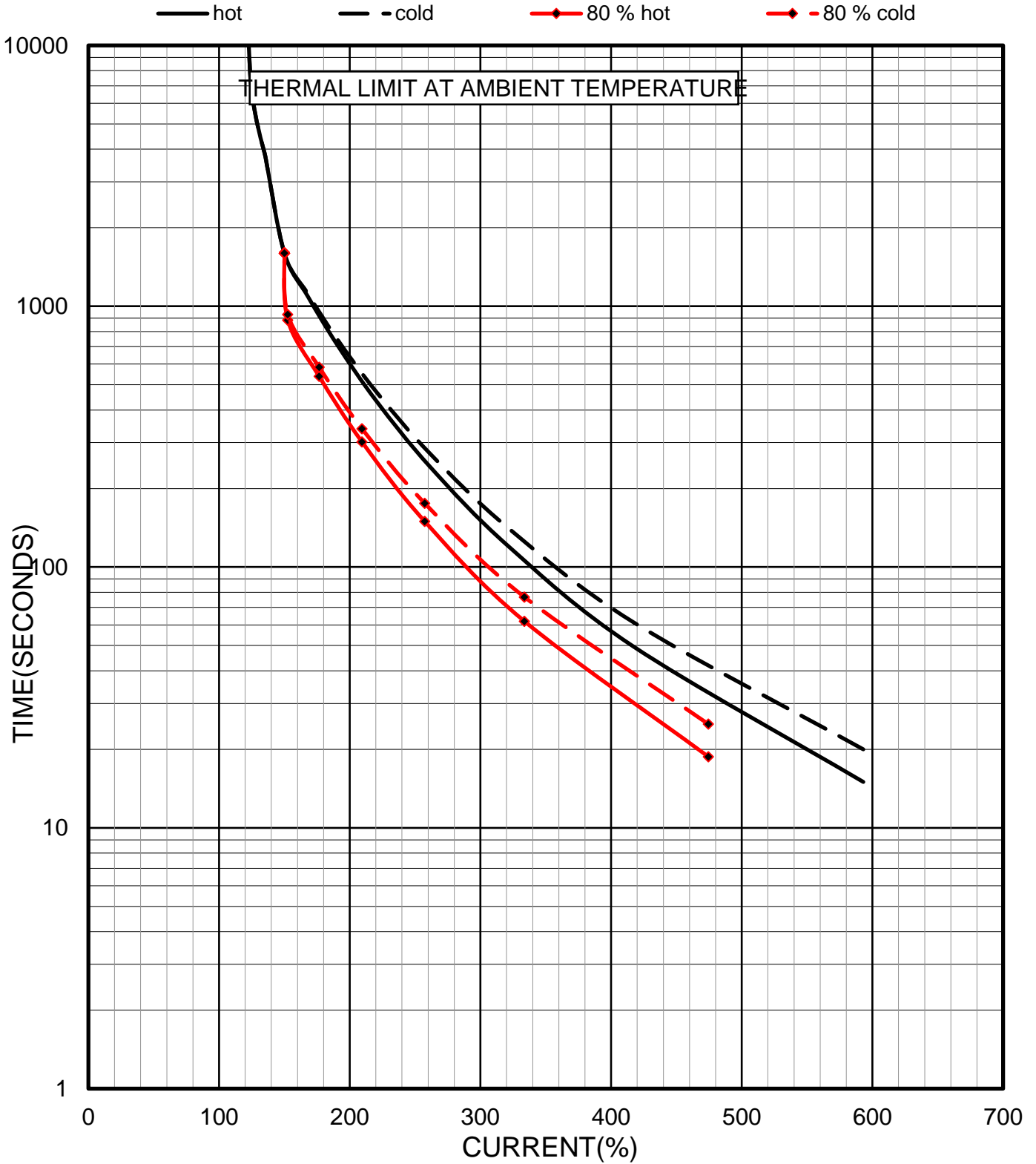


DWG NO. Rev.00
 I-N

THERMAL LIMIT CURVES

NO. : TERA19901012
 POLE : 2
 HZ : 60
 Load WK2 (LB-FT2) : 281
 Motor WK2 (LB-FT2) : 57.4
 Full load current : 372 A

TYPE : AEHH8N
 HP : 350
 VOLT. : 460



APPD.	Wang	20201006
CHKD.	Wang	20201006
DWN.	ROBOHUANG	20201006



DWG NO. Rev.00
 TIME

11

10

9

8

7

6

5

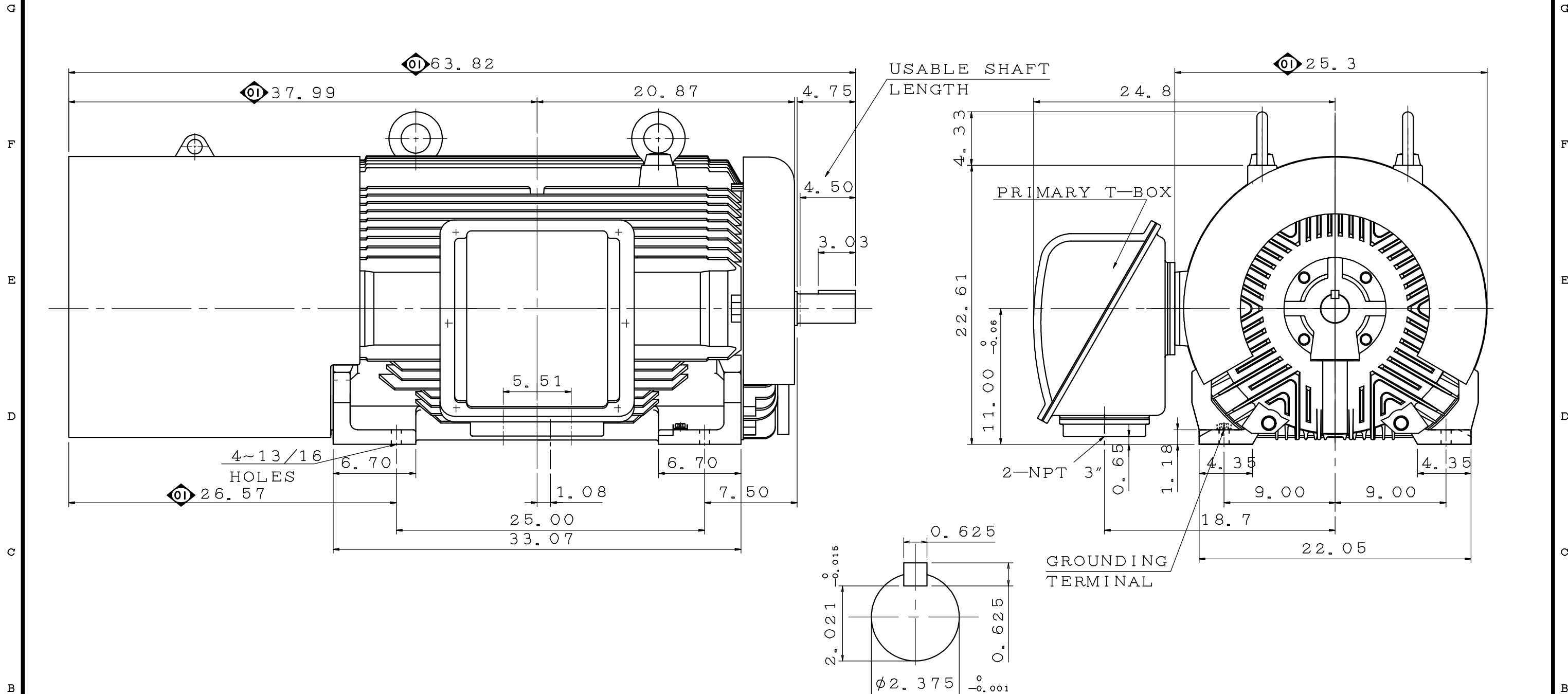
4

3

2

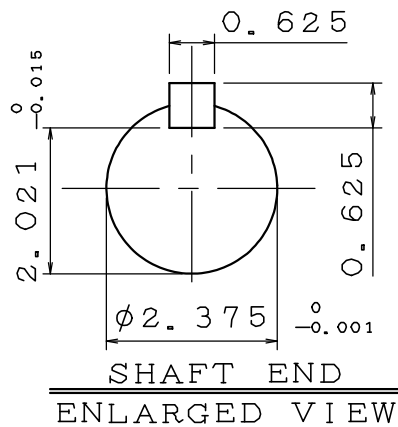
1

POLE	HP	kW	Hz	VOLT	r/min(RPM)	INS	RATING	DIMENSION IN	APPROX WEIGHT	BEARINGS
2	350	.	60	460/(800)	3600	F	CONT.	INCH	3000 LB	DE:6314C3 NDE:6314C3



NOTE:

- 1. FOR DIRECT FLEXBLE COUPLING
- 2. ENCLOSURE: IP55 PROTECTION
- 3. NON-SPARKING FAN
- ① 4. DIRECTION OF ROTATION : C. C. W.
(view from drive end)



OUTLINE DIMENSIONS
3-PHASE INDUCTION MOTOR

MOTOR TYPE	AEHH8N-11-	FRAME NO.	449TS(X)
CUSTOMER	.	DATE	.
ORDER NO.	.	TRANS. SHEET	.

APPD.	M. C. JENG	01.21.20
CHKD.	M. C. JENG	01.21.20
DWG.	H. S. Hsu	01.21.20

TECO Westinghouse

DWG NO.
31057C578531

① 09.28.20	陳晴婷
------------	-----

第三角法

11

10

9

8

7

6

5

4

3

2

1