

TOSHIBA

EQP Global[®] 841



5 FIVE YEAR WARRANTY

Efficiency, Quality, & Performance (EQP) – The EQP Global[®] 841 motor series is Toshiba’s next-generation NEMA Premium[®] efficiency motor series.

This cutting-edge motor product line is designed to meet or exceed the competitive demands of the global market, as well as the amended integral horsepower (HP) rule IHMR 2016, while maintaining the high reliability and quality expected from Toshiba.

The EQP Global 841 specifically addresses the needs of the petrochemical industry, where premium performance and reliability are imperative. Building on over 20 years of success with our EQP III motor series, the EQP Global 841 features design enhancements on the rotor, stator, frame, brackets, fan, and bearings.

Our EQP philosophy extends beyond great products. We provide solutions and Global Supply Chain Management Systems (GSCMS) to meet the evolving needs of our global customers.

- NEMA Premium[®] Efficiency

Horsepower	3/4 to 400 HP
Speed (60 Hz)	3600, 1800, 1200, or 900 RPM
Voltage (60 Hz)	460 or 575 V
Enclosure	Totally Enclosed Fan Cooled
Frame Size	143T through 449T
Protection	IP56
Construction	All Cast Iron
Insulation	Class F Inverter Duty, Exceeds NEMA MG1 Part 31
Vibration	Typically 0.04 IPS or Less, Unfiltered
Mounting	Horizontal & Vertical with C and D Flange Options
Environment	Severe Duty, Suitable for Use in Class I Division 2 Hazardous Locations



EQP GLOBAL 841

**LOW VOLTAGE MOTOR
PETRO-CHEMICAL DUTY**



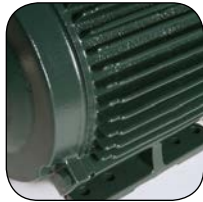


BUILT FOR PETRO-CHEMICAL DUTY APPLICATIONS



Nameplate

- 304 Stainless Steel
- NEMA Premium® Design
- Etched or Engraved Lettering
- Inverter Duty Rated
- Lubrication Label on All Frames
- Class I, Division 2 Groups A/B/C/D



Construction

- Cast Iron Frame, Fan Cover, Conduit Box & Bearing Brackets
- Multi-Mount Capabilities on All Frames (See Appendix B in Industrial Catalog)
- Lead Seal Gasket Provided Between Motor Frame & Conduit Box
- Typical Unfiltered Vibration Levels of 0.04 IPS or Less
- Protective Coating on All Internal Machined Surfaces
- IP56 Protection
- Multiple Drain Provisions for Horizontal & Vertical Mounting



Conduit Box

- Gasketed Cast Iron Construction
- UL Ground Lug
- Lead-Separation Protection
- Terminal Lugs on All Frames
- Rotatable 90° Increments
- NPT Conduit Opening



Bearing System

- Oversized 300 Series Bearings (DE & ODE)
- Low Temperature Rise for Extended Life
- L-10 Bearing Life of 150,000 Hours Direct-Coupled
- L-10 Bearing Life of 50,000 Hours Belted
- Labyrinth Seal on All Frames (DE & ODE)
- Open Regreasable on All Frames



Insulation System

- Low-Loss Electrical Steel
- Exceeds NEMA MG1 Part 31
- Voltage Withstand Capability of 2000 V in 0.1 μs
- Large Thermal Margins for Extended Life & Reliability
- Phase Paper & Coil Bracing on Both Ends
- Class H Rated Magnet Wire & Varnish
- Class H Rated Insulation Materials on 449T Frames & Larger



Testing

- 100% No-Load Commercial Test & Vibration Test on All Motors
- Commercial Test Report with Vibration Data Supplied with All Motors

