

**BALDOR® • RELIANCE** 

**Product Information Packet**

**ERM3111**

**.75HP,3450RPM,3PH,60HZ,56,3416M,OPEN,F1**

| Part Detail |        |             |            |             |        |               |            |
|-------------|--------|-------------|------------|-------------|--------|---------------|------------|
| Revision:   | C      | Status:     | PRD/A      | Change #:   |        | Proprietary:  | No         |
| Type:       | AC     | Elec. Spec: | 34WGW719   | CD Diagram: | CD0005 | Mfg Plant:    |            |
| Mech. Spec: | 34K019 | Layout:     | 34LYK019   | Poles:      | 02     | Created Date: | 09-30-2014 |
| Base:       | RS     | Eff. Date:  | 10-12-2019 | Leads:      | 9#18   |               |            |

| Specs                           |                         |                                |                    |
|---------------------------------|-------------------------|--------------------------------|--------------------|
| Catalog Number:                 | ERM3111                 | Insulation Class:              | B                  |
| Enclosure:                      | OPEN                    | Inverter Code:                 | Not Inverter       |
| Frame:                          | 56                      | KVA Code:                      | L                  |
| Frame Material:                 | Steel                   | Lifting Lugs:                  | No Lifting Lugs    |
| Output @ Frequency:             | .750 HP @ 60 HZ         | Locked Bearing Indicator:      | No Locked Bearing  |
| Synchronous Speed @ Frequency:  | 3600 RPM @ 60 HZ        | Motor Lead Quantity/Wire Size: | 9 @ 18 AWG         |
| Voltage @ Frequency:            | 460.0 V @ 60 HZ         | Motor Lead Exit:               | Terminal Panel     |
|                                 | 230.0 V @ 60 HZ         | Motor Lead Termination:        | Flying Leads       |
| XP Class and Group:             | None                    | Motor Type:                    | 3416M              |
| XP Division:                    | Not Applicable          | Mounting Arrangement:          | F1                 |
| Agency Approvals:               | CSA                     | Power Factor:                  | 80                 |
|                                 | UR                      | Product Family:                | General Purpose    |
| Auxillary Box:                  | No Auxillary Box        | Pulley End Bearing Type:       | Ball               |
| Auxillary Box Lead Termination: | None                    | Pulley Face Code:              | Resilient Mount    |
| Base Indicator:                 | Resilient               | Pulley Shaft Indicator:        | Standard           |
| Bearing Grease Type:            | Polyrex EM (-20F +300F) | Rodent Screen:                 | None               |
| Blower:                         | None                    | Shaft Extension Location:      | Pulley End         |
| Current @ Voltage:              | 1.200 A @ 460.0 V       | Shaft Ground Indicator:        | No Shaft Grounding |

|                                       |                           |                                    |                     |
|---------------------------------------|---------------------------|------------------------------------|---------------------|
|                                       | 2.400 A @ 230.0 V         | <b>Shaft Rotation:</b>             | Reversible          |
|                                       | 2.700 A @ 208.0 V         | <b>Shaft Slinger Indicator:</b>    | No Slinger          |
| <b>Design Code:</b>                   | B                         | <b>Speed Code:</b>                 | Single Speed        |
| <b>Drip Cover:</b>                    | No Drip Cover             | <b>Motor Standards:</b>            | NEMA                |
| <b>Duty Rating:</b>                   | CONT                      | <b>Starting Method:</b>            | Direct on line      |
| <b>Electrically Isolated Bearing:</b> | Not Electrically Isolated | <b>Thermal Device - Bearing:</b>   | None                |
| <b>Feedback Device:</b>               | NO FEEDBACK               | <b>Thermal Device - Winding:</b>   | None                |
| <b>Front Face Code:</b>               | Resilient Mount           | <b>Vibration Sensor Indicator:</b> | No Vibration Sensor |
| <b>Front Shaft Indicator:</b>         | None                      | <b>Winding Thermal 1:</b>          | None                |
| <b>Heater Indicator:</b>              | No Heater                 | <b>Winding Thermal 2:</b>          | None                |

| Nameplate NP1256L |              |  |  |  |  |      |      |                |       |   |
|-------------------|--------------|--|--|--|--|------|------|----------------|-------|---|
| CAT.NO.           | ERM3111      |  |  |  |  |      |      |                |       |   |
| SPEC.             | 34K019W719G2 |  |  |  |  |      |      |                |       |   |
| HP                | .75          |  |  |  |  |      |      |                |       |   |
| VOLTS             | 230/460      |  |  |  |  |      |      |                |       |   |
| AMP               | 2.4/1.2      |  |  |  |  |      |      |                |       |   |
| RPM               | 3450         |  |  |  |  |      |      |                |       |   |
| FRAME             | 56           |  |  |  |  | HZ   | 60   |                | PH    | 3 |
| SER.F.            | 1.25         |  |  |  |  | CODE | L    |                | DES   | B |
| NEMA-NOM-EFF      | 76.8         |  |  |  |  | PF   | 80   |                | CLASS | B |
| RATING            | 40C AMB-CONT |  |  |  |  |      |      |                |       |   |
| CC                |              |  |  |  |  |      |      | USABLE AT 208V | 2.7   |   |
| DE                | 6203         |  |  |  |  | ODE  | 6203 |                |       |   |
| ENCL              | OPEN         |  |  |  |  | SN   |      |                |       |   |
|                   | SFA 2.8/1.4  |  |  |  |  |      |      |                |       |   |

| Parts List    |                                          |          |
|---------------|------------------------------------------|----------|
| Part Number   | Description                              | Quantity |
| SA288635      | SA 34K019W719G2                          | 1.000 EA |
| RA274823      | RA 34K019W719G2                          | 1.000 EA |
| SP1000A09     | TERM BOARD, MODEL 34 SW, (RPL SP1000A01) | 1.000 EA |
| 34CB4501SP    | TERMINAL BOX LID, STAMPED X (PLATED)     | 1.000 EA |
| 51XW0832A07   | 8-32 X .44, TAPTITE II, HEX WSHR SLTD SE | 2.000 EA |
| 51XW0832A07   | 8-32 X .44, TAPTITE II, HEX WSHR SLTD SE | 2.000 EA |
| LD5000A52     | LEAD ASSY W/INTERNAL STAR RING TERMINALS | 1.000 EA |
| 11XT1032A06   | 10-32 X 3/8 HX WSHR HD SLTD TYPE 23      | 2.000 EA |
| 34EP3202A01   | FR ENDPLATE, MACH                        | 1.000 EA |
| RM1000A03     | CUSHION RING, MDL 17-33-34               | 1.000 EA |
| RM1000A03     | CUSHION RING, MDL 17-33-34               | 1.000 EA |
| HA6004A01A    | CLAMP CUSHION RING ASSY                  | 2.000 EA |
| WD4100A01     | DP-875 HEYCO PLUG OR 62MP0875 MICRO PLAS | 1.000 EA |
| 51XW0832G07   | 8-32 X 7/16 TY23 HXWS SLDSR GR           | 1.000 EA |
| HW5100A03     | WAVY WASHER (W1543-017)                  | 1.000 EA |
| 34EP3203A01   | PU ENDPLATE, MACH                        | 1.000 EA |
| XY1032A02     | 10-32 HEX NUT DIRECTIONAL SERRATION      | 4.000 EA |
| HW2501D13     | KEY, 3/16 SQ X 1.375                     | 1.000 EA |
| HA7000A04     | KEY RETAINER 0.625 DIA SHAFTS            | 1.000 EA |
| MG1000G27     | MED CHARCOAL METALLIC GREY 400-0096      | 0.014 GA |
| 85XU0407S04   | 4X1/4 U DRIVE PIN STAINLESS              | 2.000 EA |
| 34BA4003A01SP | RESILIENT BASE, (LENGTH 8.22")           | 1.000 EA |
| HA3100A12     | THRUBOLT 10-32 X 7.375                   | 4.000 EA |
| MN416A01      | TAG-INSTAL-MAINT no wire (2100/bx) 4/22  | 1.000 EA |

| <b>Parts List (continued)</b> |                                         |                 |
|-------------------------------|-----------------------------------------|-----------------|
| <b>Part Number</b>            | <b>Description</b>                      | <b>Quantity</b> |
| LB1119N                       | WARNING LABEL                           | 1.000 EA        |
| LC0005                        | CONN.DIA.,TY M,9-LD,DUAL VOLT,REVERSING | 1.000 EA        |
| NP1256L                       | ALUM UL CSA CC INDUSTRIAL MOTOR A60     | 1.000 EA        |
| 35PA1066                      | PKG GRP, PRINT PK1001A01                | 1.000 EA        |

**AC Induction Motor Performance Data**

Record # 47456

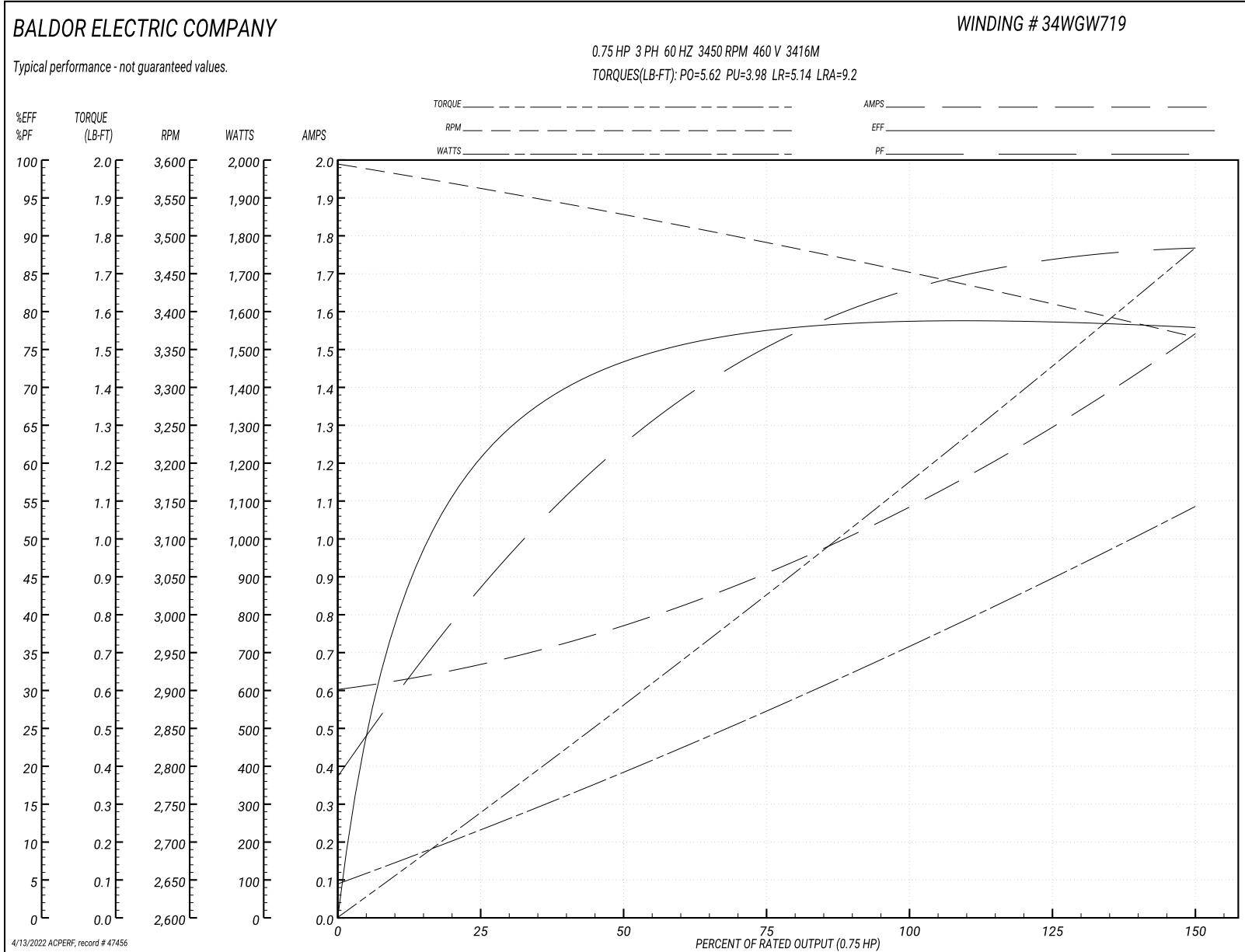
Typical performance - not guaranteed values

| <b>Winding:</b> 34WGW719-R010 |              | <b>Type:</b> 3416M               |                                                  | <b>Enclosure:</b> OPEN |  |
|-------------------------------|--------------|----------------------------------|--------------------------------------------------|------------------------|--|
| <b>Nameplate Data</b>         |              |                                  | <b>460 V, 60 Hz:<br/>High Voltage Connection</b> |                        |  |
| <b>Rated Output (HP)</b>      | .75          | <b>Full Load Torque</b>          | 1.15 LB-FT                                       |                        |  |
| <b>Volts</b>                  | 230/460      | <b>Start Configuration</b>       | direct on line                                   |                        |  |
| <b>Full Load Amps</b>         | 2.4/1.2      | <b>Breakdown Torque</b>          | 5.62 LB-FT                                       |                        |  |
| <b>R.P.M.</b>                 | 3450         | <b>Pull-up Torque</b>            | 3.98 LB-FT                                       |                        |  |
| <b>Hz</b>                     | 60 Phase     | <b>Locked-rotor Torque</b>       | 5.14 LB-FT                                       |                        |  |
| <b>NEMA Design Code</b>       | B            | <b>Starting Current</b>          | 9.2 A                                            |                        |  |
| <b>Service Factor (S.F.)</b>  | 1.25         | <b>No-load Current</b>           | 0.611 A                                          |                        |  |
| <b>NEMA Nom. Eff.</b>         | 76.8         | <b>Line-line Res. @ 25°C</b>     | 20.283 Ω                                         |                        |  |
| <b>Rating - Duty</b>          | 40C AMB-CONT | <b>Temp. Rise @ Rated Load</b>   | 17°C                                             |                        |  |
| <b>S.F. Amps</b>              | 2.8/1.4      | <b>Temp. Rise @ S.F. Load</b>    | 21°C                                             |                        |  |
|                               |              | <b>Locked-rotor Power Factor</b> | 69                                               |                        |  |
|                               |              | <b>Rotor inertia</b>             | 0.0148 LB-FT <sup>2</sup>                        |                        |  |

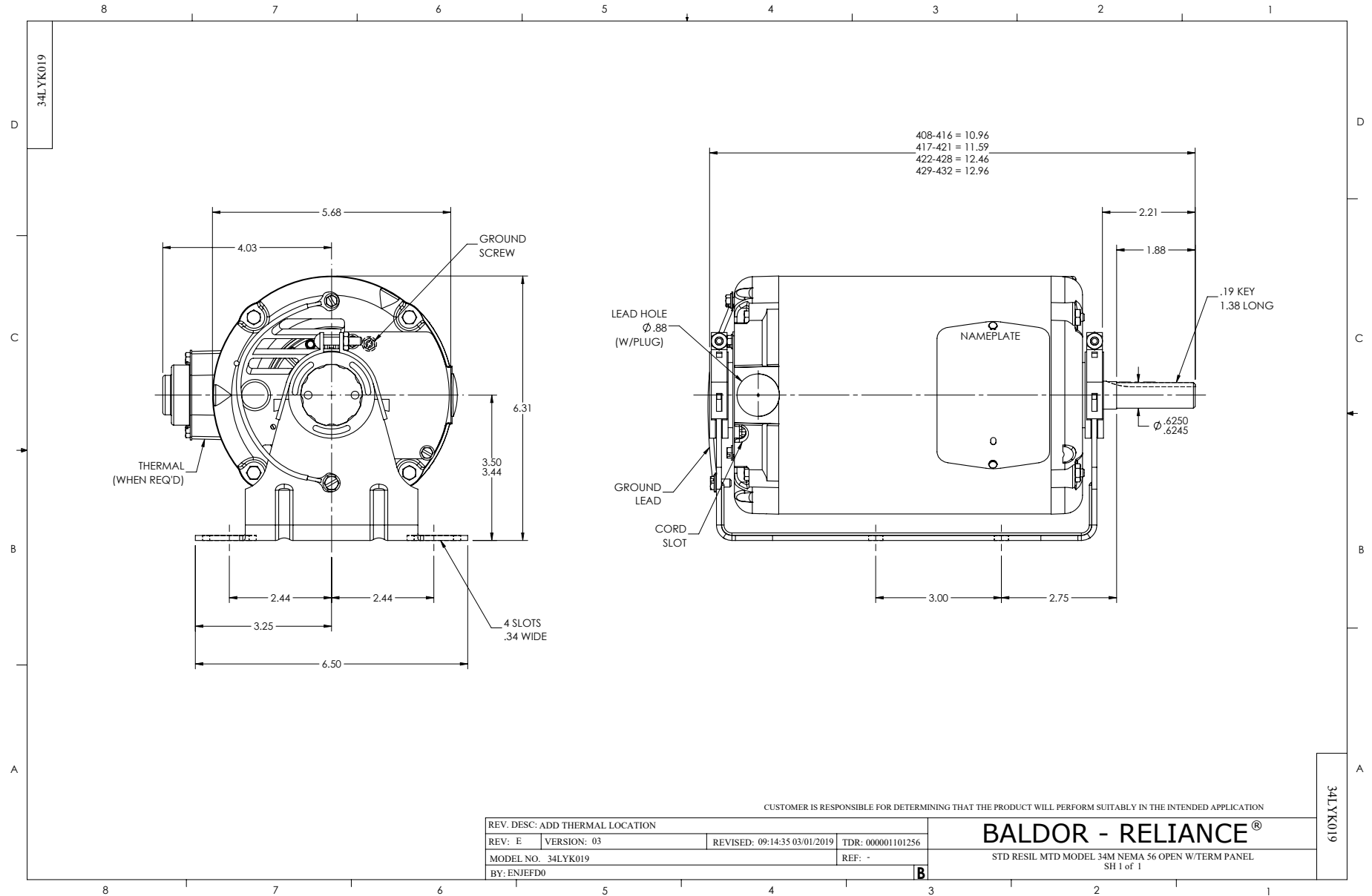
**Load Characteristics 460 V, 60 Hz, 0.75 HP**

| <b>% of Rated Load</b> | <b>25</b> | <b>50</b> | <b>75</b> | <b>100</b> | <b>125</b> | <b>150</b> | <b>S.F.</b> |
|------------------------|-----------|-----------|-----------|------------|------------|------------|-------------|
| <b>Power Factor</b>    | 45        | 64        | 75        | 82         | 87         | 89         | 87          |
| <b>Efficiency</b>      | 60.9      | 73.6      | 77.6      | 78.8       | 78.8       | 77.7       | 78.8        |
| <b>Speed</b>           | 3558.7    | 3525.3    | 3490.1    | 3452.4     | 3410.2     | 3364.3     | 3410        |
| <b>Line amperes</b>    | 0.661     | 0.769     | 0.92      | 1.1        | 1.3        | 1.54       | 1.3         |

Performance Graph at 460V, 60Hz, 0.75HP Typical performance - Not guaranteed values







CD0005



LOW VOLTAGE  
(2Y)



LINE

HIGH VOLTAGE  
(1Y)



LINE

NOTES:

1. INTERCHANGE ANY TWO LINE LEADS TO REVERSE ROTATION.
2. OPTIONAL THERMOSTATS ARE PROVIDED WHEN SPECIFIED.
3. ACTUAL NUMBER OF INTERNAL PARALLEL CIRCUITS MAY BE A MULTIPLE OF THOSE SHOWN ABOVE.
4. LEAD COLORS ARE OPTIONAL. LEADS MUST ALWAYS BE NUMBERED AS SHOWN.

|                                           |         |                         |              |
|-------------------------------------------|---------|-------------------------|--------------|
| REV. DESC: REVISE TO SHOW OPTIONAL COLORS |         |                         |              |
| REV. LTR: E                               | BY: JLP | REVISED: 01/19/99 10:15 | TDR: 0171435 |
| 900000                                    |         | FILE: AAA00005140       | MDL: -       |
|                                           |         | MTL: -                  |              |

**BALDOR ELECTRIC Co.**

3PH, DV, 9 LEADS

CD0005