

BALDOR[®] • RELIANCE 

Product Information Packet

ERM3112

.75HP,1730RPM,3PH,60HZ,56H,3516M,OPEN,F1

Part Detail							
Revision:	G	Status:	PRD/A	Change #:		Proprietary:	No
Type:	AC	Elec. Spec:	35WGN725	CD Diagram:	CD0005	Mfg Plant:	
Mech. Spec:	35E411	Layout:	35LYE411	Poles:	04	Created Date:	01-06-2015
Base:	RS	Eff. Date:	11-27-2018	Leads:	9#18		

Specs			
Catalog Number:	ERM3112	Insulation Class:	F
Enclosure:	OPEN	Inverter Code:	Not Inverter
Frame:	56H	KVA Code:	J
Frame Material:	Steel	Lifting Lugs:	No Lifting Lugs
Output @ Frequency:	.750 HP @ 60 HZ	Locked Bearing Indicator:	No Locked Bearing
Synchronous Speed @ Frequency:	1800 RPM @ 60 HZ	Motor Lead Quantity/Wire Size:	9 @ 18 AWG
Voltage @ Frequency:	208.0 V @ 60 HZ	Motor Lead Exit:	Terminal Panel
	230.0 V @ 60 HZ	Motor Lead Termination:	Flying Leads
	460.0 V @ 60 HZ	Motor Type:	3516M
XP Class and Group:	None	Mounting Arrangement:	F1
XP Division:	Not Applicable	Power Factor:	84
Agency Approvals:	C UR US ENERGY	Product Family:	General Purpose
Auxillary Box:	No Auxillary Box	Pulley End Bearing Type:	Ball
Auxillary Box Lead Termination:	None	Pulley Face Code:	Resilient Mount
Base Indicator:	Resilient	Pulley Shaft Indicator:	Standard
Bearing Grease Type:	Polyrex EM (-20F +300F)	Rodent Screen:	None
Blower:	None	Shaft Extension Location:	Pulley End
Current @ Voltage:	1.000 A @ 460.0 V	Shaft Ground Indicator:	No Shaft Grounding

	2.000 A @ 230.0 V	Shaft Rotation:	Reversible
	2.100 A @ 208.0 V	Shaft Slinger Indicator:	No Slinger
Design Code:	B	Speed Code:	Single Speed
Drip Cover:	No Drip Cover	Motor Standards:	NEMA
Duty Rating:	CONT	Starting Method:	Direct on line
Electrically Isolated Bearing:	Not Electrically Isolated	Thermal Device - Bearing:	None
Feedback Device:	NO FEEDBACK	Thermal Device - Winding:	None
Front Face Code:	Terminal Panel	Vibration Sensor Indicator:	No Vibration Sensor
Front Shaft Indicator:	None	Winding Thermal 1:	None
Heater Indicator:	No Heater	Winding Thermal 2:	None

Nameplate NP3155L												
CAT.NO.	ERM3112											
SPEC.	35E411N725G1											
HP	.75											
VOLTS	208-230/460											
AMP	2.1-2/1											
RPM	1730											
FRAME	56H					HZ	60			PH	3	
SER.F.	1.25					CODE	J		DES	B	CL	F
F.L. AVG. EFF.	81.1					PF	84					
RATING	40C AMB-CONT											
CC										USABLE AT 208V		
DE	6203					ODE	6203					
ENCL	OPEN					SN						
	SFA 2.6-2.4/1.2											

Parts List		
Part Number	Description	Quantity
SA291853	SA 35E411N725G1	1.000 EA
RA277972	RA 35E411N725G1	1.000 EA
11XW0832G06	#8-32 X 3/8, TAPTITE II, HEX WSHR SLTD	1.000 EA
LD5000A01	LEAD ASSY, ML1400DF14 7" RING TRM EA END	1.000 EA
51XW1032A06	10-32 X .38, TAPTITE II, HEX WSHR SLTD S	2.000 EA
HW1003A10	WASHER, #10 EX TH LK, ZN X	2.000 EA
35EP3202A01	STD OPEN FR EP - RESILIENT MTD	1.000 EA
RM1000A02	CUSHION RING, MODEL 35 SAME AS A07	1.000 EA
HA6005A01	CLAMP, BASE	2.000 EA
51XN1032A20	10-32 X 1 1/4 HX WS SL SR	1.000 EA
51XN1032A20	10-32 X 1 1/4 HX WS SL SR	1.000 EA
XY1032A02	10-32 HEX NUT DIRECTIONAL SERRATION	1.000 EA
51XW0832A07	8-32 X .44, TAPTITE II, HEX WSHR SLTD SE	3.000 EA
HW5100A03	WAVY WASHER (W1543-017)	1.000 EA
35EP3203A01	STD PU EP, OPEN RESIL MTG	1.000 EA
XY1032A02	10-32 HEX NUT DIRECTIONAL SERRATION	4.000 EA
RM1000A02	CUSHION RING, MODEL 35 SAME AS A07	1.000 EA
HA6005A01	CLAMP, BASE	2.000 EA
XY1032A02	10-32 HEX NUT DIRECTIONAL SERRATION	1.000 EA
35CB4500SP	TERMINAL BOX LID STAMPED	1.000 EA
51XW0832A07	8-32 X .44, TAPTITE II, HEX WSHR SLTD SE	2.000 EA
HW2501D13	KEY, 3/16 SQ X 1.375	1.000 EA
HA7000A04	KEY RETAINER 0.625 DIA SHAFTS	1.000 EA
85XU0407S04	4X1/4 U DRIVE PIN STAINLESS	2.000 EA

Parts List (continued)		
Part Number	Description	Quantity
SP1003A01	TERM. BOARD, MODE 35 SW X H-23655	1.000 EA
MJ1000A02	GREASE, MOBIL POLYREX EM - 124047	0.050 LB
35BA4002A01	RESILIENT BASE, STAMPED	1.000 EA
MG1000Y03	MUNSELL 2.53Y 6.70/ 4.60, GLOSS 20,	0.017 GA
HA3100A28	THRUBOLT 10-32 X 8.187	4.000 EA
LC0005E01	CONN.DIA./WARNING LABEL (LC0005/LB1119N)	1.000 EA
MN416A01	TAG-INSTAL-MAINT no wire (2100/bx) 4/22	1.000 EA
NP3155L	ALUM SUPER-E UL CSA CC "SEMS"	1.000 EA
35PA1066	PKG GRP, PRINT PK1008A06	1.000 EA

AC Induction Motor Performance Data

Record # 47474

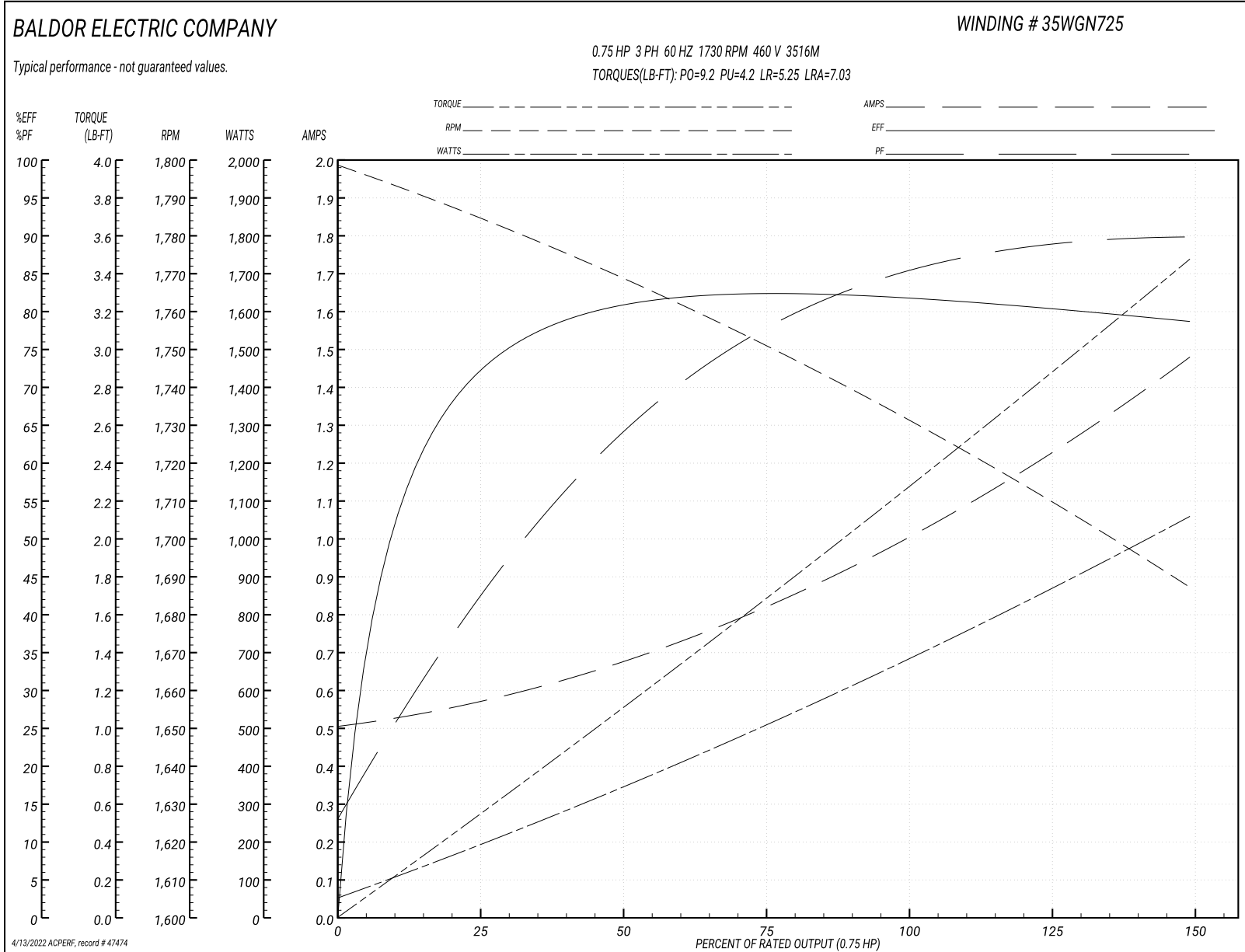
Typical performance - not guaranteed values

Winding: 35WGN725-R001			Type: 3516M	Enclosure: OPEN		
Nameplate Data			460 V, 60 Hz: High Voltage Connection			
Rated Output (HP)	.75		Full Load Torque	2.26 LB-FT		
Volts	230/460		Start Configuration	direct on line		
Full Load Amps	2/1		Breakdown Torque	9.2 LB-FT		
R.P.M.	1730		Pull-up Torque	4.2 LB-FT		
Hz	60	Phase	3	Locked-rotor Torque	5.25 LB-FT	
NEMA Design Code	B		KVA Code	J	Starting Current	7.03 A
Service Factor (S.F.)	1.25		No-load Current	0.51 A		
NEMA Nom. Eff.	81.1	Power Factor	84	Line-line Res. @ 25°C	32.1 Ω	
Rating - Duty	40C AMB-CONT		Temp. Rise @ Rated Load	20°C		
S.F. Amps	2.4/1.2		Temp. Rise @ S.F. Load	27°C		
			Locked-rotor Power Factor	66.3		
			Rotor inertia	0.0946 LB-FT ²		

Load Characteristics 460 V, 60 Hz, 0.75 HP

% of Rated Load	25	50	75	100	125	150	S.F.
Power Factor	44	66	77	84	89	90	89
Efficiency	71.8	80.6	82.3	82	80.8	78.6	80.8
Speed	1784	1768	1752	1732	1711	1687	1711
Line amperes	0.569	0.668	0.822	1.01	1.21	1.48	1.21

Performance Graph at 460V, 60Hz, 0.75HP Typical performance - Not guaranteed values



AC Induction Motor Performance Data

Record # 49391

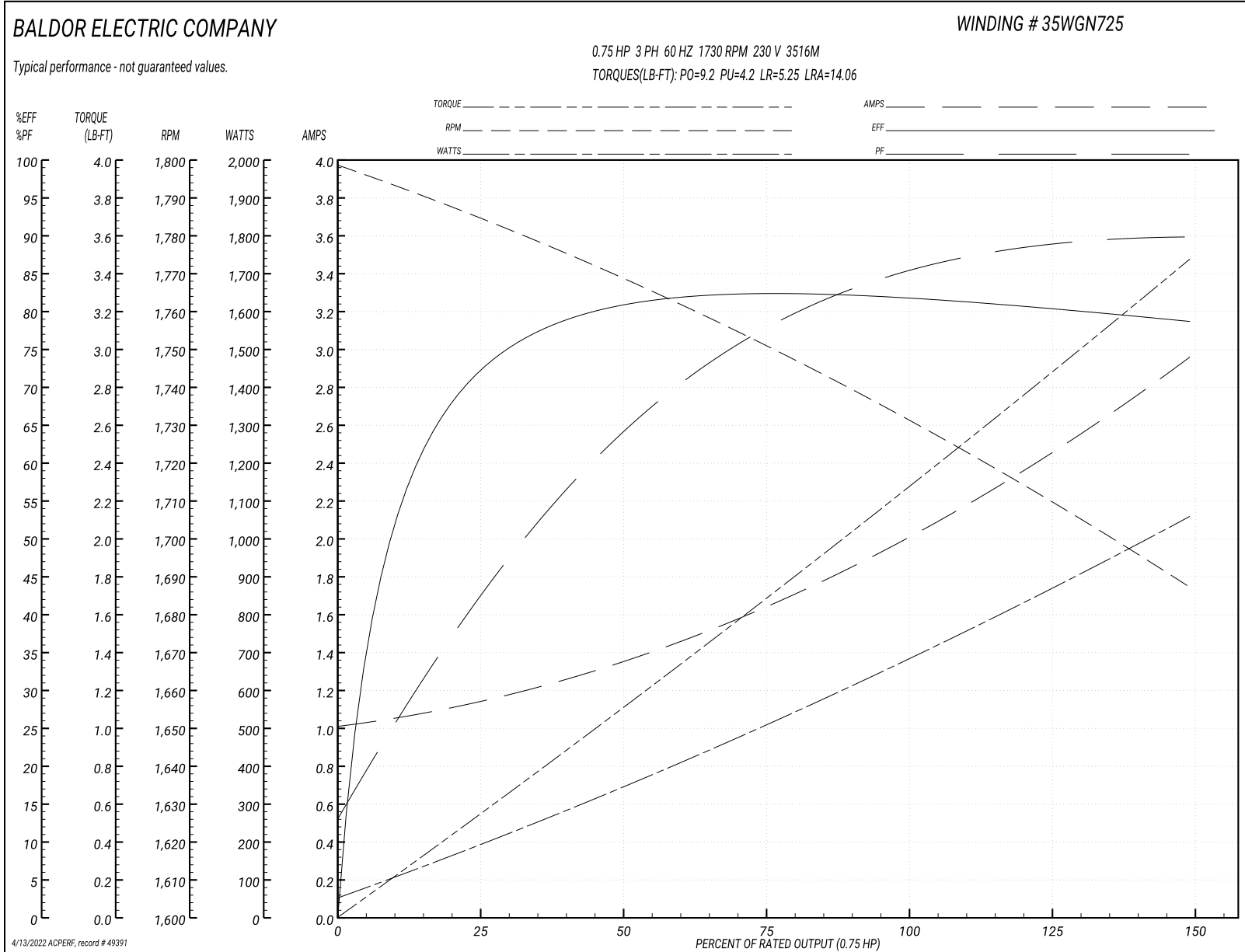
Typical performance - not guaranteed values

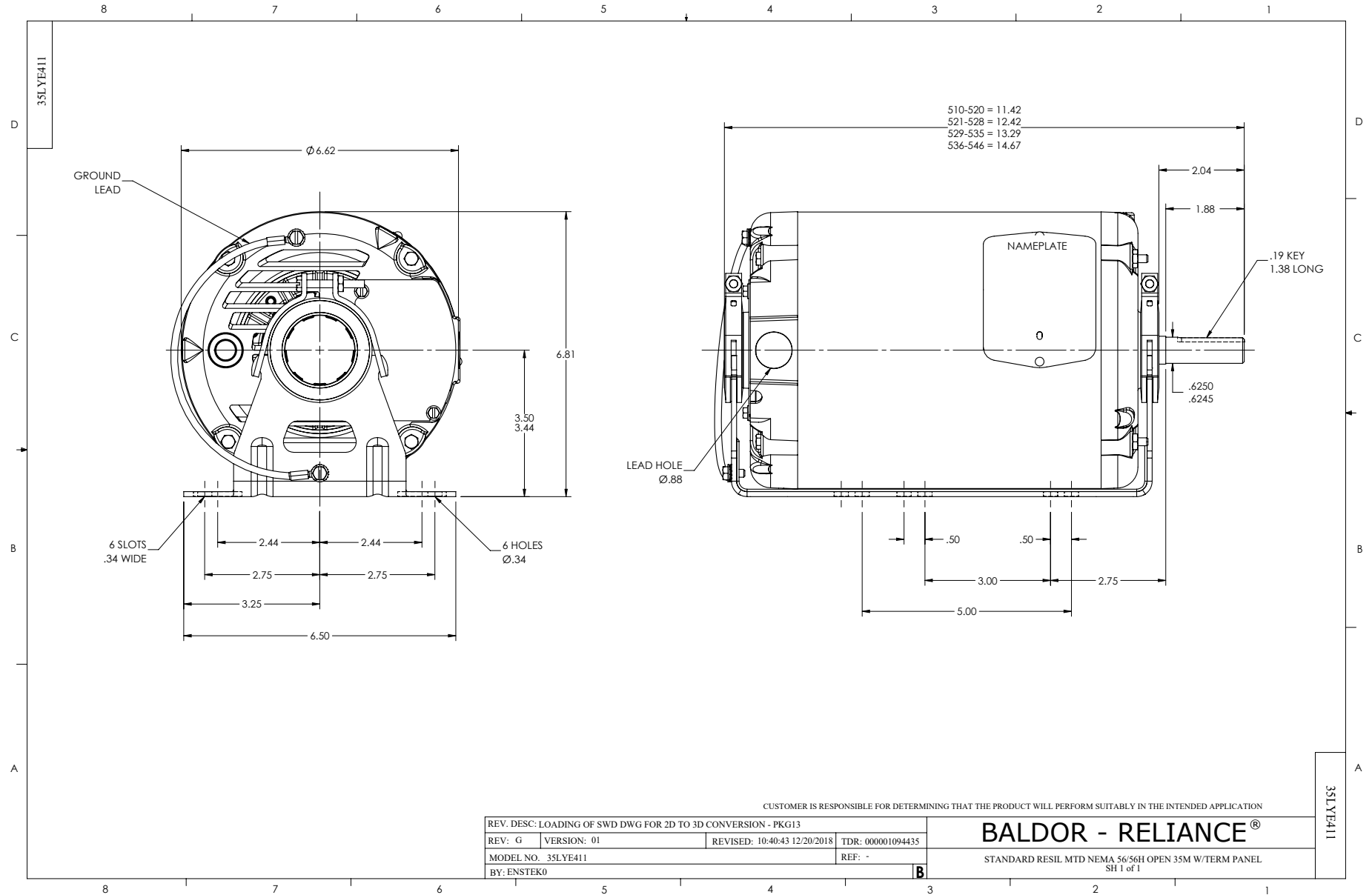
Winding: 35WGN725-R001			Type: 3516M	Enclosure: OPEN		
Nameplate Data			230 V, 60 Hz: High Voltage Connection			
Rated Output (HP)	.75		Full Load Torque	2.26 LB-FT		
Volts	230/460		Start Configuration	direct on line		
Full Load Amps	2/1		Breakdown Torque	9.2 LB-FT		
R.P.M.	1730		Pull-up Torque	4.2 LB-FT		
Hz	60	Phase	3	Locked-rotor Torque	5.25 LB-FT	
NEMA Design Code	B		KVA Code	J	Starting Current	14.06 A
Service Factor (S.F.)	1.25		No-load Current	1.02 A		
NEMA Nom. Eff.	81.1	Power Factor	84	Line-line Res. @ 25°C	8.025 Ω	
Rating - Duty	40C		AMB-CONT	Temp. Rise @ Rated Load	20°C	
S.F. Amps	2.4/1.2		Temp. Rise @ S.F. Load	27°C		
				Locked-rotor Power Factor	66.3	
				Rotor inertia	0.0946 LB-FT ²	

Load Characteristics 230 V, 60 Hz, 0.75 HP

% of Rated Load	25	50	75	100	125	150	S.F.
Power Factor	44	66	77	84	89	90	89
Efficiency	71.8	80.6	82.3	82	80.8	78.6	80.8
Speed	1784	1768	1752	1732	1711	1687	1711
Line amperes	1.138	1.336	1.644	2.02	2.42	2.96	2.42

Performance Graph at 230V, 60Hz, 0.75HP Typical performance - Not guaranteed values

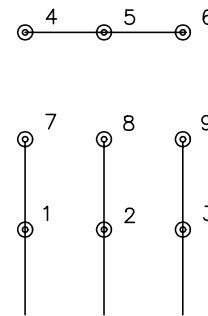




CD0005

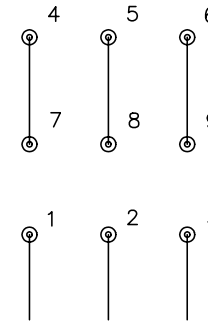


LOW VOLTAGE
(2Y)



LINE

HIGH VOLTAGE
(1Y)



LINE

NOTES:

1. INTERCHANGE ANY TWO LINE LEADS TO REVERSE ROTATION.
2. OPTIONAL THERMOSTATS ARE PROVIDED WHEN SPECIFIED.
3. ACTUAL NUMBER OF INTERNAL PARALLEL CIRCUITS MAY BE A MULTIPLE OF THOSE SHOWN ABOVE.
4. LEAD COLORS ARE OPTIONAL. LEADS MUST ALWAYS BE NUMBERED AS SHOWN.

REV. DESC: REVISE TO SHOW OPTIONAL COLORS			
REV. LTR: E	BY: JLP	REVISED: 01/19/99 10:15	TDR: 0171435
900000		FILE: AAA00005140	MDL: -
		MTL: -	

BALDOR ELECTRIC Co.

3PH, DV, 9 LEADS

CD0005