

PRODUCT INFORMATION PACKET

Model No: 056T17D11045

Catalog No: G242A

General Purpose Motor, 0.50 HP, 3 Ph, 60 Hz, 575 V, 1800 RPM, 56C Frame, DP



Regal and are trademarks of Regal Rexnord Corporation or one of its affiliated companies.

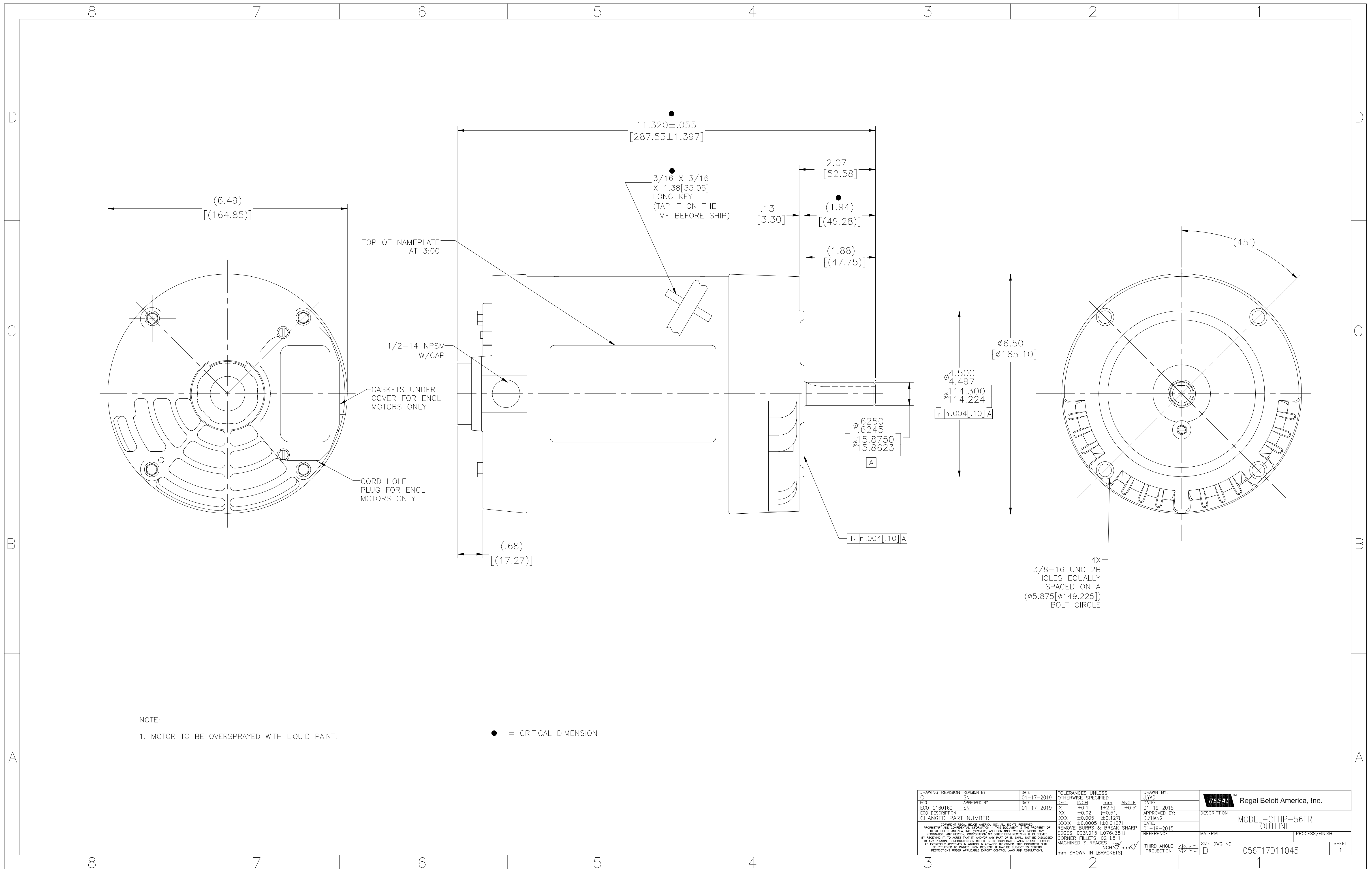
©2022 Regal Rexnord Corporation, All Rights Reserved. MC017097E

Nameplate Specifications

Output HP	0.50 Hp	Output KW	0.37 kW
Frequency	60 Hz	Voltage	575 V
Current	0.70 A	Speed	1725 rpm
Service Factor	1.25	Phase	3
Efficiency	78.2 %	Power Factor	55.5
Duty	Continuous	Insulation Class	B
Design Code	B	KVA Code	K
Frame	56C	Enclosure	Drip Proof
Thermal Protection	No Protection	Ambient Temperature	40 °C
Drive End Bearing Size	6203	Opp Drive End Bearing Size	6203
UL	Recognized	CSA	Y
CE	Y	IP Code	22
Number of Speeds	1		

Technical Specifications

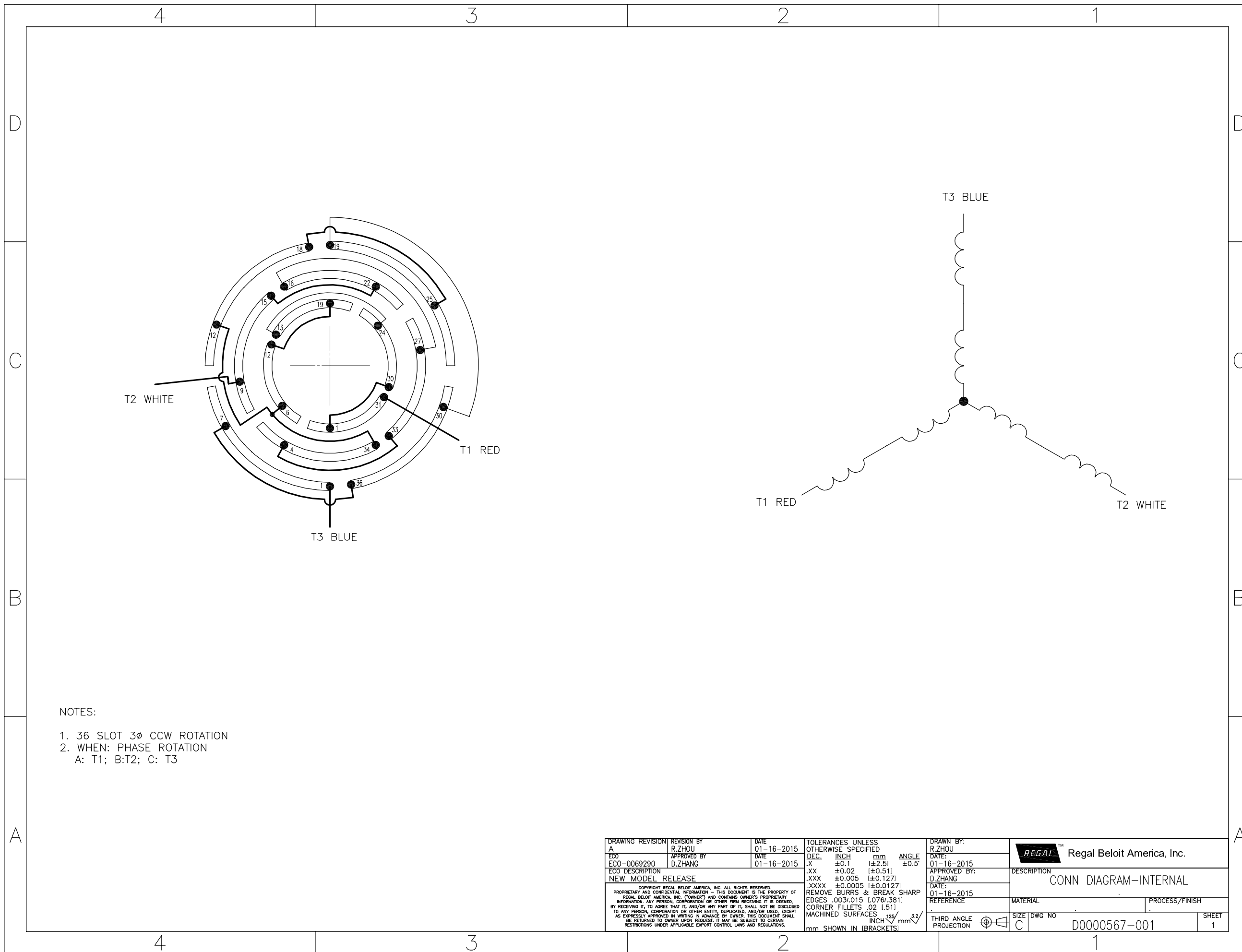
Electrical Type	Squirrel Cage Induction Run	Starting Method	Across The Line
Poles	4	Rotation	Reversible
Resistance Main	0 Ohms	Mounting	Round
Motor Orientation	Horizontal	Drive End Bearing	Ball
Opp Drive End Bearing	Ball	Frame Material	Rolled Steel
Shaft Type	T	Overall Length	11.31 in
Shaft Diameter	0.625 in	Shaft Extension	1.88 in
Assembly/Box Mounting	F1 OUT ODE BRKT RADIAL		
Connection Drawing	D0000567-001	Outline Drawing	056T17D11045



NOTE:
1. MOTOR TO BE OVERSPRAYED WITH LIQUID PAINT.

● = CRITICAL DIMENSION

DRAWING REVISION	REVISION BY	DATE	TOLERANCES UNLESS OTHERWISE SPECIFIED	DRAWN BY:	Regal Beloit America, Inc.
C	SN	01-17-2019	DEC. INCH mm ANGLE	J. YAO	
ECO	DATE	01-17-2019	X ±0.1 ±2.51 ±0.5°	DATE:	01-19-2015
ECO DESCRIPTION	SN		XX ±0.02 ±0.511	APPROVED BY:	D. ZHANG
CHANGED PART NUMBER			XXX ±0.005 ±0.1271	DATE:	01-19-2015
<small>COPYRIGHT REGAL BELOIT AMERICA, INC. ALL RIGHTS RESERVED. PROPRIETARY AND CONFIDENTIAL INFORMATION - THIS DOCUMENT IS THE PROPERTY OF REGAL BELOIT AMERICA, INC. (OWNER) AND CONTAINS OWNER'S PROPRIETARY INFORMATION. ANY FEDERAL, CORPORATE OR OTHER FORM REVISIONS OR REMARKS BY RECEIVING IT TO AGREE THAT IT AND/OR ANY PART OF IT, SHALL NOT BE DISCLOSED TO ANY PERSON, CORPORATION OR OTHER ENTITY, UNLESS SO INDICATED, EXCEPT AS EXPRESSLY APPROVED IN WRITING IN ADVANCE BY OWNER. THIS DOCUMENT SHALL BE RETURNED TO OWNER UPON REQUEST. IT MAY BE SUBJECT TO CERTAIN RESTRICTIONS UNDER APPLICABLE EXPORT CONTROL LAWS AND REGULATIONS.</small>			REMOVE BURRS & BREAK SHARP EDGES .003/.015 [0.076/.381]	REFERENCE	MATERIAL
			CORNER FILLETS .02 [511]	THIRD ANGLE PROJECTION	PROCESS/FINISH
			MACHINED SURFACES: INCH/mm 32/	SIZE DWG NO	SHEET
			mm SHOWN IN [BRACKETS]	D	056T17D11045 1



- NOTES:
1. 36 SLOT 3Ø CCW ROTATION
 2. WHEN: PHASE ROTATION
A: T1; B:T2; C: T3

DRAWING REVISION A	REVISION BY R.ZHOU	DATE 01-16-2015	TOLERANCES UNLESS OTHERWISE SPECIFIED	DRAWN BY: R.ZHOU	Regal Beloit America, Inc.
ECO ECO-0069290	APPROVED BY D.ZHANG	DATE 01-16-2015	DEC. INCH mm ANGLE .X ±0.1 [±2.5] ±0.5° .XX ±0.02 [±0.51] .XXX ±0.005 [±0.127] .XXXX ±0.0005 [±0.0127]	DATE: 01-16-2015	
ECO DESCRIPTION NEW MODEL RELEASE			REMOVE BURRS & BREAK SHARP EDGES .003/.015 [0.076/3.81]	APPROVED BY: D.ZHANG	DESCRIPTION CONN DIAGRAM-INTERNAL
<small>COPYRIGHT REGAL BELOIT AMERICA, INC. ALL RIGHTS RESERVED. PROPRIETARY AND CONFIDENTIAL INFORMATION - THIS DOCUMENT IS THE PROPERTY OF REGAL BELOIT AMERICA, INC. (OWNER) AND CONTAINS OWNER'S PROPRIETARY INFORMATION. ANY PERSON, CORPORATION OR OTHER FIRM RECEIVING IT IS DEEMED, BY RECEIVING IT, TO AGREE THAT IT, AND/OR ANY PART OF IT, SHALL NOT BE DISCLOSED TO ANY PERSON, CORPORATION OR OTHER ENTITY, EXPLICATED, AND/OR USED, EXCEPT AS EXPRESSLY APPROVED IN WRITING IN ADVANCE BY OWNER. THIS DOCUMENT SHALL BE RETURNED TO OWNER UPON REQUEST. IT MAY BE SUBJECT TO CERTAIN RESTRICTIONS UNDER APPLICABLE EXPORT CONTROL LAWS AND REGULATIONS.</small>			CORNER FILLETS .02 [1.51]	DATE: 01-16-2015	MATERIAL
			MACHINED SURFACES $\sqrt{.25}$ INCH $\sqrt{.25}$ mm $\sqrt{.25}$ mm SHOWN IN [BRACKETS]	REFERENCE	PROCESS/FINISH
				THIRD ANGLE PROJECTION	SIZE DWG NO C D0000567-001
					SHEET 1



MARATHON ELECTRIC CORPORATION
TYPICAL PERFORMANCE CURVE for AC MOTOR

Customer

Curve at

575

Volts

HP 0.50

PHASE 3

Model No 56T17D11045

60

HZ

VOLTS 575

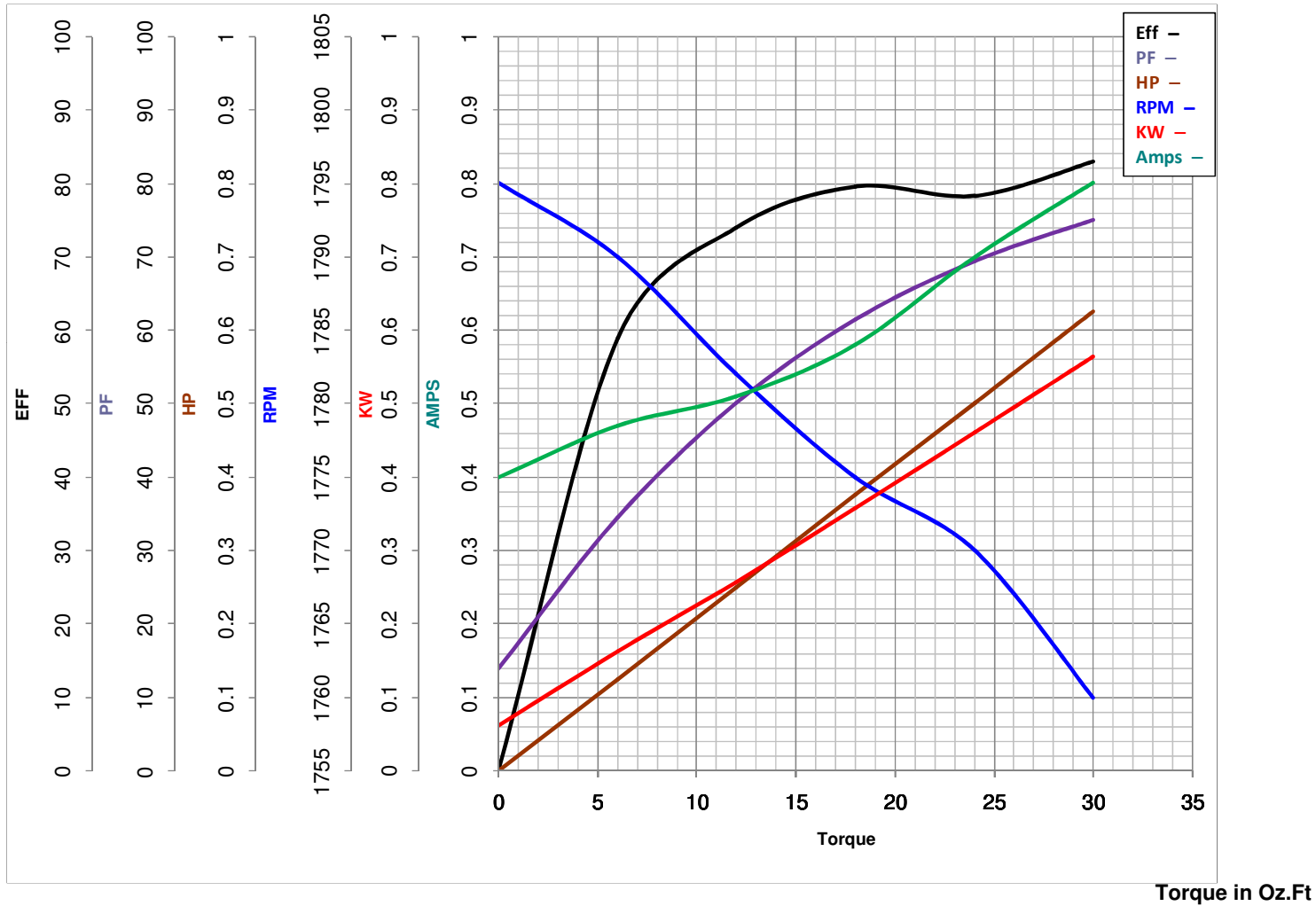
Catalog No G242A

0.5

HP

HZ 60

RPM 1725



FL TORQUE	<u>24</u>	Oz.Ft	FL AMPS	<u>0.7</u>	
BD TORQUE	<u>123.0</u>	Oz.Ft	PU TORQUE	<u>84.2</u>	Oz.Ft
LR TORQUE	<u>87</u>	Oz.Ft	LR AMPS	<u>5.68</u>	
WINDING	SS0069290-		Date	3/5/2019	

EC Declaration of Conformity

The undersigned representing
the manufacturer:

Regal Beloit America
100 East Randolph St.
Wausau, WI 54401

and the authorized representative
established within the Community:

Marathon Electric UK
6F Thistleton Road Ind. Estate
Market Overton
Oakham, Rutland LE15 7PP UK

are committed to providing customers with products that comply with applicable regulations and international protocols to which they are subject, including the requirements of the European Parliament Directive on the Harmonization of the laws relating to electrical equipment designed for use within certain voltage limits (2014/35/EU).

Regal Beloit America declares that the following product(s), to which this declaration relates, are in conformity with the relevant sections of the EC standards listed below.

This statement supersedes any statements previously issued pertaining to the product(s) listed below and is subject to change without notice.

Model No : 056T17D11045

(Model No. may contain prefix and/or suffix characters)

Catalog No : G242A

Rework No : N/A

Directives :

Low Voltage Directive 2014/35/EU

Harmonized Standards Used :

EN 60034-1: 2010 (IEC 60034-1: 2010)

EN 60034-5: 2001/A1:2007 (IEC 60034-5: 2000/A1:2006)

Authorized Representative:



Michael A. Logsdon
Vice President, Technology

Authorized Representative in the Community:



Julian Clark
Marketing Engineer

Created on 09/01/2022

CE 22