

PRODUCT INFORMATION PACKET

Model No: 056T17D11042

Catalog No: G243A

General Purpose Motor, 0.75 HP, 3 Ph, 60 Hz, 575 V, 1800 RPM, 56C Frame, DP



Regal and are trademarks of Regal Rexnord Corporation or one of its affiliated companies.

©2022 Regal Rexnord Corporation, All Rights Reserved. MC017097E

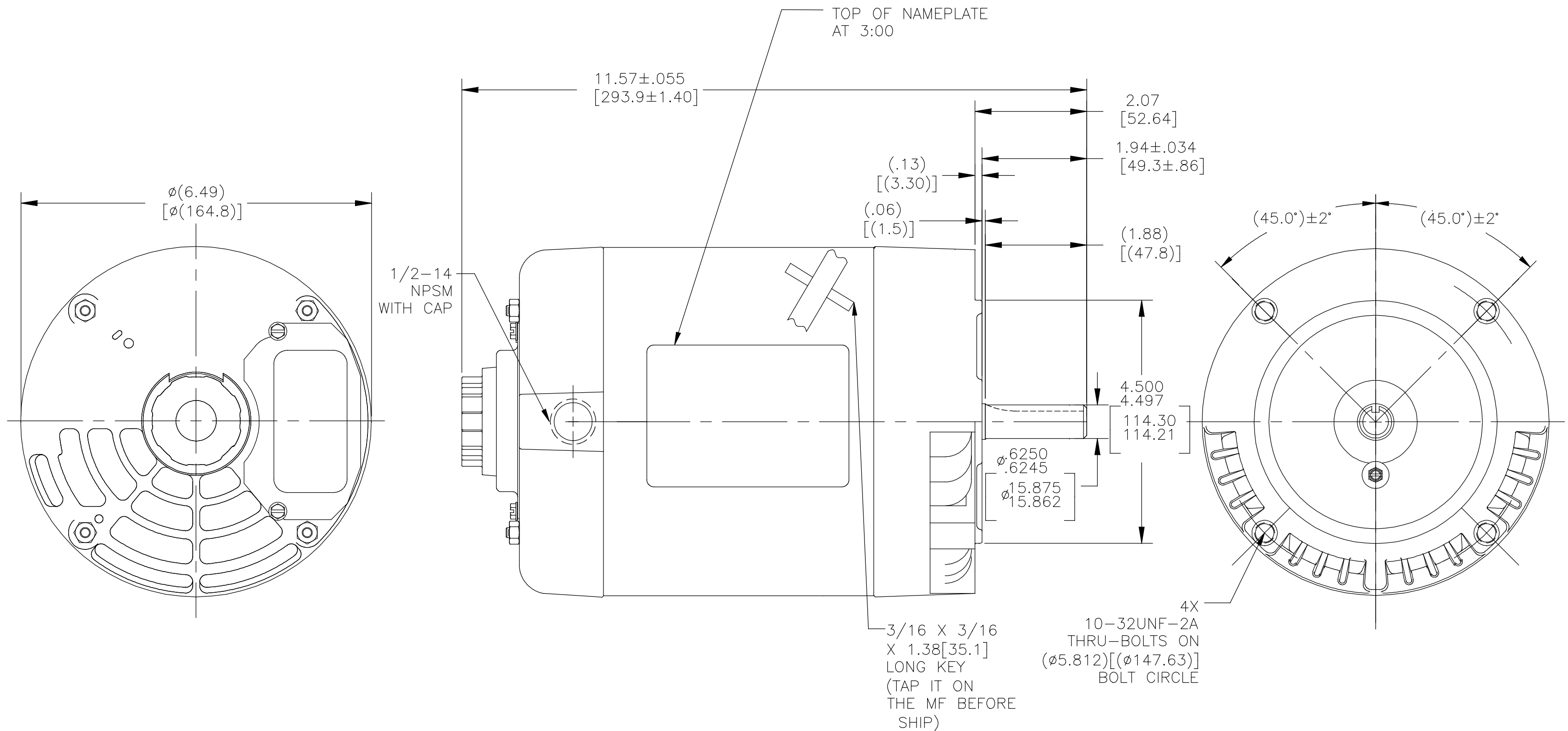
Nameplate Specifications

Output HP	0.75 Hp	Output KW	0.56 kW
Frequency	60 Hz	Voltage	575 V
Current	2.9 A	Speed	1725 rpm
Service Factor	1.25	Phase	3
Efficiency	81.1 %	Power Factor	56.9
Duty	Continuous	Insulation Class	B
Design Code	B	KVA Code	K
Frame	56C	Enclosure	Drip Proof
Thermal Protection	No Protection	Ambient Temperature	40 °C
Drive End Bearing Size	6203	Opp Drive End Bearing Size	6203
UL	Recognized	CSA	Y
CE	Y	IP Code	22
Number of Speeds	1		

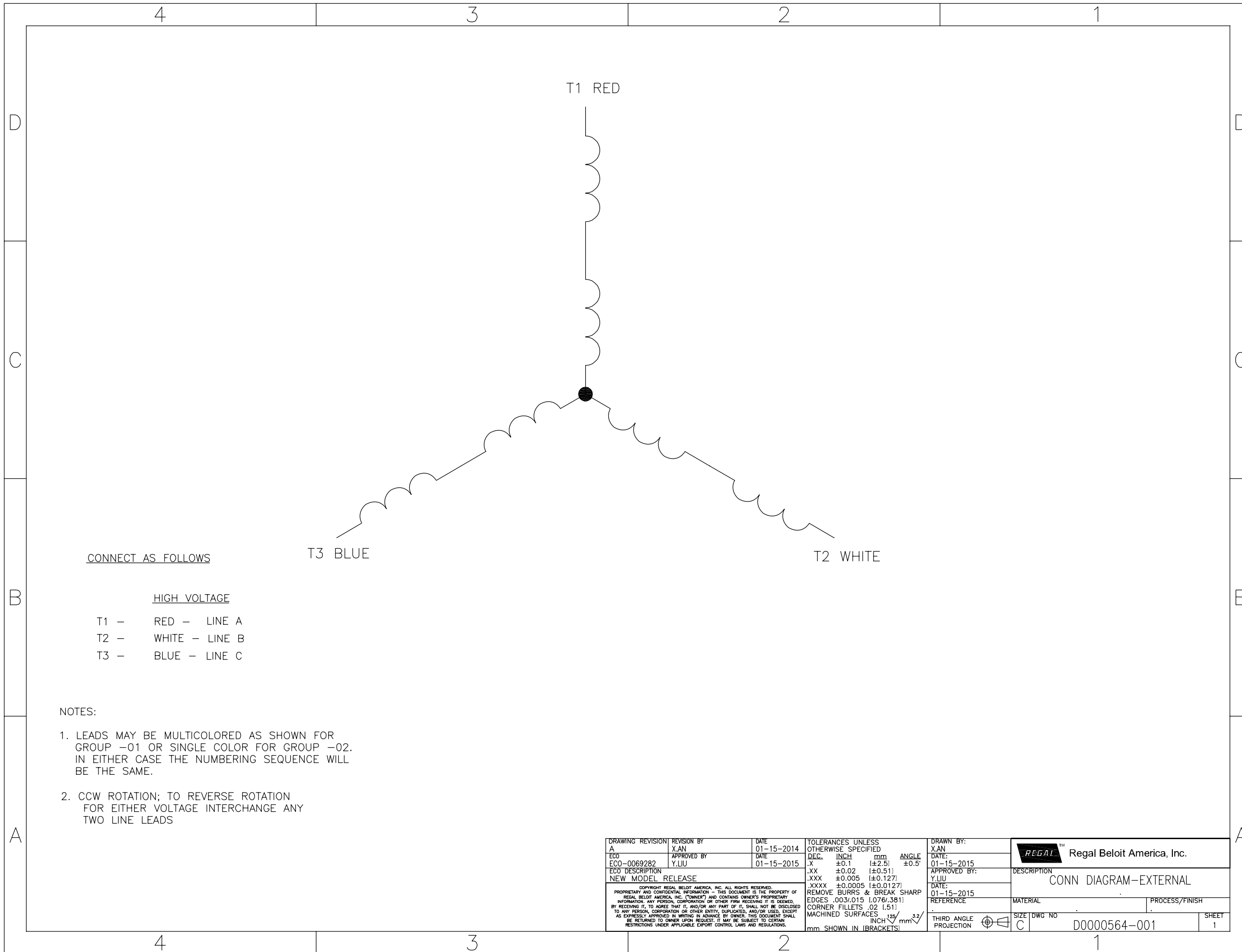
Technical Specifications

Electrical Type	Squirrel Cage Induction Run	Starting Method	Across The Line
Poles	4	Rotation	Reversible
Resistance Main	23 Ohms	Mounting	Round
Motor Orientation	Horizontal	Drive End Bearing	Ball
Opp Drive End Bearing	Ball	Frame Material	Rolled Steel
Shaft Type	T	Overall Length	11.57 in
Frame Length	5.87 in	Shaft Diameter	0.625 in
Shaft Extension	1.88 in	Assembly/Box Mounting	F1 OUT ODE BRKT RADIAL
Outline Drawing	056T17D11042	Connection Drawing	D0000564-001

NOTE:
ALL DIMENSIONS SHOWN IN PARENTHESIS ARE REFERENCE DIMENSIONS.



DRAWING REVISION C	REVISION BY D.SURYAWANSHI	DATE 07/11/2019	TOLERANCES UNLESS OTHERWISE SPECIFIED DEC. INCH mm ANGLE .XX ±0.1 [±2.5] ±0.5° .XX ±0.02 [±0.51] .XXX ±0.005 [±0.127] .XXXX ±0.0005 [±0.0127]	DRAWN BY: Y.LIU	Regal Beloit America, Inc.		
ECO-0170386	APPROVED BY	DATE	REMOVE BURRS & BREAK SHARP EDGES .003/.015 [0.076/.381] CORNER FILLETS .02 [.51] MACHINED SURFACES $125 \sqrt{mm}$ $3.2 \sqrt{INCH}$ mm SHOWN IN [BRACKETS]	DATE: 01-07-2015			
ECO DESCRIPTION SEE ECO	<small>COPYRIGHT REGAL BELOIT AMERICA, INC. ALL RIGHTS RESERVED. PROPRIETARY AND CONFIDENTIAL INFORMATION - THIS DOCUMENT IS THE PROPERTY OF REGAL BELOIT AMERICA, INC. (OWNER) AND CONTAINS OWNER'S PROPRIETARY INFORMATION. ANY PERSON, CORPORATION OR OTHER FIRM RECEIVING IT IS DEEMED, BY RECEIVING IT, TO AGREE THAT IT, AND/OR ANY PART OF IT, SHALL NOT BE DISCLOSED TO ANY PERSON, CORPORATION OR OTHER ENTITY, DUPLICATED, AND/OR USED, EXCEPT AS EXPRESSLY APPROVED IN WRITING IN ADVANCE BY OWNER. THIS DOCUMENT SHALL BE RETURNED TO OWNER UPON REQUEST. IT MAY BE SUBJECT TO CERTAIN RESTRICTIONS UNDER APPLICABLE EXPORT CONTROL LAWS AND REGULATIONS.</small>			APPROVED BY: B.SHEN	DESCRIPTION MODEL-CFHP-56FR OUTLINE		
				DATE: 01-07-2015	MATERIAL -	PROCESS/FINISH -	
				REFERENCE -	THIRD ANGLE PROJECTION	SIZE DWG NO C 056T17D11042	SHEET 1



CONNECT AS FOLLOWS

HIGH VOLTAGE

- T1 - RED - LINE A
- T2 - WHITE - LINE B
- T3 - BLUE - LINE C

NOTES:

1. LEADS MAY BE MULTICOLORED AS SHOWN FOR GROUP -01 OR SINGLE COLOR FOR GROUP -02. IN EITHER CASE THE NUMBERING SEQUENCE WILL BE THE SAME.
2. CCW ROTATION; TO REVERSE ROTATION FOR EITHER VOLTAGE INTERCHANGE ANY TWO LINE LEADS

DRAWING REVISION A	REVISION BY X.AN	DATE 01-15-2014	TOLERANCES UNLESS OTHERWISE SPECIFIED	DRAWN BY: X.AN	Regal Beloit America, Inc.
ECO ECO-0069282	APPROVED BY Y.LIU	DATE 01-15-2015	DEC. INCH mm ANGLE .X ±0.1 [±2.5] ±0.5° .XX ±0.02 [±0.51] .XXX ±0.005 [±0.127] .XXXX ±0.0005 [±0.0127]	DATE: 01-15-2015	
ECO DESCRIPTION NEW MODEL RELEASE			REMOVE BURRS & BREAK SHARP EDGES .003/.015 [0.076/3.81]	APPROVED BY: Y.LIU	DESCRIPTION CONN DIAGRAM-EXTERNAL
<small>COPYRIGHT REGAL BELOIT AMERICA, INC. ALL RIGHTS RESERVED. PROPRIETARY AND CONFIDENTIAL INFORMATION - THIS DOCUMENT IS THE PROPERTY OF REGAL BELOIT AMERICA, INC. (OWNER) AND CONTAINS OWNER'S PROPRIETARY INFORMATION. ANY PERSON, CORPORATION OR OTHER FIRM RECEIVING IT IS DEEMED BY RECEIVING IT, TO AGREE THAT IT, AND/OR ANY PART OF IT, SHALL NOT BE DISCLOSED TO ANY PERSON, CORPORATION OR OTHER ENTITY, EXPLICATED, AND/OR USED, EXCEPT AS EXPRESSLY APPROVED IN WRITING IN ADVANCE BY OWNER. THIS DOCUMENT SHALL BE RETURNED TO OWNER UPON REQUEST. IT MAY BE SUBJECT TO CERTAIN RESTRICTIONS UNDER APPLICABLE EXPORT CONTROL LAWS AND REGULATIONS.</small>			CORNER FILLETS .02 [1.51]	DATE: 01-15-2015	MATERIAL
			MACHINED SURFACES $\sqrt{.25}$ INCH $\sqrt{.25}$ mm $\sqrt{.25}$ mm SHOWN IN [BRACKETS]	REFERENCE	PROCESS/FINISH
			THIRD ANGLE PROJECTION	SIZE DWG NO C D0000564-001	SHEET 1



CERTIFICATION DATA SHEET

P.O. BOX 8003
WAUSAU, WI 54401-8003
PH. 715-675-3311

CONN. DIAGRAM: D0000564-001

MODEL #: 56T17D11042 A

OUTLINE: 056T17D11042

MOUNTING: F1 OUT ODE BRKT RADIAL

WINDING #: SS0066575 5

TYPICAL MOTOR PERFORMANCE DATA

HP	kW	SYNC. RPM	F.L. RPM	FRAME	ENCLOSURE	KVA CODE	DESIGN
3/4	0.56	1800	1725	56C	DP	K	B

PH	Hz	VOLTS	AMPS	START TYPE	DUTY	INSL	S.F.	AMB°C
3	60	575	2.9	ACROSS THE LINE	CONTINUOUS	B3	1.25	40

FULL LOAD EFF:	81.1	3/4 LOAD EFF:	73	1/2 LOAD EFF:	66.5	GTD. EFF		ELEC. TYPE	
FULL LOAD PF:	56.9	3/4 LOAD PF:	62	1/2 LOAD PF:	50	72	SQ CAGE IND RUN		

F.L. TORQUE	LOCKED ROTOR AMPS	L.R. TORQUE	B.D. TORQUE	F.L. RISE°C
2.28 OZ-FT	7.2	8.8 OZ-FT 386 %	9.8 OZ-FT 430 %	-

SOUND PRESSURE @ 3 FT.	SOUND POWER	ROTOR WK^2	MAX. WK^2	SAFE STALL TIME	STARTS / HOUR	APPROX. MOTOR WGT
56 dBA	66 dBA	0.055 LB-FT^2	0 LB-FT^2	10 SEC.	0	22 LBS.

*** SUPPLEMENTAL INFORMATION ***

DE BRACKET TYPE	ODE BRACKET TYPE	MOUNT TYPE	ORIENTATION	SEVERE DUTY	HAZARDOUS LOCATION	DRIP COVER	SCREENS	PAINT
C-FACE	STANDARD	ROUND	HORIZONTAL	FALSE	NONE	FALSE	NONE	BLACK (POWDER)

BEARINGS		GREASE	SHAFT TYPE	SPECIAL DE	SPECIAL ODE	SHAFT MATERIAL	FRAME MATERIAL
DE	ODE						
BALL	BALL	POLYREX EM	T	NONE	NONE	AISI 1215 (MS1000)	ROLLED STEEL
6203	6203						

THERMO-PROTECTORS				THERMISTORS	CONTROL	SPACE HEATERS
THERMOSTATS	PROTECTORS	WDG RTDs	BRG RTDs			
NONE	NOT	NONE	NONE	NONE	FALSE	NONE VOLTS

* N O T E S *	INVERTER TORQUE: NONE INV. HP SPEED RANGE: NONE
	ENCODER: NONE NONE NONE NONE NONE PPR
	BRAKE: NONE NONE NONE P/N NONE NONE NONE NONE FT-LB NONE V NONE Hz

PREPARED BY: Radha Saikrishna Tanikella
 DATE: 10/31/2018 03:19:55 AM
 FORM 3531 REV.3 02/07/99
 ** Subject to change without notice.



MARATHON ELECTRIC CORPORATION
TYPICAL PERFORMANCE CURVE for AC MOTOR

Customer

Curve at

460

Volts

HP 0.76

PHASE 3

Model No 56T17D11042

60

HZ

VOLTS 575

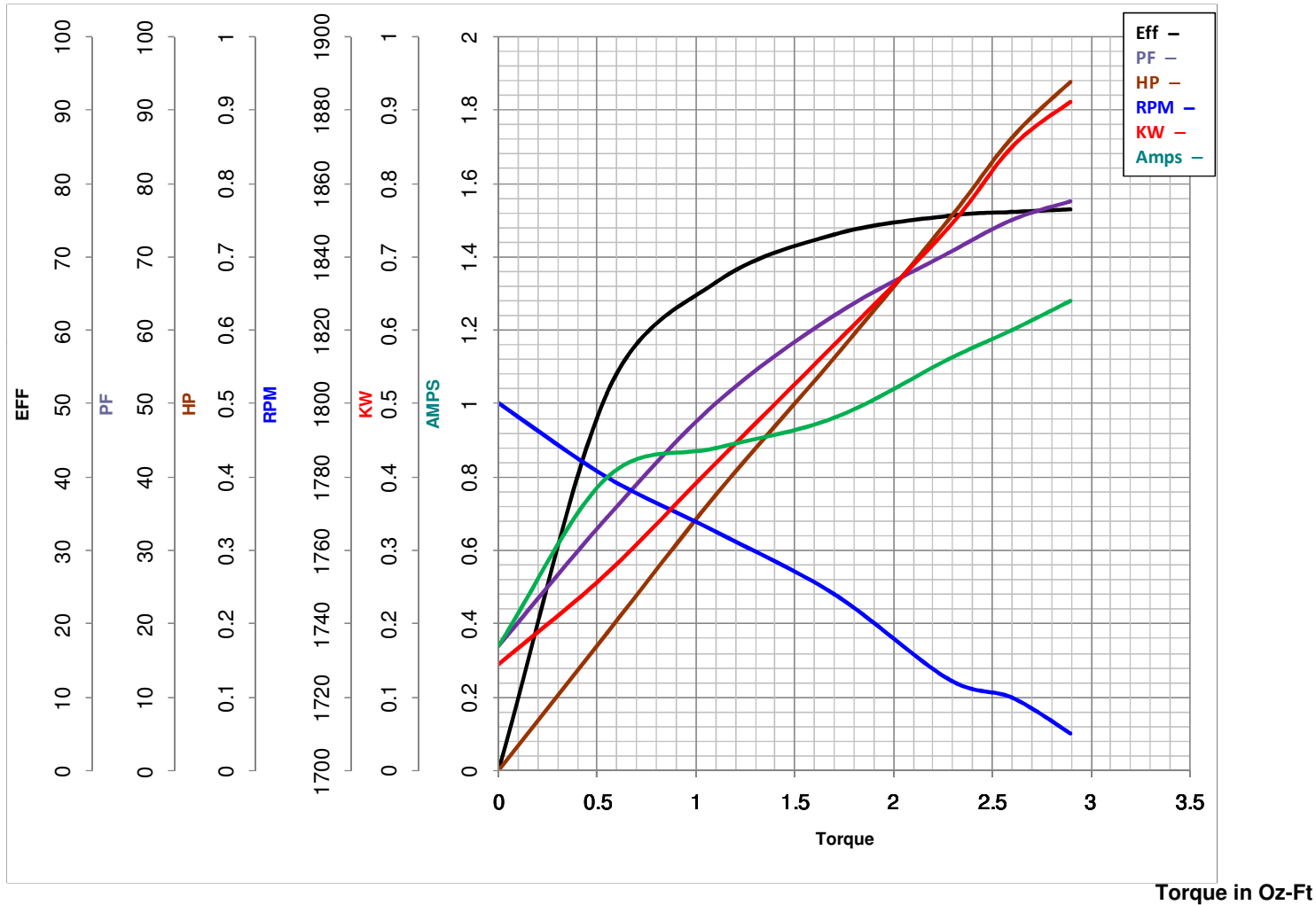
Catalog No G243A

0.75

HP

HZ 60

RPM 1725



FL TORQUE	<u>2.28</u>	Oz-Ft	FL AMPS	<u>2.9</u>	
BD TORQUE	<u>9.8</u>	Oz-Ft	PU TORQUE	<u>9.2</u>	Oz-Ft
LR TORQUE	<u>8.8</u>	Oz-Ft	LR AMPS	<u>7.2</u>	
WINDING	SS0066575-		Date	3/12/2019	

EC Declaration of Conformity

The undersigned representing
the manufacturer:

Regal Beloit America
100 East Randolph St.
Wausau, WI 54401

and the authorized representative
established within the Community:

Marathon Electric UK
6F Thistleton Road Ind. Estate
Market Overton
Oakham, Rutland LE15 7PP UK

are committed to providing customers with products that comply with applicable regulations and international protocols to which they are subject, including the requirements of the European Parliament Directive on the Harmonization of the laws relating to electrical equipment designed for use within certain voltage limits (2014/35/EU).

Regal Beloit America declares that the following product(s), to which this declaration relates, are in conformity with the relevant sections of the EC standards listed below.

This statement supersedes any statements previously issued pertaining to the product(s) listed below and is subject to change without notice.

Model No : 056T17D11042

(Model No. may contain prefix and/or suffix characters)

Catalog No : G243A

Rework No : N/A

Directives :

Low Voltage Directive 2014/35/EU

Harmonized Standards Used :

EN 60034-1: 2010 (IEC 60034-1: 2010)

EN 60034-5: 2001/A1:2007 (IEC 60034-5: 2000/A1:2006)

Authorized Representative:



Michael A. Logsdon
Vice President, Technology

Authorized Representative in the Community:



Julian Clark
Marketing Engineer

Created on 09/01/2022

CE 22