

PRODUCT INFORMATION PACKET

Model No: 056T17D11048

Catalog No: G244A

General Purpose Motor, 1 HP, 3 Ph, 60 Hz, 575 V, 1800 RPM, 56C Frame, DP



Regal and are trademarks of Regal Rexnord Corporation or one of its affiliated companies.
©2022 Regal Rexnord Corporation, All Rights Reserved. MC017097E

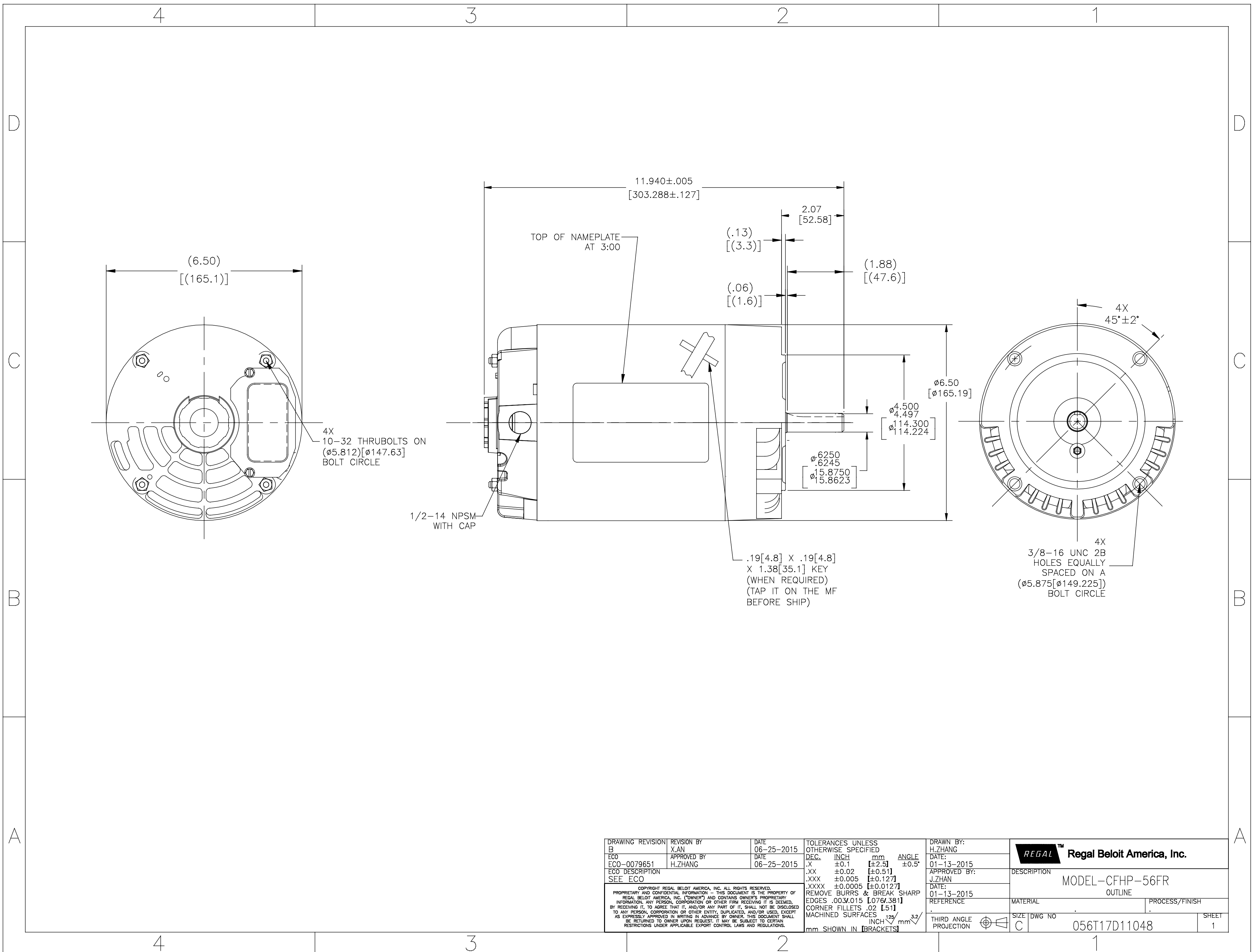
Nameplate Specifications

Output HP	1 Hp	Output KW	0.75 kW
Frequency	60 Hz	Voltage	575 V
Current	1.2 A	Speed	1725 rpm
Service Factor	1.15	Phase	3
Efficiency	83.5 %	Power Factor	56.1
Duty	Continuous	Insulation Class	B
Design Code	B	KVA Code	M
Frame	56C	Enclosure	Drip Proof
Thermal Protection	No Protection	Ambient Temperature	40 °C
Drive End Bearing Size	6203	Opp Drive End Bearing Size	6203
UL	Recognized	CSA	Y
CE	Y	IP Code	22
Number of Speeds	1		

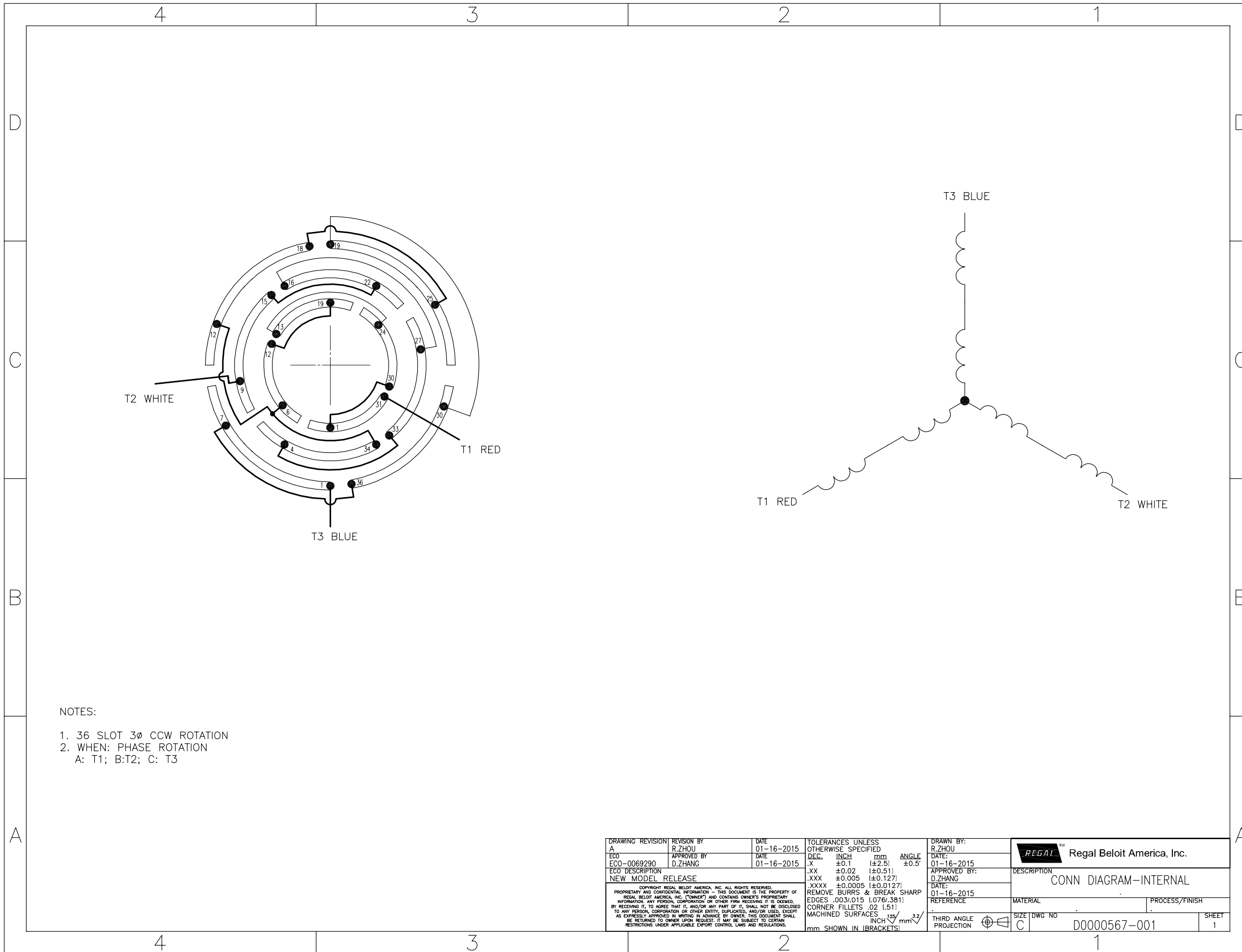
Technical Specifications

Electrical Type	Squirrel Cage Induction Run	Starting Method	Across The Line
Poles	4	Rotation	Reversible
Resistance Main	0 Ohms	Mounting	Round
Motor Orientation	Horizontal	Drive End Bearing	Ball
Opp Drive End Bearing	Ball	Frame Material	Rolled Steel
Shaft Type	T	Overall Length	11.93 in
Shaft Diameter	0.625 in	Shaft Extension	1.88 in
Assembly/Box Mounting	F1 OUT ODE BRKT RADIAL		
Connection Drawing	D0000567-001	Outline Drawing	056T17D11048-S01

This is an uncontrolled document once printed or downloaded and is subject to change without notice. Date Created:09/15/2022



DRAWING REVISION B	REVISION BY X.AN	DATE 06-25-2015	TOLERANCES UNLESS OTHERWISE SPECIFIED	DRAWN BY: H.ZHANG	Regal Beloit America, Inc.
ECO ECO-0079651	APPROVED BY H.ZHANG	DATE 06-25-2015	DEC. INCH mm ANGLE .XX ±0.02 [± 0.51] .XXX ±0.005 [± 0.127] .XXXX ±0.0005 [± 0.0127]	DATE: 01-13-2015	
ECO DESCRIPTION SEE ECO			REMOVE BURRS & BREAK SHARP EDGES .003/.015 [$0.076/0.381$] CORNER FILLETS .02 [0.51] MACHINED SURFACES $125 \sqrt{}$ INCH $3.2 \sqrt{}$ mm mm SHOWN IN [BRACKETS]	APPROVED BY: J.ZHAN	DESCRIPTION MODEL-CFHP-56FR OUTLINE
<small>COPYRIGHT REGAL BELOIT AMERICA, INC. ALL RIGHTS RESERVED. PROPRIETARY AND CONFIDENTIAL INFORMATION - THIS DOCUMENT IS THE PROPERTY OF REGAL BELOIT AMERICA, INC. (OWNER) AND CONTAINS OWNER'S PROPRIETARY INFORMATION. ANY PERSON, CORPORATION OR OTHER FIRM RECEIVING IT IS DEEMED, BY RECEIVING IT, TO AGREE THAT IT, AND/OR ANY PART OF IT, SHALL NOT BE DISCLOSED TO ANY PERSON, CORPORATION OR OTHER ENTITY, DUPLICATED, AND/OR USED, EXCEPT AS EXPRESSLY APPROVED IN WRITING IN ADVANCE BY OWNER. THIS DOCUMENT SHALL BE RETURNED TO OWNER UPON REQUEST. IT MAY BE SUBJECT TO CERTAIN RESTRICTIONS UNDER APPLICABLE EXPORT CONTROL LAWS AND REGULATIONS.</small>				DATE: 01-13-2015	MATERIAL
				REFERENCE	PROCESS/FINISH
				THIRD ANGLE PROJECTION	SIZE DWG NO C 056T17D11048
					SHEET 1



NOTES:

1. 36 SLOT 3Ø CCW ROTATION
2. WHEN: PHASE ROTATION
A: T1; B:T2; C: T3

DRAWING REVISION A	REVISION BY R.ZHOU	DATE 01-16-2015	TOLERANCES UNLESS OTHERWISE SPECIFIED		DRAWN BY: R.ZHOU	Regal Beloit America, Inc.
ECO ECO-0069290	APPROVED BY D.ZHANG	DATE 01-16-2015	DEC.	INCH mm ANGLE	DATE: 01-16-2015	
ECO DESCRIPTION NEW MODEL RELEASE			.XX	±0.02 [±0.51]	APPROVED BY: D.ZHANG	DESCRIPTION CONN DIAGRAM-INTERNAL
<small>COPYRIGHT REGAL BELOIT AMERICA, INC. ALL RIGHTS RESERVED. PROPRIETARY AND CONFIDENTIAL INFORMATION - THIS DOCUMENT IS THE PROPERTY OF REGAL BELOIT AMERICA, INC. (OWNER) AND CONTAINS OWNER'S PROPRIETARY INFORMATION. ANY PERSON, CORPORATION OR OTHER FIRM RECEIVING IT IS DEEMED, BY RECEIVING IT, TO AGREE THAT IT, AND/OR ANY PART OF IT, SHALL NOT BE DISCLOSED TO ANY PERSON, CORPORATION OR OTHER ENTITY, EXPLICATED, AND/OR USED, EXCEPT AS EXPRESSLY APPROVED IN WRITING IN ADVANCE BY OWNER. THIS DOCUMENT SHALL BE RETURNED TO OWNER UPON REQUEST. IT MAY BE SUBJECT TO CERTAIN RESTRICTIONS UNDER APPLICABLE EXPORT CONTROL LAWS AND REGULATIONS.</small>			.XXX	±0.005 [±0.127]	DATE: 01-16-2015	MATERIAL
			.XXXX	±0.0005 [±0.0127]	REFERENCE	PROCESS/FINISH
			REMOVE BURRS & BREAK SHARP EDGES .003/.015 [0.076/3.81]		THIRD ANGLE PROJECTION	SIZE DWG NO
			CORNER FILLETS .02 [1.51]			D0000567-001
			MACHINED SURFACES $\sqrt{25}$ INCH/mm ²			
			mm SHOWN IN [BRACKETS]		SHEET	1



**P.O. BOX 8003
WAUSAU, WI 54401-8003
PH. 715-675-3311**

CERTIFICATION DATA SHEET

CUSTOMER:
ORDER #:
CONN. DIAGRAM: D0000567-001
OUTLINE: 056T17D11048
WINDING #: SS0070160 5

CUSTOMER PO#:
MODEL #: 56T17D11048 A
CUSTOMER PART #:
MOUNTING: F1 OUT ODE BRKT RADIAL

TYPICAL MOTOR PERFORMANCE DATA

HP	kW	SYNC. RPM	F.L. RPM	FRAME	ENCLOSURE	KVA CODE	DESIGN
1	0.75	1800	1725	56C	DP	M	B

PH	Hz	VOLTS	AMPS	START TYPE	DUTY	INSL	S.F.	AMB°C
3	60	575	1.2	ACROSS THE LINE	CONTINUOUS	B3	1.15	40

FULL LOAD EFF:	83.5	3/4 LOAD EFF:	84.6	1/2 LOAD EFF:	80.3	GTD. EFF		ELEC. TYPE	
FULL LOAD PF:	56.1	3/4 LOAD PF:	62	1/2 LOAD PF:	49	83.5		SQ CAGE IND RUN	

F.L. TORQUE	LOCKED ROTOR AMPS	L.R. TORQUE	B.D. TORQUE	F.L. RISE°C
48 OZ-FT	10.8	170 OZ-FT 354 %	247 OZ-FT 515 %	60

SOUND PRESSURE @ 3 FT.	SOUND POWER	ROTOR WK^2	MAX. WK^2	SAFE STALL TIME	STARTS / HOUR	APPROX. MOTOR WGT
0 dBA	10 dBA	0 LB-FT^2	1.5 LB-FT^2	10 SEC.	2	34 LBS.

***** SUPPLEMENTAL INFORMATION *****

DE BRACKET TYPE	ODE BRACKET TYPE	MOUNT TYPE	ORIENTATION	SEVERE DUTY	HAZARDOUS LOCATION	DRIP COVER	SCREENS	PAINT
C-FACE	STANDARD	ROUND	HORIZONTAL	FALSE	NONE	FALSE	NONE	BLACK (POWDER)

BEARINGS		GREASE	SHAFT TYPE	SPECIAL DE	SPECIAL ODE	SHAFT MATERIAL	FRAME MATERIAL
DE	ODE						
BALL	BALL	CHEVRON-SRI	T	NONE	NONE	AISI 1215 (MS1000)	ROLLED STEEL
6203	6203						

THERMO-PROTECTORS				THERMISTORS	CONTROL	SPACE HEATERS
THERMOSTATS	PROTECTORS	WDG RTDs	BRG RTDs			
NONE	NOT	NONE	NONE	NONE	FALSE	NONE VOLTS

*
N
O
T
E
S
*

INVERTER TORQUE: NONE
INV. HP SPEED RANGE: NONE
ENCODER: NONE NONE NONE NONE NONE PPR
BRAKE: NONE NONE NONE P/N NONE NONE NONE NONE FT-LB NONE V NONE Hz

PREPARED BY: Dinesh
Suddula **DATE:**
02/08/2019 03:21:36 AM
FORM 3531 REV.3 02/07/99
** Subject to change without notice.



MARATHON ELECTRIC CORPORATION
TYPICAL PERFORMANCE CURVE for AC MOTOR

Customer

Curve at

575

Volts

HP 1.00

PHASE 3

Model No 56T17D11048

60

HZ

VOLTS 575

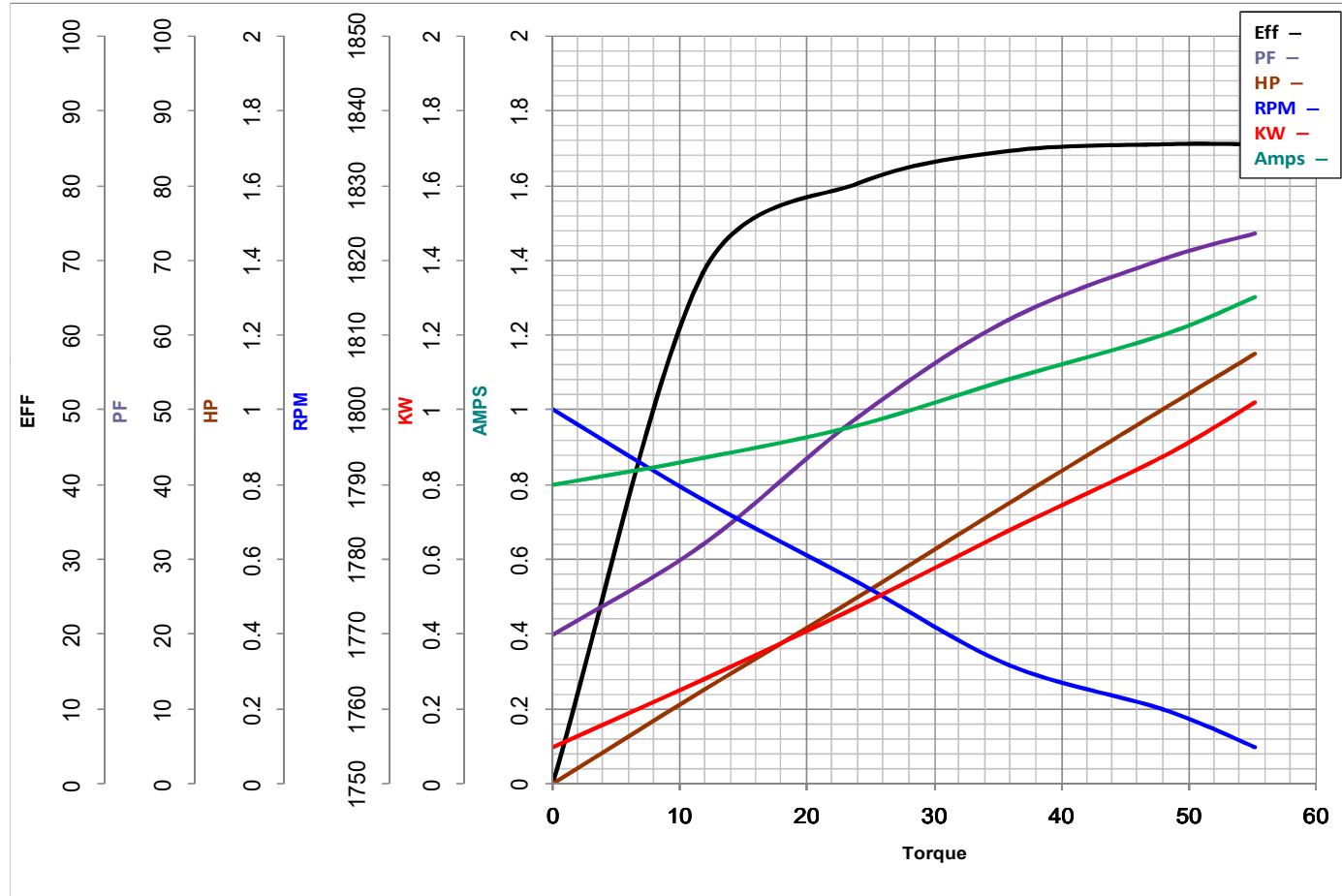
Catalog No G244A

1

HP

HZ 60

RPM 1725



Torque in Oz.Ft

FL TORQUE 48 Oz.Ft
BD TORQUE 247.0 Oz.Ft
LR TORQUE 170 Oz.Ft

FL AMPS 1.2
PU TORQUE 170.0 Oz.Ft
LR AMPS 10.8

WINDING SS0070160-5

Date 1/4/2019

EC Declaration of Conformity

The undersigned representing
the manufacturer:

Regal Beloit America
100 East Randolph St.
Wausau, WI 54401

and the authorized representative
established within the Community:

Marathon Electric UK
6F Thistleton Road Ind. Estate
Market Overton
Oakham, Rutland LE15 7PP UK

are committed to providing customers with products that comply with applicable regulations and international protocols to which they are subject, including the requirements of the European Parliament Directive on the Harmonization of the laws relating to electrical equipment designed for use within certain voltage limits (2014/35/EU).

Regal Beloit America declares that the following product(s), to which this declaration relates, are in conformity with the relevant sections of the EC standards listed below.

This statement supersedes any statements previously issued pertaining to the product(s) listed below and is subject to change without notice.

Model No : 056T17D11048

(Model No. may contain prefix and/or suffix characters)

Catalog No : G244A

Rework No : N/A

Directives :

Low Voltage Directive 2014/35/EU

Harmonized Standards Used :

EN 60034-1: 2010 (IEC 60034-1: 2010)

EN 60034-5: 2001/A1:2007 (IEC 60034-5: 2000/A1:2006)

Authorized Representative:



Michael A. Logsdon
Vice President, Technology

Authorized Representative in the Community:



Julian Clark
Marketing Engineer

Created on 09/01/2022

CE 22