

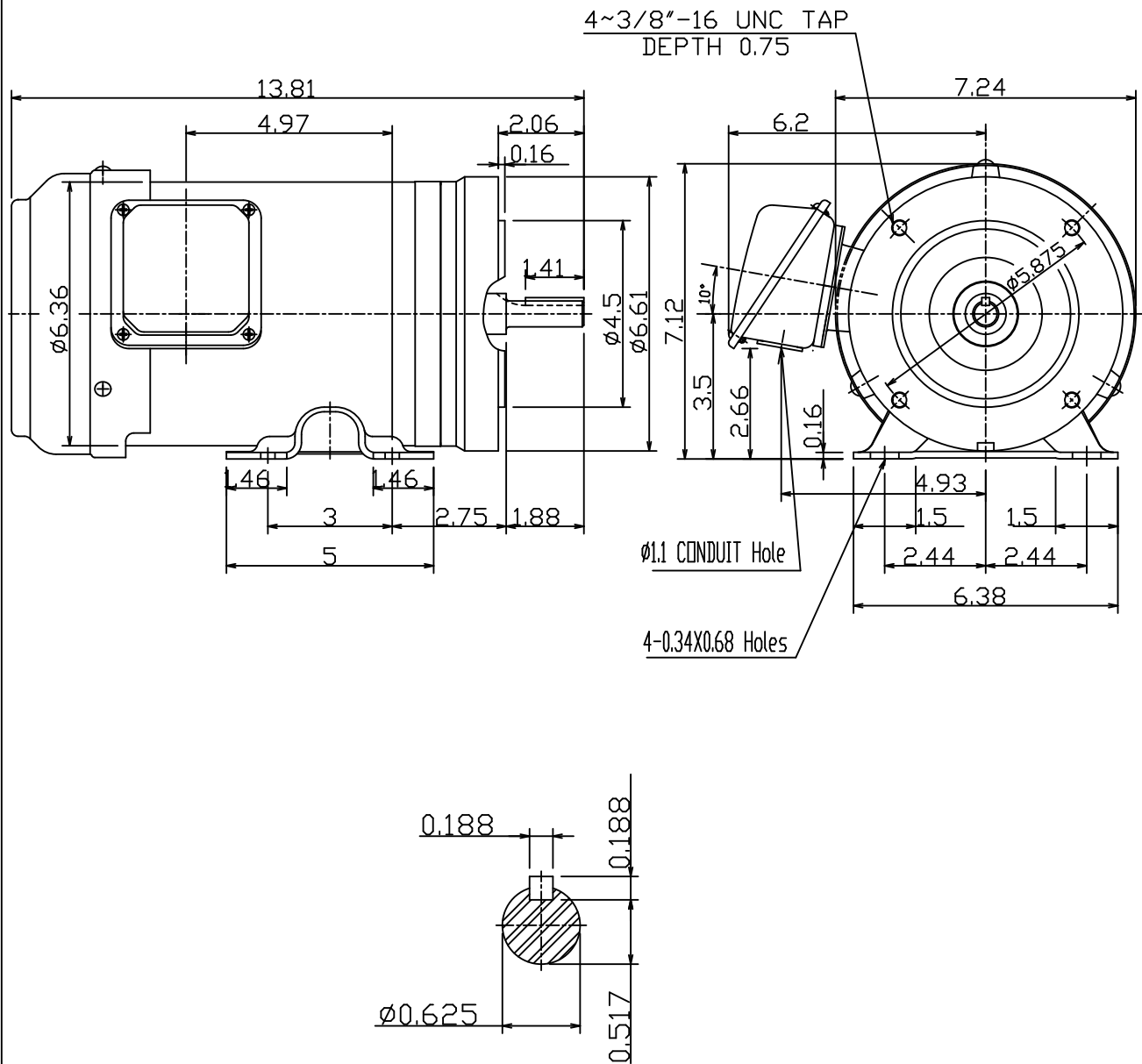
DATE  
FEBRUARY 16, 2013  
CATALOG #  
GH0/24C

OUTLINE DIMENSIONS  
3-PHASE INDUCTION MOTOR

MOTOR TYPE:  
AEGHCF  
FRAME NO. 56C

Pole	HP	kW	Hz	VOLT	r/min
4	.25	.19	60	230/460	1800

Ins	Rating	Dimension in	Approx Weight	Bearings
F	CONT.	inch.	30	DE: 6204ZZ NDE: 6203ZZ



DWN.	陳奕元	03-01-11
CHKD.	陳敬元	03-01-11
APPD.	蔡明 <sup>o</sup> ×	03-01-11



DWG NO.  
31049Z107990

SPECIFICATION TABLE OF 3-PHASE SQUIRREL CAGE INDUCTION MOTOR	CUSTOMER			
	INQ. NO.		EQUIPMENT	
	JOB. NO.		MACHINE	
	TOTAL SETS		ITEM NO.	

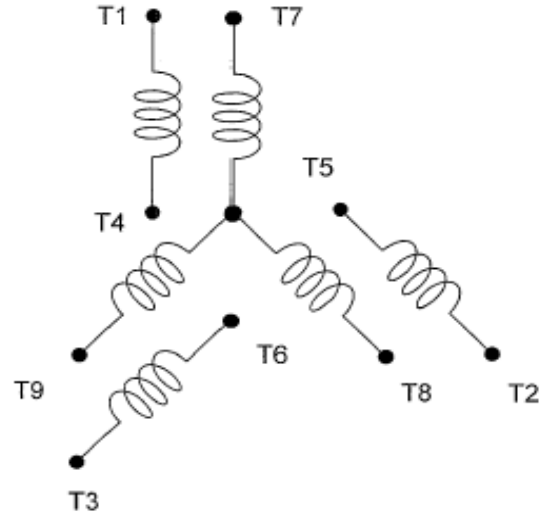
ITEM	TERMS	DESCRIPTION				
1	Model	AEGHCF				
2	Code or Standard	Dimensions	Frame Assignment	Performance	Test	
		NEMA	NEMA	NEMA	NEMA	
3	Rating	0.25 HP	4 Pole	460 Volt	3 Phase 60 Hz	
4	Service Duty	Continuous Rating S.F. 1.15				
5	Starting Method	D.O.L.				
6	Rotation	Bi-Direction				
7	Drive Method	Direct Coupling, Belt Drive				
8	Environment	Amb.Temp. :	-15~40°C			
		Humidity : Less Than	90%RH			
		Altitude : Up to	3,300ft			
9	Enclosure & Protection	IP44 : Totally Enclosure				
10	Cooling	IC411 : Self External Fan, Surface Cooling				
11	Mounting	IM2101 : HS, Foot				
12	Dimensions	Dr#	TWMC20180621005	Frame No :	56C	
13	Fan & Fan Cover	Fan: ---	Fan Cover : ---			
14	Terminal Box	Pressed Steel				
15	Lubricant	Li-Base Grease(MULTEMP SRL)				
16	Painting	Color :	Munsell 5PB 3/8			
17	Stator Winding	Ins. Class	F			
18	Starting Performance	LRC≤	3	Amp	LRT/FLT 240 %	
19	Operating Performance  At Rated 460 Volt	%Load	100	75	50	Break Down Torque 340 %FLT
		Amp	0.45	0.40	0.36	
		Eff. %	72.0	70.0	63.5	Temp. Rise Limit( R) Stator: 80°C AT S.F.1.0
		P.F. %	73.0	63.5	51.0	
		R.P.M	1735	1751.25	1767.5	
20	Note					

PRELIMINARY  
 DATE: 6/21/2018

APPD.	cookc	6/21/2018	<b>TECO Middle East Electrical and Machinery Co. Ltd</b>	DWG NO.
CHKD.	cookc	6/21/2018		TWMC20180621005
DWN.	cookc	6/21/2018		PN Ver:05

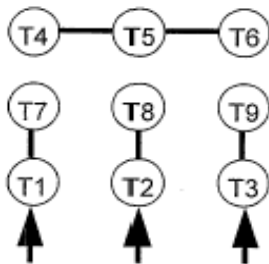
DATE:  
April 28, 2009

# CONNECTION DIAGRAM

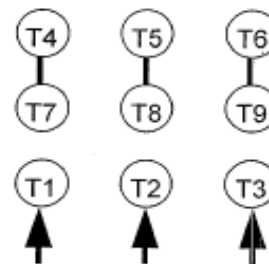


**SCHEMATIC - 2Y/Y CONNECTION**

## ACROSS THE LINE CONNECTION



**LINE  
230 VOLT CONNECTION**



**LINE  
460 VOLT CONNECTION**