

DATE  
JAN 19, 2012

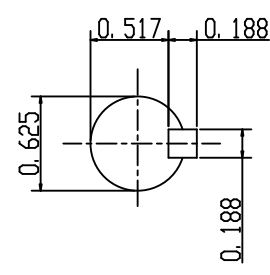
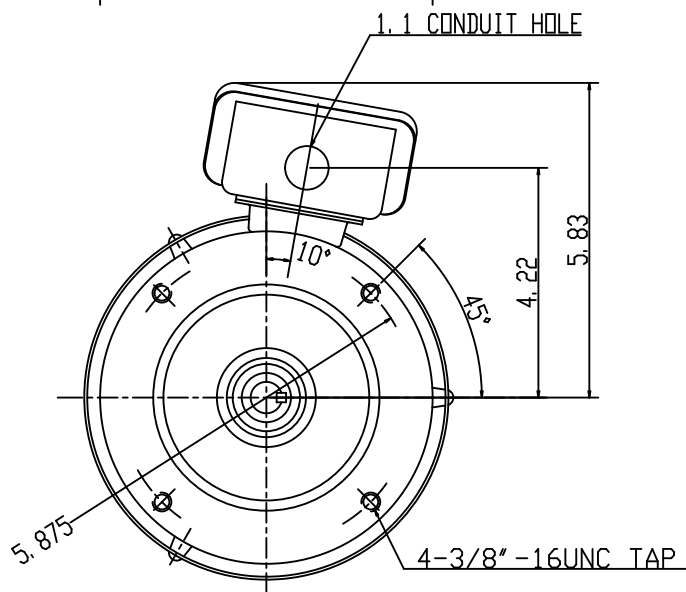
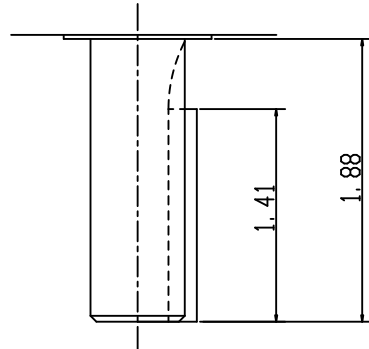
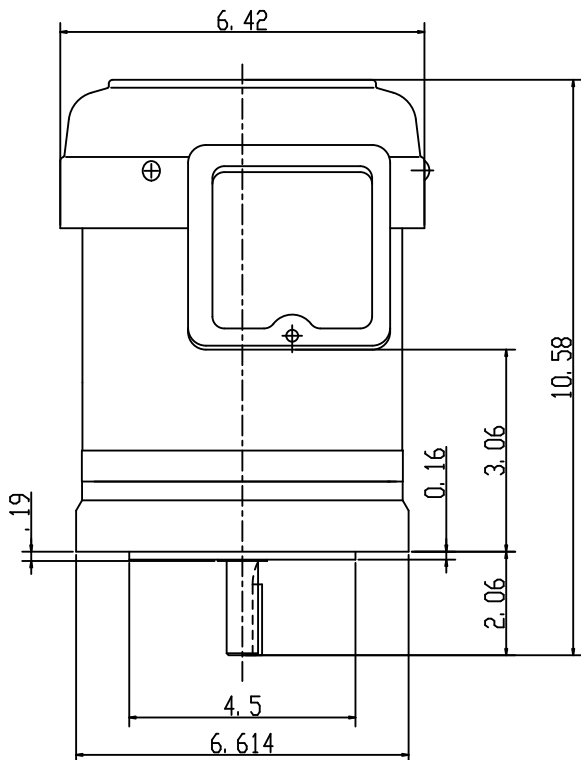
OUTLINE DIMENSIONS  
3-PHASE INDUCTION MOTOR

MODEL TYPE:  
AETHCF  
FRAME NO. 56C

CATALOG NO.  
GHV0/26C

Pole	HP	KW	Hz	VOLT	Syn. Speed R. P. M
2	1/4	.19	60	230/460	1200

Ins.	Rating	Dimensions in	Approx Weight	Bearings
F	CONT.	inch	24 lbs.	DF: 6204ZZ NDE: 6203ZZ



APPD.	W. H. TSAI	03 31 03
CHKD.	J. B. CHEN	03 31 03
DWN.	P. J. CHEN	03 31 03



DWG NO.  
31049Z105  
0724



TEFC, NEMA, DESIGN - B  
CLASS F, 40°C AMBIENT, CONTINUOUS DUTY,  
S.F. 1.15 230/460V 60HZ

### TYPICAL PERFORMANCE

( 230 V )

HP	FULL LOAD RPM	FRAME SIZE	EFFICIENCY(%)			POWER FACTOR(%)			CURRENT			TORQUE				ROTOR WK <sup>2</sup> lb-ft <sup>2</sup>	NEMA CODE LETTER	USED AT			
			FULL LOAD		3/4 LOAD	1/2 LOAD	FULL LOAD	3/4 LOAD	1/2 LOAD	FULL LOAD	208V USABLE	LOCKED ROTOR	FULL LOAD	LOCKED ROTOR	PULL UP			BREAK DOWN	50Hz	190V	
			NOM.	MIN.						(A)	ON-A	(A)	lb-ft	%FLT	%FLT			%FLT	HP	RPM	ON-A
0.25	3470	56	72.0	68.0	72.0	69.0	82.0	72.0	60.0	0.79	0.88	6.0	0.378	240	230	315	0.017	L	0.25	2795	1.10
	1735	56	72.0	68.0	70.0	63.5	73.0	63.5	51.0	0.89	0.98	6.0	0.757	240	220	340	0.028	L		1410	1.10
	1145	56	70.0	66.0	66.5	59.0	61.0	52.0	40.0	1.10	1.21	6.0	1.146	270	260	355	0.042	L		925	1.21
0.33	3460	56	71.5	67.5	69.5	64.0	80.5	73.5	62.0	1.08	1.20	7.0	0.506	245	240	315	0.017	K	0.33	2790	1.28
	1735	56	75.5	72.0	74.0	69.0	74.5	64.5	51.0	1.11	1.23	7.0	1.009	235	225	330	0.033	K		1405	1.33
	1145	56	72.0	68.0	68.5	62.0	61.0	52.0	40.0	1.42	1.57	7.0	1.529	265	255	345	0.047	K		920	1.54
0.50	3445	56	73.4	69.7	71.5	67.0	81.5	74.0	62.0	1.57	1.73	10.0	0.762	215	210	290	0.017	J	0.50	2780	1.86
	1725	56	78.2	75.0	77.0	73.5	81.0	73.0	60.0	1.48	1.63	10.0	1.522	270	240	305	0.044	J		1380	1.93
	1145	56	75.5	72.0	73.5	68.0	63.0	53.0	40.5	1.97	2.18	12.0	2.293	305	295	380	0.075	L		925	2.31
0.75	3425	56	76.8	73.4	75.0	70.5	80.0	72.0	60.0	2.29	2.53	16.0	1.150	330	290	355	0.020	K	0.75	2758	2.68
	1730	56	81.1	78.2	80.0	76.0	77.5	69.0	55.5	2.23	2.47	18.0	2.276	380	350	390	0.042	L		1410	2.77
	1150	56	81.7	79.0	81.5	77.0	67.5	59.0	51.0	2.55	2.82	16.0	3.424	230	205	285	0.105	K		925	2.95
1.0	3420	56	77.0	74.0	76.5	71.5	79.5	71.0	57.5	3.06	3.38	22.0	1.535	295	290	380	0.022	K	1.0	2725	3.60
	1750	56	85.5	82.5	85.0	82.0	75.5	67.0	54.0	2.90	3.21	30.0	3.000	365	310	410	0.100	N		1435	3.33
	1150	56	82.5	80.0	82.0	79.0	66.0	57.0	44.0	3.44	3.80	30.0	4.566	260	240	320	0.122	N		930	3.98
1.5	3510	56	85.5	82.5	85.5	83.0	83.0	76.5	64.0	3.96	4.38	40.0	2.244	400	310	450	0.059	M	1.5	2875	4.60
	1740	56	86.5	84.0	86.0	84.0	80.5	73.5	61.0	0.00	0.00	40.0	4.526	295	220	335	0.115	M		1410	4.85
2.0	3505	56	86.5	84.0	86.0	84.0	85.0	79.0	67.0	5.09	5.63	50.0	2.996	340	280	430	0.068	L	2.0	2870	6.06
	1740	56	86.5	84.0	86.0	84.0	79.0	71.0	58.0	5.48	6.06	50.0	6.035	390	310	390	0.143	L		1420	6.50
3.0	3480	56	86.5	84.0	87.5	87.0	89.0	85.0	75.5	7.30	8.07	64.0	4.526	330	245	370	0.088	L	3.0	2810	9.06

- NOTE :
- Breakdown & locked rotor torques are shown as average expected values.
  - Efficiency, power factor, speed and torque are the same for other voltages.  
Current values vary inversely with voltage.
  - Tolerance According to NEMA MG1-12 & IEC 60034-1.
  - Data subject to change without notice.

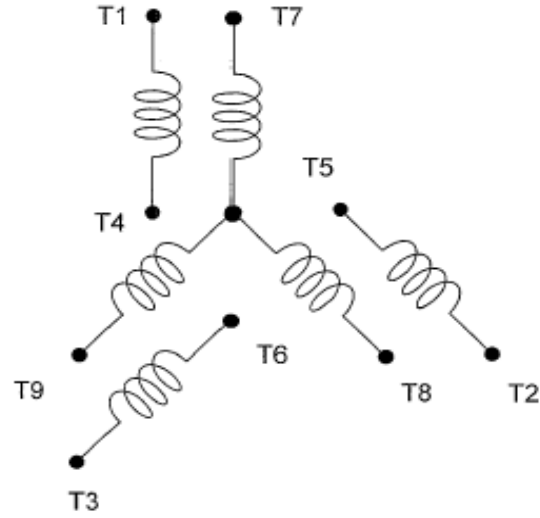


APPD.	Tsunghao	5-Jun-14	<b>TECO Electric &amp; Machinery Co., Ltd.</b>	DWG NO.	<b>31057H34230</b>
CHKD.	H.C.Yen	29-Apr-14			
DWN.	AMO	24-Apr-14			

DATE:  
April 28, 2009

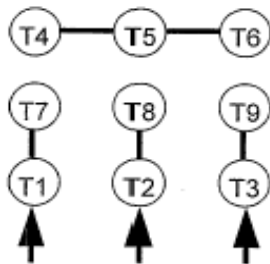
# CONNECTION DIAGRAM

GHV0/26C

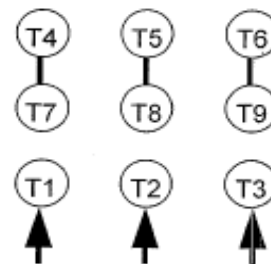


**SCHEMATIC - 2Y/Y CONNECTION**

## ACROSS THE LINE CONNECTION



**LINE  
230 VOLT CONNECTION**



**LINE  
460 VOLT CONNECTION**