

PRODUCT INFORMATION PACKET

Model No: 182TTFB6078

Catalog No: GT1205

1.50 HP General Purpose Motor, 3 phase, 1200 RPM, 230/460 V, 182TC Frame, TEFC
General Purpose Motors

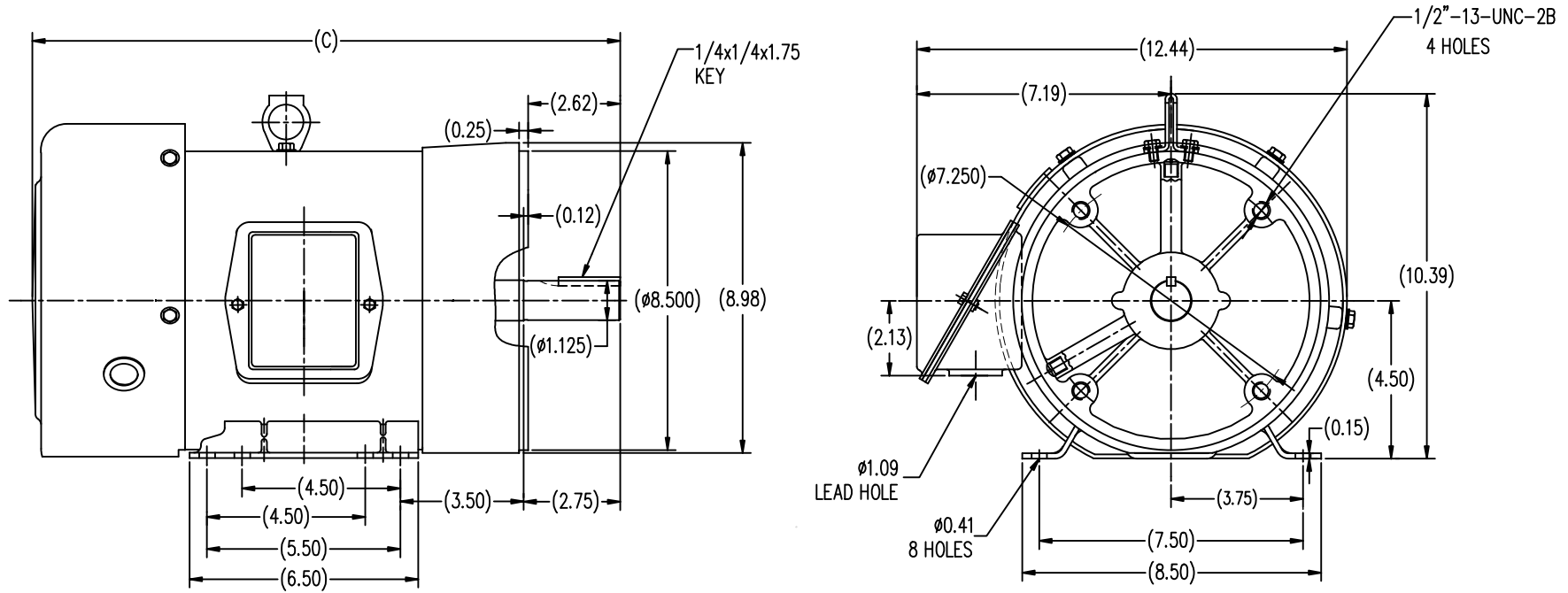


Nameplate Specifications

| | | | |
|------------------------|-------------------|----------------------------|------------------------------------|
| Output HP | 1.50 Hp | Output KW | 1.1 kW |
| Frequency | 60 Hz | Voltage | 230/460 V |
| Current | 4.8/2.4 A | Speed | 1185 rpm |
| Service Factor | 1.15 | Phase | 3 |
| Efficiency | 87.5 % | Power Factor | 69 |
| Duty | Continuous | Insulation Class | F |
| Design Code | B | KVA Code | J |
| Frame | 182TC | Enclosure | Totally Enclosed Fan Cooled |
| Thermal Protection | No | Ambient Temperature | 40 °C |
| Drive End Bearing Size | 6206 | Opp Drive End Bearing Size | 6205 |
| UL | Recognized | CSA | Y |
| CE | Y | IP Code | 43 |
| Number of Speeds | 1 | | |

Technical Specifications

| | | | |
|-----------------------|------------------------------------|-------------------|------------------------|
| Electrical Type | Squirrel Cage Induction Run | Starting Method | Across The Line |
| Poles | 6 | Rotation | Reversible |
| Resistance Main | 5.95 Ohms | Mounting | Rigid Base |
| Motor Orientation | Horizontal | Drive End Bearing | Ball |
| Opp Drive End Bearing | Ball | Frame Material | Rolled Steel |
| Shaft Type | T | Overall Length | 15.75 in |
| Shaft Diameter | 1.125 in | Shaft Extension | 2.62 in |
| Assembly/Box Mounting | F1/F2 CAPABLE | | |
| Connection Drawing | A-EE7308 | Outline Drawing | SS620296-182TC |

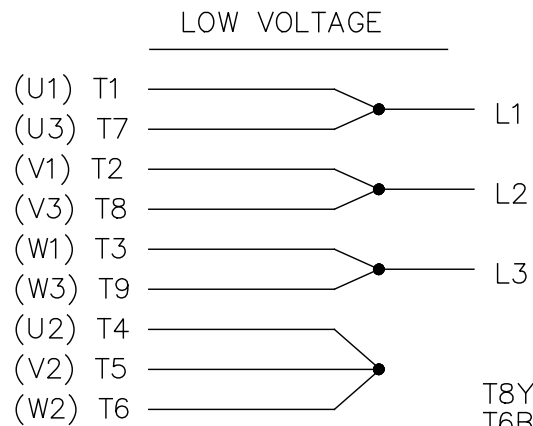


| | |
|------------|-------|
| TTFB 182TC | 15.75 |
| TTFB 184TC | 16.73 |
| FRAME | C |

| TOLERANCES UNLESS SPECIFIED | | REGAL-BELOIT CORPORATION | | DRAWN SY 4-19-2010 | |
|--|----------|--------------------------|-------------|--------------------|---------------|
| DEC. | INCHES | REGAL-BELOIT CORPORATION | | CHK | ZYH 4-19-2010 |
| .X | ±.1 | TITLE | | APPD | CL 4-19-2010 |
| .XX | ±.03 | OUTLINE | | SCALE | 1=4 |
| .XXX | ±.005 | 182/184TC-TTFB | | REF | |
| .XXXX | ±.0005 | MAT'L | | FMF | HWADA |
| NO. | REVISION | BY & DATE | CHK | ANG | ±1/2 |
| THIS DRAWING IN DESIGN AND DETAIL IS OUR PROPERTY AND MUST NOT BE USED EXCEPT IN CONNECTION WITH OUR WORK ALL RIGHTS OF DESIGN AND INVENTION ARE RESERVED THIS IS AN ELECTRONICALLY GENERATED DOCUMENT - DO NOT SCALE THIS PRINT | | | RFP | CAD FILE | SS620296 |
| | | | DIST | SIZE | B |
| | | | DRAWING NO. | | SS620296 |
| | | | REV. | | |

EE7308

THREE PHASE
DUAL VOLTAGE MOTOR



VIEW OF TERMINAL END

REF.
WINDING DIAGRAM

T8Y, T2Y, T2BL, T4BX, T2EC, T2G
T6BZ, T2B, T6BL, T4AV, T6B, T4B

OPTIONAL CORD
CONNECTION

L1 — WHITE
L2 — RED
L3 — BLACK

| NO. | REVISION | BY & DATE | CHK | ANG | TOLERANCES UNLESS SPECIFIED | | FINISH | DRAWN RM 11/20/1990 | | | | |
|--|--|----------------|-----|-------|--------------------------------|--------|---|---------------------|--------|--------------------|-----------|--------|
| | | | | | DEC. | INCHES | | | | | | |
| 5 | CHG TO REGAL LOGO | SL 09/10/2015 | AB | | | | | CHK ML 11/21/1990 | | | | |
| 4 | REVISED IEC NOTATIONS | MSG 11/15/2011 | CMN | .X | ±.1 | | | APPD SAS 04/24/2003 | | | | |
| 3 | ADDED IEC NOTATIONS... (U1), (V1) ETC. MU95194 | MSG 5/10/2010 | MJS | .XX | ±.02 | | | SCALE 1=1 | | | | |
| 2 | ADDED THE OPTIONAL CORD CONNECTION MU46318 | RDH 04/24/2003 | DRS | .XXX | ±.005 | | TITLE CONNECTION DIAGRAM 3Ø - DUAL VOLTAGE MOTOR | REF | | | | |
| 1 | REDRAWN | RM 11/20/1990 | | .XXXX | ±.0005 | | MAT'L. | FMF | | | | |
| | | | | | ±7'30" | | | PREV | | | | |
| THIS DRAWING IN DESIGN AND DETAIL IS OUR PROPERTY AND MUST NOT BE USED EXCEPT IN CONNECTION WITH OUR WORK ALL RIGHTS OF DESIGN AND INVENTION ARE RESERVED THIS IS AN ELECTRONICALLY GENERATED DOCUMENT - DO NOT SCALE THIS PRINT | | | | | | | RFP | CAD FILE ee7308 | SIZE A | DRAWING NO. EE7308 | PAGE OF 5 | REV. 5 |
| | | | | | | | DIST WP | | | | | |



CERTIFICATION DATA SHEET

Model#: 182TTFB6078 AA **WINDING#:** CHT18260001 NONE 1
CONN. DIAGRAM: A-EE7308 **ASSEMBLY:** F1/F2 CAPABLE
OUTLINE: B-SS620296

TYPICAL MOTOR PERFORMANCE DATA

| HP | KW | SYNC. RPM | F.L. RPM | FRAME | ENCLOSURE | KVA CODE | DESIGN |
|---------|----------|-----------|----------|-------|-----------|----------|--------|
| 1 1/2&1 | 1.12&.75 | 1200 | 1185&990 | 182TC | TEFC | J | B |

| PH | Hz | VOLTS | FL AMPS | START TYPE | DUTY | INSL | S.F | AMB°C | ELEVATION |
|----|-------|---------------------|-------------|--------------------|----------------|------|----------|-------|-----------|
| 3 | 60/50 | 230/460#190/ 380 | 4.8/2.4&4/2 | ACROSS THE LINE | CONTINUOU S | F7 | 1.15/1.0 | 40 | 3300 |

| FULL LOAD EFF: 87.5&85.5 | 3/4 LOAD EFF: 85.5 | 1/2 LOAD EFF: 82.5 | GTD. EFF | ELEC. TYPE | NO LOAD AMPS |
|-----------------------------|--------------------|--------------------|----------|-----------------|--------------|
| FULL LOAD PF: 69&63.5 | 3/4 LOAD PF: 61 | 1/2 LOAD PF: 48 | 86.5 | SQ CAGE IND RUN | 3 / 1.5 |

| F.L. TORQUE | LOCKED ROTOR AMPS | L.R. TORQUE | B.D. TORQUE | F.L. RISE°C |
|-------------|-------------------|----------------|----------------|-------------|
| 6.7 LB-FT | 34 / 17 | 11.5 LB-FT 170 | 20.5 LB-FT 305 | 40 |

| SOUND PRESSURE @ 3 FT. | SOUND POWER | ROTOR WK^2 | MAX. WK^2 | SAFE STALL TIME | STARTS /HOUR | APPROX. MOTOR WGT |
|---------------------------|-------------|--------------|------------|-----------------|-----------------|----------------------|
| 55 dBA | 65 dBA | 0.45 LB-FT^2 | 32 LB-FT^2 | 25 SEC. | 2 | 105 LBS. |

***** SUPPLEMENTAL INFORMATION *****

| DE BRACKET TYPE | ODE BRACKET TYPE | MOUNT TYPE | ORIENTATION | SEVERE DUTY | HAZARDOUS LOCATION | DRIP COVER | SCREENS | PAINT |
|--------------------|---------------------|---------------|-------------|----------------|-----------------------|---------------|---------|------------------|
| C-FACE | STANDARD | RIGID | HORIZONTAL | FALSE | NONE | FALSE | NONE | BLUE (ENAMEL) |

| BEARINGS | | GREASE | SHAFT TYPE | SPECIAL DE | SPECIAL ODE | SHAFT MATERIAL | FRAME MATERIAL |
|----------|------|------------|------------|------------|-------------|----------------------------|-------------------|
| DE | OPE | | | | | | |
| BALL | BALL | POLYREX EM | T | NONE | NONE | 1045 HOT ROLLED (C-204) | ROLLED STEEL |
| 6206 | 6205 | | | | | | |

| THERMO-PROTECTORS | | | | THERMISTORS | CONTROL | SPACE /n HEATERS |
|-------------------|------------|----------|----------|-------------|---------|------------------|
| THERMOSTATS | PROTECTORS | WDG RTDs | BRG RTDs | | | |
| NONE | NOT | NONE | NONE | NONE | FALSE | NONE VOLTS |

If Inverter equals NONE, contact factory for further information

*
N
O
T
E
S
*

| |
|---------------------------|
| INVERTER TORQUE: NONE |
| INV. HP SPEED RANGE: NONE |
| ENCODER: NONE |
| NONE NONE |
| NONE NONE PPR |
| BRAKE: NONE NONE |
| NONE P/N NONE |
| NONE NONE |
| NONE FT-LB NONE V NONE Hz |

DATE: 06/27/2017 02:11:41 AM
 FORM 3531 REV.3 02/07/99
 ** Subject to change without notice.

Data Sheet

Date: 20-06-2017
Customer: _____
Attention: _____
Submitted by: FAREEDA DUDEKULA



182TTFB6078

Submittal

Data @ **460 V**

Motor Load Data

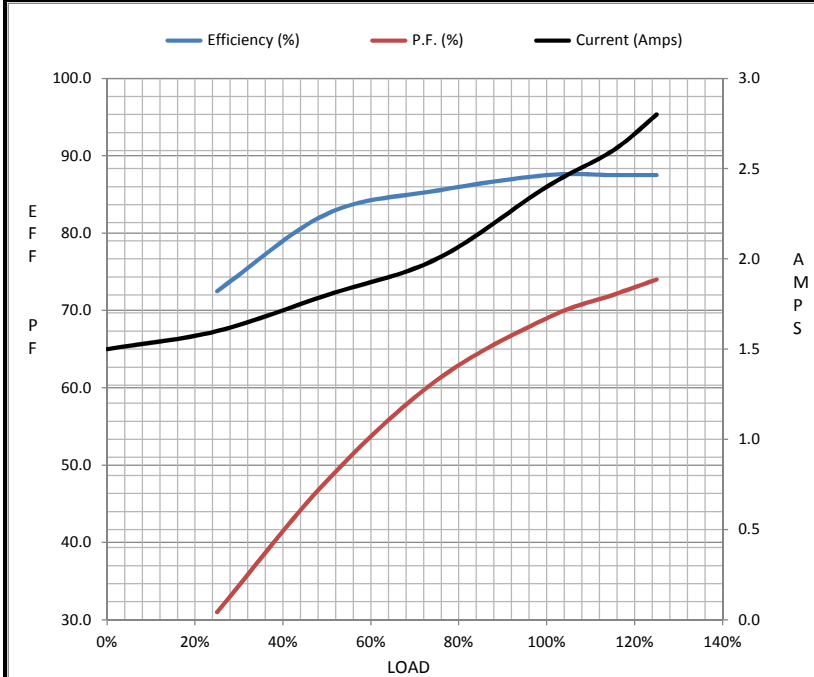
| Load | 0% | 25% | 50% | 75% | 100% | 115% | 125% | LR |
|----------------|------|------|------|------|------|-------|------|------|
| Current (Amps) | 1.50 | 1.60 | 1.80 | 2.00 | 2.40 | 2.60 | 2.80 | 17.0 |
| Torque (ft-lb) | 0.00 | 1.70 | 3.3 | 5.0 | 6.7 | 7.7 | 8.4 | 11.5 |
| RPM | 1200 | 1195 | 1192 | 1188 | 1185 | 1,182 | 1180 | 0 |
| Efficiency (%) | | 72.5 | 82.5 | 85.5 | 87.5 | 87.5 | 87.5 | |
| P.F. (%) | 8.0 | 31.0 | 48.0 | 61.0 | 69.0 | 72.0 | 74.0 | 30.0 |

Motor Speed Data

| | LR | Pull-Up | BD | Rated | Idle |
|----------------|------|---------|------|-------|------|
| Speed (RPM) | 0 | 600 | 1100 | 1185 | 1200 |
| Current (Amps) | 17.0 | 14.0 | 9.5 | 2.40 | 1.50 |
| Torque (ft-lb) | 11.5 | 10.0 | 20.5 | 6.7 | 0.00 |

Information Block

| | | | | |
|-----------------------------|-------------------------|---------|---------|----------|
| HP | 1.5 | | | |
| Sync. RPM | 1200 | | | |
| Frame | 182 | | | |
| Enclosure | TEFC | | | |
| Construction | TFC | | | |
| Voltage | 230/460#190/38(V) | | | |
| Frequency | 60 Hz | | | |
| Design | B | | | |
| LR Code letter | J | | | |
| Service Factor | 1.15 | | | |
| Temp Rise @ FL | 40 ° C | | | |
| Duty | CONT | | | |
| Ambient | 40 ° C | | | |
| Elevation | 1,000 feet | | | |
| Rotor/Shaft wk ² | 0.45 Lb-Ft ² | | | |
| Ref Wdg | CHT18260001 NONE | | | |
| Sound Pressure @ 1M | 55 dBA | | | |
| VFD Rating | NONE | | | |
| Outline Dwg | B-SS620296 | | | |
| Conn. Diag | A-EE7308 | | | |
| Additional Specifications: | | | | |
| 0 | | | | |
| 365THFS8036 | | | | |
| EQUIV CKT (OHMS / PHASE) | | | | |
| R1 | R2 | X1 | X2 | Xm |
| 3.4020 | 1.8900 | 10.7730 | 14.5530 | 172.9350 |



Speed - Torque Curve

