

BALDOR® • RELIANCE 

Product Information Packet

JMEWDM3558T

2HP, 1755RPM, 3PH, 60HZ, 145JM, 3530M, TEFC, F1

| Part Detail | | | | | | | |
|-------------|---------|-------------|------------|-------------|--------|---------------|------------|
| Revision: | M | Status: | PRD/A | Change #: | | Proprietary: | No |
| Type: | AC | Elec. Spec: | 35WGM494 | CD Diagram: | CD0005 | Mfg Plant: | |
| Mech. Spec: | 35SS629 | Layout: | 35LYSS629 | Poles: | 04 | Created Date: | 12-04-2014 |
| Base: | RG | Eff. Date: | 03-10-2020 | Leads: | 9#18 | | |

| Specs | | | |
|---------------------------------|-------------------------|--------------------------------|-----------------|
| Catalog Number: | JMEWDM3558T | Insulation Class: | F |
| Enclosure: | TEFC | Inverter Code: | Inverter Ready |
| Frame: | 145JM | KVA Code: | L |
| Frame Material: | Steel | Lifting Lugs: | No Lifting Lugs |
| Output @ Frequency: | 2.000 HP @ 60 HZ | Locked Bearing Indicator: | Locked Bearing |
| Synchronous Speed @ Frequency: | 1800 RPM @ 60 HZ | Motor Lead Quantity/Wire Size: | 9 @ 18 AWG |
| Voltage @ Frequency: | 460.0 V @ 60 HZ | Motor Lead Exit: | Ko Box |
| | 230.0 V @ 60 HZ | Motor Lead Termination: | Flying Leads |
| XP Class and Group: | None | Motor Type: | 3530M |
| XP Division: | Not Applicable | Mounting Arrangement: | F1 |
| Agency Approvals: | UR | Power Factor: | 73 |
| | CSA EEV | Product Family: | Wash Down |
| | CSA | Pulley End Bearing Type: | Sealed Bearing |
| Auxillary Box: | No Auxillary Box | Pulley Face Code: | C-Face |
| Auxillary Box Lead Termination: | None | Pulley Shaft Indicator: | Tapped & Key |
| Base Indicator: | Rigid | Rodent Screen: | None |
| Bearing Grease Type: | Polyrex EM (-20F +300F) | RoHS Status: | ROHS COMPLIANT |
| Blower: | None | Shaft Extension Location: | Pulley End |

| | | | |
|---------------------------------------|---------------------------|------------------------------------|---------------------|
| Current @ Voltage: | 2.900 A @ 460.0 V | Shaft Ground Indicator: | No Shaft Grounding |
| | 5.800 A @ 230.0 V | Shaft Rotation: | Reversible |
| | 6.000 A @ 208.0 V | Shaft Slinger Indicator: | Shaft Slinger |
| Design Code: | B | Speed Code: | Single Speed |
| Drip Cover: | No Drip Cover | Motor Standards: | NEMA |
| Duty Rating: | CONT | Starting Method: | Direct on line |
| Electrically Isolated Bearing: | Not Electrically Isolated | Thermal Device - Bearing: | None |
| Feedback Device: | NO FEEDBACK | Thermal Device - Winding: | None |
| Front Face Code: | Standard | Vibration Sensor Indicator: | No Vibration Sensor |
| Front Shaft Indicator: | None | Winding Thermal 1: | None |
| Heater Indicator: | No Heater | Winding Thermal 2: | None |

| Nameplate NP1669L | | | | | | | | | | | | |
|-------------------|------------------------|--|--|--|--|------|------|--|----------------|----|-------|---|
| CAT.NO. | JMEWDM3558T | | | | | | | | | | | |
| SPEC. | 35SS629M494G1 | | | | | | | | | | | |
| HP | 2 | | | | | | | | | | | |
| VOLTS | 230/460 | | | | | | | | | | | |
| AMP | 5.8/2.9 | | | | | | | | | | | |
| RPM | 1755 | | | | | | | | | | | |
| FRAME | 145JM | | | | | HZ | 60 | | | PH | 3 | |
| SER.F. | 1.15 | | | | | CODE | L | | DES | B | CLASS | F |
| NEMA-NOM-EFF | 86.5 | | | | | PF | 73 | | | | | |
| RATING | 40C AMB-CONT | | | | | | | | | | | |
| CC | 010A | | | | | | | | USABLE AT 208V | 6 | | |
| DE | 6206 | | | | | ODE | 6203 | | | | | |
| ENCL | TEFC | | | | | SN | | | | | | |
| BLANK | 20:1CT, 20:1VT, 1.00SF | | | | | | | | | | | |

| Parts List | | |
|---------------|--|----------|
| Part Number | Description | Quantity |
| SA290725 | SA 35SS629M494G1 | 1.000 EA |
| RA276881 | RA 35SS629M494G1 | 1.000 EA |
| 34FN3002B01 | EXTERNAL FAN, PLASTIC, .637/.639 HUB W/ | 1.000 EA |
| NS2512A01 | INSULATOR, CONDUIT BOX X | 1.000 EA |
| 35CB3010A01G | 35 CB .75 NPT @ 6:00 (GRAY) | 1.000 EA |
| 35GS1039 | 05 MOLDED GASKET W/LIP, 1.12 LEAD HOLE, | 1.000 EA |
| 51XB1016A08 | 10-16X 1/2HXWSSLD SERTYB | 2.000 EA |
| HA5027A02 | HA4054 T-DRAIN X2 BAGGED WITH LABEL | 1.000 EA |
| 11XW1032G06 | 10-32 X .38, TAPTITE II, HEX WSHR SLTD U | 1.000 EA |
| 35EP3122B00W | MASTER ODE,203 BRG,.683SH,.125NPT DRNS,F | 1.000 EA |
| HA4054 | SHORT T-DRAIN FITTING, .125" N.P.T. | 1.000 EA |
| HW4072A01 | BLACK DRAIN PLUG FOR .125 NPT | 3.000 EA |
| HW4032A01 | BLACK DRAIN PLUG FOR WASH DOWN MOTORS | 3.000 EA |
| 10XN1032SS20 | 10-32 X 1-1/4 HEX HEAD 316 SS | 2.000 EA |
| HW5100A03 | WAVY WASHER (W1543-017) | 1.000 EA |
| 35EP3401T07MW | PU EP FOR SEAL W/"O" DRILLS & NO GRS, W/ | 1.000 EA |
| HA4066A01 | PUSH IN T-DRAIN FITTING (BLACK) | 1.000 EA |
| HW4600B50 | SEAL 1.156 X 1.874 X 0.250 SINGLE LIP DB | 1.000 EA |
| 51XB1214A16 | 12-14X1.00 HXWSSLD SERTYB | 1.000 EA |
| 35FH4005A32SP | IEC FH NO GRSR W/3 HOLES - PRIMED | 1.000 EA |
| 11XW1032S06 | 10-32 X .38, TAPTITE II, HEX WSHR SLTD U | 3.000 EA |
| HW4600B39SP | V-RING SLINGER 0.550 X 0.790 X .18 VITON | 1.000 EA |
| HW4600B36SP | V-RING SLINGER 1.188 X 1.690 X .24 VITON | 1.000 EA |
| 35CB4522 | 35 LIPPED CB LID PRIMED | 1.000 EA |

| Parts List (continued) | | |
|-------------------------------|--|-----------------|
| Part Number | Description | Quantity |
| 35GS1030A02 | 35 GS FOR CB LID - WHITE NEOPRENE | 1.000 EA |
| 59XW0832S07 | TAPTITE II,HEX WSHR UNSLTD SER,410 S.S., | 4.000 EA |
| HW2502D13 | SS KEY, 3/16 SQ X 1.375 | 1.000 EA |
| HA7000A01 | KEY RETAINER 7/8" DIA SHAFT | 1.000 EA |
| MJ5001A27 | 32220KN GRAY SEALER *MIN BUY 4 QTS=1GAL | 0.001 QT |
| LB1164 | LABEL,WARNING AND DRAIN | 1.000 EA |
| 85XU0407S04 | 4X1/4 U DRIVE PIN STAINLESS | 2.000 EA |
| MJ1000A02 | GREASE, MOBIL POLYREX EM - 124047 | 0.050 LB |
| MG1025Z02 | ACTIVATOR WILKOFAS 060.02HF | 0.010 GA |
| MG1025W01 | WILKOFAS 781.01, SIGNAL WHITE #9003 | 0.017 GA |
| HA3100S09 | THRUBOLT 9.25 LENGTH SS | 4.000 EA |
| LC0005 | CONN.DIA.,TY M,9-LD,DUAL VOLT,REVERSING | 1.000 EA |
| MN416A01 | TAG-INSTAL-MAINT no wire (2100/bx) 4/22 | 1.000 EA |
| NP1669L | SS WD SUPER-E UL CSA-EEV PREM REV MTG | 1.000 EA |
| 36PA1000 | PKG GRP, PRINT PK1016A06 | 1.000 EA |
| FE-0000001 | ZRTG FE ASSEMBLY | 1.000 EA |

AC Induction Motor Performance Data

Record # 53333

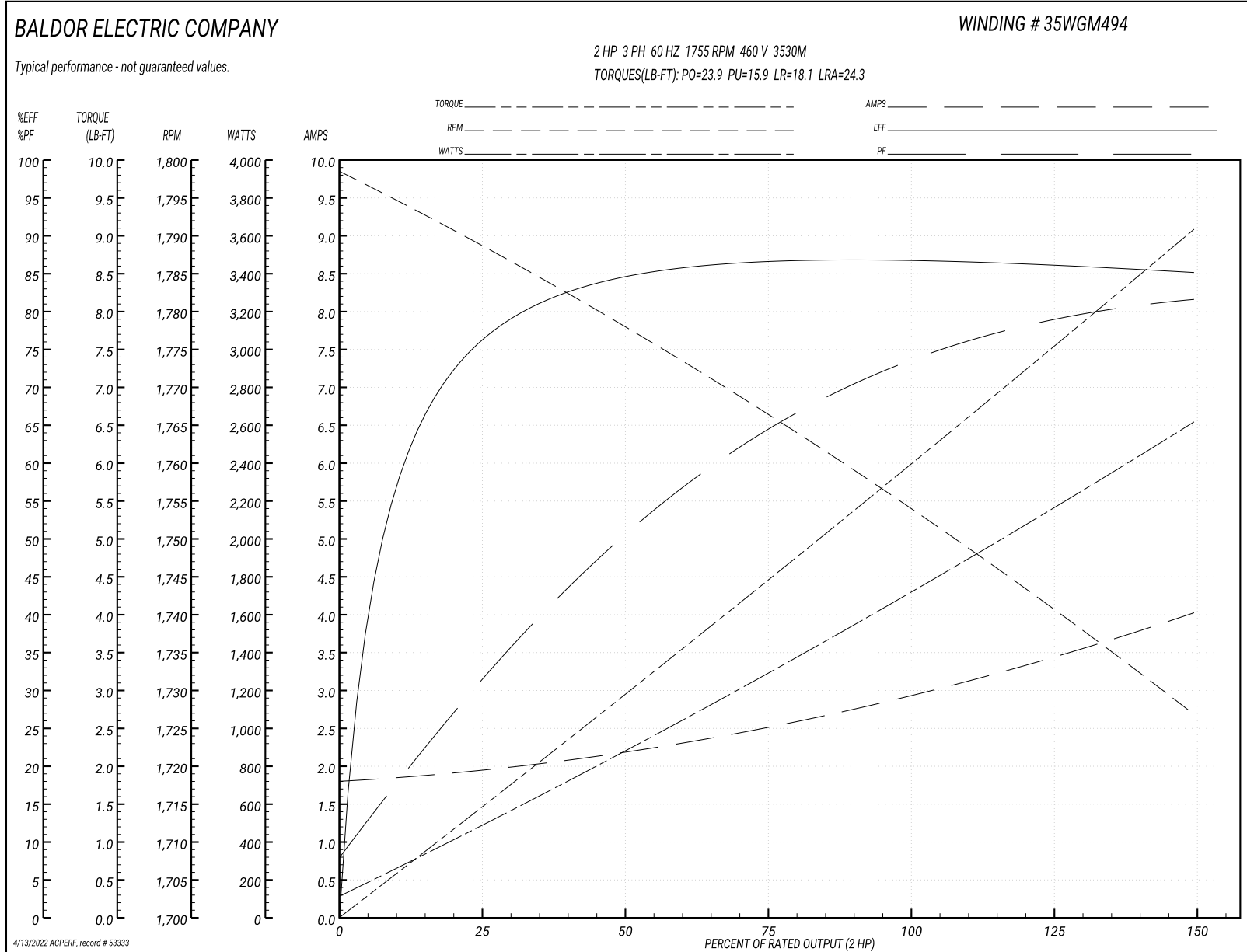
Typical performance - not guaranteed values

| Winding: 35WGM494-R078 | | Type: 3530M | | Enclosure: TEFC | |
|-------------------------------|-------------------|----------------------------|--|------------------------------|--------|
| Nameplate Data | | | 460 V, 60 Hz: High Voltage Connection | | |
| Rated Output (HP) | 2 | Full Load Torque | 5.99 LB-FT | | |
| Volts | 230/460 | Start Configuration | direct on line | | |
| Full Load Amps | 5.8/2.9 | Breakdown Torque | 23.9 LB-FT | | |
| R.P.M. | 1755 | Pull-up Torque | 15.9 LB-FT | | |
| Hz | 60 Phase | 3 | Locked-rotor Torque | 18.1 LB-FT | |
| NEMA Design Code | B KVA Code | L | Starting Current | 24.3 A | |
| Service Factor (S.F.) | 1.15 | | No-load Current | 1.82 A | |
| NEMA Nom. Eff. | 86.5 | Power Factor | 73 | Line-line Res. @ 25°C | 7.46 Ω |
| Rating - Duty | 40C AMB-CONT | | Temp. Rise @ Rated Load | 61°C | |
| S.F. Amps | | | Temp. Rise @ S.F. Load | 74°C | |
| | | | Locked-rotor Power Factor | 50 | |
| | | | Rotor inertia | 0.177 LB-FT ² | |

Load Characteristics 460 V, 60 Hz, 2 HP

| % of Rated Load | 25 | 50 | 75 | 100 | 125 | 150 | S.F. |
|------------------------|-----------|-----------|-----------|------------|------------|------------|-------------|
| Power Factor | 32 | 51 | 64 | 73 | 79 | 82 | 77 |
| Efficiency | 75.7 | 84.2 | 86.4 | 87.3 | 86.2 | 85.1 | 86.4 |
| Speed | 1788.5 | 1778 | 1766.7 | 1754.5 | 1740.8 | 1726.6 | 1746 |
| Line amperes | 1.92 | 2.17 | 2.51 | 2.94 | 3.46 | 4.01 | 3.25 |

Performance Graph at 460V, 60Hz, 2.0HP Typical performance - Not guaranteed values



AC Induction Motor Performance Data

Record # 64712

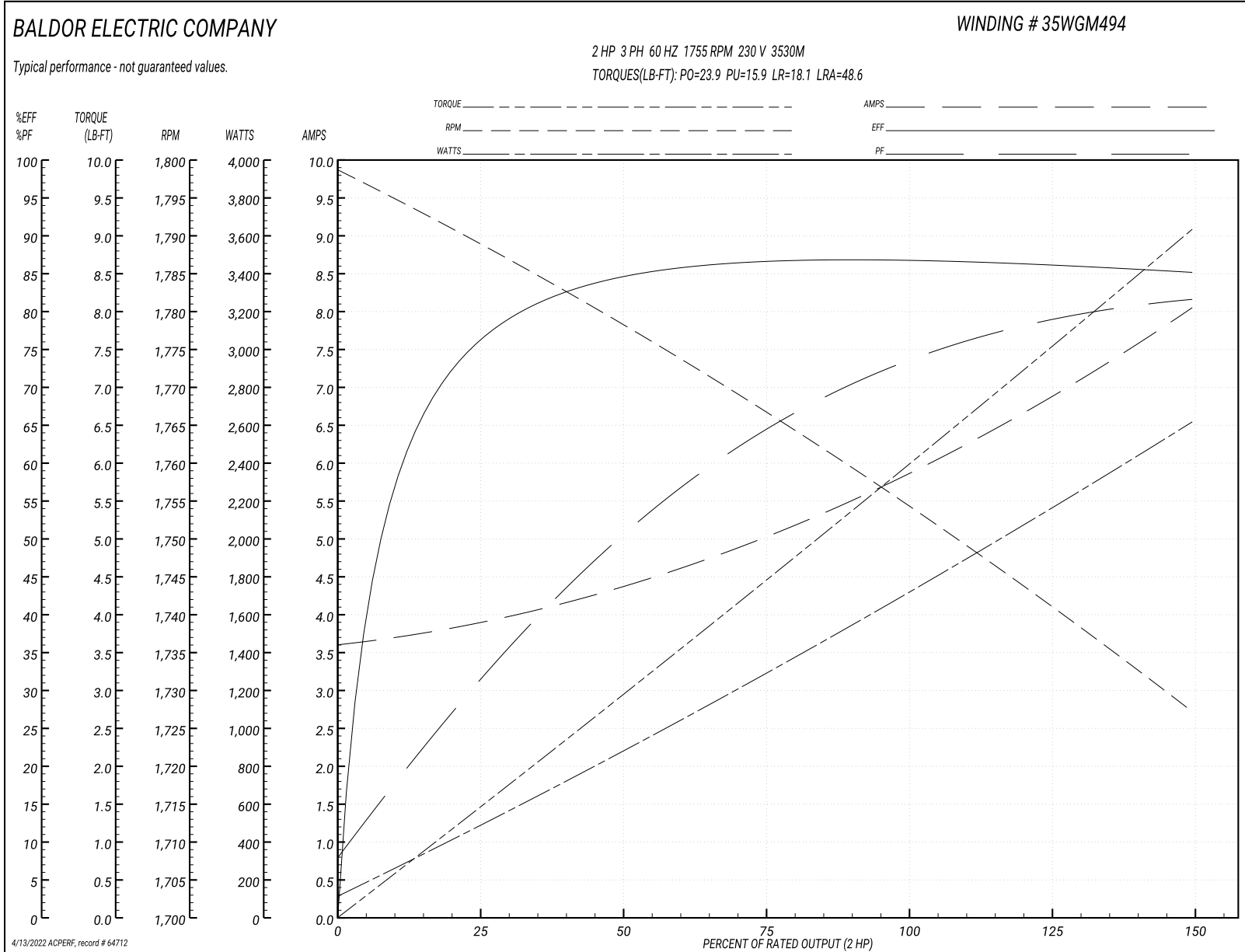
Typical performance - not guaranteed values

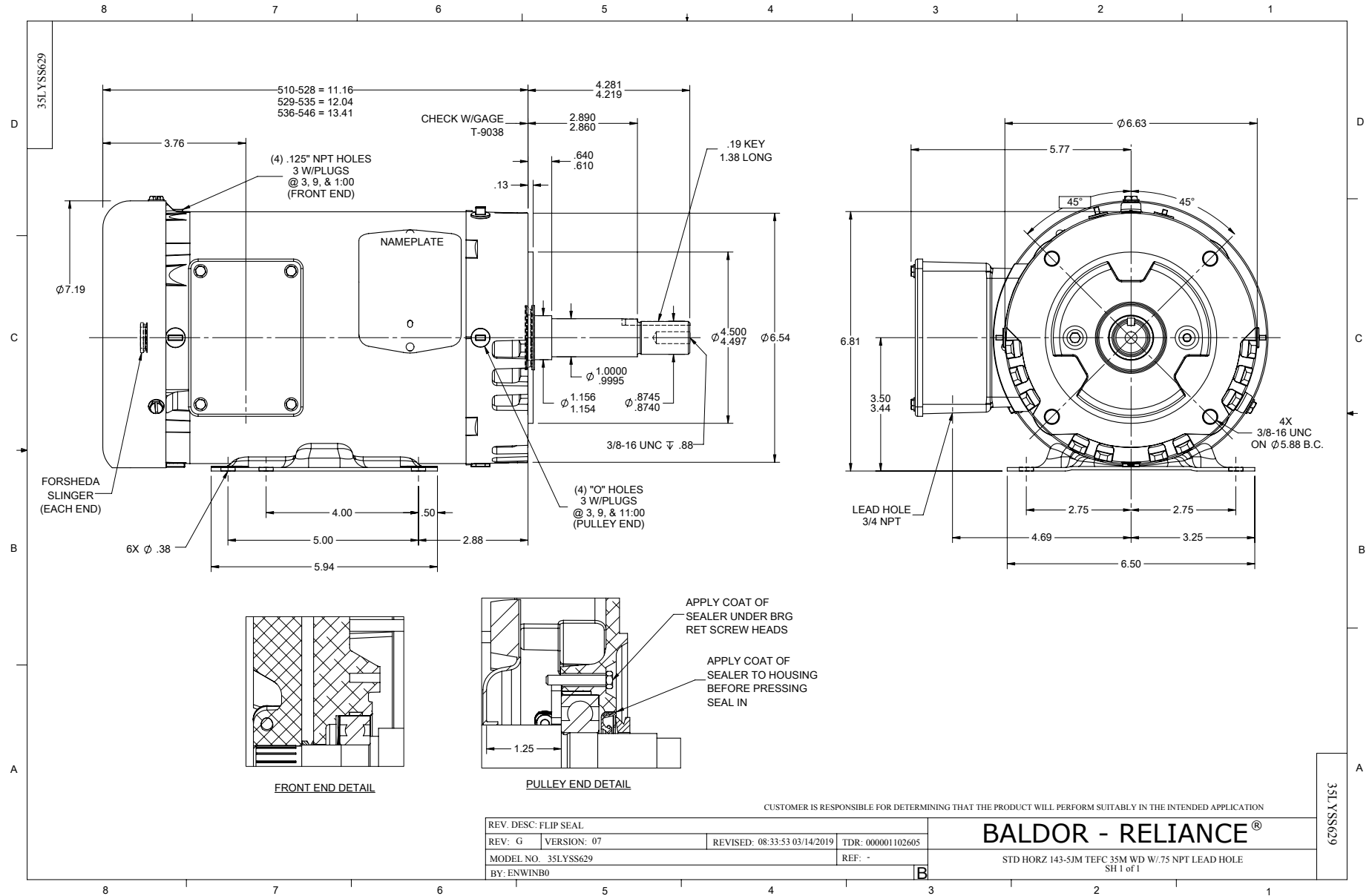
| Winding: 35WGM494-R078 | | Type: 3530M | | Enclosure: TEFC | |
|-------------------------------|-------------------|----------------------------------|---|------------------------------|--------|
| Nameplate Data | | | 230 V, 60 Hz: Low Voltage Connection | | |
| Rated Output (HP) | 2 | Full Load Torque | 5.99 LB-FT | | |
| Volts | 230/460 | Start Configuration | direct on line | | |
| Full Load Amps | 5.8/2.9 | Breakdown Torque | 23.9 LB-FT | | |
| R.P.M. | 1755 | Pull-up Torque | 15.9 LB-FT | | |
| Hz | 60 Phase | 3 | Locked-rotor Torque | 18.1 LB-FT | |
| NEMA Design Code | B KVA Code | L | Starting Current | 48.6 A | |
| Service Factor (S.F.) | 1.15 | No-load Current | 3.64 A | | |
| NEMA Nom. Eff. | 86.5 | Power Factor | 73 | Line-line Res. @ 25°C | 1.75 Ω |
| Rating - Duty | 40C AMB-CONT | Temp. Rise @ Rated Load | 61°C | | |
| S.F. Amps | | Temp. Rise @ S.F. Load | 72°C | | |
| | | Locked-rotor Power Factor | 50.1 | | |
| | | Rotor inertia | 0.177 LB-FT ² | | |

Load Characteristics 230 V, 60 Hz, 2 HP

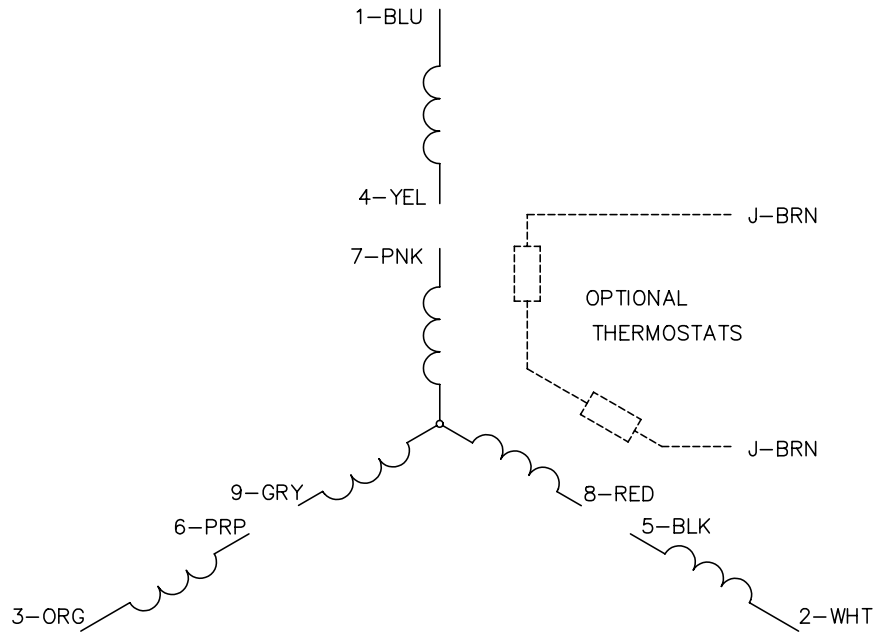
| % of Rated Load | 25 | 50 | 75 | 100 | 125 | 150 | S.F. |
|------------------------|-----------|-----------|-----------|------------|------------|------------|-------------|
| Power Factor | 32 | 51 | 64 | 73 | 79 | 82 | 77 |
| Efficiency | 75.4 | 84 | 86.4 | 87.2 | 86.1 | 85 | 86.5 |
| Speed | 1789 | 1778 | 1767 | 1755 | 1741 | 1727 | 1747 |
| Line amperes | 3.84 | 4.34 | 5.02 | 5.88 | 6.92 | 8.02 | 6.5 |

Performance Graph at 230V, 60Hz, 2.0HP Typical performance - Not guaranteed values

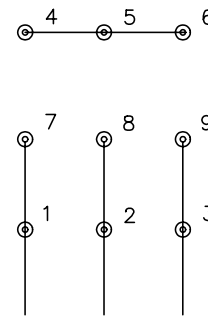




CD0005

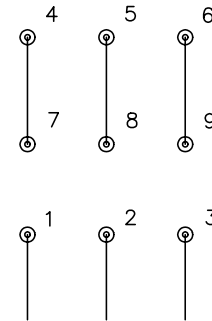


LOW VOLTAGE
(2Y)



LINE

HIGH VOLTAGE
(1Y)



LINE

NOTES:

1. INTERCHANGE ANY TWO LINE LEADS TO REVERSE ROTATION.
2. OPTIONAL THERMOSTATS ARE PROVIDED WHEN SPECIFIED.
3. ACTUAL NUMBER OF INTERNAL PARALLEL CIRCUITS MAY BE A MULTIPLE OF THOSE SHOWN ABOVE.
4. LEAD COLORS ARE OPTIONAL. LEADS MUST ALWAYS BE NUMBERED AS SHOWN.

| | | | |
|---|---------|-------------------------|--------------|
| REV. DESC: REVISE TO SHOW OPTIONAL COLORS | | | |
| REV. LTR: E | BY: JLP | REVISED: 01/19/99 10:15 | TDR: 0171435 |
| 9000D | | FILE: AAA00005140 | MDL: - |
| | | MTL: - | |

BALDOR ELECTRIC Co.

3PH, DV, 9 LEADS

CD0005