

**BALDOR® • RELIANCE** 

**Product Information Packet**

**JMEWDM3713T**

**15HP,3500RPM,3PH,60HZ,215JM,3752M,TEFC,F**

| Part Detail |        |             |            |             |        |               |            |
|-------------|--------|-------------|------------|-------------|--------|---------------|------------|
| Revision:   | K      | Status:     | PRD/A      | Change #:   |        | Proprietary:  | No         |
| Type:       | AC     | Elec. Spec: | 37WGR228   | CD Diagram: | CD0180 | Mfg Plant:    |            |
| Mech. Spec: | 37N673 | Layout:     | 37LYN673   | Poles:      | 02     | Created Date: | 04-10-2015 |
| Base:       | RG     | Eff. Date:  | 07-24-2020 | Leads:      | 9#14   |               |            |

| Specs                           |                         |                                |                       |
|---------------------------------|-------------------------|--------------------------------|-----------------------|
| Catalog Number:                 | JMEWDM3713T             | Insulation Class:              | F                     |
| Enclosure:                      | TEFC                    | Inverter Code:                 | Inverter Ready        |
| Frame:                          | 215JM                   | KVA Code:                      | J                     |
| Frame Material:                 | Steel                   | Lifting Lugs:                  | Standard Lifting Lugs |
| Output @ Frequency:             | 15.000 HP @ 60 HZ       | Locked Bearing Indicator:      | Locked Bearing        |
| Synchronous Speed @ Frequency:  | 3600 RPM @ 60 HZ        | Motor Lead Quantity/Wire Size: | 9 @ 14 AWG            |
| Voltage @ Frequency:            | 460.0 V @ 60 HZ         | Motor Lead Exit:               | Ko Box                |
|                                 | 230.0 V @ 60 HZ         | Motor Lead Termination:        | Flying Leads          |
| XP Class and Group:             | None                    | Motor Type:                    | 3752M                 |
| XP Division:                    | Not Applicable          | Mounting Arrangement:          | F1                    |
| Agency Approvals:               | UR                      | Power Factor:                  | 89                    |
|                                 | CSA EEV                 | Product Family:                | Wash Down             |
|                                 | CSA                     | Pulley End Bearing Type:       | Sealed Bearing        |
| Auxillary Box:                  | No Auxillary Box        | Pulley Face Code:              | C-Face                |
| Auxillary Box Lead Termination: | None                    | Pulley Shaft Indicator:        | Standard              |
| Base Indicator:                 | Rigid                   | Rodent Screen:                 | None                  |
| Bearing Grease Type:            | Polyrex EM (-20F +300F) | RoHS Status:                   | ROHS COMPLIANT        |
| Blower:                         | None                    | Shaft Extension Location:      | Pulley End            |

|                                       |                           |                                    |                     |
|---------------------------------------|---------------------------|------------------------------------|---------------------|
| <b>Current @ Voltage:</b>             | 17.000 A @ 460.0 V        | <b>Shaft Ground Indicator:</b>     | No Shaft Grounding  |
|                                       | 34.000 A @ 230.0 V        | <b>Shaft Rotation:</b>             | Reversible          |
|                                       | 36.800 A @ 208.0 V        | <b>Shaft Slinger Indicator:</b>    | Shaft Slinger       |
| <b>Design Code:</b>                   | A                         | <b>Speed Code:</b>                 | Single Speed        |
| <b>Drip Cover:</b>                    | No Drip Cover             | <b>Motor Standards:</b>            | NEMA                |
| <b>Duty Rating:</b>                   | CONT                      | <b>Starting Method:</b>            | Direct on line      |
| <b>Electrically Isolated Bearing:</b> | Not Electrically Isolated | <b>Thermal Device - Bearing:</b>   | None                |
| <b>Feedback Device:</b>               | NO FEEDBACK               | <b>Thermal Device - Winding:</b>   | None                |
| <b>Front Face Code:</b>               | Standard                  | <b>Vibration Sensor Indicator:</b> | No Vibration Sensor |
| <b>Front Shaft Indicator:</b>         | None                      | <b>Winding Thermal 1:</b>          | None                |
| <b>Heater Indicator:</b>              | No Heater                 | <b>Winding Thermal 2:</b>          | None                |

| Nameplate NP1669L |                        |  |      |     |                |      |  |       |    |   |
|-------------------|------------------------|--|------|-----|----------------|------|--|-------|----|---|
| CAT.NO.           | JMEWDM3713T            |  |      |     |                |      |  |       |    |   |
| SPEC.             | 37N673R228G1           |  |      |     |                |      |  |       |    |   |
| HP                | 15                     |  |      |     |                |      |  |       |    |   |
| VOLTS             | 230/460                |  |      |     |                |      |  |       |    |   |
| AMP               | 34/17                  |  |      |     |                |      |  |       |    |   |
| RPM               | 3500                   |  |      |     |                |      |  |       |    |   |
| FRAME             | 215JM                  |  |      |     | HZ             | 60   |  |       | PH | 3 |
| SER.F.            | 1.15                   |  | CODE | J   | DES            | A    |  | CLASS | F  |   |
| NEMA-NOM-EFF      | 91                     |  | PF   | 89  |                |      |  |       |    |   |
| RATING            | 40C AMB-CONT           |  |      |     |                |      |  |       |    |   |
| CC                | 010A                   |  |      |     | USABLE AT 208V | 36.8 |  |       |    |   |
| DE                | 6307                   |  |      | ODE | 6206           |      |  |       |    |   |
| ENCL              | TEFC                   |  | SN   |     |                |      |  |       |    |   |
| BLANK             | 10:1CT, 20:1VT, 1.00SF |  |      |     |                |      |  |       |    |   |

| Parts List    |  |          |
|---------------|--|----------|
| Part Number   | Description                              | Quantity |
| SA299079      | SA 37N673R228G1                          | 1.000 EA |
| RA286059      | RA 37N673R228G1                          | 1.000 EA |
| 37FN3002B01   | EXFN, PLASTIC, 7.50 OD, 1.155 ID         | 1.000 EA |
| HW3200A01     | 3/8-16X3/4 I-BLT WELDED F/S              | 1.000 EA |
| 37CB3005A04W  | CASTING W/.75 NPT@6(MACH WHITE)          | 1.000 EA |
| 37GS1025      | 37 MOLDED GASKET W/LIP, LEAD SEAL        | 1.000 EA |
| 51XW2520A12   | .25-20 X .75, TAPTITE II, HEX WSHR SLTD  | 2.000 EA |
| 11XW1032G06   | 10-32 X .38, TAPTITE II, HEX WSHR SLTD U | 1.000 EA |
| 37EP3101A94MW | FRONT TEFC L&M 206 BRG W/O GRSSR (WHITE) | 1.000 EA |
| HW4032A01     | BLACK DRAIN PLUG FOR WASH DOWN MOTORS    | 3.000 EA |
| HW5100A06     | W2420-025 WVY WSHR (WB)                  | 1.000 EA |
| 37EP3300A23MW | WHITE EPOXY EP MACH COMPL                | 1.000 EA |
| HW4032A01     | BLACK DRAIN PLUG FOR WASH DOWN MOTORS    | 3.000 EA |
| HW4600B51     | SEAL 1.375 X 2.125 X 0.313 SINGLE LIP DB | 1.000 EA |
| 10XN2520S30   | 1/4-20 X 1 7/8 HEX HEAD SS               | 4.000 EA |
| XY3118S12     | 5/16-18 HEX NUT, STAINLESS STEEL         | 4.000 EA |
| 07FH4011      | WASHDOWN IEC FH W/PRIMED                 | 1.000 EA |
| 11XW1032S06   | 10-32 X .38, TAPTITE II, HEX WSHR SLTD U | 3.000 EA |
| HW4600B74     | V-RING SLINGER 1.125 X 1.445 X .24 VITON | 1.000 EA |
| HW4600B31SP   | V-RING SLINGER 1.438 X 1.758 X .24 VITON | 1.000 EA |
| 37CB4512      | CONDUIT BOX LID FOR WASHDOWN 37 FRAME    | 1.000 EA |
| 37GS1008A02   | 37 GS FOR CB LID - WHITE NEOPRENE        | 1.000 EA |
| 59XW0832S07   | TAPTITE II,HEX WSHR UNSLTD SER,410 S.S., | 4.000 EA |
| HA3104S18     | THRUBOLT 5/16-18X14 SS                   | 4.000 EA |

| <b>Parts List (continued)</b> |  |                 |
|-------------------------------|--|-----------------|
| <b>Part Number</b>            | <b>Description</b>                       | <b>Quantity</b> |
| HW2502D13                     | SS KEY, 3/16 SQ X 1.375                  | 1.000 EA        |
| HA7000A01                     | KEY RETAINER 7/8" DIA SHAFT              | 1.000 EA        |
| MJ5001A27                     | 32220KN GRAY SEALER *MIN BUY 4 QTS=1GAL  | 0.001 QT        |
| MJ5001A02                     | 732 CL SEALANT 3 OZ DIXIE BEARING 289100 | 0.001 EA        |
| 85XU0407S04                   | 4X1/4 U DRIVE PIN STAINLESS              | 2.000 EA        |
| LB1115N                       | LABEL,LIFTING DEVICE (ON ROLLS)          | 1.000 EA        |
| LB1164                        | LABEL,WARNING AND DRAIN                  | 1.000 EA        |
| HA5027A01                     | HA4066A01 T-DRAIN X2 BAGGED              | 1.000 EA        |
| MJ1000A02                     | GREASE, MOBIL POLYREX EM - 124047        | 0.050 LB        |
| MG1025Z02                     | ACTIVATOR WILKOFAS 060.02HF              | 0.010 GA        |
| MG1025W01                     | WILKOFAS 781.01, SIGNAL WHITE #9003      | 0.028 GA        |
| LC0181                        | CONNECTION LABEL                         | 1.000 EA        |
| NP1669L                       | SS WD SUPER-E UL CSA-EEV PREM REV MTG    | 1.000 EA        |
| 37PA1074                      | PALLET PACK GRP, PRINT BOX PK1026A06     | 1.000 EA        |
| MN416A01                      | TAG-INSTAL-MAINT no wire (2100/bx) 4/22  | 1.000 EA        |

**AC Induction Motor Performance Data**

Record # 53380

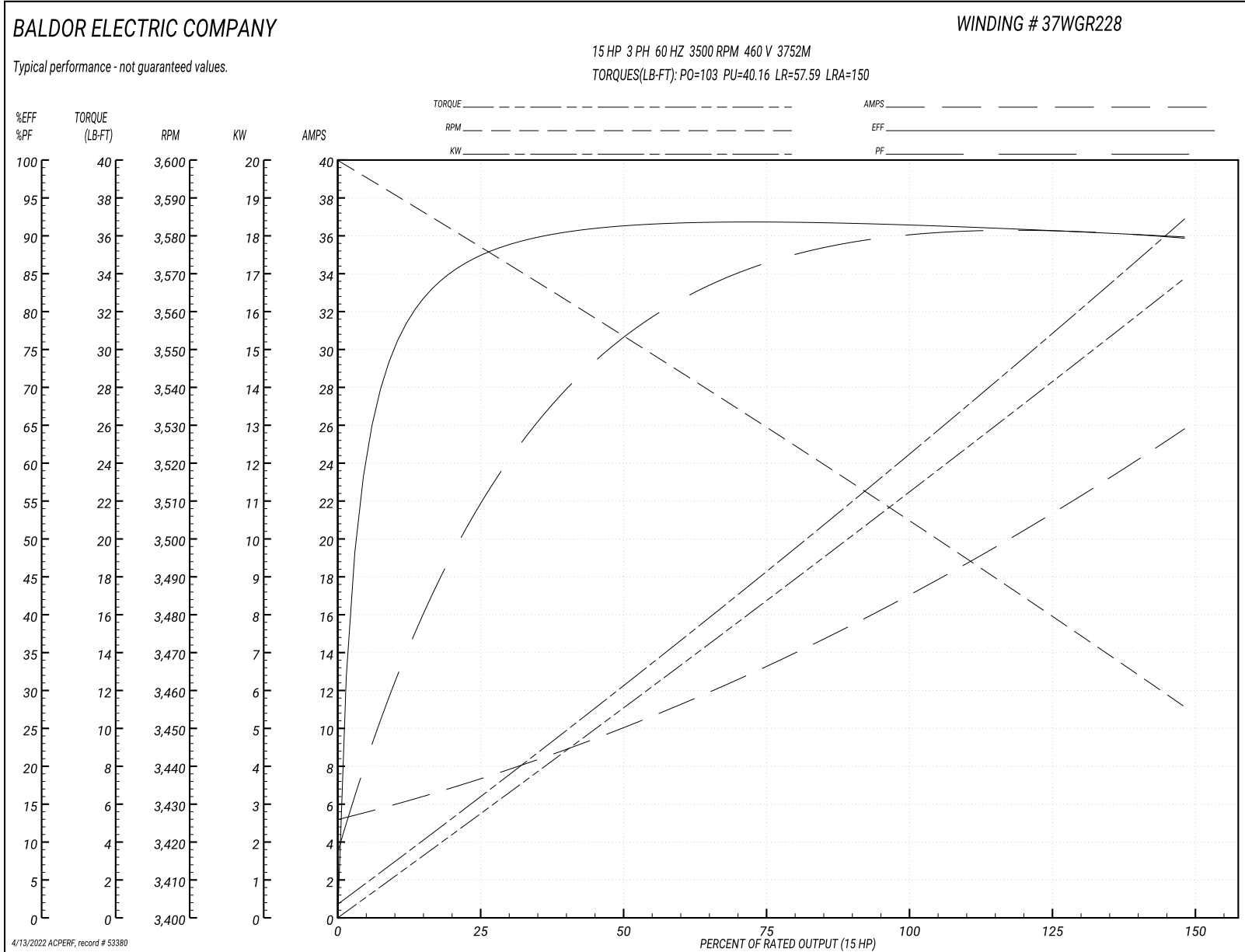
Typical performance - not guaranteed values

| <b>Winding: 37WGR228-R023</b> |                        | <b>Type: 3752M</b>               |  | <b>Enclosure: TEFC</b> |  |
|-------------------------------|------------------------|----------------------------------|--|------------------------|--|
| <b>Nameplate Data</b>         |                        |                                  | <b>460 V, 60 Hz:<br/>High Voltage Connection</b> |                        |  |
| <b>Rated Output (HP)</b>      | 15                     | <b>Full Load Torque</b>          | 22.12 LB-FT                                      |                        |  |
| <b>Volts</b>                  | 230/460                | <b>Start Configuration</b>       | direct on line                                   |                        |  |
| <b>Full Load Amps</b>         | 34/17                  | <b>Breakdown Torque</b>          | 103 LB-FT  |                        |  |
| <b>R.P.M.</b>                 | 3500                   | <b>Pull-up Torque</b>            | 40.16 LB-FT                                      |                        |  |
| <b>Hz</b>                     | 60 <b>Phase</b>        | 3                                | <b>Locked-rotor Torque</b>                       | 57.59 LB-FT            |  |
| <b>NEMA Design Code</b>       | A <b>KVA Code</b>      | J                                | <b>Starting Current</b>                          | 150 A                  |  |
| <b>Service Factor (S.F.)</b>  | 1.15                   | <b>No-load Current</b>           | 5.55 A   |                        |  |
| <b>NEMA Nom. Eff.</b>         | 91 <b>Power Factor</b> | 89                               | <b>Line-line Res. @ 25°C</b>                     | 0.47 Ω                 |  |
| <b>Rating - Duty</b>          | 40C AMB-CONT           | <b>Temp. Rise @ Rated Load</b>   | 68°C   |                        |  |
| <b>S.F. Amps</b>              |                        | <b>Temp. Rise @ S.F. Load</b>    | 79°C   |                        |  |
|                               |                        | <b>Locked-rotor Power Factor</b> | 30.9   |                        |  |
|                               |                        | <b>Rotor inertia</b>             | 0.474 LB-FT <sup>2</sup>                         |                        |  |

**Load Characteristics 460 V, 60 Hz, 15 HP**

| <b>% of Rated Load</b> | <b>25</b> | <b>50</b> | <b>75</b> | <b>100</b> | <b>125</b> | <b>150</b> | <b>S.F.</b> |
|------------------------|-----------|-----------|-----------|------------|------------|------------|-------------|
| <b>Power Factor</b>    | 56        | 78        | 85        | 89         | 90         | 90         | 89          |
| <b>Efficiency</b>      | 86.8      | 91        | 91.9      | 91.4       | 90.8       | 89.8       | 91.3        |
| <b>Speed</b>           | 3579      | 3557      | 3534      | 3500       | 3484       | 3456       | 3495        |
| <b>Line amperes</b>    | 6.7       | 9.57      | 13.19     | 17.03      | 21.12      | 25.61      | 19.5        |

Performance Graph at 460V, 60Hz, 15.0HP Typical performance - Not guaranteed values





**AC Induction Motor Performance Data**

Record # 57899

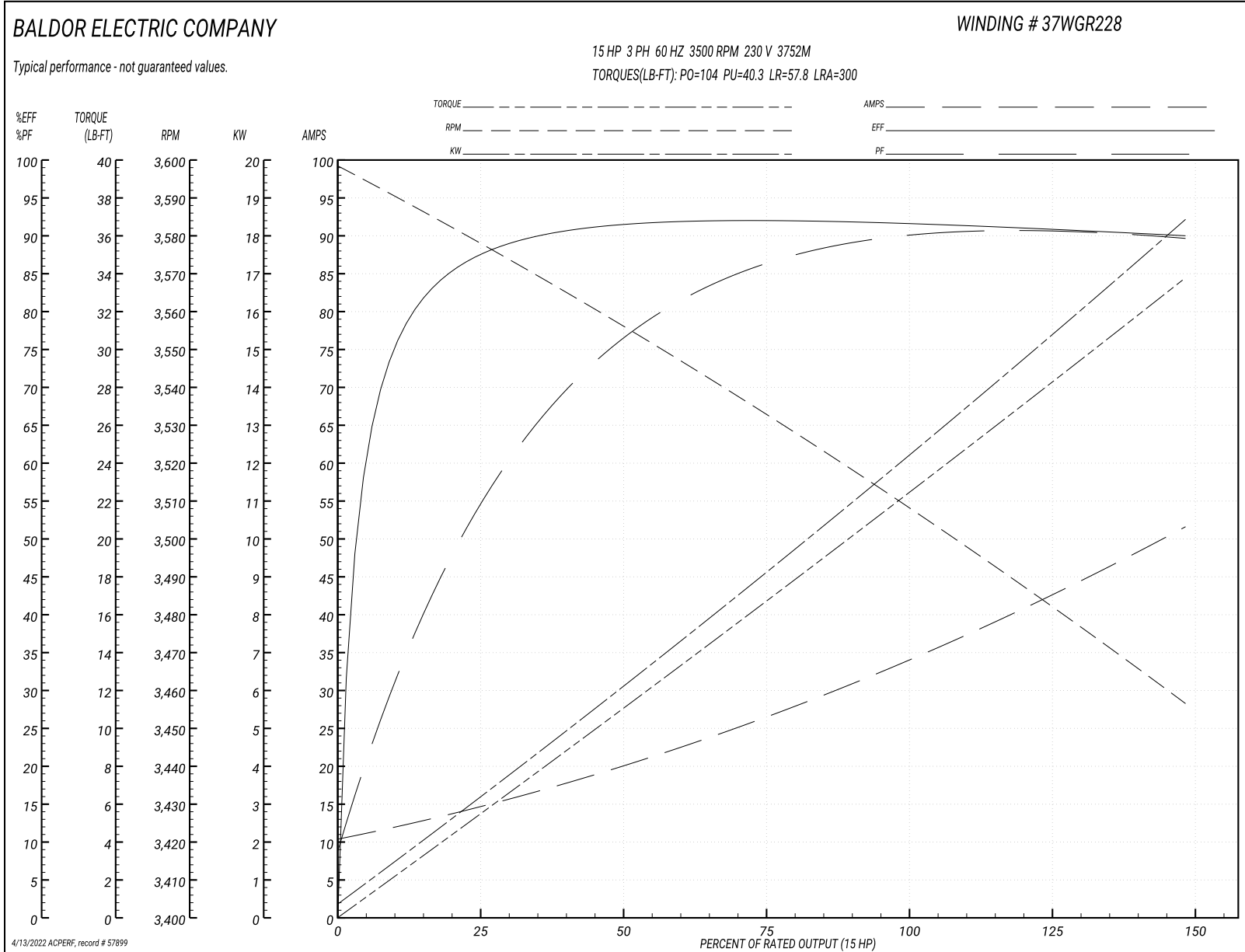
Typical performance - not guaranteed values

| <b>Winding: 37WGR228-R023</b> |                        | <b>Type: 3752M</b>               |   | <b>Enclosure: TEFC</b> |  |
|-------------------------------|------------------------|----------------------------------|---|------------------------|--|
| <b>Nameplate Data</b>         |                        |                                  | <b>230 V, 60 Hz:<br/>Low Voltage Connection</b> |                        |  |
| <b>Rated Output (HP)</b>      | 15                     | <b>Full Load Torque</b>          | 22.1 LB-FT                                      |                        |  |
| <b>Volts</b>                  | 230/460                | <b>Start Configuration</b>       | direct on line                                  |                        |  |
| <b>Full Load Amps</b>         | 34/17                  | <b>Breakdown Torque</b>          | 104 LB-FT                                       |                        |  |
| <b>R.P.M.</b>                 | 3500                   | <b>Pull-up Torque</b>            | 40.3 LB-FT                                      |                        |  |
| <b>Hz</b>                     | 60 <b>Phase</b>        | 3                                | <b>Locked-rotor Torque</b>                      | 57.8 LB-FT             |  |
| <b>NEMA Design Code</b>       | A <b>KVA Code</b>      | J                                | <b>Starting Current</b>                         | 300 A                  |  |
| <b>Service Factor (S.F.)</b>  | 1.15                   | <b>No-load Current</b>           | 11.1 A  |                        |  |
| <b>NEMA Nom. Eff.</b>         | 91 <b>Power Factor</b> | 89                               | <b>Line-line Res. @ 25°C</b>                    | 0.111 Ω                |  |
| <b>Rating - Duty</b>          | 40C AMB-CONT           | <b>Temp. Rise @ Rated Load</b>   | 67°C  |                        |  |
| <b>S.F. Amps</b>              |                        | <b>Temp. Rise @ S.F. Load</b>    | 82°C  |                        |  |
|                               |                        | <b>Locked-rotor Power Factor</b> | 30.3  |                        |  |
|                               |                        | <b>Rotor inertia</b>             | 0.474 LB-FT <sup>2</sup>                        |                        |  |

**Load Characteristics 230 V, 60 Hz, 15 HP**

| <b>% of Rated Load</b> | <b>25</b> | <b>50</b> | <b>75</b> | <b>100</b> | <b>125</b> | <b>150</b> | <b>S.F.</b> |
|------------------------|-----------|-----------|-----------|------------|------------|------------|-------------|
| <b>Power Factor</b>    | 56        | 77        | 85        | 89         | 90         | 90         | 90          |
| <b>Efficiency</b>      | 86.8      | 91.1      | 92        | 91.8       | 91         | 90         | 91.3        |
| <b>Speed</b>           | 3579      | 3558      | 3534      | 3510       | 3485       | 3456       | 3495        |
| <b>Line amperes</b>    | 13.4      | 19.1      | 26.4      | 34         | 42.2       | 51.2       | 38.9        |

Performance Graph at 230V, 60Hz, 15.0HP Typical performance - Not guaranteed values



**AC Induction Motor Performance Data**

Record # 70097

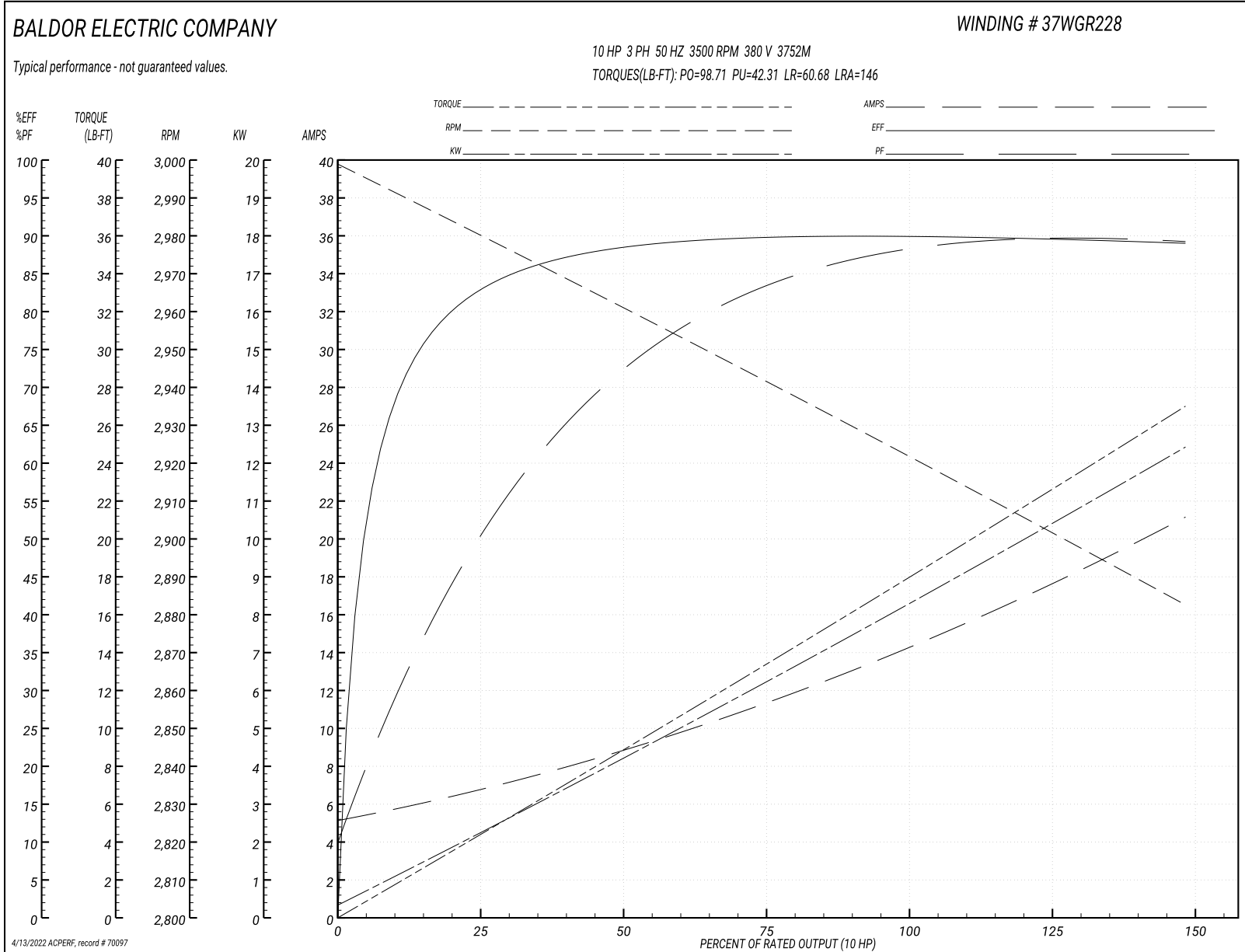
Typical performance - not guaranteed values

| <b>Winding: 37WGR228-RXXX</b> |                        | <b>Type: 3752M</b>               |  | <b>Enclosure: TEFC</b> |  |
|-------------------------------|------------------------|----------------------------------|--|------------------------|--|
| <b>Nameplate Data</b>         |                        |                                  | <b>380 V, 50 Hz:<br/>High Voltage Connection</b> |                        |  |
| <b>Rated Output (HP)</b>      | 15                     | <b>Full Load Torque</b>          | 17.68 LB-FT                                      |                        |  |
| <b>Volts</b>                  | 230/460                | <b>Start Configuration</b>       | direct on line                                   |                        |  |
| <b>Full Load Amps</b>         | 34/17                  | <b>Breakdown Torque</b>          | 98.71 LB-FT                                      |                        |  |
| <b>R.P.M.</b>                 | 3500                   | <b>Pull-up Torque</b>            | 42.31 LB-FT                                      |                        |  |
| <b>Hz</b>                     | 60 <b>Phase</b>        | 3                                | <b>Locked-rotor Torque</b>                       | 60.68 LB-FT            |  |
| <b>NEMA Design Code</b>       | A <b>KVA Code</b>      | J                                | <b>Starting Current</b>                          | 146 A                  |  |
| <b>Service Factor (S.F.)</b>  | 1.15                   | <b>No-load Current</b>           | 5.43 A   |                        |  |
| <b>NEMA Nom. Eff.</b>         | 91 <b>Power Factor</b> | 89                               | <b>Line-line Res. @ 25°C</b>                     | 0.47 Ω                 |  |
| <b>Rating - Duty</b>          | 40C AMB-CONT           | <b>Temp. Rise @ Rated Load</b>   | 52°C   |                        |  |
| <b>S.F. Amps</b>              |                        | <b>Temp. Rise @ S.F. Load</b>    | 63°C   |                        |  |
|                               |                        | <b>Locked-rotor Power Factor</b> | 34.6   |                        |  |
|                               |                        | <b>Rotor inertia</b>             | 0.474 LB-FT <sup>2</sup>                         |                        |  |

**Load Characteristics 380 V, 50 Hz, 10 HP**

| <b>% of Rated Load</b> | <b>25</b> | <b>50</b> | <b>75</b> | <b>100</b> | <b>125</b> | <b>150</b> | <b>S.F.</b> |
|------------------------|-----------|-----------|-----------|------------|------------|------------|-------------|
| <b>Power Factor</b>    | 51        | 73        | 82        | 87         | 89         | 90         | 88          |
| <b>Efficiency</b>      | 81.7      | 88        | 89.8      | 89.9       | 89.6       | 88.9       | 89.7        |
| <b>Speed</b>           | 2982      | 2964      | 2945      | 2918       | 2905       | 2883       | 2910        |
| <b>Line amperes</b>    | 6.27      | 8.45      | 11.29     | 14.27      | 17.46      | 20.98      | 16.2        |

Performance Graph at 380V, 50Hz, 10.0HP Typical performance - Not guaranteed values



**AC Induction Motor Performance Data**

Record # 73419

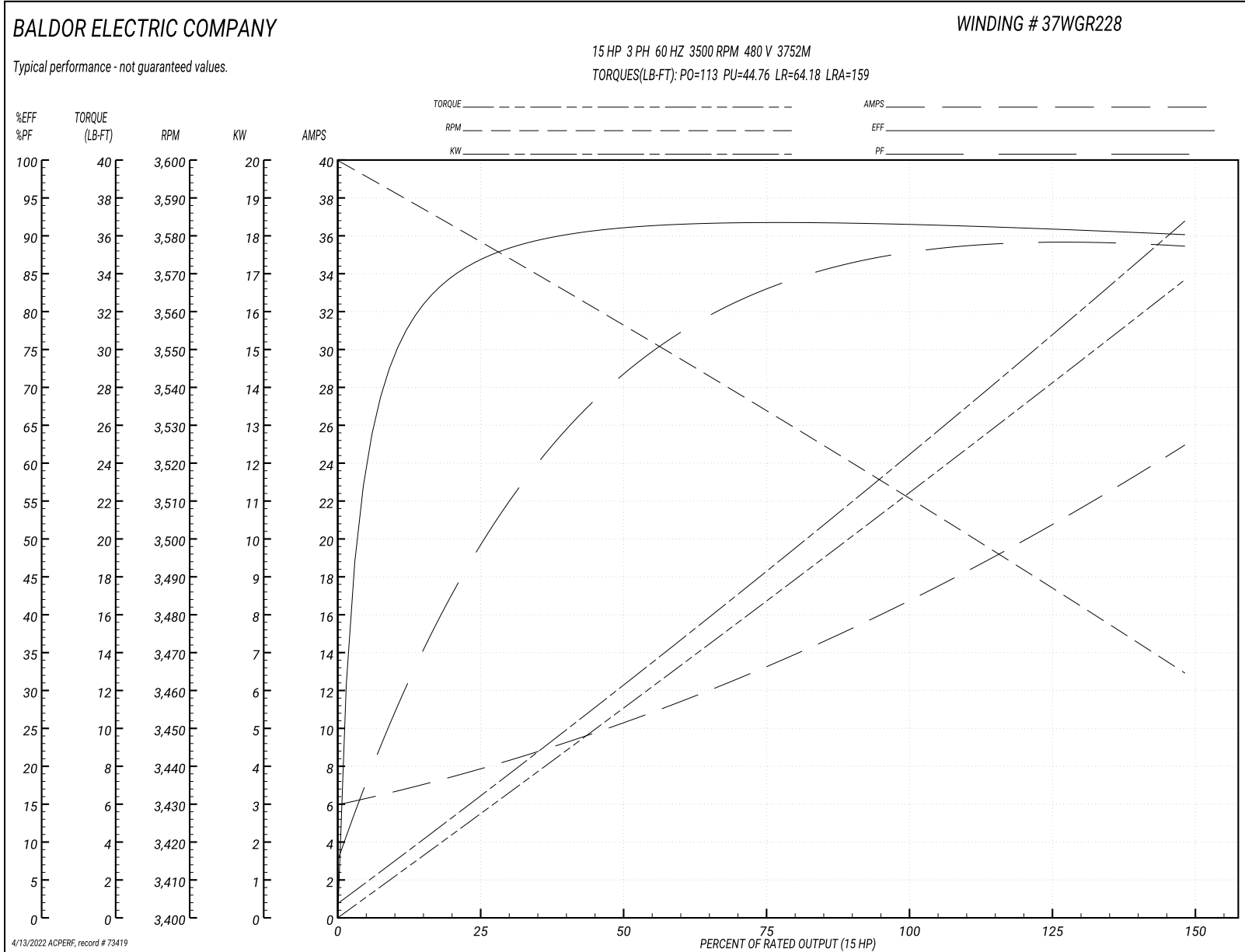
Typical performance - not guaranteed values

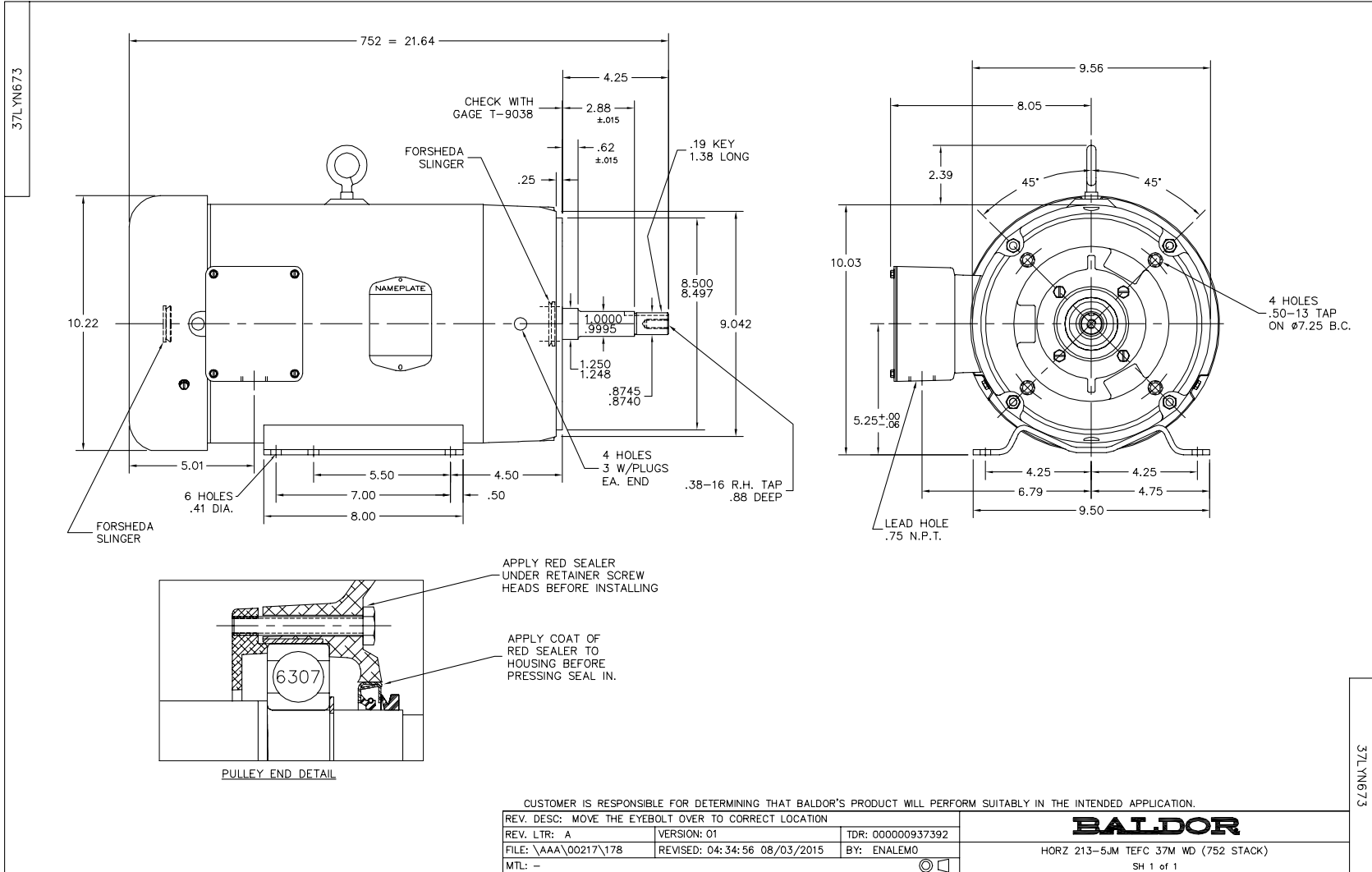
| <b>Winding: 37WGR228-RXXX</b> |                        | <b>Type: 3752M</b>               |  | <b>Enclosure: TEFC</b> |  |
|-------------------------------|------------------------|----------------------------------|--|------------------------|--|
| <b>Nameplate Data</b>         |                        |                                  | <b>480 V, 60 Hz:<br/>High Voltage Connection</b> |                        |  |
| <b>Rated Output (HP)</b>      | 15                     | <b>Full Load Torque</b>          | 22.12 LB-FT                                      |                        |  |
| <b>Volts</b>                  | 230/460                | <b>Start Configuration</b>       | direct on line                                   |                        |  |
| <b>Full Load Amps</b>         | 34/17                  | <b>Breakdown Torque</b>          | 113 LB-FT  |                        |  |
| <b>R.P.M.</b>                 | 3500                   | <b>Pull-up Torque</b>            | 44.76 LB-FT                                      |                        |  |
| <b>Hz</b>                     | 60 <b>Phase</b>        | 3                                | <b>Locked-rotor Torque</b>                       | 64.18 LB-FT            |  |
| <b>NEMA Design Code</b>       | A <b>KVA Code</b>      | J                                | <b>Starting Current</b>                          | 159 A                  |  |
| <b>Service Factor (S.F.)</b>  | 1.15                   | <b>No-load Current</b>           | 6.32 A   |                        |  |
| <b>NEMA Nom. Eff.</b>         | 91 <b>Power Factor</b> | 89                               | <b>Line-line Res. @ 25°C</b>                     | 0.47 Ω                 |  |
| <b>Rating - Duty</b>          | 40C AMB-CONT           | <b>Temp. Rise @ Rated Load</b>   | 67°C   |                        |  |
| <b>S.F. Amps</b>              |                        | <b>Temp. Rise @ S.F. Load</b>    | 83°C   |                        |  |
|                               |                        | <b>Locked-rotor Power Factor</b> | 31.2   |                        |  |
|                               |                        | <b>Rotor inertia</b>             | 0.474 LB-FT <sup>2</sup>                         |                        |  |

**Load Characteristics 480 V, 60 Hz, 15 HP**

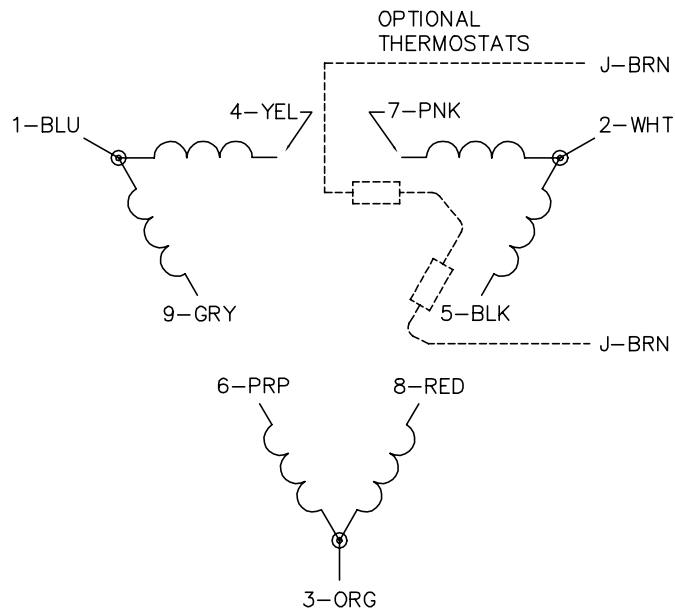
| <b>% of Rated Load</b> | <b>25</b> | <b>50</b> | <b>75</b> | <b>100</b> | <b>125</b> | <b>150</b> | <b>S.F.</b> |
|------------------------|-----------|-----------|-----------|------------|------------|------------|-------------|
| <b>Power Factor</b>    | 50        | 72        | 82        | 86         | 88         | 89         | 87          |
| <b>Efficiency</b>      | 86.2      | 90.7      | 91.8      | 91.5       | 90.9       | 90.1       | 91.1        |
| <b>Speed</b>           | 3580      | 3560      | 3538      | 3506       | 3491       | 3465       | 3497        |
| <b>Line amperes</b>    | 7.28      | 9.85      | 13.18     | 16.77      | 20.58      | 24.75      | 19.1        |

Performance Graph at 480V, 60Hz, 15.0HP Typical performance - Not guaranteed values

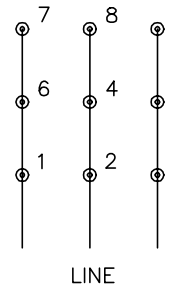




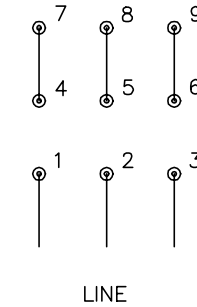
CD0180



LOW VOLTAGE  
(2D)



HIGH VOLTAGE  
(1D)



NOTES:

1. INTERCHANGE ANY TWO LINE LEADS TO REVERSE ROTATION.
2. OPTIONAL THERMOSTATS ARE PROVIDED WHEN SPECIFIED.
3. ACTUAL NUMBER OF INTERNAL PARALLEL CIRCUITS MAY BE A MULTIPLE OF THOSE SHOWN ABOVE.
4. LEAD COLORS ARE OPTIONAL. LEADS MUST ALWAYS BE NUMBERED AS SHOWN.

CD0180

|                                   |                              |                   |
|-----------------------------------|------------------------------|-------------------|
| REV. DESC: ADD CLASS CONN00000007 |                              |                   |
| REV. LTR: D                       | VERSION: 01                  | TDR: 000001099922 |
| FILE: \AAA\00005\148              | REVISED: 10:25:29 02/19/2019 | BY: ENBRIRO       |
| MTL: -                            | © □                          |                   |

**BALDOR - RELIANCE®**

3PH, DV, 9 LEADS, DELTA CONNECTION

SH 1 of 1