

BALDOR® • RELIANCE 

Product Information Packet

JMEWDM3714T

10HP,1770RPM,3PH,60HZ,215JM,3752M,TEFC,F

| Part Detail | | | | | | | |
|-------------|--------|-------------|------------|-------------|--------|---------------|------------|
| Revision: | - | Status: | PRD/A | Change #: | | Proprietary: | No |
| Type: | AC | Elec. Spec: | 37WGL865 | CD Diagram: | CD0005 | Mfg Plant: | |
| Mech. Spec: | 37H883 | Layout: | 37LYH883 | Poles: | 04 | Created Date: | 01-29-2021 |
| Base: | RG | Eff. Date: | 02-12-2021 | Leads: | 9#14 | | |

| Specs | | | |
|---------------------------------|-------------------------|--------------------------------|-----------------------|
| Catalog Number: | JMEWDM3714T | Heater Indicator: | No Heater |
| Enclosure: | TEFC | Insulation Class: | F |
| Frame: | 215JM | Inverter Code: | Inverter Ready |
| Frame Material: | Steel | KVA Code: | K |
| Output @ Frequency: | 10.000 HP @ 60 HZ | Lifting Lugs: | Standard Lifting Lugs |
| Synchronous Speed @ Frequency: | 1800 RPM @ 60 HZ | Locked Bearing Indicator: | Locked Bearing |
| Voltage @ Frequency: | 460.0 V @ 60 HZ | Motor Lead Quantity/Wire Size: | 9 @ 14 AWG |
| | 230.0 V @ 60 HZ | Motor Lead Exit: | Ko Box |
| XP Class and Group: | None | Motor Lead Termination: | Flying Leads |
| XP Division: | Not Applicable | Motor Type: | 3752M |
| Agency Approvals: | UR | Mounting Arrangement: | F1 |
| | CSA EEV | Power Factor: | 85 |
| | CSA | Product Family: | Wash Down |
| Auxillary Box: | No Auxillary Box | Pulley End Bearing Type: | Sealed Bearing |
| Auxillary Box Lead Termination: | None | Pulley Face Code: | C-Face |
| Base Indicator: | Rigid | Pulley Shaft Indicator: | Tapped & Key |
| Bearing Grease Type: | Polyrex EM (-20F +300F) | Rodent Screen: | None |
| Blower: | None | Shaft Extension Location: | Pulley End |

| | | | |
|---------------------------------------|---------------------------|------------------------------------|---------------------|
| Current @ Voltage: | 12.500 A @ 460.0 V | Shaft Ground Indicator: | No Shaft Grounding |
| | 25.000 A @ 230.0 V | Shaft Rotation: | Reversible |
| | 27.000 A @ 208.0 V | Shaft Slinger Indicator: | Shaft Slinger |
| Design Code: | A | Speed Code: | Single Speed |
| Drip Cover: | No Drip Cover | Motor Standards: | NEMA |
| Duty Rating: | CONT | Starting Method: | Direct on line |
| Electrically Isolated Bearing: | Not Electrically Isolated | Thermal Device - Bearing: | None |
| Feedback Device: | NO FEEDBACK | Thermal Device - Winding: | None |
| Front Face Code: | Standard | Vibration Sensor Indicator: | No Vibration Sensor |
| Front Shaft Indicator: | None | Winding Thermal 1: | None |
| | | Winding Thermal 2: | None |

| Nameplate NP1669L | | | | | | | | | | |
|-------------------|------------------------|--|------|----|----------------|------|--|-------|----|---|
| CAT.NO. | JMEWDM3714T | | | | | | | | | |
| SPEC. | 37H883L865G1 | | | | | | | | | |
| HP | 10 | | | | | | | | | |
| VOLTS | 230/460 | | | | | | | | | |
| AMP | 25/12.5 | | | | | | | | | |
| RPM | 1770 | | | | | | | | | |
| FRAME | 215JM | | | | HZ | 60 | | | PH | 3 |
| SER.F. | 1.15 | | CODE | K | DES | A | | CLASS | F | |
| NEMA-NOM-EFF | 91.7 | | PF | 85 | | | | | | |
| RATING | 40C AMB-CONT | | | | | | | | | |
| CC | 010A | | | | USABLE AT 208V | | | 27 | | |
| DE | 6309 | | | | ODE | 6206 | | | | |
| ENCL | TEFC | | SN | | | | | | | |
| BLANK | 20:1CT, 20:1VT, 1.00SF | | | | | | | | | |

| Parts List | | |
|---------------|--|----------|
| Part Number | Description | Quantity |
| SA390619 | SA 37H883L865G1 | 1.000 EA |
| RA381070 | RA 37H883L865G1 | 1.000 EA |
| HW3200A01 | 3/8-16X3/4 I-BLT WELDED F/S | 1.000 EA |
| 37CB3005A04W | CASTING W/.75 NPT@6(MACH WHITE) | 1.000 EA |
| 37GS1025 | 37 MOLDED GASKET W/LIP, LEAD SEAL | 1.000 EA |
| 51XW2520A12 | .25-20 X .75, TAPTITE II, HEX WSHR SLTD | 2.000 EA |
| HA5027A01 | HA4066A01 T-DRAIN X2 BAGGED | 1.000 EA |
| 11XW1032G06 | 10-32 X .38, TAPTITE II, HEX WSHR SLTD U | 1.000 EA |
| 37EP3101A94MW | FRONT TEFC L&M 206 BRG W/O GR SR (WHITE) | 1.000 EA |
| HW4032A01 | BLACK DRAIN PLUG FOR WASH DOWN MOTORS | 3.000 EA |
| HW5100A06 | W2420-025 WVY WSHR (WB) | 1.000 EA |
| 37EP3401T08MW | FACE MT EP, ENCL, 213TC-215TC, W/WHITE E | 1.000 EA |
| HW4032A01 | BLACK DRAIN PLUG FOR WASH DOWN MOTORS | 3.000 EA |
| 10XN2520S36 | 1/4-20X 2 1/4 HEX HD SS | 4.000 EA |
| XY3118S12 | 5/16-18 HEX NUT, STAINLESS STEEL | 4.000 EA |
| 07FH4011 | WASHDOWN IEC FH W/PRIMED | 1.000 EA |
| 11XW1032S06 | SCREW, HXWSHR HD SLDTYF 410 SS | 3.000 EA |
| HW4600B53 | SEAL 1.688 X 2.275 X 0.312 SINGLE LIP DB | 1.000 EA |
| HW4600B74 | V-RING SLINGER 1.125 X 1.445 X .24 VITON | 1.000 EA |
| HW4600B67 | V-RING SLINGER 1.770 X 2.170 X .28 VITON | 1.000 EA |
| 37CB4512 | CONDUIT BOX LID FOR WASHDOWN 37 FRAME | 1.000 EA |
| 37GS1008A02 | 37 GS FOR CB LID - WHITE NEOPRENE | 1.000 EA |
| 59XN0832S07 | 8/32 X 7/16 HX WS HD SER X | 4.000 EA |
| HW2502D13 | SS KEY, 3/16 SQ X 1.375 | 1.000 EA |

| Parts List (continued) | | |
|------------------------|---|----------|
| Part Number | Description | Quantity |
| HA7000A01 | KEY RETAINER 7/8" DIA SHAFT | 1.000 EA |
| MJ5001A27 | 32220KN GRAY SEALER *MIN BUY 4 QTS=1GAL | 0.001 QT |
| 85XU0407S04 | 4X1/4 U DRIVE PIN STAINLESS | 2.000 EA |
| LB1164 | LABEL,WARNING AND DRAIN | 1.000 EA |
| LB1115N | LABEL,LIFTING DEVICE (ON ROLLS) | 1.000 EA |
| MJ1000A02 | GREASE, MOBIL POLYREX EM - 124047 | 0.050 LB |
| 51XB1214A20 | 12-14X1.25 HXWSSLD SERTYB | 1.000 EA |
| 37FN3002C01 | EXFN, PLASTIC, 6.00 OD, 1.155 ID | 1.000 EA |
| MG1025Z02 | ACTIVATOR WILKOFAS 060.02HF | 0.010 GA |
| MG1025W01 | WILKOFAS 781.01, SIGNAL WHITE #9003 | 0.028 GA |
| HA3104S25 | THRUBOLT-5/16-18X14.75 SS | 4.000 EA |
| LC0005 | CONN.DIA.,TY M,9-LD,DUAL VOLT,REVERSING | 1.000 EA |
| NP1669L | SS WD SUPER-E UL CSA-EEV PREM REV MTG | 1.000 EA |
| 37PA1074 | PALLET PACK GRP, PRINT BOX PK1026A06 | 1.000 EA |
| MN416A01 | TAG-INSTAL-MAINT no wire (2100/bx) 4/22 | 1.000 EA |

AC Induction Motor Performance Data

Record # 85459

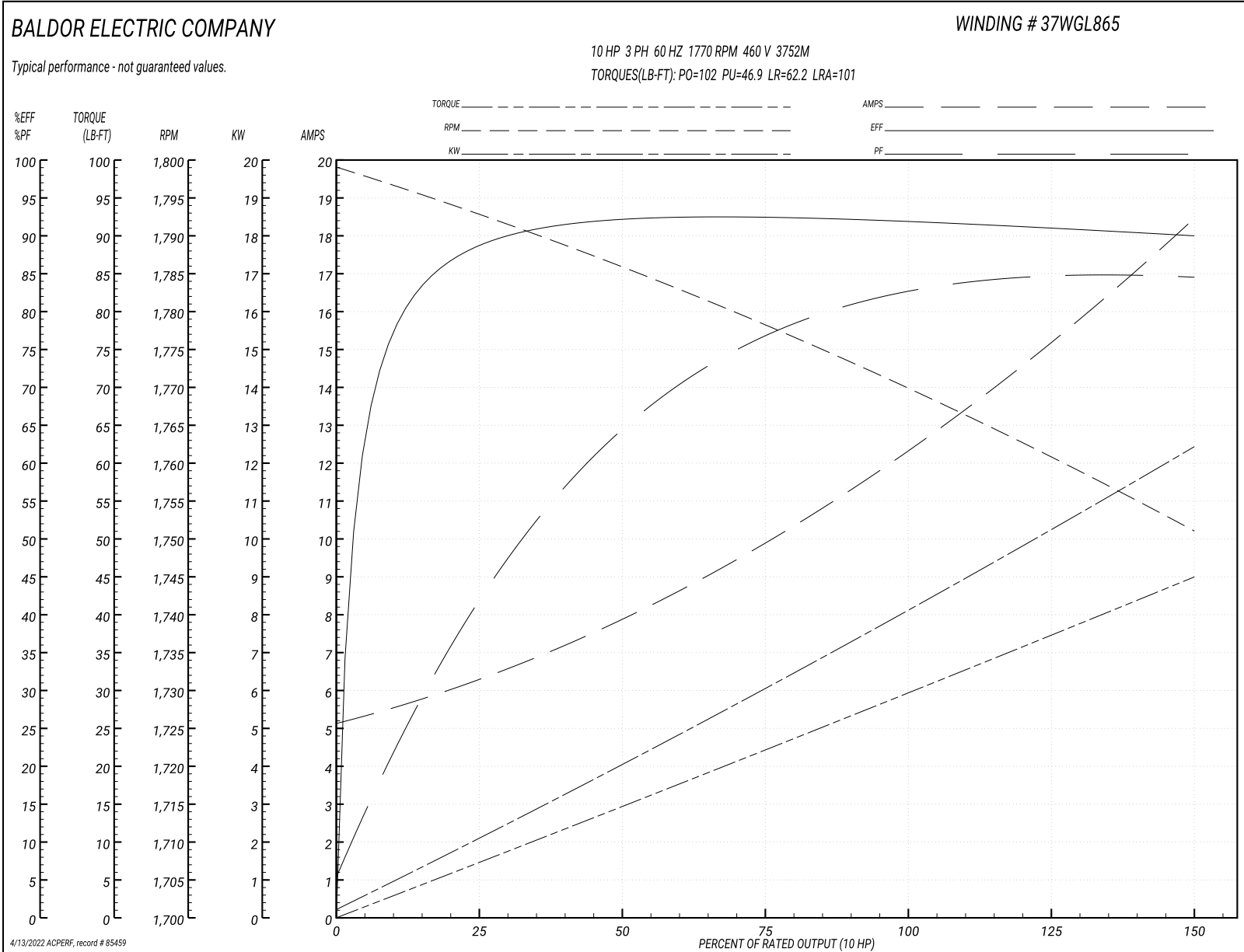
Preliminary Data Sheet

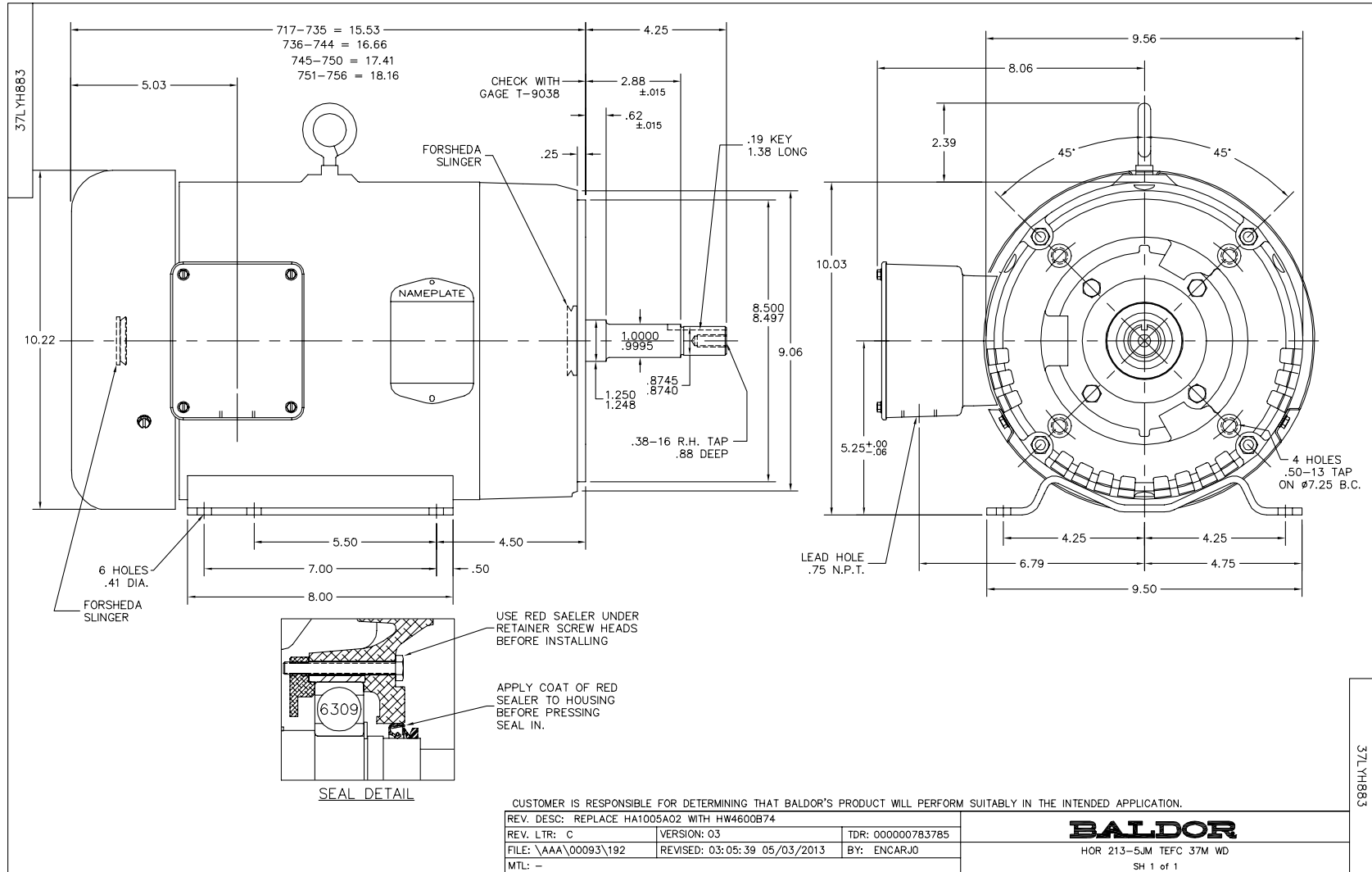
| Winding: 37WGL865-R001 | | Type: 3752M | | Enclosure: TEFC | |
|-------------------------------|-------------------|----------------------------------|--|------------------------|--|
| Nameplate Data | | | 460 V, 60 Hz: High Voltage Connection | | |
| Rated Output (HP) | 10 | Full Load Torque | 29.7 LB-FT | | |
| Volts | 230/460 | Start Configuration | direct on line | | |
| Full Load Amps | 25.0/12.5 | Breakdown Torque | 102 LB-FT | | |
| R.P.M. | 1770 | Pull-up Torque | 46.9 LB-FT | | |
| Hz | 60 Phase | Locked-rotor Torque | 62.2 LB-FT | | |
| NEMA Design Code | A KVA Code | Starting Current | 101 A | | |
| Service Factor (S.F.) | 1.15 | No-load Current | 5.33 A | | |
| NEMA Nom. Eff. | 91.7 Power Factor | Line-line Res. @ 25°C | 0.982 Ω | | |
| Rating - Duty | 40C AMB-CONT | Temp. Rise @ Rated Load | 69°C | | |
| S.F. Amps | 28.2/14.6 | Temp. Rise @ S.F. Load | 92°C | | |
| | | Locked-rotor Power Factor | 42 | | |
| | | Rotor inertia | 1.28 lb-ft ² | | |

Load Characteristics 460 V, 60 Hz, 10 HP

| % of Rated Load | 25 | 50 | 75 | 100 | 125 | 150 | S.F. |
|------------------------|-----------|-----------|-----------|------------|------------|------------|-------------|
| Power Factor | 44 | 66 | 77 | 82 | 84 | 85 | 84 |
| Efficiency | 88.7 | 92.3 | 92.7 | 92.2 | 91.3 | 90 | 91.4 |
| Speed | 1793 | 1786 | 1778 | 1770 | 1761 | 1751 | 1762 |
| Line amperes | 6.05 | 7.73 | 9.9 | 12.5 | 15.3 | 18.3 | 14.1 |

Performance Graph at 460V, 60Hz, 10.0HP Typical performance - Not guaranteed values





CD0005



LOW VOLTAGE
(2Y)



LINE

HIGH VOLTAGE
(1Y)



LINE

NOTES:

1. INTERCHANGE ANY TWO LINE LEADS TO REVERSE ROTATION.
2. OPTIONAL THERMOSTATS ARE PROVIDED WHEN SPECIFIED.
3. ACTUAL NUMBER OF INTERNAL PARALLEL CIRCUITS MAY BE A MULTIPLE OF THOSE SHOWN ABOVE.
4. LEAD COLORS ARE OPTIONAL. LEADS MUST ALWAYS BE NUMBERED AS SHOWN.

| | | | |
|---|---------|-------------------------|--------------|
| REV. DESC: REVISE TO SHOW OPTIONAL COLORS | | | |
| REV. LTR: E | BY: JLP | REVISED: 01/19/99 10:15 | TDR: 0171435 |
| 900000 | | FILE: AAA00005140 | MDL: - |
| | | MTL: - | |

BALDOR ELECTRIC Co.

3PH, DV, 9 LEADS

CD0005