

BALDOR® • RELIANCE 

Product Information Packet

JMEWDM4109T

40HP,3550RPM,3PH,60HZ,324JM,TEFC,F1

| Part Detail | | | | | | | |
|-------------|----|-------------|------------|-------------|--------|---------------|------------|
| Revision: | A | Status: | PRD/A | Change #: | | Proprietary: | No |
| Type: | AC | Elec. Spec: | 12WGY202 | CD Diagram: | CD0180 | Mfg Plant: | |
| Mech. Spec: | | Layout: | 12LYL057 | Poles: | 02 | Created Date: | 01-20-2020 |
| Base: | | Eff. Date: | 12-08-2020 | Leads: | 9#8 | | |

| Specs | | | |
|---------------------------------|-------------------------|---------------------------|-----------------------|
| Catalog Number: | JMEWDM4109T | Feedback Device: | NO FEEDBACK |
| Enclosure: | TEFC | Heater Indicator: | No Heater |
| Frame: | 324JM | Insulation Class: | F |
| Frame Material: | Iron | Inverter Code: | Inverter Ready |
| Output @ Frequency: | 40.000 HP @ 60 HZ | IP Rating: | NONE |
| Synchronous Speed @ Frequency: | 3600 RPM @ 60 HZ | KVA Code: | H |
| Voltage @ Frequency: | 460.0 V @ 60 HZ | Lifting Lugs: | Standard Lifting Lugs |
| | 230.0 V @ 60 HZ | Locked Bearing Indicator: | Locked Bearing |
| XP Class and Group: | None | Motor Lead Termination: | Flying Leads |
| XP Division: | Not Applicable | Motor Type: | 1256M |
| Agency Approvals: | CSA | Mounting Arrangement: | F1 |
| | CSA EEV | Power Factor: | 85 |
| | UR | Product Family: | Washdown Features |
| Auxillary Box: | No Auxillary Box | Pulley Face Code: | C-Face |
| Auxillary Box Lead Termination: | None | Rodent Screen: | None |
| Base Indicator: | Rigid | Shaft Ground Indicator: | No Shaft Grounding |
| Bearing Grease Type: | Polyrex EM (-20F +300F) | Shaft Rotation: | Reversible |
| Blower: | None | Speed Code: | Single Speed |

| | | | |
|---------------------------------------|---------------------------|------------------------------------|---------------------|
| Current @ Voltage: | 47.000 A @ 460.0 V | Motor Standards: | NEMA |
| | 94.000 A @ 230.0 V | Starting Method: | Direct on line |
| Design Code: | B | Thermal Device - Bearing: | None |
| Drip Cover: | No Drip Cover | Thermal Device - Winding: | None |
| Duty Rating: | CONT | Vibration Sensor Indicator: | No Vibration Sensor |
| Electrically Isolated Bearing: | Not Electrically Isolated | Winding Thermal 1: | None |
| | | Winding Thermal 2: | None |

Nameplate NP1669

| | | | | | |
|--------------|--------------------|----------------|------|-------|---|
| CAT.NO. | JMEWDM4109T | | | | |
| SPEC. | 12-0000-1430 | | | | |
| HP | 40 | | | | |
| VOLTS | 230/460 | | | | |
| AMP | 94/47 | | | | |
| RPM | 3550 | | | | |
| FRAME | 324JM | HZ | 60 | PH | 3 |
| SER.F. | 1.15 | CODE | H | DES | B |
| NEMA-NOM-EFF | 92.4 | PF | 85 | CLASS | F |
| RATING | 40C AMB-CONT | | | | |
| CC | 010A | USABLE AT 208V | | | |
| DE | 6312 | ODE | 6311 | | |
| ENCL | TEFC | SN | | | |
| BLANK | 10:1 CT & VT,1.0SF | | | | |

| Parts List | | |
|---------------|--|----------|
| Part Number | Description | Quantity |
| SA378608 | SA 12-0000-1430 | 1.000 EA |
| RA368566 | RA 12-0000-1430 | 1.000 EA |
| LB1115N | LABEL,LIFTING DEVICE (ON ROLLS) | 1.000 EA |
| LB1119N | WARNING LABEL | 1.000 EA |
| LC0181 | CONNECTION LABEL | 1.000 EA |
| NP1669 | SS WD SUPER-E UL CSA CC REV MTG | 1.000 EA |
| 85XU0407S04 | 4X1/4 U DRIVE PIN STAINLESS | 2.000 EA |
| MN416A01 | TAG-INSTAL-MAINT no wire (2100/bx) 4/22 | 1.000 EA |
| 12FH1002WP | FAN COVER, W/WHITE EPOXY, PRIMED CASTING | 1.000 EA |
| HW1001S50 | WASHER, 1/2 SPLT LK, STAINLESS STEEL | 4.000 EA |
| XY5013S12 | 1/2-13 HEX R.H. NUT ST.S | 4.000 EA |
| 37FN3002C04 | EXFN, PLASTIC, 6.00 OD, 2.003 ID | 1.000 EA |
| HW2500A25 | WOODRUFF KEY USA #1008 #BLOW CARBON STEE | 1.000 EA |
| 51XB1214A20 | 12-14X1.25 HXWSSLD SERTYB | 1.000 EA |
| MJ1000A02 | GREASE, MOBIL POLYREX EM - 124047 | 0.200 LB |
| WD4100A02 | DP-1000 HEYCO PLUG OR 62MP1000 MICRO PL | 1.000 EA |
| 12EP1107A12WP | FREP TENV 324-6T NO GREASERS W/WHITE EPO | 1.000 EA |
| HA3400S13 | 303 S.S. STUD, 1/2-13 X 7" WELKER | 4.000 EA |
| HW1001S50 | WASHER, 1/2 SPLT LK, STAINLESS STEEL | 4.000 EA |
| HW4600B41 | V-RING SLINGER 2.125 X 2.880 X 0.280 | 1.000 EA |
| HW5100A13 | W4627-047 WVY WSHER | 1.000 EA |
| HA4054 | SHORT T-DRAIN FITTING, .125" N.P.T. | 1.000 EA |
| 12EP1105A12P | PU ENDPLATE, MACH - NO GREASERS W/EPOXY | 1.000 EA |
| HW1001S50 | WASHER, 1/2 SPLT LK, STAINLESS STEEL | 1.000 EA |

| Parts List (continued) | | |
|------------------------|--|----------|
| Part Number | Description | Quantity |
| 10XN5013S28 | 1/2-13X1 3/4 HEX SS CAP | 4.000 EA |
| HW4600B41 | V-RING SLINGER 2.125 X 2.880 X 0.280 | 1.000 EA |
| HW4600B34 | SINGLE LIP SEAL 2.250 X 2.997 X .438,DBL | 1.000 EA |
| 10XN3118S44 | 5/16-18 X 2 3/4 HEX HEAD SS | 4.000 EA |
| HA4054 | SHORT T-DRAIN FITTING, .125" N.P.T. | 1.000 EA |
| 10CB1000A203P | KOBX W/2.00 NPT & .31 GND MTG, EPOXY PRI | 1.000 EA |
| 09GS1010 | GASKET, DWG, LEADWIRE SEPERATOR | 1.000 EA |
| 10XN3118K16 | 5/16-18 X 1' GRADE #5, STL, ZINC PLATE | 4.000 EA |
| HW1001A31 | LOCKWASHER 5/16, ZINC PLT.591 OD, .319 I | 4.000 EA |
| WD1000B25 | GND LUG, BURNDY L125HP OR T&B L125HP-BB | 1.000 EA |
| 19XW3118G08 | .31-18X.50,HEX WSHR HD,TAPTITE 2,GREEN | 1.000 EA |
| 10CB1500P | CONDUIT BOX LID, MACH W/EPOXY PRIMER | 1.000 EA |
| 14GS1003 | GASKET CONDUIT BOX LID, NEOP | 1.000 EA |
| 10XN2520S16 | 41/4-20 X 1 HEX HEAD SS | 4.000 EA |
| HW1001S25 | WASHER, 1/4 SPLT LK, STAINLESS STEEL | 4.000 EA |
| MG1025W01 | WILKOFAS, 781.01, SIGNAL WHITE #9003 | 0.125 GA |
| MJ5001A27 | 32220KN GRAY SEALER *MIN BUY 4 QTS=1GAL | 0.031 QT |
| MJ5002A01 | SILICON RUBBER SEALANT, 732CL 10.3 OZ TU | 0.033 EA |
| 12PA1000 | PACKAGING GROUP PRINT PK1024A07 | 1.000 EA |
| HW2502E23 | #303 SS,SQ KEY 1/4 X 2.625 | 1.000 EA |

AC Induction Motor Performance Data

Record # 29691

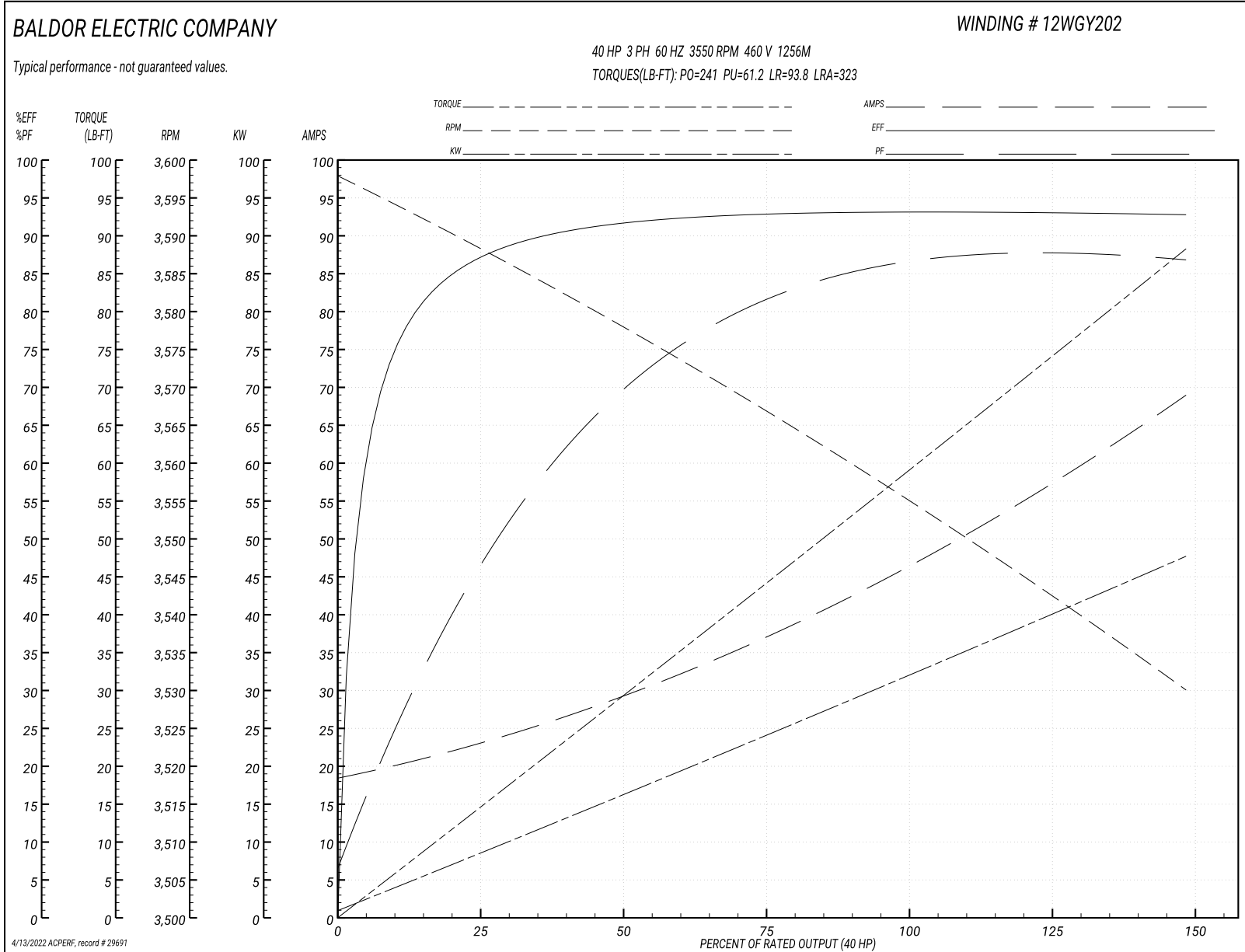
Typical performance - not guaranteed values

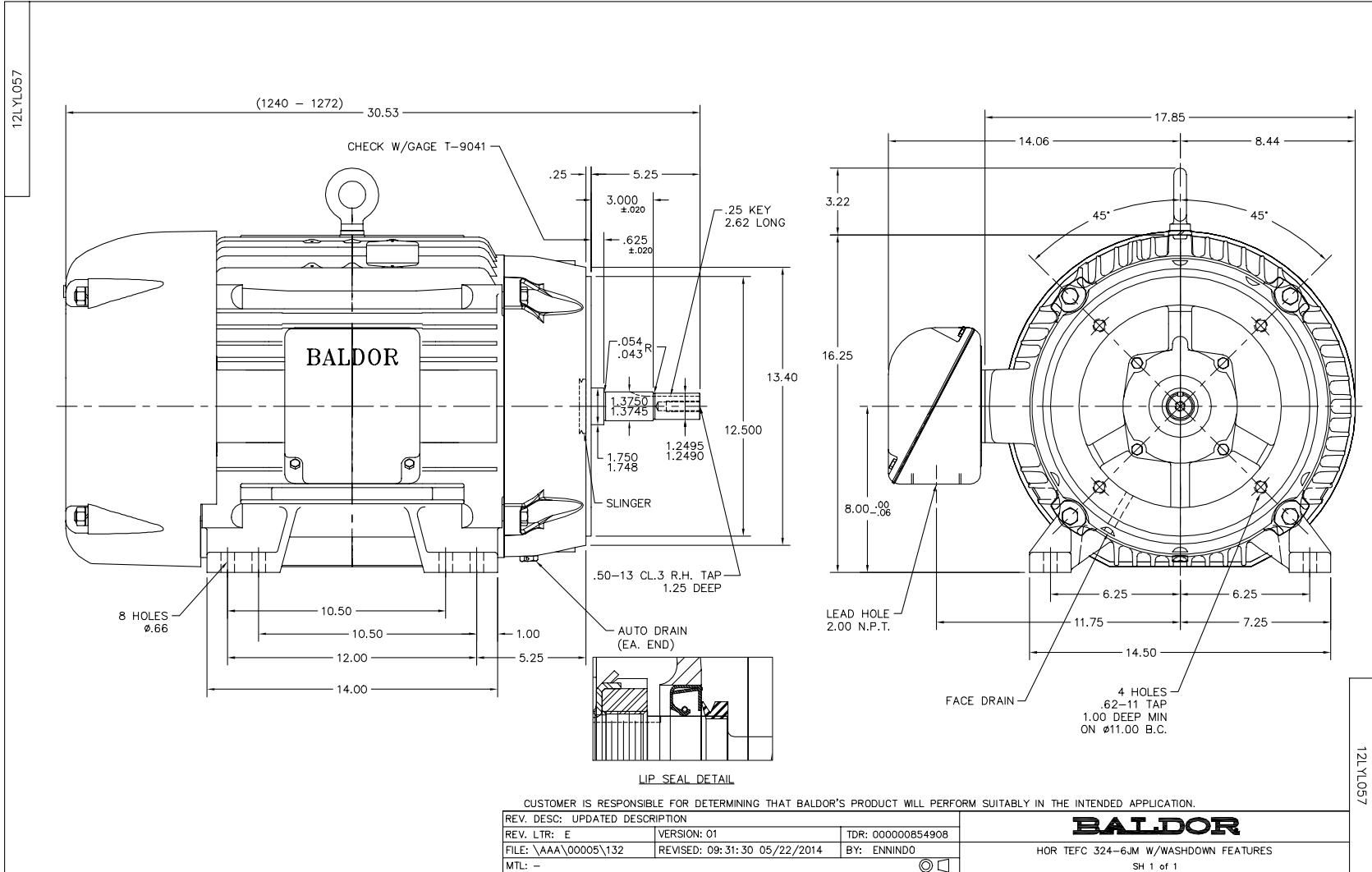
| Winding: 12WGY202-R001 | | Type: 1256M | Enclosure: TEFC |
|------------------------|-----------------|--|-----------------|
| Nameplate Data | | 460 V, 60 Hz: High Voltage Connection | |
| Rated Output (HP) | 40 | Full Load Torque | 58.9 LB-FT |
| Volts | 230/460 | Start Configuration | direct on line |
| Full Load Amps | 94/47 | Breakdown Torque | 241 LB-FT |
| R.P.M. | 3550 | Pull-up Torque | 61.2 LB-FT |
| Hz | 60 Phase | Locked-rotor Torque | 93.8 LB-FT |
| NEMA Design Code | B KVA Code | Starting Current | 323 A |
| Service Factor (S.F.) | 1.15 | No-load Current | 19.3 A |
| NEMA Nom. Eff. | 93 Power Factor | Line-line Res. @ 25°C | 0.126 Ω |
| Rating - Duty | 40C AMB-CONT | Temp. Rise @ Rated Load | 58°C |
| S.F. Amps | | Temp. Rise @ S.F. Load | 70°C |

Load Characteristics 460 V, 60 Hz, 40 HP

| % of Rated Load | 25 | 50 | 75 | 100 | 125 | 150 | S.F. |
|-----------------|------|------|------|------|------|------|------|
| Power Factor | 49 | 71 | 81 | 85 | 87 | 88 | 86 |
| Efficiency | 87.3 | 91.4 | 92.9 | 93.1 | 93.1 | 92.7 | 93.1 |
| Speed | 3588 | 3578 | 3567 | 3555 | 3543 | 3530 | 3548 |
| Line amperes | 22 | 28.7 | 37.4 | 47 | 57.4 | 68.4 | 53.2 |

Performance Graph at 460V, 60Hz, 40.0HP Typical performance - Not guaranteed values





CD0180



LOW VOLTAGE
(2D)



HIGH VOLTAGE
(1D)



NOTES:

1. INTERCHANGE ANY TWO LINE LEADS TO REVERSE ROTATION.
2. OPTIONAL THERMOSTATS ARE PROVIDED WHEN SPECIFIED.
3. ACTUAL NUMBER OF INTERNAL PARALLEL CIRCUITS MAY BE A MULTIPLE OF THOSE SHOWN ABOVE.
4. LEAD COLORS ARE OPTIONAL. LEADS MUST ALWAYS BE NUMBERED AS SHOWN.

CD0180

| | | |
|-----------------------------------|------------------------------|-------------------|
| REV. DESC: ADD CLASS CONN00000007 | | |
| REV. LTR: D | VERSION: 01 | TDR: 000001099922 |
| FILE: \AAA\00005\148 | REVISED: 10:25:29 02/19/2019 | BY: ENBRIRO |
| MTL: - | © □ | |

BALDOR - RELIANCE®

3PH, DV, 9 LEADS, DELTA CONNECTION

SH 1 of 1

Marketing maintained PDF of MN416:

<http://www.baldor.com/support/Literature/Load.ashx/MN416?ManNumber=MN416>