

BALDOR® • RELIANCE 

Product Information Packet

JMEWDM4110T

40HP, 1770RPM, 3PH, 60HZ, 324JM, TEFC, F1

Part Detail							
Revision:	C	Status:	PRD/A	Change #:		Proprietary:	No
Type:	AC	Elec. Spec:	12WGY859	CD Diagram:	CD0180	Mfg Plant:	
Mech. Spec:		Layout:	12LYL057	Poles:	04	Created Date:	01-15-2020
Base:		Eff. Date:	12-08-2020	Leads:	9#8		

Specs			
Catalog Number:	JMEWDM4110T	Feedback Device:	NO FEEDBACK
Enclosure:	TEFC	Heater Indicator:	No Heater
Frame:	324JM	Insulation Class:	F
Frame Material:	Iron	Inverter Code:	Not Inverter
Output @ Frequency:	40.000 HP @ 60 HZ	IP Rating:	NONE
Synchronous Speed @ Frequency:	1800 RPM @ 60 HZ	KVA Code:	F
Voltage @ Frequency:	460.0 V @ 60 HZ	Lifting Lugs:	Standard Lifting Lugs
	230.0 V @ 60 HZ	Locked Bearing Indicator:	Locked Bearing
XP Class and Group:	None	Motor Lead Termination:	Flying Leads
XP Division:	Not Applicable	Motor Type:	1260M
Agency Approvals:	CSA	Mounting Arrangement:	F1
	CSA EEV	Power Factor:	86
	UR	Product Family:	Washdown Features
Auxillary Box:	No Auxillary Box	Pulley Face Code:	C-Face
Auxillary Box Lead Termination:	None	Rodent Screen:	None
Base Indicator:	Rigid	Shaft Ground Indicator:	No Shaft Grounding
Bearing Grease Type:	Polyrex EM (-20F +300F)	Shaft Rotation:	Reversible
Blower:	None	Speed Code:	Single Speed

Current @ Voltage:	92.000 A @ 230.0 V	Motor Standards:	NEMA
	46.000 A @ 460.0 V	Starting Method:	Direct on line
	102.000 A @ 208.0 V	Thermal Device - Bearing:	None
Design Code:	B	Thermal Device - Winding:	None
Drip Cover:	No Drip Cover	Vibration Sensor Indicator:	No Vibration Sensor
Duty Rating:	CONT	Winding Thermal 1:	None
Electrically Isolated Bearing:	Not Electrically Isolated	Winding Thermal 2:	None

Nameplate NP1669				
CAT.NO.	JMEWDM4110T			
SPEC.	12-0000-1426			
HP	40			
VOLTS	230/460			
AMP	92/46			
RPM	1770			
FRAME	324JM	HZ	60	
SER.F.	1.15	CODE	F	
NEMA-NOM-EFF	94.1	PF	86	
RATING	40C AMB-CONT		PH	3
CC	010A	DES	B	
DE	6312	CLASS	F	
ENCL	TEFC	SN		
BLANK	20:1 CT & VT,1.0SF		USABLE AT 208V	102
		ODE	6311	

Parts List		
Part Number	Description	Quantity
SA378111	SA 12-0000-1426	1.000 EA
RA368044	RA 12-0000-1426	1.000 EA
LB1115N	LABEL,LIFTING DEVICE (ON ROLLS)	1.000 EA
LB1119N	WARNING LABEL	1.000 EA
LC0181	CONNECTION LABEL	1.000 EA
NP1669	SS WD SUPER-E UL CSA CC REV MTG	1.000 EA
85XU0407S04	4X1/4 U DRIVE PIN STAINLESS	2.000 EA
MN416A01	TAG-INSTAL-MAINT no wire (2100/bx) 4/22	1.000 EA
12FH1002WP	FAN COVER, W/WHITE EPOXY, PRIMED CASTING	1.000 EA
HW1001S50	WASHER, 1/2 SPLT LK, STAINLESS STEEL	4.000 EA
XY5013S12	1/2-13 HEX R.H. NUT ST.S	4.000 EA
09FN3001B03SP	EXTERNAL FAN, PLASTIC (COMES W/SCREW FRO	1.000 EA
HW2500A25	WOODRUFF KEY USA #1008 #BLOW CARBON STEE	1.000 EA
MJ1000A02	GREASE, MOBIL POLYREX EM - 124047	0.200 LB
WD4100A02	DP-1000 HEYCO PLUG OR 62MP1000 MICRO PL	1.000 EA
12EP1107A12WP	FREP TENV 324-6T NO GREASERS W/WHITE EPO	1.000 EA
HA3400S13	303 S.S. STUD, 1/2-13 X 7" WELKER	4.000 EA
HW1001S50	WASHER, 1/2 SPLT LK, STAINLESS STEEL	4.000 EA
HW4600B41	V-RING SLINGER 2.125 X 2.880 X 0.280	1.000 EA
HW5100A13	W4627-047 WVY WSHER	1.000 EA
HA4066A01	PUSH IN T-DRAIN FITTING (BLACK)	1.000 EA
12EP1105A12P	PU ENDPLATE, MACH - NO GREASERS W/EPOXY	1.000 EA
HW1001S50	WASHER, 1/2 SPLT LK, STAINLESS STEEL	1.000 EA
10XN5013S28	1/2-13X1 3/4 HEX SS CAP	4.000 EA

Parts List (continued)		
Part Number	Description	Quantity
HW4600B41	V-RING SLINGER 2.125 X 2.880 X 0.280	1.000 EA
HW4600B34	SINGLE LIP SEAL 2.250 X 2.997 X .438,DBL	1.000 EA
10XN3118S44	5/16-18 X 2 3/4 HEX HEAD SS	4.000 EA
HA4066A01	PUSH IN T-DRAIN FITTING (BLACK)	1.000 EA
10CB1000A203P	KOBX W/2.00 NPT & .31 GND MTG, EPOXY PRI	1.000 EA
09GS1010	GASKET, DWG, LEADWIRE SEPERATOR	1.000 EA
10XN3118K16	5/16-18 X 1' GRADE #5, STL, ZINC PLATE	4.000 EA
HW1001A31	LOCKWASHER 5/16, ZINC PLT.591 OD, .319 I	4.000 EA
WD1000B25	GND LUG, BURNDY L125HP OR T&B L125HP-BB	1.000 EA
19XW3118G08	.31-18X.50,HEX WSHR HD,TAPTITE 2,GREEN	1.000 EA
10CB1500P	CONDUIT BOX LID, MACH W/EPOXY PRIMER	1.000 EA
14GS1003	GASKET CONDUIT BOX LID, NEOP	1.000 EA
10XN2520S16	41/4-20 X 1 HEX HEAD SS	4.000 EA
HW1001S25	WASHER, 1/4 SPLT LK, STAINLESS STEEL	4.000 EA
MG1025W01	WILKOFASST, 781.01, SIGNAL WHITE #9003	0.125 GA
MJ5001A27	32220KN GRAY SEALER *MIN BUY 4 QTS=1GAL	0.031 QT
MJ5002A01	SILICON RUBBER SEALANT, 732CL 10.3 OZ TU	0.033 EA
12PA1000	PACKAGING GROUP PRINT PK1024A07	1.000 EA
HW2502E23	#303 SS,SQ KEY 1/4 X 2.625	1.000 EA

AC Induction Motor Performance Data

Record # 48093

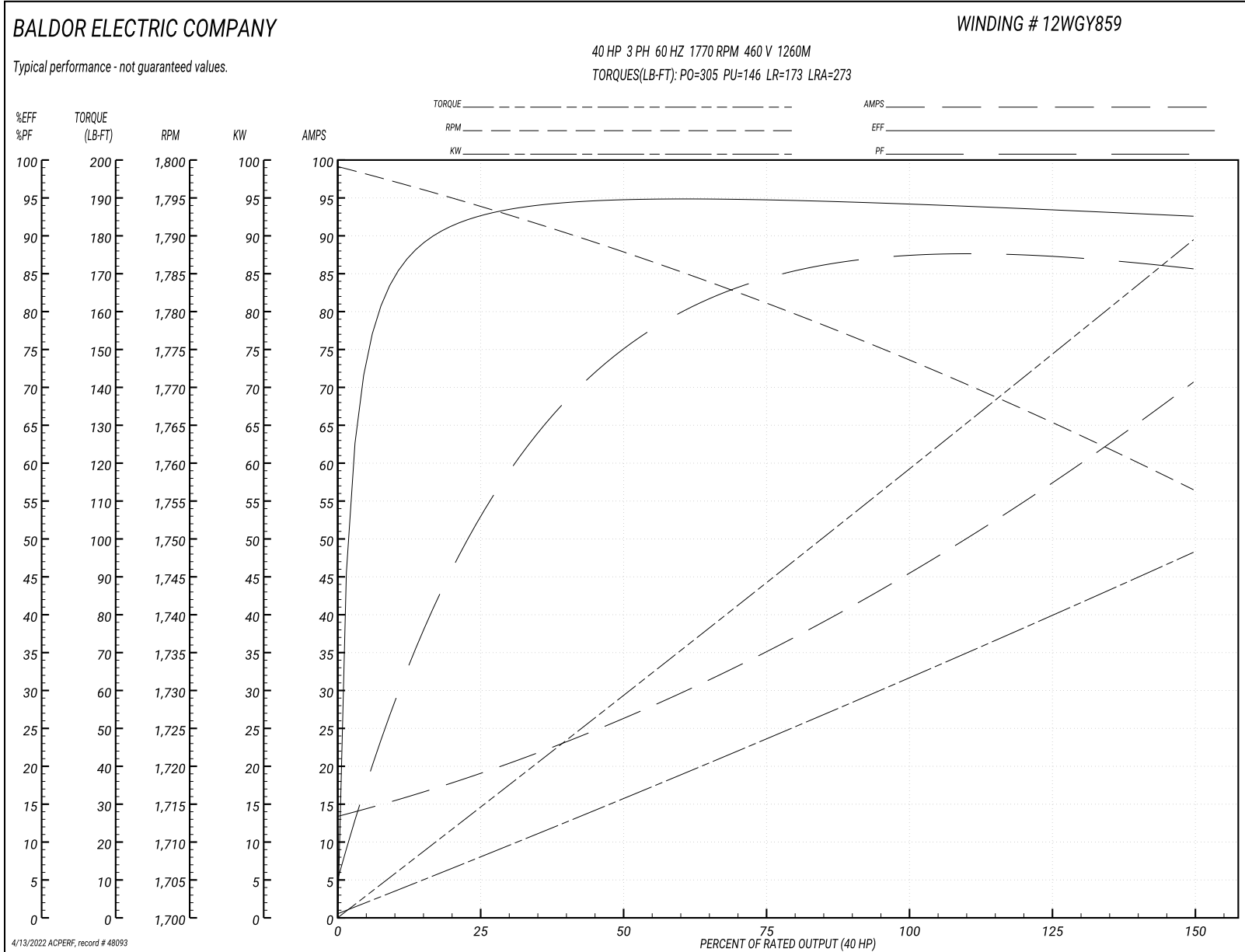
Typical performance - not guaranteed values

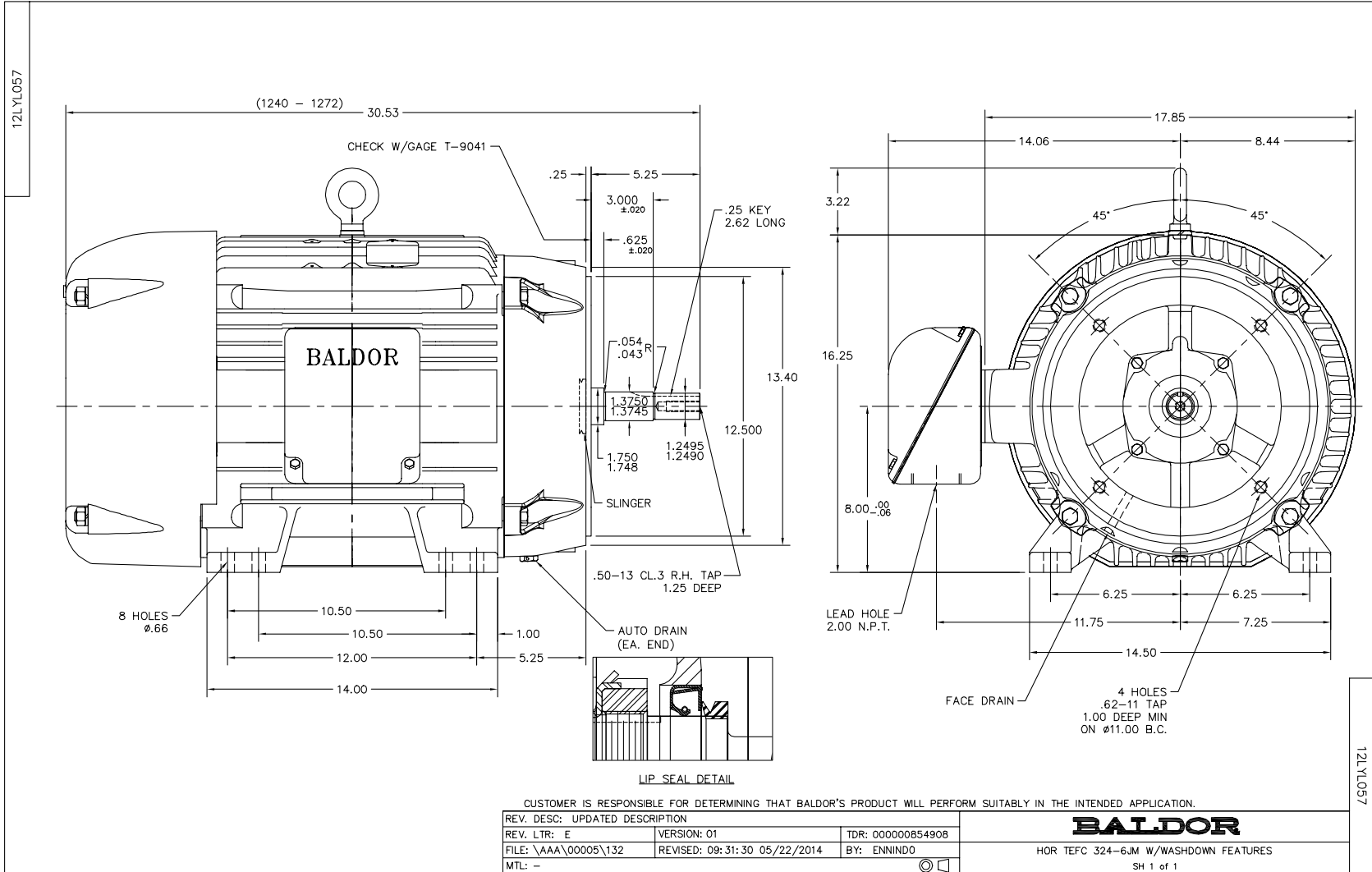
Winding: 12WGY859-R001		Type: 1260M	Enclosure: TEFC
Nameplate Data		460 V, 60 Hz: High Voltage Connection	
Rated Output (HP)	40	Full Load Torque	118 LB-FT
Volts	230/460	Start Configuration	direct on line
Full Load Amps	92/46	Breakdown Torque	305 LB-FT
R.P.M.	1770	Pull-up Torque	146 LB-FT
Hz	60 Phase	Locked-rotor Torque	173 LB-FT
NEMA Design Code	B KVA Code	Starting Current	273 A
Service Factor (S.F.)	1.15	No-load Current	14.3 A
NEMA Nom. Eff.	94.1 Power Factor	Line-line Res. @ 25°C	0.16401 Ω
Rating - Duty	40C AMB-CONT	Temp. Rise @ Rated Load	62°C
S.F. Amps		Temp. Rise @ S.F. Load	78°C
		Locked-rotor Power Factor	27
		Rotor inertia	7.99 LB-FT ²

Load Characteristics 460 V, 60 Hz, 40 HP

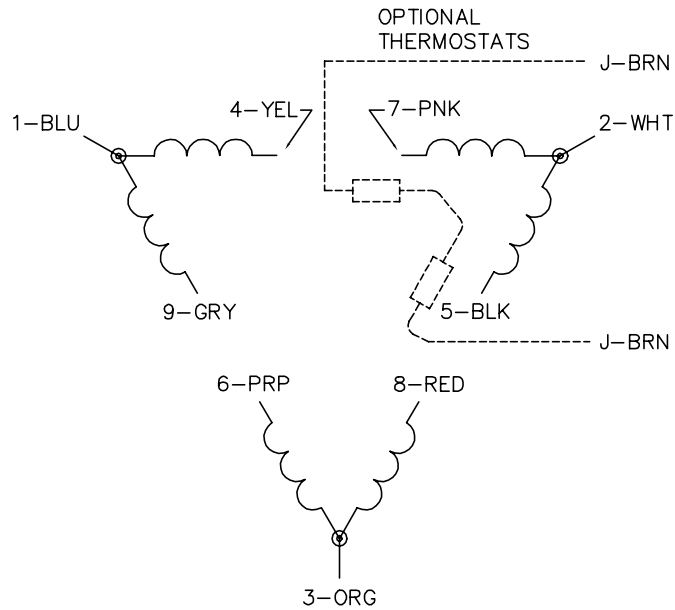
% of Rated Load	25	50	75	100	125	150	S.F.
Power Factor	57	77	84	86	87	86	87
Efficiency	92.6	94.7	94.8	94.3	93.5	92.5	93.8
Speed	1794.1	1788	1780.8	1773.7	1765.2	1756.6	1769
Line amperes	18.1	25.6	35.6	46.1	57.9	70.1	53.2

Performance Graph at 460V, 60Hz, 40.0HP Typical performance - Not guaranteed values

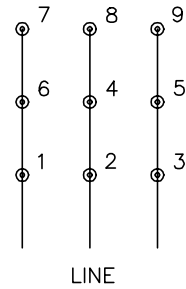




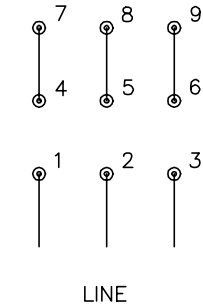
CD0180



LOW VOLTAGE
(2D)



HIGH VOLTAGE
(1D)



NOTES:

1. INTERCHANGE ANY TWO LINE LEADS TO REVERSE ROTATION.
2. OPTIONAL THERMOSTATS ARE PROVIDED WHEN SPECIFIED.
3. ACTUAL NUMBER OF INTERNAL PARALLEL CIRCUITS MAY BE A MULTIPLE OF THOSE SHOWN ABOVE.
4. LEAD COLORS ARE OPTIONAL. LEADS MUST ALWAYS BE NUMBERED AS SHOWN.

CD0180

REV. DESC: ADD CLASS CONN00000007		
REV. LTR: D	VERSION: 01	TDR: 000001099922
FILE: \AAA\00005\148	REVISED: 10:25:29 02/19/2019	BY: ENBRIRO
MTL: -	© □	

BALDOR - RELIANCE®

3PH, DV, 9 LEADS, DELTA CONNECTION

SH 1 of 1

Marketing maintained PDF of MN416:

<http://www.baldor.com/support/Literature/Load.ashx/MN416?ManNumber=MN416>