

BALDOR® • RELIANCE 

Product Information Packet

JMEWDM4115T

50HP, 1770RPM, 3PH, 60HZ, 326JM, TEFC, F1

Part Detail							
Revision:	E	Status:	PRD/A	Change #:		Proprietary:	No
Type:	AC	Elec. Spec:	12WGY627	CD Diagram:	CD0005	Mfg Plant:	
Mech. Spec:		Layout:	12LYL057	Poles:	04	Created Date:	01-13-2020
Base:		Eff. Date:	01-13-2022	Leads:	9#8		

Specs			
Catalog Number:	JMEWDM4115T	Feedback Device:	NO FEEDBACK
Enclosure:	TEFC	Heater Indicator:	No Heater
Frame:	326JM	Insulation Class:	F
Frame Material:	Iron	Inverter Code:	Inverter Duty
Output @ Frequency:	50.000 HP @ 60 HZ	IP Rating:	NONE
Synchronous Speed @ Frequency:	1800 RPM @ 60 HZ	KVA Code:	G
Voltage @ Frequency:	460.0 V @ 60 HZ	Lifting Lugs:	Standard Lifting Lugs
	230.0 V @ 60 HZ	Locked Bearing Indicator:	Locked Bearing
XP Class and Group:	None	Motor Lead Termination:	Flying Leads
XP Division:	Not Applicable	Motor Type:	1272M
Agency Approvals:	CSA	Mounting Arrangement:	F1
	CSA EEV	Power Factor:	87
	UR	Product Family:	Washdown Features
Auxillary Box:	No Auxillary Box	Pulley Face Code:	C-Face
Auxillary Box Lead Termination:	None	Rodent Screen:	None
Base Indicator:	Rigid	Shaft Ground Indicator:	No Shaft Grounding
Bearing Grease Type:	Polyrex EM (-20F +300F)	Shaft Rotation:	Reversible
Blower:	None	Speed Code:	Single Speed

Current @ Voltage:	114.000 A @ 230.0 V	Motor Standards:	NEMA
	57.000 A @ 460.0 V	Starting Method:	Direct on line
Design Code:	B	Thermal Device - Bearing:	None
Drip Cover:	No Drip Cover	Thermal Device - Winding:	None
Duty Rating:	CONT	Vibration Sensor Indicator:	No Vibration Sensor
Electrically Isolated Bearing:	Not Electrically Isolated	Winding Thermal 1:	None
		Winding Thermal 2:	None

Nameplate NP1669				
CAT.NO.	JMEWDM4115T			
SPEC.	12-0000-1418			
HP	50			
VOLTS	230/460			
AMP	114/57			
RPM	1770			
FRAME	326JM	HZ	60	
SER.F.	1.15	CODE	G	
NEMA-NOM-EFF	94.5	PF	87	
RATING	40C AMB-CONT		PH	3
CC	010A	DES	B	
DE	6312	ODE	6311	
ENCL	TEFC	SN		
BLANK	20:1 CT & VT,1.0SF			
			CLASS	F
			USABLE AT 208V	

Parts List		
Part Number	Description	Quantity
SA377889	SA 12-0000-1418	1.000 EA
RA367816	RA 12-0000-1418	1.000 EA
LB1115N	LABEL,LIFTING DEVICE (ON ROLLS)	1.000 EA
LC0005E01	SPL CONN.DIA./WARN.LABEL(LC0005/LB1119)	1.000 EA
NP1669	SS WD SUPER-E UL CSA CC REV MTG	1.000 EA
85XU0407S04	4X1/4 U DRIVE PIN STAINLESS	2.000 EA
MN416A01	TAG-INSTAL-MAINT no wire (2100/bx) 4/22	1.000 EA
12FH1002WP	FAN COVER, W/WHITE EPOXY, PRIMED CASTING	1.000 EA
HW1001S50	WASHER, 1/2 SPLT LK, STAINLESS STEEL	4.000 EA
XY5013S12	1/2-13 HEX R.H. NUT ST.S	4.000 EA
09FN3001B03SP	EXTERNAL FAN, PLASTIC (COMES W/SCREW FRO	1.000 EA
HW2500A25	WOODRUFF KEY USA #1008 #BLOW CARBON STEE	1.000 EA
MJ1000A02	GREASE, MOBIL POLYREX EM - 124047	0.200 LB
WD4100A02	DP-1000 HEYCO PLUG OR 62MP1000 MICRO PL	1.000 EA
12EP1107A12WP	FREP TENV 324-6T NO GREASERS W/WHITE EPO	1.000 EA
HA3400S13	303 S.S. STUD, 1/2-13 X 7" WELKER	4.000 EA
HW1001S50	WASHER, 1/2 SPLT LK, STAINLESS STEEL	4.000 EA
HW4600B41	V-RING SLINGER 2.125 X 2.880 X 0.280	1.000 EA
HW5100A13	W4627-047 WVY WSHER	1.000 EA
HA4066A01	PUSH IN T-DRAIN FITTING (BLACK)	1.000 EA
12EP1105A12P	PU ENDPLATE, MACH - NO GREASERS W/EPOXY	1.000 EA
HW1001S50	WASHER, 1/2 SPLT LK, STAINLESS STEEL	1.000 EA
10XN5013S28	1/2-13X1 3/4 HEX SS CAP	4.000 EA
HW4600B41	V-RING SLINGER 2.125 X 2.880 X 0.280	1.000 EA

Parts List (continued)		
Part Number	Description	Quantity
HW4600B34	SINGLE LIP SEAL 2.250 X 2.997 X .438,DBL	1.000 EA
10XN3118S44	5/16-18 X 2 3/4 HEX HEAD SS	4.000 EA
HA4066A01	PUSH IN T-DRAIN FITTING (BLACK)	1.000 EA
10CB1000A377P	KOBX W/2.00 NPT, .38-16 TAP GND	1.000 EA
09GS1010	GASKET, DWG, LEADWIRE SEPERATOR	1.000 EA
10XN3118K16	5/16-18 X 1' GRADE #5, STL, ZINC PLATE	4.000 EA
HW1001A31	LOCKWASHER 5/16, ZINC PLT.591 OD, .319 I	4.000 EA
WD1000B19	TERMINAL BURNDY L250HP	1.000 EA
10XN3816K08	3/8-16 X .50 HEX HD CAP SCREW GRADE 5	1.000 EA
HW1001A38	LOCKWASHER 3/8, ZINC PLT .688 OD, .382 I	1.000 EA
10CB1500P	CONDUIT BOX LID, MACH W/EPOXY PRIMER	1.000 EA
14GS1003	GASKET CONDUIT BOX LID, NEOP	1.000 EA
10XN2520S16	41/4-20 X 1 HEX HEAD SS	4.000 EA
HW1001S25	WASHER, 1/4 SPLT LK, STAINLESS STEEL	4.000 EA
MG1025W01	WILKOFAS, 781.01, SIGNAL WHITE #9003	0.125 GA
MJ5001A27	32220KN GRAY SEALER *MIN BUY 4 QTS=1GAL	0.031 QT
MJ5002A01	SILICON RUBBER SEALANT, 732CL 10.3 OZ TU	0.033 EA
12PA1000	PACKAGING GROUP PRINT PK1024A07	1.000 EA
HW2502E23	#303 SS,SQ KEY 1/4 X 2.625	1.000 EA

AC Induction Motor Performance Data

Record # 56626

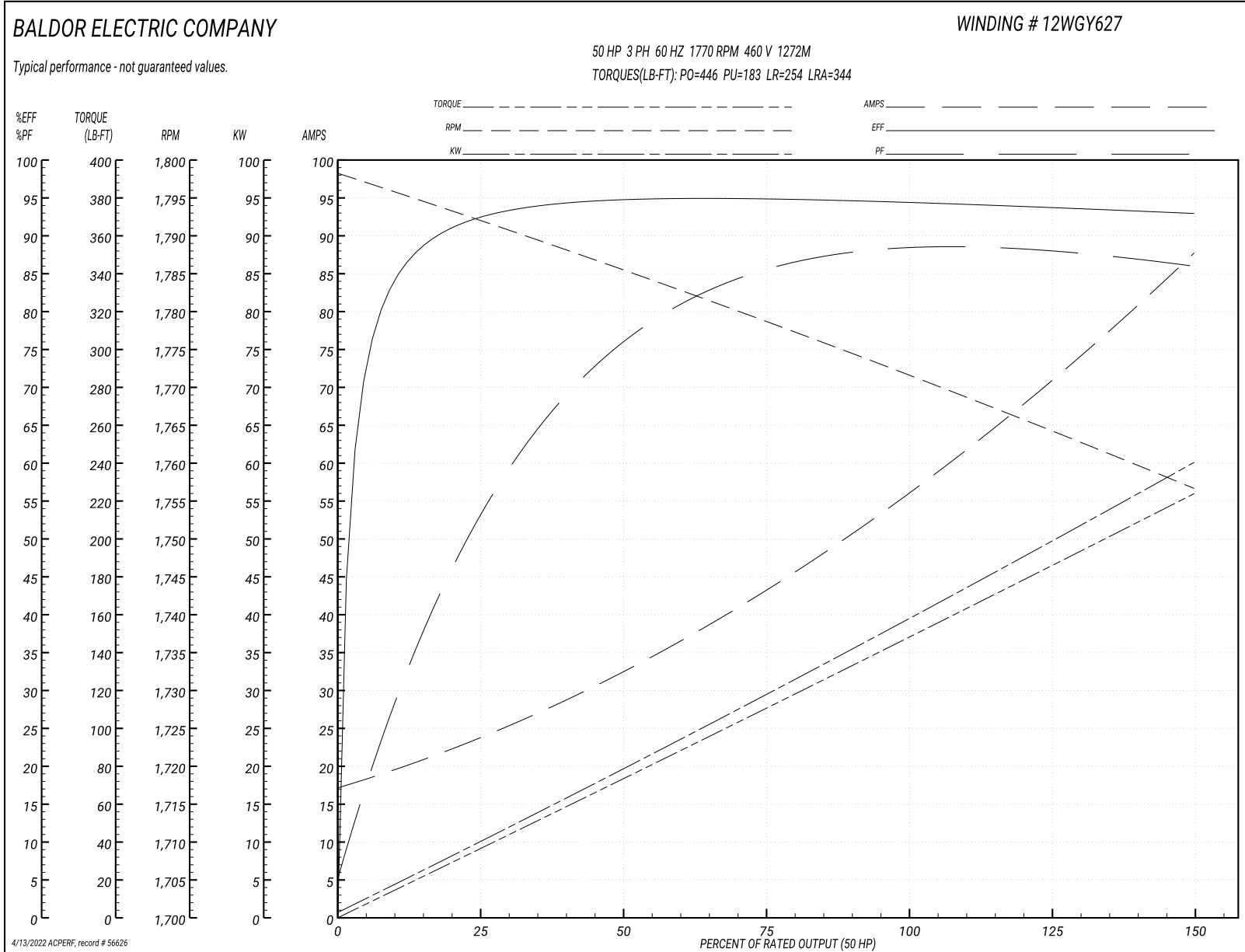
Typical performance - not guaranteed values

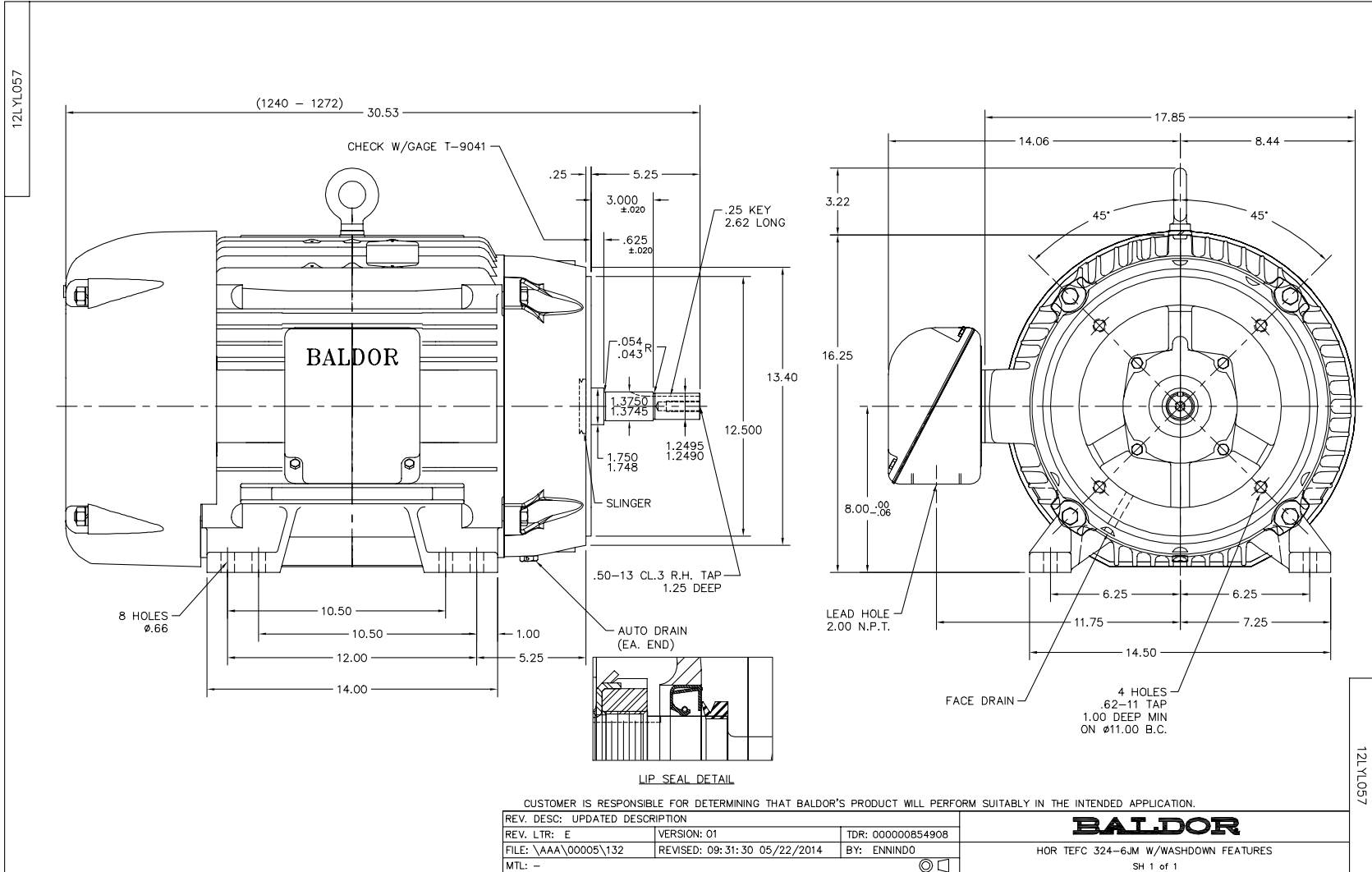
Winding: 12WGY627-R003		Type: 1272M		Enclosure: TEFC	
Nameplate Data			460 V, 60 Hz: High Voltage Connection		
Rated Output (HP)	50	Full Load Torque	148 LB-FT		
Volts	230/460	Start Configuration	direct on line		
Full Load Amps	114/57	Breakdown Torque	446 LB-FT		
R.P.M.	1770	Pull-up Torque	183 LB-FT		
Hz	60 Phase	3	Locked-rotor Torque	254 LB-FT	
NEMA Design Code	B KVA Code	G	Starting Current	344 A	
Service Factor (S.F.)		1	No-load Current	18.3 A	
NEMA Nom. Eff.	94.5 Power Factor	87	Line-line Res. @ 25°C	0.119 Ω	
Rating - Duty	40C AMB-CONT		Temp. Rise @ Rated Load	61°C	
			Locked-rotor Power Factor	24.4	
			Rotor inertia	9.59 lb-ft ²	

Load Characteristics 460 V, 60 Hz, 50 HP

% of Rated Load	25	50	75	100	125	150
Power Factor	58	78	85	87	87	87
Efficiency	92.1	94.7	94.9	94.5	93.9	92.9
Speed	1791	1785	1779	1772	1765	1756
Line amperes	22.3	31.9	43.5	56.9	71.3	87.1

Performance Graph at 460V, 60Hz, 50.0HP Typical performance - Not guaranteed values





CD0005

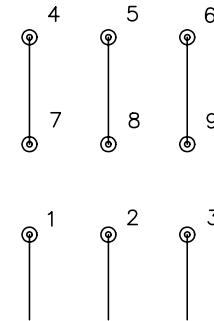


LOW VOLTAGE
(2Y)



LINE

HIGH VOLTAGE
(1Y)



LINE

NOTES:

1. INTERCHANGE ANY TWO LINE LEADS TO REVERSE ROTATION.
2. OPTIONAL THERMOSTATS ARE PROVIDED WHEN SPECIFIED.
3. ACTUAL NUMBER OF INTERNAL PARALLEL CIRCUITS MAY BE A MULTIPLE OF THOSE SHOWN ABOVE.
4. LEAD COLORS ARE OPTIONAL. LEADS MUST ALWAYS BE NUMBERED AS SHOWN.

REV. DESC: REVISE TO SHOW OPTIONAL COLORS			
REV. LTR: E	BY: JLP	REVISED: 01/19/99 10:15	TDR: 0171435
90000		FILE: AAA00005140	MDL: -
		MTL: -	

BALDOR ELECTRIC Co.

3PH, DV, 9 LEADS

CD0005

Marketing maintained PDF of MN416:

<http://www.baldor.com/support/Literature/Load.ashx/MN416?ManNumber=MN416>