

BALDOR® • RELIANCE 

Product Information Packet

JMFSWDM23933T-E

56M 4P TEFC HOR 254JM S/P9-12 SE ENCAP

| Part Detail | | | | | | | |
|-------------|--------|-------------|------------|-------------|--------|---------------|------------|
| Revision: | M | Status: | PRD/A | Change #: | | Proprietary: | No |
| Type: | AC | Elec. Spec: | 39WGX682 | CD Diagram: | CD0005 | Mfg Plant: | |
| Mech. Spec: | 39E754 | Layout: | 39LYE754 | Poles: | 04 | Created Date: | 05-17-2018 |
| Base: | RG | Eff. Date: | 10-14-2020 | Leads: | 9#12 | | |

| Specs | | | |
|---------------------------------|-------------------------|--------------------------------|------------------------|
| Catalog Number: | JMFSWDM23933T-E | Heater Indicator: | No Heater |
| Enclosure: | TEFC | Insulation Class: | H |
| Frame: | 254JM | Inverter Code: | Inverter Ready |
| Frame Material: | Stainless Steel | KVA Code: | G |
| Output @ Frequency: | 15.000 HP @ 60 HZ | Lifting Lugs: | Standard Lifting Lugs |
| Synchronous Speed @ Frequency: | 1800 RPM @ 60 HZ | Locked Bearing Indicator: | Locked Bearing |
| Voltage @ Frequency: | 460.0 V @ 60 HZ | Motor Lead Quantity/Wire Size: | 9 @ 12 AWG |
| | 230.0 V @ 60 HZ | Motor Lead Termination: | Flying Leads |
| XP Class and Group: | None | Motor Type: | 3956M |
| XP Division: | Not Applicable | Mounting Arrangement: | F1 |
| Agency Approvals: | UR | Power Factor: | 86 |
| | CSA | Product Family: | WD All SS Encapsulated |
| Auxillary Box: | No Auxillary Box | Pulley End Bearing Type: | Sealed Bearing |
| Auxillary Box Lead Termination: | None | Pulley Face Code: | C-Face |
| Base Indicator: | Rigid | Pulley Shaft Indicator: | Standard |
| Bearing Grease Type: | Polyrex EM (-20F +300F) | Rodent Screen: | None |
| Blower: | None | Shaft Ground Indicator: | No Shaft Grounding |
| Current @ Voltage: | 17.500 A @ 460.0 V | Shaft Rotation: | Reversible |

| | | | |
|---------------------------------------|---------------------------|------------------------------------|---------------------|
| | 35.000 A @ 230.0 V | Shaft Slinger Indicator: | No Slinger |
| | 38.000 A @ 208.0 V | Speed Code: | Single Speed |
| Design Code: | A | Motor Standards: | NEMA |
| Drip Cover: | No Drip Cover | Starting Method: | Direct on line |
| Duty Rating: | CONT | Thermal Device - Bearing: | None |
| Electrically Isolated Bearing: | Not Electrically Isolated | Thermal Device - Winding: | None |
| Feedback Device: | NO FEEDBACK | Vibration Sensor Indicator: | No Vibration Sensor |
| Front Shaft Indicator: | None | Winding Thermal 1: | None |
| | | Winding Thermal 2: | None |

| | | | | | | | | | | | |
|----------------------------|-----------------|--|-----------|-------------|-----------------------|-------------|---|--|--|--------------|----|
| Nameplate NP1953L01 | | | | | | | | | | | |
| CAT.NO. | JMFSWDM23933T-E | | | | | | | | | | |
| SPEC. | 39E754X682G1 | | | | | | | | | | |
| HP | 15 | | | | | | | | | | |
| VOLTS | 230/460 | | | | | | | | | | |
| AMPS | 35/17.5 | | | | | | | | | | |
| R.P.M. | 1765 | | | | | | | | | | |
| FRAME | 254JM | | | | HZ | 60 | | | | PH | 3 |
| SER.F. | 1.15 | | | CODE | G | DES. | A | | | CLASS | H |
| NEMA NOM. EFF. | 92.4 | | | | P.F. | 86 | | | | | |
| RATING | 40C AMB-CONT | | | | | | | | | | |
| CC | 010A | | | | USABLE AT 208V | | | | | | 38 |
| DE | 6309 | | | | ODE | 6309 | | | | | |
| ENCL | TEFC | | SN | | | | | | | | |
| | 2:1 CT/10:1 VT | | | | | | | | | | |

| Parts List | | |
|---------------|------------------------------------------|----------|
| Part Number | Description | Quantity |
| SA357748 | SA 39E754X682G1 | 1.000 EA |
| RA346762 | RA 39E754X682G1 | 1.000 EA |
| 09FN3001D01SP | EXTERNAL FAN, PLASTIC (COMES W/SCREW FRO | 1.000 EA |
| 39CB1001A01 | 39 MID-SECTION, - 3PC. BOX W/5.75-12 THD | 1.000 EA |
| RM1070A79 | O-RING, -051 VITON/FKM .070CS X 5.489ID | 1.000 EA |
| 10XN2520S10 | 1/4-20X 5/8 HEX HD CAP SS | 4.000 EA |
| WD1000B16 | T&B CX70TN OR L70P TERMINAL LUG | 1.000 EA |
| 10XN2520G08 | 25-20 X.50 - PAINTED GREEN | 1.000 EA |
| 39EP1904A02 | FREP ENCL 309 BRG (STAINLESS) POLISHED | 1.000 EA |
| RM1070A80 | O-RING, VITON/FKM .070CS X 10.800ID | 1.000 EA |
| HW4600F81 | 45 X 68 X 10 LIP SEAL, GRAPHITE INFUSED | 1.000 EA |
| HW4600F80 | 45 X 62 X 4.5 AFS SEAL, GRAPHITE INFUSED | 1.000 EA |
| HW4500S33 | 1/8 NPT STAINLESS #304 SS PLUG | 3.000 EA |
| HA4002A03 | #304 S.S. DRAIN FITTING, .125 NPT (.44 H | 1.000 EA |
| HW5100A11 | W3917-042 WVY WSHR (WB) | 1.000 EA |
| 39EP1905A01 | PUEP ENCL 309 BRG (STAINLESS) POLISHED | 1.000 EA |
| RM1070A80 | O-RING, VITON/FKM .070CS X 10.800ID | 1.000 EA |
| HW4600F81 | 45 X 68 X 10 LIP SEAL, GRAPHITE INFUSED | 1.000 EA |
| HW4600F80 | 45 X 62 X 4.5 AFS SEAL, GRAPHITE INFUSED | 1.000 EA |
| HW4500S33 | 1/8 NPT STAINLESS #304 SS PLUG | 3.000 EA |
| HA4002A03 | #304 S.S. DRAIN FITTING, .125 NPT (.44 H | 1.000 EA |
| RM1070A78 | O-RING, -012 VITON/FKM .070CS X .364ID | 4.000 EA |
| 39FH4004A01 | 304 SS FANCOVER SPUN W/SLOTS & MTG(POLIS | 1.000 EA |
| 10XN2520FS08 | HEX HD CAP SCREW 1/4-20 X 1/2 SS FOOD SA | 3.000 EA |

| Parts List (continued) | | |
|------------------------|------------------------------------------|----------|
| Part Number | Description | Quantity |
| HW1001S25 | WASHER, 1/4 SPLT LK, STAINLESS STEEL | 3.000 EA |
| 39CB1500A01 | 39 LID, 3 PC. BOX STAINLESS (POLISHED) | 1.000 EA |
| RM1070A79 | O-RING, -051 VITON/FKM .070CS X 5.489ID | 1.000 EA |
| HW2502E18 | #303 SS,SQ KEY 1/4 X 2.000 | 1.000 EA |
| MJ5001A27 | 32220KN GRAY SEALER *MIN BUY 4 QTS=1GAL | 0.005 QT |
| MJ5004A93 | FOOD GRADE (H1 RATED) ANTISEIZE THRD COM | 0.005 EA |
| HA5027A07 | 85XU1208S08 FACE DRAIN PINS BAGGED | 1.000 EA |
| MJ1000A02 | GREASE, MOBIL POLYREX EM - 124047 | 0.030 LB |
| HA3105FS13 | THRUBOLT, 3/8-16 X 16.250 SS FOOD SAFE | 4.000 EA |
| HW2502F08 | KEY, 5/16 SQ X .875 303 SS | 1.000 EA |
| 51XB1214S20 | 12-14X1.25 HXWSSLD SERTYB, SS | 1.000 EA |
| WD5603A01 | KIT, CLOSED-END LEAD SPLICE (18-14GA) | 1.000 EA |
| 40PA1000 | PACKAGING GROUP | 1.000 EA |
| MN416A01 | TAG-INSTAL-MAINT no wire (2100/bx) 4/22 | 1.000 EA |
| LD7020D09 | LEAD SET, 12AWG, 9 LEAD, 20" LONG LEADS | 1.000 EA |
| FE-0000013 | ZRTG FE ASSEMBLY | 1.000 EA |
| PE-0000003 | ZRTG PE ASSEMBLY | 1.000 EA |

AC Induction Motor Performance Data

Record # 48151

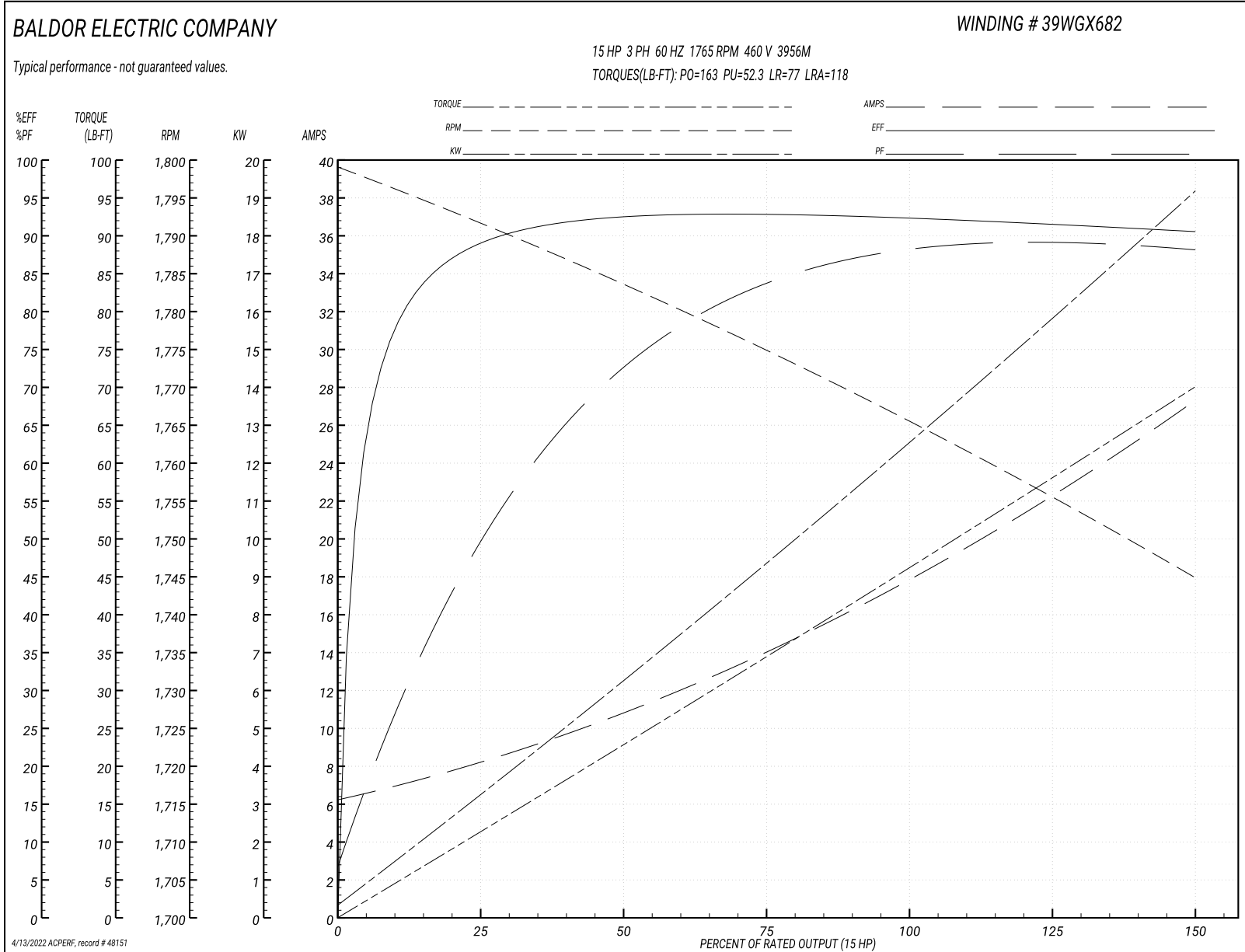
Typical performance - not guaranteed values

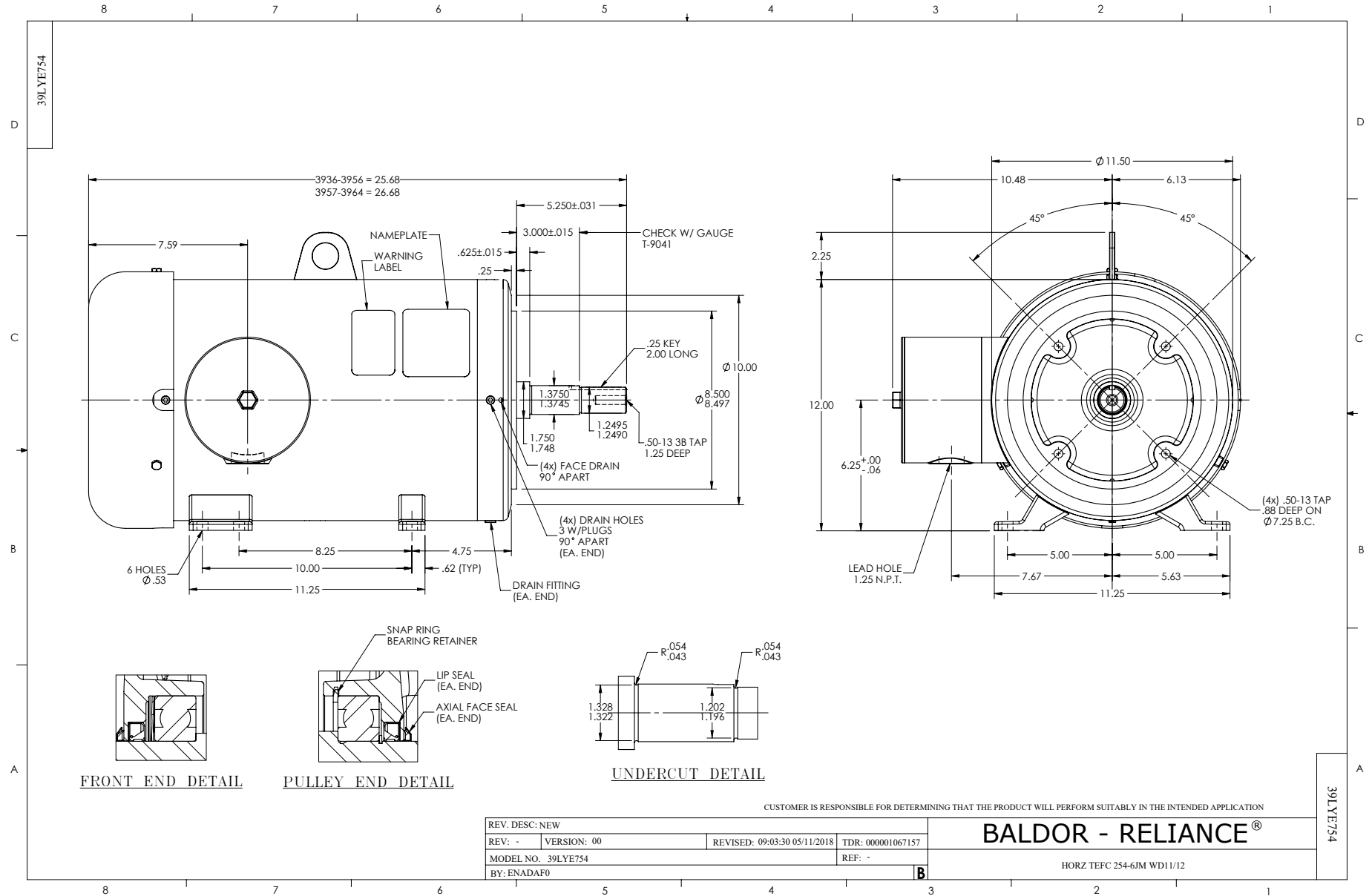
| Winding: 39WGX682-R001 | | Type: 3956M | | Enclosure: TEFC | |
|-------------------------------|--------------------------|----------------------------------|--------------------------------------------------|------------------------|--|
| Nameplate Data | | | 460 V, 60 Hz: High Voltage Connection | | |
| Rated Output (HP) | 15 | Full Load Torque | 44.6 LB-FT | | |
| Volts | 230/460 | Start Configuration | direct on line | | |
| Full Load Amps | 35/17.5 | Breakdown Torque | 163 LB-FT | | |
| R.P.M. | 1765 | Pull-up Torque | 52.3 LB-FT | | |
| Hz | 60 Phase | 3 | Locked-rotor Torque | 77 LB-FT | |
| NEMA Design Code | A KVA Code | G | Starting Current | 118 A | |
| Service Factor (S.F.) | 1.15 | No-load Current | 6.54 A | | |
| NEMA Nom. Eff. | 92.4 Power Factor | 86 | Line-line Res. @ 25°C | 0.528 Ω | |
| Rating - Duty | 40C AMB-CONT | Temp. Rise @ Rated Load | 67°C | | |
| S.F. Amps | | Temp. Rise @ S.F. Load | 81°C | | |
| | | Locked-rotor Power Factor | 32 | | |
| | | Rotor inertia | 2.45 LB-FT ² | | |

Load Characteristics 460 V, 60 Hz, 15 HP

| % of Rated Load | 25 | 50 | 75 | 100 | 125 | 150 | S.F. |
|------------------------|-----------|-----------|-----------|------------|------------|------------|-------------|
| Power Factor | 51 | 73 | 82 | 87 | 88 | 89 | 88 |
| Efficiency | 88.6 | 92.6 | 92.8 | 92.6 | 91.7 | 90.6 | 92.1 |
| Speed | 1792 | 1784 | 1776 | 1767 | 1757 | 1745 | 1761 |
| Line amperes | 7.8 | 10.4 | 13.7 | 17.5 | 21.7 | 27.1 | 20 |

Performance Graph at 460V, 60Hz, 15.0HP Typical performance - Not guaranteed values





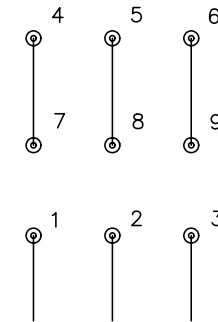
CD0005



LOW VOLTAGE
(2Y)



HIGH VOLTAGE
(1Y)



NOTES:

1. INTERCHANGE ANY TWO LINE LEADS TO REVERSE ROTATION.
2. OPTIONAL THERMOSTATS ARE PROVIDED WHEN SPECIFIED.
3. ACTUAL NUMBER OF INTERNAL PARALLEL CIRCUITS MAY BE A MULTIPLE OF THOSE SHOWN ABOVE.
4. LEAD COLORS ARE OPTIONAL. LEADS MUST ALWAYS BE NUMBERED AS SHOWN.

| | | | |
|-------------------------------------------|---------|-------------------------|--------------|
| REV. DESC: REVISE TO SHOW OPTIONAL COLORS | | | |
| REV. LTR: E | BY: JLP | REVISED: 01/19/99 10:15 | TDR: 0171435 |
| 90000 | | FILE: AAA00005140 | MDL: - |
| | | MTL: - | |

BALDOR ELECTRIC Co.

3PH, DV, 9 LEADS

CD0005

Marketing maintained PDF of MN416:

<http://www.baldor.com/support/Literature/Load.ashx/MN416?ManNumber=MN416>