

BALDOR® • RELIANCE 

Product Information Packet

JMFSWDM23994T-E

15HP,3540RPM,3PH,60HZ,254JM,TEFC,F1

Part Detail							
Revision:	M	Status:	PRD/A	Change #:		Proprietary:	No
Type:	AC	Elec. Spec:	39WGY436	CD Diagram:	CD0005	Mfg Plant:	
Mech. Spec:		Layout:	39LYE754	Poles:	02	Created Date:	12-18-2019
Base:		Eff. Date:	04-12-2022	Leads:	9#12		

Specs			
Catalog Number:	JMFSWDM23994T-E	Insulation Class:	H
Enclosure:	TEFC	Inverter Code:	Inverter Duty
Frame:	254JM	KVA Code:	K
Frame Material:	Stainless Steel	Lifting Lugs:	Standard Lifting Lugs
Output @ Frequency:	15.000 HP @ 60 HZ	Locked Bearing Indicator:	Locked Bearing
Synchronous Speed @ Frequency:	3600 RPM @ 60 HZ	Motor Lead Quantity/Wire Size:	9 @ 12 AWG
Voltage @ Frequency:	460.0 V @ 60 HZ	Motor Lead Termination:	Flying Leads
	230.0 V @ 60 HZ	Motor Type:	3952M
XP Class and Group:	None	Mounting Arrangement:	F1
XP Division:	Not Applicable	Power Factor:	90
Agency Approvals:	CSA	Product Family:	WD All SS Encapsulated
	UR	Pulley End Bearing Type:	Sealed Bearing
Auxillary Box:	No Auxillary Box	Pulley Face Code:	C-Face
Auxillary Box Lead Termination:	None	Pulley Shaft Indicator:	Standard
Base Indicator:	Rigid	Rodent Screen:	None
Bearing Grease Type:	POLYREX SHC102 EM (-20F +356F)	RoHS Status:	ROHS COMPLIANT
Blower:	None	Shaft Ground Indicator:	No Shaft Grounding
Current @ Voltage:	17.000 A @ 460.0 V	Shaft Rotation:	Reversible

	34.000 A @ 230.0 V	Shaft Slinger Indicator:	No Slinger
Design Code:	A	Speed Code:	Single Speed
Drip Cover:	No Drip Cover	Motor Standards:	NEMA
Duty Rating:	CONT	Starting Method:	Direct on line
Electrically Isolated Bearing:	Not Electrically Isolated	Thermal Device - Bearing:	None
Feedback Device:	NO FEEDBACK	Thermal Device - Winding:	None
Front Shaft Indicator:	None	Vibration Sensor Indicator:	No Vibration Sensor
Heater Indicator:	No Heater	Winding Thermal 1:	None
		Winding Thermal 2:	None

Nameplate NP1953L01										
CAT.NO.	JMFSWDM23994T-E									
SPEC.	39-0000-0237									
HP	15									
VOLTS	230/460									
AMPS	34/17									
R.P.M.	3540									
FRAME	254JM				HZ	60			PH	3
SER.F.	1.00		CODE	K	DES.	A		CLASS	H	
NEMA NOM. EFF.	91			P.F.	90					
RATING	40C AMB-CONT									
CC	010A				USABLE AT 208V					
DE	6309			ODE	6309					
ENCL	TEFC		SN							
	2:1 CT/10:1 VT									

Parts List		
Part Number	Description	Quantity
SA377350	SA 39-0000-0237	1.000 EA
RA367267	RA 39-0000-0237	1.000 EA
HW1001S25	WASHER, 1/4 SPLT LK, STAINLESS STEEL	4.000 EA
WD5603A01	KIT, CLOSED-END LEAD SPLICE (18-14GA)	1.000 EA
MN416A01	TAG-INSTAL-MAINT no wire (2100/bx) 4/22	1.000 EA
39FH4004A01	304 SS FANCOVER SPUN W/SLOTS & MTG(POLIS	1.000 EA
10XN2520FS08	HEX HD CAP SCREW 1/4-20 X 1/2 SS FOOD SA	3.000 EA
HW1001S25	WASHER, 1/4 SPLT LK, STAINLESS STEEL	3.000 EA
37FN3002C02	EXFN, PLASTIC, 6.00 OD, 1.503 ID	1.000 EA
HW2502F08	KEY, 5/16 SQ X .875 303 SS	1.000 EA
51XB1214S20	12-14X1.25 HXWSSLD SERTYB, SS	1.000 EA
MJ1000A107	GREASE, MOBIL SHC POLYREX 102 EM	0.080 LB
HA3105FS13	THRUBOLT, 3/8-16 X 16.250 SS FOOD SAFE	4.000 EA
RM1070A78	O-RING, -012 VITON/FKM .070CS X .364ID	4.000 EA
39EP1904A02	FREP ENCL 309 BRG (STAINLESS) POLISHED	1.000 EA
HW4600F81	45 X 68 X 10 LIP SEAL, GRAPHITE INFUSED	1.000 EA
LD7020D09	LEAD SET, 12AWG, 9 LEAD, 20" LONG LEADS	1.000 EA
HW4600F80	45 X 62 X 4.5 AFS SEAL, GRAPHITE INFUSED	1.000 EA
HW5100A11	W3917-042 WVY WSHR (WB)	1.000 EA
HW4500S33	1/8 NPT STAINLESS #304 SS PLUG	3.000 EA
HA4002A03	#304 S.S. DRAIN FITTING, .125 NPT (.44 H	1.000 EA
HA4002A03	#304 S.S. DRAIN FITTING, .125 NPT (.44 H	1.000 EA
RM1070A80	O-RING, VITON/FKM .070CS X 10.800ID	1.000 EA
HA5027A07	85XU1208S08 FACE DRAIN PINS BAGGED	1.000 EA

Parts List (continued)		
Part Number	Description	Quantity
39EP1905A01	PUEP ENCL 309 BRG (STAINLESS) POLISHED	1.000 EA
HW4600F80	45 X 62 X 4.5 AFS SEAL, GRAPHITE INFUSED	1.000 EA
39CB1001A01	39 MID-SECTION, - 3PC. BOX W/5.75-12 THD	1.000 EA
10XN2520S10	1/4-20X 5/8 HEX HD CAP SS	4.000 EA
HW4600F81	45 X 68 X 10 LIP SEAL, GRAPHITE INFUSED	1.000 EA
HW4500S33	1/8 NPT STAINLESS #304 SS PLUG	3.000 EA
RM1070A80	O-RING, VITON/FKM .070CS X 10.800ID	1.000 EA
RM1070A79	O-RING, -051 VITON/FKM .070CS X 5.489ID	1.000 EA
WD1000B16	T&B CX70TN OR L70P TERMINAL LUG	1.000 EA
59XW2520G07	.25-20X.44,HEX SER WSHR,TAPTITE 2,GREEN	1.000 EA
39CB1500A01	39 LID, 3 PC. BOX STAINLESS (POLISHED)	1.000 EA
RM1070A79	O-RING, -051 VITON/FKM .070CS X 5.489ID	1.000 EA
40PA1000	PACKAGING GROUP	1.000 EA
HW2502E18	#303 SS,SQ KEY 1/4 X 2.000	1.000 EA
MJ5004A93	FOOD GRADE (H1 RATED) ANTISEIZE THRD COM	0.005 EA
MJ5000A09	EFI KIT #1578 (400 ML CARTRIDGE OF EFI	0.031 EA
FE-0000013	ZRTG FE ASSEMBLY	1.000 EA
PE-0000003	ZRTG PE ASSEMBLY	1.000 EA

AC Induction Motor Performance Data

Record # 80274

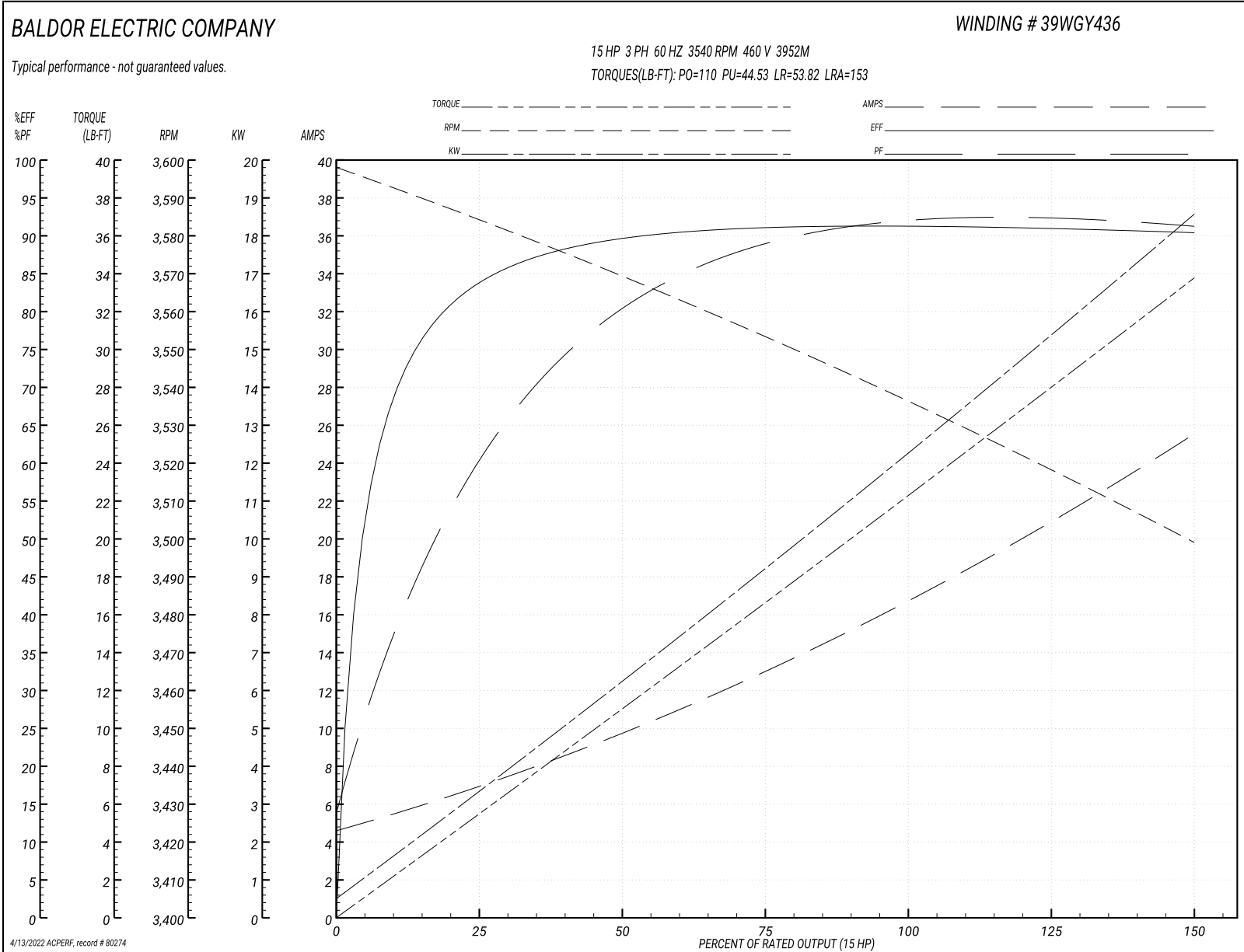
Typical performance - not guaranteed values

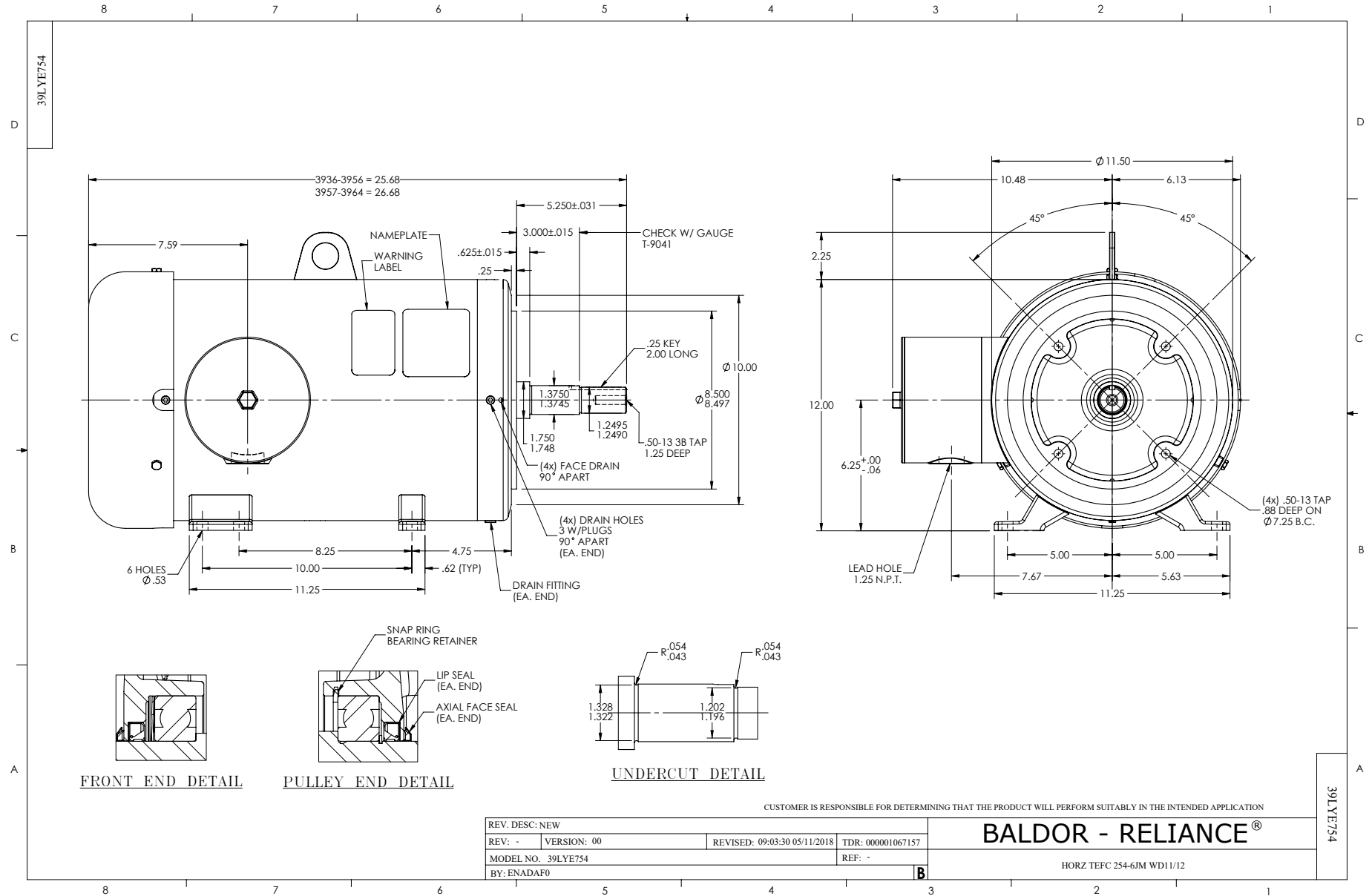
Winding: 39WGY436-R001		Type: 3952M		Enclosure: TEFC	
Nameplate Data			460 V, 60 Hz: High Voltage Connection		
Rated Output (HP)	15	Full Load Torque	22.36 LB-FT		
Volts	230/460	Start Configuration	direct on line		
Full Load Amps	34/17	Breakdown Torque	110 LB-FT		
R.P.M.	3540	Pull-up Torque	44.53 LB-FT		
Hz	60 Phase	3	Locked-rotor Torque	53.82 LB-FT	
NEMA Design Code	A KVA Code	K	Starting Current	153 A	
Service Factor (S.F.)		1	No-load Current	4.89 A	
NEMA Nom. Eff.	91 Power Factor	90	Line-line Res. @ 25°C	0.447 Ω	
Rating - Duty	40C AMB-CONT		Temp. Rise @ Rated Load	68°C	
			Locked-rotor Power Factor	27.2	
			Rotor inertia	1.33 lb-ft ²	

Load Characteristics 460 V, 60 Hz, 15 HP

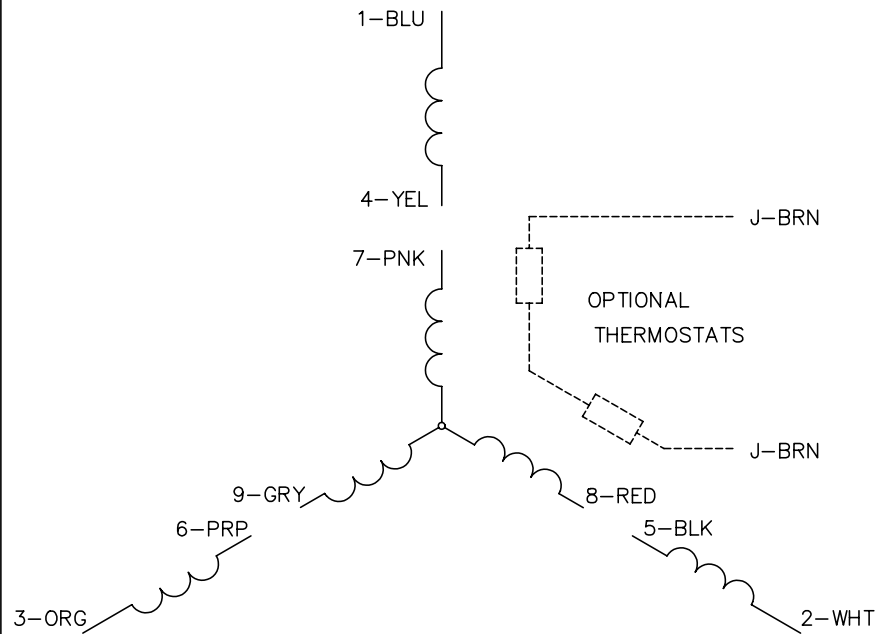
% of Rated Load	25	50	75	100	125	150
Power Factor	65	82	88	91	92	92
Efficiency	83.8	89.5	91.1	91.3	91	90.3
Speed	3584	3569	3553	3536	3518	3499
Line amperes	6.63	9.59	13.23	17	21.13	25.36

Performance Graph at 460V, 60Hz, 15.0HP Typical performance - Not guaranteed values





CD0005

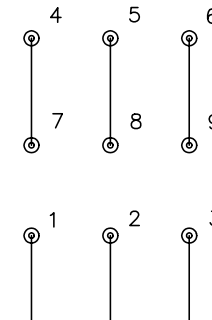


LOW VOLTAGE
(2Y)



LINE

HIGH VOLTAGE
(1Y)



LINE

NOTES:

1. INTERCHANGE ANY TWO LINE LEADS TO REVERSE ROTATION.
2. OPTIONAL THERMOSTATS ARE PROVIDED WHEN SPECIFIED.
3. ACTUAL NUMBER OF INTERNAL PARALLEL CIRCUITS MAY BE A MULTIPLE OF THOSE SHOWN ABOVE.
4. LEAD COLORS ARE OPTIONAL. LEADS MUST ALWAYS BE NUMBERED AS SHOWN.

REV. DESC: REVISE TO SHOW OPTIONAL COLORS			
REV. LTR: E	BY: JLP	REVISED: 01/19/99 10:15	TDR: 0171435
90000		FILE: AAA00005140	MDL: -
		MTL: -	

BALDOR ELECTRIC Co.

3PH, DV, 9 LEADS

CD0005

Marketing maintained PDF of MN416:

<http://www.baldor.com/support/Literature/Load.ashx/MN416?ManNumber=MN416>