

**BALDOR® • RELIANCE** 

**Product Information Packet**

**JMFSWDM3559T-E**

**3HP,3470RPM,3PH,60HZ,145JM,3546M,TEFC,F1**

| Part Detail |         |             |            |             |   |               |            |
|-------------|---------|-------------|------------|-------------|---|---------------|------------|
| Revision:   | H       | Status:     | PRD/A      | Change #:   |   | Proprietary:  | No         |
| Type:       | AC      | Elec. Spec: | 35WGR930   | CD Diagram: | CD0005  | Mfg Plant:    |            |
| Mech. Spec: | 35E4781 | Layout:     | 35LYE4781  | Poles:      | 02  | Created Date: | 11-07-2017 |
| Base:       | RG      | Eff. Date:  | 04-28-2021 | Leads:      | 9#18 15" lead length,0#0 dbl dip & bake,0#0 phase insulaY |               |            |

| Specs                           |                         |                                |                        |
|---------------------------------|-------------------------|--------------------------------|------------------------|
| Catalog Number:                 | JMFSWDM3559T-E          | Inverter Code:                 | Inverter Ready         |
| Enclosure:                      | TEFC                    | KVA Code:                      | P                      |
| Frame:                          | 145JM                   | Lifting Lugs:                  | No Lifting Lugs        |
| Frame Material:                 | Stainless Steel         | Locked Bearing Indicator:      | Locked Bearing         |
| Output @ Frequency:             | 3.000 HP @ 60 HZ        | Motor Finish:                  | UNPAINTED              |
| Synchronous Speed @ Frequency:  | 3600 RPM @ 60 HZ        | Motor Lead Quantity/Wire Size: | @ 0 AWG                |
| Voltage @ Frequency:            | 460.0 V @ 60 HZ         |                                | 9 @ 18 AWG             |
|                                 | 230.0 V @ 60 HZ         | Motor Lead Exit:               | Ko Box                 |
| XP Class and Group:             | None                    | Motor Lead Termination:        | Flying Leads           |
| XP Division:                    | Not Applicable          | Motor Type:                    | 3546M                  |
| Agency Approvals:               | CSA                     | Mounting Arrangement:          | F1                     |
|                                 | UR                      | Power Factor:                  | 91                     |
| Auxillary Box:                  | No Auxillary Box        | Product Family:                | WD All SS Encapsulated |
| Auxillary Box Lead Termination: | None                    | Pulley End Bearing Type:       | Sealed Bearing         |
| Base Indicator:                 | Rigid                   | Pulley Face Code:              | C-Face                 |
| Bearing Grease Type:            | Polyrex EM (-20F +300F) | Pulley Shaft Indicator:        | Tapped & Key           |
| Blower:                         | None                    | Rodent Screen:                 | None                   |
| Current @ Voltage:              | 3.700 A @ 460.0 V       | RoHS Status:                   | ROHS COMPLIANT         |

|                                       |                           |                                    |                     |
|---------------------------------------|---------------------------|------------------------------------|---------------------|
|                                       | 7.400 A @ 230.0 V         | <b>Shaft Extension Location:</b>   | Pulley End          |
|                                       | 7.700 A @ 208.0 V         | <b>Shaft Ground Indicator:</b>     | No Shaft Grounding  |
| <b>Design Code:</b>                   | A                         | <b>Shaft Rotation:</b>             | Reversible          |
| <b>Drip Cover:</b>                    | No Drip Cover             | <b>Shaft Slinger Indicator:</b>    | No Slinger          |
| <b>Duty Rating:</b>                   | CONT                      | <b>Speed Code:</b>                 | Single Speed        |
| <b>Electrically Isolated Bearing:</b> | Not Electrically Isolated | <b>Motor Standards:</b>            | NEMA                |
| <b>Feedback Device:</b>               | NO FEEDBACK               | <b>Starting Method:</b>            | Direct on line      |
| <b>Front Face Code:</b>               | Standard                  | <b>Thermal Device - Bearing:</b>   | None                |
| <b>Front Shaft Indicator:</b>         | None                      | <b>Thermal Device - Winding:</b>   | None                |
| <b>Heater Indicator:</b>              | No Heater                 | <b>Vibration Sensor Indicator:</b> | No Vibration Sensor |
| <b>Insulation Class:</b>              | H                         | <b>Winding Thermal 1:</b>          | None                |
|                                       |                           | <b>Winding Thermal 2:</b>          | None                |

|                            |                |  |             |           |                       |      |  |              |   |           |   |
|----------------------------|----------------|--|-------------|-----------|-----------------------|------|--|--------------|---|-----------|---|
| <b>Nameplate NP1953A01</b> |                |  |             |           |                       |      |  |              |   |           |   |
| <b>CAT.NO.</b>             | JMFSWDM3559T-E |  |             |           |                       |      |  |              |   |           |   |
| <b>SPEC.</b>               | 35E4781R930G1  |  |             |           |                       |      |  |              |   |           |   |
| <b>HP</b>                  | 3              |  |             |           |                       |      |  |              |   |           |   |
| <b>VOLTS</b>               | 230/460        |  |             |           |                       |      |  |              |   |           |   |
| <b>AMP</b>                 | 7.4/3.7        |  |             |           |                       |      |  |              |   |           |   |
| <b>RPM</b>                 | 3470           |  |             |           |                       |      |  |              |   |           |   |
| <b>FRAME</b>               | 145JM          |  |             |           | <b>HZ</b>             | 60   |  |              |   | <b>PH</b> | 3 |
| <b>SER.F.</b>              | 1.15           |  | <b>CODE</b> | P         | <b>DES</b>            | A    |  | <b>CLASS</b> | H |           |   |
| <b>NEMA-NOM-EFF</b>        | 86.5           |  |             | <b>PF</b> | 91                    |      |  |              |   |           |   |
| <b>RATING</b>              | 40C AMB-CONT   |  |             |           |                       |      |  |              |   |           |   |
| <b>CC</b>                  | 010A           |  |             |           | <b>USABLE AT 208V</b> |      |  | 7.7          |   |           |   |
| <b>DE</b>                  | 6206           |  |             |           | <b>ODE</b>            | 6205 |  |              |   |           |   |
| <b>ENCL</b>                | TEFC           |  | <b>SN</b>   |           |                       |      |  |              |   |           |   |
|                            | 4:1CT, 10:1VT  |  |             |           |                       |      |  |              |   |           |   |

| Parts List    |  |          |
|---------------|--|----------|
| Part Number   | Description                              | Quantity |
| SA350770      | SA 35E4781R930G1                         | 1.000 EA |
| RA339434      | RA 35E4781R930G1                         | 1.000 EA |
| 34FN3002A01SP | EXTERNAL FAN, PLASTIC, .637/.639 HUB W/  | 1.000 EA |
| 35CB1012A01   | 35-36 MACH MID SECTION - 3 PC. CONDUIT B | 1.000 EA |
| 10XN1032FS08  | HEX HD CAP SCREW 10-32 X 1/2 SS FOOD SAF | 3.000 EA |
| 11XW1032G08   | 10-32 X .50, TAPTITE II, HEX WSHR SLTD U | 1.000 EA |
| HW3001B02     | BRASS CUP WASHER W/GROUND SYMBOL TAB,    | 1.000 EA |
| 35EP1940A05   | FRONT TEFC 205 BRG (STAINLESS)           | 1.000 EA |
| RM1070A25     | O-RING, VITON/FKM .070CS X 6.190ID       | 1.000 EA |
| HW4600G01     | .984X1.499X.25 VITON SLICK SERIES LIP    | 1.000 EA |
| HW4600E99     | 25 X 42 X 6 AFX SEAL, GRAPHITE INFUSED V | 1.000 EA |
| HW4500S33     | 1/8 NPT STAINLESS #304 SS PLUG           | 3.000 EA |
| HA4054        | SHORT T-DRAIN FITTING, .125" N.P.T.      | 1.000 EA |
| HW5100A05     | WVY WSHR F/205 & 304 BRGS                | 1.000 EA |
| 35EP1936A02   | PU EP ENCL 206 BRG 56C/143-5TC (STAINLES | 1.000 EA |
| RM1070A25     | O-RING, VITON/FKM .070CS X 6.190ID       | 1.000 EA |
| HW4600G02     | 30 X 47 X 8 LIP SEAL, GRAPHITE INFUSED V | 1.000 EA |
| HW4600F25     | 30 X 48 X 4.5 AFX SEAL, GRAPHITE INFUSED | 1.000 EA |
| HW4500S33     | 1/8 NPT STAINLESS #304 SS PLUG           | 3.000 EA |
| HA4054        | SHORT T-DRAIN FITTING, .125" N.P.T.      | 1.000 EA |
| RM1070A26     | O-RING,4.5MM I.D.X1.5MM C.S. (VITON)     | 4.000 EA |
| 35FH4005A39   | IEC FH NO GREASER DEBURR/CLEAN - SS      | 1.000 EA |
| 10XN1032FS06  | HEX HD CAP SCREW 10-32 X 3/8 SS FOOD SAF | 3.000 EA |
| RM1070A81     | O-RING, -043 VITON/FKM .070CS X 3.489ID  | 1.000 EA |

| <b>Parts List (continued)</b> |  |                 |
|-------------------------------|--|-----------------|
| <b>Part Number</b>            | <b>Description</b>                       | <b>Quantity</b> |
| 35CB1511A01                   | 35-36-37 MACH. LID - 3 PC. CONDUIT BOX   | 1.000 EA        |
| RM1070A81                     | O-RING, -043 VITON/FKM .070CS X 3.489ID  | 1.000 EA        |
| HW2502D13                     | SS KEY, 3/16 SQ X 1.375                  | 1.000 EA        |
| HA7000A01                     | KEY RETAINER 7/8" DIA SHAFT              | 1.000 EA        |
| MJ5001A27                     | 32220KN GRAY SEALER *MIN BUY 4 QTS=1GAL  | 0.005 QT        |
| MJ5004A93                     | FOOD GRADE (H1 RATED) ANTISEIZE THRD COM | 0.005 EA        |
| HA1025A21                     | WSHR,FELT .125" THK                      | 1.000 EA        |
| MJ1000A02                     | GREASE, MOBIL POLYREX EM - 124047        | 0.050 LB        |
| 19XB0818S12                   | 8-18X3/4 HXWS TYB HIGH-LOW               | 1.000 EA        |
| WD5603A01                     | KIT, CLOSED-END LEAD SPLICE (18-14GA)    | 1.000 EA        |
| HA3100FS61                    | THRUBOLT, 10-32 X 11.750 SS FOOD SAFE    | 4.000 EA        |
| G0PA1000                      | PKG GRP, PRINT PK1026A06                 | 1.000 EA        |
| MN416A01                      | TAG-INSTAL-MAINT no wire (2100/bx) 4/22  | 1.000 EA        |
| HA5027A07                     | 85XU1208S08 FACE DRAIN PINS BAGGED       | 1.000 EA        |
| FE-0000002                    | ZRTG FE ASSEMBLY                         | 1.000 EA        |
| PE-0000002                    | ZRTG PE ASSEMBLY                         | 1.000 EA        |

**AC Induction Motor Performance Data**

Record # 57380

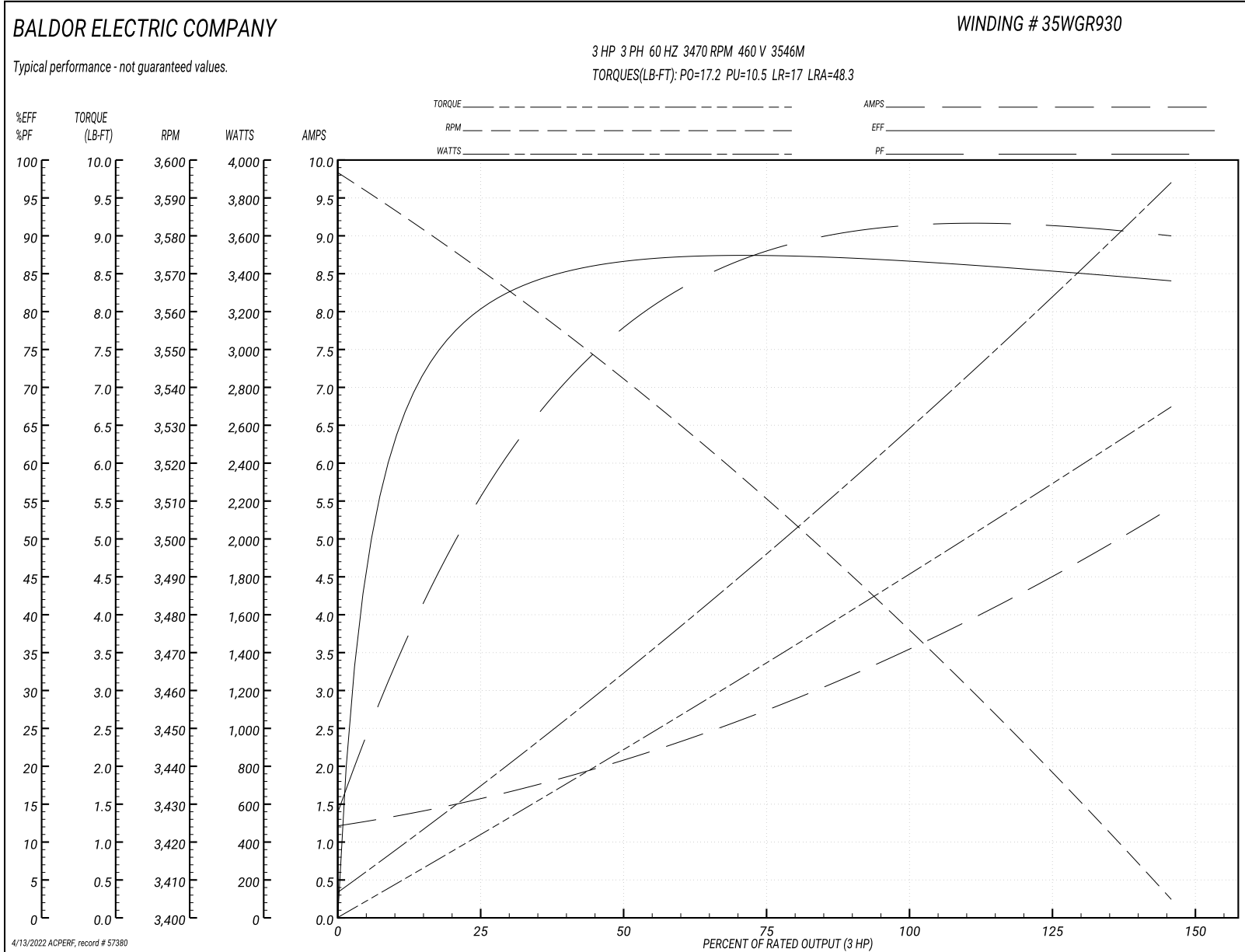
Typical performance - not guaranteed values

| Winding: 35WGR930-R012 |                   | Type: 3546M               | Enclosure: TEFC                                  |  |
|------------------------|-------------------|---------------------------|--|--|
| <b>Nameplate Data</b>  |                   |                           | <b>460 V, 60 Hz:<br/>High Voltage Connection</b> |  |
| Rated Output (HP)      | 3                 | Full Load Torque          | 4.5 LB-FT  |  |
| Volts                  | 230/460           | Start Configuration       | direct on line                                   |  |
| Full Load Amps         | 7.4/3.7           | Breakdown Torque          | 17.2 LB-FT                                       |  |
| R.P.M.                 | 3470              | Pull-up Torque            | 10.5 LB-FT                                       |  |
| Hz                     | 60 Phase          | Locked-rotor Torque       | 17 LB-FT   |  |
| NEMA Design Code       | A KVA Code        | Starting Current          | 48.3 A   |  |
| Service Factor (S.F.)  | 1.15              | No-load Current           | 1.25 A   |  |
| NEMA Nom. Eff.         | 86.5 Power Factor | Line-line Res. @ 25°C     | 3.47 Ω   |  |
| Rating - Duty          | 40C AMB-CONT      | Temp. Rise @ Rated Load   | 63°C   |  |
| S.F. Amps              |                   | Temp. Rise @ S.F. Load    | 74°C   |  |
|                        |                   | Locked-rotor Power Factor | 42.3   |  |
|                        |                   | Rotor inertia             | 0.127 LB-FT <sup>2</sup>                         |  |

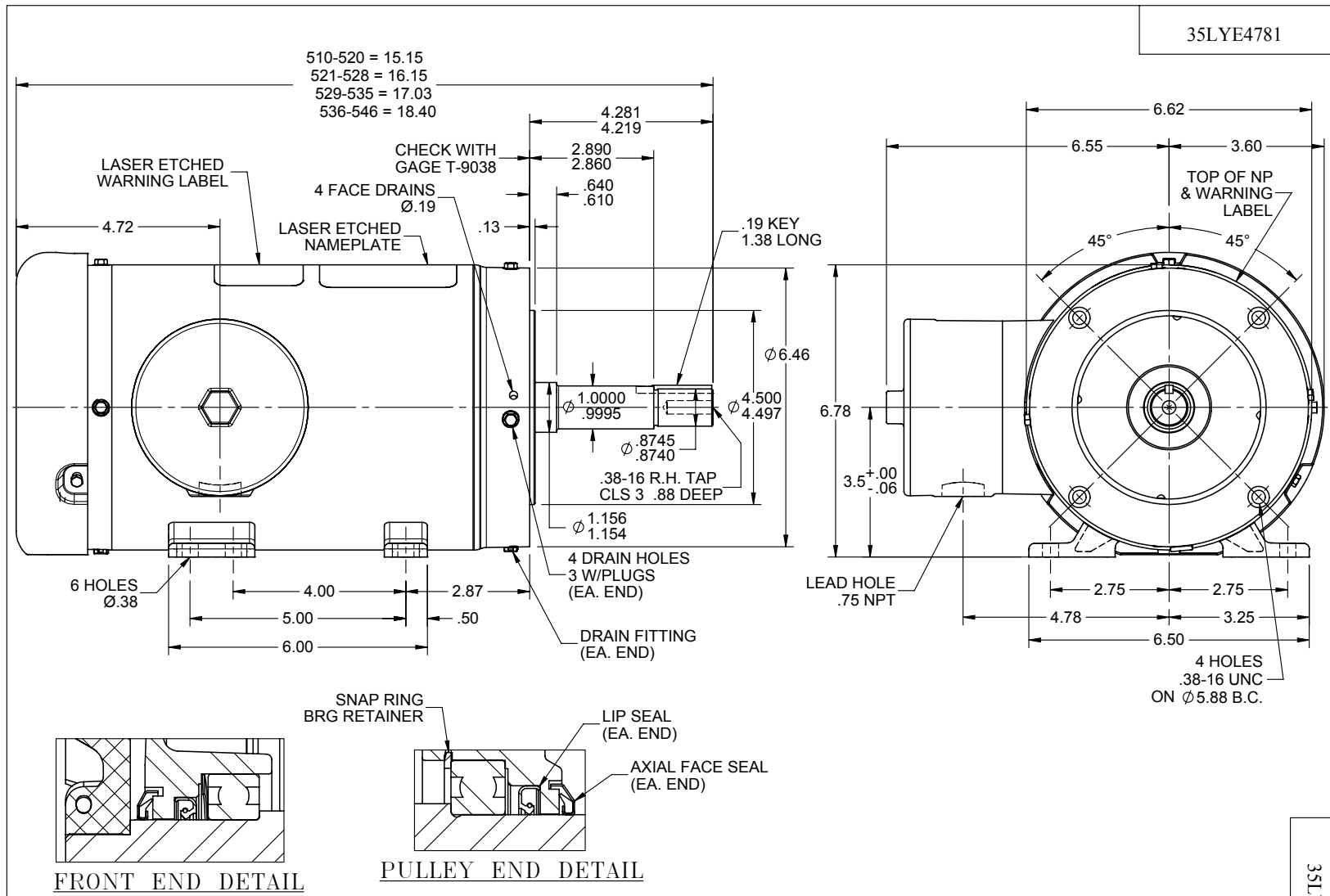
**Load Characteristics 460 V, 60 Hz, 3 HP**

| % of Rated Load | 25   | 50   | 75   | 100  | 125  | 150  | S.F. |
|-----------------|------|------|------|------|------|------|------|
| Power Factor    | 59   | 79   | 87   | 90   | 91   | 90   | 91   |
| Efficiency      | 80.1 | 86.4 | 87.3 | 86.9 | 85.7 | 83.9 | 86.2 |
| Speed           | 3567 | 3541 | 3510 | 3479 | 3443 | 3403 | 3457 |
| Line amperes    | 1.53 | 2.07 | 2.78 | 3.55 | 4.42 | 5.4  | 4.07 |

Performance Graph at 460V, 60Hz, 3.0HP Typical performance - Not guaranteed values







CUSTOMER IS RESPONSIBLE FOR DETERMINING THAT BALDOR'S PRODUCT WILL PERFORM SUITABLY IN THE INTENDED APPLICATION

|                |             |                              |                   |
|----------------|-------------|------------------------------|-------------------|
| REV. DESC: NEW |             |                              |                   |
| REV: -         | VERSION: 00 | REVISED: 01:52:41 01/15/2018 | TDR: 000001030660 |
| 1874781        |             | MODEL NO. 35LYE4781          | REF: -            |
|                |             | BY: ENMARH0                  |                   |

**BALDOR**

STD HORZ 143-5JM TEFC 35M WD11/12

35LYE4781

CD0005

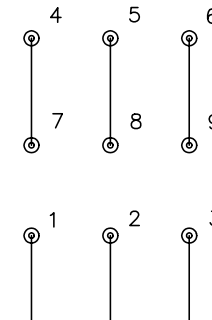


LOW VOLTAGE  
(2Y)



LINE

HIGH VOLTAGE  
(1Y)



LINE

NOTES:

1. INTERCHANGE ANY TWO LINE LEADS TO REVERSE ROTATION.
2. OPTIONAL THERMOSTATS ARE PROVIDED WHEN SPECIFIED.
3. ACTUAL NUMBER OF INTERNAL PARALLEL CIRCUITS MAY BE A MULTIPLE OF THOSE SHOWN ABOVE.
4. LEAD COLORS ARE OPTIONAL. LEADS MUST ALWAYS BE NUMBERED AS SHOWN.

|   |         |                         |              |
|---|---------|-------------------------|--------------|
| REV. DESC: REVISE TO SHOW OPTIONAL COLORS |         |                         |              |
| REV. LTR: E                               | BY: JLP | REVISED: 01/19/99 10:15 | TDR: 0171435 |
| 900000                                    |         | FILE: AAA00005140       | MDL: -       |
|   |         | MTL: -                  |              |

**BALDOR ELECTRIC Co.**

3PH, DV, 9 LEADS

CD0005